



[WWW.WAS.EU](http://WWW.WAS.EU)

# **W150 *and* W150DD**



## **NEW STARS**

Our first new rear combination lamp with dynamic indicator



**LED**

Longlife Lighting  
Technologies

ISO 14001 ISO 9001  
ISO 13207-1



HOMOLOGATION



MADE IN  
POLAND

**- MODERN DESIGN AND EXCELLENT QUALITY -**  
***Proudly made in Poland***



## W150 – General information

**W150DD** is a modern LED rear lamp with the unique shape of a position light and dynamic indicator. The LED position lamp modules are made of a special compound thanks to which the particular lightning points are not visible and it is only possible to see the shape and is pleasant to the eye glow with a neon-like effect. Dynamic indicator brings light moving effect heading towards the direction of turn, when each of 8 led lights up with a delay. The lamp can be used in working voltage 12V and 24V. It is EC, EMC approved and it is also rated for IP 66/68. These are probably the best-looking lamps available on the market.

### Functions description:

- Retroreflecting device – **IA**
- Rear indicator – **DYNAMIC** or static - **2A**
- Rear position light with **NEON** effect – **R**
- Brake light – **S1**
- Rear fog light (optional) – **F**
- Reverse light (optional) – **AR**
- Licence plate light (optional) – **L**

### Technical data:

- Voltage range: 12V- 24V
- Approval: EMC, ECE
- Water resistance: IP 66/68
- Crash resistance lens made from PC
- Body ABS black or PC black
- Weight of lamp 600 g
- Lifetime of the LEDs approximately to 50000 hours of continuous operation
- Easy to install

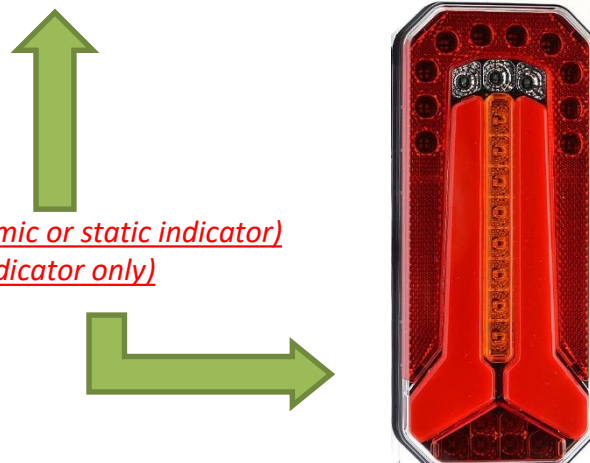
### Connection options:

- 2m long cable YLY-S
- **WAŚ 5-pin** connector (compatible with Aspoeck)
- **WAŚ 7-pin** connector
- *More information on page 6 -*



### Mounting options:

- horizontally (*dynamic or static indicator*)
- vertically (*static indicator only*)



### Power consumption at 12V:

- position light	1,4 W
- stop light	1,4 W
- indicator light	2,2 W
- reversing light	2,2 W
- fog light	1,3 W

### Power consumption at 24V:

- position light	2,9 W
- stop light	2,9 W
- indicator light	4,3 W
- reversing light	4,3 W
- fog light	1,3 W

MADE IN  
POLAND



## W150 – General information

Catalogue No.	1102 L/P	1102 L/P WAS 7	1103 L/P	1103 L/P WAS 5	1103 L/P WAS 7	1104 L/P WAS 5	1104 L/P WAS 7	1104 L/P	1105 L	1105 L WAS 7	1106 L	1106 L WAS 5
Rear position light	•	•	•	•	•	•	•	•	•	•	•	•
Rear indicator	•	•	•	•	•	•	•	•	•	•	•	•
Brake lights	•	•	•	•	•	•	•	•	•	•	•	•
Rear fog light	•	•							•	•		
Reverse light	•	•	•	•					•	•	•	•
Licence plate light	on side	on side	on side	on side	on side	on side	on side	on side	on bottom	on bottom	on bottom	on bottom
Connector		WAS 7-pin		WAS 5-pin	WAS 7-pin	WAS 5-pin	WAS 7-pin			WAS 7-pin		WAS 5-pin

Catalogue No.	1106 L WAS 7	1107 L	1107 L WAS 5	1107 L WAS 7	1108 P	1108 P WAS 7	1109 P	1109 P WAS 5	1109 P WAS 7	1110 P	1110 P WAS 5	1110 P WAS 7
Rear position light	•	•	•	•	•	•	•	•	•	•	•	•
Rear indicator	•	•	•	•	•	•	•	•	•	•	•	•
Brake lights	•	•	•	•	•	•	•	•	•	•	•	•
Rear fog light					•	•						
Reverse light	•				•	•	•	•	•			
Licence plate light	on bottom	on bottom	on bottom	on bottom	on bottom	on bottom	on bottom	on bottom	on bottom	on bottom	on bottom	on bottom
Connector	WAS 7-pin		WAS 5-pin	WAS 7-pin		WAS 7-pin		WAS 5-pin	WAS 7-pin		WAS 5-pin	WAS 7-pin

Specification: DD - dynamic indicator L- left side P - right side

[www.was.eu](http://www.was.eu)



# W150 and W150DD – General information

Catalogue No.	1111 L/P	1111 L/P WAS 7	1112 L/P	1112 L/P WAS 5	1112 L/P WAS 7	1113 L/P	1113 L/P WAS 5	1113 L/P WAS 7	1114 DD L/P	1114 DD L/P	1115 DD L/P	1115 DD L/P WAS 5
Rear position light	•	•	•	•	•	•	•	•	•	•	•	•
Rear indicator	•	•	•	•	•	•	•	•	•	•	•	•
Brake lights	•	•	•	•	•	•	•	•	•	•	•	•
Rear fog light	•	•							•	•		
Reverse light	•	•	•	•	•				•	•	•	•
Licence plate light									on side	on side	on side	on side
Connector		WAS 7-pin		WAS 5-pin	WAS 7-pin		WAS 5-pin	WAS 7-pin		WAS 7-pin		WAS 5-pin

Catalogue No.	1115 DD L/P WAS 7	1116 DD L/P	1116 DD L/P WAS 5	1116 DD L/P WAS 7	1117 DD L	1117 DD L WAS 7	1118 DD L	1118 DD L WAS 5	1118 DD L WAS 7	1119 DD L	1119 DD L WAS 7	1119 DD L WAS 5
Rear position light	•	•	•	•	•	•	•	•	•	•	•	•
Rear indicator	•	•	•	•	•	•	•	•	•	•	•	•
Brake lights	•	•	•	•	•	•	•	•	•	•	•	•
Rear fog light					•	•						
Reverse light	•				•	•	•	•	•			
Licence plate light	on side	on side	on side	on side	on bottom	on bottom	on bottom	on bottom	on bottom	on bottom	on bottom	on bottom
Connector	WAS 7-pin		WAS 5-pin	WAS 7-pin		WAS 7-pin		WAS 5-pin	WAS 7-pin		WAS 7-pin	WAS 5-pin

Specification: DD - dynamic indicator L- left side P - right side

[www.was.eu](http://www.was.eu)



# W150DD – General information

Catalogue No.	1120 DD P	1120 DD P WAŚ 7	1121 DD P	1121 DD P WAŚ 5	1121 DD P WAŚ 7	1122 DD P	1122 DD P WAŚ 5	1122 DD P WAŚ 7	1123 DD L/P	1123 DD L/P WAŚ 7	1124 DD L/P	1124 DD L/P WAŚ 7
Rear position light	•	•	•	•	•	•	•	•	•	•	•	•
Rear indicator	•	•	•	•	•	•	•	•	•	•	•	•
Brake light	•	•	•	•	•	•	•	•	•	•	•	•
Rear fog light	•	•							•	•		
Reversing light	•	•	•	•	•				•	•	•	•
Licence plate light	on bottom	on bottom	on bottom	on bottom	on bottom	on bottom	on bottom	on bottom				
Connector		WAŚ 7-pin		WAŚ 5-pin	WAŚ 7-pin		WAŚ 5-pin	WAŚ 7-pin		WAŚ 7-pin		WAŚ 7-pin

## New references

Catalogue No.	1124 DD L/P WAŚ 5	1125 DD L/P	1125 DD L/P WAŚ 5	1125 DD L/P WAŚ 7	1144 L/P	1144 L/P WAŚ 5	1144 L/P WAŚ 7	1145 L	1145 L WAŚ 5	1145 L WAŚ 7	1146 P	1146 P WAŚ 5	1146 P WAŚ 7	1147 L/P	1147 L/P WAŚ 5
Rear position light	•	•	•	•	•	•	•	•	•	•	•	•	•	•	•
Rear indicator	•	•	•	•	•	•	•	•	•	•	•	•	•	•	•
Brake light	•	•	•	•	•	•	•	•	•	•	•	•	•	•	•
Rear fog light					•	•	•	•	•	•	•	•	•	•	•
Reversing light	•														
Licence plate light					on side	on side	on side	on bottom	on bottom	on bottom	on bottom	on bottom	on bottom		
Connector	WAŚ 5-pin		WAŚ 5-pin	WAŚ 7-pin		WAŚ 5-pin	WAŚ 7-pin		WAŚ 5-pin	WAŚ 7-pin		WAŚ 5-pin	WAŚ 7-pin		WAŚ 5-pin

Specification: DD - dynamic indicator L- left side P - right side

[www.was.eu](http://www.was.eu)





# W150DD – General information

## New references

Catalogue No.	1148 DD L/P	1148 DD L/P WAS 5	1148 DD L/P WAS 7	1149 DD L	1149 DD L WAS 5	1149 DD L WAS 7	1150 DD P	1150 DD P WAS 5	1150 DD P WAS 7	1151 DD L/P	1151 DD L/P WAS 5	1151 DD L/P WAS 7
Rear position light	•	•	•	•	•	•	•	•	•	•	•	•
Rear indicator	•	•	•	•	•	•	•	•	•	•	•	•
Brake light	•	•	•	•	•	•	•	•	•	•	•	•
Rear fog light	•	•	•	•	•	•	•	•	•	•	•	•
Reversing light												
Licence plate light	on side	on side	on side	on bottom	on bottom	on bottom	on bottom	on bottom	on bottom			
Connector		WAS 5-pin	WAS 7-pin		WAS 5-pin	WAS 7-pin		WAS 5-pin	WAS 7-pin		WAS 5-pin	WAS 7-pin

**Specification:** DD - dynamic indicator L- left side P - right side

## Possible connections:



Round cable



TYCO connector



Schlemmer connector



WAS connector

5 or 7 pin  
Depends of lamp version

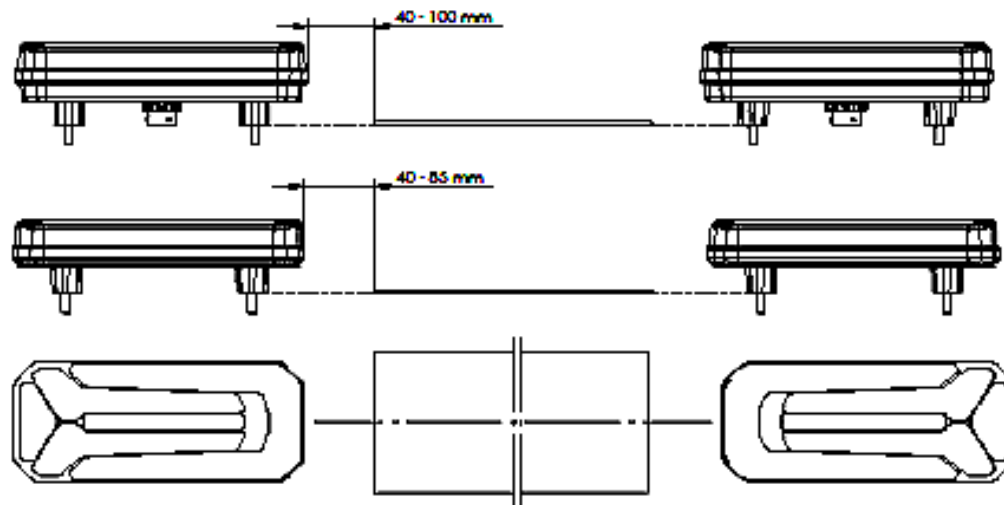
*Lamps with build-in connector  
have bigger thickness  
– please check the technical drawing*

[www.was.eu](http://www.was.eu)

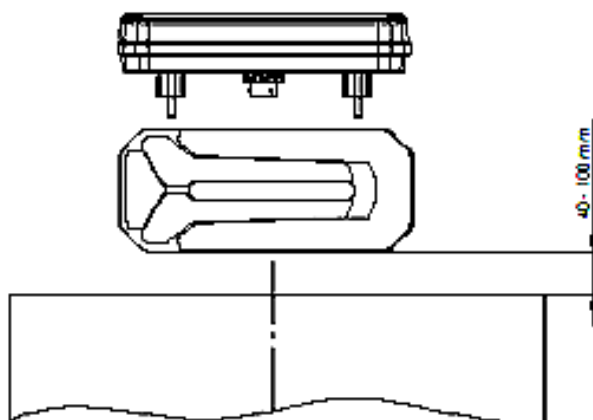


## ***License plate light information***

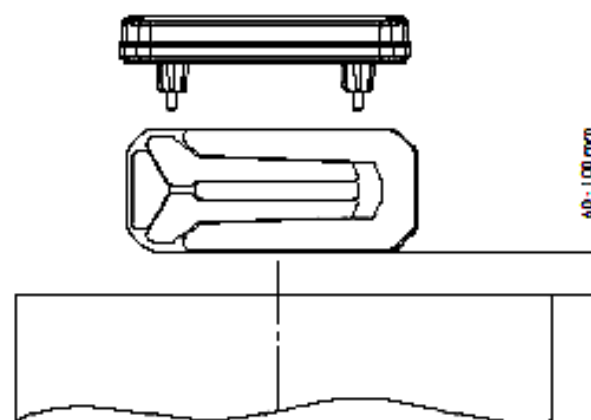
**OŚWIETLENIE TYLNEJ TABLICY REJESTRACYJNEJ 520 X 120 MM**  
**ILLUMINATION OF THE REAR REGISTRATION PLATE 520 X 120 MM**



**OŚWIETLENIE TYLNEJ TABLICY REJESTRACYJNEJ 340 x 240 MM**  
**ILLUMINATION OF THE REAR REGISTRATION PLATE 340 x 240 MM**



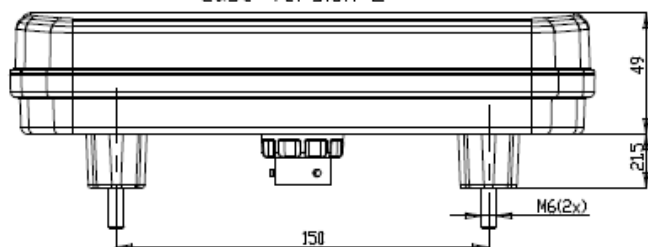
**OŚWIETLENIE TYLNEJ TABLICY REJESTRACYJNEJ 340 x 240 MM**  
**ILLUMINATION OF THE REAR REGISTRATION PLATE 340 x 240 MM**



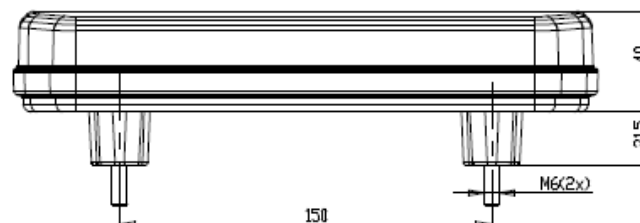


# W150/W150DD Technical drawing

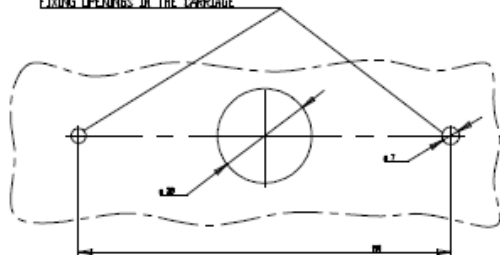
Wersja obudowy 2  
case version 2



Wersja obudowy 1  
Case version 1

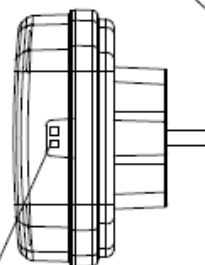


OTWORY W NADKOSZU DO MOCOWANIA  
FIXING OPENINGS IN THE CARRIAGE



OŚWIETLENIE TYLNEJ TABLICZY REJESTRACYJNEJ TYPU W150/L  
KŁOSZ BEZBARWNY  
REAR REGISTRATION PLATE DEVICE TYPE W150/L  
COLOURLESS LENS  
2 x LED

ŚRODEK ODWIESIENIA DLA KATEGORII S1  
CENTER OF REFERENCE FOR S1 CATEGORY



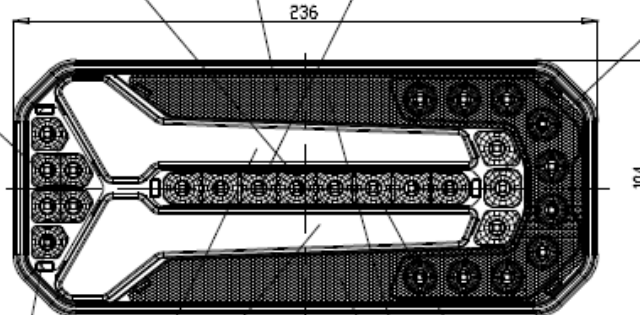
URZĄDZENIE ODBŁASKOWE BARWY CZERWONEJ TYPU W150/1A  
RETROREFLECTING DEVICE COLOUR RED TYPE W150/1A

ŚRODEK ODWIESIENIA DLA KATEGORII 2a, R  
CENTER OF THE REFERENCE FOR 2a, R CATEGORY

ŚWIATŁO HAMOWANIA W150/S1  
KŁOSZ BARWY CZERWONEJ  
STOP LAMP W150/S1  
RED COLOUR LENS  
6 x LED

ŚWIATŁO TYLNE POZYCYJNE W150/R  
KŁOSZ CZERWONY DYFUZYJNY  
REAR POSITION LAMP W150/R  
RED DIFFUSE COLOUR LENS  
16 x LED

ŚRODEK ODWIESIENIA DLA KATEGORII 1A  
CENTER OF REFERENCE FOR 1A CATEGORY



ŚRODEK ODWIESIENIA DLA KATEGORII AR  
CENTER OF REFERENCE FOR AR CATEGORY

Wersja wykonania 2  
Product version 2

ŚWIATŁO COFANIA W150/AR  
KŁOSZ BEZBARWNY  
REVERSING LAMP W150/AR  
COLOURLESS LENS  
3 x LED

ŚWIATŁO TYLNE KIERUNKU JAZDY W150/2a  
KŁOSZ BARWY ŻÓLTEJ SAMOCHODOWEJ  
REAR DIRECTION INDICATOR LAMP W150/2a  
AMBER COLOUR LENS  
8 x LED

MIEJSCE NA NUMERY HOMOLOGACJI  
PLACE FOR THE APPROVAL NUMBERS

ŹRÓDŁA ŚWIATŁA  
- kierunek jazdy: 8 x LED 12V 2,2W; 24V 4,3W  
- hamowanie: 6 x LED 12V 1,4W; 24V 2,9W  
- pozycyjne tylne: 16 x LED 12V 1,4W; 24V 2,9W  
- cofanie: 3 x LED 12V 2,2W; 24V 4,3W  
- oświetlenie tablicy rejestracyjnej: 2 x LED 12V 0,7W; 24V 1,4W

LIGHT SOURCES  
- direction indicator: 8 x LED 12V 2,2W; 24V 4,3W  
- stop: 6 x LED 12V 1,4W; 24V 2,9W  
- position: 16 x LED 12V 1,4W; 24V 2,9W  
- reversing: 3 x LED 12V 2,2W; 24V 4,3W  
- illuminating registration plate: 2 x LED 12V 0,7W; 24V 1,4W

NINIEJSZY RYSUNEK JEST CZĘŚCIĄ  
WNIOSKU O HOMOLOGACJĘ  
THIS DRAWING IS A PART OF  
THE APPLICATION FOR APPROVAL

GODZIKOWICE, 12-09-2016