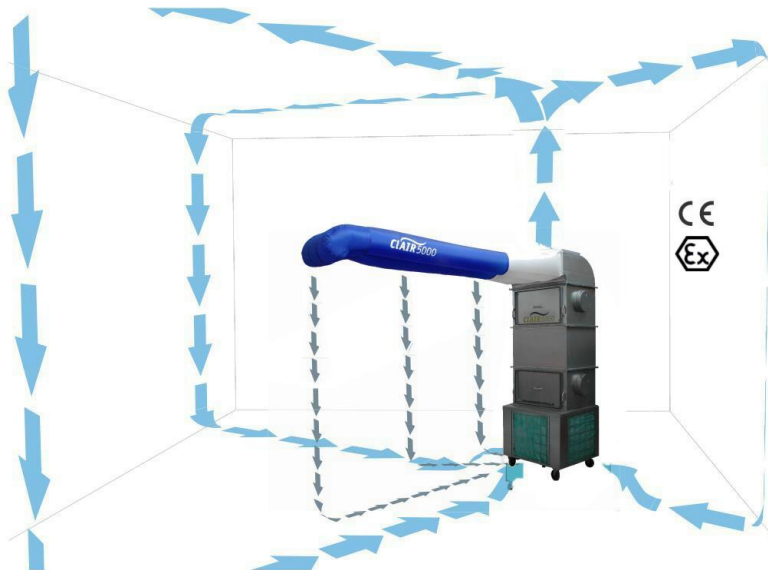


# CLAIR5000

K

M

W



**KMWE – Karosserie-,  
Messsystem- und  
Werkstatteinrichtungen  
Michael Köberlein**

Gewerbestraße Nord 7  
D-86857 Hurlach  
Tel +49 (0)82 48 90 17 52  
Fax +49 (0)82 48 90 17 53  
Email: koerberlein@kmwe.de  
[www.werkstatteinrichtung.de](http://www.werkstatteinrichtung.de)

## Mobile circulating air extraction system

mobile and ready to use

optimal for Smart Repair

Room heat is not lost

Quality of painting significantly better than with suction wall

low operating costs (about 1,40 € / h incl. power and filter)

universal application



## DIFFERENT MODELS

### Tech.data all models:

Power consumption: 400V 1.35 kW, noise level: 69 dB (A), air flow 4,900 m<sup>3</sup> / h

### Clair 2500

Suction unit with circulating air and exhaust air connection, without plenum incl. 5-fold filter stages (pre-filter, filter cells, fine dust compact filter, activated carbon filter unit with 120 l activated carbon, filter mat)

suitable for cleaning work areas and absorbing toxins

only partially suitable for painting, as without air plenum

height: 1,80 m weight 245 Kg



### Clair 3000

Suction unit with recirculation and exhaust air connection incl. 3-fold filter stages (pre-filter, filter cells, fine dust compact filter) with plenum and two empty channels instead of filter channel and activated carbon.

not suitable for toxic substances, as without activated carbon

height: 2,65 m weight 175 Kg



### Clair 5000

Suction unit with circulating air and exhaust air connection, incl. 5-fold filter stages (pre-filter, filter cells, fine dust compact filter, activated carbon filter unit with 120l activated carbon, pocket filter) with plenum

suitable for cleaning work areas, for sanding, for painting (Spot Repair)

height: 2,65 m weight 285 Kg



## Extraction tables for connection to CLAIR

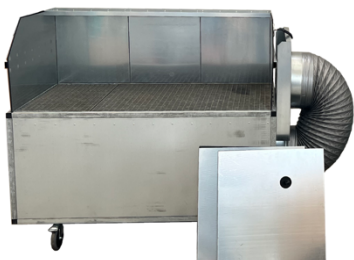
For painting small parts, the extraction table, consisting of a grating, pre-filter and Z-Liner filter, is connected to the Clair 5000 as an extraction device with a 355 mm hose connection. To do this, the front filter unit is removed from the Clair and the connection for the hose is inserted.

The plenum is placed above the table so that the paint mist and dust are pushed down and thus increase the extraction capacity.

The devices correspond to the applicable CE and ATEX (Zone 2 and 22) guidelines.



Illustrations contain special accessories



### CLAIR-T1 (for connection to CLAIR 5000)

A mobile suction table with 4 wheels (2 with brakes) that is connected to the front suction surface of the Clair5000 with a hose. The plenum is placed above the extraction table and pushes the air from top to bottom to improve the painting result. The cleaning takes place in the Clair5000 with its sophisticated filter system.

**Dimensions:** width: 1460mm, depth: 800mm, total height: 1300mm, working height 800mm (other dimensions possible on request),

**Consisting of:** extraction table CLAIR-T1 connecting hose 355mm incl. 2 blind plates for the side filters of the Clair 5000.



### CLAIR-T2 (for connection to CLAIR 2500/5000)

Like the CLAIR-T1, however, a hose is connected to the upper pipes of the downdraft table at the air outlet to force air from top to bottom into the filter surface. The tubes can be rotated to adjust the air from above.

**Table dimensions:** width 1500mm: useful width inside 1460mm, depth: 800mm, total height: 2000mm, working height 800mm (other dimensions possible on request),

**Consisting of:** extraction table CLAIR-T2 connection hose 355mm incl. connecting piece, 2 blind plates for the side filters of the Clair 2500.



**Produced complete in Germany**



all components from Germany and Austria

## various possible uses



Spot repair on car



Spot repair on helicopter





Extraction of paint mist on a painting table



Painting of railway



for low rooms with short filter channel (minimum room height 2.65 m) Device only 2.43 m instead of 2.65 m height



high variant of 3.13 m to 4.63 m tested

### **UNIVERSAL FUNNEL WITH LIFT**



Paint in the vehicle interior





painting on the roof



with hopper placed on trolley, e.g. for spraying underbody protection

## Schadgastabelle für Aktivkohle

1 = Aufnahmefähigkeit	sehr gut	bis 40gew%
2 = Aufnahmefähigkeit	gut	bis 15gew%
3 = Aufnahmefähigkeit	befriedigend	bis 5gew%
4 = Aufnahmefähigkeit	schlecht	< 2gew%
* = Sonderkohle erforderlich		

Die Adsorptionsfähigkeit der Aktivkohle für die verschiedenen Schadgase ist abhängig von der Konzentration, Feuchte, Temperatur, Kohledurchmesser, Kontaktzeit im Aktivkohlefilter sowie der Staubvorfilterung.

Angaben ohne Gewähr.

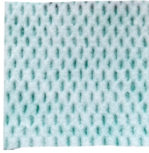
Acetaldehyd	3*	Diethylketon	1	Körpergerüche	1	Pestizide	1
Aceton	2	Diethylether	2	Kohlendioxid	3	Phenol	1
Acrolein	2*	Dibromethan	1	Kohlenmonoxid	4	Phosgen	2
Acrylsäure	1	Dichlorbenzol	1	Kresol	1	Propan	3
Acrylsäurenitril	1	Dichlorethan	1	Küchengerüche	1	Propanol	1
Alkoholgerüche	1	Dichlorethylen	1	Lackdämpfe	1	Propionaldehyd	2*
Ameisensäure	2	Dichlorpropan	1	Lebensmittelgerüche	1	Propionsäure	1
Amine	3*	Diesel	1	Lysol	1	Propylchlorid	1
Ammoniak	3*	Dimethylanilin	1	Menthol	1	Propylether	1
Amylacetat	1	Dimethylsulfat	1	Mercaptane	1	Propylmercaptan	1
Amylalkohol	1	Dioxan	1	Mesityloxid	1	Propylen	3*
Amylether	1	Dipropylketon	1	Methan	4	Pyridin	1
Anilin	2*	Essigsäure	1	Methanol	2	Quecksilberdämpfe	3*
Asphalt (Teer)Gerüche	1	Essigsäureanhydrid	1	Methylacetat	2	Radioaktive Stoffe	4*
Benzin	1	Essigsäurepropylester	1	Methylacrylat	1	Salpetersäure	2*
Benzol	1	Ethan	4	Methylbromid	2	Schlachthofgerüche	2
Blausäure	4	Ethanol	1	Methylbutylketon	1	Schwefelkohlenstoff	1
Brom	1	Ether	2	Methylchlorid	2	Schwefelwasserstoff	3
Bromwasserstoff	3	Ethylacetat	1	Methyläther	2	Schwefeldioxid	3*
Butadien	2	Ethylacrylat	1	Methyläthylketon	1	Schwefeltrioxid	2*
Butan	3	Ethylbenzol	1	Methylisobutylketon	1	Schwefelsäure	1
Butanon	1	Ethylbromid	1	Methylmercaptan	1	Selenwasserstoff	3
Butylacetat	1	Ethylchlorid	2	Methylcyclohexan	1	Silicium-Ethylverbindungen	1
Butylalkohol	1	Ethylmercaptan	2*	Methylcyclohexanol	1	Stickstoffdioxid	3
Butylchlorid	1	Ethylen	4*	Methylcyclohexanon	1	Styrol	1
Butylether	1	Ethylenchlorid	1	Metylenchlorid	1	TDO	1
Butylen	3	Ethylenoxid	3	Milchsäure	1	Teer	1
Butyraldehyd	2*	Fischgerüche	1	Monochlorbenzol	1	Terpentin	1
Butyrsäure	1	Fluorwasserstoff	3	Nitrobenzol	1	Tetra	1
Caprylsäure	1	Formaldehyd	3*	Nitroethan	1	Tetrachlorethan	1
Carbolsäure	1	Frigene	2	Nitroglycerin	1	Tetrachlorethyloen	1
Chlor	2	Gummi	2	Nitromethan	1	Toluon	1
Chlorbenzol	1	Harnsäure	1	Nitropropan	1	Trichlorethan	1
Chloropren	1	Heptan	1	Nitrotoluol	1	Trichlorethylen	1
Chloroform	1	Heptene	1	Obstlagergärung	1	Valeriansäure	1
Chlornitrosopropan	1	Hexan	2	Octan	1	Valeraldehyd	1*
Chlorpikrin	1	Hexene	2	Octen	1	Verbrennungsgerüche	2
Chlorethanol	1	Isopropylacetat	1	Ozon	1	Verwesungsgerüche	1
Chlorwasserstoff	2	Isopropanol	1	Öle- Fette	1	Vinylchlorid	1
Cyclohexan	1	Isopropylether	1	Palminsäure	1	Wasserstoff	4
Cyclohexanol	1	Jod	1	Paradichlorbenzol	1	Weinessig	1
Cyclohexanon	1	Jodoform	1	Pentan	2	Xexin	3
Cyclohexan	1	Jodwasserstoff	2	Pentanon	1	Xylol	1
Decan	1	Kerosin	1	Pentin	2*	Zigarettenrauch	1
Detergentien	1	Kläranlagengerüche	1	Perchlorethylen	1		



## DIFFERENT FILTERS



prefilter **CL0001**



or prefilter **CL00A1**



mainfilter **CL0002**



pocketfilter **CL0003**



fine dust cassette-  
filter **CL0004**



standard-carbonfilter **CL0005**  
ca. 110 kg Gewicht



bigger carbonfilter **CL0007**  
ca. 165 kg weight for for increased  
absorption of toxins (17cm higher)  
(reinforced wheels required)

## SPECIAL FILTERS

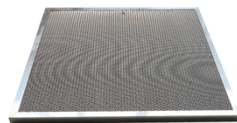
for dedusting or picking up non-moist substances



dustprefilter **CL0009**



mainfilter for dust **DUST0002.**



Metallfilter for welding fume and Dust  
**CLAIRWELD**

## ACCESSORIES GENERAL



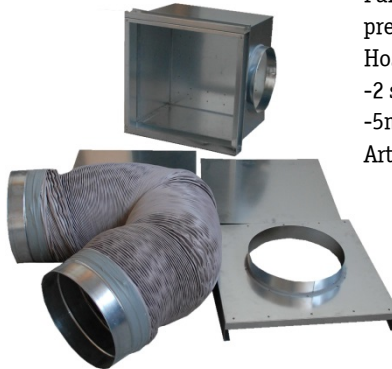
Wall duct with flap  
Art.Nr. **CLAIRWAND**



exhaust hose 10m  
Art.Nr. **CLAIRAB**

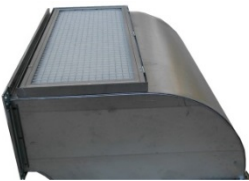


Welding fume filter  
mats  
Art.Nr. **CLAIRWELD**



Funnel set consisting of:  
Funnel for holding the Clair  
pre and main filters  
Hose connection to Clair  
-2 side covers  
-5m hose  
Art.Nr. **CL-TRICHT**

## EQUIPMENT CLAIR5000



Filter brake frame to minimize the air velocity at  
the upper air outlet.

**NECESSARILY TO USE**

Art.Nr. **CLFIL**



Extension 500mm, (up to 4  
pieces possible) Art.Nr. **ClairV500**



250mm shorter pocket filter channel  
Art.Nr. **CLKANAL235**



Test device for activated  
carbon

Art.Nr. **AKS5000**

Gesamthöhe Clair5000 = 2,43m





## OTHER SORTIMENT:



**Aluminum ladder Art.Nr.305A,**  
aluminum platform, height adjustable (522mm-905mm)  
Length adjustable (1090mm-1750mm)  
weight 15 kg, load capacity 150 kg,



**Partition wall with feet Art.Nr.188.369815**  
Dimensions 200x200 cm with orange curtain.  
Suitable as a welding protection wall and painting protection wall  
Curtain 220 cm wide, 160 cm high, 40 cm free space below



**QUICK PULLER** is a portable dent spotter with a slap hammer handle, light weight and the bulk is right on the tool next to the dent tip. Immediately ready for use and significantly reduces repair times.



Various infrared and UV dryers from simple to digitally controlled with temperature monitoring and 4 programs



**Fitim Jollift lifting platforms and straightening systems**  
**Universal and durable!**



Various models, above and below ground, only as a lifting platform or as a straightening system are available. From 3,000 kg - 5,000 kg load capacity All platforms can be equipped with swivel arms and/or plates for lifting on the wheels. For the painting area, the systems can be delivered in ATEX version



# Urkunde

über die Eintragung des  
Gebrauchsmusters Nr. 20 2015 102 853

Bezeichnung:

Luftabsaugvorrichtung, insbesondere Umluftabsauggerät, für geschlossene  
Räume

IPC:

B01D 46/12

Inhaber/Inhaberin:

Köberlein, Michael, 86857 Hurlach, DE


Tag der Anmeldung:

02.06.2015

Tag der Eintragung:

18.06.2015

Die Präsidentin des Deutschen Patent- und Markenamts



Cornelia Rudloff-Schäffer

München, 18.06.2015

