

HAN SUN

Window Regulator

IATF 16949 Certified

100% Fitment Guarantee
for all SKUs

Design Improvement
for better durability and
components strength

100% Online Inspection
for every piece produced

HANSUN Motor
Made in Taiwan

Production All in House
for total quality control

Good CPK 1.33-1.67
for quality components and
final product

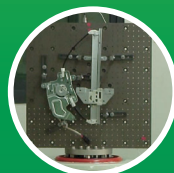
**32 Global Standard
Validations**
to ensure form, fit and function
meet standards



20,000 Times
Door Life Cycle Test



6,500 Times
Door Slam Test



5 Hours
Weighted Vibration Test



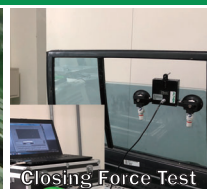
20,000 Times
-30°C ~ 85°C Life Cycle Test



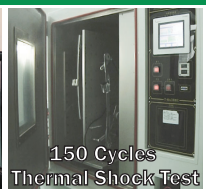
9,000 Times
Cable Life Test



Burglary Test



Closing Force Test



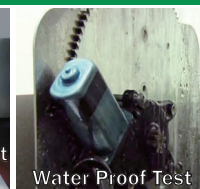
150 Cycles
Thermal Shock Test



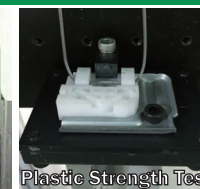
72 Hours
Corrosion Test



96 Hours Creep Test
85°C Weighted



Water Proof Test



Plastic Strength Test



Pulling Force Test

CHOOSE RELIABILITY. CHOOSE HANSUN.

Over 3,000 doors and 10,000 original samples to ensure
100% fitment and performance.

Han Yale Ind. Co., Ltd.
www.hanyale.com



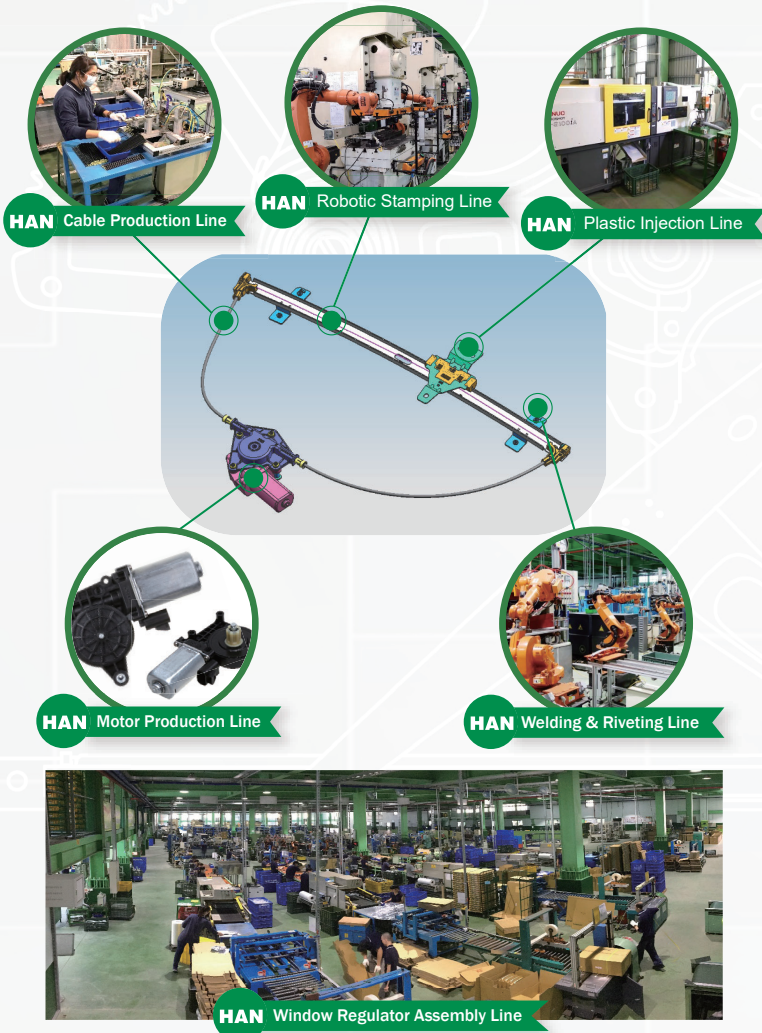


Han Yale Taiwan Headquarter

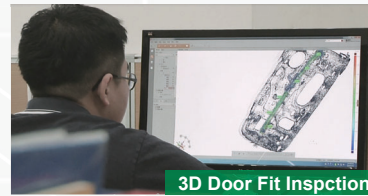


Han Yale 2nd Facility

Production All in House / Made in Taiwan



Quality Control from Design to Production



3D Door Fit Inspection

3D Door Fitting Inspection
We utilize all kind of advanced software to speed up new product development. More than 100 new SKUs launched every year.



500 Ton Progressive Die Stamping

500 Ton Progressive Die Stamping
In-house stamping process gives us quality control from raw material to finished product and ensures consistent quality.



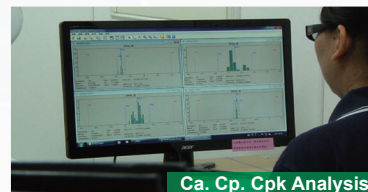
Automated 2.5D Measuring Machine

Automated 2.5D Measuring Machine
IQC and IPQC for components become more efficient and precise.



100% Online Inspection

100% Online Inspection
Go / No Go design in online inspection for finished products. Before packaging and shipment, we inspect every piece of our window regulators by real-time monitoring system.

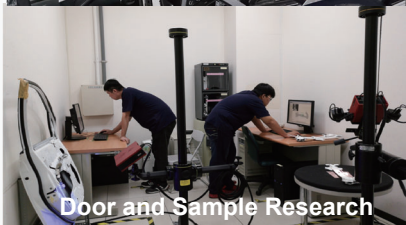


Ca. Cp. Cpk Analysis

Ca. Cp. Cpk Analysis
We use analytic software to perform real-time monitoring and off-line analysis during the quality control process, such as Ca. Cp. Cpk analysis to maintain production consistency, reduce process variability and increase product quality.



Over 3,000 Doors For Fitment Guarantee Program



Door and Sample Research



Product Validation Test



Door Inspection During the Production



Continuous Improvement