

## FH1001 SERIES FOR BOLT ON TYPE FUSES



### Specifications :

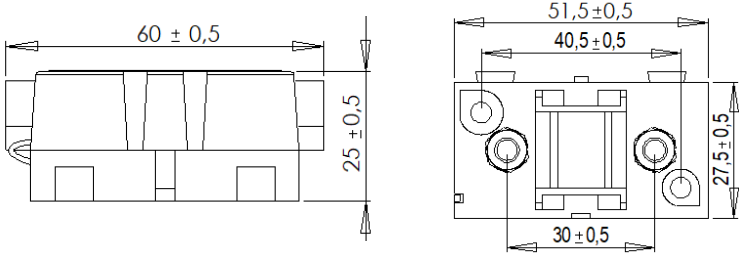
Max. Fuse Rating :	200A
Voltage :	32 V
Studs :	M5 Threaded
Material :	PA66 GF 30



### Description :

- Use with bolt on type fuses up to 200A. Includes Protective cover & terminal protectives.
- M5 threaded studs and hex-nuts with lock washers.
- Modular, to create multi-position holder.
- Fuse not included. But fuse can added on request.

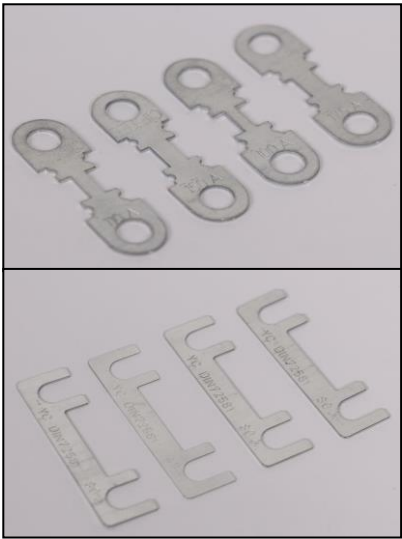
### Dimensions : Dimensions are in mm



### Ordering Information :

Part Number	Packing Size
FH1001B-DK200	200 pcs. in a Carton Box

### Related Products :



Melting Strip (U and O Type)

(Product codes: S3XXX, S4XXXA and S4XXXB)



MidiType Fuses

(Product codes: S5XXX)

FH1002 SERIES FOR BOLT ON TYPE FUSES



Specifications:

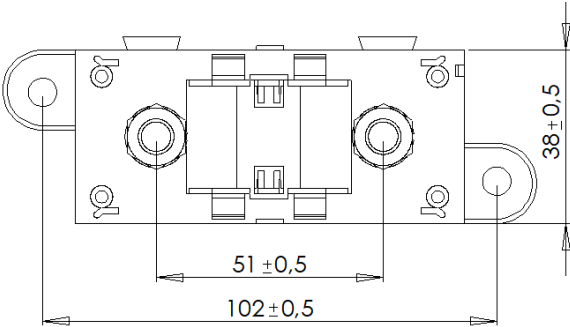
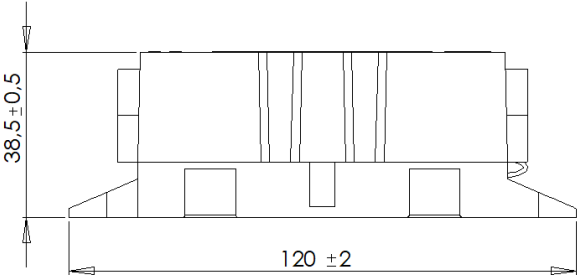
Max. Fuse Rating : 500A  
Voltage : 32 V  
Studs : M8 Threaded  
Material : PA66 GF 30



Description :

- Use with bolt on type fuses up to 500A. Includes Protective cover & terminal protectives.
- Includes M8 threaded studs and hex-nuts with lock washers.
- Modular, to create multi-position fuse holder.
- Fuse not included. But fuse can added on request.

Dimensions : Dimensions are in mm



Ordering Information :

Part Number	Packing Size
FH1002B-DK50	50 pcs. in a Carton Box

Related Products :



MegaType Fuses (product codes: S6XXX)