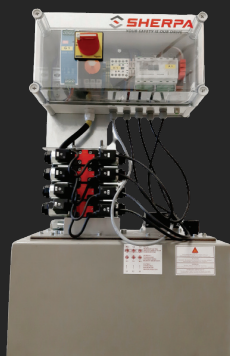


Play Detector for Cars and Commercial Vehicles

AST-Pit 4.3 - 20.3

MODULES



Play Detector

- Play detector hydraulic for working pit
- Two floor assemblies with hydraulic cylinder for lateral and lengthwise movement
- Hot-dip galvanised test plates on low-maintenance and low-wearing plastic sliding bearings or hard chrome steel shafts

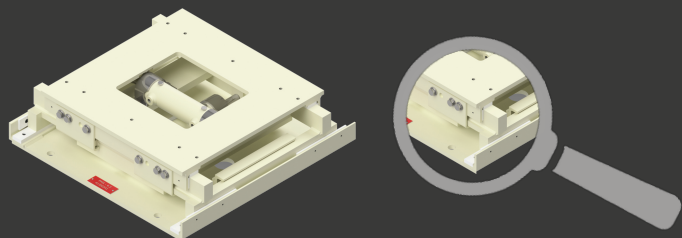
Hydraulic Unit

- High-performance hydraulic unit with tank and attached electrical / control box with main switch, switching and control elements
- Operating unit with rocker switch and 12m cable

TYPES

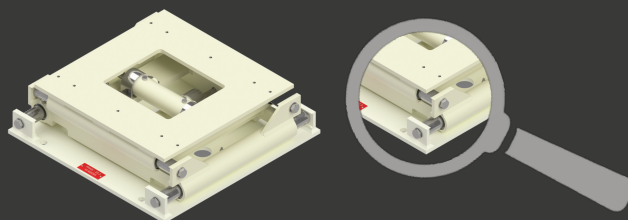
AST-Pit 4.3, 8.3 und 20.3

Floor assembly with plastic sliding bearings



AST-Pit 20.3 SW

Floor assembly with hard chrome steel shafts



The specific movement process of the test plates makes detached or loose axle and steering parts immediately visible. The type series AST-Pit, together with the respective options, complies with EU Directive 2014/45/EU.

AST-Pit 4.3 - 20.3

Today's vehicle testing technology must keep pace with the ever-changing requirements of the vehicles to be tested. The company SHERPA Autodiagnostik, based in Germany, has been delivering high-tech testing technology for around 30 years – technically always state-of-the-art and of highest quality.

The play detectors, type „AST-Pit 4.3“ to „AST-Pit 20.3“, with broad, hot-dip galvanised test plates offer sufficient contact area and are extremely robust. The powerful, hydraulically actuated test plates move against each other laterally and lengthwise and indicate worn-out or loose axle and steering parts.

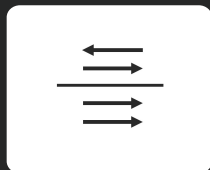
OPTIONS



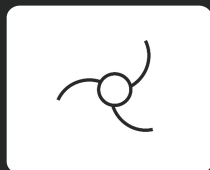
Foundation trays (2 pieces) as permanent casing, wet primed or hot-dip galvanised



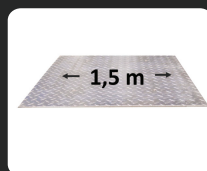
LED hand lamp incl. cable remote control or codable radio remote control



Double-sided concurrent transverse and longitudinal movement for commercial vehicles



Automatic plate movement, with adjustable number of movements and changeover speed



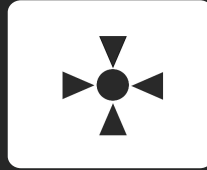
Test plates with 1.5 m width (2 pieces)



Hydraulic tubes 8 x 4.5 m



Single wheel movement



Automatic mid-position, via program-controlled signal sensor

TECHNICAL DATA

Play Detector

	„AST-Pit 4.3“	„AST-Pit 8.3“	„AST-Pit 20.3“ / SW
Axle load max.	4 t	8 t	20 t
Transverse and longitudinal plate movement	100 mm (± 50 mm)	100 mm (± 50 mm)	100 mm (± 50 mm)
Test plate dimensions (L x W x H)	750 x 750 x 8 mm	750 x 750 x 8 mm	750 x 900 x 12 mm
Device dimensions without cover plate (L x W x H)	600 x 600 x 160 mm	600 x 600 x 160 mm	600 x 600 x 160 mm
E-motor output for hydraulic unit	4 kW	4 kW	4 kW
Hydraulic pressure	200 bar	200 bar	200 bar
Thrust per cylinder	32 kN	32 kN	32 kN
Lifting speed	ca. 6 cm/s	ca. 6 cm/s	ca. 6 cm/s
Electrical / control box, housing dimensions (L x W x H)	370 x 185 x 130 mm	370 x 185 x 130 mm	370 x 185 x 130 mm
HLP 46 hydraulic oil fill level	20 l	20 l	20 l
Supply voltage	400 V, 50 Hz, 16 A slow fuse	400 V, 50 Hz, 16 A slow fuse	400 V, 50 Hz, 16 A slow fuse

SHERPA Autodiagnostik GmbH

Wernher-von-Braun-Straße 3
84539 Ampfing | Germany
Tel.: +49 (0) 8636 6099800 | Fax: -6099801
E-Mail: info@sherpa.de | www.sherpa.de

Your SHERPA Partner