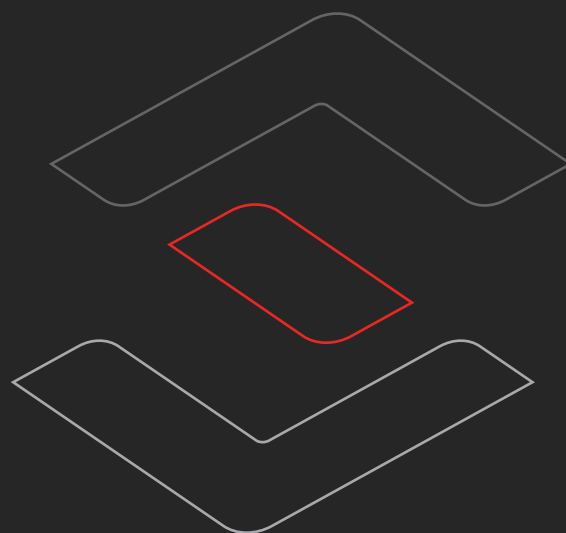
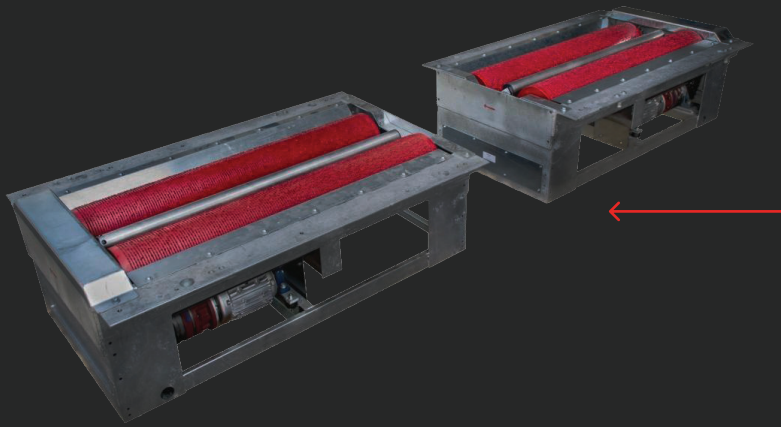


Roller Brake Tester for Cars and Commercial Vehicles

BPS Twin 13.0 - 18.7

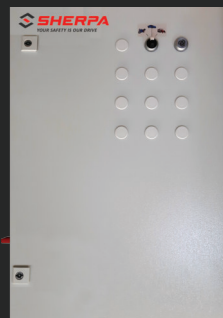


MODULES



Roller Brake Tester

- Hot-dip galvanised roller set
- Planetary gear motors: Enormous motor power with minimal power connection values
- Standard raised roller by 40 mm on the access side, exit side at ground level
- Wear-free, electronic DMS measuring system with shear force transducer
- Standard test program for electronic parking brakes



Electrical / Control Box

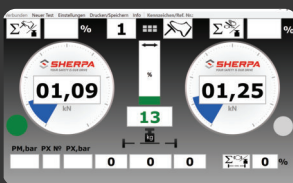
- With motor protection switch, control electronics, operating elements and main switch lockable
- Splash water protected IP 54

DISPLAY MODES



Pointer Analog Display for BPS Twin 13.0 - 18.7 (with optional LED displays)

- Large, easy to read pointer analog display
- Brake force display with two measuring ranges 0-6 / 0-40 kN (electronic switching)
- Signal lamps for measurement range display and slip switch-off
- Optionally also available with background lighting



PC-Software "BPS-TV"

- The PC Software "BPS-TV" transmits data directly to the Windows 10 PC or Laptop
- Brake force, difference, axle number, brake type, axle and wheel weight, deceleration, brake pressures and operating mode are shown clearly and easy to read. The printout is processed via the PC



LED Display "Dig-4" (RGB)

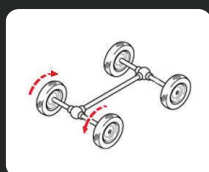
- With a resolution of 8x64 LEDs for all roller brake testers and test lanes, as a single or combined display
- Variable, dynamic display format
- Digital display with several display ranges for brake, difference, side slip, weight and pressure values

BPS Twin 13.0 - 18.7

Today's roller brake testers must keep pace with the ever-changing requirements of the vehicles to be tested. The company SHERPA Autodiagnostik, based in Germany, has been delivering high-tech testing technology for around 30 years – technically always state-of-the-art and of highest quality.

The roller brake testers, type "BPS Twin 13.0" to "BPS Twin 18.7", are based on a modular system. They are hot-dip galvanised and feature a test program for electronic parking brakes as standard. The installed planetary gear motors enable enormous motor power with minimal power connection values. The testers can optionally be equipped with the automatic all-wheel detection patented by SHERPA and the also patented EDOS Drive out assistance.

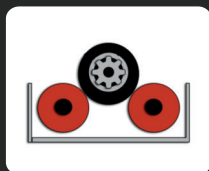
OPTIONS



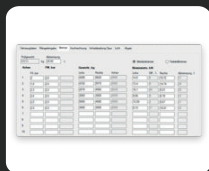
Patented automatic all-wheel detection with fully automatic testing (Patent EP 1931957B1)



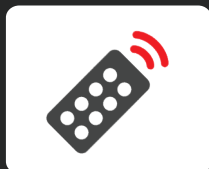
EDOS Drive out assistance with electronic rotation direction controller (Patent EP 2594916)



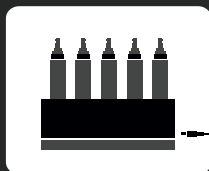
Plastic-coated rollers



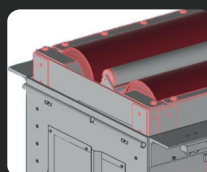
SHERPA-Office database for customer and vehicle data: visual defects file, saving measurement data, printout, network module for PC networking



Remote controls Radio or Infra-red: up to 20-times encodable; measured value storage and manual test unit control



Radio pressure transducer (pneumatic, hydraulic, pedal force): measured pressures on digital displays, PC program or print-out

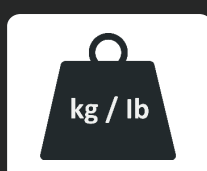


Hydraulic roller raising for BPS Twin 13.0, 13.8 and 18.7: lifting force max. 12 t axle load; stroke max. 220 mm; optional Variable Stop Function



Reinforced drive motors:

BPS-Twin 13.0: 2 x 9 kW
BPS-Twin 13.8-18.0: 2 x 11 kW
BPS-Twin 18.7: 2 x 11/15 kW
planetary gear: enormous motor power with minimal power connection values



Weighing device static / dynamic:

very precise and reliable measurement of the respective test weight by 8 shear force transducers

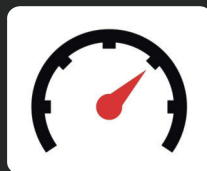


Tractor specification: increased roller centre distance up to 490 mm, both running rollers raised by 40 mm; testable wheel size up to 48 inches



Load simulator type LS-12 (10 t):

hydraulic unit with pressure controller and pressure display



2 test speeds (2.6 and 5.2 km/h)

by installing a frequency converter in the electrical / control box

With SHERPA roller brake testers, you can quickly, easily and clearly convey the current condition of the vehicle's brakes to your customers.

TECHNICAL DATA

Display

Analog display, Dimensions (L x W x H)	810 x 670 x 70 mm
Display range for brake value	0 - 6 kN / 0 - 40 kN

Control box

Electrical / control box, Dimensions (L x W x H)	700 x 500 x 250 mm
with 2 test speeds (frequency converter)	800 x 600 x 250 mm

Roller Brake Tester / Roller Set	“BPS-Twin 13.0” / “BPS-Twin 13.8”	“BPS-Twin 18.0”	“BPS-Twin 18.7”
	Split roller set, hot-dip galvanised, motors below the rollers		
Traversable axle load max.	13 t / 18 t	18 t	18 t
Roller length	1,000 mm	1,000 mm	1,150 mm
Roller diameter	205 mm	268 mm	268 mm
Roller centre distance	420 mm	440 mm	465 mm
Test speed	Planetary gear with 2.6 km/h (optional 5.2 km/h)	Planetary gear with 2.6 km/h (optional 5.2 km/h)	Planetary gear with 2.6 km/h (optional 5.2 km/h)
Drive capacity	2 x 7.5 / 2 x 9 kW (2 x 9 kW) / (2 x 11 kW)	2 x 9 kW (2 x 11 kW)	2 x 9 kW (2 x 11 / 2 x 15 kW)
Testable axle load	at 50% deceleration 12 t / 15 t	at 50% deceleration 14 t (optional 16 t)	at 50% deceleration 14 t (optional 16 t / 18 t)
Supply voltage	3 x 400 V 50 Hz	3 x 400 V 50 Hz	3 x 400 V 50 Hz
Feed line / fuse protection	5 x 6 mm² / 32 A	5 x 6 mm² / 32 A	5 x 6 mm² / 32 A
With options “2 test speeds”, “roller raising”, “11/15 kW motors” or „EDOS“	5 x 10 mm² / 50 A	5 x 10 mm² / 50 A	5 x 10 mm² / 50 A
Dimensions per roller set (L x W x H)	1,220 x 1,045 x 545 mm	1,220 x 1,045 x 545 mm	1,410 x 1,145 x 545 mm
Weight per roller set	420 kg	460 kg	460 kg
Wheel deflector	inner	inner	outer

SHERPA Autodiagnostik GmbH
Wernher-von-Braun-Straße 3
84539 Ampfing | Germany
Tel.: +49 (0) 8636 6099800 | Fax: -6099801
E-Mail: info@sherpa.de | www.sherpa.de

Your SHERPA-Partner