



Traversable sliding cover

Type SAM 102 R

- Fully traversable, 13 t axle load or more
- Flush with the hall floor
- Control via operating element installed in the hall area
- Work on various different levels possible
- The sliding cover complies with the requirements of DGUV 109
- Optimum safety for your employees
- TÜV type-tested and certified system
- ISO 9001:2015 certified production facility
- DIN EN 1090 certified production facility
- Various patents have been granted
- Top product quality
- MADE in Germany

The benefit for you: Full use of the entire hall area.

Optimum accident prevention.

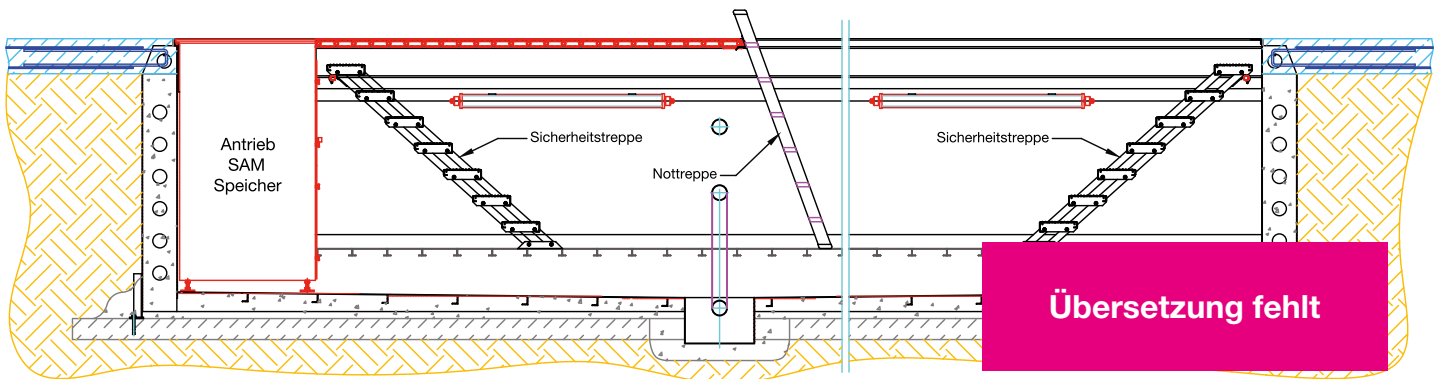
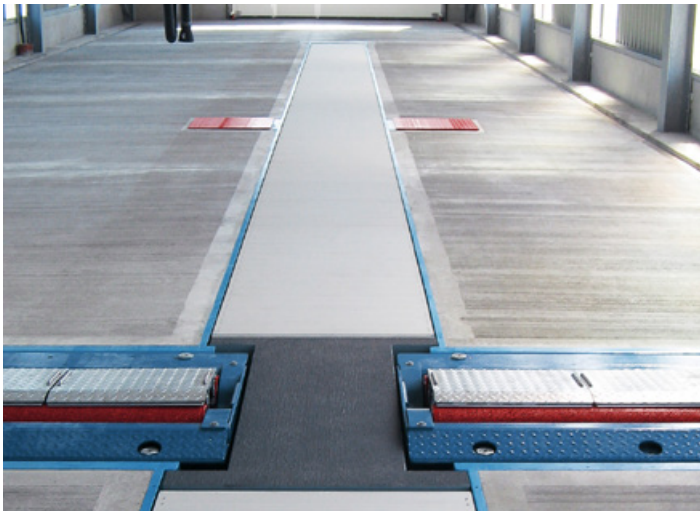
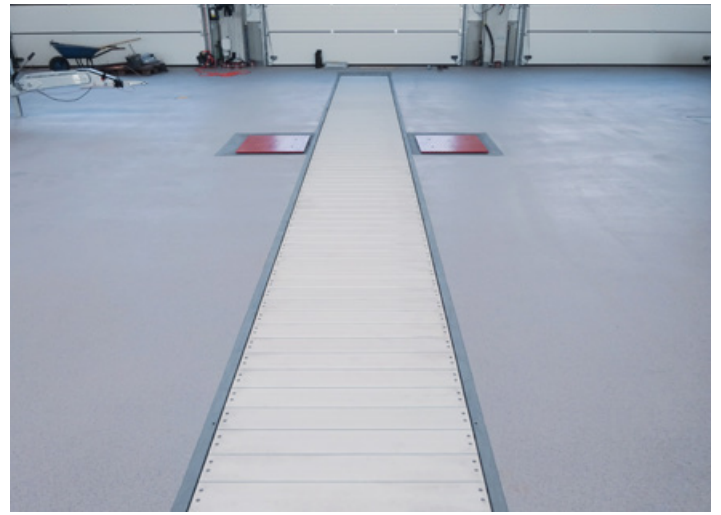
- System available as return flow or storage variant
- Aluminium or hot-dip galvanised steel design
- The aluminium version has a non-slip surface
- V2A bush conveyor chain with self-lubricating Permaglide bushes

Technical description

Axle load:	13 t
Traffic load:	in accordance with SLW 60, DIN EN 1991-1-1:2010-12, DIN EN 1991-1-1 /NA:2010-12, DIN Technical Report 101:2009-03 and DIN 4085 Supplement 1:2011-12
Length:	according to customer requirements
Inside width:	1.02 m in clearance
Working width:	1.62 m in clearance
Standing height:	according to customer requirements



We have the solution to every challenge. Let one of our specialists offer you individual advice on your project.

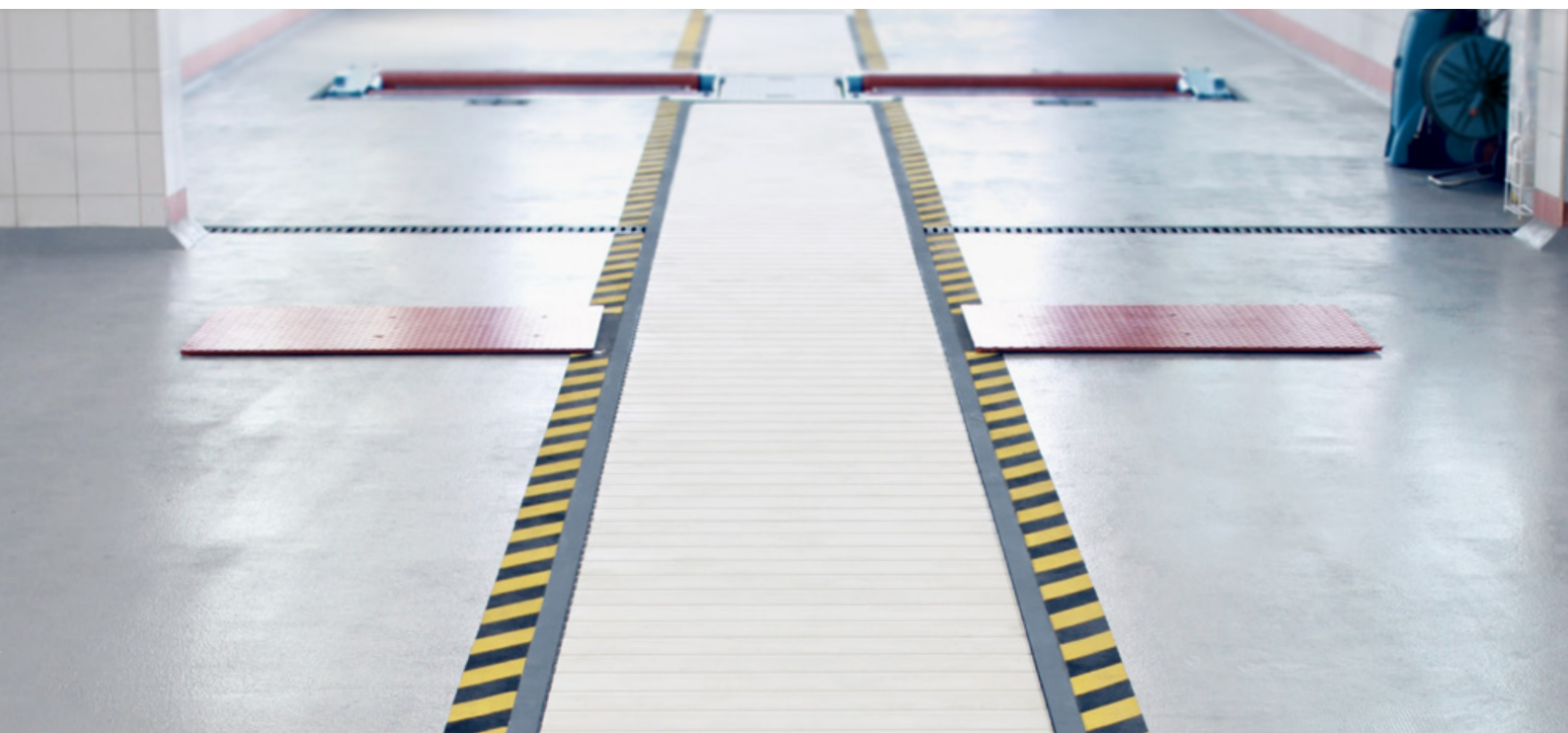


Balzer GmbH & Co. KG

Zeissweg 9
87700 Memmingen
Phone: +49 (0)8331 99041-0
info@balzer-mm.de

Prefabricated assembly pits
Umweltgrube®
Sliding covers
Rail vehicle pits

www.balzer-mm.de



Sliding cover light design

Type SAL 102 R

- Load 1.5 t axle load
- Flush with the hall floor
- Control via operating element installed in the hall area
- Work on various different levels possible
- The sliding cover complies with the requirements of DGUV 109
- Optimum safety for your employees
- TÜV type-tested and certified system
- ISO 9001:2015 certified production facility
- DIN EN 1090 certified production facility
- Various patents have been granted
- Top product quality
- Top quality, made in Germany

The benefit for you: Optimum accident prevention

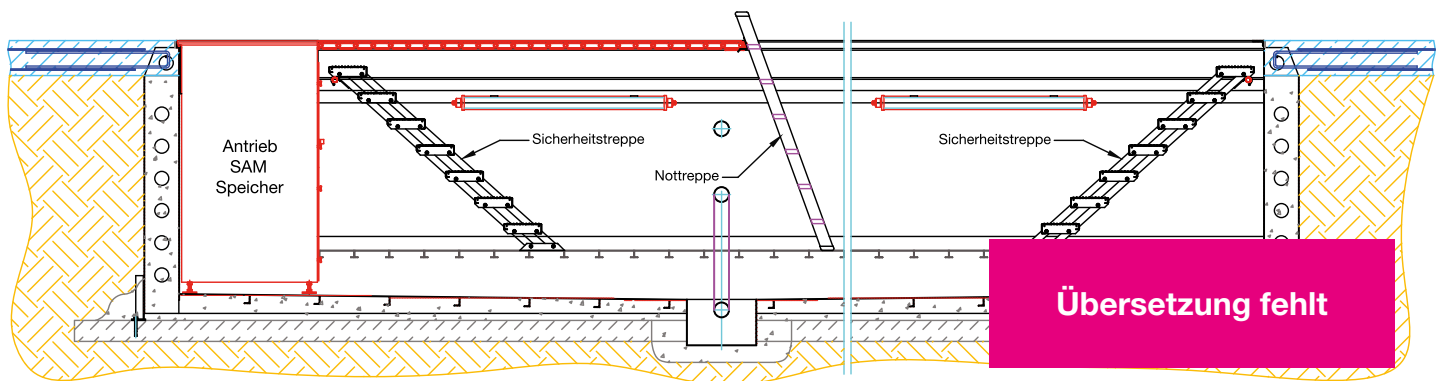
- System available as a storage variant
- Aluminium design
- Non-slip surface
- Stainless steel chain elements

We have the solution to every challenge. Let one of our specialists offer you individual advice on your project.

Technical description

Axle load:	1.5 t
Traffic load:	in accordance with SLW 60, DIN EN 1991-1-1:2010-12, DIN EN 1991-1-1 /NA:2010-12, DIN Technical Report 101:2009-03 and DIN 4085 Supplement 1:2011-12
Length:	according to customer requirements
Inside width:	1.02 m in clearance
Working width:	1.62 m in clearance
Standing height:	according to customer requirements





Balzer GmbH & Co. KG

Zeissweg 9

87700 Memmingen

Phone: +49 (0)8331 99041-0

info@balzer-mm.de

Prefabricated assembly pits

Umweltgrube®

Sliding covers

Rail vehicle pits

www.balzer-mm.de



Sliding cover for concrete pit

Type SAM 102 B storage

Type SAL 102 B storage

- Optionally fully traversable with 13 t axle load or light version with 1.5 t axle load
- Delivery and assembly of suitable pit frames
- Individual CAD planning of the sliding covers for your existing or new assembly pits
- Sliding cover flush with the hall floor
- Control via operating element installed in the hall area
- Work on various different levels possible
- The sliding cover complies with the requirements of DGUV 109
- Optimum safety for your employees
- TÜV type-tested and certified system
- ISO 9001:2015 certified production facility
- DIN EN 1090 certified production facility
- Various patents have been granted
- Top product quality
- MADE in Germany

The benefit for you: Optimum accident prevention

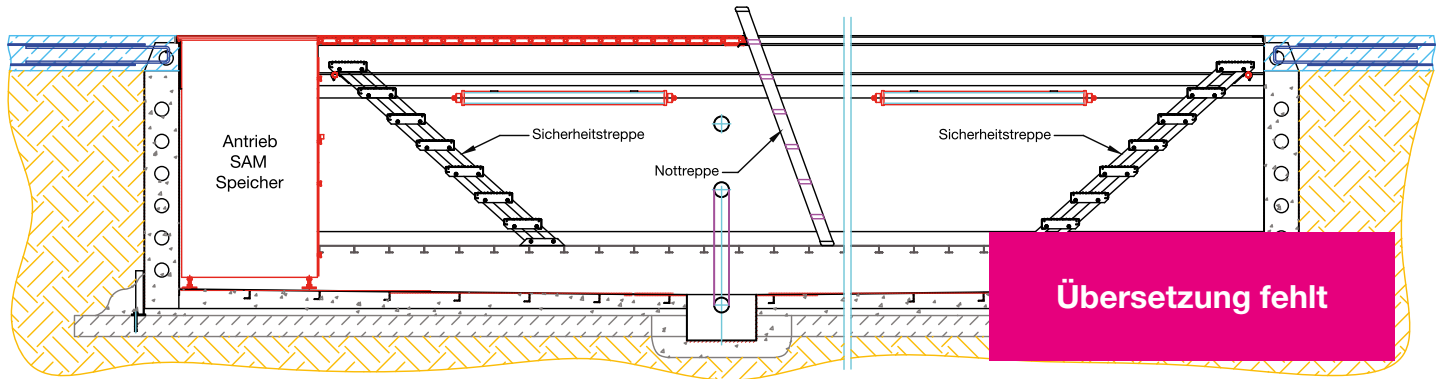
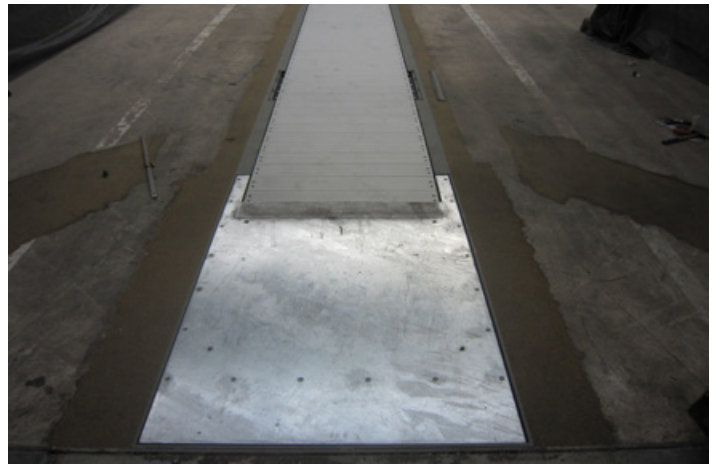
- System available as a storage variant
- Suitable pit frames can be supplied
- Aluminium or hot-dip galvanised steel design
- The aluminium version has a non-slip surface
- V2A bush conveyor chain with self-lubricating Permaglide bushes

Technical description

Axle load:	13 t or 1.5 t
Traffic load:	in accordance with SLW 60, DIN EN 1991-1-1:2010-12, DIN EN 1991-1-1 /NA:2010-12, DIN Technical Report 101:2009-03 and DIN 4085 Supplement 1:2011-12
Length:	according to customer requirements
Inside width:	1.02 m in clearance
Working width:	1.62 m in clearance
Standing height:	according to customer requirements



We have the solution to every challenge. Let one of our specialists offer you individual advice on your project.



Balzer GmbH & Co. KG

Zeissweg 9
87700 Memmingen
Phone: +49 (0)8331 99041-0
info@balzer-mm.de

Prefabricated assembly pits
Umweltgrube®
Sliding covers
Rail vehicle pits

www.balzer-mm.de