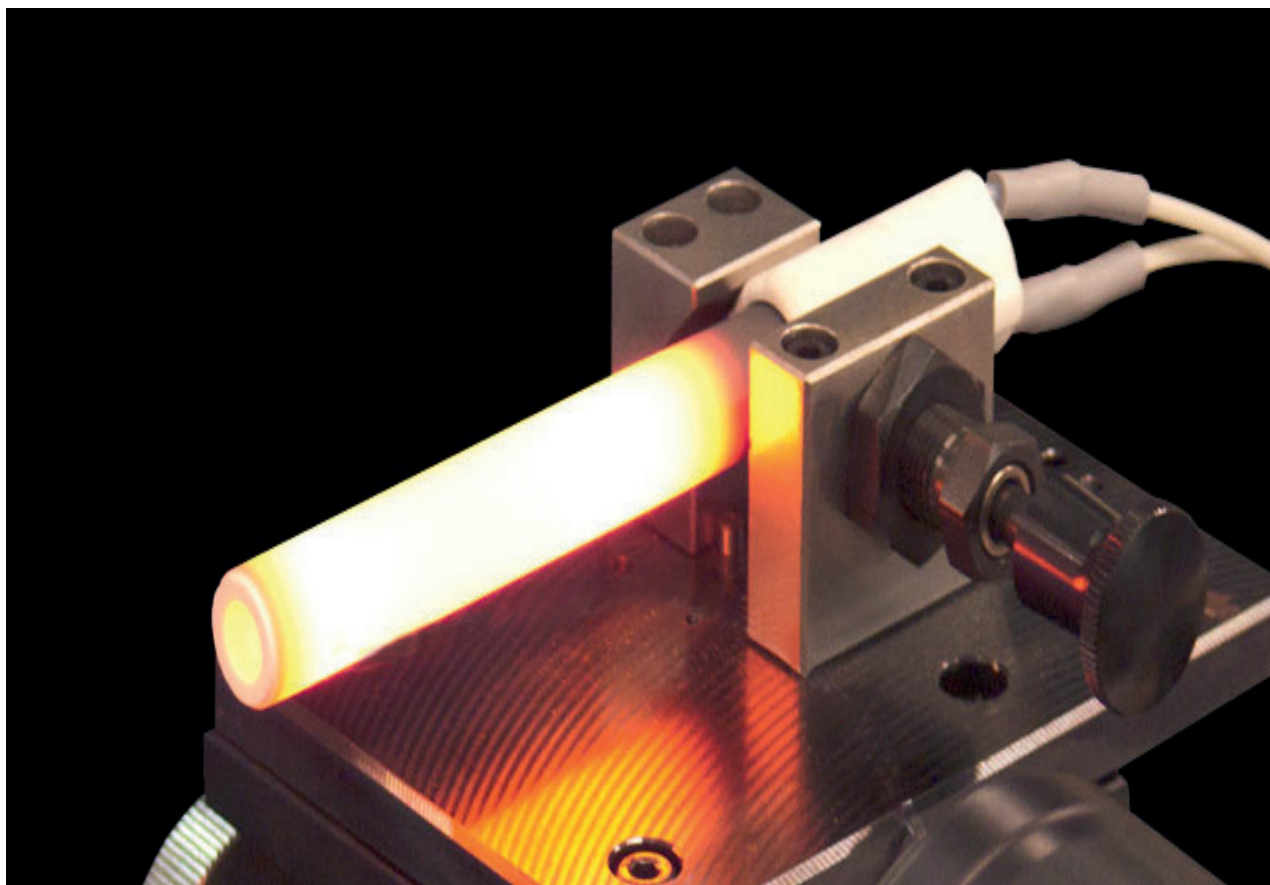
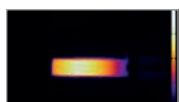


Fuji Kogyo Corporation

Japanese quality | Made to last
Fast lighting | Reduce emissions

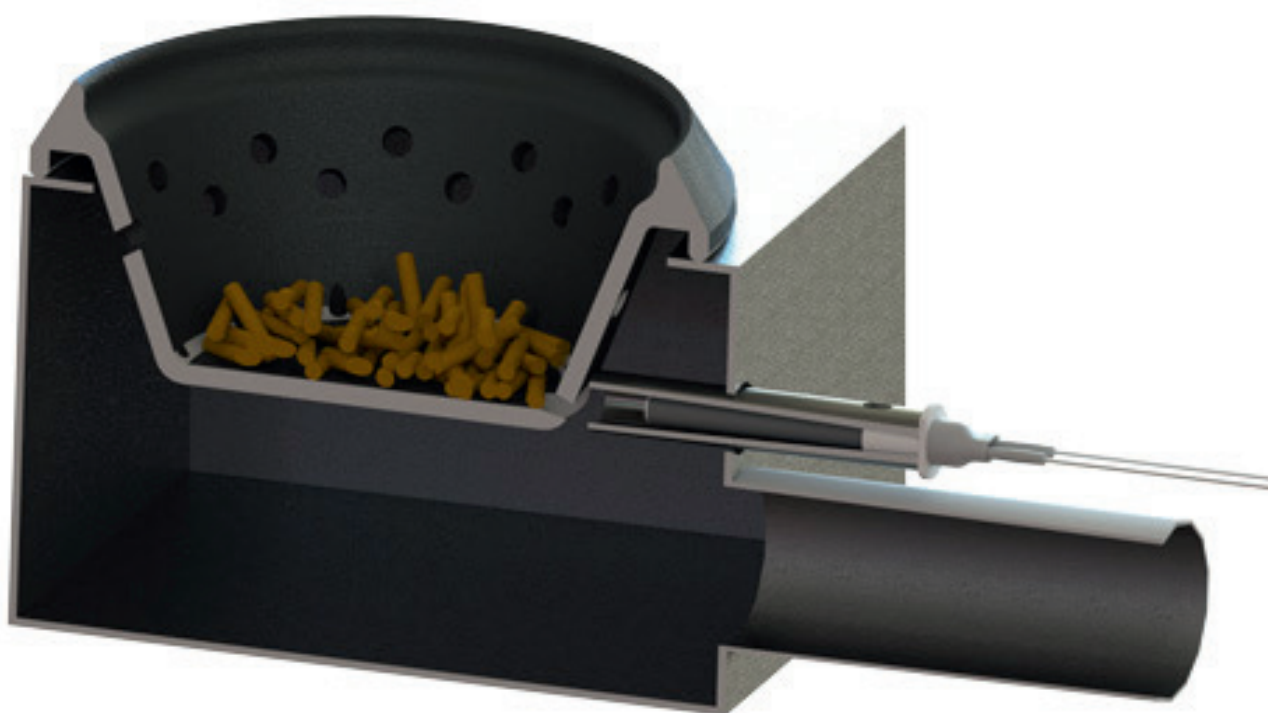


CERAMIC IGNITER

PSX-Series

A revolutionary way to ignite biomass

Alumina ceramic high temperature igniter



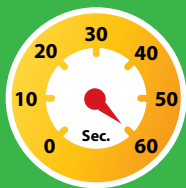
**A revolutionary way
to ignite biomass**



FKK Corporation

Eco solution

Fast lighting



Thanks to the powerful heating element, pellets ignite within 60 - 90 seconds. This lead to a significant reduction in fine dust and emissions.

Made to last

**100,000
cycles pass**

PSx alumina ceramic igniters are made to last and reduce maintenance. This type of igniter have passed 100,000 cycles tests.

Reduce emission



Thanks to high surface temperature of 950~1000°C, combustion residues are completely burned off.

Technology

Since 80's

FKK Corporation has decades of tradition and experience of producing alumina tube igniters. The origin comes from Japan, where the manufacture of heating elements for heating industry began in the 80s.

Japan quality



All PSx alumina ceramic igniters are 100% made in Japan with components from Japanese manufacturers. Besides, the PSx igniters are fully complying with TUV Rheinland company's testing.

Wide range

30+ models

From the PSx series are more than 30 different models are available. On top of that: Ready-to-plug solutions are available.

Biomass ceramic igniters

for igniting pellets, wood chips and other biomass

50s bis 1000°C

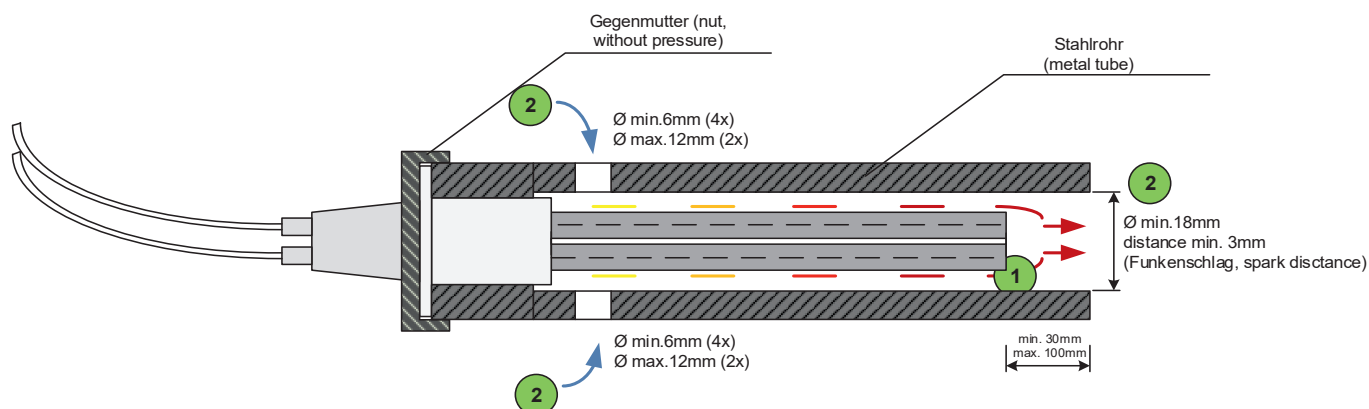
Non aging

Made in Japan

Fuji Kogyo ceramic igniters: A step forward for biomass heating devices

Many years of experience and Japanese quality characterize the ceramic igniter from Fuji Kogyo Corporation. Through close cooperation with selected customers, tailor-made solutions for biomass heating devices have been developed. All our range can be customized to fit perfectly in your appliance.

Recommended installation



Vermeidung mechanischer Belastung im Brennraum!

Der Glühzünder darf NICHT direkt in Kontakt mit Brennmaterial bzw. Asche sein!!

Not any mechanic influence, not allowed to put ash or heating material on the igniter!!

Vor dem Start des Glühzünders ist es empfehlenswert eine Luftspülung vorzunehmen um Aschereste etc. zu entfernen. Es ist erforderlich während des Betriebes den Glühzünder mit Außenluft zu Spülen um ein Überhitzen zu vermeiden.

First put in fresh air, than you start the ceramic igniter.

Don't stop the air! (temperature stress)

Technology benefits

- Lower energy consumption compared to conventional heater
- Fast ignition of 60~90 seconds
- High lifetime: tested to 100,000 cycles
- Easy to install and retrofit
- Fits any steel tube with an inner diameter of $\geq 18\text{mm}$
- 1000°C at steady-state temperature
- Cannot overheat even with blower failure
- Available in 100/120/220/240 V
- Fully electrically insulated with no exposed electric contacts
- UL/CE certified wiring (200 to 500°C heat resistant wire)
- Impervious to oxidation and corrosion
- Ignite wood pellet, wood chips, split logs, straw and other biomass
- Comply with RoHS, REACH regulation on hazardous substances

Systems

- Wood pellet stove
- Wood pellet boiler
- Wood pellet burner
- Wood chips burner
- Straw burner
- Other biomass burner

Certification

- TUV Rheinland - EN 60335
- TUV Rheinland - RoHS



A revolutionary way to ignite biomass

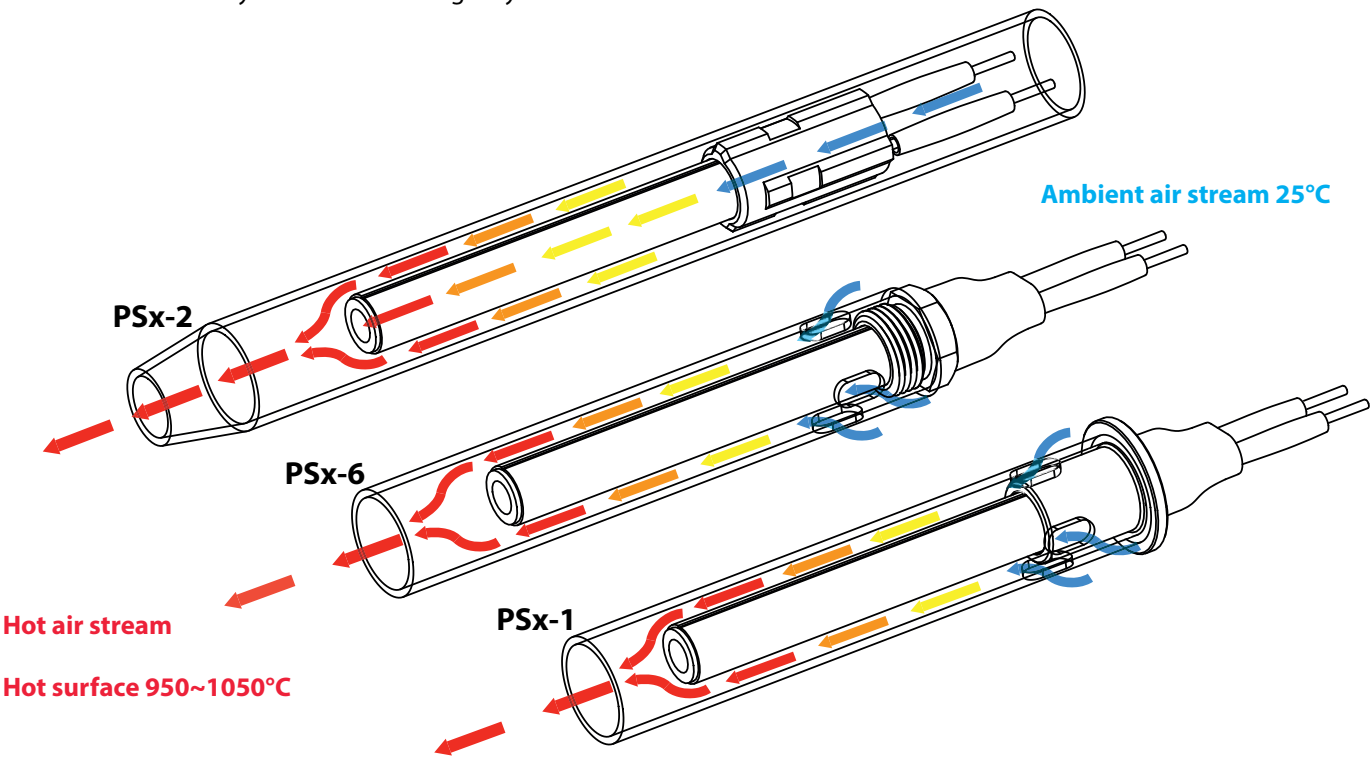
PSx series igniters revolutionize biomass ignition process. FKK developed two different types to fit in every appliances.

Tubular radiant structure type (Airflow system: PSx-2 /PSx-7)

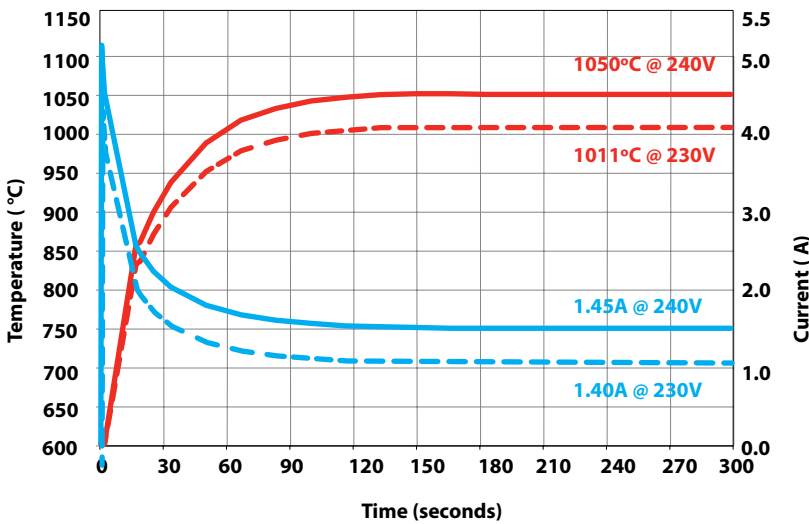
Ceramic igniters have a through hole in order to let an air stream through the heating element body. With this structure, the ignition performance can be increased by 1.4 times compared to metal cartridge heaters.

Hermetic radiant structure type (Circulationg air system: PSx-1 / PSx-6)

Ceramic igniters heat the ambient air in order to ignite the pellets indirectly. These models are easy to install into airtight systems.

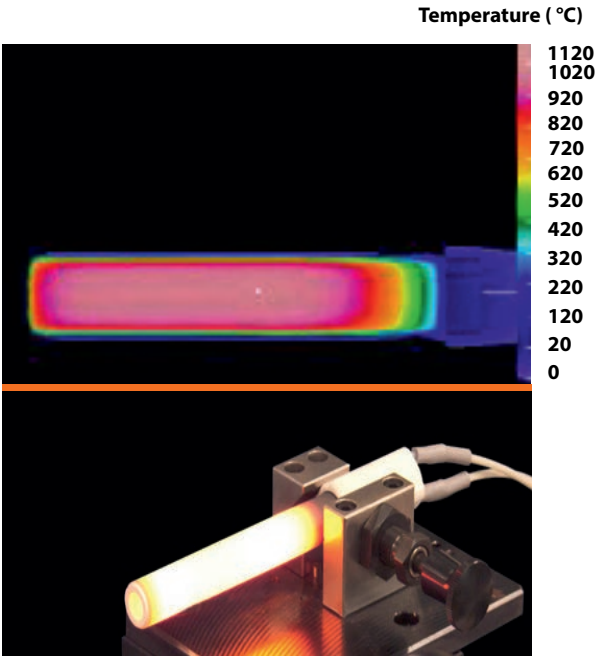


Rising surface temperature



Nominal resistance: 44.64Ω
Inrush current: 5.05A (@240V/50Hz)
Current: 1.45A (@240V/50Hz)

Heat distribution



PSx series igniters line up

A simple and efficient solution for biomass ignition

Application

Ceramic igniters suitable for ignition of biomass for stoves, boilers and burners

Features

- Tested to 100,000 ON/OFF cycles.
- Fast ignition (60~90 seconds)
- Wiring available in UL or CE certified version
- Customized solutions possible
- 240W and 300W type offered
- Available in 100V, 120V , 230V

Line up



PSx-1

26mm ceramic flange
Hermetic radiant type (circulating air)



PSx-2

17.7 mm ceramic flange
Tubular structure type (airflow)



PSx-3 / 4

No flange, perfect retrofit solution
Hermetic (circulating Air) or tubular (airflow) type available



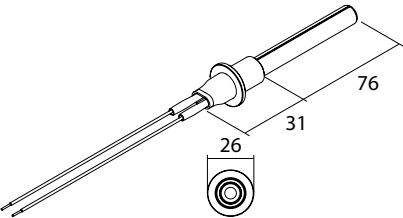
PSx-6 / 7

G3/8" threaded flange fixed on heater
Hermetic (circulating Air) or tubular (airflow) type available

Line up

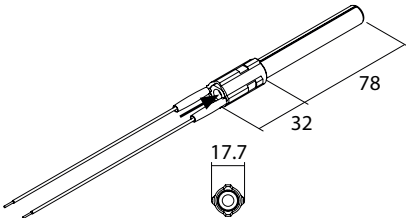
300W Class - Black (B) coating alumina heaters

PSx-1-240-B



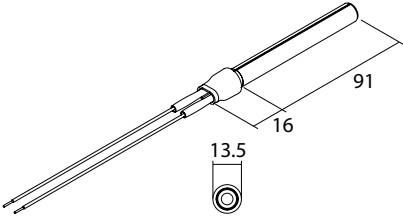
300W - 1000°C
Hermetic type

PSx-2-240-B



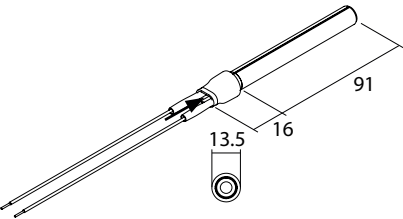
300W - 1000°C
Tubular type

PSx-3-240-B



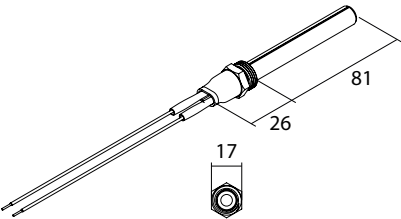
300W - 1000°C
Hermetic type

PSx-4-240-B



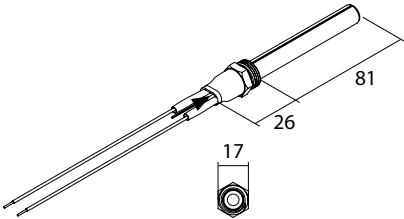
300W - 1000°C
Tubular type

PSx-6-240-B



300W - 1000°C
Hermetic type

PSx-7-240-B



300W - 1000°C
Tubular type

Versions are also in 120V and other cable lengths available!

Artikel No.	Description	Flange	Voltage (V)	Power (W)	Cabel length (mm)
116.81-0300	Ceramic Igniter 300W PSX-1-240-B	Ceramic Ø 26mm	230V	300W	350mm
116.82-0300	Ceramic Igniter 300W PSX-2-240-B	Ceramic Ø 17,7mm	230V	300W	
116.86-0300	Ceramic Igniter 300W PSX-6-240-B	G3/8"- 17mm	230V	300W	*All lengths available
116.87-0300	Ceramic Igniter 300W PSX-7-240-B	G3/8"- 17mm	230V	300W	

Your benefit:
ready-to-plug solutions are available!





www.hs-sensortechnik.at

Distributor

Jagern 62
4761 Enzenkirchen
Austria

TEL +43(0)77-62-43-705-0
FAX +43(0)77-62-43-705-50
office@hs-sensortechnik.at

Fuji Kogyo Corporation

www.plug.fkk-corporation.com

Production

11 Tsutsumisoto-cho Kisshoin
Minami-ku, 601-8399 Kyoto,
Japan

TEL +81(0)75-314-8760
FAX +81(0)75-314-4167
international@fkk-corporation.com

