



Electric additional heating
and domestic electric boilers



heating with electricity

MANY AREAS OF APPLICATION

Electric heating makes many people think of the electric boilers that were so popular not that long ago. Electricity was much cheaper then than it is now.

Today, waterborne electric heating is often used as additional heating when a heat pump is not enough, or as heating in garages and extensions. In such cases it is often used as waterborne underfloor heating.

DO YOU NEED TO REPLACE YOUR OLD ELECTRIC BOILER?

You should take a closer look at the **Värmebaronen Elomax** which allows you to connect solar panels. Then you have free heating and hot water for six months of the year.

Elomax can also be connected to a heat pump and then functions as the inner unit of the heat pump.

ADVANTAGES OF ELECTRIC HEATING

- SIMPLE INSTALLATION
- MANY AREAS OF APPLICATION
- LOW INSTALLATION COST
- EASY TO USE
- PERFECT FOR UNDERFLOOR HEATING
- SUITABLE FOR EXTENSIONS
- A FLEXIBLE SOLUTION WHEN YOUR HOUSE'S ORDINARY HEAT SOURCE IS NOT ENOUGH IN THE WINTER
- CAN OFTEN BE INSTALLED IN AN EXISTING BOILER

efficient solutions for chilly homeowners

WIDE RANGE

Värmebaronen has a wide range of electric heating products. Whatever you are looking for, you can find it with us. We can also tailor a solution to your requirements.

- ELOMIN – a traditional electric boiler that saves money
- THERMO FLOW NG – an electric boiler without a heater
- MP – versatile mini boilers
- ELECTRIC CARTRIDGES – a number of models
- IMMERSION HEATERS – a number of models

PERSONAL SERVICE AT ALL TIMES

To be able to help you quickly with the right information, we need to know a bit about your current heating system and your requirements.

Contact our heating consultants and we can help you consider various solutions.

When we have agreed on the best way to heat your home, we help you contact a professional installation engineer in your area. This is what we need to know:

- The size of your house
- Your current heating system
- The age of the system
- Where you live

www.varmebaronen.se

Tel. +46 44 22 63 20



HOW DOES IT WORK?

The electric heat source heats water which is then pumped into a radiator or underfloor heating system.



VISIT OUR WEBSITE

You can find more information on our products at www.varmebaronen.se.



Elomin III

one of the most
popular electric
boilers in Sweden

Ready connected to save you money

Elomin III CU is delivered with the necessary pipes and cables fitted, which saves you money on installation.

Elomin III is a modern, compact electric boiler. Problem-free, with easy maintenance and high heating comfort. It is cheap to buy and install, making it a good choice. The Elomin boiler has been developed over many years and thousands have been sold. This is your guarantee for a safe purchase.

CLIMATE-CONTROLLED HEATING

Climate-controlled heating optimises heating costs and produces maximum comfort. The boiler is always used as efficiently as possible. Exactly the right amount of heat is always released into your home. This saves money. This is extremely important in the spring and autumn, when the temperature at night is often below zero and during the day up to 15 degrees.

LOAD GUARD AND SUMMER OPERATION

This function gradually limits the boiler's output when a device such as a washing machine, tumble dryer or cooker is being used at the same time as the boiler. Then you can have a lower main fuse, which means a lower tariff. When no heating is required, the heating unit is switched off automatically. Only the hot water heater operates. The circulation pump starts at regular intervals during the summer months so that it does not seize up in the autumn. The boiler's controller only needs to be adjusted during installation. After this, it looks after itself.

FUNCTION FOR HEATING IN THE SUMMER

Adjustable maximum and minimum temperatures for the elements mean that individual rooms or basements can be heated even if the rest of the house does not need to be heated, for example in the summer. This is a unique function which should really be a matter of course, but which Elomin III was the only boiler to have for a long time.

WITH OR WITHOUT A WATER HEATER

Elomin III is available in two versions. The CU 200 is a complete electric boiler with a 200-litre hot water heater. The UB version has no heater and can be combined with all modular heaters on the market with dimensions 600x600 mm.

COMPLETE DELIVERY SAVES MONEY

Elomin III is delivered complete with climate-controlled automatic heating control, load guard, expansion tank, circulation pump and much more besides. If you choose a different make, you need a miniature circuit breaker between the boiler and the heater. This increases the cost of installation.



Elomin III UB



The hot water heater in Elomin III CU 200 is heated with an external heating mat. The mat is non-sensitive to lime and other deposits to which a standard immersion heater is exposed. This is an advantageous way of heating water which gives Elomin III a head start.



MP 4 & MP 6 mini boilers

VERSATILE

The MP boilers have been very popular ever since they were introduced. They are now available in an updated version. Many people use them for underfloor heating in extensions and on patios. Others have found an easy way to heat their holiday home or a freestanding garage.

MP is also used for site huts and in holiday villages and camping sites. The boiler is extremely versatile.

SEPARATE SYSTEMS AN ADVANTAGE

For underfloor heating, it is an advantage to have separate systems for heating and hot water. The temperature of the hot water then does not depend on the temperature in the underfloor heating system (normally 25-40 °C).

COMPACT

MP 4 and MP 6 have small dimensions and a discreet cover. They are therefore easy to position.

COMPLETE

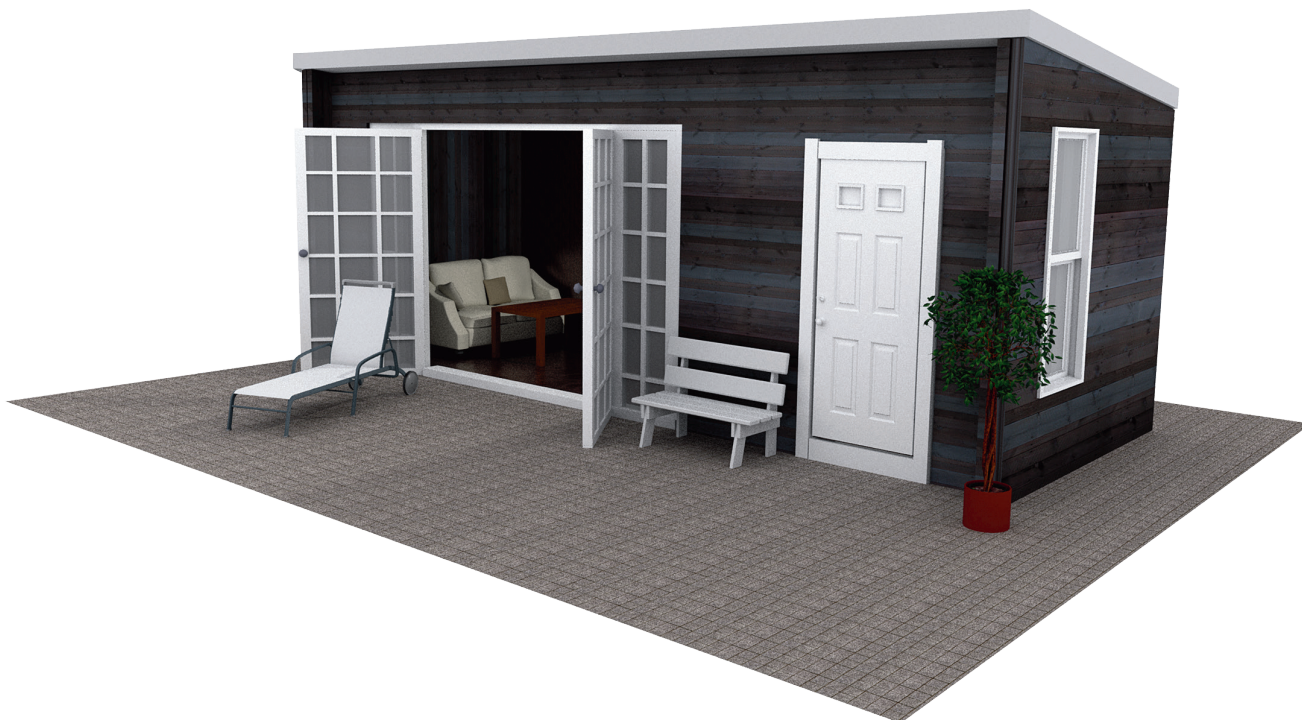
The MP boiler is delivered complete. Only water and power need to be connected. Then they are ready for use.

EFFICIENT

The MP boiler's power (4.5 or 6 kW) roughly corresponds to the heat required for up to 80-150 m² of living space, depending on insulation and ventilation. The boilers are controlled by a built-in thermostat.

ACCESSORIES

The outdoor temperature compensator UTK 2000 ensures that the temperature outdoors controls the boiler. A room thermostat is also available as an accessory.



Perfect for holiday homes, extensions, storage rooms, garage etc. up to 150 sqm.

The MP SERIES IS VERY POPULAR

The MP 4 and MP 6 boilers have a number of applications. They are used for underfloor heating in extensions and guest houses, others have found an easy way to warm up the holiday home or a detached garage. MP is also used for work sheds, in cottage villages and at camp sites. The area of use for the boilers are countless.

MP 4

Switchable:
1,5 kW
2,25 kW
3 kW
4,5 kW

MP 6

Switchable:
3 kW
6 kW

SEPARATE SYSTEM IS A BENEFIT

For floor heating, it is an advantage with separate systems for heating and hot fresh water. The temperature of the hot fresh water is then not dependent on the temperature in the under-floor heating system (normally 25-40°C).



Thermo Flow NG boiler

CAN BE USED FOR MOST TYPES OF HEATING

Thermo Flow NG can be used for all sorts of heating. One standard area of application is waterborne underfloor heating. Thermo Flow NG has no built-in heater or heat exchanger for hot water.

DESCRIPTION

Thermo Flow NG is a wall-mounted electric boiler with an output of 11 kW. Just like the Elomin III, the boiler is climate-controlled, which means that the temperature outdoors controls how much heat the boiler releases. When no heat is required, the boiler is automatically switched off. The circulation pump starts at regular intervals during the summer months so that it does not seize up in the autumn. Thermo Flow NG has frost protection and a room thermostat is available as an accessory. A pressure-controlled bypass valve extends the service life of the boiler and ensures reliable operation.

COMPACT DIMENSIONS

Thermo Flow NG has small dimensions and is therefore easy to position. Despite its small size, the boiler is able to heat larger areas than you might think.

COMPLETE

Thermo Flow NG is delivered complete. Only water and power need to be connected. Then the system is ready for use.

LOAD GUARD

A seven-stage load guard protects the house's main fuses. This function temporarily limits the boiler's output when a device such as a washing machine, tumble dryer or cooker is being used at the same time as the boiler.



Värmebaronen is one of Sweden's premier heating companies. Our reliable electric boilers are well proven with documented long life.

1. Electric automatic control system easily accessible under the cover.

2. Automatic control system, standard: Thermostat, overheating protection, operating indication, built-in switch and time delay.

3. Cables are fully connected, which simplifies installation and reduces its cost.

4. A low volume of water and a well-insulated tank mean low heat loss.

5. A load guard protects the main fuses (only EK 15 E).

Compact dimensions.



Electric cartridges

If your boiler is not prepared for an immersion heater, you can connect an electric cartridge instead.

An electric cartridge is essentially an immersion heater installed in a water tank, or an electric boiler without a hot water heater.

An electric cartridge is easy to connect to the boiler via an expansion pipe and a docking outlet or drain cock. To ensure water circulation, a circulation pump must be installed.

K-060

K-060 is an insulated tank for immersion heaters. All immersion heaters with R50 connection and maximum insertion length 420 mm can be installed in the tank, i.e. from 1.5 kW to 9 kW. The tank is also available in a stainless version, K-060 R.

EK 13

13 kW divided into 3 stages, controlled by two mechanical thermostats and a main switch. Used as a supplement to an existing boiler or hot water heater.

EK 15 E

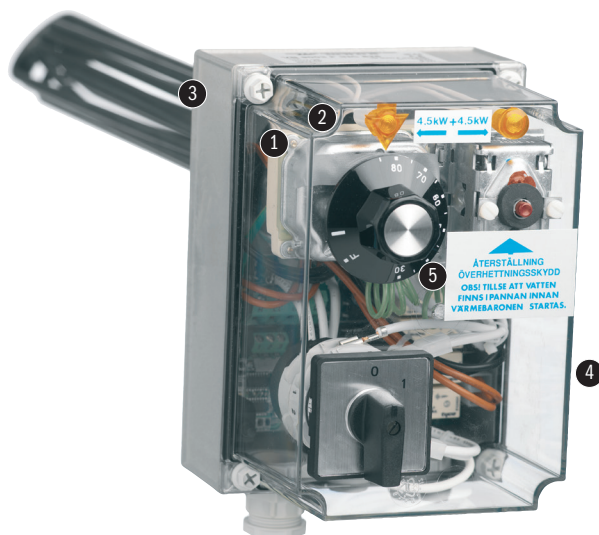
15 kW divided into 7 stages, controlled by an electronic thermostat. Can easily be climate-controlled using UTK-E. Can also be controlled by a heat pump or other external 0-10 V signal. EK 15 E has a 7-stage load guard.

26 kW - 1.5 MW ELECTRIC BOILERS

If more than 15 kW is required, there is a wide range of electric boilers. They are described in a separate catalogue that can be ordered from Värmebaronen.



VB 9003 F immersion heater installed in K-060.



1. Internal cables are fully connected, which simplifies installation and reduces its cost.

2. Electric automatic control system is easily accessible.

3. Stainless SIS 14 2348 or copper electric elements can handle most water qualities. If the tank material contains copper, you need to order our copper immersion heater instead. The same applies if the water is brackish or has a high chloride content.

4. Sensible accessories, for example a load guard to protect the main fuses.

5. Automatic control system, standard:

- Thermostat in one or more stages.
- Overheating protection (manual reset).
- Operating indication.
- Built-in main switch.

Easy to position thanks to its dimensions.

Immersion heaters

Economical and reliable – suitable for most boilers and accumulators.

An immersion heater is a convenient supplement if you fire with wood, for example. When the fire has gone out and you have neither the time nor the desire to light it again, you can let an immersion heater take over the heating automatically. An immersion heater is also a useful backup if the burner goes wrong or you run out of oil/pellets.

POWER REQUIRED

If immersion heaters are to meet all your heating requirements, the power should be between 6 and 12 kW. Reckon with 70 W/m² with a ceiling height of 2.5 metres. If you only heat hot water during the summer months, you can make do with 1.5 to 6 kW.

VB 1510 - VB 6010 (L)*

These immersion heaters are suitable if you need no more than 6 kW or if you want to supplement an F model immersion heater to achieve more power.

VB 6002 - VB 9002

The advantage of VB 6002-VB 9002 is that they load the phases evenly in two stages. VB 9002 is only for industrial use (no time delay).

VB 6003 F - VB 9003 F (L)*

These F models are fitted with time delay on full or half power. They can also be fitted with a load guard, VBB 12 TX, or outdoor temperature compensator, UTK 2000.

** Tanks with long immersion heater sleeves require special immersion heaters. These are designated with an L after the product name. Available in models VB 6010 L and 9003 FL.*

Accessories



Load guard VBB 12 TX (RSK 621 09 00)

VBB 12 TX monitors the load on the main fuses and disconnects the power from the immersion heater or electric cartridge if necessary. VBB 12 TX is available in two versions. Current transformers are included.



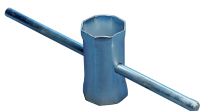
Load guard and time delay VBB 222 (RSK 621 09 09)

VBB 222 has a time delay function after the power is cut and a built-in load guard for 16 to 35 A main fuses. Current transformers are included with the delivery. VBB 222 controls in two stages and has two power relays that cope with 6 kW each. Option for external blocking. Suitable for all immersion heaters, VB **10, VB **20.



Extender FL 84 (RSK 621 11 50)

Extender FL 84 moves the automatic control cabinet out from the immersion heater. When the immersion heaters are fitted in accumulator tanks, it may be necessary to move the automatic control cabinet out so that it is not surrounded by the insulation. Excess heat in the automatic control cabinet results in increased wear on the electrical components. Extended replacement cables are included with the delivery. Suitable for all 2-inch immersion heaters.



Tool BBH 83 (RSK 621 09 42/43)

With the socket spanner, it is easy to fit and remove immersion heaters without damaging the head of the immersion heater. Also available extended to 500 mm. Suitable for all 2-inch immersion heaters.



Tank K-060 (RSK 621 09 34/35)

K-060 is an insulated tank for immersion heaters with R50 connection. Immersion heaters with a maximum power of 9 kW and maximum insertion length of 420 mm can be connected in the tank. The tank and the immersion heater then work together as an electric cartridge. K-060 is also available in a stainless version, K-060 R.



UTK E (RSK 621 11 06)

UTK E controls the flow temperature according to the outdoor temperature without any shunt unit. Suitable for EK 15 E, EP 26 E and EP 42 E.



UTK 2000 (RSK 611 62 78)

UTK 2000 controls the flow temperature according to the outdoor temperature without any shunt unit. Suitable for all immersion heaters of F model and MP 4/MP 6.



FUSE SET (RSK 611 62 86)

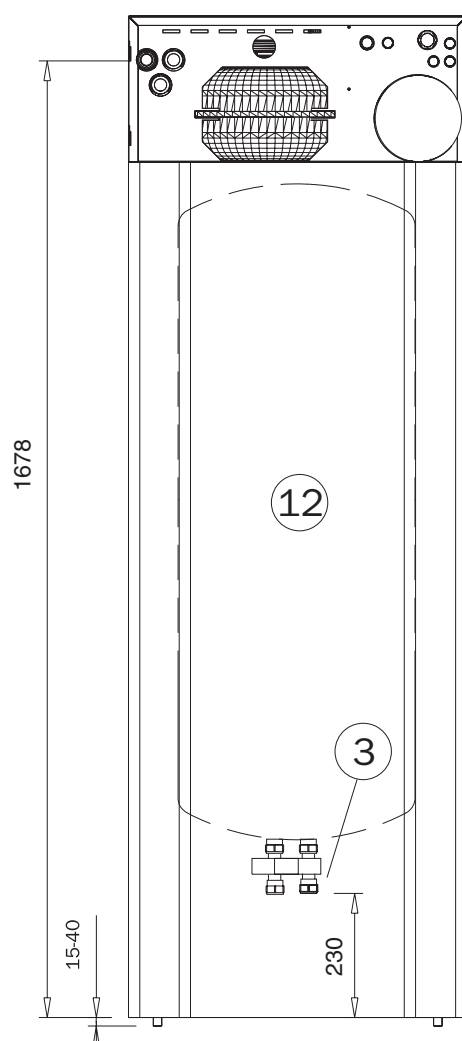
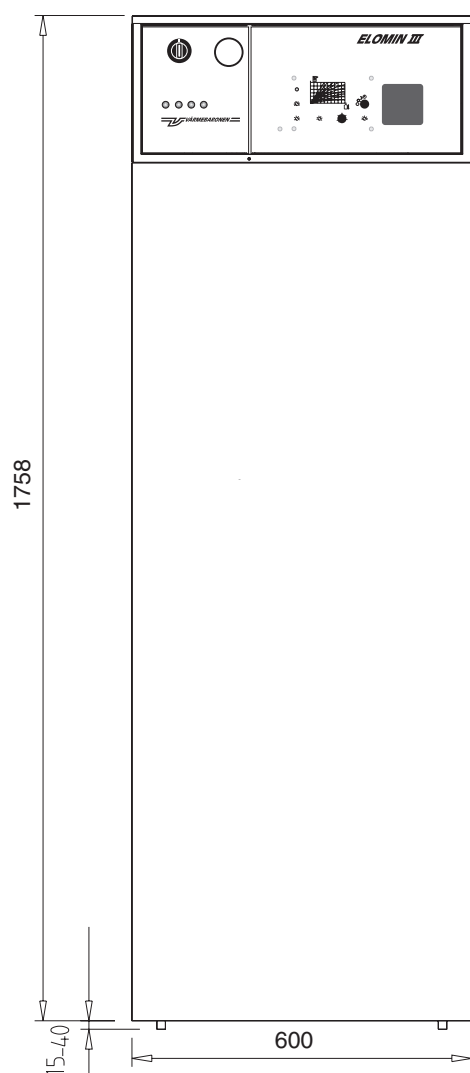
Fuse set for Elomin.



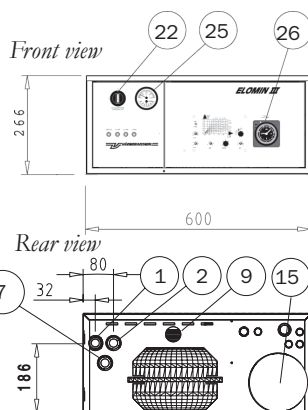
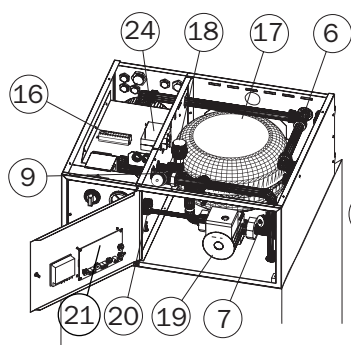
ALARM SET

External alarm indication EK 15 E.

Elomin III



Elomin III component locations

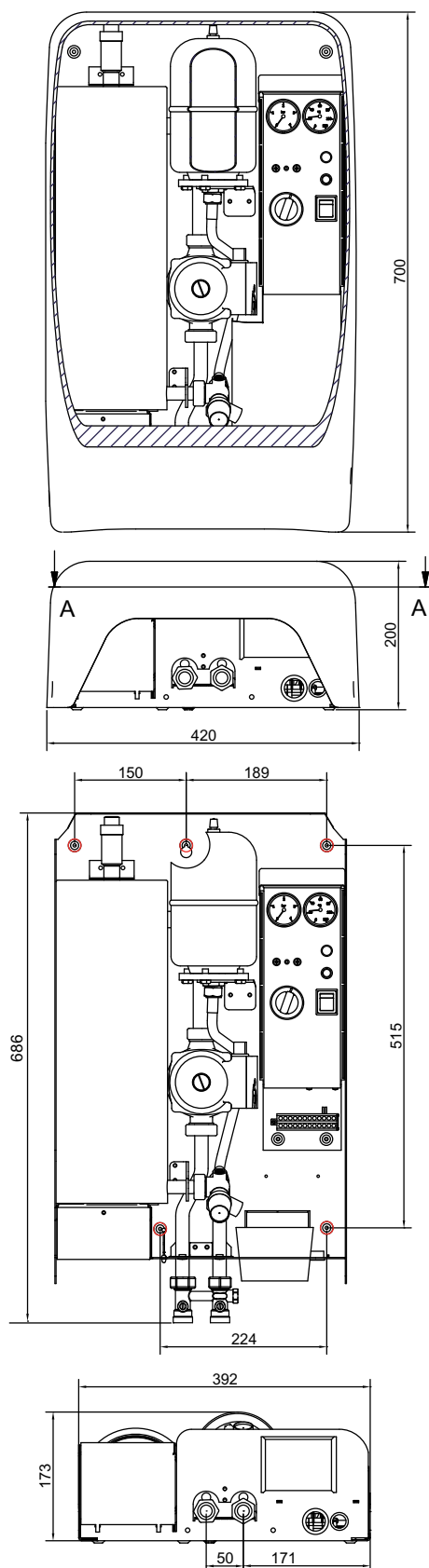


1. Flow clamping ring coupling Ø22 mm
 2. Return clamping ring coupling Ø22 mm
 3. Hot water coupling with connection for incoming cold water, hot service water, safety valve, mixing control valve and filling and drain valve
 6. Overflow valve
 7. Filling valve, radiator circuit, Ø15 mm
 9. Safety valve, radiator circuit
 12. Hot water heater
 15. Electric cartridge for radiator circuit
 16. Terminal block
 17. Expansion tank, 12 l
 18. Automatic float vent
 19. Circulation pump
 20. Max. thermostat
 21. Outdoor temperature compensator
 22. Main switch
 25. Temperature and pressure gauge
 26. Timer
- SCOPE OF SUPPLY**
- Outdoor temperature sensor
 - Current transformers
- ACCESSORIES**
- 24. Miniature circuit breaker (if a different hot water heater is chosen)
 - Room thermostat Art no.: 12 00 80

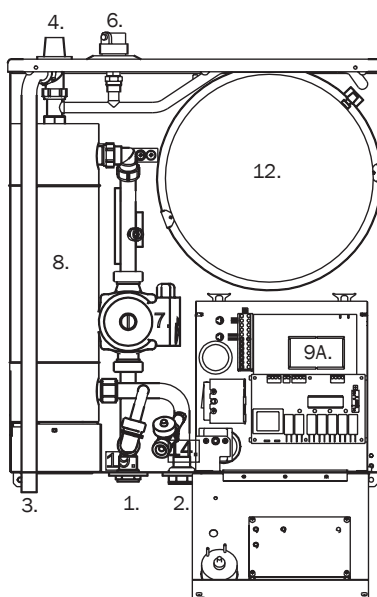
Type/RSK no.	Electrical power (kW)		Volume (litre)			Pressure (bar)		Enclosure class	Main dimensions (mm)			Weight (kg)
	Boiler	Hot water heater	Boiler	Hot water heater	Exp. tank	Boiler	Hot water heater		Height	Breadth	Depth	
Elomin III UB 611 62 85	13.1	---	3	---	12	2.5	---	IP 21	266	600	610	29.5
Elomin III CU 200 611 62 84	13.1	1.5/3	3	200	12	2.5	10	IP 21	1780	600	610	120

* incl. upper cover

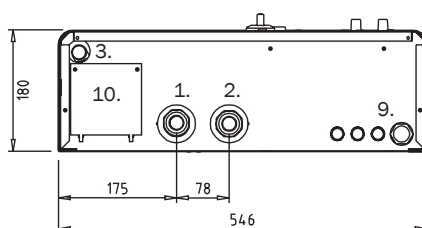
MP4 • MP 6 - Thermo Flow NG



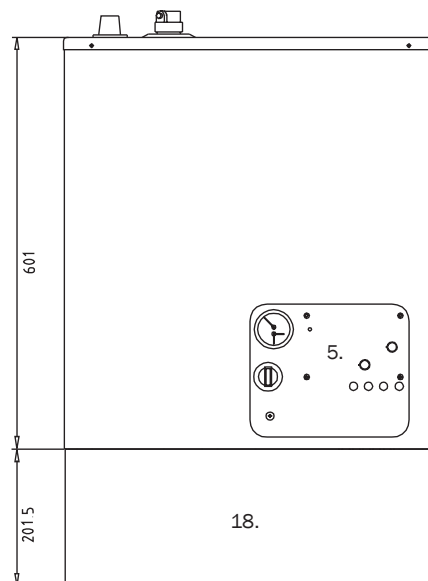
MP 4 • MP 6



Bottom view



Thermo Flow NG



1. Flow R25 int.
2. Return R25 int.
3. Blow-off pipe, safety valve, Cu Ø22 mm.
4. Safety valve, 2.5 bar.
5. Panel with switches and indication, outdoor compensation.
6. Automatic vent valve.
7. Circulation pump.

8. Electric cartridge.
9. Cable openings.
10. Service hatch, immersion heater.
12. Expansion tank.
14. Filling and drain valve, R25 ext.
18. Cover to conceal pipe connections.
19. Bypass valve.



SCOPE OF SUPPLY

- Outdoor temperature sensor
- Current transformers for load guard

ACCESSORY

- Room thermostat Art no.: 12 00 80

Boiler	RSK no.	Electrical power (kW)	Volume (litre)		Pressure (bar)	Enclosure class	Temperature range (°C)	Main dimensions (mm)			Weight (kg)
			Boiler	Exp. tank				Height	Width	Depth	
Thermo Flow NG	611 62 70	11	2	12	2.5	IP 21	0-60* *	601*	546	180	28
MP 4	611 62 66	4.5	5	2	2.5	IP 21	0-60	700	420	300	17
MP 6	620 37 86	6	5	2	2,5	IP X1	10-60	700	420	200	17

* incl. cover to conceal pipe connections 802 mm

** delivery setting, max.=90°C

Immersion heaters

Immersion heater.	RSK no.	Power (kW)	Length (mm)*	Encl. class	Conn. diff.**	Temp. range (°C)	Main switch	Time*** delay	Load guard
VB 1510	621 08 86	1.5	295	IP 21	7	25-85	Yes	Accessory	Accessory (VBB 222)
VB 2210	621 08 87	2.25	295	IP 21	7	25-85	Yes	Accessory	Accessory (VBB 222)
VB 3010	621 07 02	3	295	IP 21	7	25-85	Yes	Accessory	Accessory (VBB 222)
VB 4510	621 07 10	4.5	390	IP 21	7	25-85	Yes	Accessory	Accessory (VBB 222)
VB 6010	621 07 28	6	400	IP 21	7	25-85	Yes	Accessory	Accessory (VBB 222)
VB 6010 L	621 07 27	6	400	IP 21	7	25-85	Yes	Accessory	Accessory (VBB 222)
VB 6002	621 07 51	6(3+3)	350	IP 21	5	30-85	Yes	Accessory	Accessory (VBB 222)
VB 9002	621 08 56	9(4.5+4.5)	400	IP 21	5	30-85	Yes		
VB 6003 F	621 07 78	6(3+3)	350	IP 21	5	30-85	Yes	Yes	Accessory (VBB 12 TX)
VB 9003 F	621 08 57	9(4.5+4.5)	400	IP 21	5	30-85	Yes	Yes	Accessory (VBB 12 TX)
VB 9003 FL	621 07 35	9(4.5+4.5)	480	IP 21	5	30-85	Yes	Yes	Accessory (VBB 12 TX)

* The insertion length of the immersion heater.

** Connection difference = temperature difference in °C between thermostat being switched on and off.

*** Required with a total power greater than 6 kW.

**** Other temperature ranges also available.

All immersion heaters are available with higher IP class.

Electric cartridges

Electric cartridge	RSK no.	Power (kW)	Weight (kg)	Volume (litre)	Pressure (bar)	Encl. class	Conn. diff.*	Temp. range (°C)	Main switch	Time delay	Load guard
K-060	621 09 34	1.5-9***	5.7	2.6	1.5**						
K-060 Stainless	621 09 35	1.5-9***	5.7	2.6	10						
EK 13	621 10 08	13 (6+4+3)	12.8	4.5	3	IP 21	5	30-85	Yes	Yes	Accessory (VBB12 TX)
EK 15 E	621 10 11	14.7 (7x2.1)	12.8	4.5	3	IP 21	1°/stage	20-95	Yes	Yes	Yes
EP 26 E	623 00 00	26.2 (7x3.75)	50	17	4.0	IPx1	1°/stage	20-95	No	Yes	Yes
EP 27	623 00 35	27 (6x4.5)	50	17	4.0	IP 24	5	30-85	No	Yes	Accessory

** Connection difference = temperature difference in °C between thermostat being switched on and off.

** Other pressure classes as ordered.

*** Tank K-060 is supplemented with immersion heater 1.5-9 kW.

Required with a total power greater than 6 kW.

D

K-060

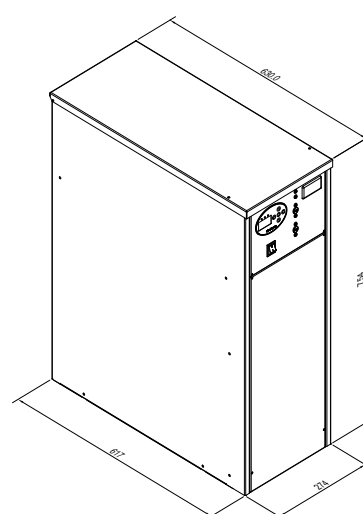
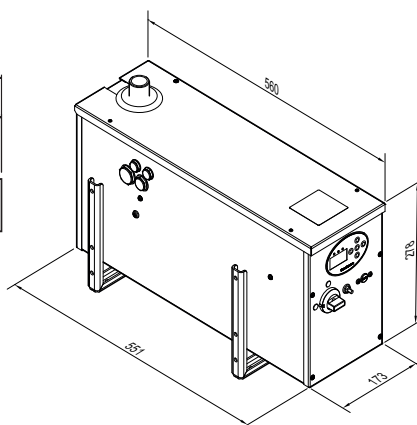
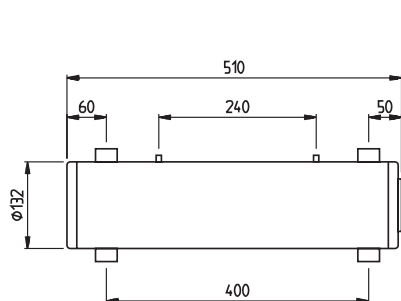
Connection R 25 ext.

EK 13, EK 15 E

Connection R 25 ext.

EP 26 E, EP 27

Connection R 32 ext.





Office and modern production plant in Österslöv, 10 km north of Kristianstad in Skåne

WE MANUFACTURE ALL PRODUCTS IN OUR OWN FACTORY IN SWEDEN.

At Värmebaronen, we believe it is important to have full control over the entire production chain from drawing to delivery. We also think it is important to protect Swedish jobs and the Swedish environment. Local products are important not only in food stores. At Värmebaronen, you can find pellet-fired, wood-fired and combination boilers. As well as pellet burners, electric boilers and additional heating for heat pumps. And now we make solar panels as well! You should also know that Värmebaronen will always give you personal service from our heating consultants. Please do not hesitate to give us a call!



ORDER MORE PRINTED MATERIAL

We have many more catalogues, folders and product sheets. Call us or visit www.varmebaronen.se to order.

- Wood firing at its simplest.
- Free heat from the sun. Solar panels
- Green pellet firing.
- Combine. Accumulator tanks
- Electric boilers for industry and properties
- Recommended retail price list
- Service catalogue, spare parts
- Printed material in English and German
- Product sheets and sign material
- DVD films on wood, pellets and installation

RETAILER:



Värmebaronen AB
 Arkelstorpsvägen 88
 SE-291 94 Kristianstad
 Tel. +46 44 22 63 20
 Fax +46 44 22 63 58
www.varmebaronen.se
www.varmebaronen.com
info@varmebaronen.se