

# VICTAULIC® INSTALLATION-READY™ TECHNOLOGY



UP TO 10 TIMES FASTER TO INSTALL  
THAN OTHER JOINING METHODS

Patented



# INSTALLATION-READY™

## TECHNOLOGY



In 1919, Victaulic® standard grooved end couplings set the bar for pipe joining efficiency. Today, *Victaulic Installation-Ready™* couplings are raising it to a whole new level.

*Victaulic Installation-Ready* couplings are the fastest and safest joining method available because they:

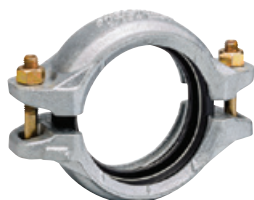
- install up to 10 times faster than welded joints
- install up to 6 times faster than flanged joints
- feature no loose parts during installation

### COUPLINGS FEATURING PATENTED INSTALLATION-READY™ TECHNOLOGY



**STYLE 009N**

The Style 009N FireLockEZ™ rigid coupling for fire protection systems.



**STYLE E497**

The Style E497 StrengThin™ 100 rigid coupling for thin wall stainless steel piping systems.



**STYLE 107N**

The Style 107N *QuickVic* rigid coupling for joining carbon steel and stainless steel piping systems.



**STYLE 177N**

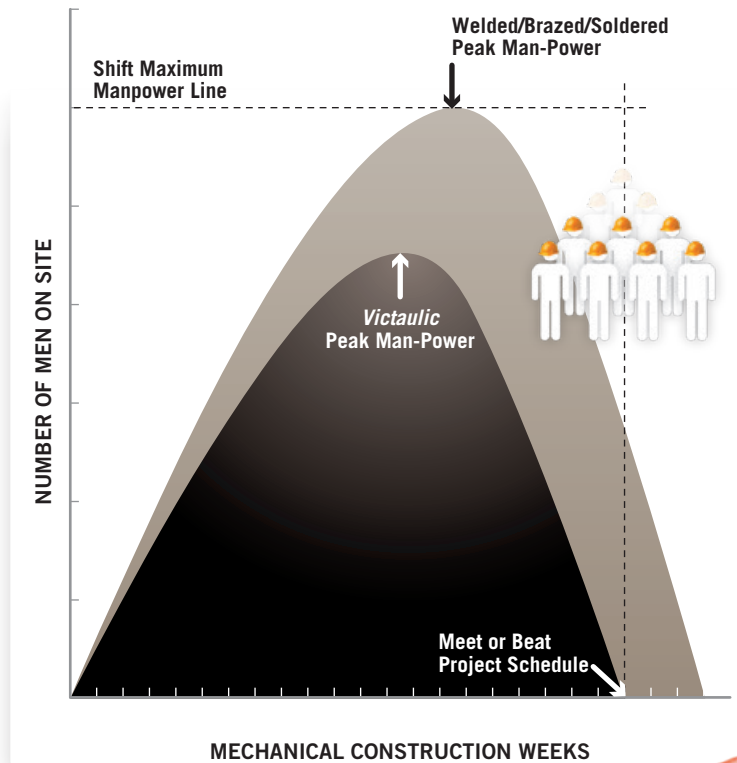
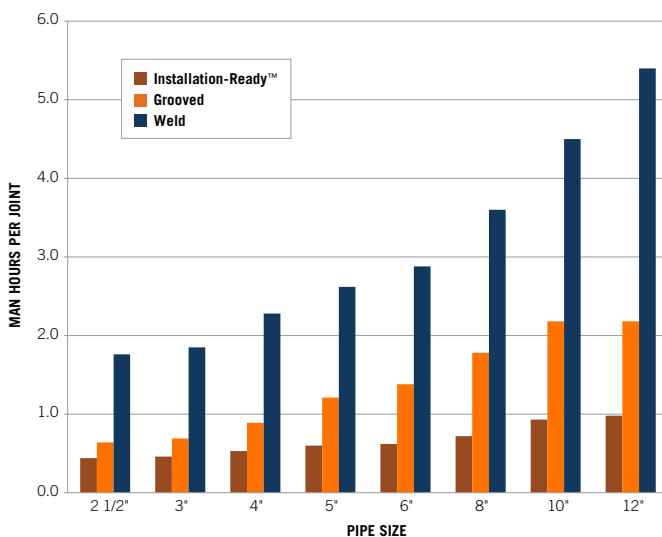
The Style 177N *QuickVic* flexible coupling for joining carbon steel and stainless steel piping systems.

## Nothing competes with Victaulic® Installation-Ready™ technology.

### COMPRESS PROJECT SCHEDULES.

Standard grooved couplings install up to 5 times faster than welded joints and up to 3 times faster than flanged.

Now, *Victaulic Installation-Ready* couplings install in less than half the time of standard grooved couplings.



### REDUCE MATERIAL HANDLING.

Unlike standard couplings, *Installation-Ready* couplings are installed without the need to disassemble the coupling. No loose bolts and nuts translates to less material handling on site.

### BETTER MANAGE LABOR RISK.

Because *Installation-Ready* couplings require fewer steps to install, the result is consistently faster pipe joints which allows contractors to optimize crew size and better manage their labor risk.

### ENHANCE JOBSITE SAFETY.

No flames. No fumes. No loose parts. In addition to being flame-free and devoid of noxious fumes during installation, *Installation-Ready* couplings feature no loose parts to drop or lose, reducing material handling on site and thereby reducing risk of injury.



# INSTALLATION-READY™ TECHNOLOGY

A truly innovative pipe joining solution,  
no need to disassemble, no loose parts.

Victaulic's patented Installation-Ready™ couplings provide fast, easy pipe connections.

No need to disassemble the coupling. No loose parts to lose or drop. The single unit design allows an installer to assemble an *Installation-Ready* coupling by simply inserting the coupling onto the grooved end of a pipe, fitting, valve or accessory and then tightening the nuts.

## LUBE IT!

Apply a thin coat of Victaulic lubricant to the sealing lips of the gasket.



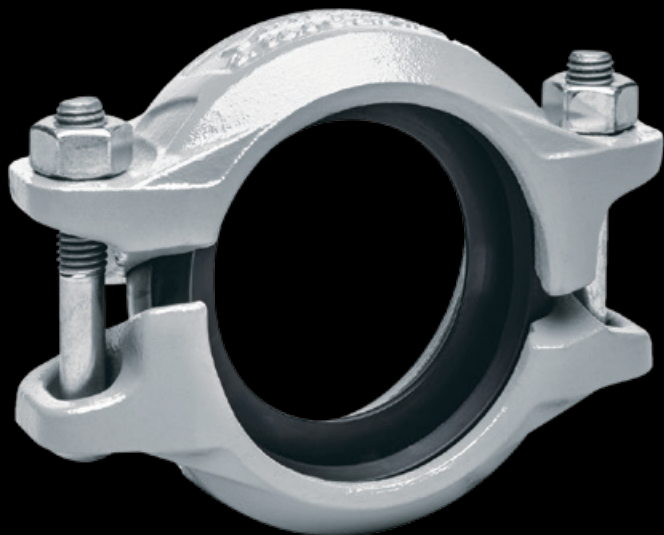
## PUSH IT!

Simply push the *Installation-Ready* coupling onto a grooved pipe end or component. The gasket center lip lets you know when to stop.



### “EHP” DELIVERS BETTER PERFORMANCE.

Most *Installation-Ready* couplings feature Victaulic's proprietary Grade “EHP” EPDM gasket material for unmatched performance on water systems from -30°F to +250°F | -34°C to +121°C. EHP is geometrically optimized for unparalleled performance under pressure, heat, assembly, stress and relaxation.



### FOR USE ON STAINLESS STEEL.

Style 107N and Style 177N QuickVic™ couplings can be used on Schedule 10S (or heavier) stainless steels applications<sup>1</sup> and are available hot dipped galvanized upon request. For thin wall stainless steel pipe, Victaulic recommends the use of Style E497 StrengThin™ 100 couplings.

## JOIN IT!

Push the second pipe end or component up to the center lip of the gasket from the other side of the coupling.



## TIGHTEN IT!

Using a standard hand tool or an impact wrench,<sup>2</sup> tighten the two bolts for a secure, reliable joint.



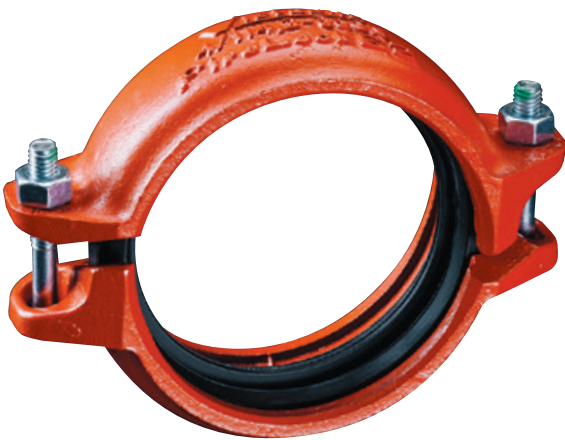
### FURTHER ENHANCE EFFICIENCY.

Installation-Ready couplings are installed using standard hand tools; however, to further enhance efficiency on the job, these couplings can be installed using a cordless impact wrench.<sup>2</sup>

- <sup>1</sup> For pressure and temperature ratings when used with stainless steel, contact Victaulic. The Rx roll set is necessary for grooving stainless steel, see publication 24.01 for more details.
- <sup>2</sup> Consult Victaulic I-100 Field Installation Handbook for proper impact wrench installation usage.



For illustration purposes only. Refer to the appropriate Installation Instructions.



Style 009N   
FireLock EZ™ Rigid Coupling

**Applications**  
Fire Protection

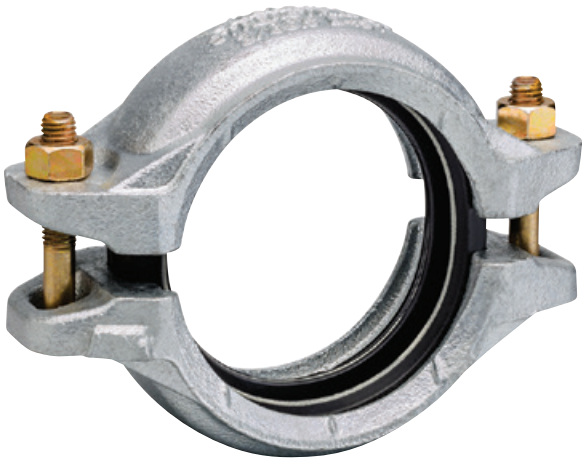


**Pipe Material**  
Carbon Steel

**Gasket Grade<sup>3</sup>**  
“E” Type A EPDM

**Maximum Temperature Rating**  
Ambient

**Maximum Pressure Rating**  
365 psi | 2517 kPa | 25 bar



Style E497  
StrengThin™ 100 Rigid Coupling

**Applications**  
Cooling, Chilled and Heating Water,  
Air with Oil Vapors, Potable Water



**Pipe Material**  
Thin Wall Stainless Steel

**Gasket Grade<sup>3</sup>**  
“EF” EPDM, “EHP” EPDM and “T” Nitrile

**Maximum Temperature Rating**  
250° F | 121° C

**Maximum Pressure Rating**  
232 psi | 1600 kPa | 16 bar



Style 107N  
QuickVic™ Rigid Coupling

**Applications**  
HVAC, Utility Piping,  
Process Piping



**Pipe Material**  
Carbon Steel, Schedule 10 (or heavier)  
Stainless Steel <sup>1</sup> and Galvanized

**Gasket Grade<sup>3</sup>**  
“EHP” EPDM and “T” Nitrile

**Maximum Temperature Rating**  
250° F | 121° C

**Maximum Pressure Rating**  
750 psi | 5171 kPa | 52 bar



Style 177N  
QuickVic™ Flexible Coupling

**Applications**  
HVAC, Utility Piping,  
Process Piping, Mining



**Pipe Material**  
Carbon Steel, Schedule 10 (or heavier)  
Stainless Steel <sup>1</sup> and Galvanized

**Gasket Grade<sup>3</sup>**  
“EHP” EPDM and “T” Nitrile

**Maximum Temperature Rating**  
250° F | 121° C

**Maximum Pressure Rating**  
1000 psi | 6895 kPa | 69 bar

1 For pressure and temperature ratings when used with stainless steel, contact Victaulic.  
The Rx roll set is necessary for grooving stainless steel, see publication 24.01 for more details.  
3 Additional gasket grades may be available. Consult the appropriate product submittal for a complete listing.



#### U.S./World Headquarters

4901 Kesslersville Road  
Easton, PA 18040 USA

◀ [victauliclocations.com](http://victauliclocations.com)

#### EMEA

Prijkelstraat 36  
9810 Nazareth, Belgium

#### Asia Pacific

Unit 808, Building B  
Hongwell International Plaza  
No.1602 West Zhongshan Road  
Shanghai, China 200235



PB-110-EU 6064 REV F 05/2018

*Victaulic* and all other Victaulic marks are the trademarks or registered trademarks of Victaulic Company, and/or its affiliated entities, in the U.S. and/or other countries. All other trademarks listed herein are the property of their respective holders, in the U.S. and/or other countries. The terms "Patented" or "Patent Pending" refer to design or utility patents or patent applications for articles and/or methods of use in the United States and/or other countries.

© 2018 VICTAULIC COMPANY. ALL RIGHTS RESERVED.

