



**PRESTO®**

Indispensable **tapware**  
**and equipment for people**  
**with reduced mobility** for  
healthcare establishments

---

**FRENCH TAPWARE**

SENSOR | THERMOSTATIC CONTROL | ERGONOMIC  
HYGIENIC | WITHOUT RISK OF BURNS

## CONTENTS

04 _ 09	The PRESTO® Group
10 _ 11	The 2 major risks
12 _ 15	3 expert technologies
16 _ 19	The 3 dedicated ranges

## **SELECTION FOR CARE FACILITIES**

**20 \_ 39 Private & public hospitals**


**40 \_ 47 Care homes**

**48 \_ 55 Non-medical areas**

542091434 Nanterre Trade and Companies Register - Photo credits: © J.ben /  
© Chinnapong, © borchee, © imaginima, © JazzIRT, © jentakpictures, © mapodile,  
© monkeybusinessimages, © PhonlamaPhoto, © photographer, © rfranca, © simarik,  
© Wavebreakmedia, © YurolaitsAlbert, © Dean Mitchell - iStock / © ercan\_senkaya,  
© jiravut, © romaset, © Chinnapong, © denisismagilov, © sveta, © F16-IS0100,  
© martinov AdobeStock - Code Z613.7 Edition August 2021 - Design production: Aire







## **A century of water conservation and safety** for shared tap users counts!

For 100 years, PRESTO® has been designing and manufacturing tapware solutions for public areas to meet a specific water consumption need for each type of building, use or user. From the outset, the inventiveness of the founders and the remarkable effectiveness of the products quickly established PRESTO® as a technological reference in the various establishments receiving the most sensitive members of the public, such as the healthcare sector.

SANIFIRST® solutions - a Group brand - are specially designed to meet the particular needs of care facilities! High technology, ergonomics and design provide a response that is always adapted, safe, practical, ecological and economical for all types of users: carers, patients, visitors and maintenance staff.

Over the years, PRESTO® has adapted and innovated so that every individual, whether a demanding professional or a vulnerable patient in a healthcare establishment, can use water without risk. An unwavering commitment that has been maintained throughout the world and over the long term.

**PRESTO® loves water – a love that lasts a lifetime.**



# THE PRESTO® GROUP

## Inventing new ways to use a shared tap

---

PRESTO® is a company that is 100% committed to its field and believes industry has a major responsibility to the planet. By creating a self-close technology that limits water consumption, PRESTO® has sustainably improved consumption of one of our most important resources: water.

A true technology influencer, PRESTO® has changed the way things are done by equipping millions of places and has inspired many manufacturers. Its unique technological secret gives its products incomparable qualities of hygiene, robustness and comfort. Its obsession remains unchanged: to enable places that need to use a lot of water to save water and to make their users safer.

### **PRESTO® can be found in all establishments open to the public**

Early childhood, education, outdoor, leisure, trade, worship, sport, high security, culture, café-hotel-restaurant, healthcare, transport, office and industry. Each PRESTO® product is designed according to the specificities of use and is also adapted to renovation or construction constraints in France and in all other countries in the world.

# Healthcare tapware that responds to the uses and challenges

Healthcare establishments continually receive vulnerable members of the public. For these establishments, there are health, regulatory and economic challenges! A context in which PRESTO® solutions are a great asset!

## Five reasons why healthcare facilities rely on PRESTO®

- ❶ Products that meet the highest hygiene and safety standards, efficiency and water saving demands.
- ❷ Innovative, intelligent and contactless technology
- ❸ Simple installation and maintenance
- ❹ Ergonomics that make taps easy to use, by any member of the public
- ❺ Compatibility without limits

With PRESTO®, tapware is not a matter of concern, but an effective means of providing comfort and safety to users of healthcare facilities, while controlling costs, water and energy consumption.





# The PRESTO® company is...

## A FAMILY STORY

In 1927, brothers André and Lucien Patient invent timed-flow tapware to prevent constantly running water in public sanitary facilities. For them, performance is already synonymous with saving money!

## 2 BRANDS

PRESTO® for the community  
SANIFIRST® for the healthcare sector

## 6 PRODUCT CATEGORIES

- Washbasin
- Professional kitchen
- Shower
- Laboratory
- Urinal
- Flush

## 2 ADDITIONAL MARKETS

- Construction and renovation
- Spare parts

## PRESENT IN 80 COUNTRIES WORLDWIDE

## 3 PRODUCTION SITES

2 in France and 1 in Portugal

## 7 COMMERCIAL SUBSIDIARIES INTERNATIONALLY

## 69 PATENTS FILED

## 220 EMPLOYEES



## An industrial charter to match our commitments

Our products and solutions are designed and developed with our values in mind: quality, design, technology, responsibility.

### QUALITY PRODUCTS

- /// Guaranteed 10 years\*
- /// Certified ISO 9001 since 1995
- /// Certified high quality: ACS, NF and SECURITAS

### A CONSTANTLY DEVELOPING PERFORMANCE

- /// Unique technology on the market
- /// Active and integrated R&D

### EXPERTISE THAT GOES BEYOND PRODUCTS

- /// Supporting professionals and projects over the long term
- /// A gateway to obtaining eco-labels and credentials of high environmental quality

\* Varies between 3, 5 and 10 years depending on the type of product.





# Healthcare references



**Royal Edinburgh Hospital**

United Kingdom

**Royal Liverpool Hospital**

United Kingdom

**COVID YARD Regional Hospital  
Waterford**

United Kingdom

**Køge Hospital**

Denmark

**Albatros Poteaupré**

Belgium

**Albatros Signy-le-Petit**

Belgium

**Centre hospitalier Titeca**

Belgium

**CHU Marie Curie**

Belgium

**Lanarca Hospital**

Cyprus

**Hôtel-Dieu de France**

Lebanon

**Prince Mansour Hospital**

Saudi Arabia

**King Abdullah Hospital-Bisha**

Saudi Arabia

**Aflaj Central Hospital**

Saudi Arabia

**Gurayat General Hospital**

Saudi Arabia

**City Hospital**

Germany

**St. Antonius Hospital**

Germany

**GPR Clinics**

Germany

**Diakonie**

Germany

**Magrabi Hospital**

Qatar

**Hôpital Saint-Anne**

France

**CHU Bordeaux**

France

**Institut de cancérologie  
Gustave Roussy**

France

# THE 2 MAJOR RISKS



A healthcare facility is made up of very different areas, each with its own characteristics, uses and water requirements. But all **patient rooms, treatment rooms, operating theatres, all visitor toilets, staff changing rooms, laboratories and kitchens/cafeterias** have risks of burns and bacterial growth.

## Burns

The primary victims are children and the elderly, who are thrown off balance when they are burned by hot water.

**CONSEQUENCE:** in a patient's room, the reflex to reach for the tap is the cause of serious burns if the tap does not have a "cold body".

### In practice:

#### **To what degree and how long does it take to burn?**

- /// With hot water at 60°C, an adult gets 2<sup>nd</sup> degree burns in 5 seconds, 1 second is all it takes for a child under 5 years old.
- /// With hot water at 50°C, the burn occurs after several minutes: 5 minutes for an adult and 2.5 minutes for a child.

As required by the decree of 30 November 2005, for safety reasons, it is best to limit the maximum temperature of domestic hot water to 50°C at tapping points in all rooms used for personal hygiene.



# Bacterial growth

In order to be classed as drinkable, water must have a hot water content of 0% (bacteria thrive in a warm environment). However, when they are turned off, most taps allow hot water to mix with the cold, increasing the risk of contamination.

**CONSEQUENCE:** water – which is essential for care personnel to wash their hands and for clinical tests – becomes a means of entry for bacteria in treatment rooms, operating theatres and laboratories. A source of transmission of nosocomial diseases such as *Pseudomonas aeruginosa*, which grows in water between 4 and 45°C. After contaminating taps, it proliferates on humans – including carers – through simple hand washing or after a shower.

## In practice:

### What is the best water temperature to limit the growth of bacteria such as legionella?

- /// The temperature of the stored water must be below 55°C at all times at the outlet.
- /// The water must be continuously held at a temperature of greater than 50 C at all points on the network (with the exception of terminal antennas with a length of less than 3 metres), including in the return of columns and loops.
- /// The water temperature must be reduced by way of mixing (mechanical or thermostatic) as close as possible to the tapping point so that it is less than 40/45°C.





# 3 EXPERT TECHNOLOGIES

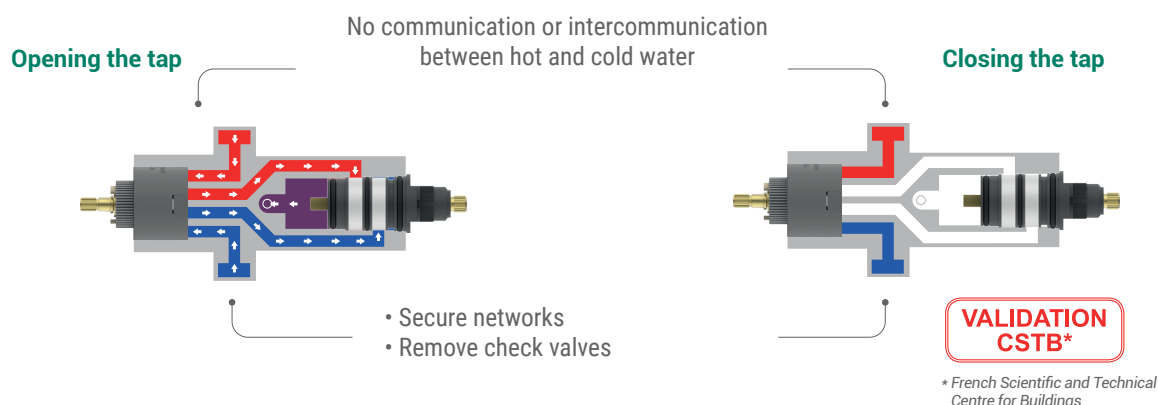


# Technology

## MasterMix®

**MasterMix®** is a patented technology that **ensures double safety for the user: anti-scald and anti-bacterial growth** (network safety). When the mixer tap is in the closed position, **contamination is impossible**. This technology is available **for washbasins and showers**.

**HOW?** The mixing chamber is downstream of the plug (open/close button). There is no pressurised mixing chamber in the closed position.



### ENHANCED SAFETY

- /// Dual safety limiter: 38°C and 41°C (based on references).
- /// The secure limiter can only be unlocked by technical services in order to carry out a thermal shock.
- /// Instantaneous cut-off of DHW (domestic hot water) in case of DCW (domestic cold water) supply failure, and vice versa.



### MAXIMUM HYGIENE

- /// Removal of check valves, sources of cold water flow/hot water flow intercommunication and bacterial growth.
- /// Lack of intercommunication certified by the CSTB.



### INSTALLATION AND MAINTENANCE FACILITATED

- /// The cartridge can be changed without shutting off the water supply (leave the lever in the closed position).
- /// Unpressurised mixing chamber.
- /// Wall-mounted versions: "plug & play" mounting plate for easy maintenance.

# Ceramic cartridges

PRESTO® ceramic cartridges are all equipped with **dual flow** and **temperature lock** functions. The high and low versions also offer a **flow regulator**. This will **enable us to keep control of our water consumption** while ensuring **the comfort and safety** of all users.

3 types of cartridges:



"LOW" CARTRIDGE  
PROD. NO. 75316



"HIGH" CARTRIDGE  
PROD. NO. 75312



PRESSURE-BALANCING CERAMIC CARTRIDGE  
PROD. NO. 75313



SIGNIFICANT WATER SAVINGS

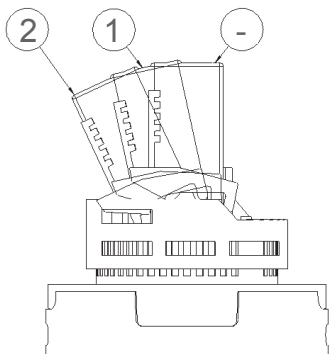
DUAL FLOW

All ceramic cartridges are equipped with a double flow function:

- /// In position 1, the flow rate is limited to 50% (6 l/min, ideal for hand washing).
- /// In position 2, the flow is more intense.

FLOW REGULATOR

An adjustment screw (supplied exclusively with high and low cartridges) allows blocking of the maximum water flow depending on real needs.



SAFE TO USE AT ALL TIMES

Equipped with a mechanical temperature limiter, in plastic or brass, the cartridges allow the flow of hot water to be reduced with 7 different settings.

Position on the cartridge	1	2	3	4	5	6	7
Limitation of hot water flow	0%	3%	10%	20%	30%	40%	50%



LONG-TERM RESISTANCE

Designed with high quality materials, PRESTO® ceramic cartridges are a winning mix of resistance and reliability for healthcare facilities:

- /// More than 500,000 endurance movements.
- /// Resistant to 85°C, thermal shock up to 90°C and static pressure up to 25 bar.
- /// Corrosion-proof materials.



# Infra-red sensors

A high-performance electronic system that allows you to **control the water usage** of your taps **without compromising the comfort of users and guaranteeing their safety**. No more taps on unnecessarily, no more over-consumption, no more bacterial growth and no more transmission of germs.



## The PRESTO® electronic remote control

PRESTO® has created a revolutionary electronic remote control to simplify and speed up all settings.

This is ideal for allowing each healthcare facility to easily adapt its programme choices to its needs (e.g. according to its attendance rate).



## REVAMPED HYGIENE

- /// 2 solenoid valves per electronic mixer tap to limit the risk of bacterial growth:
  - removable and disinfectable;
  - silicone to prevent biofilm from attaching on the membranes.
- /// Activation of a bypass allowing thermal shocks.
- /// Automatic rinsing according to the selected frequency (from 1 to 72 hours).
- /// Triggering and stopping the flow without any manual contact.



## OPTIMISED WATER SAVINGS

- /// Automatic turning on of the tap when the sensor detects a presence (detection distance adjustable from 5 to 25 cm).
- /// 2 automatic programmes:
  - On/off mode within 5 cm of the sensor;
  - Hand-wash mode at over 5 cm from the sensor.
- /// Variable flow duration:
  - Up to 99 s in on/off mode;
  - From 0 to 30 s in hand wash mode.



## INTELLIGENT SECURITY

- /// Tampering time from 0 s to 4 min in case of sensor blockage.

# 3 THE DEDICATED RANGES





# The range

## Modul'MiX®

This range of **customised, modular hospital mixer taps** is based on **a universal body**. The structure of the tap is not fixed. Other parts of the tap such as **risers, spouts, cartridges and levers** are **interchangeable** and can be modified according to the users' needs.

**THE MODUL'MIX® RANGE** is organised around a generic set of spare parts:

### Lever type



### Spout type



### Body



### LONG TERM HYGIENE

- /// The Modul'Mix electronic system has two solenoid valves (hot and cold water separation) in order to limit the risk of bacteria.
- /// Spout with smooth interior.
- /// Compatible with end filters.
- /// No retention zone.
- /// Star flow-straightener made from Hostaform reduces the risk of limescale, eliminates water retention and impurities, and is resistant to chlorine and thermal shocks.
- /// SPEX hoses resistant to chlorine and thermal shocks.



### INSTALLATION AND MAINTENANCE

- /// Can be adapted to suit all configurations in terms of height and projection upon request.
- /// Deck-mounted.



### "NF MEDICAL" CERTIFICATION

- /// Hydraulic chain meeting the requirements of NF E.C.A.U medical classification.
- /// Flow rate compliant with NF standard for medical environments; flow rate can be modified by adjustment screw if limiters removed.



# The range

## HoptiM'

This mixer tap with certified NF Medical E.C.A.U classification, has been specially **designed for health establishments and facilities for the elderly**. It combines: **slim and modern design suitable for persons with reduced mobility, sanitary safety, flexibility of use and easy maintenance**. Ideal for offering **convenience and comfort** to users.

### 3 types of lever possible:

(with or without pop-up drain)



SOLID LEVER



OPENWORK LEVER



ELBOW CONTROL



#### MAXIMUM HYGIENE

- /// Low water retention in the spout.
- /// Smooth interior and exterior body and spout (limits biofilm attachment and bacteria growth).
- /// Thermal shock possible with the lever removed.
- /// Compatible with coloured star flow-straightener: facilitates scheduled maintenance.



#### ERGONOMIC USAGE

- /// Flow and temperature limiter on the cartridge (greater versatility).
- /// Intuitive and visible markings: hot/cold.



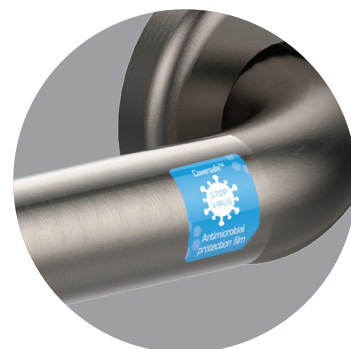
#### "NF MEDICAL" CERTIFICATION

- /// Minimum height under spout 90 mm and a minimum projection of 100 mm.
- /// Compatible with end filters.
- /// Flow rate between 4 and 6 l/min at 3 bar.

# The range of virucidal rails for persons with reduced mobility

These virucidal rails covered with **COVERSAFE™ adhesive film** ensure safe access for all users of healthcare facilities. The mineral beads in the film act as a catalyst to provide **microbial decontamination of surfaces and continuous, stable protection against viruses (including Sars-CoV2).**

Tested and validated for 4 years without loss of effectiveness!



**Grab rails and lift rails** that prevent falls and the transmission of hospital-acquired infections in all rooms of public healthcare environments.



**STRAIGHT RAIL - L. 300 MM - BRUSHED AND WHITE WITH VIRUCIDAL FILM**



**135° ANGLED RAIL - BRUSHED AND WHITE WITH VIRUCIDAL FILM**



## NATURAL TECHNOLOGY

- /// Not harmful to skin.
- /// Tested and validated by independent certified laboratories.



## EASY TO MAINTAIN

- /// Compatible with the usual household products (soap, gel, disinfectant).
- /// Anti-microbial efficacy retained after maintenance.
- /// Removal without streaking (thin, transparent film, matt appearance).



## FULL HYGIENE

- /// Continuous triple protection against viruses, bacteria, germs and moulds (Coronavirus Sars-CoV2, H1N1 influenza, gastroenteritis, herpes, conjunctivitis, *escherichia coli*, *staphylococcus aureus*, *salmonella enterica*, *pseudomonas aeruginosa*).
- /// Within 1 hour: destruction of 96% of the Sars-CoV2 Coronavirus, which causes COVID-19.
- /// Within 24 hours: destruction of 99.9% of viruses and bacteria.

- 22 High-end patient rooms
- 24 Standard patient rooms
- 28 Treatment rooms
- 32 Operating theatres
- 34 Staff changing rooms
- 36 Laboratories







# **PRIVATE & PUBLIC HOSPITALS**



## HIGH-END patient rooms

To guarantee maximum comfort and safety for all users by equipping the premium rooms with specific, high-tech tapware.



**DOUBLE ANTI-SCALD AND ANTI-BACTERIAL GROWTH SAFETY** thanks to the patented MASTERMIX® technology without check valves.



**ANTI-BACTERIAL GROWTH SAFETY AND ERGONOMICS** with the HOPTIM® range, with high headroom under the spout and no water retention, or with our electronic taps with two solenoid valves which only mix hot and cold sanitary water at the last moment to limit any risk of bacterial development.



**MAXIMUM HYGIENE** with the virucidal rail range for persons with reduced mobility equipped with a film allowing the destruction of more than 99% of microbes in 24 hours and the Sars-Cov 2 Coronavirus in 1 hour!

## WASHBASIN/MATERNITY WARD



**75845**  
Washbasin mixer tap with solid lever without pop-up drain - HOPTIM®



**75712**  
Deck-mounted thermostatic mixer tap for washbasins without pop-up drain - MASTERMIX®

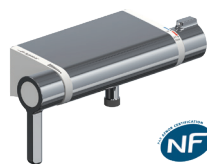


**75731**  
Single hole thermostatic baby sink or bench mixer tap - MASTERMIX®

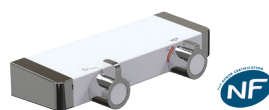


**75210**  
Mains-powered electronic mixer tap with fixed spout with temperature control

## SHOWER



**75700**  
Thermostatic shower mixer tap with low outlet - MASTERMIX®



**75708**  
Thermostatic shower panel with bottom outlet - MASTERMIX®



**75710**  
Thermostatic shower panel TOUCH® bottom outlet - MASTERMIX®

## FLUSH



**18524**  
Eco 2 l-4 l mounting frame  
Brushed chrome face  
P1000 XL E DVA



**60064**  
PRESTO® classic toilet pack  
ready to install



**60469**  
Toilet roll holder for rail diameter 32 mm  
anthracite grey ABS



**60471**  
Hand shower holder for rail diameter 32 mm -  
Satin finish

## ACCESSORY

## GRAB RAIL



**60311AV**  
Straight rail  
diameter 32 mm  
L. 300 mm  
With virucidal film



**60324AV**  
135° angled rail  
diameter 32 mm  
L. 400 x 400 mm  
With virucidal film



**60326**  
Foldaway rail  
diameter 32 mm  
L. 650 mm



**60334**  
Corner and vertical rail  
diameter 32 mm  
Left model



**60480**  
Foldaway shower seat  
with retractable legs



Products that meet the requirements of the SASO and ECAS standards





## STANDARD patient rooms

Bringing comfort to patients without changing their habits with a tap that combines comfort and anti-scald safety.



**DUAL WATER FLOW AND TEMPERATURE LOCK** with the 3-function ceramic cartridge tap which ensures water consumption control, safety of use, but also energy savings thanks to opening in 100% cold water (no mixed water).



**DOUBLE ANTI-SCALD AND ANTI-BACTERIAL GROWTH SAFETY** thanks to the patented MASTERMIX® technology without check valves.



**ENHANCED ANTI-SCALD** safety thanks to the classic thermostatic technology and its instantaneous hot water cut-off in case of cold water cut-off (and vice versa).

## WASHBASIN



**75023**  
Washbasin mixer tap  
with fixed spout  
with pop-up drain  
H 53.5 mm



**75615**  
Washbasin mixer tap  
with fixed spout  
without pop-up drain  
H 53.5 mm



**75051**  
Washbasin mixer tap  
with fixed spout  
without pop-up drain  
H 78.5 mm



**75609**  
Washbasin mixer tap  
with fixed spout  
without pop-up drain  
H 78.5 mm



**75611**  
Washbasin mixer tap  
with fixed spout  
without pop-up drain  
H 78.5 mm



**75617**  
Energy-saving  
washbasin mixer tap  
without pop-up drain  
H 92 mm



**75845**  
Washbasin mixer tap  
with solid lever  
without pop-up drain  
HOPTIM®



**75916**  
Washbasin mixer tap  
with solid lever without  
pop-up drain - Energy  
savings - HOPTIM®



**75843**  
Washbasin mixer tap  
with openwork lever  
without pop-up drain  
HOPTIM®



**75841**  
Washbasin mixer tap  
with elbow control  
without pop-up drain  
HOPTIM®

## SHOWER



**75112**  
Thermostatic shower mixer  
tap - MASTERMIX®



**75639**  
Thermal shock hospital  
thermostatic shower  
mixer tap



**75114**  
Complete shower kit with  
mixer tap - MASTERMIX®



**75072**  
Shower mixer tap  
with solid lever



**75600**  
Shower mixer tap  
with openwork lever



**75073**  
Complete shower kit  
with mixer tap 75072



Products that meet the requirements of  
the SASO and ECAS standards



### GRAB RAIL



**60451**  
Straight rail  
diameter 34 mm  
L. 300 mm  
Aluminium white ABS



**60581**  
135° angled rail  
diameter 34 mm  
L. 400 x 400 mm  
Aluminium white ABS



**60809**  
Foldaway rail  
diameter 34 mm  
L. 650 mm  
Aluminium white ABS



**60736**  
Corner and vertical rail  
diameter 34 mm  
Left/right model  
aluminium white ABS



**60815**  
Foldaway shower seat



**60584**  
Foldaway shower seat



**60575**  
Straight rail diameter 25 mm  
Bright chrome-plated



**60340**  
Straight rail diameter 25 mm  
White epoxy steel



**60579**  
135° angled rail  
diameter 25 mm  
Bright chrome-plated



**60345**  
135° angled rail  
diameter 25 mm  
White epoxy steel

### FLUSH



**18524**  
Eco 2 l-4 l mounting frame  
Brushed chrome face  
P1000 XL E DVA



**18600**  
Mounting frame  
with cistern and  
dual volume control



**60064**  
PRESTO® classic  
toilet pack  
Ready to install



**60470**  
Toilet roll holder  
for rail  
diameter 34 mm  
White ABS



**60461**  
Hand shower holder  
for rail  
diameter 34 mm  
White antibacterial ABS

### ACCESSORY



Products that meet the requirements of  
the SASO and ECAS standards





## Treatment rooms

Facilitating patient care through welcoming treatment rooms, equipped with tapware adapted to the multi-functionality of the premises.



**HIGH FLEXIBILITY** with the MODUL'MIX® modular range with a universal body, a non-fixed and retrofittable tap structure (length and type of spout, height under the spout, mechanical or electronic technology). Quick conversion of an already installed tap with only a few spare parts.



**ENHANCED ANTI-SCALD SAFETY** thanks to the classic thermostatic technology and its instantaneous hot water cut-off in case of cold water cut-off (and vice versa).



**DOUBLE ANTI-SCALD AND ANTI-BACTERIAL GROWTH SAFETY** thanks to the patented MASTERMIX® technology without check valves. Ideal in a maternity ward!



## MATERNITY WARD



**75731**  
Single hole thermostatic baby sink or bench mixer tap MASTERMIX®



**75095**  
Hairdresser mixer tap with offset



**29006**  
Thermostatic regulator with parallel inputs



**75110**  
Thermal shock hospital thermostatic bath/shower mixer tap

## WASHBASIN



**75060**  
Washbasin mixer tap with fixed or adjustable spout without pop-up waste MODUL'MIX®



**75062**  
Washbasin mixer tap with fixed or adjustable spout without pop-up waste MODUL'MIX®



**75040**  
Washbasin mixer tap with fixed or adjustable spout without pop-up drain MODUL'MIX®



**75064**  
Sink mixer tap with adjustable spout without pop-up drain MODUL'MIX®



**75066**  
Sink mixer tap with adjustable spout without pop-up drain MODUL'MIX®



**75126**  
Mixer tap with fixed or adjustable spout H 100 mm - MODUL'MIX®



**75127**  
Mixer tap with fixed or adjustable spout H 100 mm EP - MODUL'MIX®



**75135**  
Mixer tap with fixed or adjustable spout H 200 mm - MODUL'MIX®



**75143**  
Mixer tap with fixed or adjustable spout H 300 mm - MODUL'MIX®

### SINK



**75070**  
Sink mixer tap  
with adjustable spout  
with pull-out sink spray



**75622**  
Sink mixer tap  
with adjustable spout  
with pull-out sink spray



**75623**  
Sink mixer tap  
with adjustable high spout



**75624**  
Sink mixer tap with adjustable,  
pull-out sink spray



**75723**  
Wall-mounted sink mixer tap  
with adjustable bottom-  
mounted spout

### GRAB RAIL



**60315**  
Straight rail  
diameter 32 mm - L. 500 mm  
Brushed stainless steel



**60468**  
Straight rail  
diameter 34 mm - L. 500 mm  
aluminium white ABS



**60325**  
90° angled rail  
diameter 32 mm - L. 300 x 300 mm  
Brushed stainless steel



**60715**  
90° angled rail  
diameter 34 mm - L. 300 x 300 mm  
aluminium white ABS



**60311AV**  
Straight rail  
diameter 32 mm - L. 300 mm  
with virucidal film



**60501AV**  
Straight rail  
diameter 32 mm - L. 300 mm  
With virucidal film



Products that meet the requirements of  
the SASO and ECAS standards







## Operation rooms

Ensure efficiency and safety through compliant and ergonomic tapware that caregivers can trust.



**HIGH QUALITY** with the mechanical MODUL'MIX® modular range certified "NF medical standard" (NF 077-15).



**ANTI-BACTERIAL GROWTH SAFETY** with the MODUL'MIX® electronic modular range equipped with 2 solenoid valves that prevent upstream mixing of domestic hot and cold water.



**75135**  
Mixer tap with fixed  
or adjustable spout  
H 200 mm MODUL'MIX®



**75143**  
Mixer tap with fixed  
or adjustable spout  
H 300 mm MODUL'MIX®



**75871**  
Mains-powered electronic  
mixer tap H 200 mm  
MODUL'MIX®



**75880**  
Mains-powered mixer tap  
H 300 mm MODUL'MIX®



**75151**  
Mains-powered electronic  
mixer tap H 200 mm  
MODUL'MIX®



**75161**  
Mains-powered mixer tap  
H 300 mm MODUL'MIX®



**75221**  
Wall-mounted discharge  
with adjustable and  
removable spout above



**55135**  
Deck-mounted electronic  
mixer tap - PRESTO® 5750



**75216**  
Wall-mounted discharge  
with removable fixed spout



**31683**  
Leg-operated  
PRESTO® 712



**71044**  
Suspended collective basin  
1,800 mm - Stainless steel



**23644**  
PRESTO® 530 wall or  
ground pedal



Products that meet the requirements of  
the SASO and ECAS standards



## Staff changing rooms

Improving the well-being of care staff and their health and safety with comfortable, practical, hygienic and modern equipment.



**ERGONOMICS AND ANTI-BACTERIAL GROWTH SAFETY** with the HOPTIM'® range of taps, which combines a slim and elegant design, high headroom under the spout, no water retention.



**COMFORT AND CONVENIENCE** thanks to the PRESTOTEM® 2 TOUCH® MASTERMIX® shower panel and its touch activation, its adjustable shower head and rain jet, its anti-scald safety (patented MASTERMIX® technology).



**EASY TO USE AND ALWAYS CLEAN** thanks to the DL 400 E SENSOR® range of touchless showers with start/stop, time and automatic flush functions.



**MAXIMUM HYGIENE** with the range of virucidal rails for persons with reduced mobility equipped with a film allowing the destruction of more than 99% of microbes in 24 hours and 96% of the Coronavirus Sars-Cov 2 in 1 hour!



## GRAB RAIL



**60472**  
Vertical straight rail with  
32 mm diameter sliding  
block



**60664**  
Vertical straight rail with  
34 mm diameter sliding  
block



**60333**  
T rail diameter 32 mm



**60754**  
T rail diameter 34 mm



**60311AV**  
Straight rail  
diameter 32 mm - L. 300 mm  
With virucidal film



**60501AV**  
Straight rail  
diameter 32 mm - L. 300 mm  
With virucidal film



**60529AV**  
135° angled rail  
diameter 32 mm - L. 400 x 400 mm  
With virucidal film

## SHOWER



**88858**  
Thermostatic shower panel  
PRESTOTEM® 2



**88860**  
Thermostatic shower panel  
PRESTOTEM® 2



**27470**  
Electronically triggered shower  
DL 400 E-SENSOR®

## WASHBASIN



**75845**  
Washbasin mixer tap  
with solid lever  
without pop-up drain -  
HOPTIM®



**75843**  
Washbasin mixer tap  
with openwork lever  
without pop-up drain -  
HOPTIM®



## Laboratories

Promote the working comfort of operators thanks to tapware that is as efficient and effective as it is attractive and pleasant to use.



**DESIGN, HYGIENE AND DURABILITY** with FIRST LABO 2 laboratory taps. A new modern and refined range with aesthetic bending, ergonomic knob, high watertightness of the bowl, resistance to corrosion and impact, while meeting the criteria of the EN 13792 standard.



**SPEED, EFFICIENCY AND SAFETY** with the PRESTO® safety tap with fast flow allowing very fast rinsing of the body part exposed to chemicals. PRESTO® safety taps have been awarded the European standard EN15154-1&2 and the American standard ANSI Z 358.1-2004.

## LABORATORY BENCH / DRINKING WATER



**76785**  
Deck-mounted candlestick  
with one tap  
Projection 190 mm



**76790**  
Deck-mounted candlestick  
with two taps  
Projection 210 mm



**76794**  
Deck-mounted mixer  
with two taps  
Projection 200 mm



**76806**  
Deck-mounted column  
with one tap  
Projection 200 mm



**76800**  
Deck-mounted column -  
Projection 200 mm



**76810**  
Wall-mounted remote control tap



**76811**  
Wall-mounted tap with telescopic rod

## LABORATORY BENCH / COMPRESSED AIR



**76812**  
Deck-mounted with one tap  
Projection 103 mm



**76815**  
Deck-mounted with two taps at 90°  
Projection 103 mm



**76813**  
Tap on base  
Projection 114 mm



**76591**  
Deck-mounted nozzle diameter 6 mm



**76814**  
Wall-mounted tap with telescopic rod



Products that meet the requirements of  
the SASO and ECAS standards



### LABORATORY BENCH / NITROGEN



**76817**  
Deck-mounted socket  
with one tap  
Projection 103 mm



**76820**  
Deck-mounted socket  
with two taps at 90°  
Projection 103 mm



**76818**  
Tap on base  
Projection 114 mm



**76589**  
Deck-mounted nozzle  
diameter 6 mm



**76819**  
Wall-mounted tap with  
telescopic rod

### LABORATORY BENCH / VACUUM



**76822**  
Deck-mounted socket  
with one tap  
Projection 103 mm



**76825**  
Deck-mounted socket  
with two taps at 90°  
Projection 103 mm



**76823**  
Tap on base Projection  
114 mm



**76530**  
Deck-mounted nozzle  
diameter 6 mm



**76824**  
Wall-mounted tap with  
telescopic rod

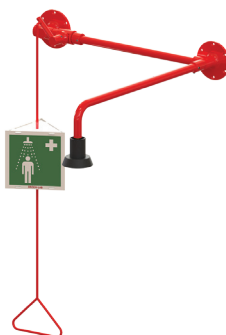
### SAFETY



**85671**  
Combined safety  
shower/eye wash station



**85753**  
Safety shower  
ceiling supply



**86203**  
Safety shower with  
visible water inlet



**85765**  
Safety eye wash station  
model with bowl



**86202**  
Safety  
eye wash  
station



Products that meet the requirements of  
the SASO and ECAS standards



42	Patient rooms
46	Treatment rooms







# CARE HOMES



## Patient rooms

Bringing comfort to patients without changing their habits with a tap that combines comfort and anti-scald safety.



**DOUBLE WATER FLOW AND TEMPERATURE LOCK** with the 3-function ceramic cartridge valve that ensures control of water consumption and safety of use.



**DOUBLE ANTI-SCALD AND ANTI-BACTERIAL GROWTH SAFETY** thanks to the patented MASTERMIX® technology without check valves.



**ENHANCED ANTI-SCALD** safety thanks to the classic thermostatic technology and its instantaneous hot water cut-off in case of cold water cut-off (and vice versa).



## WASHBASIN



**75023**  
Washbasin mixer tap  
with fixed spout  
with pop-up drain  
H 53.5 mm



**75615**  
Washbasin mixer tap  
With fixed spout  
without pop-up drain  
H 53.5 mm



**75608**  
Washbasin mixer tap  
with fixed spout  
with pop-up drain  
H 78.5 mm



**75609**  
Washbasin mixer tap  
with fixed spout  
without pop-up drain  
H 78.5 mm



**75611**  
Washbasin mixer tap  
with fixed spout  
without pop-up drain  
H 78.5 mm



**75844**  
Washbasin mixer tap  
with solid lever  
with pop-up waste  
HOPTIM'®



**75845**  
Washbasin mixer tap  
with solid lever without  
pop-up waste  
HOPTIM'®



**75840**  
Washbasin mixer tap  
with elbow control  
without pop-up drain  
HOPTIM'®



**75841**  
Washbasin mixer tap  
with elbow control  
without pop-up drain  
HOPTIM'®



**75843**  
Washbasin mixer tap  
with openwork lever  
without pop-up drain  
HOPTIM'®

## SHOWER



**75072**  
Shower mixer tap  
with solid lever



**75600**  
Shower mixer tap  
with openwork lever



**75640**  
Shower thermostatic  
mixer tap



**75638**  
Shower thermostatic  
mixer tap



**75112**  
Thermostatic shower mixer  
tap - MASTERMIX®



**75114**  
Complete shower set  
with mixer tap MASTERMIX®



Products that meet the requirements of  
the SASO and ECAS standards



### FLUSH



**18524**  
Eco 2 l-4 l-mounting  
frame | Brushed chrome  
face P1000 XL E DVA



**18600**  
Mounting frame with  
cistern and dual volume  
control



**60066**  
PRESTO® comfort  
toilet pack



**18605**  
Mounting frame  
with offset control

### ACCESSORY



**60064**  
PRESTO® classic  
toilet pack  
Ready to install



**60470**  
Toilet roll holder for rail  
diameter 34 mm  
- white ABS



**60461**  
Hand shower holder for rail  
diameter 34 mm  
White antibacterial ABS

### GRAB RAIL



**60451**  
Straight rail  
diameter 34 mm  
L. 300 mm  
Aluminium white ABS



**60581**  
135° angled rail  
diameter 34 mm  
L. 400 x 400 mm  
aluminium white ABS



**60809**  
Foldaway rail  
diameter 34 mm  
L. 650 mm  
Aluminium white ABS



**60736**  
Corner and vertical rail  
diameter 34 mm  
Left/right model



**60815**  
Foldaway shower seat



Products that meet the requirements of  
the SASO and ECAS standards





## Treatment rooms

Facilitating patient care through welcoming treatment rooms, equipped with tapware adapted to the multi-functionality of the premises.



**HIGH FLEXIBILITY** with the MODUL'MIX® modular range with a universal body, a non-fixed and retrofittable tap structure (length and type of spout, height under spout, mechanical or electronic technology). Quick conversion of an already installed tap with only a few spare parts.



**ENHANCED ANTI-SCALD SAFETY** thanks to the classic thermostatic technology and its instantaneous hot water cut-off in case of cold water cut-off (and vice versa).



**DOUBLE ANTI-SCALD AND ANTI-BACTERIAL GROWTH SAFETY** thanks to the patented MASTERMIX® technology without check valves. Ideal in a maternity ward!



## WASHBASIN



**75060**  
Washbasin mixer tap  
with fixed or adjustable  
spout without pop-up  
drain MODUL'MIX®



**75062**  
Washbasin mixer tap  
with fixed or adjustable  
spout without pop-up  
drain MODUL'MIX®



**75040**  
Washbasin mixer tap  
with fixed or adjustable  
spout without pop-up  
drain MODUL'MIX®



**75064**  
Sink mixer tap  
with adjustable spout  
without pop-up drain  
MODUL'MIX®



**75066**  
Sink mixer tap  
with adjustable spout  
without pop-up drain  
MODUL'MIX®

## SINK



**75070**  
Sink mixer tap with  
adjustable spout  
with pull-out sink spray



**75622**  
Sink mixer tap with  
adjustable spout  
with pull-out sink spray



**75623**  
Sink mixer tap with  
adjustable high spout



**75723**  
Wall-mounted sink  
mixer tap with  
adjustable bottom-  
mounted spout

## GRAB RAIL



**60315**  
Straight rail  
diameter 32 mm  
L. 500 mm  
Brushed stainless steel



**60468**  
Straight rail  
diameter 34 mm  
L. 500 mm  
Aluminium white ABS



**60325**  
90° angled rail  
diameter 32 mm  
L. 300 x 300 mm  
Brushed stainless steel



**60715**  
90° angled rail  
diameter 34 mm  
L. 300 x 300 mm  
Aluminium white ABS



**60311AV**  
Straight rail  
diameter 32 mm  
L. 300 mm  
With virucidal film




**60501AV**  
Straight rail  
diameter 32 mm  
L. 300 mm  
With virucidal film

50	Visitor toilets
54	Cafeterias/Kitchens







# **NON-MEDICAL AREAS**





## Visitor toilets

Reduce the water consumption of public toilets without impairing their proper functioning, guaranteeing perfect hygiene without sacrificing aesthetics.



**OPTIMAL COMFORT AND DESIGN** with the PRESTO NOVA® intelligent electronic range, which combines robustness, comfort of use, easy maintenance and contemporary style with its 3 finishes.



**MAXIMISED HYGIENE AND WATER SAVING** with the PRESTO LINEA® contactless electronic range, comfortable and easy to clean with its tubular design and smooth body. Equipped with an automatic rinsing system, it limits stagnation of water in the networks. Versions with lead-free brass are also available.



**RESISTANCE TO INTENSIVE USE, HYGIENE AND AESTHETICS GUARANTEED** thanks to the PRESTO® 7000 XL N direct flush range with dual release (mechanical and electronic). It comes with a new matte black anti-fingerprint finish and a rose gold effect button.



**COMPACT AND FULLY INTEGRATED**, the SENSAO® 8400 N range of electronic urinals can be integrated into any environment. It is interchangeable with many urinal taps on the market. Installation and maintenance are made easy.

## WASHBASIN



**55375**  
Deck-mounted electronic mixer tap  
3 l/min - PRESTO NOVA®



**55383**  
Deck-mounted electronic mixer tap  
1.9 l/min - PRESTO NOVA®



**55391**  
Deck-mounted electronic mixer tap - PRESTO NOVA®



**55395**  
Deck-mounted simple electronic tap -  
PRESTO NOVA®



**56236**  
Deck-mounted electronic mixer  
tap - PRESTO SO'O®

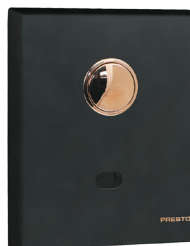


**57102**  
Simple electronic wall-  
mounted tap PRESTO  
LINEA®

## FLUSH



**55432**  
Sensor tap  
for direct flush PRESTO®  
7100 XL N



**55478**  
Sensor tap for direct flush  
PRESTO® 7200 XL N



**55436**  
Sensor tap for direct flush  
PRESTO® 7300 XL N



**18506**  
Mounting frame for direct  
flush PRESTO® 7100 XL N

NON-MEDICAL AREAS



Products that meet the requirements of  
the SASO and ECAS standards

### URINAL



**55371**  
Sensor tap for urinal  
PRESTO SENSÃO®  
8400 N



**55372**  
Siphon tube for siphonic  
action urinals



**55444**  
Sensor tap for urinal  
PRESTO SENSÃO®  
8100 N



**55440**  
Sensor tap for urinal  
PRESTO SENSÃO®  
8600 N



**55480**  
Sensor tap for urinal  
PRESTO SENSÃO®  
8300 N

### ACCESSORIES



**60632**  
Wall-mounted bright  
polished stainless steel  
soap dispenser



**60364**  
Compact hand dryer-  
C-DRY



**60361**  
Deck-mounted  
hand dryer - H-DRY



**52043**  
Deck-mounted electronic  
soap dispenser  
PRESTORIZON®



**52042**  
Wall-mounted electronic  
soap dispenser  
PRESTORIZON®

### GRAB RAIL



**60311AV**  
Straight rail  
diameter 32 mm  
L. 300 mm  
With virucidal film



**60501AV**  
Straight rail  
diameter 32 mm  
L. 300 mm  
With virucidal film



**60324AV**  
135° angled rail  
diameter 32 mm  
L. 400 x 400 mm  
With virucidal film



**60529AV**  
135° angled rail  
diameter 32 mm  
L. 400 x 400 mm  
With virucidal film



Products that meet the requirements of  
the SASO and ECAS standards





NON-MEDICAL AREAS



## Cafeterias/Kitchens

Maintain perfect hygiene while facilitating the work of the kitchen staff thanks to functional tap solutions, designed by and for professionals.



**ERGONOMICS, ROBUSTNESS AND EFFICIENCY** with the PRESTO CHEF® range dedicated to professional kitchens, composed of pre-wash taps – with a PRESTO® hand shower that combines endurance, efficiency and jet quality – and more classic taps (mixer type).



**FULL HYGIENE** with the PRESTO SAFE® range of washbasin sensor taps (wall-mounted or deck-mounted versions). These self-close taps are designed to meet the requirements of public sanitary facilities and feature touchless activation, an automatic flush function and a “plug & play” system for easy installation (even when replacing a mechanical tap).



**PRACTICALITY AND CLEANLINESS** thanks to the range of remote controls (foot or leg) which allow the tap to be activated without manual contact.



**70830**  
Deck-mounted mini column mixer tap with hand shower and spout - PRESTO CHEF®



**70820**  
Deck-mounted mixer tap column with hand shower and spout - PRESTO CHEF®



**70818**  
Deck-mounted mixer tap column with hand shower and spout - PRESTO CHEF®



**70826**  
Wall-mounted mixer tap, 2 holes with hand shower and spout - PRESTO CHEF®



**70802**  
Deck-mounted mixer tap with spout on top - PRESTO CHEF®



**70832**  
Deck-mounted mixer tap Special bar - PRESTO CHEF®



**70804**  
Wall-mounted mixer tap, 2 holes with spout on top PRESTO CHEF®



**70806**  
Wall-mounted mixer tap, 2 holes with bottom-mounted spout PRESTO CHEF®

## OTHER TAPS



**75623**  
Sink mixer tap with adjustable high spout



**75624**  
Sink mixer tap with pull-out sink spray



**64675**  
Simple wall-mounted timed-flow tap - PRESTO SAFE®



**68075**  
Wall-mounted timed-flow mixer tap PRESTO SAFE®



**55162**  
Electronic mixer tap PRESTO VOLTA®



**23614**  
PRESTO® 520 wall or floor pedal



**23644**  
PRESTO® 530 wall or floor pedal



**31683**  
Leg-operated PRESTO® 712



Products that meet the requirements of the SASO and ECAS standards





# PRESTO<sup>®</sup>

loves water

A dedicated download area: [prestodatashare.com](http://prestodatashare.com)

BIM objects to download on:  
[www.prestobim.com](http://www.prestobim.com)



**PRESTO**



**LES ROBINETS PRESTO S.A.**

7, RUE RACINE

92542 MONTRouGE CEDEX - FRANCE

Tel.: +33 (0)1 46 12 34 56 | Fax: +33(0)1 47 35 69 82

Email: [adv.export@presto.fr](mailto:adv.export@presto.fr)

[www.presto.fr](http://www.presto.fr) | [www.presto-group.com](http://www.presto-group.com) | [www.prestobim.com](http://www.prestobim.com)