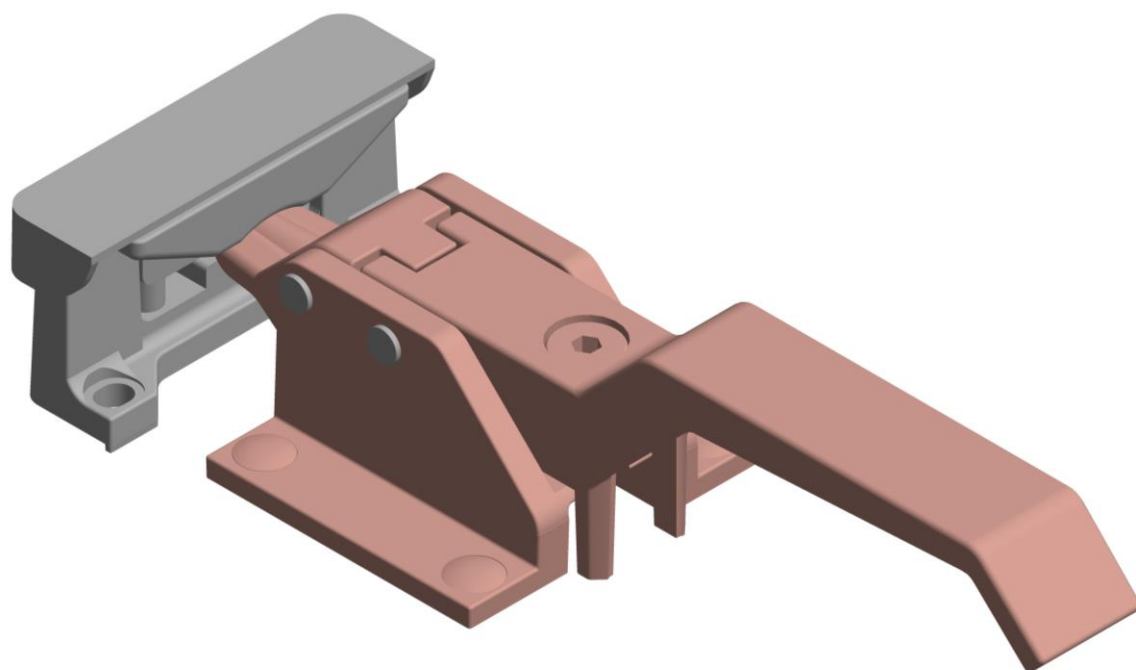




NEW PRODUCT 2022

FULL METAL HANDLE AH ISO-01 ADJ

ProLam full metal adjustable handle

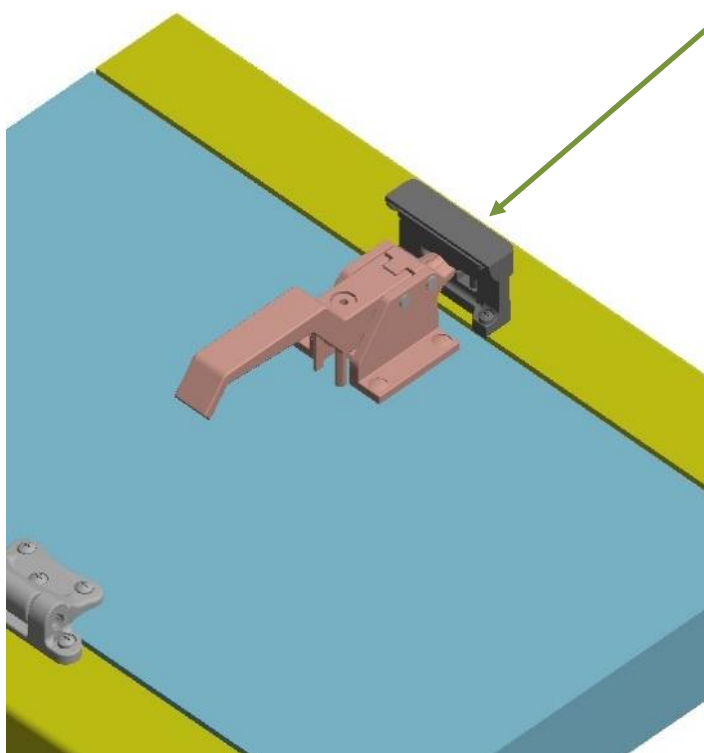


STRUCTURE

- Full aluminium body;
- Adjustable latch to regulate the pressure onto the panel;
- Resistant and sturdy thanks to its metal body

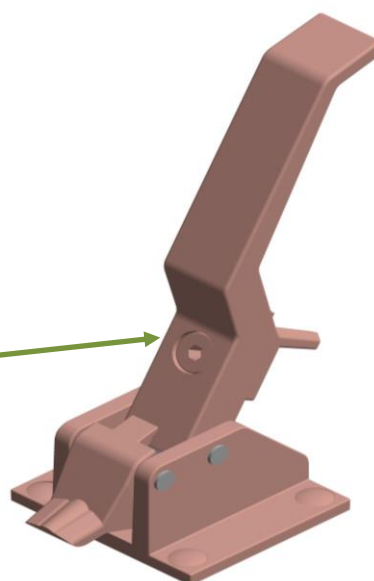
FEATURES

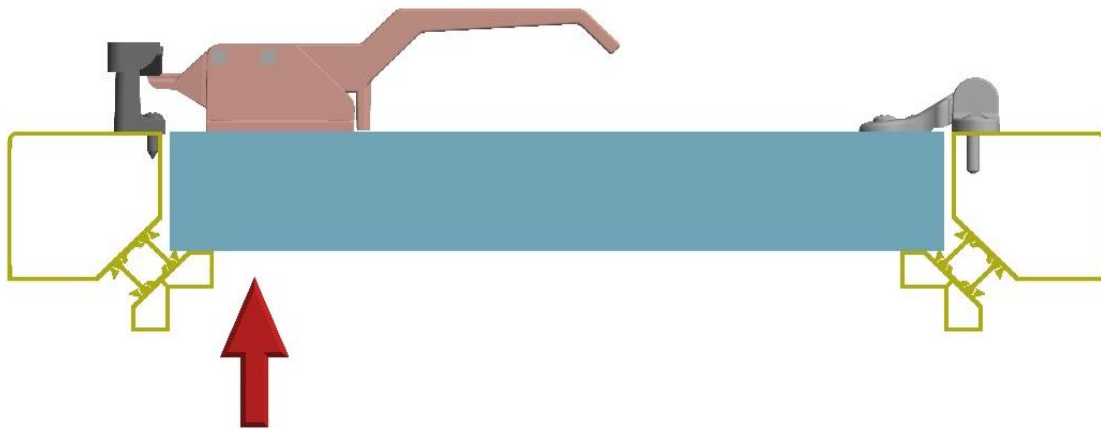
- Excellent air and water tightness;
- Easy to assemble;
- Product with durable performances



CONFIGURATIONS

- Available in two different versions: with and without key;
- Standard colour: black; also available in different colorations



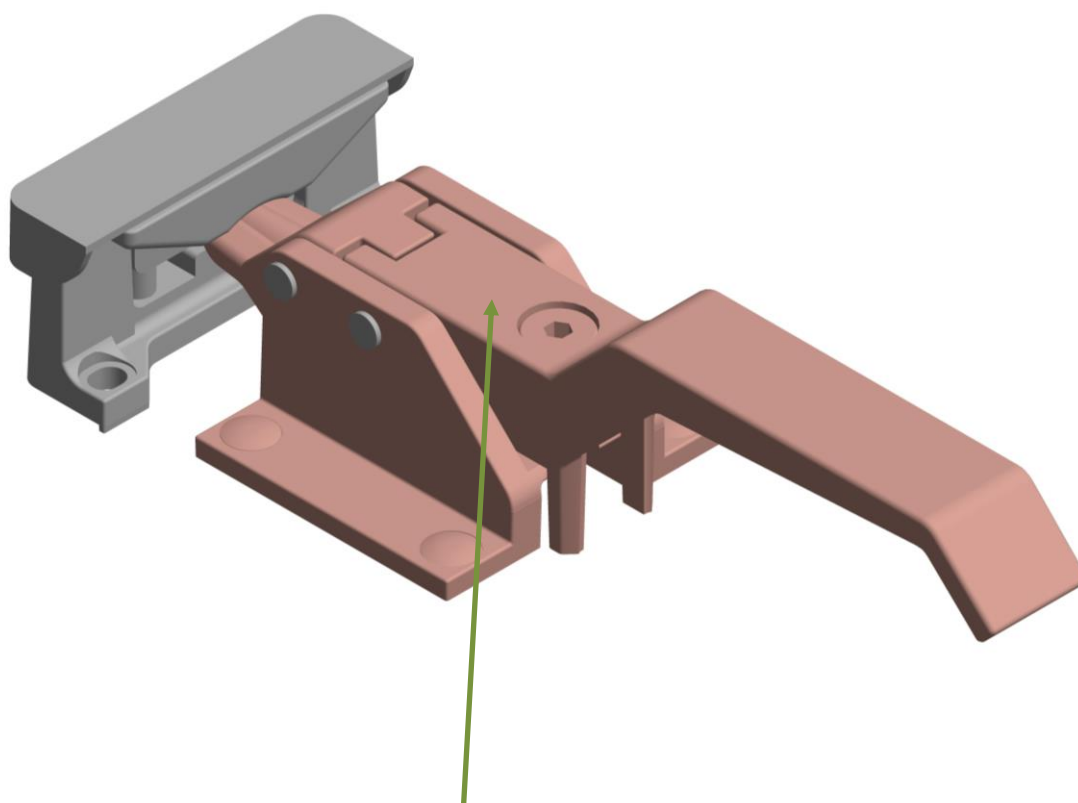


**HIGH PERFORMANCES FOR
THERMAL BREAK SYSTEMS**

Without internal components and the external locking system, this handle is the perfect product for customers that need the best performances in terms of thermal break

SECURITY FEATURE

The key version allows the operator to enter the unit and at the same time locking the door behind him, leaving it open and allowing him to exit the unit at any time



LEVERAGE MECHANISM

THANKS TO THE SPRING IN THE INTERNAL MECHANISM, THE HANDLE IS EASY TO OPEN/CLOSE, EVEN WITH HIGH LEVELS OF PRESSURE.