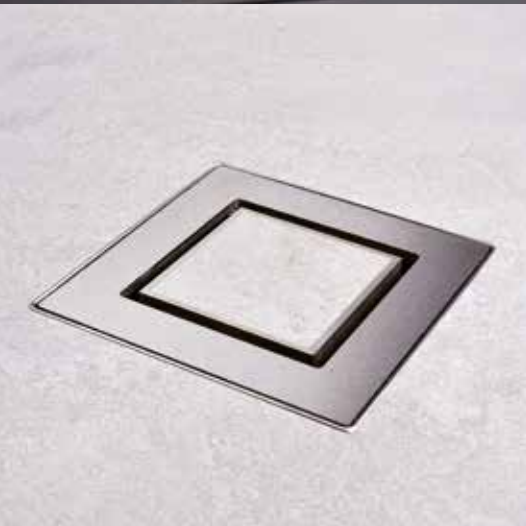


HL540(I) PRIMUS DRAIN. simple clever



Foto: HL540I

HL540(I) PRIMUS DRAIN shower trap



HL540(I) PRIMUS DRAIN. simple clever

Easy cleaning, individual design
and a masterpiece of the highest level

Since now 60 years the Austrian family company HL Hutterer & Lechner produces siphons, drains and traps. Latest result of this long-time experience: The shower trap HL540 „Primus Drain“. This is more or less an improved floor drain, especially designed for tiled and barrier-free showers. Main objective was set on simple installation for the plumber and an easy way of cleaning for the user of the shower. For exclusive bathrooms a special design version has been created: HL540i.

Keyword Installation:



The advantages of this new shower trap can be seen already, when installing it: Stable attachment on the screed by sound-disconnected stainless steel angles. The drain body is able to be adjusted in height by these angles, to produce an incline of the waste pipe.



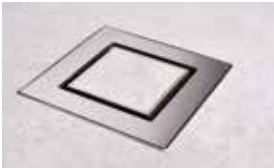
Next step is very easy: Because now already the screed may be filled in, no matter which height. It's no longer necessary to set the drain exactly on the upper level of the screed. Later changes of the height of the floor construction do not matter to the plumber: – the salient tube is cut with a saw blade or with a cutting disc, after the screed is dry.



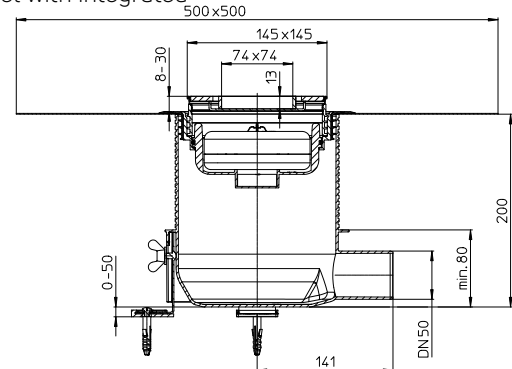
After that the sealing membrane is inserted into the drain body and may be connected to the hydro-insulation.



The frame is inserted, suitable for tiles from 8mm to 30mm, including tile glue. After finishing the floor the trap is inserted. The "Primus" trap itself is a so called „dry siphon": it prevents the upraising of sewage gas, also when the water in the siphon has evaporated. Of course the trap is removable, on the one hand for an easy cleaning, on the other hand it gives you a generous access to the waste pipe, if a congestion should occur. Just to make sure!



For elegant and upper class bathrooms and to reach a uniform design: HL540i –same technique, but grate made of brushed, massive stainless steel with integrated hollow for inserting the suitable tile.



Technical Information

Capacity: 0.8 l/s (HL540i: 0,6 l/s)

Installation height: min. 80 mm, max. 250 mm to upper level of screed

Frame: Stainless steel V4A, 145 x 145 mm

Grate: Stainless steel V2A, 138 x 138 mm

Height of water trap: 50 mm (HL540i: 40 mm)



HL Hutterer & Lechner GmbH
Brauhausgasse 3-5, A-2325 Himberg, Austria
T: +43 / (0)2235 / 862 91-0
F: +43 / (0)2235 / 862 91-31
office@hl.at
www.hl.at