



The new **DallDrain**
system family: "Covering all bases"
is really that straightforward

Contents

DallDrain system family

Details 4

DallDrain drain body 8

DallDrain Plan drain body 9

DallDrain vertical drain body 10

Select gratings 13

Individual gratings 14

Pure gratings 15

Product range: pre-assembled sets 16

Service 31

You can depend on the **DallDrain** system family

For more than half a century, Dallmer has been developing innovative drainage solutions. The aim is to create products which are not just first class in function, design and workmanship, but also in their handling.

As a family business with its roots in trade, we are familiar with your needs and your working day. At the construction site you have to think of many things – it's good to know that you can depend on the new DallDrain system family. It provides highly flexible point drainage with easy installation and everything that goes along with it.

With the DallDrain system family you have the choice between three drain bodies for every installation scenario. All drain bodies can be combined with different gratings. With the corresponding accessories, including fire and sound insulation solutions suitable for trade, we offer reliability and simple installation. And of course considerable time savings!

DallDrain is suitable for build-in heights of 55 mm or more, and provides a vertical drain body with combined outlet.

All drain bodies have a flexible, snap-fit sealing sleeve which is suitable for bonded waterproofing.

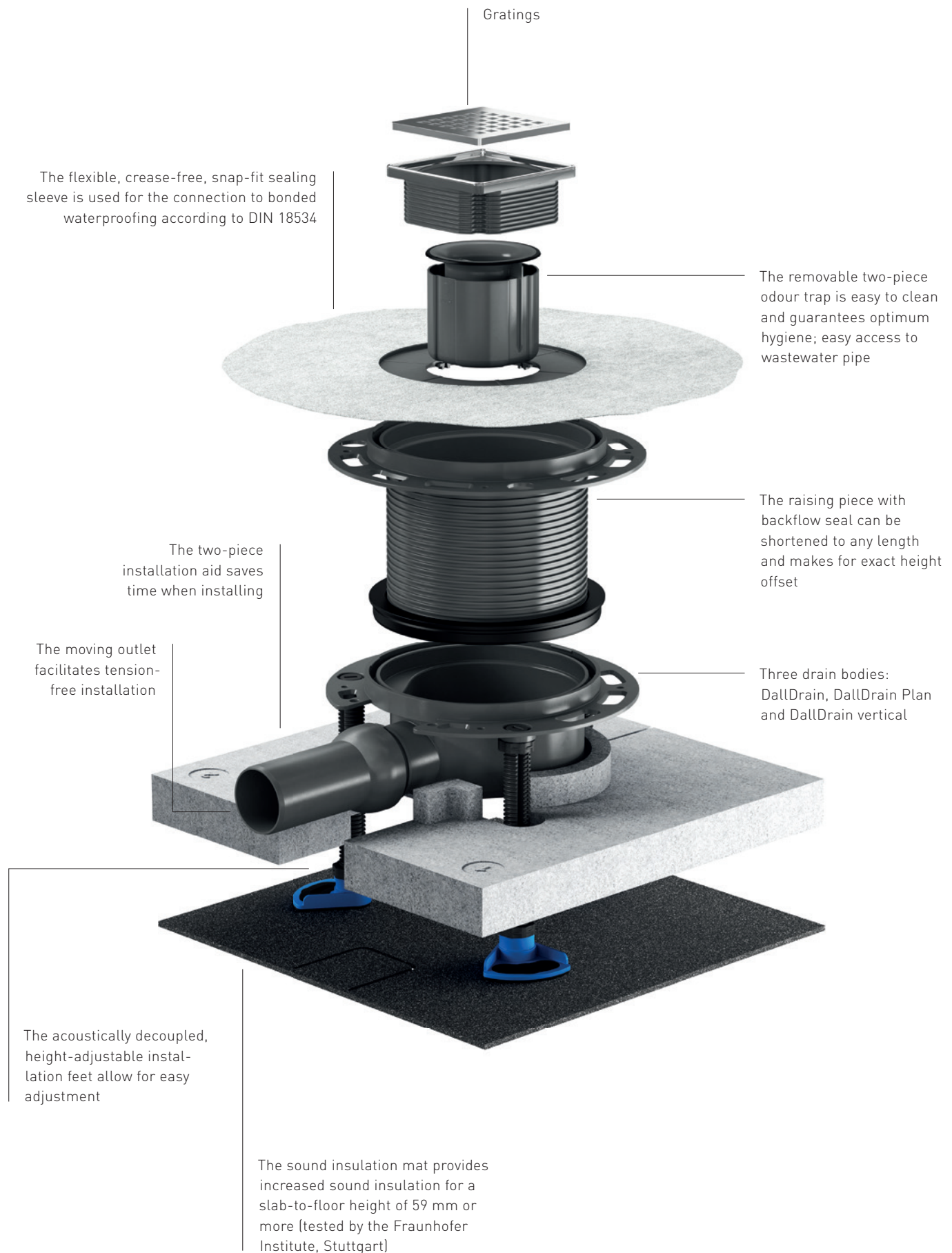
The installation feet for height adjustment and acoustic decoupling are a further benefit of DallDrain. With the sound insulation mat, you easily achieve the stipulations according to VDI 4100 and DIN 4109. The easily removable odour trap for quick cleaning is a further advantage.

And not least DallDrain provides a moving outlet for tension-free connection to the wastewater pipe and a new screed reinforcement element for low build-in heights to protect the outlet and floor construction.

DallDrain is suitable for use in new builds as well as for renovation projects. Complete sets are also available for the most common installation scenarios.

What else is important to us: DallDrain is supplied in modern environmentally friendly cardboard packaging which is completely free from plastic film.

The new **DallDrain** system family – The difference is in the detail



Compatibility with liquid seals and sheet seals

For the DallDrain system family, we provide a General Building Supervisory Authority Test Certificate on the compatibility with the liquid seals and sheet seals from a number of manufacturers

TESTED

Proven combinations:
fast and reliable

BOTAMENT[®]
SYSTEMBAUSTOFFE ■■■■

 **SCHÖNOX**[®]
A SIKI BRAND



Sopro

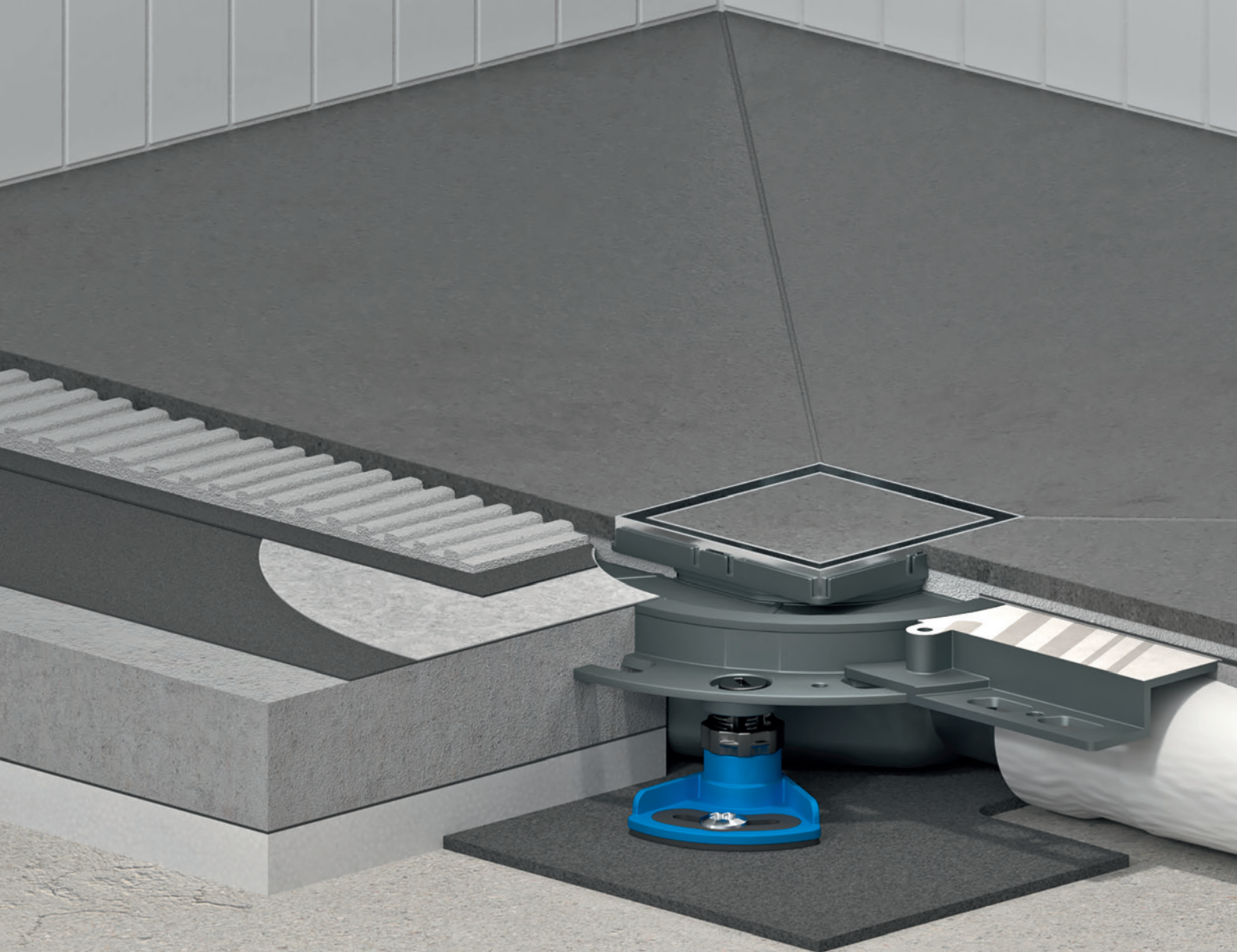
 **SCHOMBURG**



PCI[®]
Für Bau-Profis



You have the choice between DalIDrain, DalIDrain Plan with extra shallow height and DalIDrain vertical – that way, you have the perfect drainage solution for every installation scenario

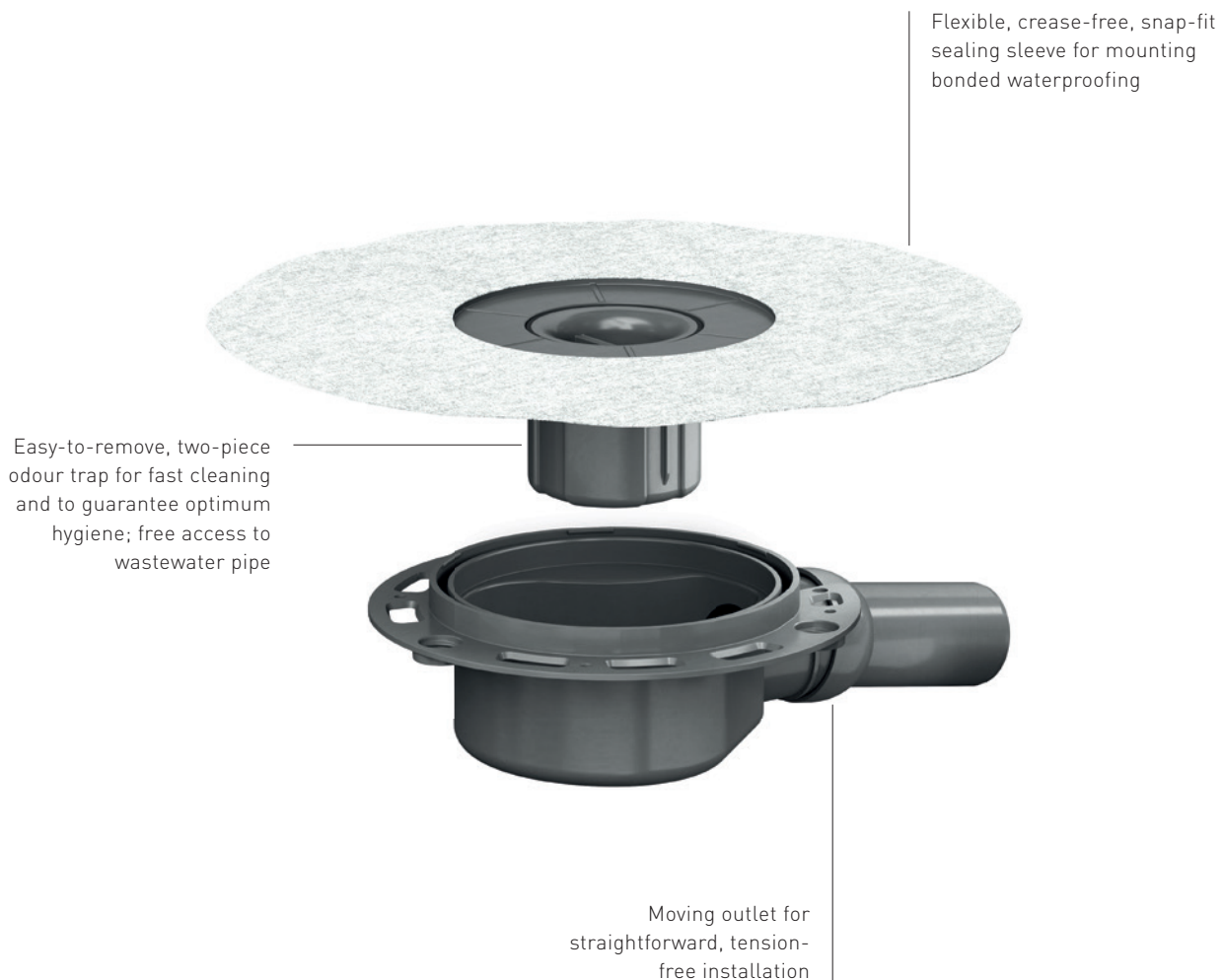




DallDrain drain body

Key features of the DallDrain drain body:

- Installation in the screed, can be freely positioned depending on use
- Drain body with removable odour trap and snap-fit sealing sleeve
- Odour trap height 50 mm (DIN EN 1253)
- For installation with Select, Individual and Pure gratings
- Outlet DN 50



Our service for you:
installation video

At youtube.com/dallmervideos, you will find a video which clearly shows just how easy it is to install DallDrain.

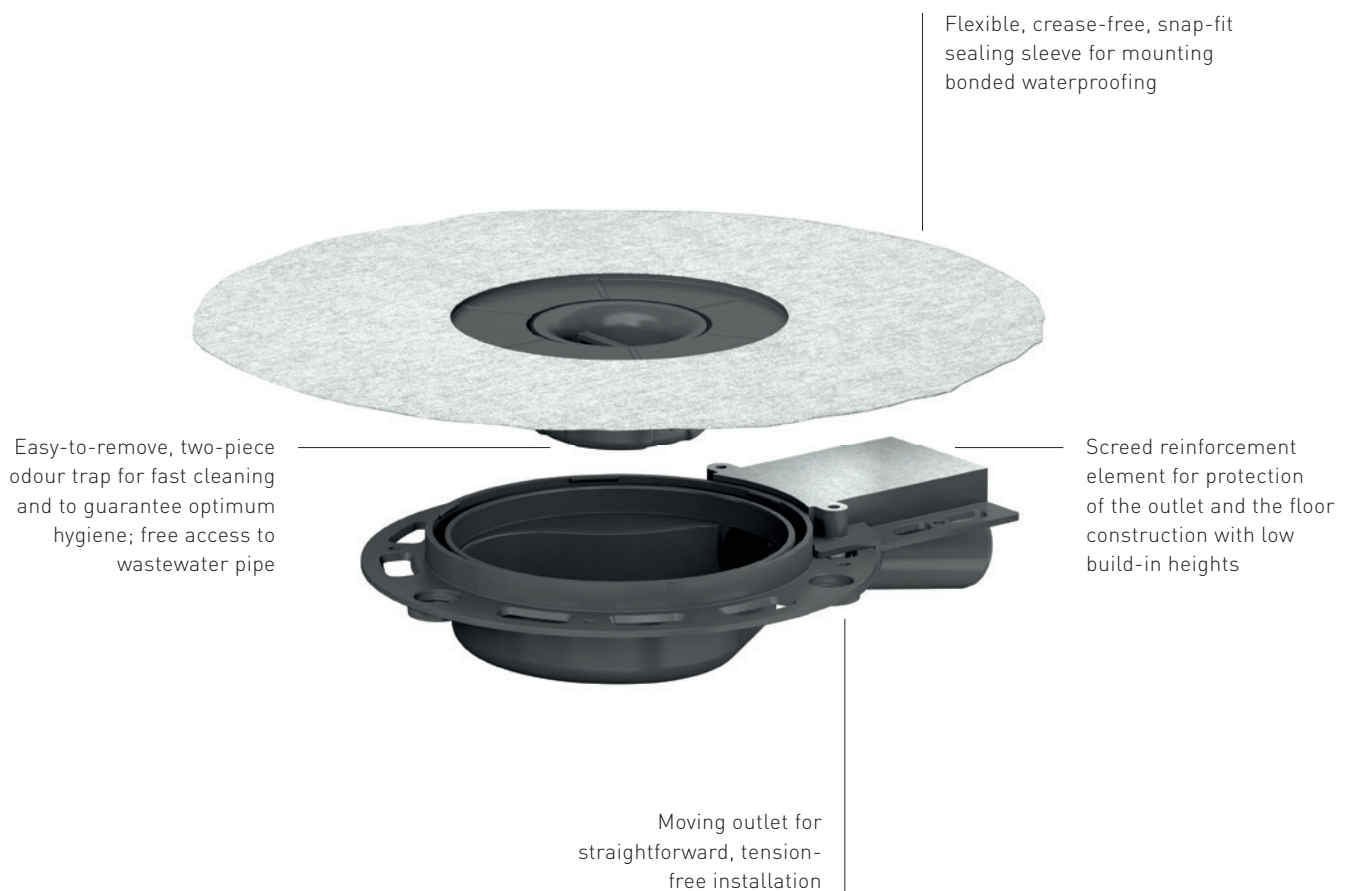
Technical information

Build-in height: 85 mm
Flow rate (10/20 mm water over grate),
measured with standard grating
100 × 100 mm: 0.65 / 0.92 l/s
Compatible with all gratings

DallDrain Plan drain body

Key features of the DallDrain Plan drain body:

- Installation in the screed, can be freely positioned depending on use
- Drain body with removable odour trap and snap-fit sealing sleeve
- For installation with Select, Individual and Pure gratings
- Outlet DN 40



Our service for you:
installation video

At youtube.com/dallmervideos, you will find a video which clearly shows just how easy it is to install DallDrain.

Technical information

Build-in height: 55 mm
Flow rate (10/20 mm water over grate),
measured with standard grating
100 × 100 mm: 0.47 / 0.54 l/s
Compatible with all gratings

DallDrain vertical drain body

Key features of the DallDrain vertical drain body:

- Installation in the screed, can be freely positioned depending on use
- Outlet DN 50
- Drain body with removable odour trap and snap-fit sealing sleeve
- For installation with Select, Individual and Pure gratings
- Odour trap height 50 mm (DIN EN 1253)



Our service for you:
installation video

At youtube.com/dallmervideos, you will find a video which clearly shows just how easy it is to install DallDrain.

Technical information

24 mm (47 mm with accessories
installation feet)

Flow rate (10/20 mm water over grate),
measured with standard grating

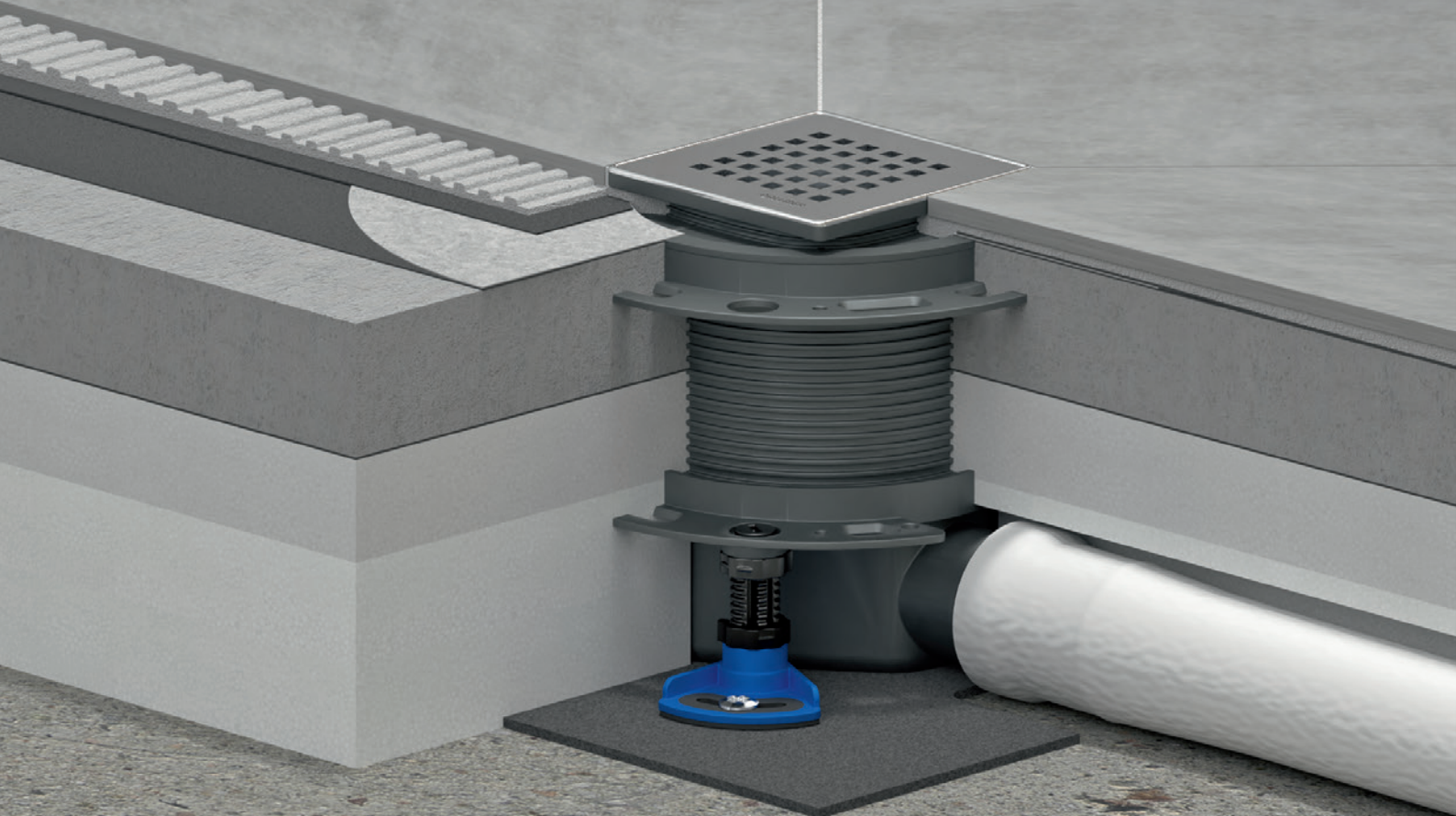
100 × 100 mm: 0.72 / 1.30 l/s

Compatible with all gratings

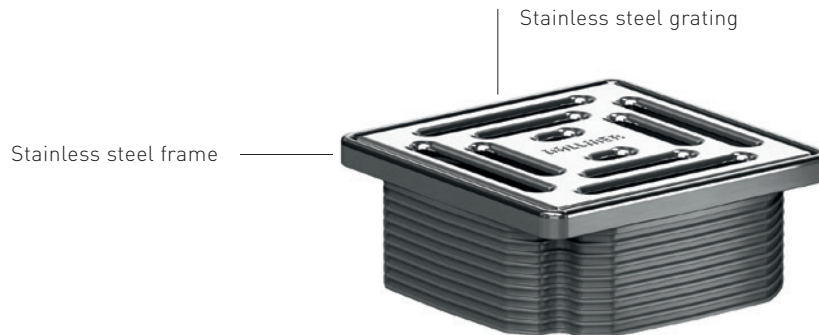


DaltDrain drain body, shown with Individual grating attachment, 100 × 100 mm

Choose from different gratings –
the exclusive Select design with stainless steel frame,
the tileable Individual version or the
budget-friendly Pure variant with plastic frame



Select gratings



Select raises the bar

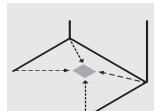
Visual elegance, combined with tried-and-tested technology; that is Select. Both the top-mounted frame and the corresponding grill are made of stainless steel.

55 mm
85 mm

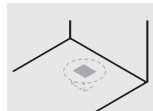
Build-in height



Very easy to clean



Four
sloped side sections

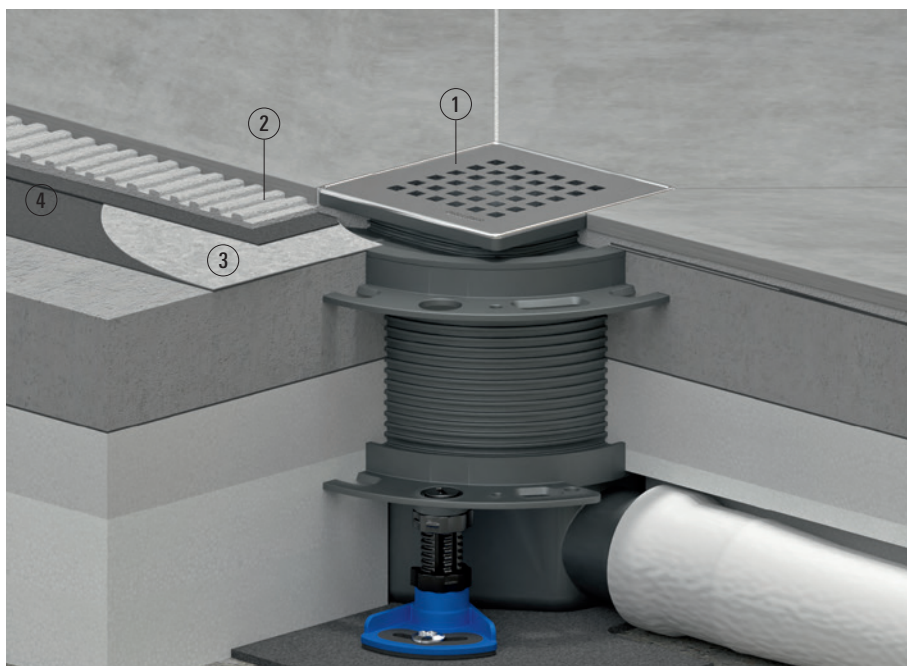


Position



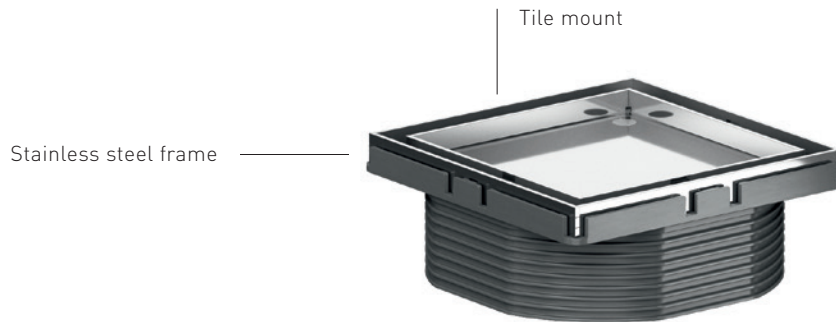
Our service for you:
installation video

At youtube.com/dallmervideos, you will find a video which clearly shows just how easy it is to install DallDrain.



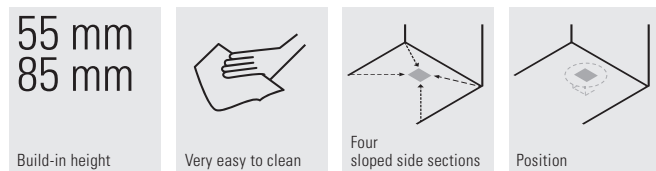
1. Stainless steel Select Quadra designer grating
2. Tile adhesive
3. DallDrain sealing sleeve
4. Bonded waterproofing

Individual gratings



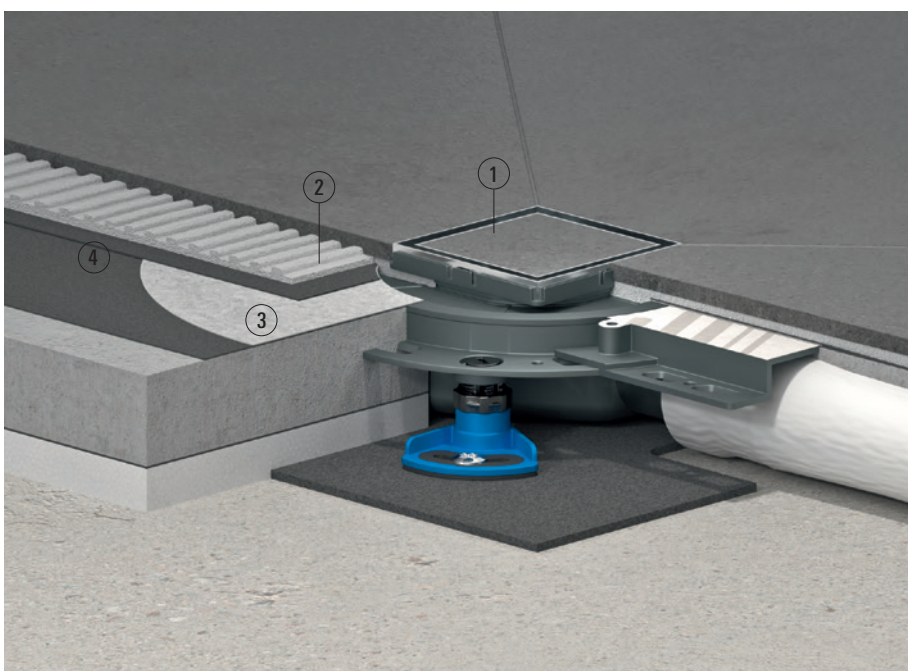
The grating which is almost invisible

On the tileable Individual version, the outlet merges right into the floor covering. There are thus no limits to design flexibility.



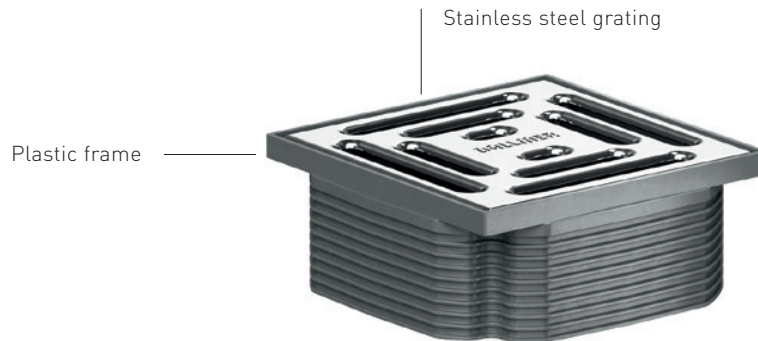
Our service for you:
installation video

At youtube.com/dallmervideos, you will find a video which clearly shows just how easy it is to install DallDrain.



1. Tileable Individual grating
2. Tile adhesive
3. DallDrain sealing sleeve
4. Bonded waterproofing

Pure gratings



Pure – the budget-friendly alternative

On the budget-friendly Pure version, the grating frame is made of plastic. The corresponding grating is made of stainless steel.

55 mm
85 mm

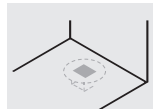
Build-in height



Very easy to clean



Four
sloped side sections

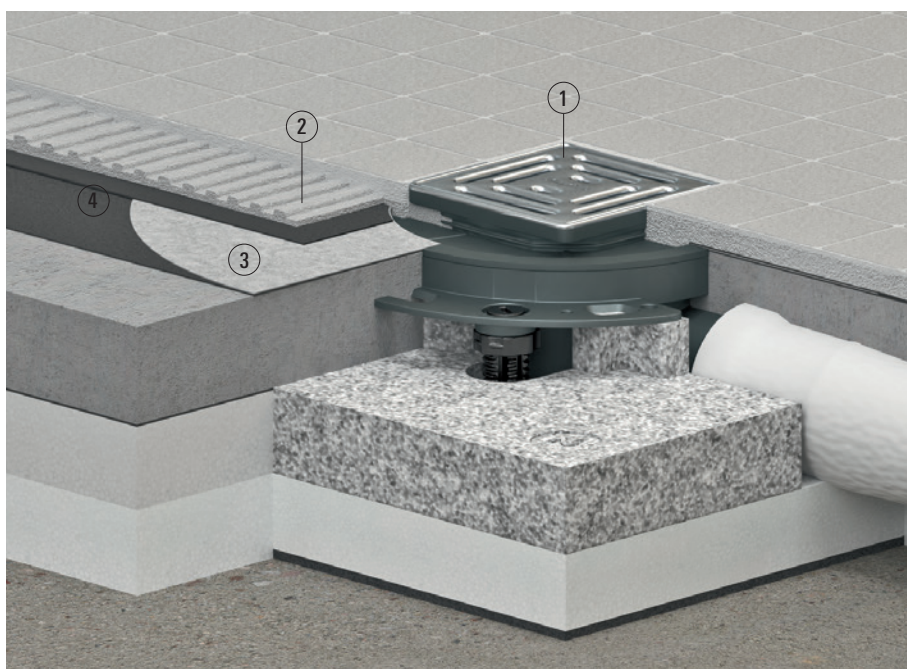


Position





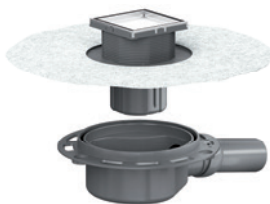



Our service for you:
installation video

At youtube.com/dallmervideos, you will find a video which clearly shows just how easy it is to install DallDrain.



1. Stainless steel grating
2. Tile adhesive
3. DallDrain sealing sleeve
4. Bonded waterproofing

The DalIDrain system family: pre-assembled sets

	<p>Floor drain DalIDrain with trap insert conforming to DIN EN 1253</p>	<p>Floor drain DalIDrain Plan flat design for renovation and modernisation</p>																														
including grating DalIDrain Select	<p>Floor drain DalIDrain Select OM</p>  <table> <tr> <td>DN</td><td colspan="2">DN 50</td></tr> <tr> <td>BUILT-IN HEIGHT</td><td colspan="2">85 mm</td></tr> <tr> <td>FLOW RATE (10/20 mm water over grate)</td><td colspan="2">0.65/0.92 l/s</td></tr> <tr> <td>DIMENSION</td><td>100 x 100 mm</td><td>120 x 120 mm</td></tr> <tr> <td>PART NO.</td><td>517555</td><td>517579</td></tr> </table>	DN	DN 50		BUILT-IN HEIGHT	85 mm		FLOW RATE (10/20 mm water over grate)	0.65/0.92 l/s		DIMENSION	100 x 100 mm	120 x 120 mm	PART NO.	517555	517579	<p>Floor drain DalIDrain Select Plan OM</p>  <table> <tr> <td>DN</td><td colspan="2">DN 40</td></tr> <tr> <td>BUILT-IN HEIGHT</td><td colspan="2">55 mm</td></tr> <tr> <td>FLOW RATE (10/20 mm water over grate)</td><td colspan="2">0.47/0.54 l/s</td></tr> <tr> <td>DIMENSION</td><td>100 x 100 mm</td><td>120 x 120 mm</td></tr> <tr> <td>PART NO.</td><td>517593</td><td>517616</td></tr> </table>	DN	DN 40		BUILT-IN HEIGHT	55 mm		FLOW RATE (10/20 mm water over grate)	0.47/0.54 l/s		DIMENSION	100 x 100 mm	120 x 120 mm	PART NO.	517593	517616
DN	DN 50																															
BUILT-IN HEIGHT	85 mm																															
FLOW RATE (10/20 mm water over grate)	0.65/0.92 l/s																															
DIMENSION	100 x 100 mm	120 x 120 mm																														
PART NO.	517555	517579																														
DN	DN 40																															
BUILT-IN HEIGHT	55 mm																															
FLOW RATE (10/20 mm water over grate)	0.47/0.54 l/s																															
DIMENSION	100 x 100 mm	120 x 120 mm																														
PART NO.	517593	517616																														
including grating DalIDrain Individual	<p>Floor drain DalIDrain Individual OM</p>  <table> <tr> <td>DN</td><td colspan="2">DN 50</td></tr> <tr> <td>BUILT-IN HEIGHT</td><td colspan="2">85 mm</td></tr> <tr> <td>FLOW RATE (10/20 mm water over grate)</td><td colspan="2">0.57/0.68 l/s</td></tr> <tr> <td>DIMENSION</td><td colspan="2">100 x 100 mm</td></tr> <tr> <td>PART NO.</td><td colspan="2">517753</td></tr> </table>	DN	DN 50		BUILT-IN HEIGHT	85 mm		FLOW RATE (10/20 mm water over grate)	0.57/0.68 l/s		DIMENSION	100 x 100 mm		PART NO.	517753		<p>Floor drain DalIDrain Individual Plan OM</p>  <table> <tr> <td>DN</td><td colspan="2">DN 40</td></tr> <tr> <td>BUILT-IN HEIGHT</td><td colspan="2">55 mm</td></tr> <tr> <td>FLOW RATE (10/20 mm water over grate)</td><td colspan="2">0.46/0.52 l/s</td></tr> <tr> <td>DIMENSION</td><td colspan="2">100 x 100 mm</td></tr> <tr> <td>PART NO.</td><td colspan="2">517760</td></tr> </table>	DN	DN 40		BUILT-IN HEIGHT	55 mm		FLOW RATE (10/20 mm water over grate)	0.46/0.52 l/s		DIMENSION	100 x 100 mm		PART NO.	517760	
DN	DN 50																															
BUILT-IN HEIGHT	85 mm																															
FLOW RATE (10/20 mm water over grate)	0.57/0.68 l/s																															
DIMENSION	100 x 100 mm																															
PART NO.	517753																															
DN	DN 40																															
BUILT-IN HEIGHT	55 mm																															
FLOW RATE (10/20 mm water over grate)	0.46/0.52 l/s																															
DIMENSION	100 x 100 mm																															
PART NO.	517760																															
including grating DalIDrain Pure	<p>Floor drain DalIDrain Pure OM</p>  <table> <tr> <td>DN</td><td colspan="2">DN 50</td></tr> <tr> <td>BUILT-IN HEIGHT</td><td colspan="2">85 mm</td></tr> <tr> <td>FLOW RATE (10/20 mm water over grate)</td><td colspan="2">0.65/0.92 l/s</td></tr> <tr> <td>DIMENSION</td><td>100 x 100 mm</td><td>120 x 120 mm</td></tr> <tr> <td>PART NO.</td><td>517548</td><td>517562</td></tr> </table>	DN	DN 50		BUILT-IN HEIGHT	85 mm		FLOW RATE (10/20 mm water over grate)	0.65/0.92 l/s		DIMENSION	100 x 100 mm	120 x 120 mm	PART NO.	517548	517562	<p>Floor drain DalIDrain Pure Plan OM</p>  <table> <tr> <td>DN</td><td colspan="2">DN 40</td></tr> <tr> <td>BUILT-IN HEIGHT</td><td colspan="2">55 mm</td></tr> <tr> <td>FLOW RATE (10/20 mm water over grate)</td><td colspan="2">0.47/0.54 l/s</td></tr> <tr> <td>DIMENSION</td><td>100 x 100 mm</td><td>120 x 120 mm</td></tr> <tr> <td>PART NO.</td><td>517586</td><td>517609</td></tr> </table>	DN	DN 40		BUILT-IN HEIGHT	55 mm		FLOW RATE (10/20 mm water over grate)	0.47/0.54 l/s		DIMENSION	100 x 100 mm	120 x 120 mm	PART NO.	517586	517609
DN	DN 50																															
BUILT-IN HEIGHT	85 mm																															
FLOW RATE (10/20 mm water over grate)	0.65/0.92 l/s																															
DIMENSION	100 x 100 mm	120 x 120 mm																														
PART NO.	517548	517562																														
DN	DN 40																															
BUILT-IN HEIGHT	55 mm																															
FLOW RATE (10/20 mm water over grate)	0.47/0.54 l/s																															
DIMENSION	100 x 100 mm	120 x 120 mm																														
PART NO.	517586	517609																														

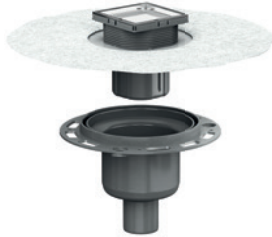
Floor drain DalIDrain vertical
for property construction, trap insert
conforming to DIN EN 1253

Floor drain DalIDrain Select vertical OM



DN	DN 50 / DN 100	
BUILT-IN HEIGHT	24 mm (47 mm with accessories installation feet)	
FLOW RATE <small>(10/20 mm water over grate)</small>	0.72 / 1.30 l/s	
DIMENSION	100 x 100 mm	120 x 120 mm
PART NO.	517647	517661

Floor drain DalIDrain Individual vertical OM



DN	DN 50 / DN 100	
BUILT-IN HEIGHT	24 mm (47 mm with accessories installation feet)	
FLOW RATE <small>(10/20 mm water over grate)</small>	0.72 / 1.30 l/s	
DIMENSION	100 x 100 mm	
PART NO.	517678	

Floor drain DalIDrain Pure vertical OM



DN	DN 50 / DN 100	
BUILT-IN HEIGHT	24 mm (47 mm with accessories installation feet)	
FLOW RATE <small>(10/20 mm water over grate)</small>	0.72 / 1.30 l/s	
DIMENSION	100 x 100 mm	120 x 120 mm
PART NO.	517685	517692

DalIDrain Select floor drains

DALLMER floor drain DalIDrain Select OM

conforming to DIN EN 1253
Floor drain including grating DalIDrain Select with stainless steel grate in stainless steel frame.
Side outlet DN 50, with ball joint, adjustable from 0 – 15 degrees.

SPECIFICATION

- Stainless steel grate and frame
- Integrated screed anchoring
- Flexible, click-in sealing sleeve for secure connection to bonded and sheet waterproofing conforming to DIN 18534
- Fully removable, two-piece trap insert and rodding eye, 50 mm water seal (conforming to DIN EN 1253))
- Temporary blanking plate
- Spigot can be shortened for floorings 10 – 36 mm (including adhesive)

MATERIAL

Polypropylene drain body and outlet, highly impact-resistant; 1.4301 stainless steel grate, load class K 3 (300 kg); spigot in ABS, frame in 1.4301 stainless steel

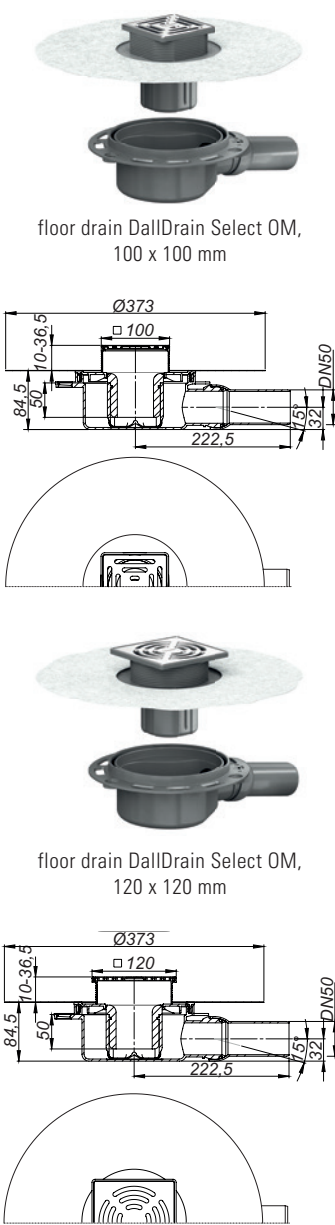
- ▶ floor drain DalIDrain Select OM, 100 x 100 mm
Pre-assembled set consisting of parts no. 517265 + 517210.
Grating with positioning aid laterally adjustable + / - 2.5 mm.
- ▶ floor drain DalIDrain Select OM, 120 x 120 mm
Pre-assembled set consisting of parts no. 517296 + 517210.
Grating with positioning aid laterally adjustable + / - 9.5 mm.

FLOW RATE TESTED TO DIN EN 1253 (with 10/20 mm water over grate)

	Required	Dallmer
DN 50	0.8 l/s	0.65 / 0.92 l/s

ITEM	DN	DIMENSION	PART NO.
Floor drain DalIDrain Select OM	DN 50	100 x 100 mm	517555
Floor drain DalIDrain Select OM	DN 50	120 x 120 mm	517579

Can be used with sound insulation mat DalIDrain (part no. 517326) and mounting aid DalIDrain (part no. 517319).
Can be connected to British standard pipework with adaptor part No. 880727.



DallDrain Select floor drains

DALLMER floor drain DallDrain Select Plan OM

Floor drain including grating DallDrain Select with stainless steel grate in stainless steel frame.
Side outlet DN 40, with ball joint, adjustable from 0 – 15 degrees.

SPECIFICATION

- Stainless steel grate and frame
- Integrated screed anchoring
- Flexible, click-in sealing sleeve for secure connection to bonded and sheet waterproofing conforming to DIN 18534
- Fully removable, two-piece trap insert and rodding eye, 22 mm water seal (deviating to DIN EN 1253)
- Temporary blanking plate
- Spigot can be shortened for floorings 10 – 36 mm (including adhesive)
- Screed reinforcement element for protection of the outlet

MATERIAL

Polypropylene drain body, highly impact-resistant; polyethylene outlet, weldable;
1.4301 stainless steel grating, load class K 3 (300 kg); spigot in ABS,
frame in 1.4301 stainless steel

- ▶ **floor drain DallDrain Select Plan OM, 100 x 100 mm**
Pre-assembled set consisting of parts no. 517265 + 517227.
Grating with positioning aid laterally adjustable + / - 2.5 mm.
- ▶ **floor drain DallDrain Select Plan OM, 120 x 120 mm**
Pre-assembled set consisting of parts no. 517296 + 517227.
Grating with positioning aid laterally adjustable + / - 9.5 mm.

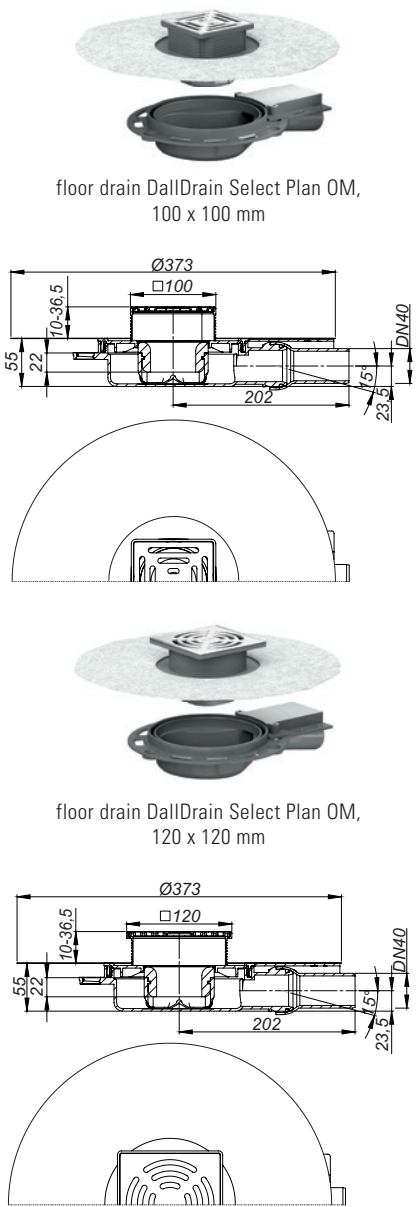
FLOW RATE TESTED TO DIN EN 1253 TAB. 3,
(with 10/20 mm water over grate), conforming to DIN EN 274

	Required	Dallmer
DN 40	0.4 l/s	0.47 / 0.54 l/s

ITEM	DN	DIMENSION	PART NO.
Floor drain DallDrain Select Plan OM	DN 40	100 x 100 mm	517593
Floor drain DallDrain Select Plan OM	DN 40	120 x 120 mm	517616

Can be used with sound insulation mat DallDrain (art. no. 517326) and
mounting aid DallDrain Plan (art. no. 517302).

Can be connected to British standard pipework with adaptor part No. 880734.



DalIDrain Select floor drains

DALLMER floor drain DalIDrain Select vertical OM

conforming to DIN EN 1253
Floor drain including grating DalIDrain Select with stainless steel grate in stainless steel frame.
Outlet DN 50 / DN 100 vertical.

SPECIFICATION

- Stainless steel grate and frame
- Integrated screed anchoring
- Flexible, click-in sealing sleeve for secure connection to bonded and sheet waterproofing conforming to DIN 18534
- Fully removable, two-piece trap insert and rodding eye, 50 mm water seal (conforming to DIN EN 1253)
- Temporary blanking plate
- Spigot can be shortened for floorings 10 – 36 mm (including adhesive)



MATERIAL


Polypropylene drain body and outlet, highly impact-resistant; 1.4301 stainless steel grate, load class K 3 (300 kg); spigot in ABS, frame in 1.4301 stainless steel

- floor drain DalIDrain Select vertical OM, 100 x 100 mm
Pre-assembled set consisting of parts no. 517265 + 517234.
Grating with positioning aid laterally adjustable + / - 2.5 mm.
- floor drain DalIDrain Select vertical OM, 120 x 120 mm
Pre-assembled set consisting of parts no. 517296 + 517234.
Grating with positioning aid laterally adjustable + / - 9.5 mm.

FLOW RATE TESTED TO DIN EN 1253 (with 10/20 mm water over grate)

	Required	Dallmer
DN 50	0.8 l/s	0.72 / 1.30 l/s
DN 100	0.8 l/s	0.72 / 1.30 l/s

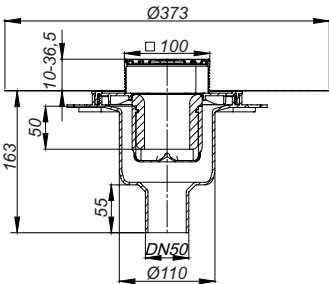
ITEM	DN	DIMENSION	PART NO.
 Floor drain DalIDrain Select vertical OM	DN 50 / DN 100	100 x 100 mm	517647
 Floor drain DalIDrain Select vertical OM	DN 50 / DN 100	120 x 120 mm	517661

-  Fire and sound-insulating collar - installation kit 2(Part No. 515025) or fire protection kit 12 (Part No. 515438) applicable.

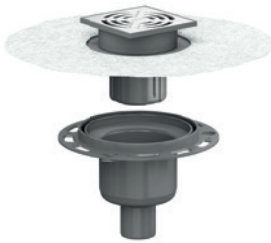
Can be connected to British standard pipework with adaptor part No. 880727.



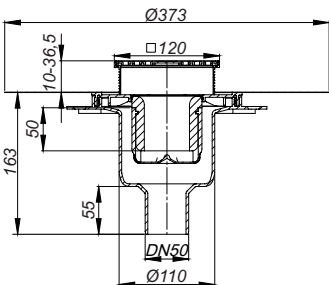
floor drain DalIDrain Select vertical OM,
100 x 100 mm



core drill: d: 130 mm
core drill for
fire and sound-insulating collar 2: d: 157 – 177 mm
core drill for
fire protection kit 12: d: 120 mm



floor drain DalIDrain Select vertical OM,
120 x 120 mm



core drill: d: 130 mm
core drill for
fire and sound-insulating collar 2: d: 157 – 177 mm
core drill for
fire protection kit 12: d: 120 mm

DallDrain Individual floor drains

DALLMER floor drain DallDrain Individual OM

conforming to DIN EN 1253

Floor drain including grating DallDrain Individual with stainless steel grating frame for tiling with customers floor finish. Side outlet DN 50, with ball joint, adjustable from 0 – 15 degrees.

SPECIFICATION

- Stainless steel tile holder and frame
- Integrated screed anchoring
- Flexible, click-in sealing sleeve for secure connection to bonded and sheet waterproofing conforming to DIN 18534
- Fully removable, two-piece trap insert and rodding eye, 50 mm water seal (conforming to DIN EN 1253)
- Temporary blanking plate
- Spigot can be shortened for floorings 10 – 36 mm (including adhesive)

MATERIAL

Polypropylene drain body and outlet, highly impact-resistant; 1.4301 stainless steel tile holder; spigot in ABS, frame in 1.4301 stainless steel

- floor drain DallDrain Individual OM, 100 x 100 mm
Pre-assembled set consisting of parts no. 517272 + 517210.
Grating with positioning aid laterally adjustable + / - 3.5 mm.

FLOW RATE TESTED TO DIN EN 1253 TAB. 3,
(with 10 / 20 mm water over grate), conforming to DIN EN 274

	Required	Dallmer
DN 50	0.4 l/s	0.57 / 0.68 l/s

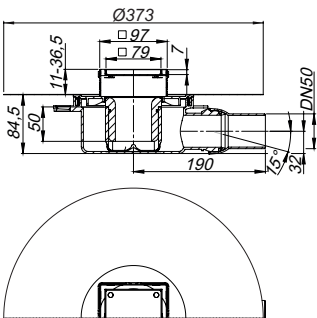
ITEM	DN	DIMENSION	PART NO.
Floor drain DallDrain Individual OM	DN 50	100 x 100 mm	517753

Can be used with sound insulation mat DallDrain (part no. 517326) and mounting aid DallDrain (part no. 517319).

Can be connected to British standard pipework with adaptor part No. 880727.



floor drain DallDrain Individual OM



DalIDrain Individual floor drains

DALLMER floor drain DalIDrain Individual Plan OM

Floor drain including grating DalIDrain Individual with stainless steel grating frame for tiling with customers floor finish. Side outlet DN 40, with ball joint, adjustable from 0 – 15 degrees.

SPECIFICATION

- Stainless steel tile holder and frame
- Integrated screed anchoring
- Flexible, click-in sealing sleeve for secure connection to bonded and sheet waterproofing conforming to DIN 18534
- Fully removable, two-piece trap insert and rodding eye, 22 mm water seal (deviating to DIN EN 1253)
- Temporary blanking plate
- Spigot can be shortened for floorings 10 – 36 mm (including adhesive)
- Screed reinforcement element for protection of the outlet

MATERIAL

Polypropylene drain body, highly impact-resistant; polyethylene outlet, weldable; 1.4301 stainless steel tile holder; spigot in ABS, frame in 1.4301 stainless steel

- floor drain DalIDrain Individual Plan OM, 100 x 100 mm
Pre-assembled set consisting of parts no. 517272 + 517227.
Grating with positioning aid laterally adjustable + / - 3.5 mm.

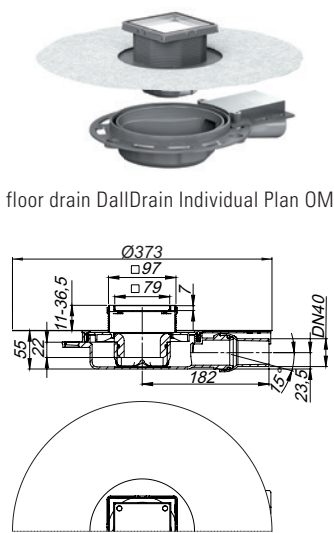
FLOW RATE TESTED TO DIN EN 1253 TAB. 3,
(with 10/20 mm water over grate), conforming to DIN EN 274

	Required	Dallmer
DN 40	0.4 l/s	0.46 / 0.52 l/s

ITEM	DN	DIMENSION	PART NO.
Floor drain DalIDrain Individual Plan OM	DN 40	100 x 100 mm	517760

Can be used with sound insulation mat DalIDrain (part no. 517326) and mounting aid DalIDrain Plan (part no. 517302).

Can be connected to British standard pipework with adaptor part No. 880734.



floor drain DalIDrain Individual Plan OM

DallDrain Individual floor drains

DALLMER floor drain DallDrain Individual vertical OM

conforming to DIN EN 1253

Floor drain including grating DallDrain Individual with stainless steel grating frame for tiling with customers floor finish. Outlet DN 50 / DN 100 vertical.

SPECIFICATION

- Stainless steel tile holder and frame
- Integrated screed anchoring
- Flexible, click-in sealing sleeve for secure connection to bonded and sheet waterproofing conforming to DIN 18534
- Fully removable, two-piece trap insert and rodding eye, 50 mm water seal (conforming to DIN EN 1253)
- Temporary blanking plate
- Spigot can be shortened for floorings 10 – 36 mm (including adhesive)

MATERIAL

Polypropylene drain body and outlet, highly impact-resistant; 1.4301 stainless steel tile holder; spigot in ABS, frame in 1.4301 stainless steel


► floor drain DallDrain Individual vertical OM, 100 x 100 mm


Pre-assembled set consisting of parts no. 517272 + 517234.

Grating with positioning aid laterally adjustable + / - 3.5 mm.

FLOW RATE TESTED TO DIN EN 1253 (with 10 / 20 mm water over grate)

	Required	Dallmer
DN 50	0.8 l/s	0.72 / 1.30 l/s
DN 100	0.8 l/s	0.72 / 1.30 l/s

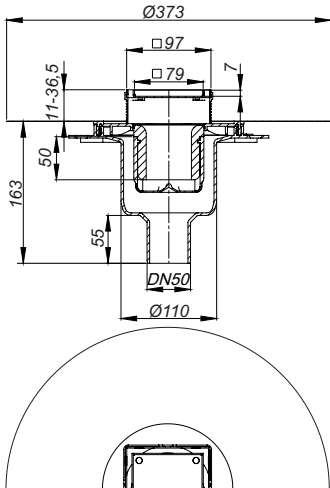
ITEM	DN	DIMENSION	PART NO.
 Floor drain DallDrain Individual vertical OM	DN 50 / DN 100	100 x 100 mm	517678

 Fire and sound-insulating collar - installation kit 2 (Part No. 515025) or fire protection kit 12 (Part No. 515438) applicable.

Can be connected to British standard pipework with adaptor part No. 880727.



floor drain DallDrain Individual vertical OM



core drill: d: 130 mm

core drill for

fire and sound-insulating collar 2: d: 157 – 177 mm

core drill for

fire protection kit 12: d: 120 mm

DalIDrain Pure floor drains

DALLMER floor drain DalIDrain Pure OM

conforming to DIN EN 1253
Floor drain including grating DalIDrain Pure with stainless steel grate in plastic frame.
Side outlet DN 50, with ball joint, adjustable from 0 – 15 degrees.

SPECIFICATION

- Stainless steel grate, plastic frame
- Integrated screed anchoring
- Flexible, click-in sealing sleeve for secure connection to bonded and sheet waterproofing conforming to DIN 18534
- Fully removable, two-piece trap insert and rodding eye, 50 mm water seal (conforming to DIN EN 1253)
- Temporary blanking plate
- Spigot can be shortened for floorings 10 – 36 mm (including adhesive)

MATERIAL

Polypropylene drain body and outlet, highly impact-resistant;
1.4301 stainless steel grate, load class K 3 (300 kg); spigot and frame in ABS

- ▶ **floor drain DalIDrain Pure OM, 100 x 100 mm**
Pre-assembled set consisting of parts no. 517258 + 517210.
Grating with positioning aid laterally adjustable + / - 2.5 mm.
- ▶ **floor drain DalIDrain Pure OM, 120 x 120 mm**
Pre-assembled set consisting of parts no. 517289 + 517210.
Grating with positioning aid laterally adjustable + / - 9.5 mm.

FLOW RATE TESTED TO DIN EN 1253 (with 10/20 mm water over grate)

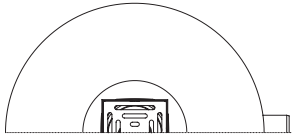
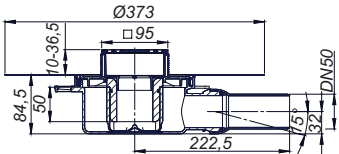
	Required	Dallmer
DN 50	0.8 l/s	0.65 / 0.92 l/s

ITEM	DN	DIMENSION	PART NO.
Floor drain DalIDrain Pure OM	DN 50	100 x 100 mm	517548
Floor drain DalIDrain Pure OM	DN 50	120 x 120 mm	517562

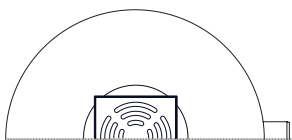
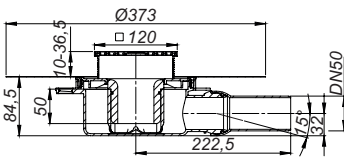
Can be used with sound insulation mat DalIDrain (part no. 517326) and mounting aid DalIDrain (part no. 517319).
Can be connected to British standard pipework with adaptor part No. 880727.



floor drain DalIDrain Pure OM,
100 x 100 mm



floor drain DalIDrain Pure OM,
120 x 120 mm



DallDrain Pure floor drains

DALLMER floor drain DallDrain Pure Plan OM

Floor drain including grating DallDrain Pure with stainless steel grate in plastic frame.
Side outlet DN 40, with ball joint, adjustable from 0 – 15 degrees.

SPECIFICATION

- Stainless steel grate, plastic frame
- Integrated screed anchoring
- Flexible, click-in sealing sleeve for secure connection to bonded and sheet waterproofing conforming to DIN 18534
- Fully removable, two-piece trap insert and rodding eye, 22 mm water seal (deviating to DIN EN 1253)
- Temporary blanking plate
- Spigot can be shortened for floorings 10 – 36 mm (including adhesive)
- Screed reinforcement element for protection of the outlet

MATERIAL

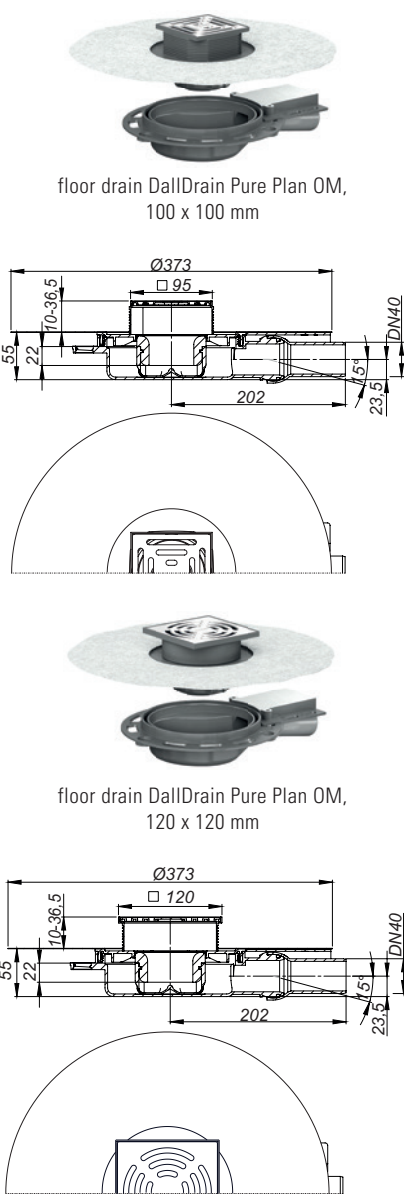
Polypropylene drain body, highly impact-resistant; polyethylene outlet, weldable;
1.4301 stainless steel grate, load class K 3 (300 kg); spigot and frame in ABS

- floor drain DallDrain Pure Plan OM, 100 x 100 mm
Pre-assembled set consisting of parts no. 517258 + 517227.
Grating with positioning aid laterally adjustable + / - 2.5 mm.
- floor drain DallDrain Pure Plan OM, 120 x 120 mm
Pre-assembled set consisting of parts no. 517289 + 517227.
Grating with positioning aid laterally adjustable + / - 9.5 mm.

FLOW RATE TESTED TO DIN EN 1253 TAB. 3, (with 10/20 mm water over grate), conforming to DIN EN 274		
	Required	Dallmer
DN 40	0.4 l/s	0.47 / 0.54 l/s

ITEM	DN	DIMENSION	PART NO.
Floor drain DallDrain Pure Plan OM	DN 40	100 x 100 mm	517586
Floor drain DallDrain Pure Plan OM	DN 40	120 x 120 mm	517609

Can be used with sound insulation mat DallDrain (part no. 517326) and mounting aid DallDrain Plan (part no. 517302).
Can be connected to British standard pipework with adaptor part No. 880734.



DalIDrain Pure floor drains

DALLMER floor drain DalIDrain Pure vertical OM

conforming to DIN EN 1253
 Floor drain including grating DalIDrain Pure with stainless steel grate in ABS frame.
 Outlet DN 50 / DN 100 vertical.

SPECIFICATION

- Stainless steel grate, plastic frame
- Integrated screed anchoring
- Flexible, click-in sealing sleeve for secure connection to bonded and sheet waterproofing conforming to DIN 18534
- Fully removable, two-piece trap insert and rodding eye, 50 mm water seal (conforming to DIN EN 1253)
- Temporary blanking plate
- Spigot can be shortened for floorings 10 – 36 mm (including adhesive)


MATERIAL

Polypropylene drain body and outlet, highly impact-resistant;
 1.4301 stainless steel grate, load class K 3 (300 kg); spigot and frame in ABS

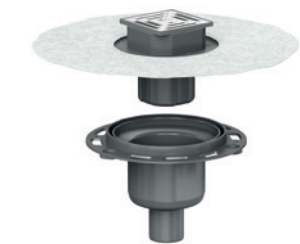
- ▶ **floor drain DalIDrain Pure vertical OM, 100 x 100 mm**
 Pre-assembled set consisting of parts no. 517258 + 517234.
 Grating with positioning aid laterally adjustable + / - 2.5 mm.
- ▶ **floor drain DalIDrain Pure vertical OM, 120 x 120 mm**
 Pre-assembled set consisting of parts no. 517289 + 517234.
 Grating with positioning aid laterally adjustable + / - 9.5 mm.

FLOW RATE TESTED TO DIN EN 1253 (with 10/20 mm water over grate)		
	Required	Dallmer
DN 50	0.8 l/s	0.72 / 1.30 l/s
DN 100	0.8 l/s	0.72 / 1.30 l/s

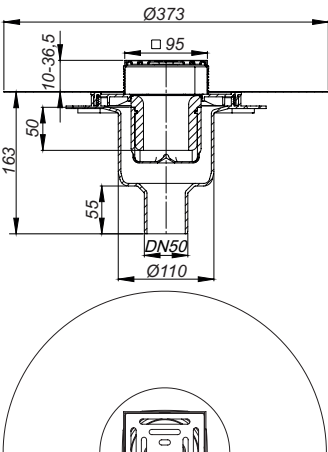
ITEM	DN	DIMENSION	PART NO.
 Floor drain DalIDrain Pure vertical OM	DN 50 / DN100	100 x 100 mm	517685
 Floor drain DalIDrain Pure vertical OM	DN 50 / DN100	120 x 120 mm	517692

-  Fire and sound-insulating collar - installation kit 2 (Part No. 515025) or fire protection kit 12 (Part No. 515438) applicable.

Can be connected to British standard pipework with adaptor part No. 880727.



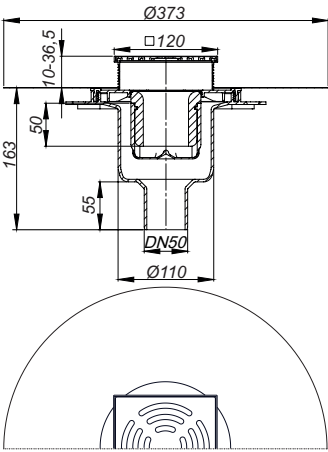
floor drain DalIDrain Pure vertical OM,
100 x 100 mm



core drill: d: 130 mm
 core drill for
 fire and sound-insulating collar 2: d: 157 – 177 mm
 core drill for
 fire protection kit 12 12: d: 120 mm



floor drain DalIDrain Pure vertical OM,
120 x 120 mm



core drill: d: 130 mm
 core drill for
 fire and sound-insulating collar 2: d: 157 – 177 mm
 core drill for
 fire protection kit 12 12: d: 120 mm

DallDrain accessories

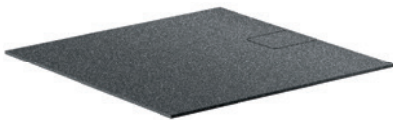
DALLMER sound insulation mat DallDrain

For installation with DallDrain and DallDrain Plan drain bodies / floor drains with side outlet.
If installed conforming to test report, suitable to meet increased sound insulation requirements in accordance with DIN 4109 and VDI 4100.

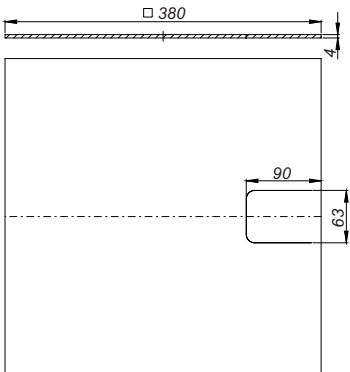
MATERIAL

rubber, coated on both sides with fleece

ITEM	DIMENSION	PART NO.
Sound insulation mat DallDrain	380 x 380 mm	517326



sound insulation mat DallDrain



DALLMER mounting aid DallDrain

For quick and easy installation of the drain body DallDrain into the thermal insulation.

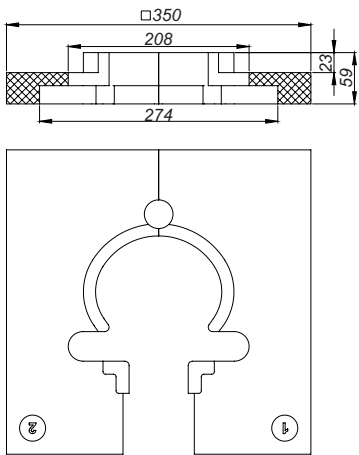
MATERIAL

EPS

ITEM	DIMENSION	PART NO.
Mounting aid DallDrain	350 x 350 mm	517319



mounting aid DallDrain



DALLMER mounting aid DallDrain Plan

For quick and easy installation of the drain body DallDrain Plan into the thermal insulation.

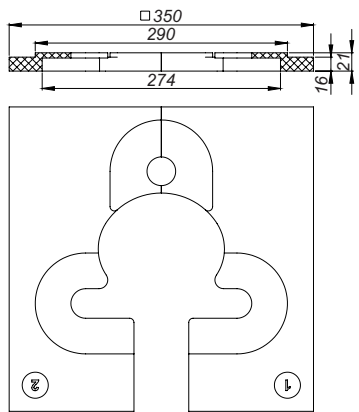
MATERIAL

EPS

ITEM	DIMENSION	PART NO.
Mounting aid DallDrain Plan	350 x 350 mm	517302



mounting aid DallDrain Plan



DalIDrain accessories

DALLMER fire and sound-insulating collar – installation kit 2

used with floor drain bodies / floor drains DalIDrain vertical.

For F 30 / 60 / 90 / 120 rated floors.

SPECIFICATION

- insertion element
- intumescent material
- built-in hangers
- mortar guard
- sound-insulating collar
- blanking plate

Fire protection class
R 30 / 60 / 90 / 120
approval number Z-19.17-1543

connects to:

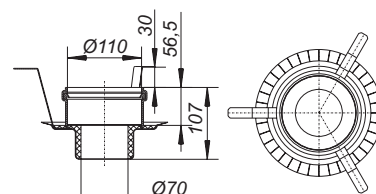
plastic pipework DN 50 with couplings,

cast iron pipework DN 50 with DALLMER HT/SML pipe coupling DN 50 / DN 50 (part-no. 880024)

ITEM	DN	PART NO.
Fire and sound-insulating collar - installation kit 2	DN 50	515025



fire and sound-insulating collar – installation kit 2



core drill: d: 157 – 177 mm

DALLMER sleeve former DD 160

coated styrofoam, used when installing fire and sound-insulating collar – installation kit 2

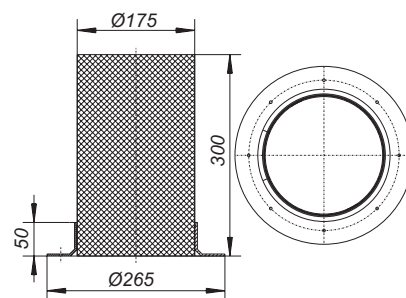
UITVOERING

holder in polypropylene

ITEM	DIMENSION	PART NO.
Sleeve former DD 160	d: 175 mm	495501



sleeve former DD 160



DALLMER fire protection kit 12

For retrofitting under drain bodies and floor drains DalIDrain and TistoPlan with vertical outlet.

For F 30 / 60 / 90 / 120 rated floors.

SPECIFICATION

- insertion element
- intumescent material

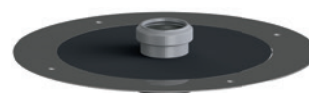
Fire protection class
R 30 / 60 / 90 / 120
approval number Z-19.17-1543

connects to:

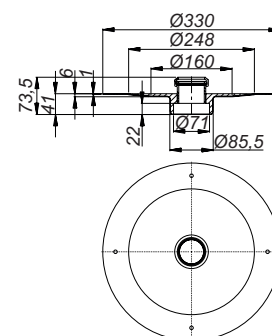
plastic pipework DN 50 with couplings,

cast iron pipework DN 50 with DALLMER HT/SML pipe coupling DN 50 / DN 50 (part-no. 880024)

ITEM	DN	PART NO.
Fire protection kit 12	DN 50	515438



fire protection kit 12



core drill: d: 120 mm

DalIDrain accessories

DALLMER raising piece DalIDrain

For installation with DalIDrain drain bodies, DalIDrain floor drains.

SPECIFICATION

- backflow seal
- temporary blanking plate
- can be shortened 19 – 125 mm

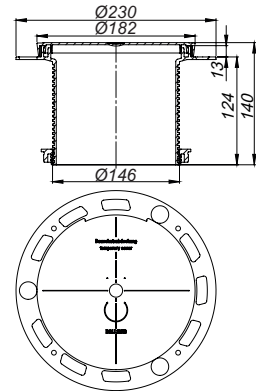
MATERIAL

polypropylene, highly impact-resistant

ITEM	PART NO.
Raising piece DalIDrain	517241



raising piece DalIDrain



DALLMER hair sieve DalIDrain

Accessory used with gratings and floor drains DalIDrain.

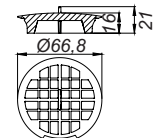
MATERIAL

polypropylene, highly impact-resistant

ITEM	DIMENSION	PART NO.
Hair sieve DalIDrain	d: 66,8 mm	517333



hair sieve DalIDrain



DALLMER mounting feet DalIDrain

For fixing and height adjustment of the drain bodies DalIDrain: 85 – 250 mm (DalIDrain), 55 – 250 mm (DalIDrain Plan), 47 – 250 mm (DalIDrain vertical).

SPECIFICATION

- Three sound-insulated mounting feet with fastening material
- Three sound-insulated threaded rods with lock nuts

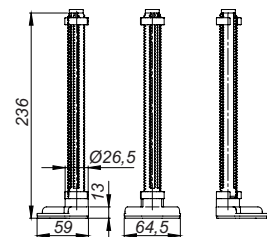
MATERIAL

ABS; TPE; polypropylene, highly impact-resistant

ITEM	HEIGHT	PART NO.
Mounting feet DalIDrain	236 mm	517340



mounting feet DalIDrain



DALLMER coupling

DN 40 or DN 50 compression joint with solvent weld socket BS EN 1455 1 1/2" or BS 5255 2"

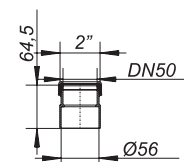
MATERIAL

ABS

ITEM	DIMENSION	PART NO.
Coupling	DN 40 x BS 1 1/2"	880734
Coupling	DN 50 x BS 2"	880727



coupling



DalIDrain spare parts

DALLMER sealing sleeve DalIDrain

Spare part suitable for drain bodies and floor drains DalIDrain.

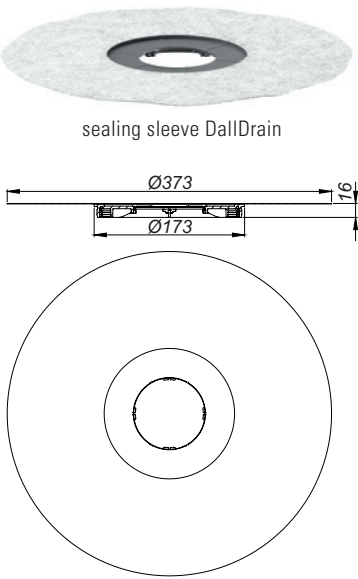
SPECIFICATION

- Flexible, click-in sealing sleeve for secure connection to bonded and sheet waterproofing conforming to DIN 18534

MATERIAL

polypropylene, TPE

ITEM	DIMENSION	ART. NR.
Sealing sleeve DalIDrain	d: 373 mm	517197



DALLMER trap insert DalIDrain

Spare part suitable for drain bodies and floor drains DalIDrain.

MATERIAL

polypropylene, highly impact-resistant

- **trap insert DalIDrain**
Suitable for drain bodies / floor drains DalIDrain and DalIDrain vertical.
- **trap insert DalIDrain Plan**
Suitable for drain bodies / floor drains DalIDrain Plan.

ITEM	DIMENSION	ART. NR.
Trap insert DalIDrain	d: 80,5 mm	517357
Trap insert DalIDrain Plan	d: 80,5 mm	517364



What is included in our offering

*We make light work of everyday chores –
from the warranty right through to all aspects of technology*

A promise which you can extend
to your customers



Visit us at dallmer.com

Get to know our complete product range for indoor and outdoor drainage, discover new ideas for bathroom design and use our comprehensive range of materials for planning and installation. Find out more about our company and dates and topics which are of interest to the drainage sector.

On-call support:
The DALLMER Service Hotline

+49 2932 9616 - 444

Monday to Thursday: 7.15 a.m. to 5 p.m.
Friday: 7.15 a.m. to 2 p.m.



 DallmerVideos

 dallmer.official

 dallmer_official

 dallmer_official

 Dallmer WhatsApp service: +49 170 2801433

DATED 09/2021

Registered Address:

Dallmer Ltd.
c/o Seago and Stopps Limited
61 Station Road
Sudbury, Suffolk CO 10 2 SP
United Kingdom
Co. Reg. No.: 03235118

Business Address:

Dallmer GmbH + Co. KG
Wiebelsheidestrasse 25
59757 Arnsberg
Germany

T +44 (0) 17 87 24 82 44
E sales@dallmer.com
accounts@dallmer.com
W www.dallmer.com