



# Jungle Gems™



Crystal Glaze

**Mayco**  
**Jungle Gems™**  
**Crystal Glaze**

*For Artists of All Ages!*

Mayco's Jungle Gems™ Crystal Glazes transform in the kiln when the small pieces of glass frit burst into color and intricate patterns during the firing process. Artists use these beautiful glazes to add dramatic, colorful effects to their creations. Jungle Gems™ Crystal Glazes can be used alone or in combination with other glazes and can be fired from cone 06 to 6. Refer to the individual color label for cone 6 firing performance.

Jungle Gems™ Crystal Glazes have been in the market for many years and were originally formulated using a leaded frit. In 2005, they were converted to a leadless formula, similar to the Mayco Crystalites glaze, which have always been lead-free. We have merged these two great product lines into one, all under the Jungle Gems™ brand. This merge simplifies the selection for the consumer as the glazes perform identically. Crystalite colors will keep their item numbers, name and the entire Crystal Glaze product line remains lead-free.

Jungle Gems™ Crystal Glazes are recommended for ornamental use only when applied to low fire earthenware clay bodies. All but three Jungle Gems™ glazes have been certified as Non-Toxic, suitable for use by artists of all ages when used according to manufacturer's directions. Jungle Gems™ are not recommended for dinnerware produced from low fire earthenware clay bodies as these glazes can exhibit surface textures such as cracks and crevices. While the glazed surface may pass lead & cadmium leach tests, and therefore legally considered Food Safe, attempts to adequately clean the textured surface may cause the underlying porous ware to absorb water and fail. Jungle Gems™ glazes may be considered dinnerware safe if surface texture is eliminated when firing to mid-range or high fire temperatures. We invite you to unleash your creativity with Jungle Gems™ Crystal Glazes.

**Available Sizes**

4 oz jar  
 16 oz pint



**Art in a Jar™!**

**CONE**  
**06/05**  
 (998°C - 1031°C)  
 (1828°F - 1888°F)

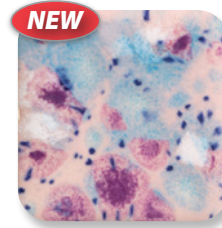


Except:  
 Jungle Gems  
 on page 6  
 marked CL



[www.Pappel.com](http://www.Pappel.com)

**New Jungle Gems™ Glazes**



CG-998  
 Pink Pixie



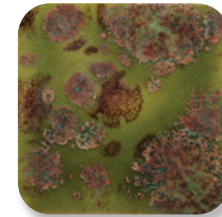
CG-999  
 Jazz Notes



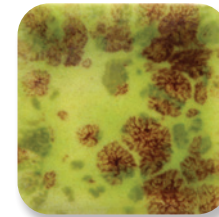
CG-1000  
 Mardi Gras



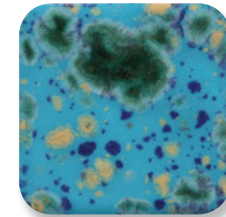
CG-1001  
 Gogh Iris



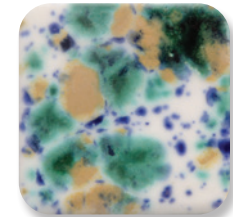
CG-716  
 Pagoda Green



CG-717  
 Pistachio



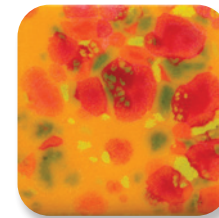
CG-718  
 Blue Caprice



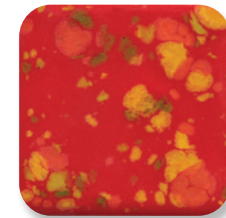
CG-722  
 Seawind



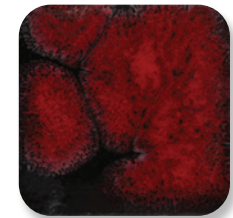
CG-750  
 Noel



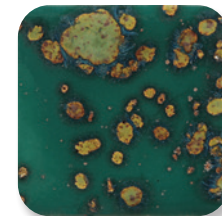
CG-753  
 Sassy Orange



CG-756  
 Firecracker



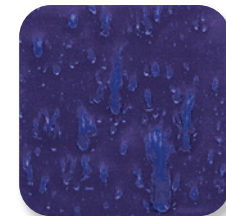
CG-779  
 Black Opal



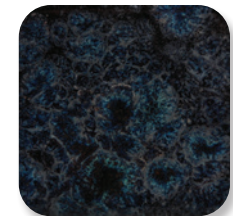
CG-780  
 Mystic Jade



CG-783  
 Strawberry Sundae



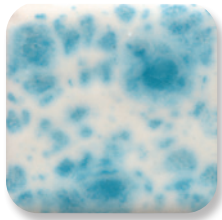
CG-785  
 Royal Fantasy



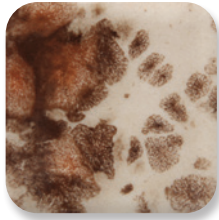
CG-786  
 Obsidian



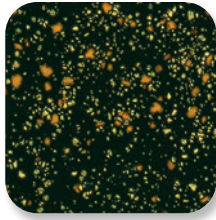




CG-788  
Dutch Enamelware



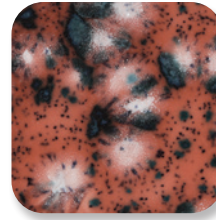
CG-795  
Yadro Print



CG-798  
Black Iris



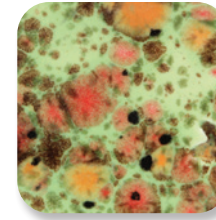
CG-954  
Wildfire



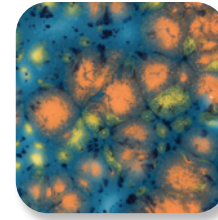
CG-980  
Coral Puff



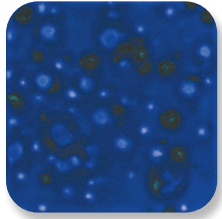
CG-981  
Fruity Freckles



CG-982  
Mixed Melon



CG-983  
Koi Pond



CG-958  
Lagoon Blue



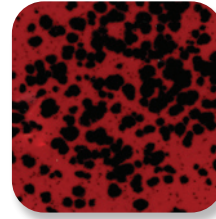
CG-962  
Blue Azure



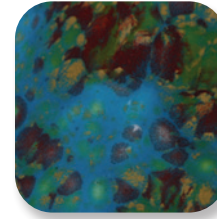
CG-963  
Lemon Lime



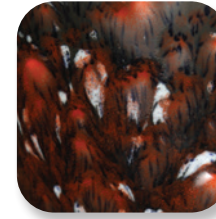
CG-964  
Kaleidoscope



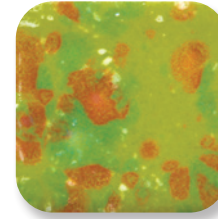
CG-984  
Ladybug



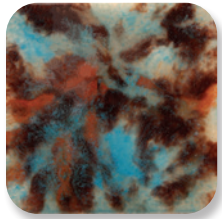
CG-985  
Monet's Pond



CG-986  
Smoke & Fire



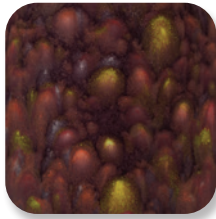
CG-987  
Tree Frog



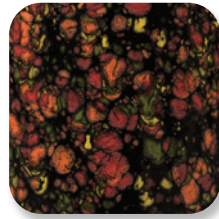
CG-965  
Mocha Marble



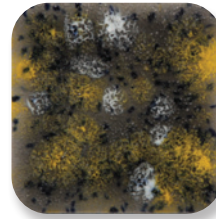
CG-968  
Peppermint Twist



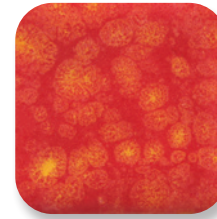
CG-969  
Floral Fantasy



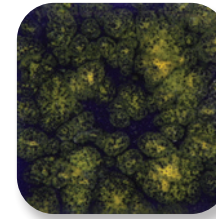
CG-970  
Masquerade



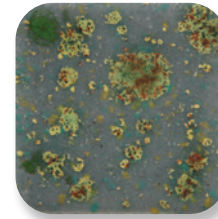
CG-988  
Fireflies



CG-989  
Fruit Punch



CG-990  
Starry Night



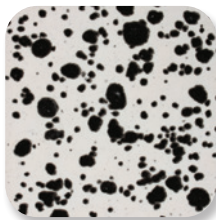
CG-991  
Mountain Moss



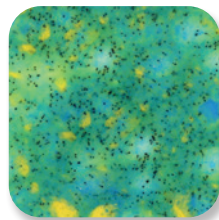
CG-972  
Dragon's Breath



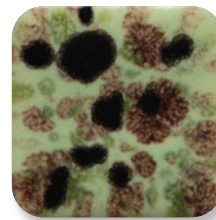
CG-974  
Bloomin' Blue



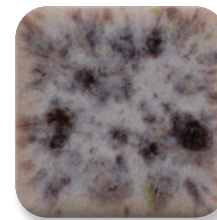
CG-977  
Ink Spots



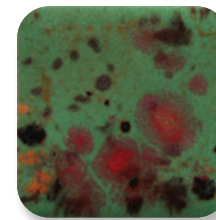
CG-979  
Meadow



CG-992  
Mint Chip



CG-993  
Lavender Sprigs

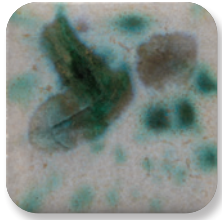


CG-994  
Field & Flowers



CG-995  
Foggy Mist

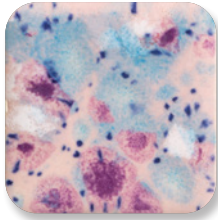




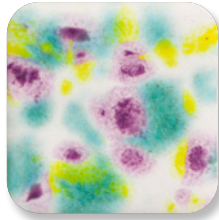
CG-996  
Spring Rain



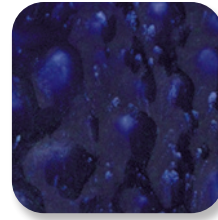
CG-997  
Seafoam



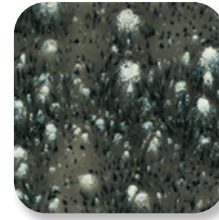
CG-998  
Pink Pixie



CG-999  
Jazz Notes



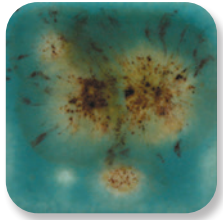
S-2716  
Celestial Blue



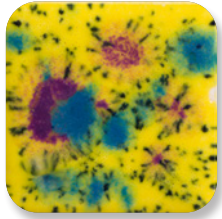
S-2718  
Cosmic Black



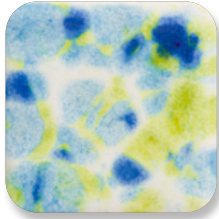
S-2723  
Grape Divine



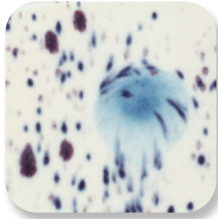
S-2724  
Lotus Blossom



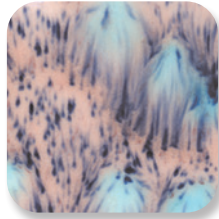
CG-1000  
Mardi Gras



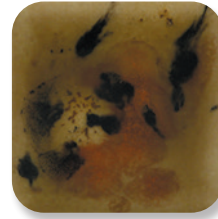
CG-1001  
Gogh Iris



S-2701  
Peacock Eyes



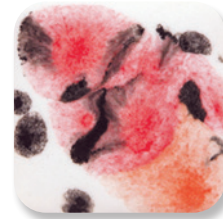
S-2702  
Northern Lights



S-2725  
Safari



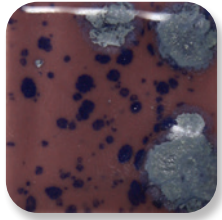
S-2726  
Cheetah



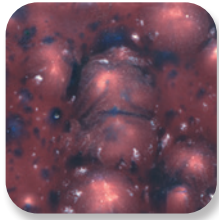
S-2727  
Poppy Fields



S-2729  
Citrus Splash



S-2703  
Berryberry Pie



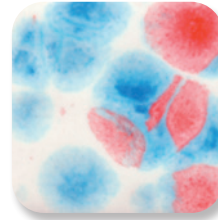
S-2704  
Plum Jelly



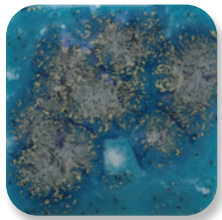
S-2708  
Oriental Carmel



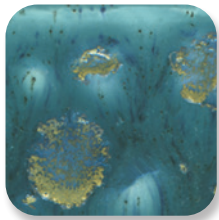
S-2709  
Cappuccino Mint



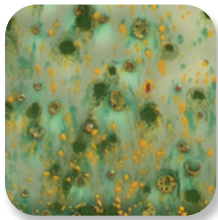
S-2731  
Kaboom



S-2711  
Tahiti Grape



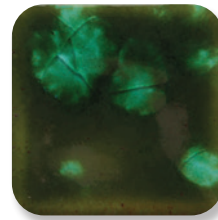
S-2712  
Monsoon Seas



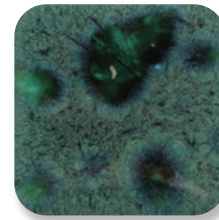
S-2714  
Herb Garden



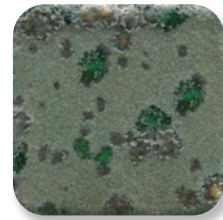
S-2715  
Spotted Kiwi



CG-707  
Woodland Fantasy



CG-713  
Peacock Green



CG-973  
Alligator

CG-707 and CG-713 are considered health caution due to soluble copper in the formulation. CG-973 is considered health caution due to barium in the formulation.





CG-753 Sassy Orange and  
CG-756 Firecracker, Cone 06

Use as a standalone or layer with another crystal glaze to create a unique effect and finish.

Layer with other  
Mayco glazes including  
Stroke & Coat®, Elements™,  
Foundations® and Cobblestone



CG-753 Sassy Orange, Cone 06



FN-001 White, SC-11 Blue Yonder,  
CG-753 Sassy Orange, CG-756 Firecracker,  
and SG-201 Black Cobblestone, Cone 06

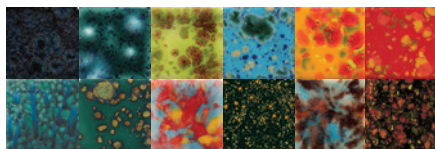


## Crystal Glazes Kits

Jungle Gems™ Class Packs contain a collection of the most popular colors of our crystal-infused gloss glazes.

### Jungle Gems™ Crystal Glazes Kit

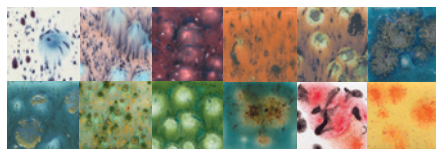
**CG-KIT2** Contains 12 – 4 oz jars, one each of the following colors.  
**CG-KT2P** Contains 12 – Pints – one each of the following colors.



CG-785 Royal Fantasy  
CG-974 Bloomin' Blue  
CG-717 Pistachio  
CG-718 Blue Caprice  
CG-753 Sassy Orange  
CG-756 Firecracker  
CG-962 Blue Azure  
CG-780 Mystic Jade  
CG-964 Kaleidoscope  
CG-798 Black Iris  
CG-965 Mocha Marble  
CG-970 Masquerade

### Crystalites™ Kit

**S2-KIT2** Contains 12 – 4 oz jars, one each of the following colors.  
**S2-KT2P** Contains 12 – Pints, one each of the following colors.



S-2701 Peacock Eyes  
S-2702 Northern Lights  
S-2704 Plum Jelly  
S-2708 Oriental Carmel  
S-2709 Cappuccino Mint  
S-2711 Tahiti Grape  
S-2712 Monsoon Seas  
S-2714 Herb Garden  
S-2715 Spotted Kiwi  
S-2724 Lotus Blossom  
S-2727 Poppy Fields  
S-2729 Citrus Splash

**Value priced packs available  
in 4oz and pint sizes.**

## Crystal glazes can be fired to higher temperatures for very interesting results.

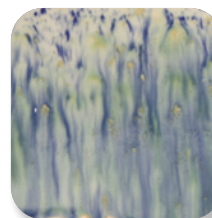
While formulated for cone 06/05 use, many of the glazes perform beautifully at higher temperatures. Refer to the individual color label for cone 6 firing performance. As Jungle Gems™ tend to flow at higher temperatures, firing your glazed ware flat or vertical can greatly impact the look, as seen on the chips below. Due to the movement of the glaze, we recommend limiting the amount of crystals on the bottom third of a vertical piece to avoid running off the ware. We recommend testing prior to use.

Fired flat  
Cone 6



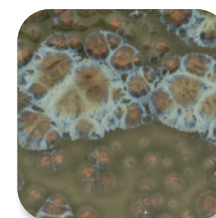
CG-722  
Seawind

Fired vertically  
Cone 6



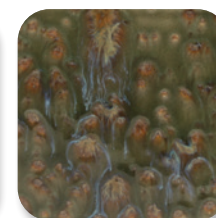
CG-722  
Seawind

Fired flat  
Cone 6

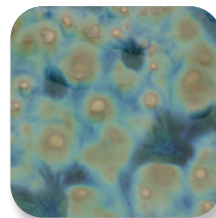


CG-780  
Mystic Jade

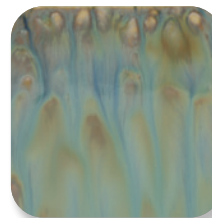
Fired vertically  
Cone 6



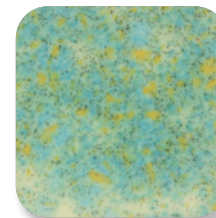
CG-780  
Mystic Jade



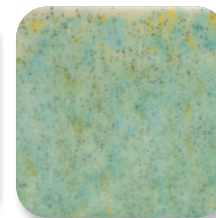
CG-962  
Blue Azure



CG-962  
Blue Azure



CG-979  
Meadow



CG-979  
Meadow

## Crystal glazes can be used in combination with Mayco Fundamentals™ Underglazes, Stoneware, and Stroke & Coat® at cone 6



S-2714 Herb Garden  
and UG-209 Jade



CG-977 Ink Spots,  
CG-974 Bloomin' Blue,  
and UG-50 Jet Black



S-2708 Oriental Carmel  
and UG-30 Sand



## Cone 6 Results for Select Jungle Gems™ Crystal Glazes



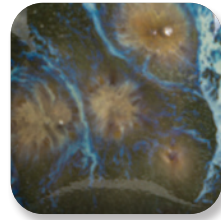
CG-718  
Blue Caprice



CG-722  
Seawind



CG-753  
Sassy Orange



CG-780  
Mystic Jade



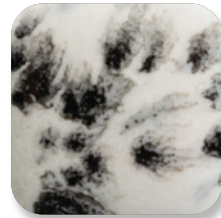
CG-954  
Wildfire



CG-962  
Coral Puff



CG-970  
Masquerade



CG-977  
Ink Spots



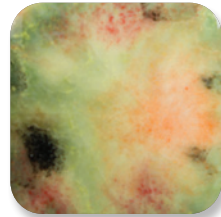
CG-979  
Meadow



CG-980  
Coral Puff



CG-981  
Fruity Freckles



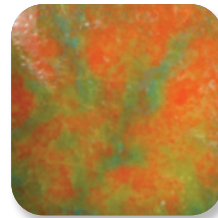
CG-982  
Mixed Melon



CG-984  
Ladybug



CG-985  
Monet's Pond

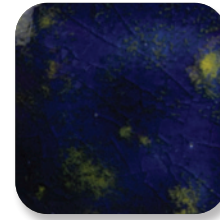


CG-987  
Tree Frog

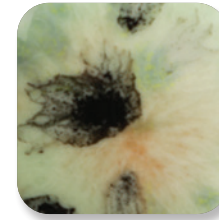


CG-988  
Fireflies

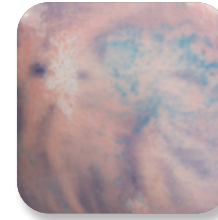
## Cone 6 Results for Select Jungle Gems™ Crystal Glazes



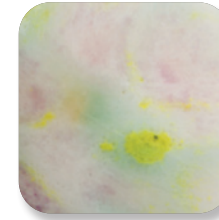
CG-990  
Starry Night



CG-992  
Mint Chip



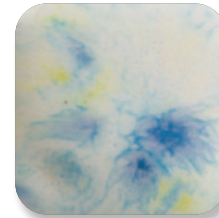
CG-998  
Pink Pixie



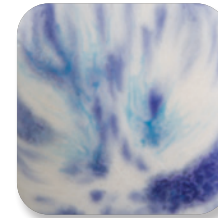
CG-999  
Jazz Notes



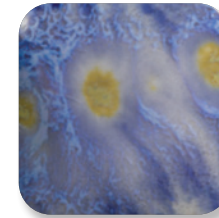
CG-1000  
Mardi Gras



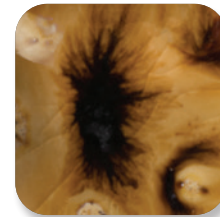
CG-1001  
Gogh Iris



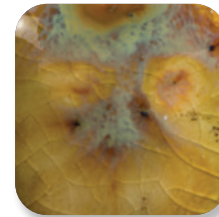
S-2701  
Peacock Eyes



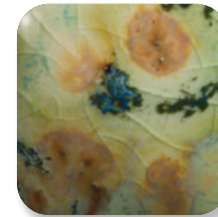
S-2703  
Berryberry Pie



S-2708  
Oriental Carmel



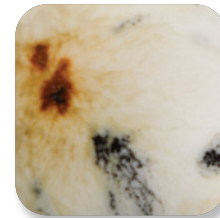
S-2709  
Cappuccino Mint



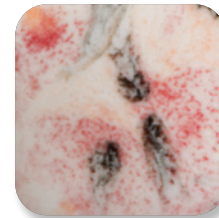
S-2714  
Herb Garden



S-2725  
Safari



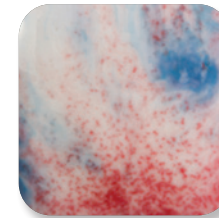
S-2726  
Cheetah



S-2727  
Poppy Fields



S-2729  
Citrus Splash



S-2731  
Kaboom

# Stroke & Coat®

The Creative Choice

An intermixable, versatile glaze  
perfect for the classroom or studio.



# Elements™

Inspired by nature, and designed to  
simulate the aesthetic movement and  
interest of mid and high fire glazes.



# STONEWARE

Depth, sophistication, and reliability  
for artists working from mid-range  
to high fire temperatures.



Expand your palette  
with these glaze lines and  
other products from Mayco.