

FIRE PITS



AVAILABLE IN 3 SIZES*

Ranger

HEIGHT
31.7 cm

WEIGHT
6.8 kg

DIAMETER
38.1 cm

MATERIAL
304 Stainless Steel

Yukon

HEIGHT
39.37 cm

WEIGHT
18.14 kg

DIAMETER
68.58 cm

MATERIAL
304 Stainless Steel

Bonfire

HEIGHT
35.56 cm

WEIGHT
9.07 kg

DIAMETER
49.53 cm

MATERIAL
304 Stainless Steel

STOVES



AVAILABLE IN 3 SIZES*

Titan

HEIGHT
20.07 cm

WEIGHT
467.77 g

DIAMETER
12.95 cm

MATERIAL
304 Stainless Steel

Campfire

HEIGHT
23.5 cm

WEIGHT
997.9 g

DIAMETER
17.78 cm

MATERIAL
304 Stainless Steel

Lite

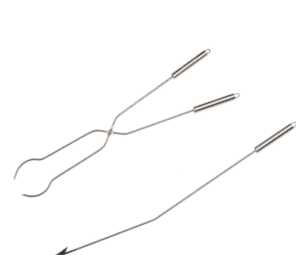
HEIGHT
14.49 cm

WEIGHT
255.15 g

DIAMETER
10.8 cm

MATERIAL
304 Stainless Steel

FIRE PIT ACCESSORIES



Tools



Sticks



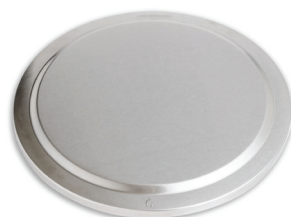
Stand



Fire Pit Cooking System



Shelter



Lid



Heat Deflector



Shield



Thanks to a super-efficient smokeless burn created by a Signature 360° Airflow Design, the days of dodging campfire smoke are over.



HOW IT WORKS

1- Secondary Burn

Vent holes near the top of the burn chamber allow preheated oxygen to fuel the flame, resulting in a more complete combustion and a hotter fire with less smoke.

2- Precision Base Plate

Allows oxygen to feed directly to embers from below. This helps to burn fuel faster and hotter, while allowing consumed ash to fall through the base plate.

3- Ash Pan

Catches loose ash and prevents it from clogging vital airflow. The ash pan also acts as a heat shield preventing your fire pit from scorching the ground beneath it.

4- Airflow

Rising hot air and the absence of oxygen created by the combustion process pull air through the bottom vent holes. This air movement fuels the fire at its base while also providing a boost of preheated air through the vent holes at the top of the burn chamber.

