



Spray
Coating



Roller
Coating



Internal
Application

Adamas is the Deko diamond effect coating. This special coating system has been formulated with a high concentration of brilliant particles, which give an extremely bright finish. Adamas is a water-based system and is available for both roller and spray applications, offering extremely high performance for both formulations. The high concentration of metallic effect provides a brilliant high-end appearance while maintaining excellent nonstick performance and durability.

General information

Adamas is the Deko diamond effect coating. This special coating system has been formulated with a high concentration of brilliant particles, which give an extremely bright finish. Adamas is a water-based system and is available for both roller and spray applications, offering extremely high performance for both formulations. The high concentration of metallic effect provides a brilliant high-end appearance while maintaining excellent nonstick performance and durability.

Marketing Features

- Formulated with a high concentration of brilliant particles, which gives an extremely bright finish.
- Great abrasion resistance.
- Fantastic wear resistance.
- Made without PFOA
- Internal applications available
- Custom colors & formulations

Color Availability

Adamas is available in variety of custom colors and finishes.

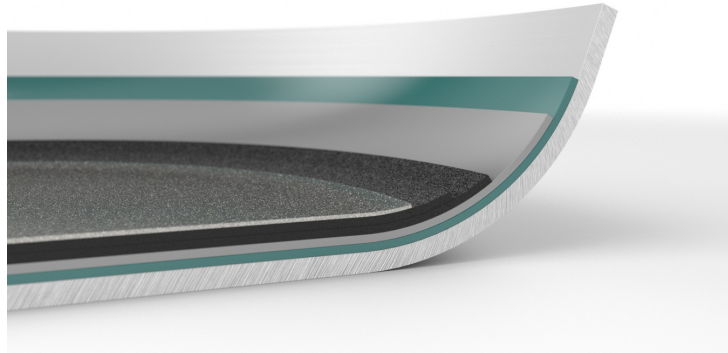
Use and Care Recommendations

- Before using all cookware for the first time, wash it thoroughly with hot soapy water to ensure it is clean. Seasoning a nonstick pan is not required, but if desired for a deeper surface clean, lightly rub cooking oil on the surface, and then place over medium heat for 2 - 3 minutes. When it cools, wash the pan and rinse clean. It's ready to go!
- Always use low or medium heat when cooking food. This helps preserve the nutrients in food (many of which are fragile, and easily damaged when heated to extremes). It also helps preserve the nonstick surface.
- All nonsticks will last longer if you are careful not to stab the surface with a sharp point or cut foods with a knife while in the cookware.
- Do not overheat empty cookware. Always be sure that oil, water or food materials are in the cookware prior to heating it.
- Do not use cookware as a food storage container, which could encourage staining. It's better to keep cookware clean when not in use.
- Always allow cookware to cool before immersing in water.
- If the nonstick performance declines, it can be from residue built up on the surface. Other residue can form from misuse, such as burned grease or food residue. In either case, a deep cleaning of the nonstick surface can help restore the nonstick performance. You can try soaking overnight in hot soapy water, and then thoroughly washing the pan the next morning.

Adamas Interior Coatings

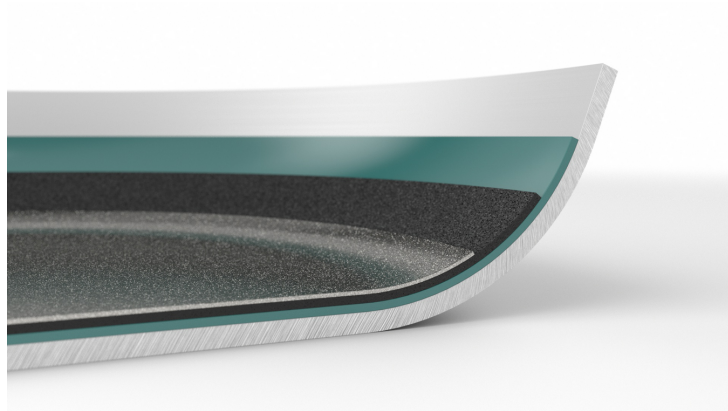
Adamas RI

Roller coating with diamond finish.



Adamas SI

Spray coating with diamond finish.



Disclaimer: The data listed here is based on the coating being applied as per the application parameters recommended by Deko SRL, as listed here. Ensuring proper application is key to all coatings performing as they have been designed. This included proper film thickness, proper surface preparation profile and proper and complete cure. This data does not reflect or indicate how the coating will perform in its intended use and is not a guarantee of specific performance. Nor shall the data be construed as creating any express or implied warranty or any kind of description as to quality of performance of the finished product.

Spray
CoatingRoller
CoatingInternal
Application

Standard System

TOPCOAT

4

Substrates

- Rolled Disc
- Stainless Steel
 - Alloy type 1050, 3003, 4006, 8006
 - Alloy FDA Regulated

Information

	Adams RI	Adamas SI
Market Category	Cookware	Cookware
Number of Layers	2-3	2-3
Carrier	Water	Water
Release Component	PTFE	PTFE
Cure Temperature	425° C/800° F	425° C/800° F
Reinforced	Yes	Yes
Surface Preparation	Degreasing and Pickling 0,8 to 1.5 µm / Mechanical Sandpapering 1,5 to 2,5 µm	Degreasing and Pickling 0,8 to 1.5 µm / Mechanical Sandblasting 2,5 to 3,5 µm
Dry Film Thickness	19-25 µm	19-25 µm
Continuous use T°	260°C/500°F	260°C/500°F
Adhesion Test	3	3
Nonstick Test	4	4
Adhesion Test	5	5