

TOUGH CASE

2016
PRODUCT CATALOGUE



TOUGH CASE







TOUGH CASE

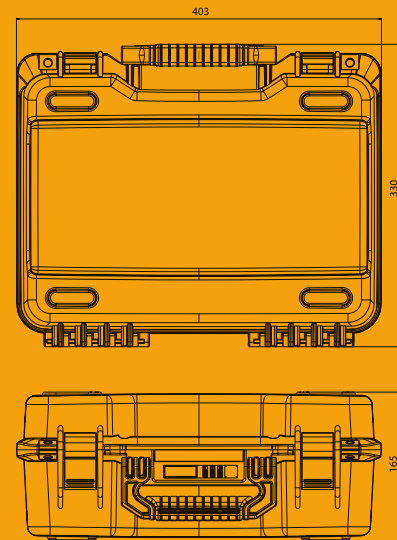
THE respect to our quality is increasing together with our desire to develop and innovate. Therefore, since 1973 we are improving our industrial skills according to the spirit and needs of time. Our knowledge and experience about the dynamic needs of the sector, is brought to life with our technological infrastructure and our functional designs which make life easier.

MANO designs and innovations, got the attention of many professional users all around the world, seeking solutions to their needs and gained their admiration and appreciation. We are very proud to see that; today, there is a group of professionals that use **MANO** products faithfully all around the world. As the passion of our production team to innovation and quality is appreciated among the professionals, our desire to advance our innovative mission is getting stronger day by day.

Now, we are offering new solutions to the equipment security concerns of the professionals working under challenging conditions with our new professional series **MANO TOUGH CASES**.



Air proof, Waterproof and Dustproof. Excellent resistance against impacts. MANO TOUGH CASES are designed for professionals.



AVAILABLE COLOURS



YELLOW



ORANGE



SILVER



OLIVE



Tough Case / MTC 200 / Empty



STANDART FEATURURES

Waterproof
Impact Resistant
Crushproof
Podlockable
Dustproof
Latching System
Soft Grip Handle
Stainless Steel Hardware
High Performance Gasket
Pressure Release Valve
Stackable

1

MANO TOUGH CASES are equipped with Pressure Release valves providing easy opening even after excessive altitude changes.



CASE SPECIFICATIONS

EXTERIOR DIMENSIONS

L 403mm x W 330mm x H 165mm

L 15,8" x W 13,0" x H 6,5"

INTERIOR DIMENSIONS

L 370mm x W 263mm x H 150mm

L 14,5" x W 10,3" x H 5,9"

WEIGHT (EMPTY): 2,1 Kgs / 4,63 lbs

LID DEPTH: 55 mm / 2,1"

BASE DEPTH: 95 mm / 3,7"

TEMPERATURE RANGE : Min -29 C (-20 F) Max 60 C (140 F)

AIRLINE CARRY-ON : YES

WATERTIGHT: YES



PACKAGING SPECIFICATIONS

Quantity per carton: 1

Carton dimensions

L 41,5 cm x W 34 cm x H 17 cm

L 16,3" x W 13,3" x H 6,7"

Carton Volume: 0,023 Cbm

Carton weight (no foam): 2,4 Kgs / 5,29 lbs

CERTIFICATION

IP67



AVAILABLE OPTIONS



LOCKING SYSTEM

Combination lock system can be added if needed.



Lid Foam + Plastic Dividers

200 PL



Lid Foam + Cubed Foam

200 C

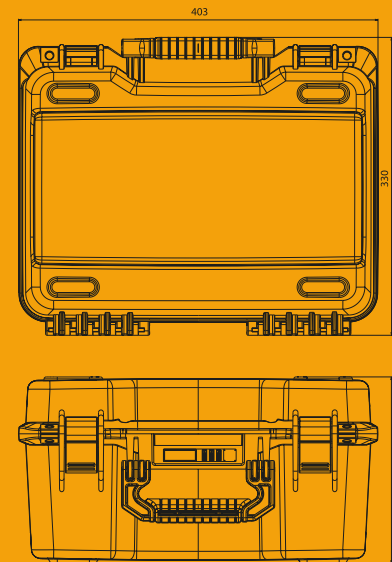


Lid Foam + Padded Dividers

200 P



Air proof, Waterproof and Dustproof. Excellent resistance against impacts. MANO TOUGH CASES are designed for professionals.



AVAILABLE COLOURS



YELLOW



ORANGE



SILVER



OLIVE



Tough Case / MTC 230 / Empty



STANDART FEATURURES

Waterproof
Impact Resistant
Crushproof
Podlockable
Dustproof
Latching System
Soft Grip Handle
Stainless Steel Hardware
High Performance Gasket
Pressure Release Valve
Stackable

2

High performance gaskets prevent any air, water and dust access.



CASE SPECIFICATIONS

EXTERIOR DIMENSIONS

L 403mm x W 330mm x H 210mm

L 15,8" x W 13,0" x H 8,2"

INTERIOR DIMENSIONS

L 370mm x W 263mm x H 197mm

L 14,5" x W 10,3" x H 7,7"

WEIGHT (EMPTY) : 2,4 Kgs / 5,3 lbs

LID DEPTH : 55 mm / 2,1"

BASE DEPTH : 142 mm / 5,6"

TEMPATURE RANGE: Min -29 C (-20 F) Max 60 C (140 F)

AIRLINE CARRY-ON: YES

WATERTIGHT: YES



PACKAGING SPECIFICATIONS

Quantity per carton: 1

Carton dimensions

L 41,5 cm x W 34 cm x H 21,5 cm

L 16,3" x W 13,3" x H 8,4"

Carton Volume: 0,030 Cbm

Carton weight (no foam): 2,8 Kgs / 6,17 lbs

CERTIFICATION

IP67



AVAILABLE OPTIONS



LOCKING SYSTEM

Combination lock system can be added if needed.



Lid Foam + Plastic Dividers

230 PL



8 697444 387181



Lid Foam + Cubed Foam

230 C



8 697444 387198



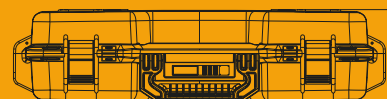
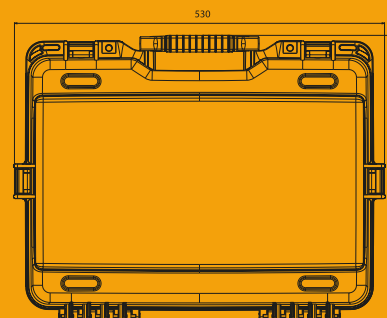
Lid Foam + Padded Dividers

230 P



8 697444 387204

Air proof, Waterproof and Dustproof. Excellent resistance against impacts. MANO TOUGH CASES are designed for professionals.



Tough Case / MTC 300 / Empty

AVAILABLE COLOURS



YELLOW



ORANGE



SILVER



OLIVE



STANDART FEATURURES

Waterproof
Impact Resistant
Crushproof
Podlockable
Dustproof
Latching System
Soft Grip Handle
Stainless Steel Hardware
High Performance Gasket
Pressure Release Valve
Stackable



3

MANO TOUGH CASES are highly resistant against free-falls and can even resist the pressure of a vehicle passing over.



→ CASE SPECIFICATIONS

EXTERIOR DIMENSIONS

L 530mm x W 400mm x H 133mm

L 20,8" x W 15,7" x H 5,2"

INTERIOR DIMENSIONS

L 463mm x W 338mm x H 120mm

L 18,2" x W 13,3" x H 4,7"

WEIGHT (EMPTY): 2,9 Kgs / 6,4 lbs

LID DEPTH: 55 mm / 2,1"

BASE DEPTH: 65 mm / 2,5"

TEMPERATURE RANGE: Min -29 C (-20 F) Max 60 C (140 F)

AIRLINE CARRY-ON: YES

WATERTIGHT: YES



→ PACKAGING SPECIFICATIONS

Quantity per carton: 1

Carton dimensions

L 54 cm x W 41,5 cm x H 14,5 cm

L 21,2" x W 16,3" x H 5,7"

Carton Volume: 0,032 Cbm

Carton weight (no foam): 3,3 Kgs / 7,27 lbs

CERTIFICATION

IP67



AVAILABLE OPTIONS



SHOULDER STRAPS

Shoulder straps for easy carriage are also available.



LOCKING SYSTEM

Combination lock system can be added if needed.



Lid Foam + Plastic Dividers

300 PL



Lid Foam + Cubed Foam

300 C

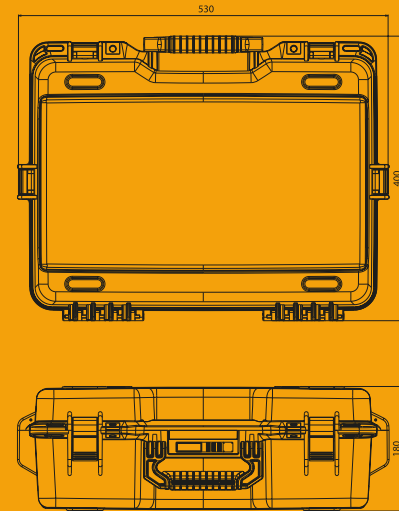


Lid Foam + Padded Dividers

300 P



Air proof, Waterproof and Dustproof. Excellent resistance against impacts. MANO TOUGH CASES are designed for professionals.



AVAILABLE COLOURS



YELLOW



ORANGE



SILVER



OLIVE



Tough Case / MTC 330 / Empty



STANDART FEATURURES

- Waterproof
- Impact Resistant
- Crushproof
- Podlockable
- Dustproof
- Latching System
- Soft Grip Handle
- Stainless Steel Hardware
- High Performance Gasket
- Pressure Release Valve
- Stackable

4

Customizable cubed foams, provides extra protective barriers to the equipments against external effects.



CASE SPECIFICATIONS

EXTERIOR DIMENSIONS

L 530mm x W 400mm x H 180mm

L 20,8" x W 15,7" x H 7,0"

INTERIOR DIMENSIONS

L 463mm x W 338mm x H 165mm

L 18,2" x W 13,3" x H 6,4"

WEIGHT (EMPTY): 3,1 Kgs / 6,8 lbs

LID DEPTH: 55 mm / 2,1"

BASE DEPTH: 110 mm / 4,3"

TEMPERATURE RANGE: Min -29 C (-20 F) Max 60 C (140 F)

AIRLINE CARRY-ON: YES

WATERTIGHT: YES



PACKAGING SPECIFICATIONS

Quantity per carton: 1

Carton dimensions

L 54 cm x W 41,5 cm x H 19 cm

L 21,2" x W 16,3" x H 7,4"

Carton Volume: 0,042 Cbm

Carton weight (no foam): 3,6 Kgs / 7,93 lbs

CERTIFICATION

IP67



AVAILABLE OPTIONS



LOCKING SYSTEM

Combination lock system can be added if needed.



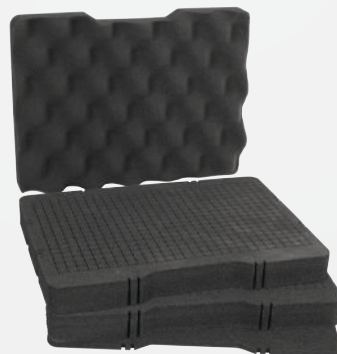
Lid Foam + Plastic Dividers

330 PL



8

697444 387327



Lid Foam + Cubed Foam

330 C



8

697444 387334



Lid Foam + Padded Dividers

330 P



8

697444 387341

5

MANO TOUGH CASES can be customized according to the different needs of professionals.



Plastic Tool Storage Unit
+ Plastic Dividers

330 PP 8 697444 387389

Item Weight Kgs	Item Weight lbs	Carton Weight Kgs	Carton Weight lbs
5,4	11,9	5,8	12,7



Fabric Tool Storage Unit
+ Plastic Dividers

330 BT 8 697444 387396

Item Weight Kgs	Item Weight lbs	Carton Weight Kgs	Carton Weight lbs
5,9	13,0	6,3	13,8

STRONG, STURDY, AND RUGGED

SOLID DEFENSE AGAINST IMPACTS

MANO TOUGH CASES offer a surprising level of sturdiness. Special compound raw material used in the structure of the products provides utmost impact-resistance and flexibility. MANO TOUGH CASES are highly resistant against free-falls and can even resist the pressure of a vehicle passing over.

AIR PROOF, WATERPROOF AND DUSTPROOF

High performance gaskets prevent any leakage and prevent air, water and dust access.

CUSTOMIZABLE INNER SPACE

You have the possibility to practically organize the inner space of MANO TOUGH CASES in accordance with the dimensions of your equipment and provide your equipments extra protective barriers.

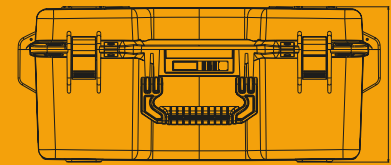
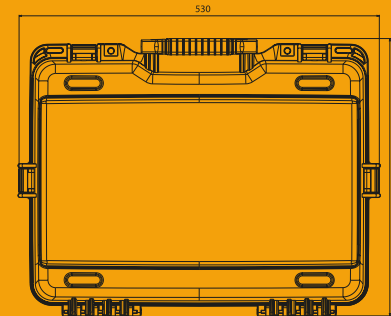


MTC300

Tough Case

Equipment safety under challenging conditions is a must for professionals. Sensitive devices are vulnerable against external effects, unpredictable extraordinary incidents and accidents. MANO TOUGH CASES surround sensitive devices just like a guard and eliminate the risk of damage.

Air proof, Waterproof and Dustproof. Excellent resistance against impacts. MANO TOUGH CASES are designed for professionals.



AVAILABLE COLOURS



YELLOW



ORANGE



SILVER



OLIVE



Tough Case / MTC 360 / Empty



STANDART FEATURURES

Waterproof
Impact Resistant
Crushproof
Podlockable
Dustproof
Latching System
Soft Grip Handle
Stainless Steel Hardware
High Performance Gasket
Pressure Release Valve
Stackable

6

MANO TOUGH CASES were designed to be stacked.

MANO®


CASE SPECIFICATIONS

EXTERIOR DIMENSIONS

L 530mm x W 400mm x H 228mm

L 20,8" x W 15,7" x H 9,0"

INTERIOR DIMENSIONS

L 463mm x W 338mm x H 215mm

L 18,2" x W 13,3" x H 8,5"

WEIGHT (EMPTY): 3,4 Kgs / 7,5 lbs

LID DEPTH: 55 mm / 2,1"

BASE DEPTH: 160 mm / 6,3"

TEMPERATURE RANGE: Min -29 C (-20 F) Max 60 C (140 F)

AIRLINE CARRY-ON: YES

WATERTIGHT: YES



PACKAGING SPECIFICATIONS

Quantity per carton: 1

Carton dimensions

L 54 cm x W 41,5 cm x H 23,5 cm

L 21,2" x W 16,3" x H 9,2"

Carton Volume: 0,052 Cbm

Carton weight (no foam): 3,9 Kgs / 8,59 lbs

CERTIFICATION

IP67


AVAILABLE OPTIONS



LOCKING SYSTEM

Combination lock system can be added if needed.



Lid Foam + Plastic Dividers

360 PL


8 697444 387457



Lid Foam + Cubed Foam

360 C


8 697444 387464



Lid Foam + Padded Dividers

360 P


8 697444 387471



7

MANO TOUGH CASES
have airline carry-on sizes.



Plastic Tool Storage Unit
+ Plastic Dividers

360 PP

8 697444 387518

Item Weight Kgs	Item Weight lbs	Carton Weight Kgs	Carton Weight lbs
5,9	13,0	6,4	14,1



Fabric Tool Storage Unit
+ Plastic Dividers

360 BT

8 697444 387525

Item Weight Kgs	Item Weight lbs	Carton Weight Kgs	Carton Weight lbs
6,3	14,1	6,9	15,2

Photographer...

TOUGH CASE



330 P

SOLID DEFENSE AGAINST IMPACTS

MANO TOUGH CASES offer a surprising level of sturdiness. Special compound raw material used in the structure of the products provides utmost impact-resistance and flexibility. MANO TOUGH CASES are highly resistant against free-falls and can even resist the pressure of a vehicle passing over.

AIR PROOF, WATERPROOF AND DUSTPROOF

High performance gaskets prevent any leakage and prevent air, water and dust access.

CUSTOMIZABLE INNER SPACE

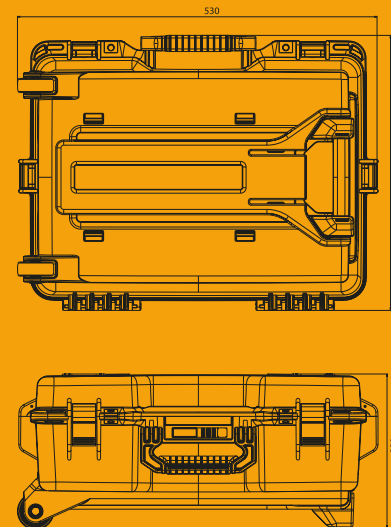
You have the possibility to practically organize the inner space of MANO TOUGH CASES in accordance with the dimensions of your equipment and provide your equipments extra protective barriers.

MT C330

Tough Case

Equipment safety under challenging conditions is a must for professionals. Sensitive devices are vulnerable against external effects, unpredictable extraordinary incidents and accidents. MANO TOUGH CASES surround sensitive devices just like a guard and eliminate the risk of damage.

Air proof, Waterproof and Dustproof. Excellent resistance against impacts. MANO TOUGH CASES are designed for professionals.



AVAILABLE COLOURS



YELLOW



ORANGE



SILVER



OLIVE



8 697444 387570



STANDART FEATURURES

Waterproof
Impact Resistant
Crushproof
Podlockable
Dustproof
Latching System
Soft Grip Handle
Stainless Steel Hardware
High Performance Gasket
Pressure Release Valve

Tough Case / MTC 430 Mobile / Empty



8

Models with telescopic handle and easy-to-ride wheels, provides easy transportation



CASE SPECIFICATIONS

EXTERIOR DIMENSIONS

L 530mm x W 400mm x H 230mm

L 20,8" x W 15,7" x H 9,0"

INTERIOR DIMENSIONS

L 463mm x W 338mm x H 165mm

L 18,2" x W 13,3" x H 6,4"

WEIGHT (EMPTY): 5,2 Kgs / 11,5 lbs

LID DEPTH: 55 mm / 2,1"

BASE DEPTH: 110 mm / 4,3"

TEMPATURE RANGE : Min -29 C (-20 F) Max 60 C (140 F)

AIRLINE CARRY-ON: YES

WATERTIGHT: YES



PACKAGING SPECIFICATIONS

Quantity per carton: 1

Carton dimensions

L 54 cm x W 41,5 cm x H 24 cm

L 21,2" x W 16,3" x H 9,4"

Carton Volume: 0,053 Cbm

Carton weight (no foam): 5,7 Kgs / 12,65 lbs

CERTIFICATION

IP67



AVAILABLE OPTIONS



LOCKING SYSTEM

Combination lock system can be added if needed.

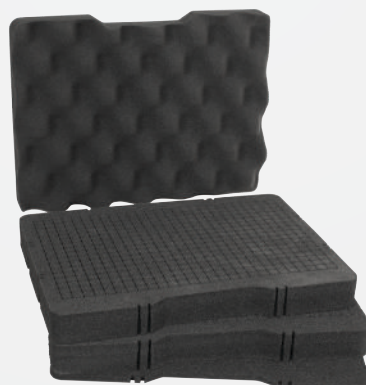


Lid Foam + Plastic Dividers

430 PL



8 697444 387587



Lid Foam + Cubed Foam

430 C



8 697444 387594



Lid Foam + Padded Dividers

430 P



8 697444 387600

9

MANO TOUGH CASE
increase the professional appearance of its users
with its special design.



Plastic Tool Storage Unit
+ Plastic Dividers

430 PP



Item Weight Kgs	Item Weight lbs	Carton Weight Kgs	Carton Weight lbs
7,6	16,8	8,1	17,8



Fabric Tool Storage Unit
+ Plastic Dividers

430 BT



Item Weight Kgs	Item Weight lbs	Carton Weight Kgs	Carton Weight lbs
8,1	17,8	8,6	18,9

The master...

TOUGH CASE

SOLID DEFENSE AGAINST IMPACTS

MANO TOUGH CASES offer a surprising level of sturdiness. Special compound raw material used in the structure of the products provides utmost impact-resistance and flexibility. MANO TOUGH CASES are highly resistant against free-falls and can even resist the pressure of a vehicle passing over.

AIR PROOF, WATERPROOF AND DUSTPROOF

High performance gaskets prevent any leakage and prevent air, water and dust access.

CUSTOMIZABLE INNER SPACE

You have the possibility to practically organize the inner space of MANO TOUGH CASES in accordance with the dimensions of your equipment and provide your equipments extra protective barriers.

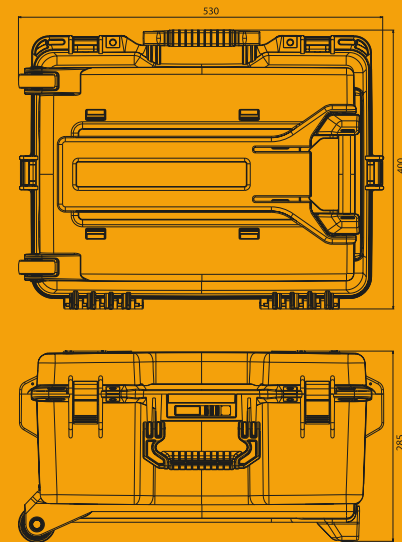
430 P

MTC430

Tough Case

Equipment safety under challenging conditions is a must for professionals. Sensitive devices are vulnerable against external effects, unpredictable extraordinary incidents and accidents. MANO TOUGH CASES surround sensitive devices just like a guard and eliminate the risk of damage.

Air proof, Waterproof and Dustproof. Excellent resistance against impacts. MANO TOUGH CASES are designed for professionals.



AVAILABLE COLOURS



YELLOW



ORANGE



SILVER



OLIVE



Tough Case / MTC 460 Mobile / Empty



STANDART FEATURURES

- Waterproof
- Impact Resistant
- Crushproof
- Podlockable
- Dustproof
- Latching System
- Soft Grip Handle
- Stainless Steel Hardware
- High Performance Gasket
- Pressure Release Valve



10

MANO TOUGH CASES provide full protection against corrosive effects of long and difficult journeys.



CASE SPECIFICATIONS

EXTERIOR DIMENSIONS

L 530mm x W 400mm x H 285mm

L 20,8" x W 15,7" x H 11,2"

INTERIOR DIMENSIONS

L 463mm x W 338mm x H 215mm

L 18,2" x W 13,3" x H 8,5"

WEIGHT (EMPTY) : 5,6 Kgs / 12,3 lbs

LID DEPTH: 55 mm / 2,1"

BASE DEPTH: 160 mm / 6,3"

TEMPATURE RANGE: Min -29 C (-20 F) Max 60 C (140 F)

AIRLINE CARRY-ON : NO

WATERTIGHT: YES



PACKAGING SPECIFICATIONS

Quantity per carton: 1

Carton dimensions

L 54 cm x W 41,5 cm x H 29 cm

L 21,2" x W 16,3" x H 11,4"

Carton Volume: 0,064 Cbm

Carton weight (no foam): 6,2 Kgs / 13,69 lbs

CERTIFICATION

IP67



AVAILABLE OPTIONS



LOCKING SYSTEM

Combination lock system can be added if needed.



Lid Foam + Plastic Dividers

460 PL



8 697444 387716



Lid Foam + Cubed Foam

460 C



8 697444 387723



Lid Foam + Padded Dividers

460 P



8 697444 387730

11

Customizable inner space



Plastic Tool Storage Unit
+ Plastic Dividers

460 PP 8 697444 387778

Item Weight Kgs	Item Weight lbs	Carton Weight Kgs	Carton Weight lbs
8,1	17,8	8,7	19,1



Fabric Tool Storage Unit
+ Plastic Dividers

460 BT 8 697444 387785

Item Weight Kgs	Item Weight lbs	Carton Weight Kgs	Carton Weight lbs
8,6	19,0	9,2	20,2



TOUGH CASE



Turkey

Discover
the potential



TOUGH CASE

www.mano.com.tr

