



made in Italy



# COMPANY PROFILE



# THE HISTORY

Established in 1935, since long ago ARDA has been identified as leader producer of drawing items. Everything related to geometric drawing, from school level up to technical and professional, finds complete fulfilment at ARDA .

Over the years has always developed a complete range of **drawing** products, **office** products, **white board** and **school accessories**.

ARDA now enjoying the results of important investments in an area in which has believed and still believes with enthusiasm and constant research on the products.

ARDA has always proposed soft and pleasant lines for innovating and functional products.

In the year 2000 ARDA acquired 100% of the ownership of the EUROILCA company in Cremona, also manufacturing technical drawing articles. This fundamental choice has enabled ARDA to double its producing capacity positioning the group as the European leader producer of articles for technical and school drawing.

In 2009 Arda bought Company ELLEMMEVI which was specialized in the production of drawing boards. This acquisition allowed Arda to expand its range including in its own production and sales a new and wide assortment of products for school and office.

The latest acquisition is that of the company ORNA Iplast, also a manufacturer of articles for technical drawing and specialized in the world of welded plastic. The acquisition of Orna has also brought to Arda the MUNARI brand, a historic leather goods brand specialized in high quality products for the desk, all strictly Made in Italy.

The group employs 60 people and develops on a covered surface of 18.000 square metres.

The sales net is composed of 13 agents in Italy and 6 agents abroad coordinated by one commercial responsible.

# THE HISTORY

At present ARDA is certainly leader on the Italian and European markets: more than 60% of the global sales are exported all over the world.

Among its customers, ARDA is proud to produce for national and international acquisition groups and world famous industrial firms.

For many years ARDA has been supplier to the major distribution's chains belonging to the Department Stores, giving the opportunity to mature an important experience both in Italy and abroad.

The French market in particular has been an important trial bench to test ARDA's capability to answer highly demanding customers' requests in terms of range, volume and punctuality as well as reliability of the service combined with the need for stocking the goods to grant the so called "tight flow"

In fact the force of the company relies on:

- A wide and complete set of products
- The capacity of producing big quantities with great flexibility
- Punctual and entrusting service

Today, thanks to many years of experience, ARDA feels confident in undertaking important engagements proposing itself not only as a simple supplier but also as a trusty and faithful partner.

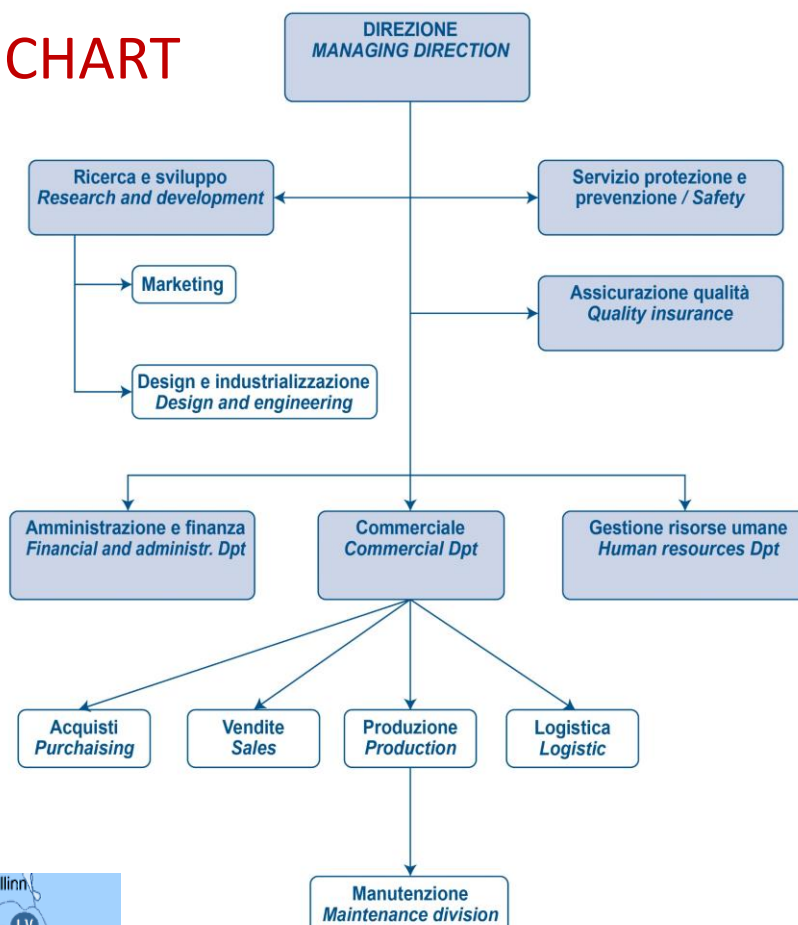
# THE GROUP

- PROPERTIES SQ M. 46000
- COVERED SURFACE SQ M. 18000
- PRODUCTION AREA SQ M. 8500
- STORAGE AREA SQ M. 8000
- MANAGEMENT AREA SQ M. 1500



# THE GROUP

## ORGANISATION CHART



## THE LOCATION



ARDA SPA Strada dei Frati, 7  
37019 Peschiera del Garda (VR) - ITALY



# THE PRODUCTS



## Disegno

Drawing items - Articles de traçage



## Accessori scuola

School accessories - Accessoires scolaires



## Polipropilene - PPL



## Lavagne - Writing boards - Tableaux



## Ufficio - Office items - Articles de bureau



## Visual communication



## Plastica saldata



## Munari



# THE PRODUCTION: facts and figures

## THE STRUCTURE

- 33 INJECTION MACHINES FROM 150 TO 1000 TON.
- 15 ROBOTIZED WORKING CENTRES FOR HOT PRINTING
- 2 WORKSHOPS FOR THE PRODUCTION AND MAINTENANCE OF MOULDS.
- 235 INJECTION MOULDS.
- MACHINES FOR COLOURING AND MIXING THE RAW MATERIALS

## THE STAFF

- 13 ADMINISTRATIVE AND COMMERCIAL EMPLOYEES
- 8 SPECIALIZED TECHNICIANS AND HEAD OF DEPARTMENT
- 40 WORKERS

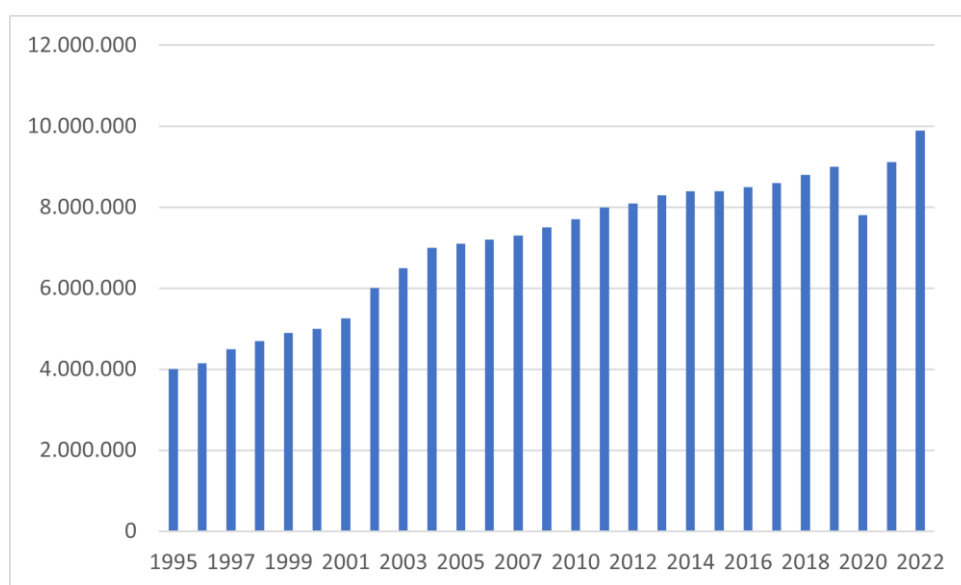
## THE CAPACITY

- MAXIMUM DAILY PRODUCTION CAPACITY  
DRAWING INSTR.. :250.000 pcs (24 h.)  
OFFICE ITEMS : 60.000 pcs (24 h.)
- WORKING SHIFTS:  
INJECTION DPT:16 HOURS (EXPLOITATION 63%)  
HOT PRINTING DEP.: 8 HOURS (EXPLOITATION 50%)  
LOGISTIC DEPARTMENT: 8 HOURS (EXPLOITATION 50%)

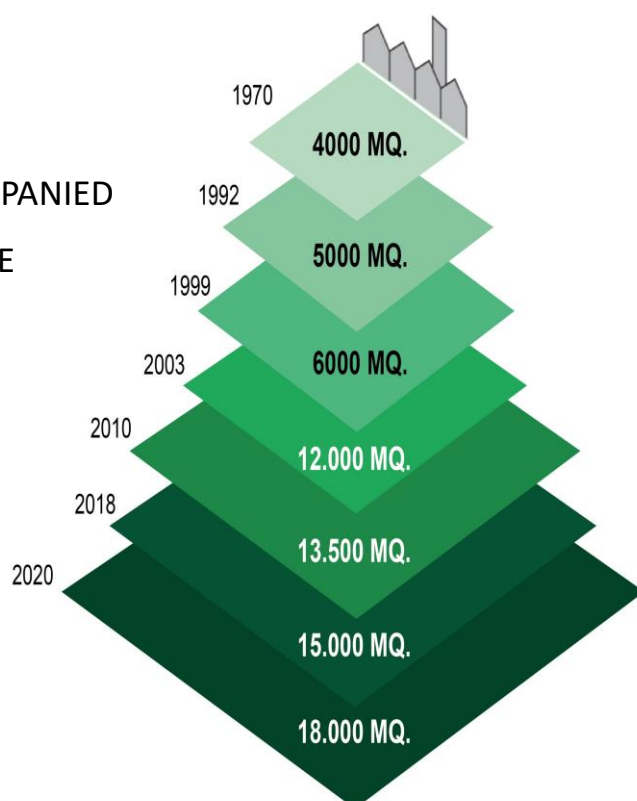


# THE COMMERCIAL AREA

THE SALES VOLUME SHOWS A CONTINUOUS INCREASE POSITIONING THE COMPANY, ESPECIALLY FROM 2000 ON, AS THE BIGGEST EUROPEAN PLAYER IN THE MARKET. STARTING FROM 1995 THE TOTAL TURNOVER HAS MORE THEN DOUBLED THANKS TO THE BIGGER PRODUCTION CAPACITY AND



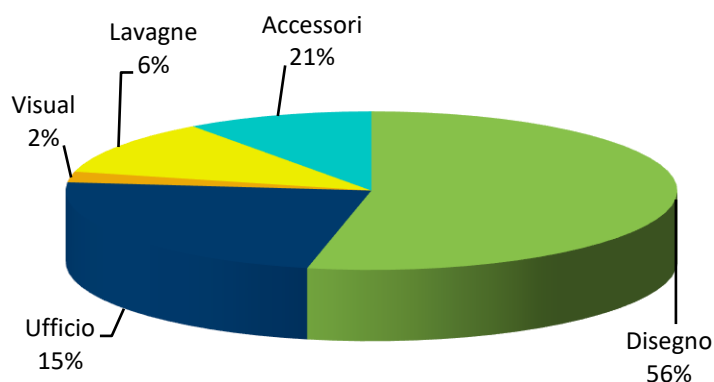
SIGNIFICAN INCREASES ESTATE ACCOMPANIED  
DURING THE YEARS THE SALES INCREASE



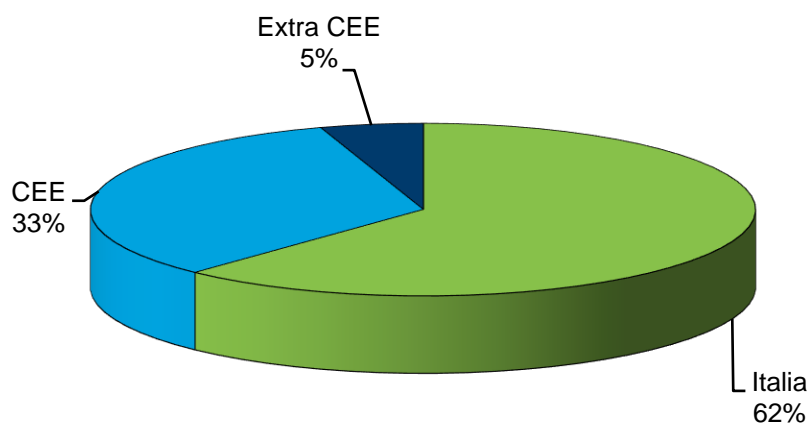


# THE COMMERCIAL AREA

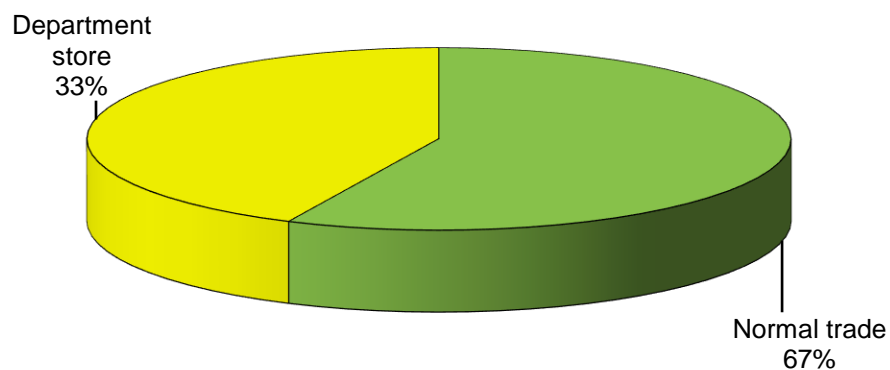
## BY PRODUCT



## BY AREAS



## BY CHANNEL



# LOGISTIC INFORMATIONS

## ITALY

WE CAN COUNT ON A WAREHOUSE OF 1500 SQUARE METRES IN NORTH OF ITALY FROM WHERE IT IS VERY EASY TO REACH ALL MAIN DESTINATION IN ITALY

## FRANCE

WE HAVE COOPERATION WITH A LOGISTIC SYSTEM IN CHALON SUR SAONE (close to Lyon)

## OTHER COUNTRIES:

WE OPERATE WITH LOCAL LOGISTIC SYSTEMS ACCORDING TO THE VOLUME OF THE DELIVERIES.



# OUR STRENGTH



**ARDA**



garantire un prodotto migliore, **SEMPRE**

Garantee a better product ALWAYS  
Garantire un meilleur produit TOUJOURS

**1 RICERCA E INNOVAZIONE**  
research and technological innovation  
recherche et innovation technologique

**2 DESIGN E MARKETING**

**3 QUALITÀ E SICUREZZA**  
quality and safety of products  
qualité et sécurité des produits

**4 RISPETTO DELL'AMBIENTE**  
respect of the environment  
respect de l'environnement

## THE PRODUCT AND THE PRODUCTION

- COMPLETE AND WIDE RANGE OF PRODUCTS
- HIGH PRODUCING CAPACITY
- PLANNING AND PRODUCTION FLEXIBILITY THANKS TO:
  - ALL THE PRODUCTION IS DONE DIRECTLY
  - INTERNAL GRAPHIC AND DESIGN OFFICE
  - INTERNAL MOULD CONTRUCTION AND MAINTENANCE

## THE COMPANY

- RELIABLE AND FAITHFUL SUPPLIERS
- CAPACITY OF SELF-FINANCING
- REINVESTMENT OF THE PROFITS IN THE COMPANY
- LAND AVAILABLE TO EXPAND THE COMPANY'S BUILDINGS

## THE SATISFACTION INTERNAL/EXTERNAL

- GOOD WORKING SURROUNDINGS WITH GOOD RELATIONSHIPS BETWEEN THE EMPLOYEES
- QUALITY AND RELIABILITY OF THE SERVICE
- FAITHFUL AND SATISFIED CUSTOMERS

# OUR POLICY TO PROMOTE SUSTAINABLE DEVELOPMENT

**Le nostre scelte per uno sviluppo sostenibile**  
**our policy to promote sustainable development**  
**nos choix de développement durable**



## **RISPARMIO ENERGETICO** ENERGY SAVING

Costante rinnovamento del parco presse e attrezzature connesse, sostituite con modelli che consentono un risparmio energetico di oltre il 50%

Constant renewal of machinery and associated equipment, replaced with models allowing energy saving of more than 50%



## **PVC FTALATI FREE** PHTHALATE FREE PVC

Ove utilizzato, il PVC è ftalati free, nel rispetto delle normative e a tutela del consumatore.

When used the PVC is phthalate free, a choice made for reasons of consistency and to safeguard the consumer.



## **RICICLO** RECYCLING

Gli scarti delle lavorazioni vengono riutilizzati per creare nuovi prodotti. Un corretto riciclo permette anche di ridurre i rifiuti immessi in discarica.

Production scraps are reused to create new products. Appropriate recycling also allows us to reduce the waste sent to the tip.



## **CHILOMETRO 0** LOCALLY AVAILABLE MATERIALS

Utilizziamo preferibilmente fornitori di materie prime vicini al nostro sito produttivo.

We prefer to use suppliers of raw materials close to our production site.

**ARDA®**

## MAIN PRODUCT

elastika®

L'unica  
che torna  
in forma  
Infinite flexibility



MADE IN ITALY  
PATENT





**ARDA®**

## MAIN PRODUCT



**ARDA®**

# MAIN PRODUCT





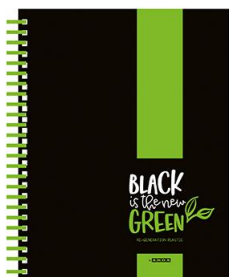
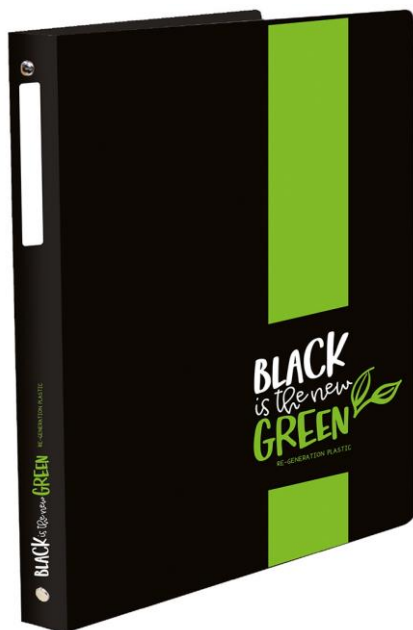


# MAIN PRODUCT





# MAIN PRODUCT







## MAIN PRODUCT







# MAIN PRODUCT



**ARDA®**

# MAIN PRODUCT





# THANK YOU FOR YOUR ATTENTION

and thanks to all our customers,  
employees and suppliers who have  
helped us grow over the years

