

SIGMA STORY

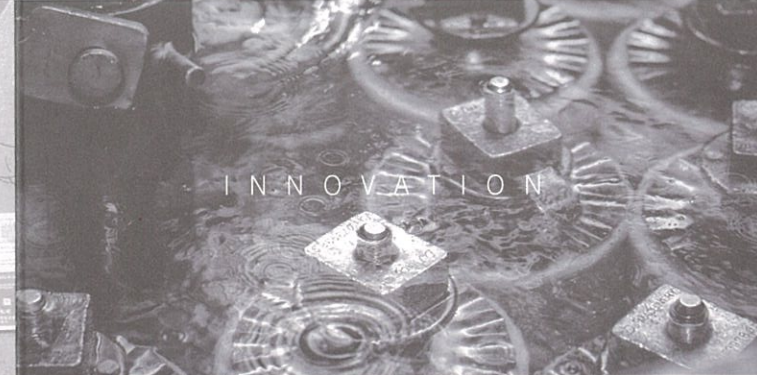
Sigma as a member of Chanco group, was established in 2015. We start from weaving, dying & printing, cutting & sewing, we have our own quality control systems with Japanese standard in place to insure quality consistency, and own logistics team to insure on time delivery. We can provide a complete supply chain.

An entire sewage disposal treatment facility was set up since establishment. We always have a strong awareness of the environmental protection. We are BCI cotton member, and have already got BSCI, OEKO-TEX, GOTS, Detox certificates, etc.

CHANCO STORY

Chanco, as an experienced and credited producer of home textile, was founded in 2003, is a forerunner in combining sustainability, high quality and home fashion. Headquarter is located in Shanghai, the design team is from Tokyo, and now we have grown into five production factories in China, Cambodia and Vietnam. We have a total production area of 1.5 million square feet, with over 2,800 staff employers.

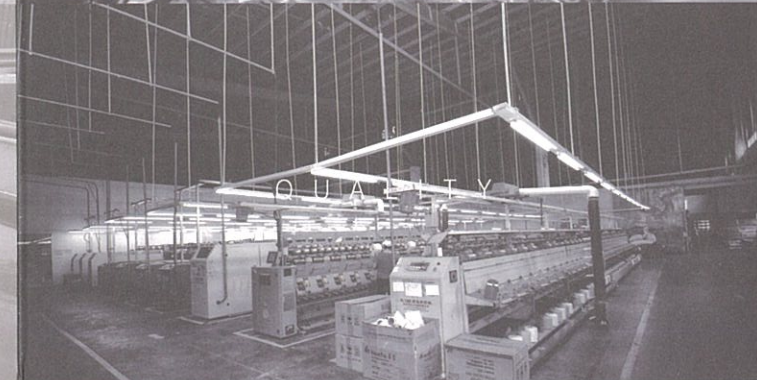
We boast a high number of returning customers and built long-term and trusting relationships with various clients in the Japan market. We have been Muji's sole China-based supplier for more than ten years; we have also received praise from clients in other global markets in the US and Europe.



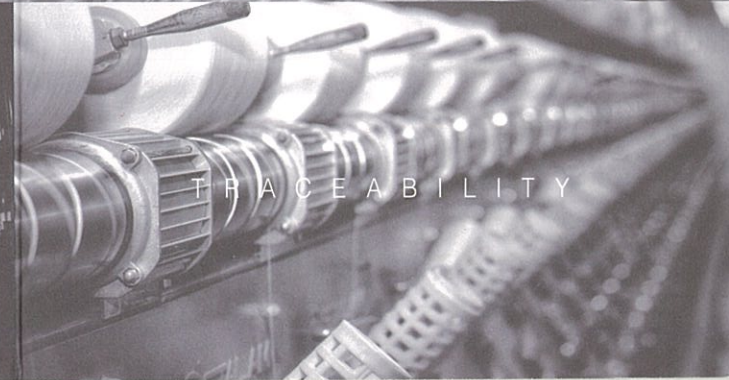
INNOVATION



ECOLOGY



QUALITY



TRACEABILITY

CHANCO

www.chanco.com.cn
www.sigmatex.net

SHANGHAI / TOKYO / VIETNAM / CAMBODIA

7 SUBSIDIARIES

SHANGHAI CHANCO ENTERPRISE DEVELOPMENT CO.,LTD

SHANGHAI SIGMA

SI-YANG SIGMA

SIGMA VIETNAM INDUSTRIAL CO.,LTD

SIGMA-LONG AN CO.,LTD

SIGMA COMBODIA

ビジネスエアポート 神田



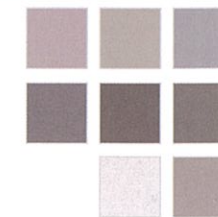
MONOTONE

100%LINEN
cm 50x75/66x66/80x80/240x220
Bedding
Living
Kitchen



GARMENT DYE

100%LINEN/100%COTTON
cm 50x75/66x66/80x80/240x220
Bedding
Living



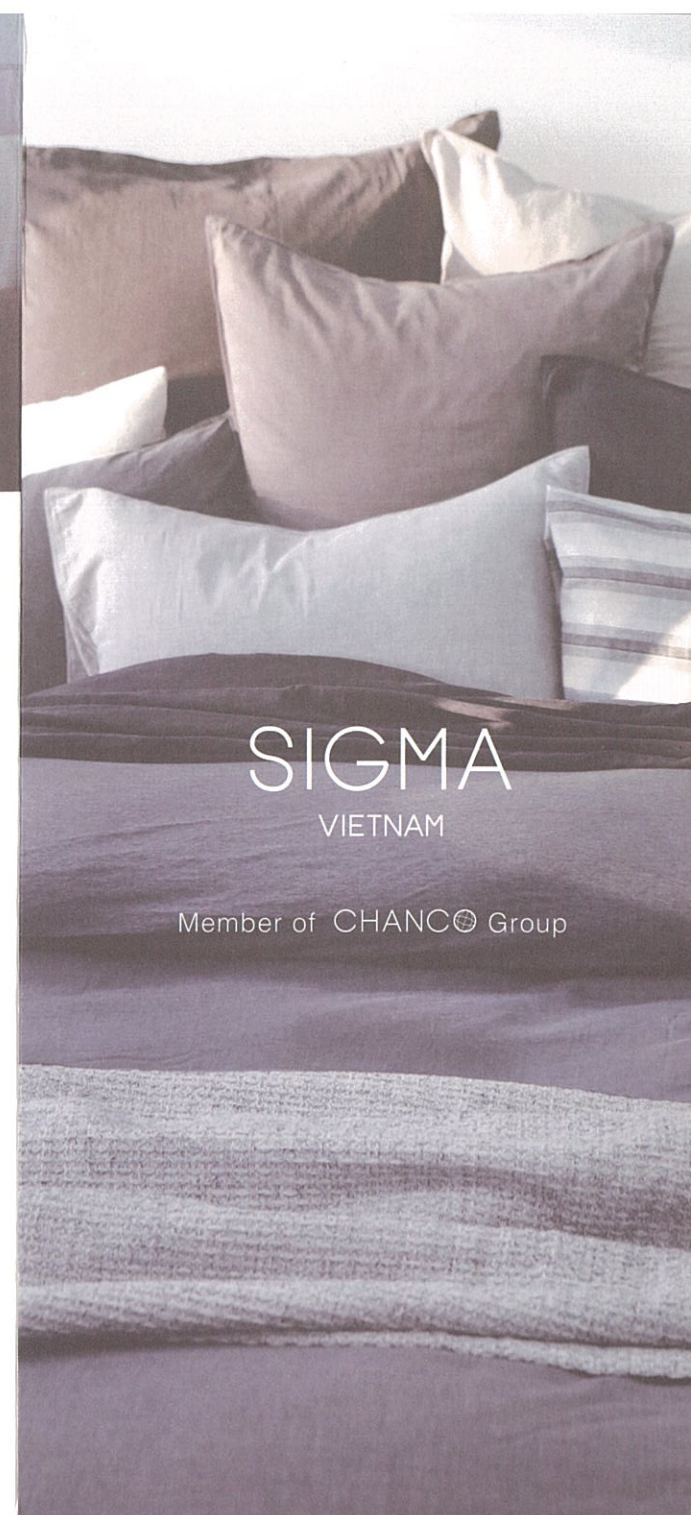
TOWEL BLANKET

100%COTTON
cm 70x140
Bath
Living



TOWEL

100%COTTON with LINEN Fringe
cm 34x75/70x140/140x200
Bath



SIGMA
VIETNAM

Member of CHANCO Group