



VERTICALLY INTEGRATED PASSIONATELY COMMITTED

www.mohanspintex.com

ABOUT MOHAN SPINTEX

Founded in the year 2005, Mohan Spintex has carved its own niche in the industry and seen an immense growth over the years. Being a pioneer in home textile domain, the company holds expertise in an absolute integration of Spinning, Weaving, Processing and Sewing.

At Mohan Spintex, the production facilities are armed with state-of-the-art technologies to meet global standards. The workforce is competent enough to keep pace with evolving technology.



PRODUCTS



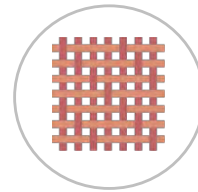
YARN

- Combed Compact Yarn
- Ply Yarn
- Open End Yarn



BED LINEN

Product Variants in Bed Linen are based on the purpose of usage, Climate and Tradition. Satisfying all the Global Needs we have a Compendious range of products.



FABRIC

Dyed, Printed and Ready for Printing /
Dyed fabric - Ready to cut and Sew for
Making Home Textile Products



FASHION BEDDING

Enriched with create free fabric, fashion bedding is
perfectly impeccable for every mood and style.

STATE-OF-THE-ART INFRASTRUCTURE



SPINNING

100% Cotton, Blends of Cotton with Polyester, Viscose, Modal, Linen, Lyocell.



PROCESSING

Reactive dyed solids, Prints of Pigment and Reactive.



WEAVING

Percale, Satin, Damask Stripe, Pin Stripe, Dobby, Jacquard.



MADEUPS

Sheet Sets (Flat, Fitted, Pillow case), Duvet covers, Comforters, Quilts, Pillow Shams, Euro shams, Bed skirts, Decorative Cushions, Throws.

TECHNOLOGY PARTNERS



KARL MAYER



EASTMAN

TRÜTZSCHLER

PICANOL



JUKI®

RIETER



USTER®
Think quality

muratec

**BRÜCKNER
MASCHINENBAU B**



PRODUCTION CAPACITY

- ✓ Spinning: 75 Tones finer yarns per day (30's to 100's)
- ✓ Weaving: 324 Looms (Picanol Air Jet) – 35 Million Meters per Annum
- ✓ Processing & Printing: 35 Million meters of Finished Fabric per Annum
- ✓ Cut & Sew: 18 Million Sheet Sets per Annum



PRODUCTION PER ANNUM

- ✓ 30,000 Tons Yarn
- ✓ 35 Million mtrs Fabric
- ✓ 3.75 Million Sheet Sets



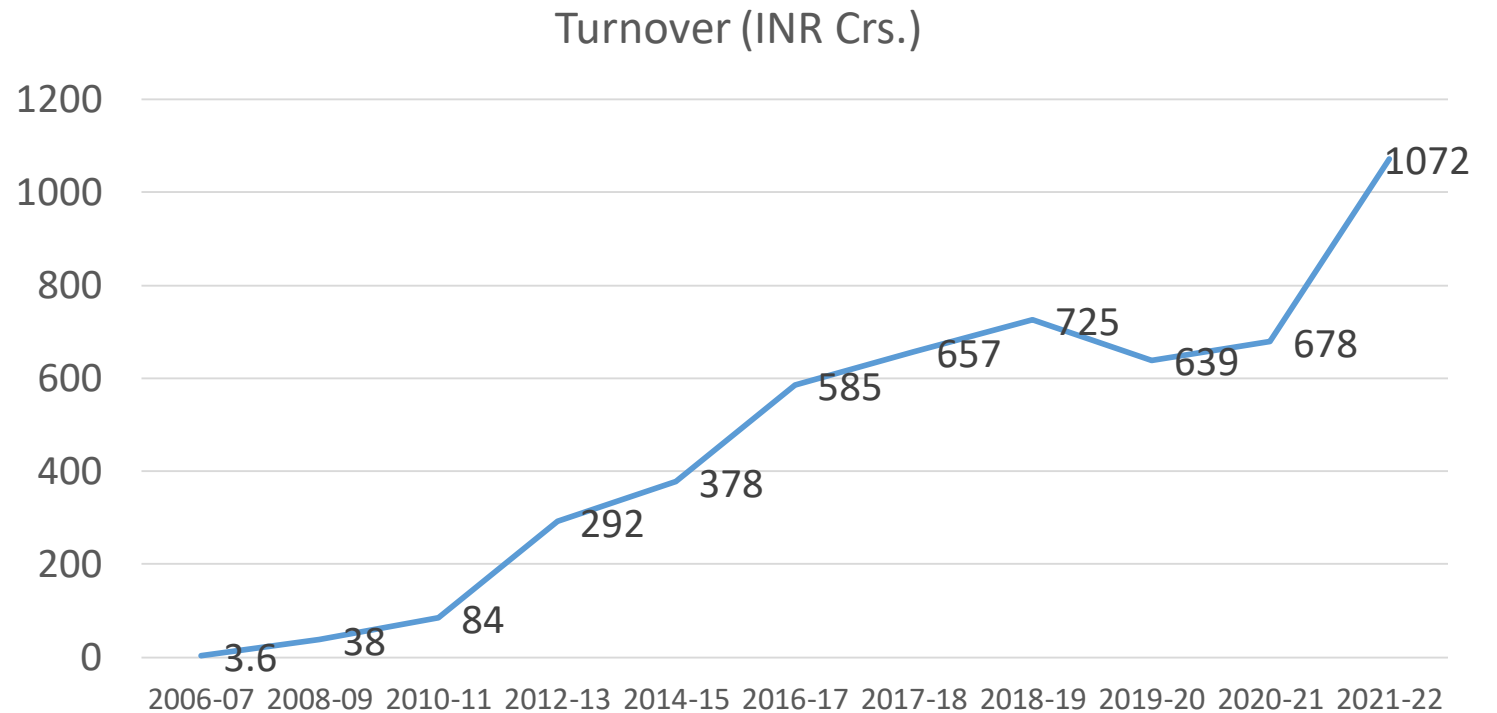
STATE OF ART TECHNOLOGIES

- ✓ Compact Spinning
- ✓ High Speed Air Jet Looms
- ✓ World Class Quality Laboratories



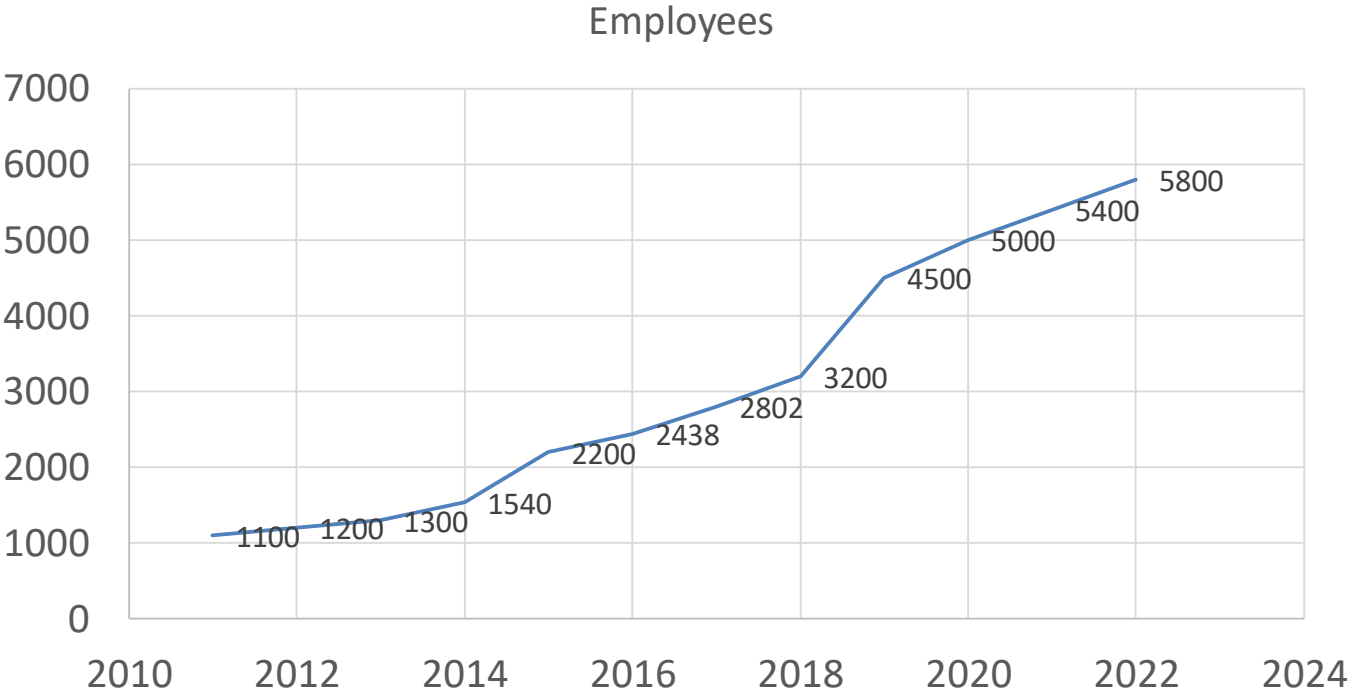
Turnover

Year	Turnover (INR Crs.)
2006-07	3.6
2008-09	38
2010-11	84
2012-13	292
2014-15	378
2016-17	585
2017-18	657
2018-19	725
2019-20	639
2020-21	678
2021-22	1072



Employees

Year	Employees
2022	5800
2021	5400
2020	5000
2019	4500
2018	3200
2017	2802
2016	2438
2015	2200
2014	1540
2013	1300
2012	1200
2011	1100



* 40% of the workforce are Women

Manufacturing Units



We have invested around \$ 200 Mn in creating vertically integrated Manufacturing facilities across 3 locations over the year near Vijayawada for manufacturing Bedding Products and the accessories

Manufacturing Units



Manufacturing Units





CLIENTELE



COMPLIANCE & CERTIFICATIONS

Social Certifications



Supply Chain Certifications



Quality production process management Certifications



Environmental Certifications

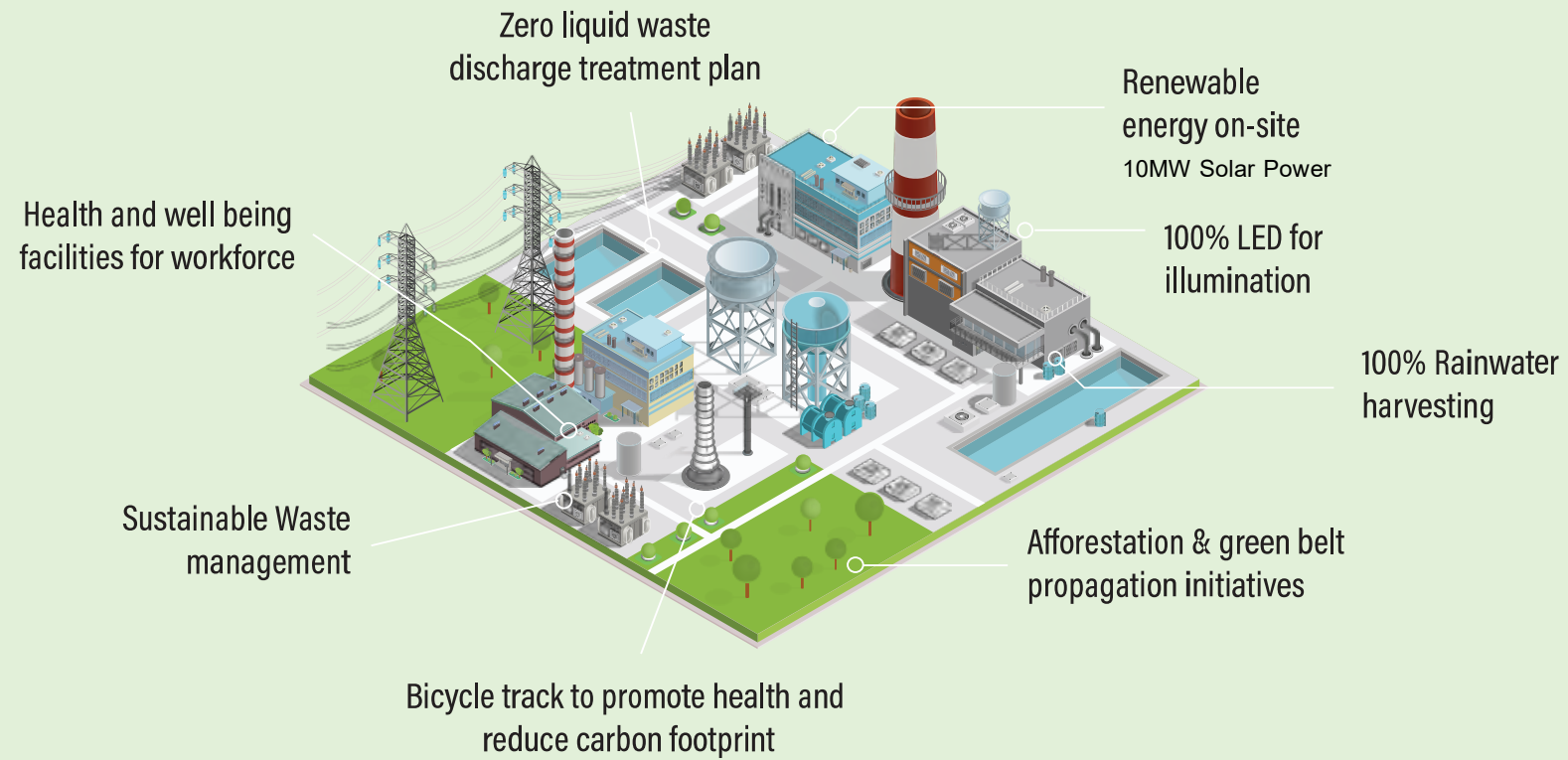


Under Process



OUR SUSTAINABLE INITIATIVES

The Factory is under
IGBC Green Factory
Certification



ROOF TOP SOLAR



**10.4MW Rooftop Solar Power Unit Inaugurated
Which avoids - 13,296 Tonnes Of CO₂/Annum
Equivalent To - 66,480 Trees Plantation**

Coal Free Steam Generation



CORPORATE SOCIAL RESPONSIBILITY

Education for under privileged

- Construction of Skill centers for providing training for unemployed Youth for self employment.
- **Providing financial support to poor meritorious students & infrastructure to schools in the villages**

Health and Hygiene

- **Adopted five villages under "Smart Villages Program" for various development activities**
- Construction of bio-toilets - 3 Villages have been made ODF (Open defecation free)

Women Empowerment

- 40 % of employment created

Farmers Upliftment

- Socio economic livelihood created for farmers by educating about optimal usage of Fertilizers, providing farm equipment etc.





THANK YOU

for making time to sit through this presentation.
It was engaging, informative, and fulfilling because
of your presence. We are extremely grateful.

www.mohanspintex.com