



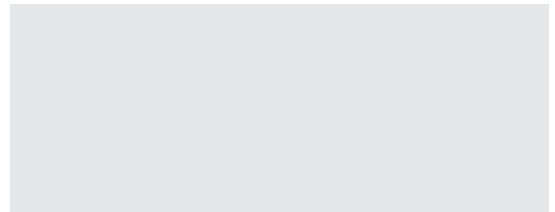
Classy. Comfortable. Colourful. Designs  
that live up to your imagination...

[www.sapanamats.com](http://www.sapanamats.com)

# *The Sapana Story*

When we first started manufacturing in 1984 our goal was to make unique products of the highest quality. We are today, as committed to excellence in our business segment as in the past. 2023 marks the company's 39th year of leadership in product quality, innovation and customer service. Today, Sapana is proud to serve the world with the industry's most complete selection of beautiful and affordable polypropylene mats.

Our products feature regularly in design blogs, international publications & TV shows.



## *Quality*

We have adopted the best manufacturing practices and use the most modern manufacturing and testing equipment to ensure that all products meet the demanding standards of customers the world over and the local regulations in each market.



*Our products can be found at leading  
retailers across the world.*

 **TARGET.**

**HOMEBASE**  
FEELS *good* TO BE HOME

*home* **bargains**

**LeenBakker** 

**Casaideas.**

 **IKEA**®

 **B&Q**

**H&M**

**LEROY MERLIN**  
*Z Nami Sie Uda*

**COST PLUS**  
**WORLD MARKET.**  
WORLDMARKET.COM

habitat 

**CB2**

**BRICO** 

**OBI**®

**DEPOT**

 **LOWE'S**®

**HORNBACH**   
Es gibt immer was zu tun.

**danica**  
THE COMPANY YOU KEEP

**castorama** 

**MAISONS**  
DU MONDE  
MEUBLES & DÉCORATION

 **FabHabitat**  
LOVE YOUR WORLD, LOVE YOUR HABITAT

# Manufacturing



## *Socially Responsible & Quality Conscious*

We are proud to say that not only do we make the best products but the products are manufactured in a safe and clean, work environment for our workforce.

Our plants are BSCI, SMETA, GRS and Goodweave certified. Our products are also certified for Oekotex.



## *Environmental Impact*

We have a strong sense of commitment to our planet and are constantly redesigning our manufacturing processes to be more energy efficient.

We are also replacing our main raw materials with recycled raw materials without compromising on the aesthetic and functionality of the product.

Our products are made using Solar energy and till date we have effectively saved 30,893 trees. All of our waste is recycled and we use flexible reusable packing for our products.



## *Inhouse Designing Facilities*

We have a design team who can create a product line from the trend boards or inspirations given by the customer.



## *Our Strengths*

Largest capacities in the industry

Known for quality

Socially compliant manufacturing

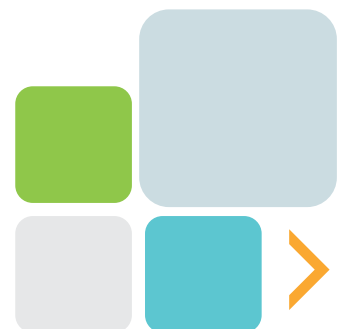
Inhouse product design team

Awarded the top mat exporter award for several years

Range of packaging options

In-house Testing Facilities

## *Awards*





FL-18



FL-13



FL-01



FL-04



FL-19



FL-10



FL-11





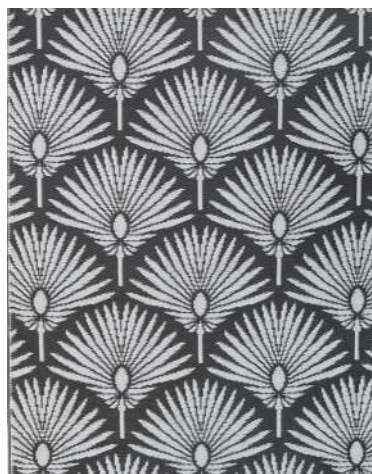
FL-30



FL-31



FL-32 RUST



FL-32



FL-33



FL-34



FL-35



FL-36



FL-37

FLORAL



CL-62



CL-60



CL-16

CLASSIC



CL-20 WHITE BLUE



CL-21 RED



CL-22 BLACK



CL-61



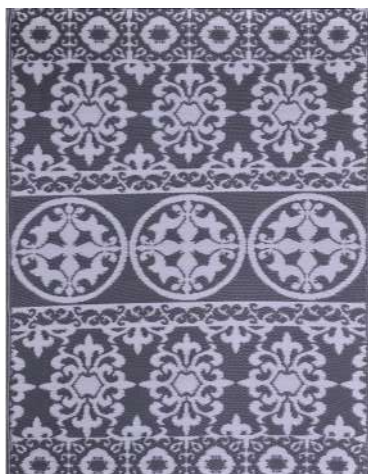
CL-26 BLUE



CL-30



CL-31



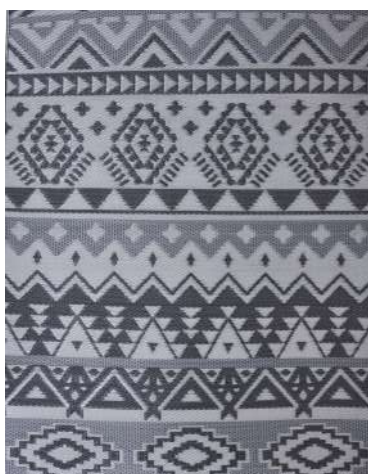
CL-32



CL-37



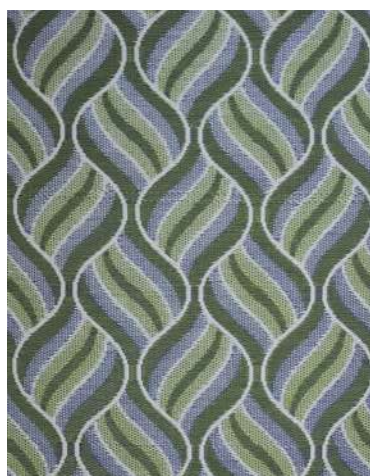
CL-39 BLUE



CL-40



CL-41



CL-42



CL-49 ORANGE



CLASSIC

CLASSIC



CL-52



CL-53



CL-54



CL-55



CL-58



CL-64 White



CL-64





GM-15 CELERY



GM-16 BLACK



GM-18 BLUE



GM-18 GREY



GM-30 BLACK



GM-31 GREY



GM-32 BLACK



GM-33 BLUE



GM-34 BLACK

GEOMETRICS

GEOMETRICS



GM-61



GM-55



GM-42



GM-43 BACK



GM-49 FRONT



GM-50



GM-51



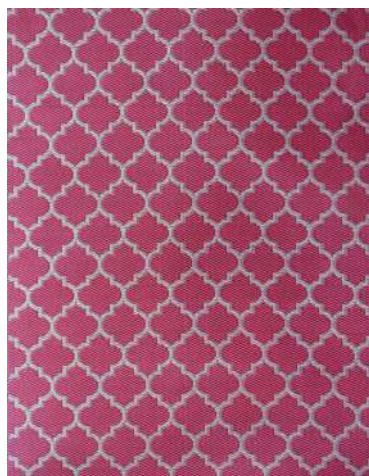
GM-52



GM-53



GM-64 GREEN



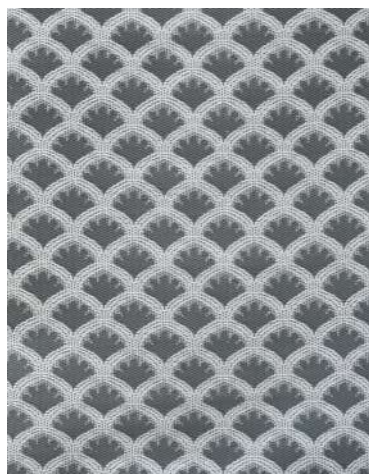
GM-64 PINK



GM-65 BLACK



GM-65



GM-66



GM-67

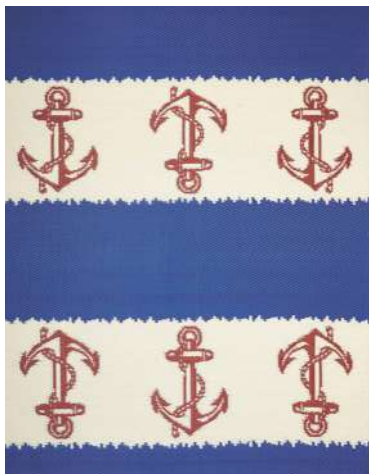


GM-68



GEOMETRICS

MODERN



ANCHOR



MD-01 BLUE



MD-02 GREY



MD-06 GREEN



MD-11 BLUE



MD-14



MD-19



MD-26



MD-27



ZEBRA



ANIMAL



IKAT CHEVRON BLUE



METRO CHEVRON



SIKSAK

CHEVRONS



IK-04 BLUE



IK-04 GREEN



IKATS

KILIMS



FH-05 BLACK



FH-05 BLUE



KL-04

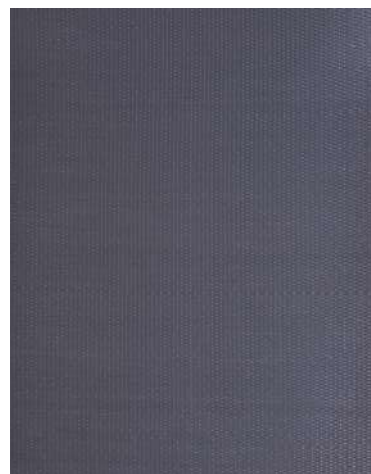
RATTAN & SOLIDS



RT-01



RT-02



RT-04

ROUND MATS



BENARAS



ROUND 1



ROUND 2



ARSPM-01



ST-03 BLACK



ST-04 BLUE



ST-01 BLACK



ST-11



STRIPES

## PACKAGING OPTIONS



PDQ Box



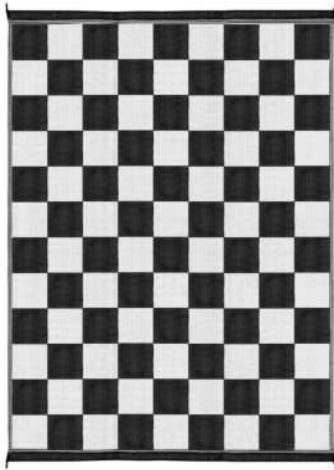
PDQ with Pallet Feet



PDQ with Shroud



Polybag Packing



RV-01



RV-02



RV-03

RV MATS (9x12)



RV-04



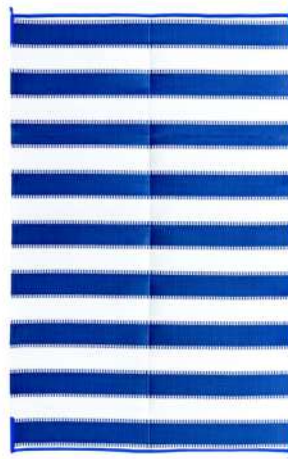
RV-05



RV-06



RV-07



RV-08



RV-09


## PACKAGING OPTIONS




RV MATS (9x12)



## Sapana Polyweave Pvt. Ltd.

 F-501, Lotus Corporate Park, Off. Western Express Highway,  
Goregaon (E), Mumbai - 400 063, India.

 +91-22-69806300

 nishith.gupta@sapanamats.com

 [www.sapanamats.com](http://www.sapanamats.com)

