

Our Sustainability Mission

PEOPLE | PLANET | PROSPERITY



1888 MILLS

Weaving a Better World®

— GLOBAL —

TABLE OF CONTENTS

4	THE MISSION
5	GLOBAL LOCATIONS
6	RAW MATERIALS
7	CERTIFICATIONS
8	NATURAL GAS & HEAT CONSERVATION
11	PACKAGING & TRANSPORTATION
13	RECOGNITION
14	SUSTAINABLE PRODUCTS
16	END OF LIFE > NEW LIFE
17	SOCIAL RESPONSIBILITY



This booklet walks you through a synopsis of the life cycle of our products. From raw materials to end of life, 1888 Mills Global is committed to sustainable business practices. This commitment extends to every facet of our business and guides our plans for sustainable growth.

THE MISSION

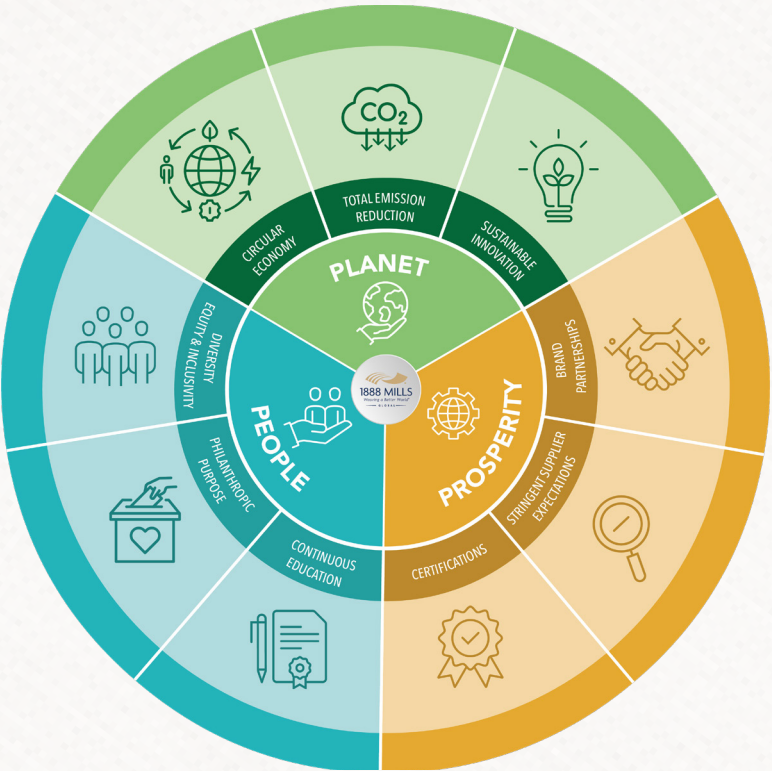
Consistent with our Brand Purpose of ‘Weaving a Better World’, we at 1888 Mills Global believe that it is our responsibility to our stakeholders and the economic regions where we operate, to drive innovation in the global marketplace by executing initiatives that promote environmental stewardship and contribute to poverty reduction.

Our framework for sustainability encompasses environmental and social objectives within our business that impact our world. With our 15,000 associates, we have a profound influence on the communities we serve through the promotion of education, technology, health care and job creation.

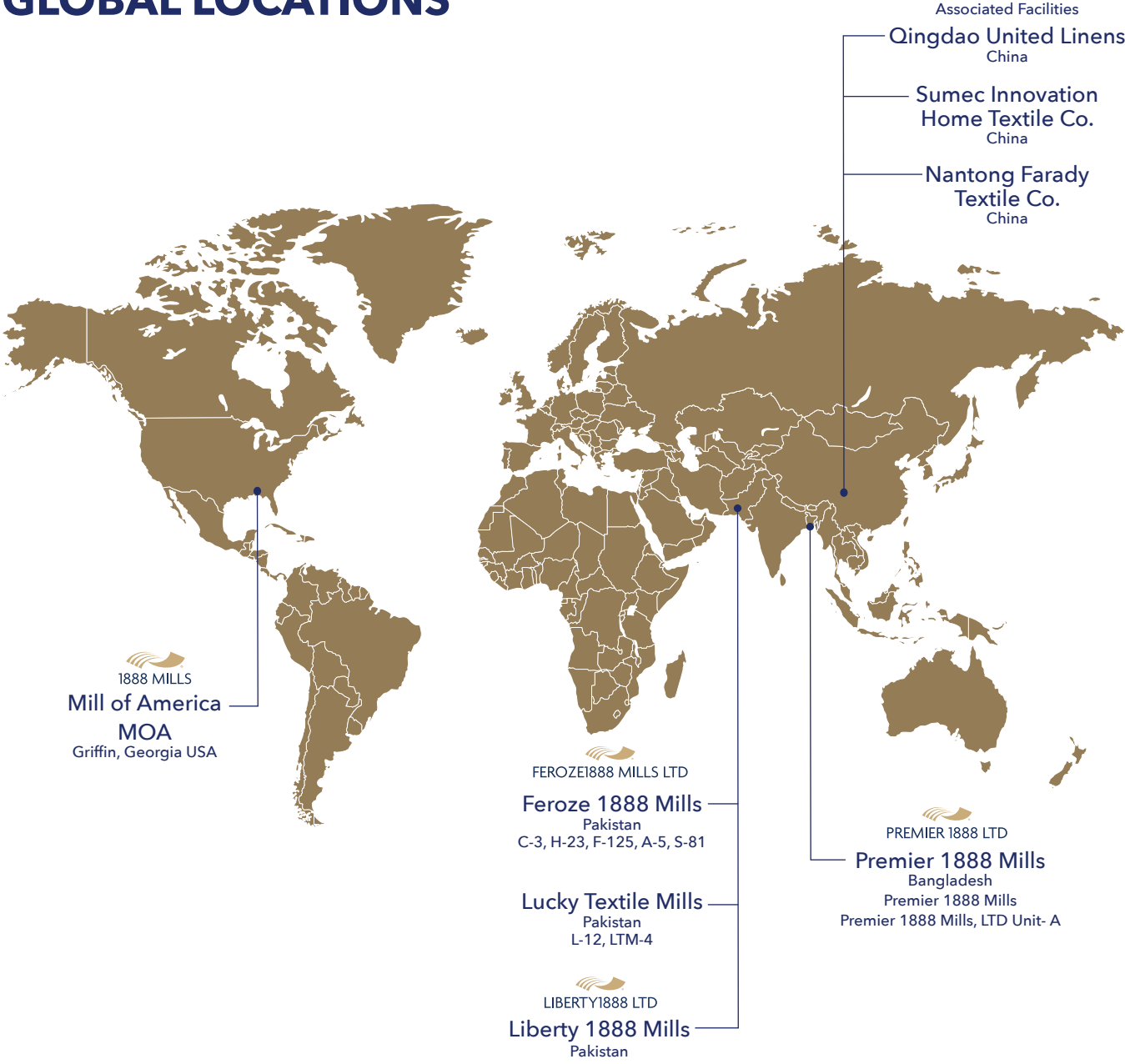
1888 Mills has adopted a Triple Bottom Line approach to measure our success:

People, Planet, and Prosperity.

We continually strive for improvements in our processes through Lean Six Sigma, Waste Management and an Environmental Management Policy. Recognizing that sustainability is multifaceted, our product lines promote energy savings, as well as environmental and social responsibility.



GLOBAL LOCATIONS



RAW MATERIALS

1888 Mills Global is committed to managing renewable resources responsibly. Through strategic partnerships with global organizations, we are able to ensure the exchange of good practices throughout the complex, farmer to retailer supply chain.

The Better Cotton Initiative (BCI) - A holistic approach to sustainable cotton production. 1888 Mills supports the on-going commitment and continuous improvement to create production criteria for sustainable cotton farming.

1888 Mills' preferred yarn purchase is **BCI**, as per customer requirement under the *Cotton from More Sustainable Sources (CMSS)* program.

FIBER CERTIFICATION

Here is a list of trusted organizations that 1888 Mills uses to create a clear and unambiguous understanding of our strict sustainability standards:

- *GOTS Certification (Global Organic Textile Standard)*
- *Oeko-Tex Fiber Certification* - An Independent testing certification system that tests textile products from all stages of production.
- *Lenzing Group* - A world leader in high-quality, botanic cellulose fibers with high standards for sustainable production.
- *Aid by Trade Foundation* - An organization that is committed to sustainable cultivation & agriculture, as-well-as improving cotton in regions of Africa, allowing for improved trading and living conditions for the farmer.

CERTIFICATIONS

All of the 1888 Mills manufacturing facilities maintain certifications that establish environmental credentials and best practices. These strict standards help 1888 Mills minimize it's impact on the environment and maintain ethical work environments globally.

CERTIFICATIONS	MOA	FEROZE	LIBERTY	LUCKY TEXTILES	PREMIER
ISO 9001-2015		•	•	•	•
ISO 14001-2015	•	•	•	•	•
ISO 17025-2005		•			•
Oeko-Tex 100	•	•	•	•	•
OHSAS 45001		•			•
SA-8000-2014		•	•		
GOTS	•	•	•	•	•
STeP		•	•		•
OCS			•	•	
GSV		•			
GRS		•	•	•	
CMIA			•		
BSCI			•	•	•
WCA		•			•
WRAP				•	
SCAN (Security)		•	•		
SEDEX		•	•		•
RCS		•	•		•



NATURAL GAS & HEAT CONSERVATION

As a global textile company, 1888 Mills recognizes that climate change is a significant environmental concern, and that reducing GHG emissions can help protect the planet. We continually evaluate and innovate at our global facilities. The following projects are currently in practice within our manufacturing facilities:

SOLAR TURBINES

This machine recovers exhaust heat, saves natural gas, and keeps exhaust from being emitted into the environment.

MICRO MODULATION BOILERS

Special controls installed on our boilers, conserve energy by measuring emissions and providing only the minimum level of fuel needed to generate steam.

GAS VS. PROPANE

1888 Mills employs a dual fuel system. If natural gas demand in the surrounding community is high, we switch to propane tanks. When our propane tanks are activated, we save enough natural gas to heat 5,309 households for one hour.

HEAT RECYCLING

Exhaust ducts within our facilities route hot air to other operations, reducing the need for natural gas to generate this heat.

HEAT EXCHANGE

Hot waste water is used to heat incoming clean water reducing the need for natural gas to generate this heat.

TURBINE HEAT RECLAMATION

1888 Mills reclaims steam that is generated during production. Instead of this steam wasting away into the environment, we use it to generate energy. An average 5.5 to 6 TPH (Tons per Hour) steam is being generated from the

MOA uses a dual fuel system that saves enough gas to heat 5,300 homes for an hour!



exhaust heat recovery boiler of turbine c-40 at average load of 1850 KWhrs, saving of 440 to 480 m3 of natural gas per hour.

MCS ROPE WASHING MACHINES

This machine allows a larger production capacity with less consumption of water and energy resources.

WASTE WATER TREATMENT & RECYCLING

The Primary Purpose of water treatment is public safety and environmental safety/health. Through reverse osmosis, all harmful substances such as chemicals, soap and human waste are removed before the water returns to the environment.

WATER RECLAMATION

Rain Water is collected at our facilities and reused for manufacturing.

ULTRA FILTRATION PLANT

Our mills have installed filtration plants that recycle 250,000 gallons of water per day. This provides 240 m3 per day in water savings from recirculation of WTP back wash water and counter current flow system in the wash box.

FLUORESCENT PHILLIPS LIGHTING

Our mills use energy efficient lighting systems to reduce energy costs. Daily, 1070 KW of electricity is being saved by installing 6500 LED tube lighting. An additional 471.42 KW of electricity is being saved daily by installing needle point LED spot lights in the sewing rooms.

DAYLIGHT PROCESSING

By using day light as processing shade, we are saving 342 KW of electricity per day.

Our goal is to
achieve a 20%
absolute reduction
in emissions
by 2030



SOLAR ENERGY

1888 Mills has installed a solar energy plant at one of our locations. Solar energy currently accounts for 22.5% electricity of total consumption at this plant.

YARD WASTE RECYCLING

Nothing goes to waste, 1888 Mills uses a back-winding process to recover yarn discarded during production.

SHEARING WASTE

Sheared Loops are collected and baled. These bits of cotton are sold to third party brokers. Sporting goods manufacturers use our discarded loops as stuffing for sporting equipment.

CHEMICAL WASTE

To ensure that pollutants do not enter the environment, 1888 Mills collects discarded chemicals in collection tanks, and works with licensed agents to keep waste from entering the environment.

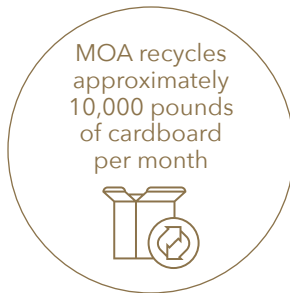
POLYTHENE RECYCLING PLANT

1888 Mills has installed a plant to reduce the polythene waste. The plant recycles almost 90,000 kg per month (fresh & recycled).



PACKAGING & TRANSPORTATION

Our sustainable packaging policy is embedded into every packaging and new product initiative at 1888 Mills. Specific considerations include the identification, evaluation and use of environmentally friendly packaging materials such as plant-based materials; minimizing the overall amount of packaging materials consumed; and optimizing designs for transport efficiency.



SHIPPING MATERIALS

RECYCLED CONTENT

Our warehouses and mills use recycled content corrugate and poly liners for shipping. (up to 35% recycled content)

RECYCLING PROGRAMS

We take part in recycling programs that purchase and re-use our corrugate, poly liners, and string waste.

EXTENDED BOX LIFE

1888 Mills gives extended life to our corrugate boxes by re-using them when shipping between our internal mills and warehouses.

PALLET SHARING PROGRAM

1888 Mills Participates in a pallet-sharing program with CHEP. We purchase their pallets and report where we sent them. CHEP recovers those pallets for re-use.

BALE PACKS

When possible, we use compressed bale packs instead of corrugate to increase container loads by up to 70%.

SPACE PLANNING

CAPE PACK SOFTWARE

Our mills use pallet pattern and container fill software called Cape Pack. This software maximizes container space, improves material and cube utilization, helps avoid empty space, saves CO2 emissions, and speeds up loading and unloading.

CARBON NEUTRAL

UPS CARBON NEUTRAL PROGRAM

We participate in the UPS Carbon Neutral Offset Program. This program helps balance out the emissions created by the shipment of our product.

UPS gives back to certified third parties that help with reforestation, land-fill gas destruction, waste water treatment, and methane destruction.

SUSTAINABLE PACKAGING

TOXIN TESTING

Third Party testing labs are used to ensure that our packaging materials are free of harmful toxins.

ALTERNATIVE MATERIALS

We use alternative packaging materials such as soy-based inks, synthetic papers made from stone, recycled-content papers, and seed-embedded papers.

BEDDING BAG ALTERNATIVES

1888 Mills offers a wide variety of alternatives to vinyl bedding bags such as: self-fabric, PEVA, EVA, and RCO-EXPE

FSC PAPER

We purchase FSC Certified Papers (Forest Stewardship Council) which uses wood pulp derived from organizations that meet strict federal and international laws that regulate sustainable forestry.

RECOGNITION



Project Gigaton is a Walmart's initiative to reduce one billion metric tons (One gigaton) of greenhouse gases from the global value chain by 2030. 1888 Mills has the highest status awarded by Walmart in recognition of our efforts towards Walmart set goals. ***Our Status is Giga Guru.*** Overall CO2 Savings by the year 2021 was 61,525.7 MtCo2.

1888 Mills was awarded the ***Walmart Canada Sustainability Award for Home*** for 2020 specifically for our innovative solution transitioning from plastic to recyclable cardboard hangers.

SUSTAINABLE PRODUCTS



ENERGY SAVINGS

Quick Dry

Dries quicker in the dryer saving energy and time



Guest Ready (Whole Solutions™)

Anti-microbial finish eliminates need to pre-laundry saving on water, gas, electricity, chemical usage



DURABLE / LONG LIFE

EnduraWeave™

This durable base construction prolongs the life of the towel



Freshee™

Powered by Intellifresh™, these line of home textiles feature a built-in odor protection so they stay fresh and clean smelling use after use, wash after wash.



DIRT TO SHIRT

Made Here™

100% Made in USA product, that is made from Cotton that is grown, spun, and woven in the USA. This product saves on transportation/shipping costs.



Naked™ (Modal® Body) Fibers

Beechwood fibers are processed in a closed loop processing system to reduce the release harmful chemicals into the environment



Seakeeper™ by 1888 Mills

products are produced from a blend of cotton and high quality 100% post-consumer recycled polyester yarn.

END OF LIFE > NEW LIFE

RECYCLED

1888 Mills' focus on solid waste reduction has spanned from our North American operations to factories around the world. Our goal is to recycle and reuse what some may consider "waste". We're committed to reclaiming and transforming our valuable resources into beautiful products that are themselves recyclable.

RECYCLED CONTENT PRODUCT

RPET (Recycled Polyethylene Terephthalate)

Portions of product can be produced from polyester recycled from plastic bottles that were gathered by approved bottle plants.

Foundations™ Lightweight Comforter Inserts

These bedding comforters have cover fabric that is made from 100% recycled polyester, and can be used in hotels around the world.

Regenerated Content Product

Unused cotton fibers from manufacturing are re-spun into cotton yarns to reduce unnecessary waste.

Charitable Contributions

Overruns and extra samples are generously donated to disaster relief efforts and organizations such as The Red Cross and The Salvation Army.

SOCIAL RESPONSIBILITY

1888 Mills Global has built an enduring legacy as an industry leader when it comes to supporting the health, safety and well-being of the individuals who work for us and the communities where our offices and manufacturing facilities are located.

EMPLOYEE PROGRAMS

Adult Literacy Program

Educational opportunities to teach employees to read and write.

Scholarships

Annual scholarships are offered to the children of employees in the USA, as well as, Child Education Assistance offered in our overseas facilities.

Meal Plans

Subsidized meals are offered to our locations.

Financial Aid

Provided to employees during times of hardship.

Flood Relief Programs

During times of global disaster, aid is offered to employees for recovery.

Weaving a Better World Day

1888 Mills holds a global corporate holiday each year to remind every member of the 1888 Mills family of their impact on the world and each other.



47%
of the 1888 Mills
global workforce
are women.

1 out of 3
in leadership
are women.

HEALTHCARE

Medical Clinics and Ambulance Service

Clinics are available at our locations free of cost to employees.

Red Cross CPR Certified Training

Medical training is provided for management and section leaders at all USA manufacturing facilities.

Tabba Heart Institute

A state of the art Cardiac Facility available to employees.

HEALTH AWARENESS

Health Mela

An event organized for staff, and their families to visit doctors and be treated free of charge.

World Heart Day

A day when employees can visit the factory physician and have their blood pressure checked.

Blood Donation Days

World Diabetes Day

A day when employees can visit the factory physician and have their blood sugar checked.



1888 MILLS

Weaving a Better World®

— GLOBAL —



1888 MILLS



FEROZE1888 MILLS LTD



LIBERTY1888 LTD



PREMIER 1888 LTD

www.1888Mills.com



www.facebook.com/1888MadeInUSA



www.pinterest.com/1888Mills



[@1888Mills](https://www.instagram.com/1888Mills)

The information contained in this booklet was prepared by 1888 Mills, LLC

For internal use only by 1888 Mills, LLC.

NOT FOR SALE OR DISTRIBUTION

©2022