



Healthcare Laundry and Protective Garments Specialist

#### AB EXPORTS

🏠 Lasani Pulli, Near Khayaban Gardens,  
Sargodha Road, Faisalabad-Pakistan.  
☎ +92 41 8817301 - 5  
☎ +92 41 8817403, 8817207  
✉ info@ab.com.pk  
🌐 www.ab.com.pk

#### AB COLORS

🏠 10-km, Sargodha Road,  
Faisalabad-Pakistan.  
☎ +92-41-8868853-55  
☎ +92-41-8868858

#### AB WEAVING

🏠 Plot No 67-M3 Industrial Area, Sahianwala  
Faisalabad-Pakistan  
☎ +92-41-8900015-18

#### AB FABRICS

🏠 19-km off Multan Road, Near Baghdadi House  
Lahore-Pakistan

#### Our Specialities

- Textile Fabrics
- Home Textiles
- Health Care Textiles
- Hospitality Textiles
- Flames Retardant Fabrics
- Lining / Pocketing Fabrics
- Uniforms

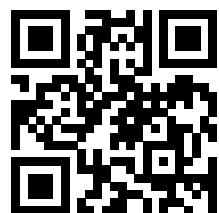


**Exports Pvt. Ltd.**

Healthcare Laundry and Protective Garments Specialist



Designed & Printed By: *elegant* Email: info@ab.com.pk www.ab.com.pk



We deliver  
**CUSTOMER**  
SATISFACTION

## Product Catalog

www.ab.com.pk





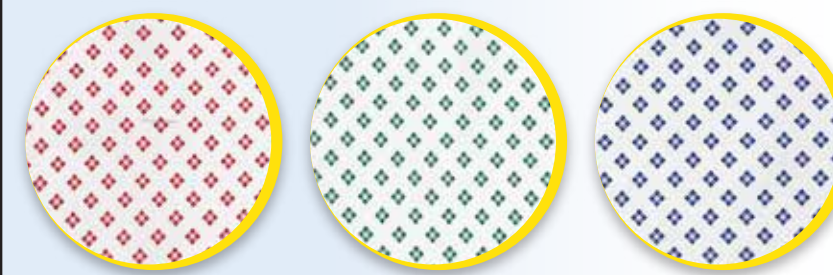
# The Solution for all your Healthcare Needs



**Diamond Design Gown**

Gender	Sizes	Style	Material
Unisex	S to XL	Overlap with Laces	Poly Cotton

Perfect for  
• All Practices



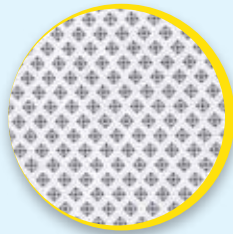
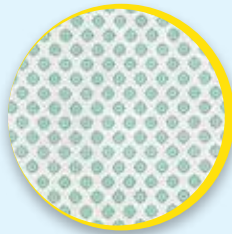
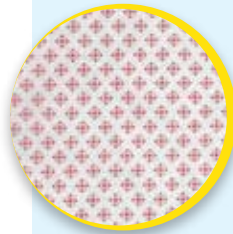




**Tahaborg Gown**

Gender	Sizes	Style	Material
Unisex	S to 4XL	Steel Snap Button	Poly/Cotton Non Brushed/Brushed

**Perfect for**  
• All Practices



**Hospital Property Gown**

Gender	Sizes	Style	Material
Unisex	S to XL	Overlap with Steel Snap Buttons	Poly Cotton

**Perfect for**  
• All Practices



**Hospital Property Gown**

Gender	Style	Color	Material
Female	One Side Opening with Plastic Buttons	Blue	Polycotton

**Perfect for**  
• All Practices



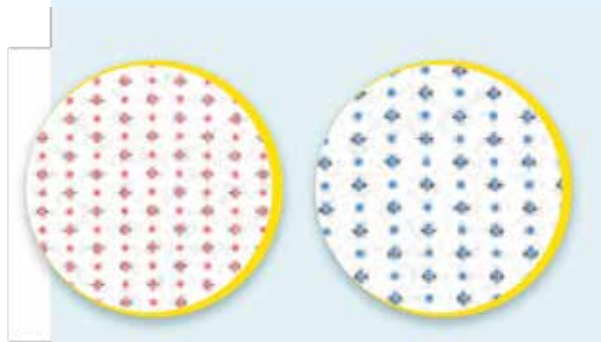


### Night Dress Gown

Gender	Sizes	Style	Material
Female	S to XL	Reversible Gown	Poly Cotton

#### Perfect for

- Pediatric Practices
- Pregnancy



### Baby Gown

Gender	Sizes	Style	Material
Unisex	XS to S	Overlapping with Laces	Poly Cotton

#### Perfect for

Family Practices





**Embroidery Logo Gown**

Gender	Sizes	Style	Material
Unisex	S to XL	Overlapping with Laces	Poly Cotton

Perfect for

- All Practices



**Arsh Design Gown**

Gender	Sizes	Style	Material
Unisex	S to XL	Overlapping with Laces	Poly Cotton

Perfect for

- All Practices







**Synergy Design Gown**

Gender	Sizes	Style	Material
Unisex	S to XL	Overlapping with Laces	Poly Cotton

**Perfect for**

- All Practices

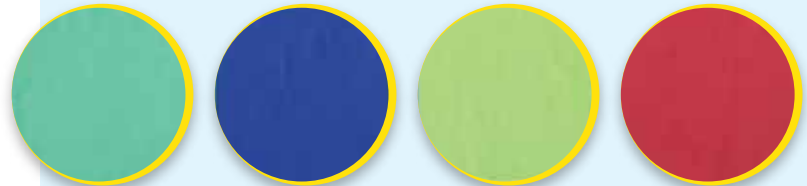


**Dyed Gown**

Gender	Sizes	Style	Material
Female	S to 2XL	Round Neck with Piping	Poly Cotton

**Perfect for**

- All Practices







### Baby Printed Gown

Gender	Sizes	Style	Material
Unisex	XL to S	With Steel Snap	Poly Cotton

#### Perfect for

- Pediatric Practices
- Family Practices



### Plus Design Gown

Gender	Sizes	Style	Material
Unisex	S to 2XL	Straight with Laces	Poly Cotton

#### Perfect for

- All Practices



### Plus Design Gown

Gender	Sizes	Style	Material
Female	S to 2XL	With Plastic Button	Poly Cotton

#### Perfect for

- All Practices







**Pregnancy Gown**

Gender	Sizes	Style	Material
Female	S to 2XL	Straight with Plastic Buttons	Poly Cotton

Perfect for  
• Pregnancy



**Patient Blouse Gown**

Gender	Sizes	Style	Material
Female	S to XL	With Steel Stap Buttons and Ribbing Cuff	Poly Cotton

Perfect for  
• Surgery



**Patient Flannelette Gown**

Gender	Sizes	Color	Material
Unisex	S to XL	Light Green	100% Cotton

Perfect for  
• All Practices





Pregnancy Gown

Gender	Sizes	Style	Material
Female	M to XL	Overlap with Round Neck Piping	Poly Cotton

Perfect for

- Pregnancy



Doctor / Lab Coat

Gender	Sizes	Color	Material
Unisex	S to 2XL	White	Poly Cotton Twill

Perfect for

- Doctor's / Lab Staff





Hospital Scrub with Long Shorts

Gender	Sizes	Style	Material
Unisex	3XS to 10XL	V-Neck Binding	Poly Cotton

Color

- Navy Blue

Perfect for

- All Practices



Hospital Scrub

Gender	Sizes	Style	Material
Unisex	3XS to 10XL	V-Neck with White Stripes	Poly Cotton

Color

- Navy Blue

Perfect for

- All Practices



Hospital Scrub

Gender	Sizes	Style	Material
Unisex	XS to 4XL	With Color Twill Cord	Poly Cotton

Color

- Navy Blue

Perfect for

- All Practices



Hospital Scrub

Gender	Sizes	Style	Material
Unisex	XS to 4XL	With Plastic Buttons	Poly Cotton

Color

- Sky Blue

Perfect for

- All Practices





**Hospital Scrub**

Gender	Sizes	Style	Material
Unisex	XS to 4XL	V-Neck Style	• Poly Cotton

**Color**

- Cobalt Blue

**Perfect for**

- All Practices



**Hospital Scrub**

Gender	Sizes	Style	Material
Unisex	XS to 4XL	With White Draw Cord	• Poly Cotton • Tencel

**Color**

- Green

**Perfect for**

- All Practices



**Maternity Gown with Pant**

Gender	Sizes	Style	Material
Female	Universal	Polka Dot	Poly Cotton

**Color**

- Pink with white Dots

**Perfect for**

- All Practices



**Nurses Uniform**

Gender	Sizes	Style	Material
Unisex	XS to 4XL	Stripe Design	Poly Cotton

**Color**

- Purple & White

**Perfect for**

- All Practices





Hospital Scrub

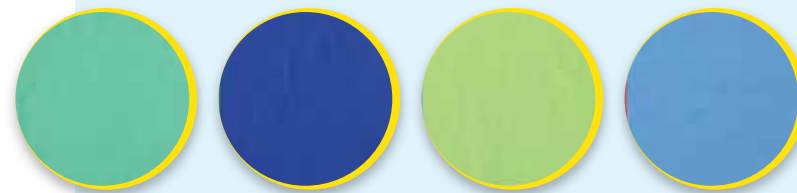
Gender	Sizes	Style	Material
Unisex	S to XL	Reversible	Poly Cotton

**Color**

- Berry, Royal Blue, Sky Blue, Green.

**Perfect for**

- Surgeons, Nurses, Physicians, Other Workers involved in Patient Care.



Hospital Scrub

Gender	Sizes	Style	Material
Unisex	S to XL	Straight with Plastic Buttons	Poly Cotton Twill

**Color**

- White

**Perfect for**

- All Practices





## *Flame Retardant* Textiles

One of our Speciality is FLAME RETARDANT techniques. We feel honor to announce that we are one of the largest company in Pakistan exporting a variety of flame retardant fabrics and made ups. Covering semi durable & non permanent flame retardant standards. Our FR Retardant fabric meets the following Standards:

- ISO 129252-1, 12952-2, 12952-3
- BS-5852, Schedule 5, Part 1, Ignition Source 0 & 1(non permanent f.r.)
- BS EN 533: 1997, BS EN 532: 1995
- BS EN 5852 after water soak Bs5651, Schedule 4 Part 1 & Schedule 5 Part 1 (Line Dry)
- BS-5852 Part II, wood crib sources 5, schedule III BS-5651, Paragraph 4.2 to 4.52 over standard foam and 30-min water soak
- BS 7176/91 & BS 7177/ BS 7175
- NF P 92-503 (1995) - "Electric Burner" - European M-1 Standard
- BS EN ISO 11612 (2008)



We Provide  
the best  
**Workforce Uniforms**





Workwear / Janitorial Uniform

Gender	Sizes	Style	Material
Male	S to 4XL	With Yellow Silver Reflective Tape	• 100% Cotton Twill • Poly Cotton Twill
<b>Color</b>			
• Green			
<b>Perfect for</b>			
• Janitorial and Municipality			



Workwear Trouser

Gender	Sizes	Style	Material
Male	S to 4XL	2 Pocket Style	• 100% Cotton Twill • Poly Cotton Twill
<b>Color</b>			
• Available in all colors			
<b>Perfect for</b>			
• Mechanics, Co-Workers			



Workwear Cargo Trouser

Gender	Sizes	Style	Material
Male	S to 4XL	6 Pockets Style	• 100% Cotton Twill • Poly Cotton Twill
<b>Color</b>			
• Available in all colors			
<b>Perfect for</b>			
• Mechanics, Co-Workers			





### FR Coverall

Gender	Sizes	Style	Material
Male	S to 4XL	Reflective Tape	100% CottonTwill
<b>Color</b>			

- Available in all colors

#### Perfect for

- Oil Refinery, Co-Workers,
- Passing FR Standards EN 11611/11612



### Non FR Coverall

Gender	Sizes	Material
Male	S to 4XL	•100% CottonTwill •Poly Cotton Twill
<b>Color</b>		

- Available in all colors

#### Perfect for

- Construction, Janitorial Services etc.



### Co-Worker Uniform

Gender	Sizes	Style	Material
Male	S to 4XL	With FR 3M Silver Reflective Tape	•100% CottonTwill/Drill •Poly Cotton Twill/Drill
<b>Color</b>			

- Available in all colors

#### Perfect for

- Lift and Craine Operator
- Construction and Engineers



## Notes



- Oeko-tex certificate.
- ISO 9001
- BSCI
- Sedex
- Flame Retardant Certificate

