

toSUN⁷²



www.to-sun.eu



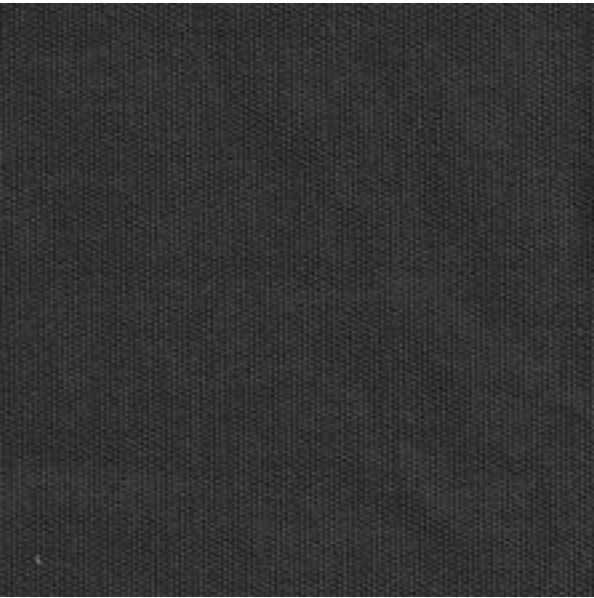
As Tosunoğlu's outdoor brand toSUN we have become a semi-integrated production facility in Turkey with a wide collection from yarn to finished fabric. The state-of-the-art factory is located in the heart of Denizli. Since 2013, we are developing and selling outdoor fabrics very successfully. Our production has risen year by year and our qualities are very well accepted by the end-users. With trendy colors, designs, and high-performance features we meet customer expectations and satisfaction at the same time. We strive to create trends and aim to be the leading company in the field.

Our qualities provide added value with our standard and extra applications such as easy cleanability, water repellency, waterproof, fire retardancy, and liquid barriers.



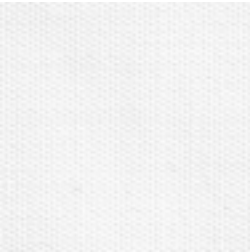
Capturing the innovations of the modern era and offering a solution to the outdoor textile needs, toSUN goes beyond the expectations of its customers with toSUN-72 and delivers its products to cargo within 72 hours in a safe and secure manner.





Product Name: CALISTA
Color: 24 COLORS
Width: 150 CM
Weight: 195 GR/M2
Composition: %100 OLEFIN

CALISTA 63



CALISTA 01



CALISTA 09



CALISTA 03



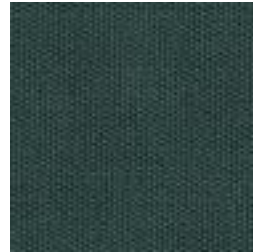
CALISTA 08



CALISTA 37



CALISTA 33



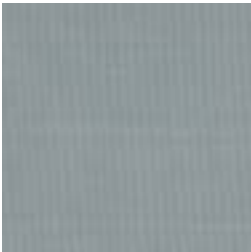
CALISTA 36



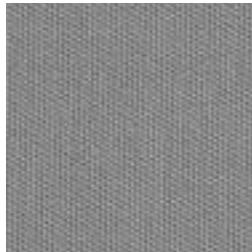
CALISTA 43



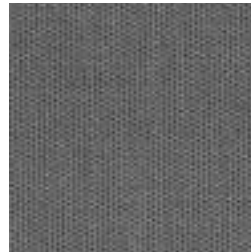
CALISTA 07



CALISTA 50



CALISTA 51



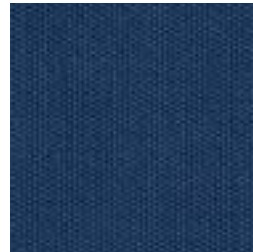
CALISTA 53



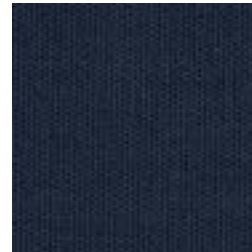
CALISTA 41



CALISTA 39



CALISTA 47



CALISTA 48



CALISTA 55



CALISTA 13



CALISTA 56



CALISTA 31



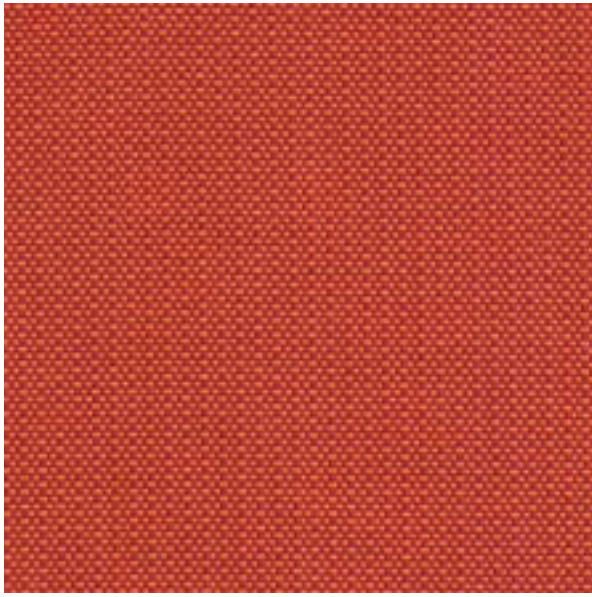
CALISTA 123



CALISTA 17

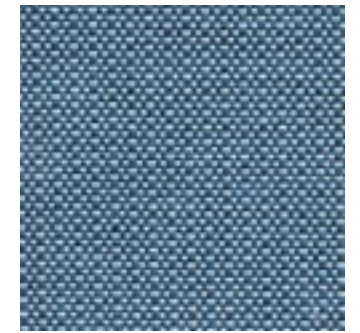
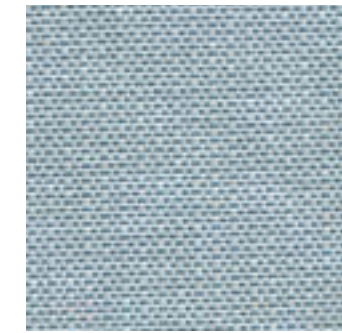
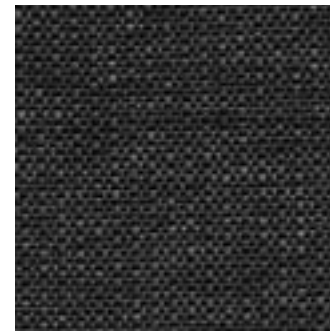
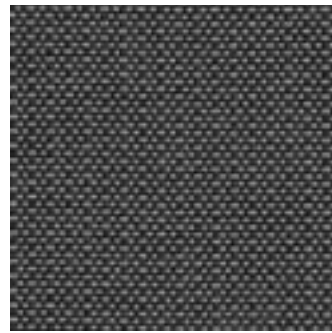
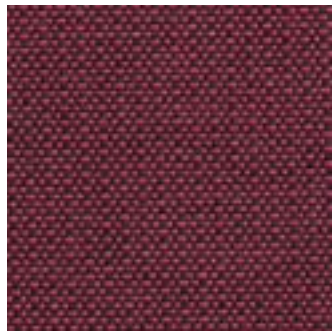
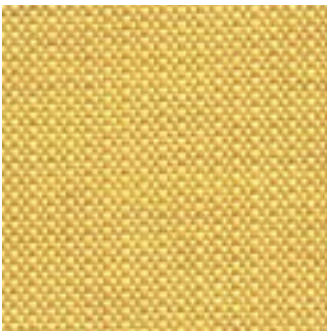


CALISTA 19



Product Name: EMBO
Color: 19 COLORS
Width: 140 CM
Weight: 352 GR/M2
Composition: %100 OLEFIN

EMBO 08



EMBO 14

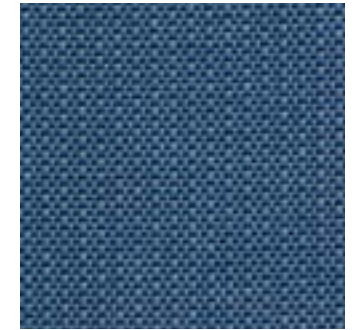
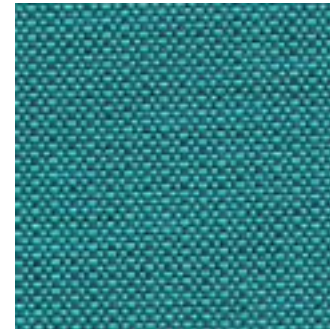
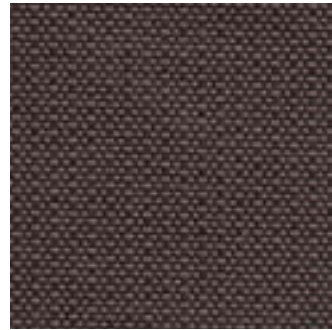
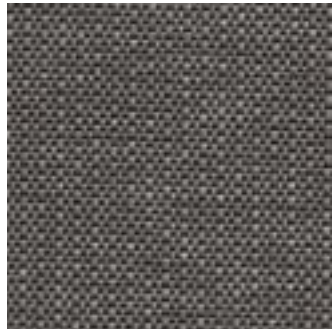
EMBO 09

EMBO 29

EMBO 32

EMBO 25

EMBO 24



EMBO 01

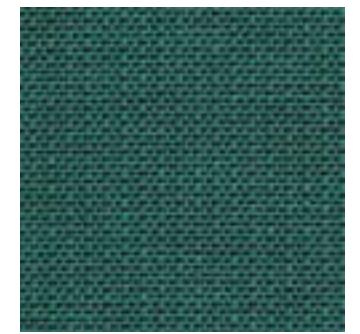
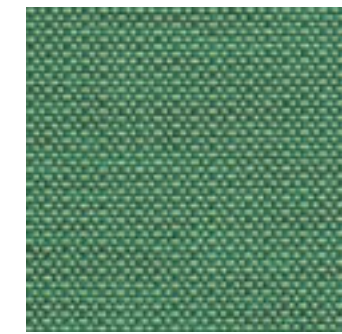
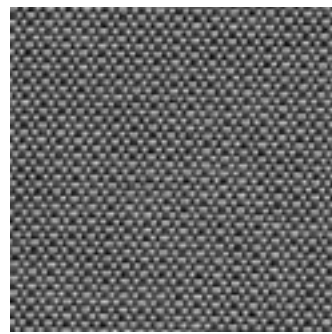
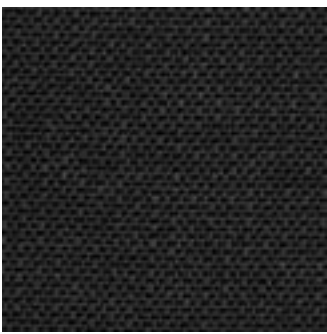
EMBO 04

EMBO 05

EMBO 20

EMBO 21

EMBO 23



EMBO 31

EMBO 26

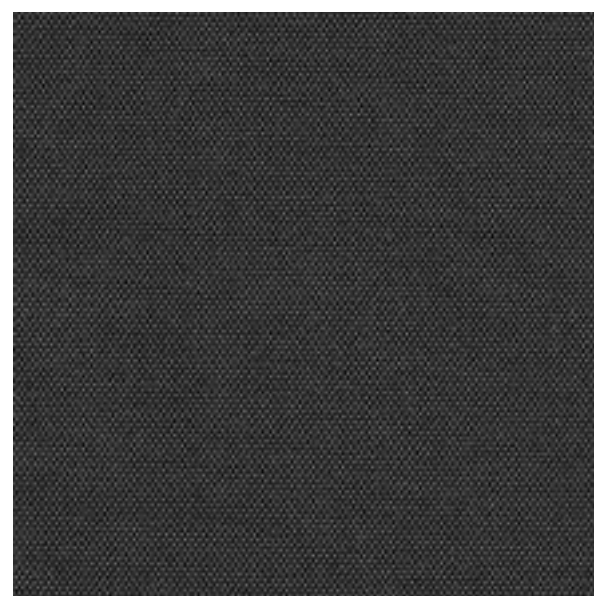
EMBO 28

EMBO 22

EMBO 17

EMBO 19





Product Name: JAMAICA
Color: 24 COLORS
Width: 150 CM
Weight: 230 GR/M2
Composition: %100 OLEFIN

JAMAICA 47



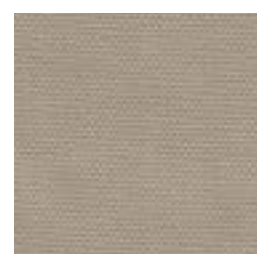
JAMAICA 01



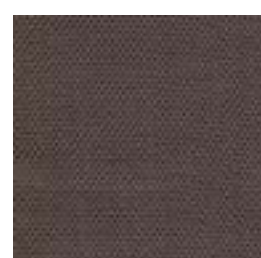
JAMAICA 02



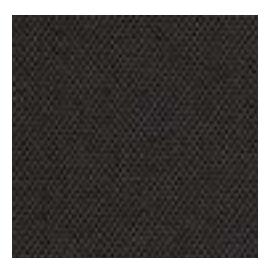
JAMAICA 04



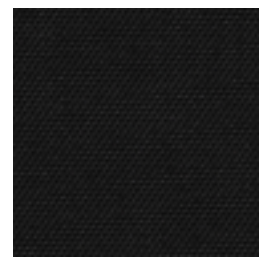
JAMAICA 06



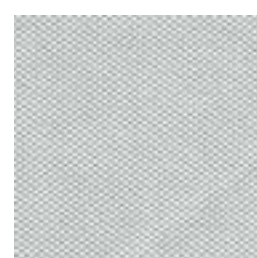
JAMAICA 09



JAMAICA 11



JAMAICA 48



JAMAICA 42



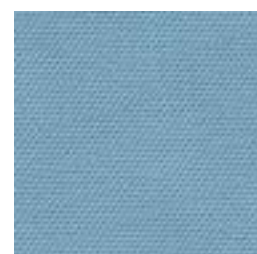
JAMAICA 43



JAMAICA 44



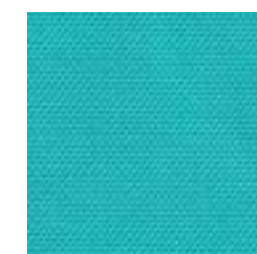
JAMAICA 45



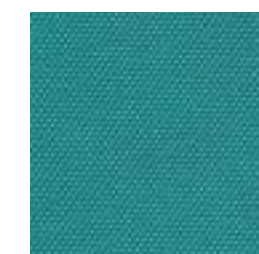
JAMAICA 34



JAMAICA 35



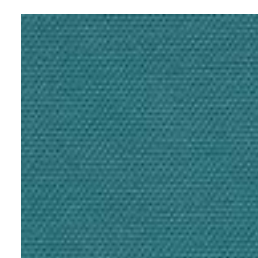
JAMAICA 29



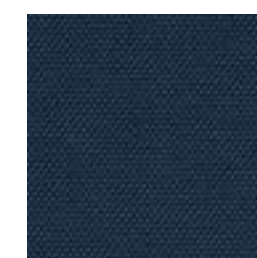
JAMAICA 26



JAMAICA 31



JAMAICA 32



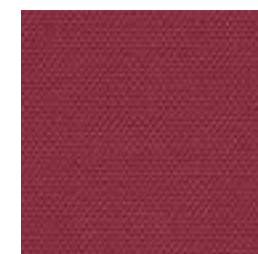
JAMAICA 39



JAMAICA 24



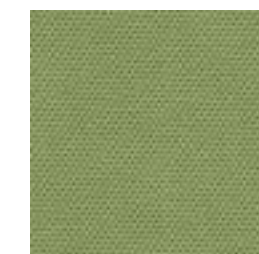
JAMAICA 19



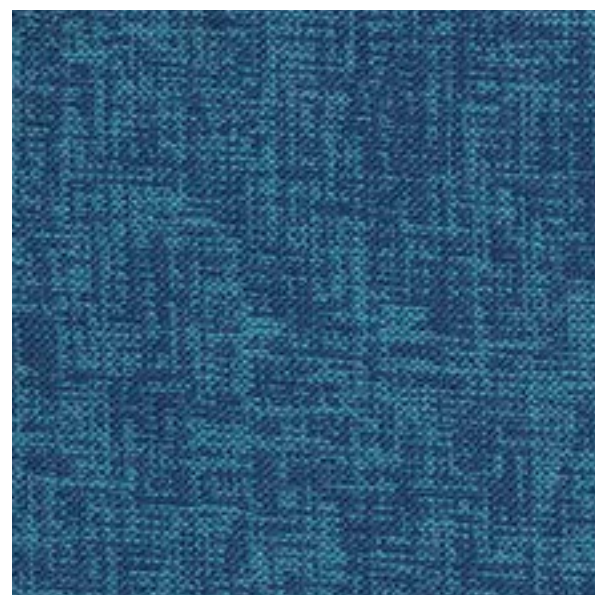
JAMAICA 20



JAMAICA 14



JAMAICA 16



Product Name: NOVAMBER
Color: 10 COLORS
Width: 140 CM
Weight: 283 GR/M2
Composition: %100 OLEFIN

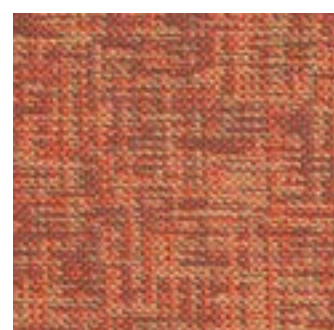
NOVAMBER 09



NOVAMBER 01



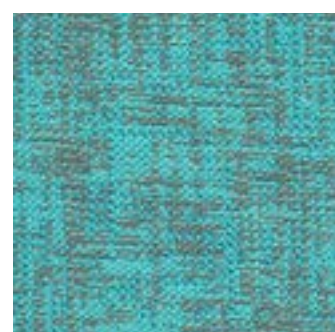
NOVAMBER 05



NOVAMBER 10



NOVAMBER 02



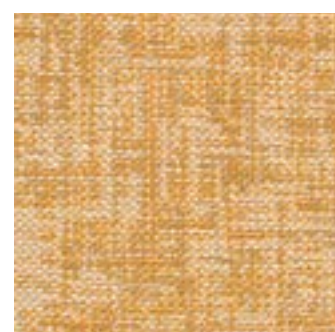
NOVAMBER 08



NOVAMBER 12



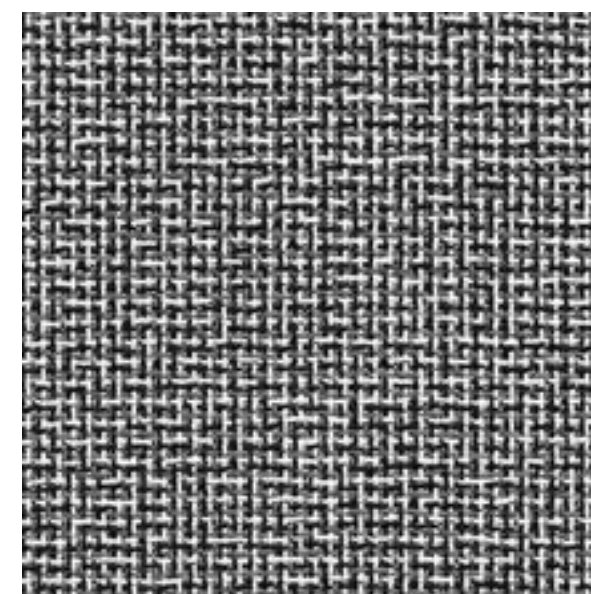
NOVAMBER 101



NOVAMBER 04



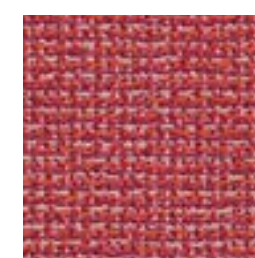
NOVAMBER 17



AGVA 23



AGVA 01



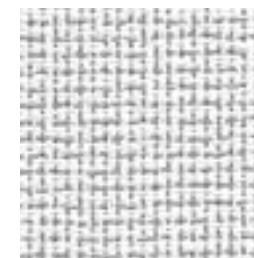
AGVA 09



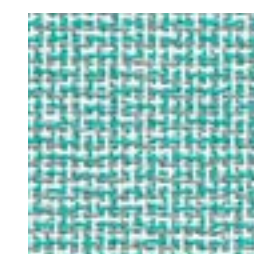
AGVA 20



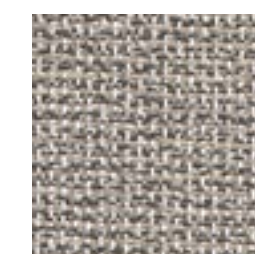
AGVA 02



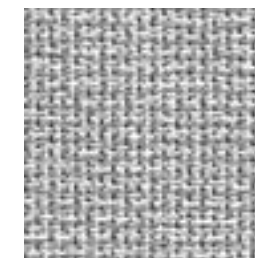
AGVA 21



AGVA 15



AGVA 03



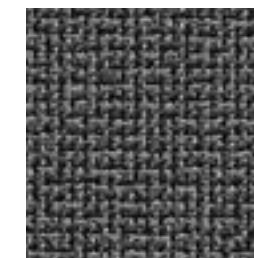
AGVA 22



AGVA 17



AGVA 05

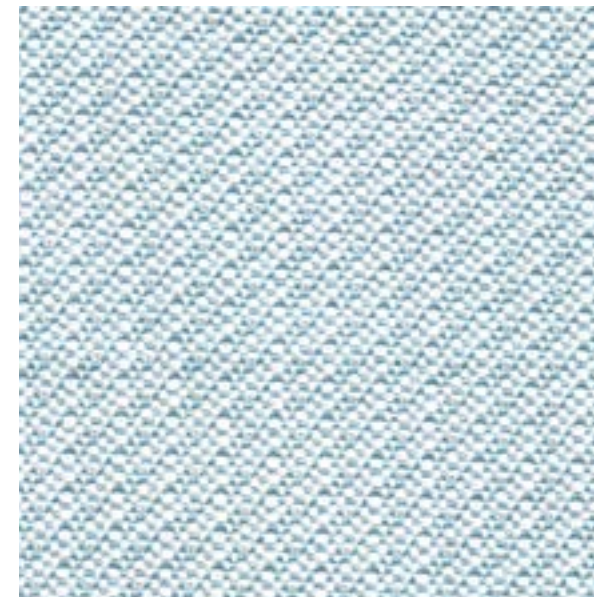


AGVA 25

Product Name: AGVA
Color: 12 COLORS
Width: 140 CM
Weight: 304 GR/M2
Composition: %100 OLEFIN



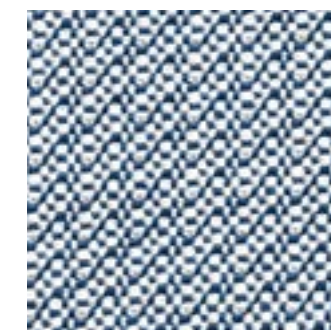
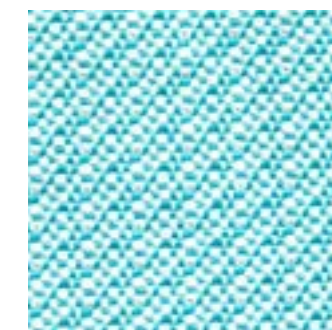
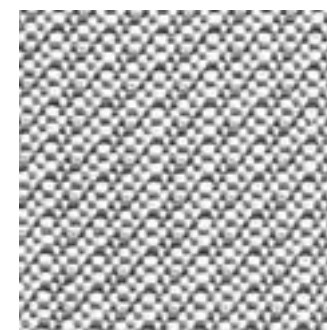
Product Name: BIAS KOM
Color: 10 COLORS
Width: 140 CM
Weight: 459 GR/M2
Composition: %100 OLEFIN



Product Name: AYALA KOM
Color: 10 COLORS
Width: 140 CM
Weight: 459 GR/M2
Composition: %100 OLEFIN

BIAS KOM 04

AYALA KOM 04



BIAS KOM 02

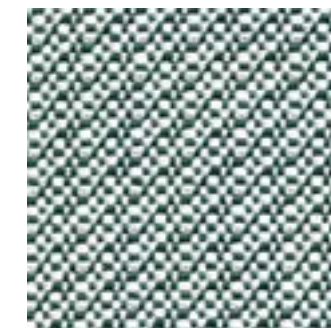
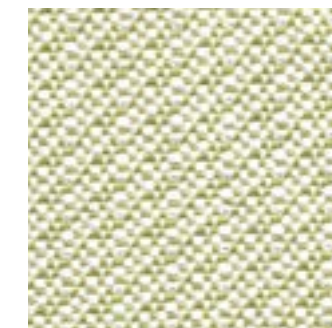
BIAS KOM 03

BIAS KOM 19

AYALA KOM 03

AYALA KOM 08

AYALA KOM 18



BIAS KOM 07

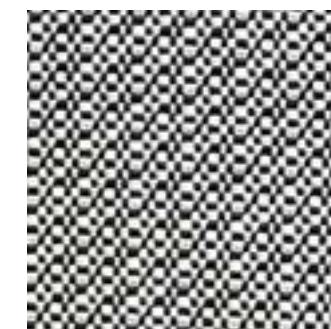
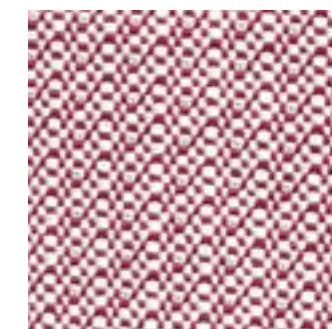
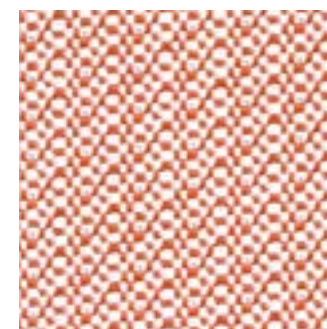
BIAS KOM 13

BIAS KOM 08

AYALA KOM 02

AYALA KOM 07

AYALA KOM 13



BIAS KOM 18

BIAS KOM 14

BIAS KOM 16

AYALA KOM 14

AYALA KOM 16

AYALA KOM 19

Product Name: MASSI / **Color:** 8 COLORS

Width: 150 CM / **Weight:** 200 GR/M2 / **Composition:** %100 OLEFIN



MASSI / BEIGE



MASSI / DEEP GREEN



MASSI / BROWN



MASSI / ORANGE



MASSI / BLACK



MASSI / TURQUOISE



MASSI / LIGHT GREEN



MASSI / NAVY

Product Name: RIO / **Color:** 6 COLORS
Width: 150 CM / **Weight:** 200 GR/M2 / **Composition:** %100 OLEFIN



RIO / SUNFLOWER



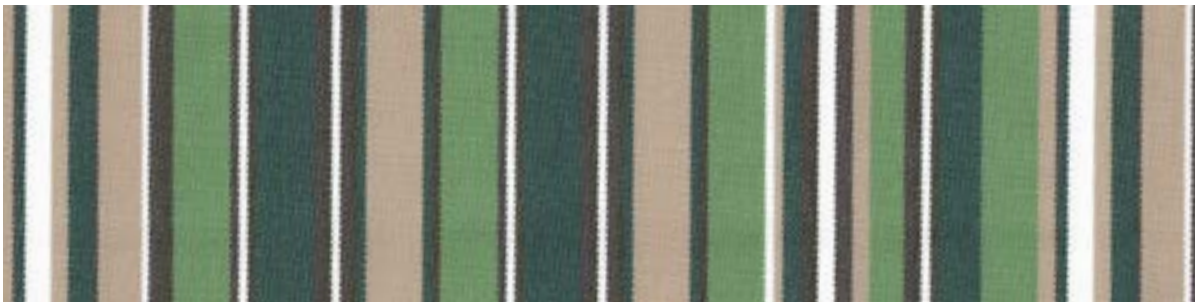
RIO / TANGERINA



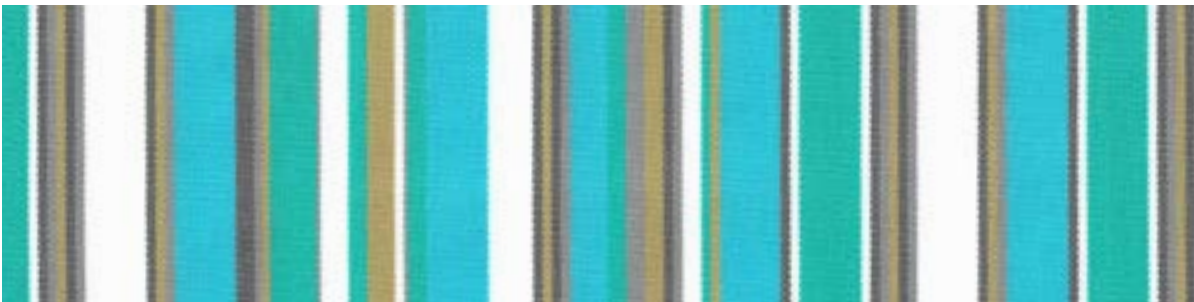
RIO / SILVER



RIO / MARINE



RIO / FOREST



RIO / AQUA

Product Name: GALA CAGE / **Color:** 8 COLORS
Width: 140 CM / **Weight:** 439 GR/M2 / **Composition:** %100 OLEFIN



GALA CAGE / SAND



GALA CAGE / PEWTER



GALA CAGE / OCEAN



GALA CAGE / NAVY



GALA CAGE / MELON



GALA CAGE / FOREST



GALA CAGE / PORT



GALA CAGE / JET



Product Name: GALA CORNER / **Color:** 8 COLORS
Width: 140 CM / **Weight:** 439 GR/M2 / **Composition:** %100 OLEFIN



GALA CORNER / SAND



GALA CORNER / MELON



GALA CORNER / PEWTER



GALA CORNER / FOREST



GALA CORNER / OCEAN



GALA CORNER / PORT



GALA CORNER / NAVY



GALA CORNER / JET





EASY CLEAN

CAREFREE is our brand for easy-cleanability properties which can be applied to the fabrics and is known also as Soil & Stain repellency.



WATER REPELLENCY

All toSUN fabrics come with water repellency, which is a necessity for outdoor use.



ANTIBACTERIAL

All toSUN fabrics are antibacterial in their nature.



CIGARETT SMOLDERING FR TEST

All toSUN fabrics meet the EN 1021 - 1, BS 5852 source 0, CAL 117, IMO A 652 (16) cigarette smoldering FR test requirement.



LIQUID BARRIER

All toSUN Fabrics can be laminated with a PU membrane to have a liquid barrier. The liquid barrier prevents any liquid from leaking and penetrating through the fabric.



CONFIDENCE IN TEXTILES

Our production and finishing processes are in accordance with OEKOTEX standards.



GREEN ENERGY

We contribute with our self-sufficient solar energy used for the entire production, and feel responsible for the environment.



RECYCLED

Our aim is to increase our recycled product range to its maximum within the very near future, to avoid carbon emissions as much as possible.



IT WILL BE DELIVERED TO THE CARGO WITHIN 72 HOURS

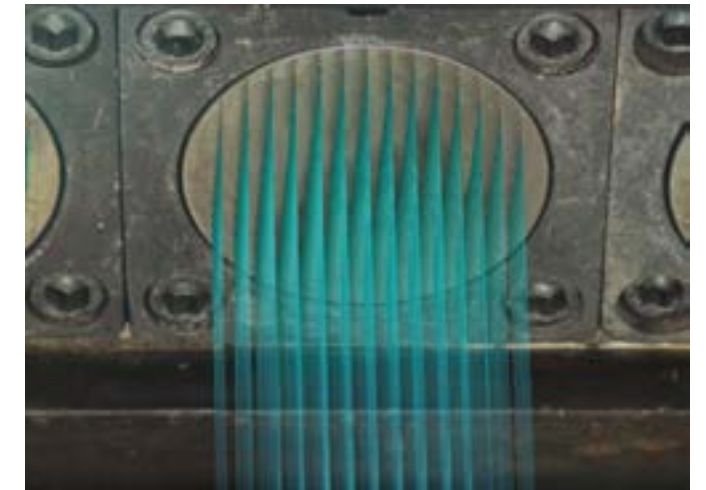
toSUN goes beyond the expectations of customers and completes its outdoor textile needs by shipping safely and securely within 72 hours.



3 YEARS WARRANTY

This warranty is valid only if CARE & MAINTENANCE INSTRUCTIONS conditions are followed: INTEGRO shall replace free of charge the section of fabric recognized as faulty, excluding any costs or any other compensation for any reason what so ever.

About Olefin



HOW OLEFIN IS MADE

Olefin is a manmade fiber that is typically used along with other fibers to create outdoor fabric blends. It is often used in outdoor furniture and for a variety of other applications, including house wrap, marine coverings, and clothing. Depending on its chemical structure, olefin may also be referred to as polyethylene or polypropylene. It is manufactured in a similar manner as polyester and nylon. The chemicals used are melted and fed through a shower-head-like device called a spinneret head to form long fibers. Olefin typically has a smooth texture and is usually solution-dyed. It is a durable fabric that dries quickly and is resistant to weathering, chemicals, stains, and mildew. To- SUN is a solution-dyed olefin fabric, which means it goes through the same process as Sunbrella to make its color. Olefin is also a mildew-resistant, quick-drying, and water-repellant fabric. Another benefit is that it is resistant to chlorine. Though olefin is a lesser-known fabric than acrylic, its best feature is that it is MORE DURABLE and wears less over time!

USES FOR OLEFIN FABRICS

Olefin fabrics are versatile for a variety of applications. They are used in automotive interiors; home furnishings such as patio cushions, upholstery, and wall coverings; and industrial uses like disposable non-woven fabrics, filter fabrics, bags, and geotextiles.

Olefin is very heat sensitive and the fabric can break down and melt at extremely high temperatures. This isn't a problem for day-to-day use but does mean it requires a little extra care when cleaning. After washing olefin fabrics they should be line dried or tumble-dried with gentle or no heat. Also, in general, avoid ironing olefin. If you must iron, use the lowest temperature setting available. Olefin is a basic fabric that also is sensitive to sunlight. However, most olefin fabrics that are manufactured for outdoor purposes have stabilizers added to counteract this problem.

Our Outdoor fabrics have been produced with



yarns

OVER ALL CHARACTERISTICS			
	STANDART		
ABRASSION	BS EN ISO 12947-2	20.000	
PILLING	BS EN ISO 12945-2	5	
SEAM SLIPPAGE	EN ISO 13936-2	Warp: 4 mm	Weft: 4 mm
COMPOSITION		%100 OLEFIN	
FINISH		WATER REPELLENT FINISH	
OIL REPELLENCY	ISO EN 14419	3	
SPRAY TEST	BS EN ISO 4920	4/5	
FLAMMIBILITY	NFPA 260	PASS	
	CAL 177	PASS	
	BS 5852 SOURCE 0	PASS	
	EN ISO 1021 PART- 1	PASS	
ANTI BACTERIAL	JIS L 1902	REDUCTION %99 EFECTIVE	

COLOR RESISTANCE					
FASTNESS TO	STANDART	LOD	OD	OD+	OD++
LIGHT	BS-EN ISO 105-B02	7	7	7/8	8
WEATHERING	BS-EN ISO 105-B04	6	6/7	7	7/8
UV	ASTM G-154 (1200 Hours)	4	4	4/5	5
WASHING	BS-EN ISO 105-C06 40 C	4/5	4/5	4/5	4/5
SEA WATER	BS-EN ISO 105-E02	4/5	4/5	4/5	4/5
POOL WATER	BS-EN ISO 105-E03	4/5	4/5	4/5	4/5
RUBBING	BS-EN ISO 105-X12	4/5	4/5	4/5	4/5



CARE & MAINTENANCE INSTRUCTIONS

1. Remove any residual soil by lightly brushing or scraping the stain by sponging down with water.
2. If further cleaning needed, apply a solution with soap and water. Work the solution into stain by lightly scrubbing the area with sponge or very soft bristle brush.
3. Remove cleaning solution with a clean soft towel or sponge to remove the stain and excess cleaning solution. (Repeat step 2 and 3 until stain is removed.)
4. Rinse the affected area thoroughly with clean water. Apply a spray bottle and extract the remaining moisture using towel. Repeat rising method if needed thoroughly remove cleaning solution from the fabric.

- Vacuum the fabric prior to cleaning.
- Do not be alarmed if stain is not removed after first application and removal of cleaning solution.
- If the fabric can be removed from furniture it may be cleaned in a mild soap and warm water (40° C) solution in washing machine and dried in an environment also less than 40° C.
- Do not steam press or dry in electric or gas dryers. Allow fabric to be air dried naturally.

REMARKS

- Do not leave your product after 50°C outside temperature under directly sunlight.
- All tests are forecast which made in laboratory, real effect can be different.
- Results can be vary region by region.
- The values for the products may have a variation of +/- 5%.

