

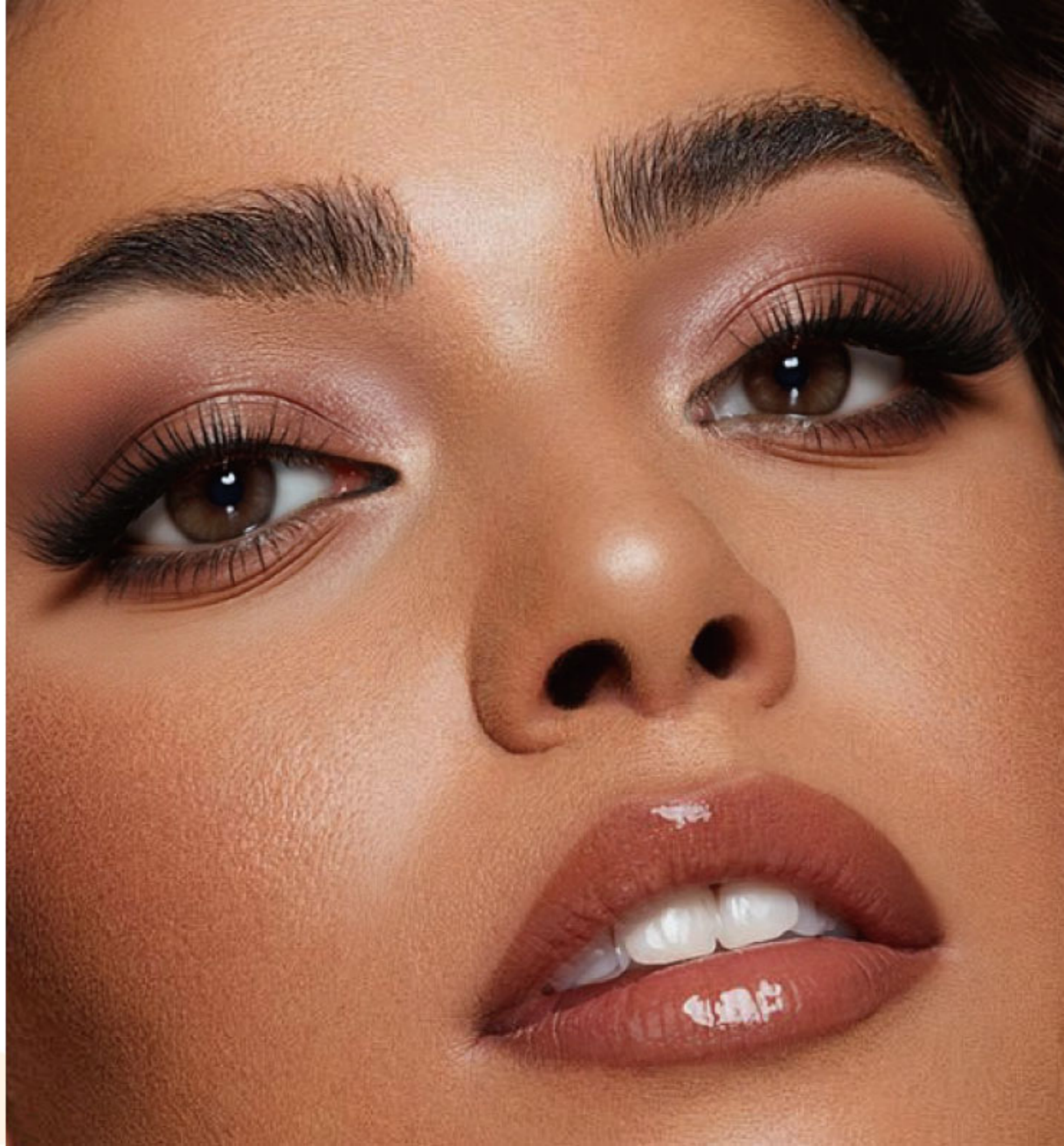
***ST FUTURE***  
INTERNATIONAL

# FALSE EYELASHES

Beauty · Personal Care · Home Aroma

**25<sup>+</sup> YEARS**

One Stop  
Beauty Accessory Supply



# About us

Founded in year 2000, St Future has been renowned to be a professional one stop beauty manufacturer and supplier. We specialise in managing OEM and ODM projects for makeup tools, nail, lash, body & hair, and home aroma products.

## Global Manufacture Bases

China, Vietnam, Cambodia and USA.

We cater to clients in more than 80 countries worldwide. Our commitment to providing high-quality products and professional service has made us a trusted name in the beauty industry.

Founded in  
**2000**

**25**  
Years Manufacturer  
and Supplier

Happy  
Customers in  
**80+**  
Countries

7 Factories in  
**4**  
countries

## Company Culture



### VISION

Become a century-old  
enterprise



### MISSION

Continue to create value  
for global customer



### VALUES

- Customer First
- Behave With Integrity
- Take The Lead
- Be The Best
- Embrace Changes
- Enjoy Life



### ATTITUDE

Work life balance

# Composition: Hair+Band

## Hair Materials

### 1.Mink hair

Mink eyelashes are treated with animal fur (mink hair mainly). The texture is close to human hair, soft and insensitive, and the luster is good.

### 2.Synthetic fiber hair.

Synthetic fiber hair mainly includes PET, PBT, etc., which is one of the types of resin. It belongs to a kind of Crystalline Polyester fiber. Because of its nature, it is also known as shape memory fiber, which can keep its shape unchanged for a long time. It has the following characteristics that are especially suitable for making eyelashes:

- ① Shape memory: the warping degree remains unchanged
- ② Dimensional stability: the production process is highly accurate
- ③ Chemical resistance: not affected by chemicals such as alcohol, cleaning liquid.
- ④ Heat resistance: will not be deformed after encountering the glue
- ⑤ Prevent static electricity: tweezers and eyelashes are not easy to stick together

## Band

Generally divided into transparent band and black band.



Transparent band



Black band

# Hair Characteristics

## Mink Hair

Softness, reality, with 3D effect, a bit messy



Mink hair-Sparse Style



Mink hair-Dense Style



Mink hair-Cross Style

## Synthetic Fiber Hair

Shape memory / Dimensional stability /  
Chemical resistance / Heat resistance



Synthetic fiber hair-Sparse Style



Synthetic fiber hair-Dense Style



Synthetic fiber hair-Cross Style

# Production Process



Step1: Pressing



Step2: Combining



Step3: Cutting



Step4: Shaping



Step5: Fixing

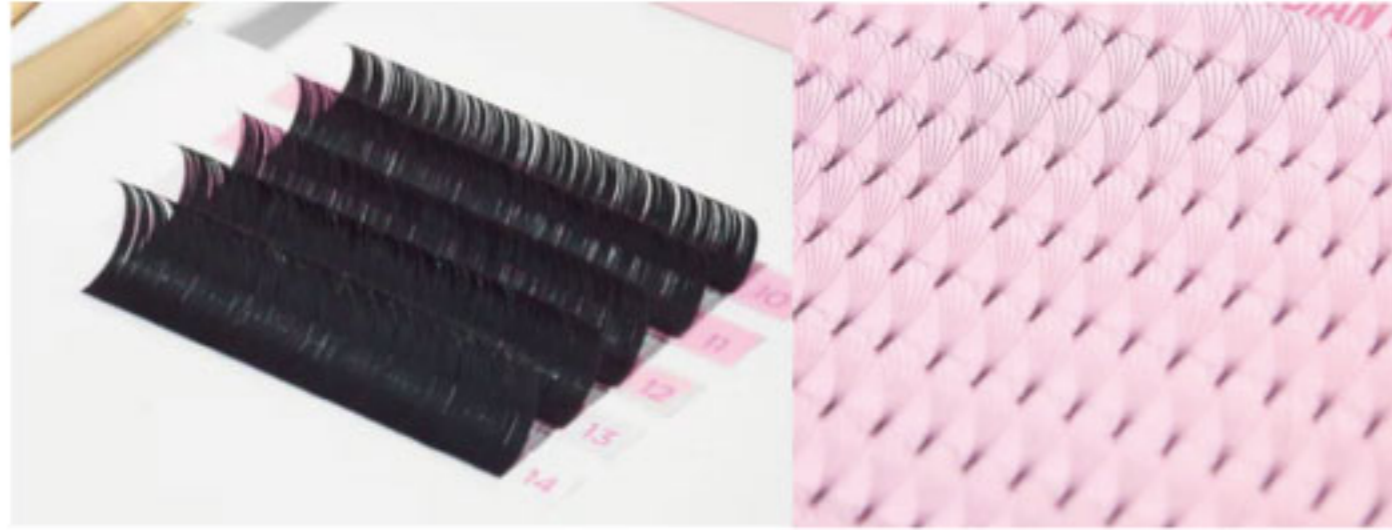


Step6: Quality inspection

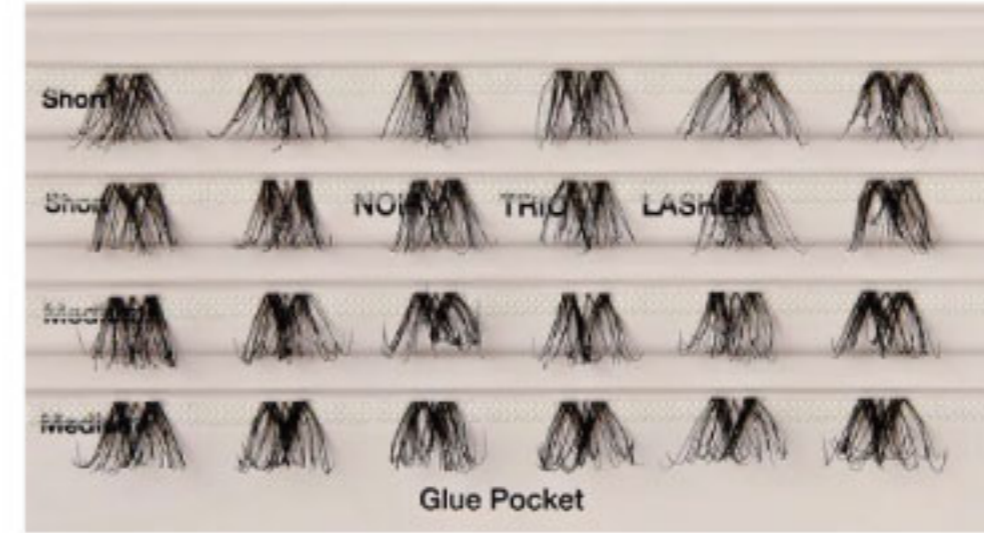


Step7: Packaging

# Types Of Eyelashes



Eyelash Extension



Cluster Lashes



Half Lashes



3/4 Lashes



Strip Eyelashes



Bottom/Lower Lashes

# Find The Perfect Lash Extensions

## Lash Extensions by Eye Shape

**Natural Eye:** This shape enhances natural lashes without drastically changing their appearance and is a great option for someone who wants a minimal makeup look.

**Cat Eye:** Longer, thicker lashes are applied to the outer quarter of the eye and tapered towards the inner corner. The look can be customized from subtle to dramatic and works best on almond-shaped eyes, round eyes, close-set eyes, and downturned eyes.

**Doll Eye:** Otherwise known as an open eye style, this shape gives off a wide-eyed look with lashes that are longer and more dramatic at the center of the lash line and lashes that taper toward the outer and inner corners. They work best on round and almond shapes and downturned eyes.

**Squirrel Eye:** With this look, lashes are shorter on the inner corner, longer towards the arch of the brow, and slightly tapered on the outer corner. Create both the open doll and sexy cat effect. They're great for close-set eyes, high-brow arches, or for lashes that grow downwards."



# Find The Perfect Lash Extensions

## Styles of Lashes

**Classic Lashes:** classic lashes are subtle and perfect for everyday wear. "Of all the lashes, they're the most natural looking and a safe."

**Volume Lashes:** result being a dark and feathery look

**Hybrid Lashes:** The hybrid technique combines classic and volume applications, resulting in a textured, wispy, lash line that still appears natural.

**Russian Volume Lashes:** These extensions mimic the appearance of a bold, winged eyeliner, providing fullness and density across the entire lash line.

**Wispy Lashes:** Otherwise known as a staggered, textured, or strip lash, wispy lashes that can be either light and airy or dense and intense.



# Find The Perfect Lash Extensions

## Curl Options

There are different types of curl patterns and lengths to choose from and they're often identified by letters.

Which option is best for you based on your eyes and lifestyle

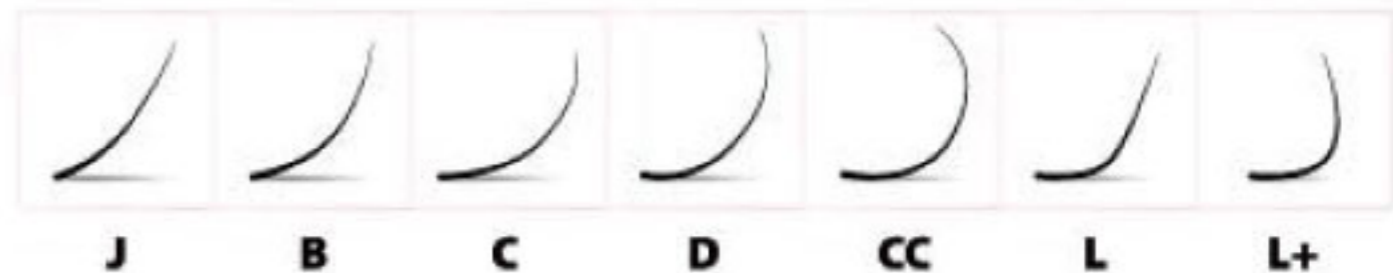
**J Curl:** The slight curl at the end of this extension resembles the letter J and is perfect for those seeking volume and lift without a lot of drama.

**B Curl:** With a straight base and a curled tip, this extension provides a little more lift than a J curl.

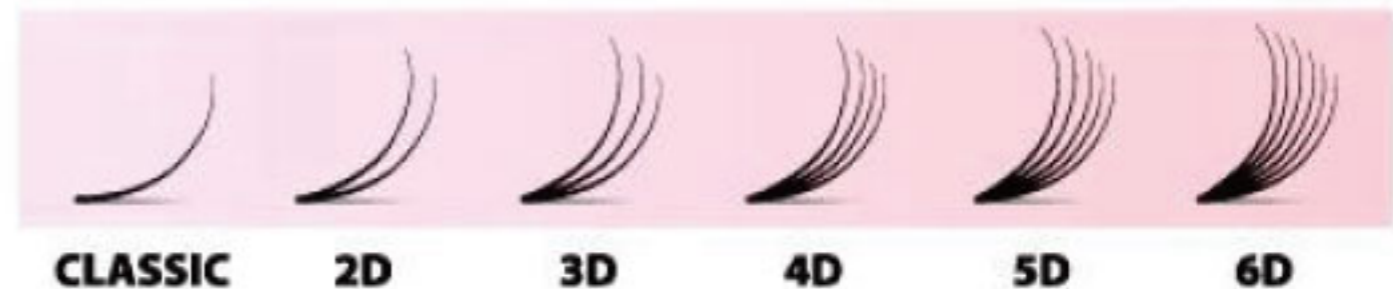
**C Curl:** Considered the most popular, a C curl mimics the shape of a naturally curled lash.

**D Curl:** The curliest of all lash extensions, the D curl provides dramatic volume and lift.

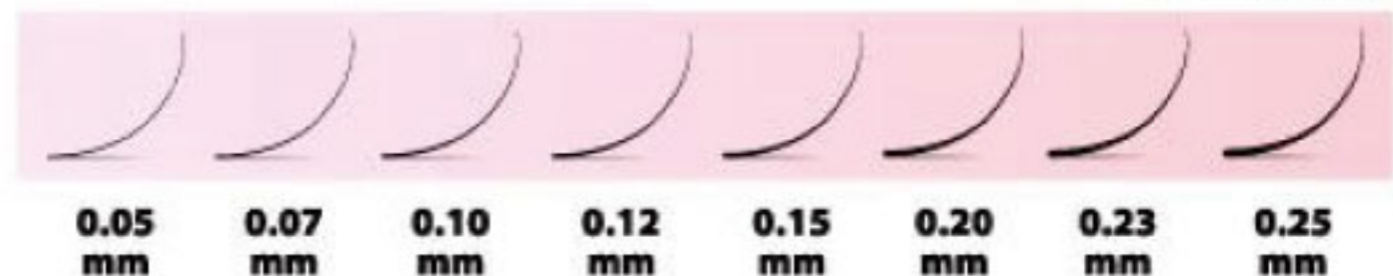
**L Curl:** Often called the "Barbie" curl for its dramatic look, the L curl has a flat base followed by an extreme lift resembling the letter "L".



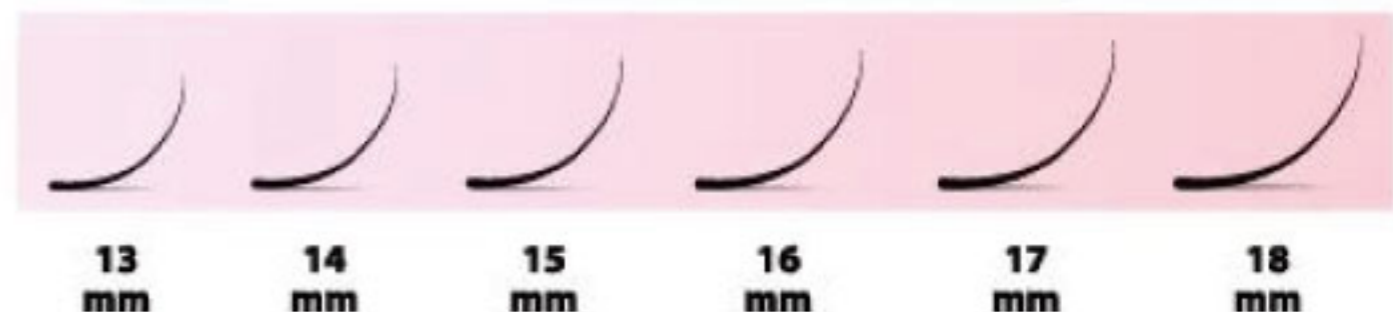
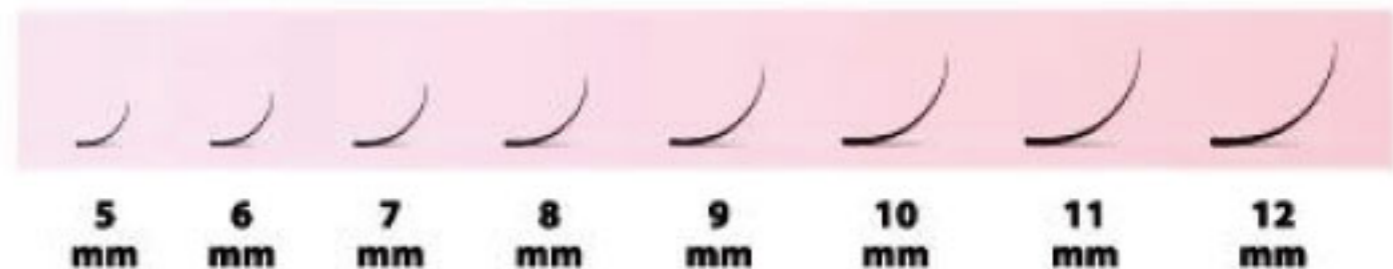
VOLUME



THICKNESS



LENGTH

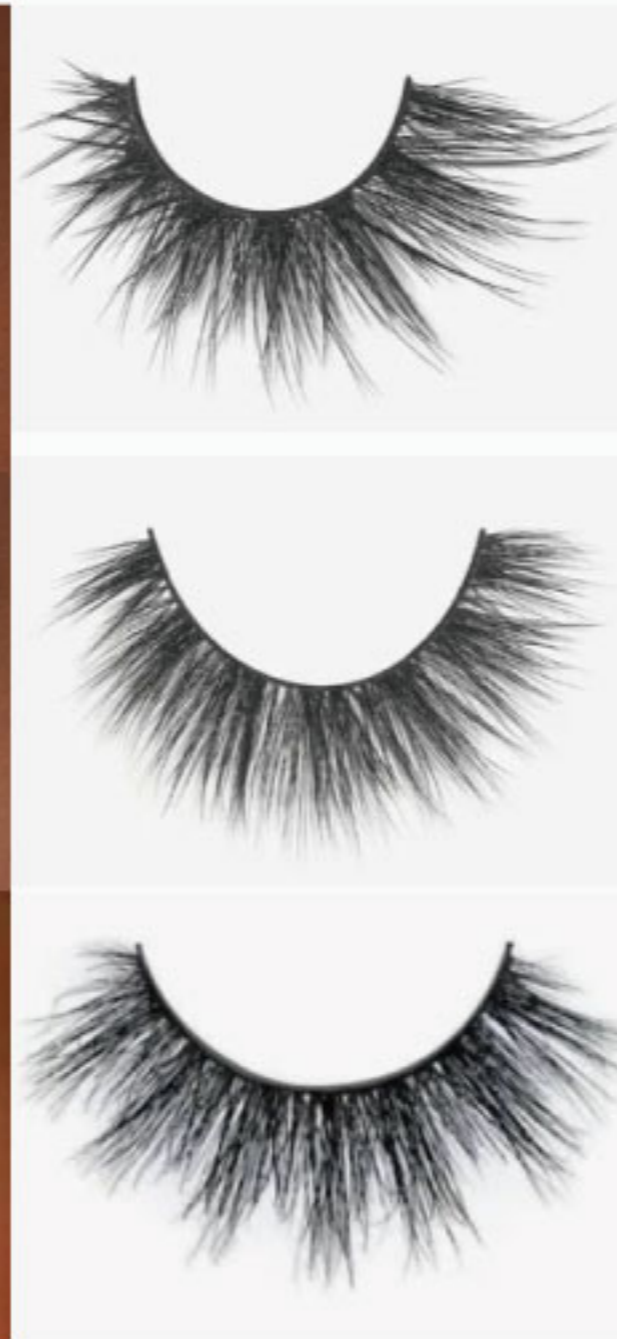


# Style Of Eyelashes

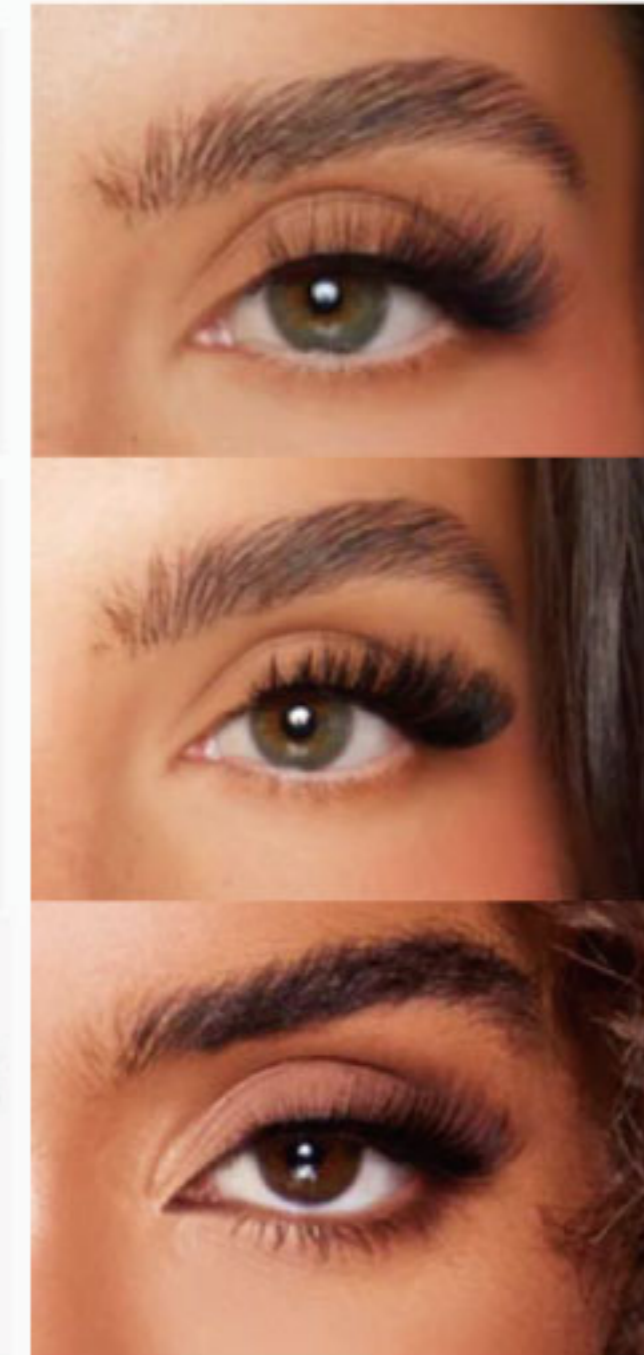
## 01 Natural / Naked Lashes



## 02 Glam / Dramatic / Luxury / Big Beautiful Lashes



## 03 Butterfl'eyes / Cat Eye Lashes



# Airy

## Lash




Perfect for  
everyone  
Beginner to Pro

patent Pending



# What's The Difference?

NO GLUE NEEDED

	<div>Airy</div> 	<div>Poppy</div> 	<div>Normal Cluster</div> 
Thickness	x1	x2	x3
Weight	x1	x3	x3
User feeling	♥♥♥♥♥	♥♥♥♥	♥♥♥♥
Glue	Pre-glued	Pre-glued	Glue need
Target audience	Beginners to Pro	Beginners to Pro	Pro
Way of looking	Natural	Natural or fluffy	Natural or fluffy

1 Cluster design fit for  
all eye shape

2 Pre glued for easy  
application

3 Thinner & lighter

4 No lash lash

5 Great for  
natural looking

## Enhanced Comfort and Fit:

The unique design allows the lashes to conform perfectly to your eye shape, providing superior comfort and a natural look.



Own rubber strip



 **NO GLUE  
NEEDED**

## Exquisite Craftsmanship:

Precision engineering results in meticulously crafted lashes that offer a refined and elegant appearance.

Slim and comfortable,  
Lighter weight than  
normal eyelashes



It fits the  
eyes better

Naturally  
non-reflective

SKU:020233001973  
Material: Chemical fiber  
Size:10-12cm

## Innovative Molded Construction:

Utilizing cutting-edge technology, our lashes are crafted through a seamless molding process, eliminating traditional assembly techniques.



### Single-Layer Design:

This advanced method creates a single layer of lashes, ensuring a more natural and lightweight feel.





## Experience Unmatched Elegance:

The Next Generation of Lashes

Small laminate  
flat hairs



Flat hair does not  
strain the eye



Convenient and  
easy to operate

Last 12H

Suitable for  
more beginners



The design of the  
arc has no sense of  
foreign objects.

0.002g/PCS

Light and not  
collapsing



Comfortable and  
Not pricking one's eyes



Option 1



Option 2



Option 3

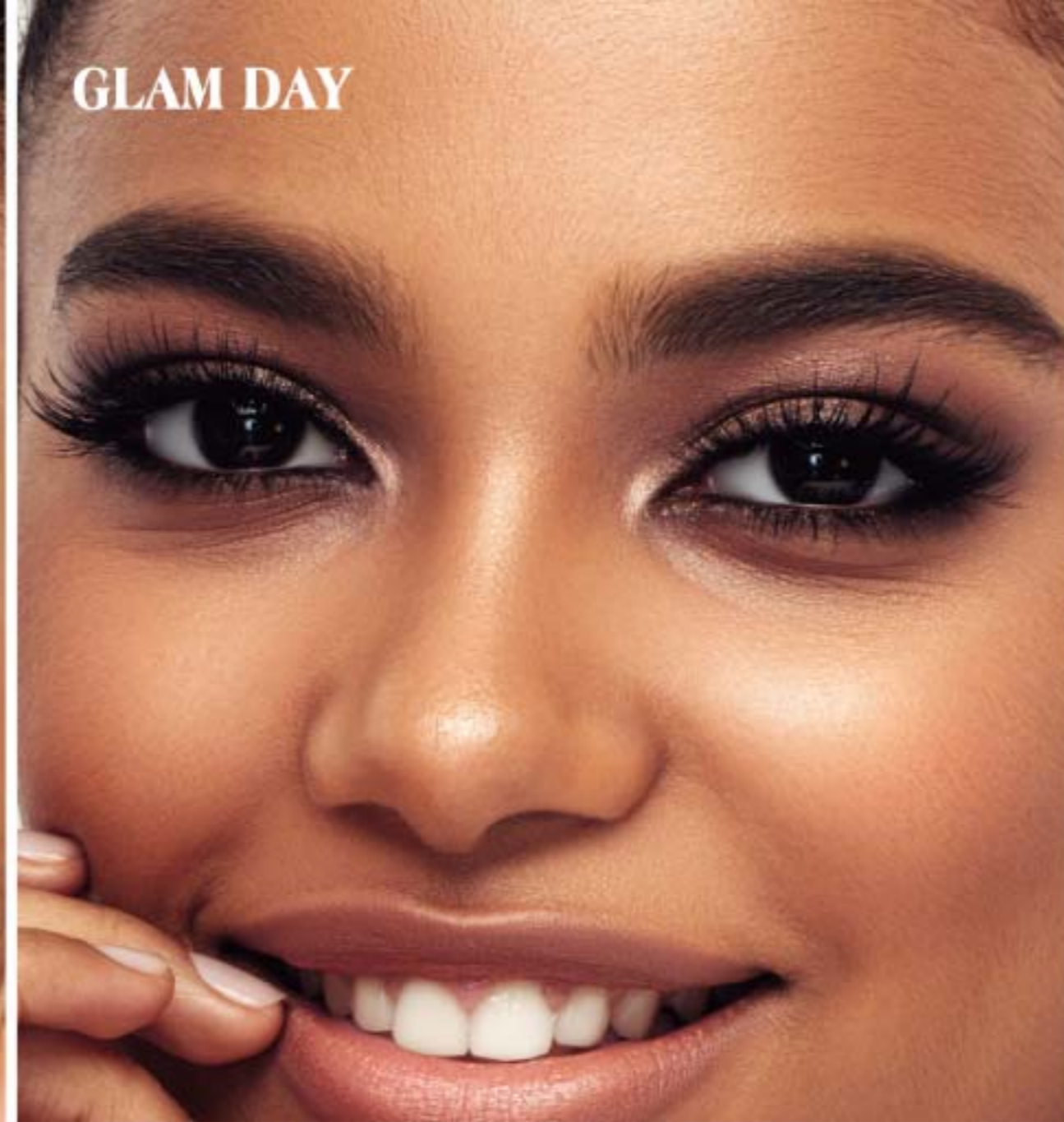


Option 4



Option 5

Can be  
customized



# Poppy Lash

Just one step press on & go

# PRE GLUED

## SELF ADHESIVE LASHES CLUSTER

- Cluster design fit for all eye shape
- Pre glued for easy application
- No lash lash
- Natural or fluffy looking



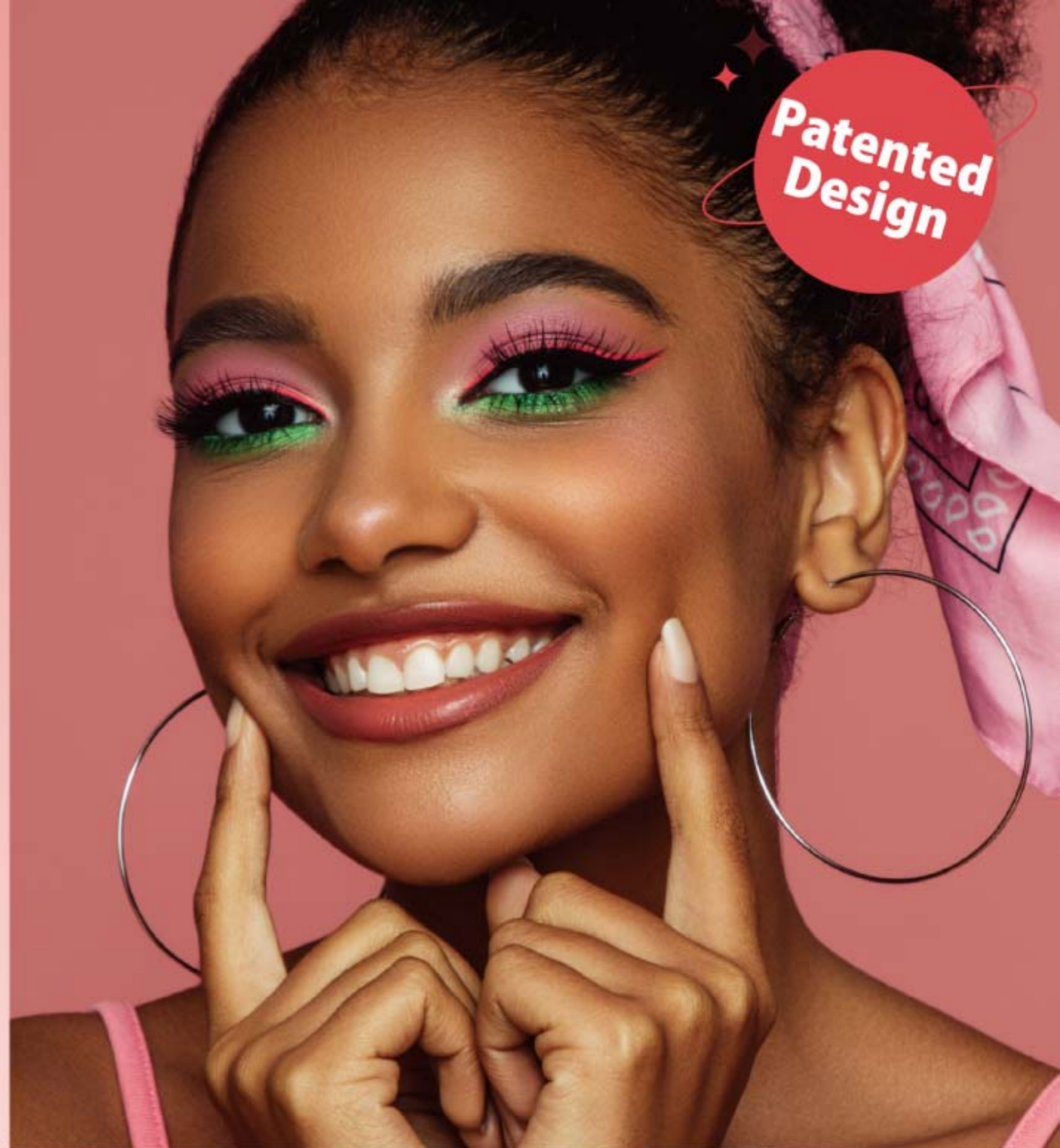
Perfect for everyone  
**Beginner to Pro**

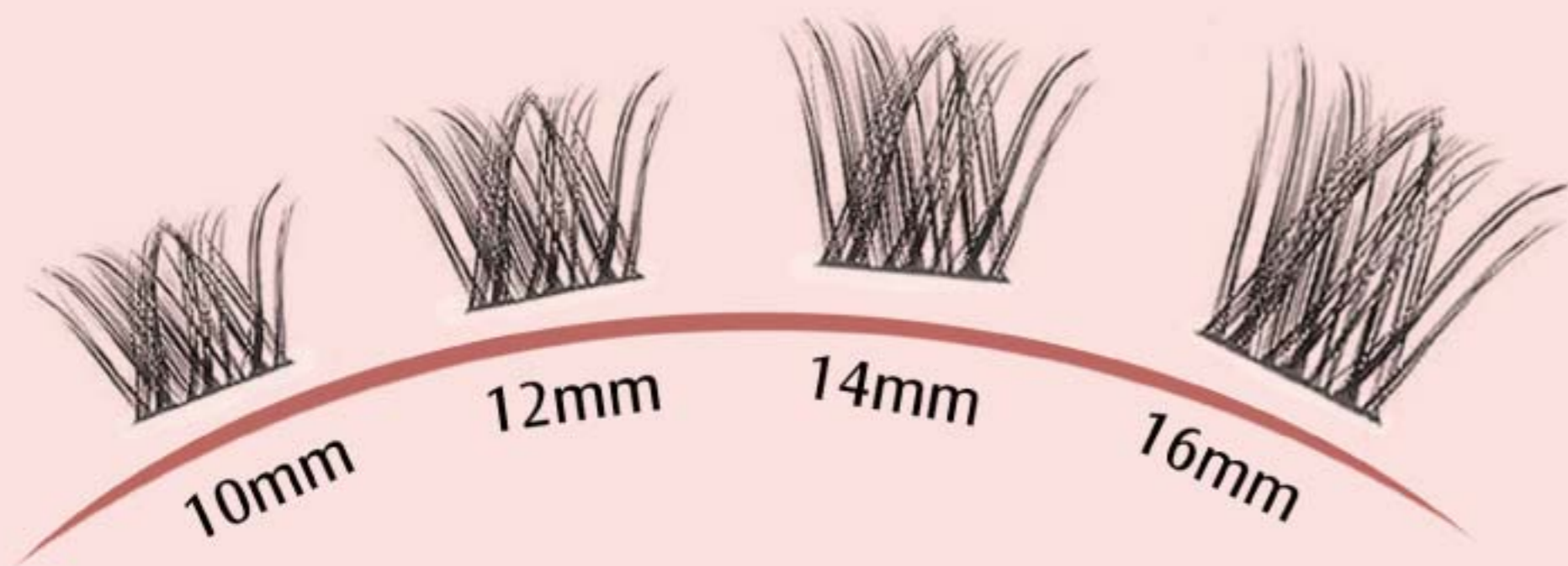
SKU.NO: 020233001485

Material: Fiber



**Patented  
Design**





Flexible glue



Strong viscosity



Reusable



**No Lash Cluster  
Remover Needed**



NEW  
COLLECTION

# Slant Fox

Glam cluster eyelashes



### **Bold Manga Vibes:**

Create expressive, anime-inspired eyes effortlessly.



### **Everyday Natural Glam:**

Ideal for subtle, daily wear with a lifelike finish



### **Red-Hot Best-Seller:**

A favorite among beauty lovers worldwide!





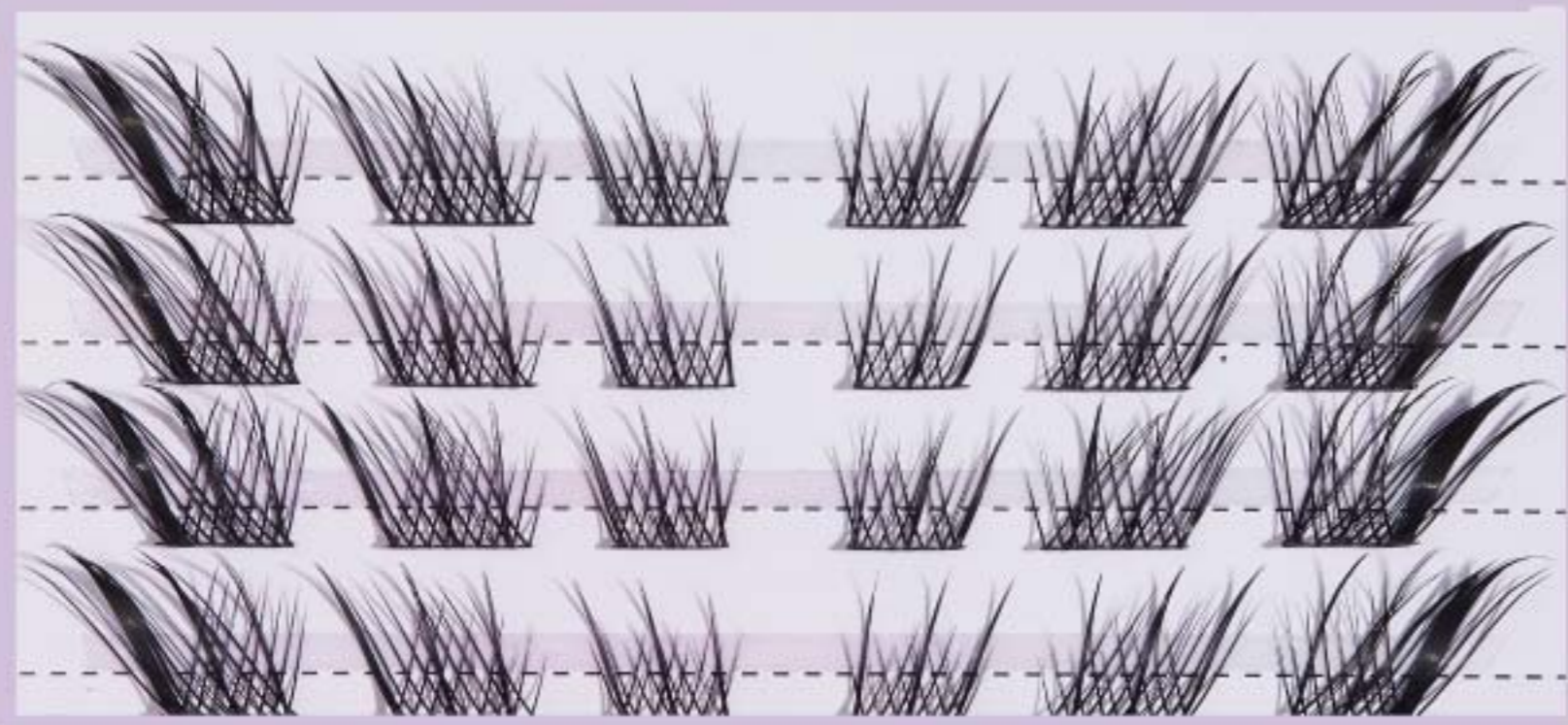
**Extremely  
Thin Stalk**



**Stable Curls**

**L** For Left Eyes

**R** For Right Eyes



**Before**

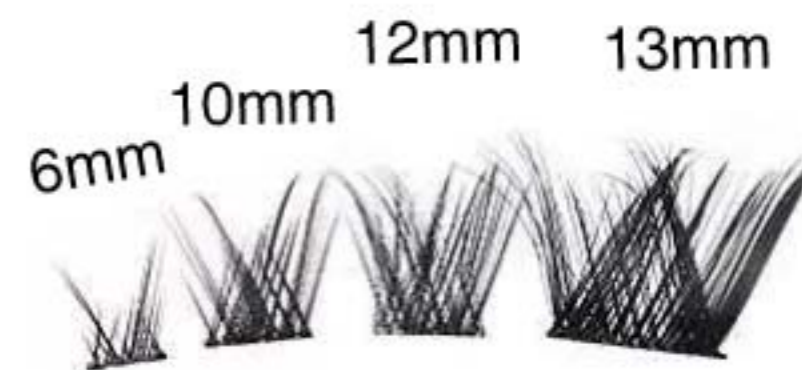
**After**





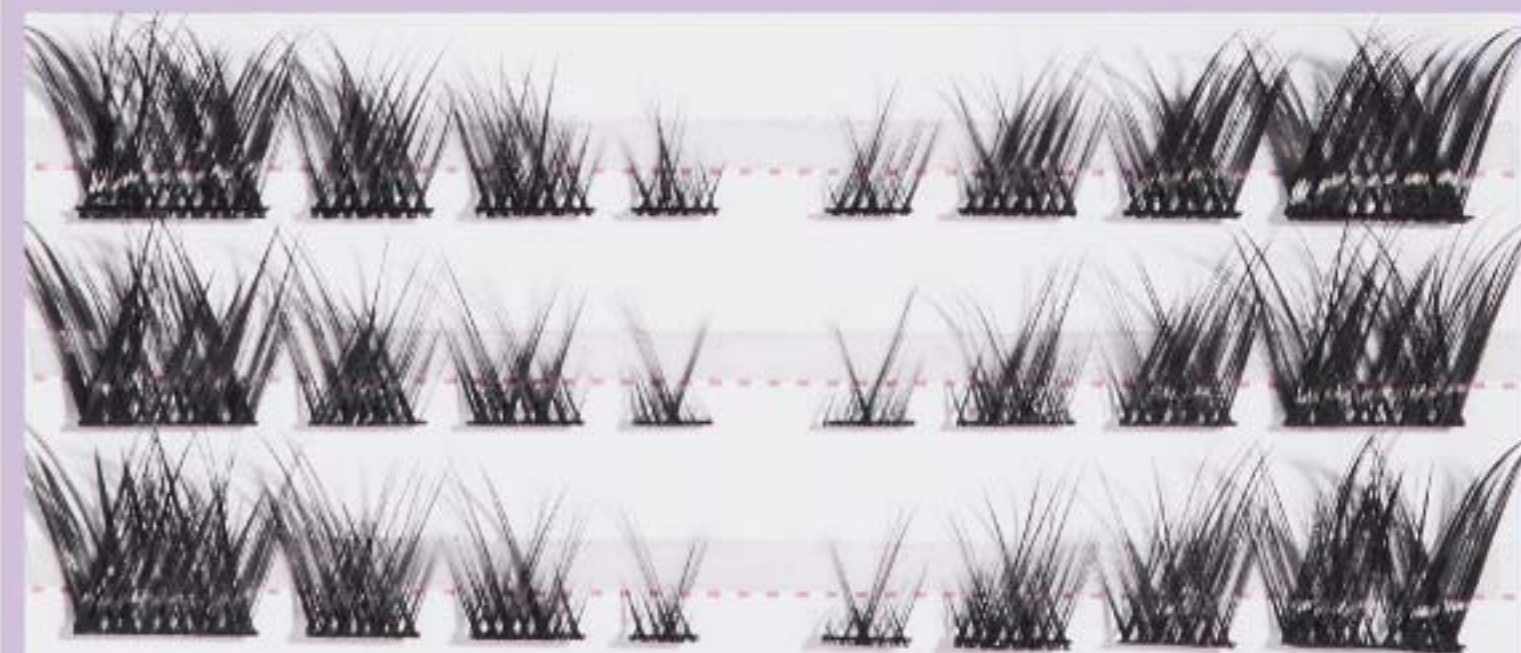
## Foxy Flair Segment Lashes

SKU.NO: 020233001964



L For Left Eyes

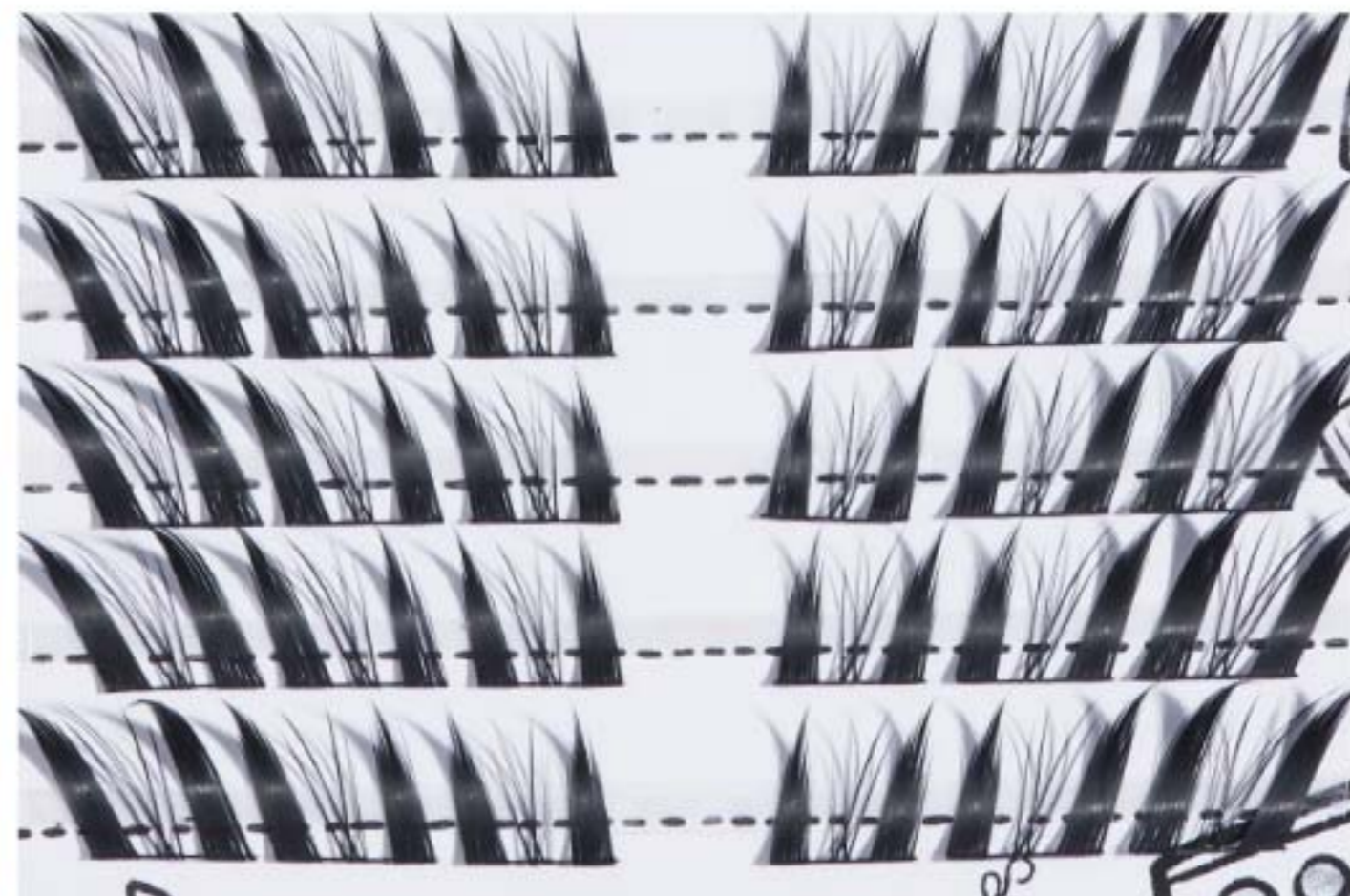
R For Right Eyes





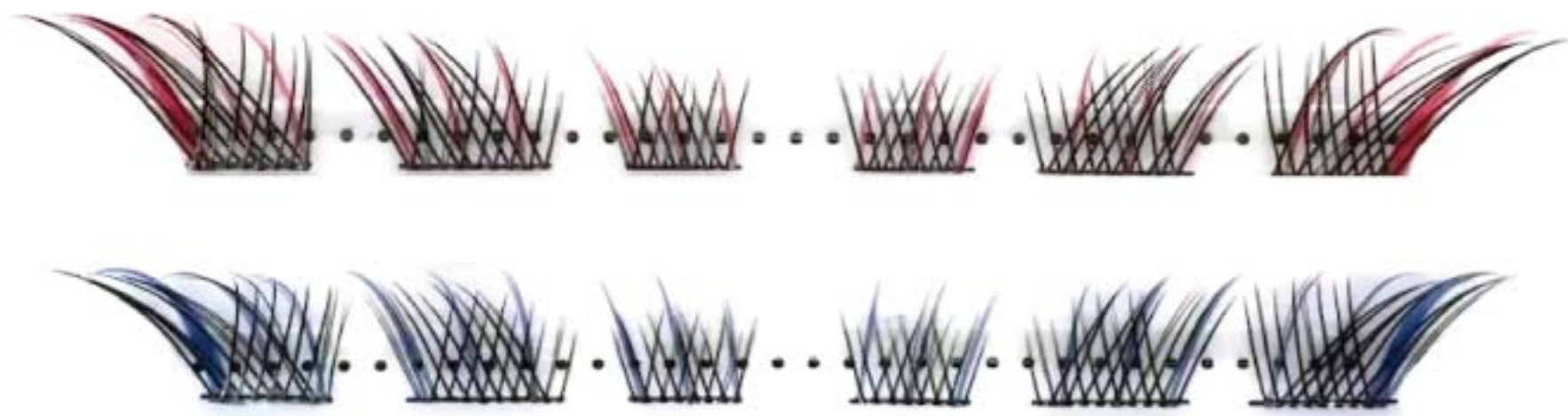
 **Enchanted Nine  
Tail Fox Segment Lashes**

SKU.NO:020233001964



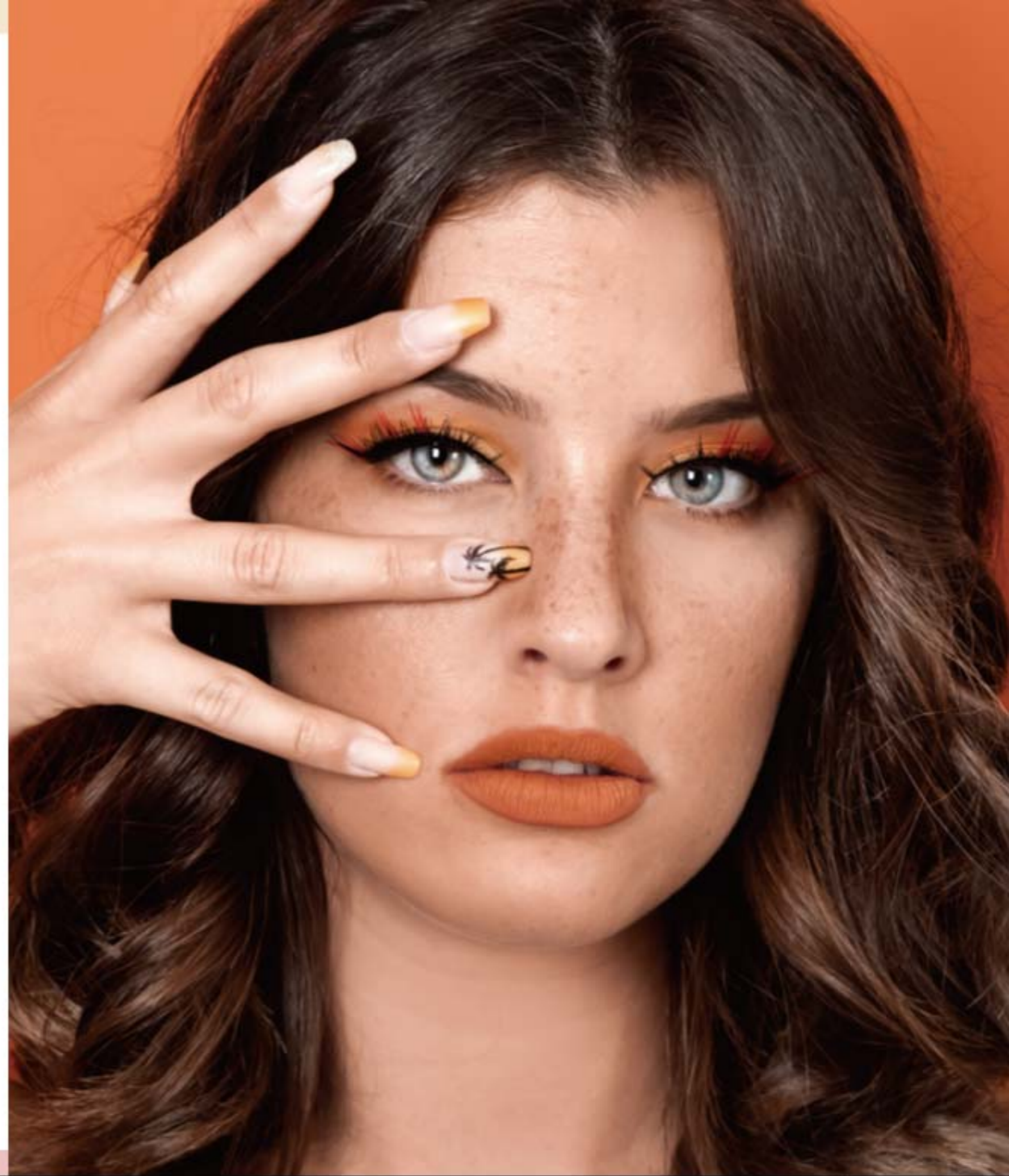
## Autumn Enchantment Fox Lashes

SKU.NO: 020233001975

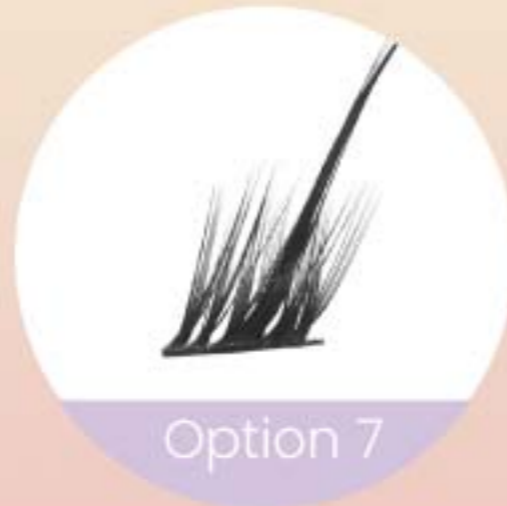


## Winter Mystique Fox Lashes

SKU.NO: 020233001976



# More styles





# DIY Eyelash Extension Kit

Portable Packaging

Easy Use on any Occasion





SKU:020233001970  
Material: Chemical fiber

## # DIY Lash Extension Kit

- All-Inclusive Kits: Everything you need for perfect lashes—clusters, bond & seal adhesive, tweezers, and spoolie.
- Customizable Looks: Create natural or dramatic styles.
- Long-Lasting Hold: Secure, all-day wear.
- Reusable Lashes: Durable and reusable clusters.
- Salon-Quality at Home: Achieve professional results easily.
- Perfect for Any Occasion: Ideal for daily wear or special events.



Superfine Band



Easy to Apply

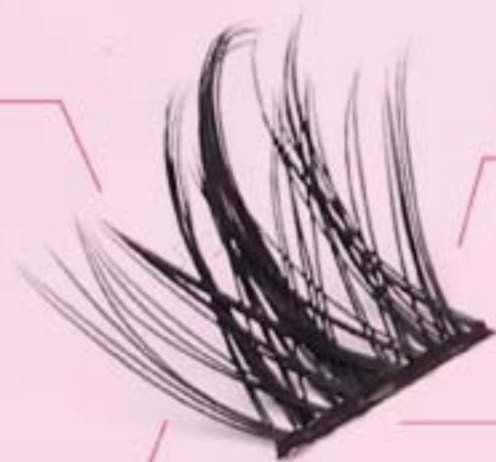


Stable Curl



High quality

# # DIY CLUSTER Lashes Size



# # DIY Lashes 3 Advantages



BEFORE



AFTER



Thin and  
lightweight



Lashes are distinct  
and elegant

1

## ▪ Friendly for beginners

Cluster eyelashes can be worn according to the matching length; Enjoy lash extension at home, DIY your beauty

2

## ▪ Different look depend on you

The eyelash extension kit can be diy according to the style you want to showcase

3

## ▪ Save time and budget

These big set offers all you need to work with at home; Save time and budget to go to lash extension salon

# # More Option



120pcs



Length:10/12/14/16mm  
The set includes: eyelash+tweezers+  
Double-ended glue



144pcs



Length:10/12/14/16mm  
The set includes: eyelash+tweezers+  
Double-ended glue



96pcs



Length:10/12/14/16mm  
The set includes: eyelash+tweezers+  
Double-ended glue+eyelash comb

# # More Option

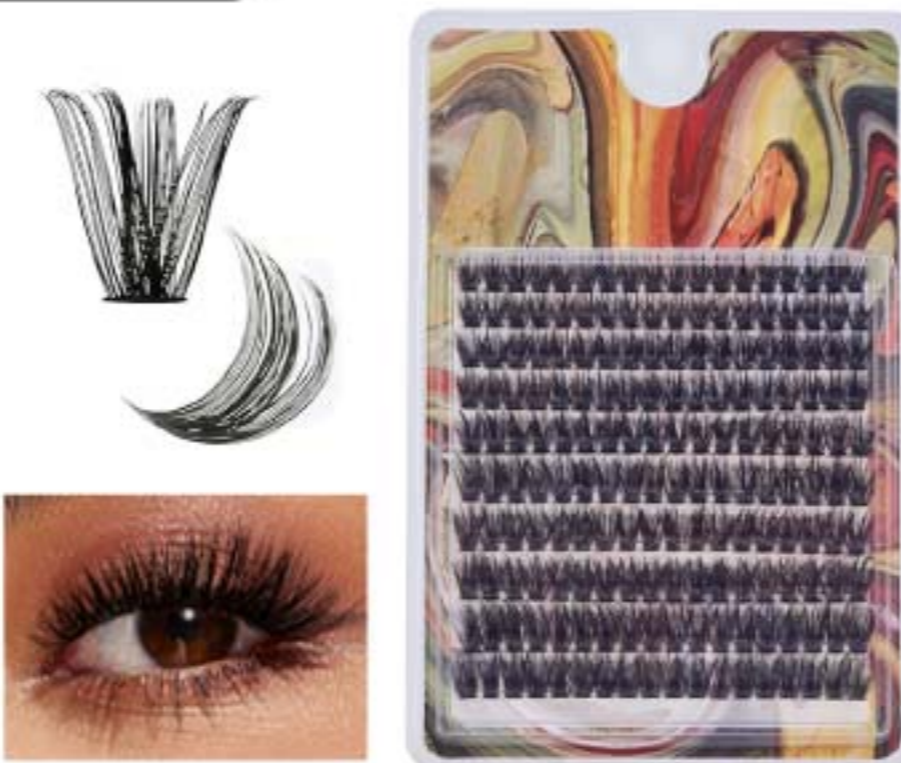
120pcs



Length: 10/12/14/16mm

The set includes: eyelash+tweezers with an eyelash comb+Double-ended glue

180pcs



Length: 10/12/14/16mm

120pcs



Length: 10/12/14/16mm

The set includes: eyelash+glue



# Natural Look

**SUPER LASHES**

**Designed for a “no makeup, makeup” aesthetic.**

**New  
Style**



# No makeup, makeup

NATURAL LASHES

## Realistic and 3D Effect

Mimics natural lashes with depth and dimension.

## No Shaping Required

Straight curve ensures a perfect fit without additional styling.

## Flawless Application

Seamlessly blends with natural makeup for an invisible finish.



## Natural and Seamless

Provides a smooth, lifelike appearance.

## Feathered and Soft

Creates a soft, fluffy look for everyday elegance.



Clear & flexible  
lash band



Non-toxic and  
cruelty-free



Natural-looking



Easy to apply  
and blend

## Natural Effortless, Sheer Band

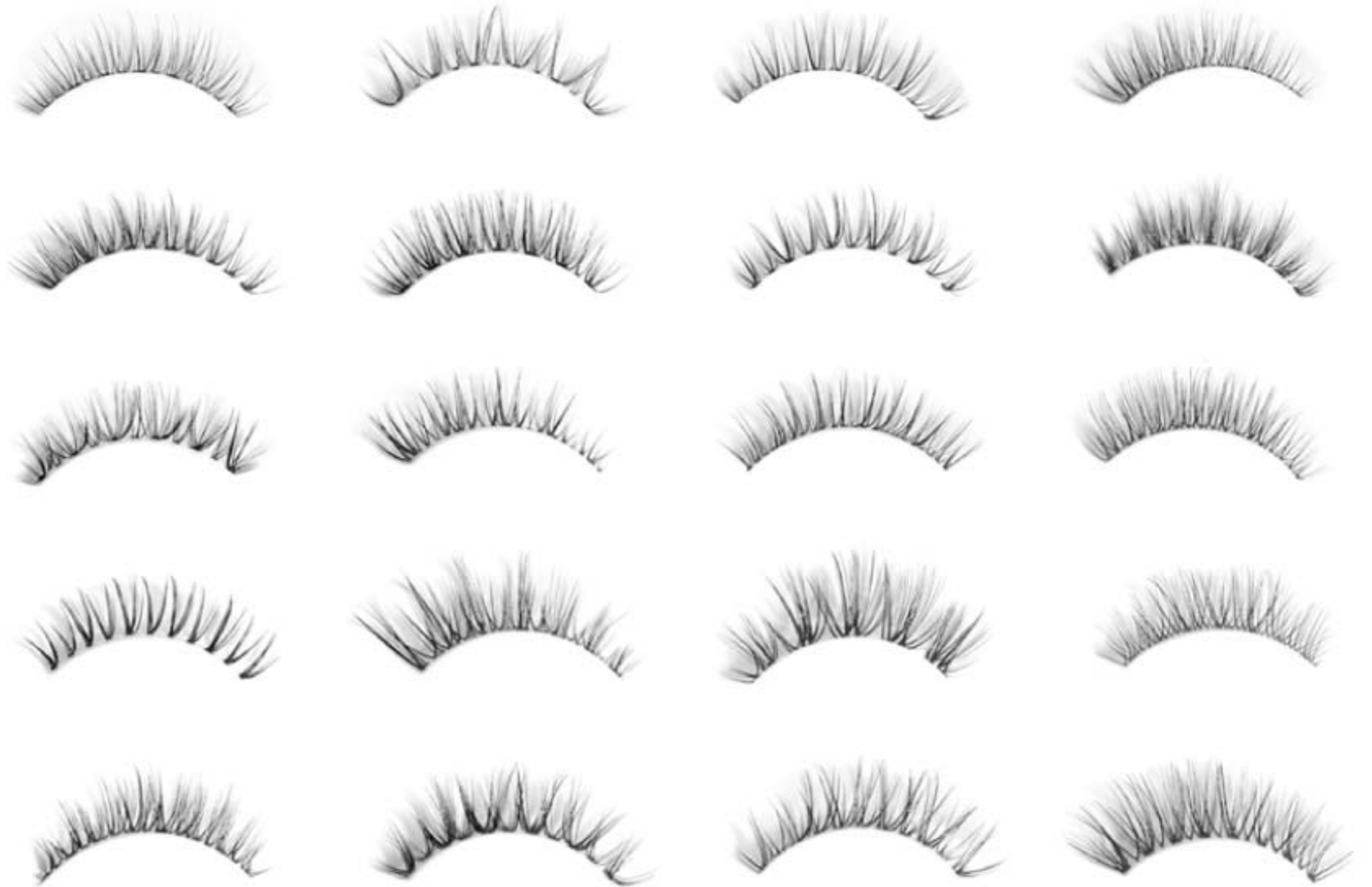
Designed for a “no makeup, makeup” aesthetic, Seamlessly undetectable finish.





# Strip Lash Styles

Can be customized different styles

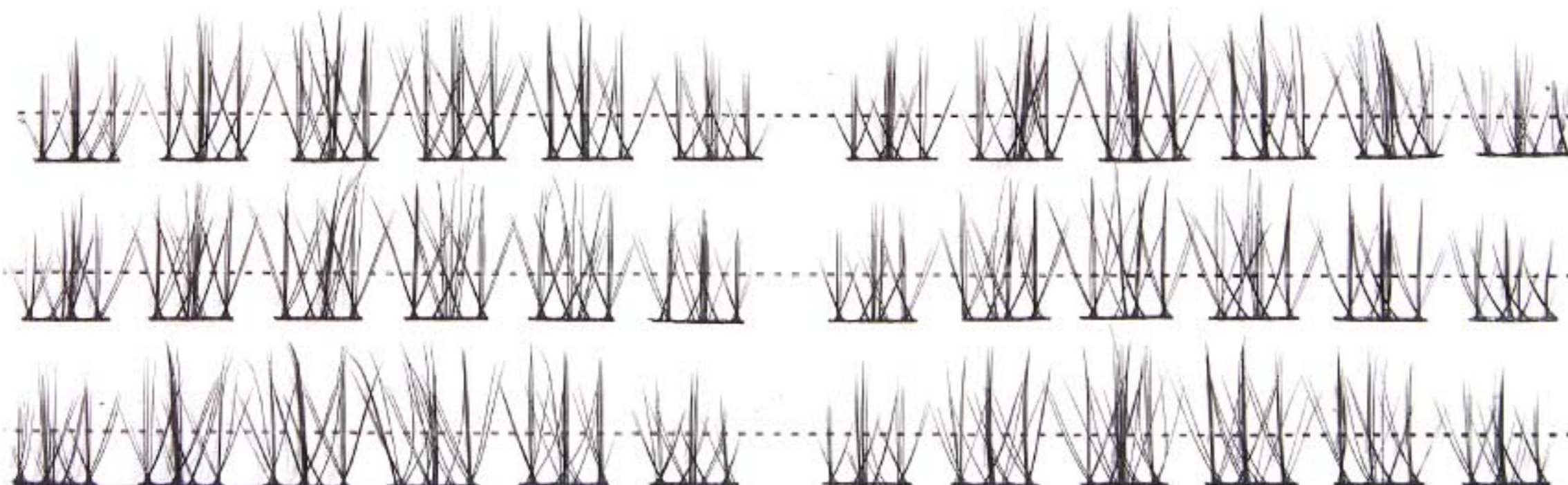
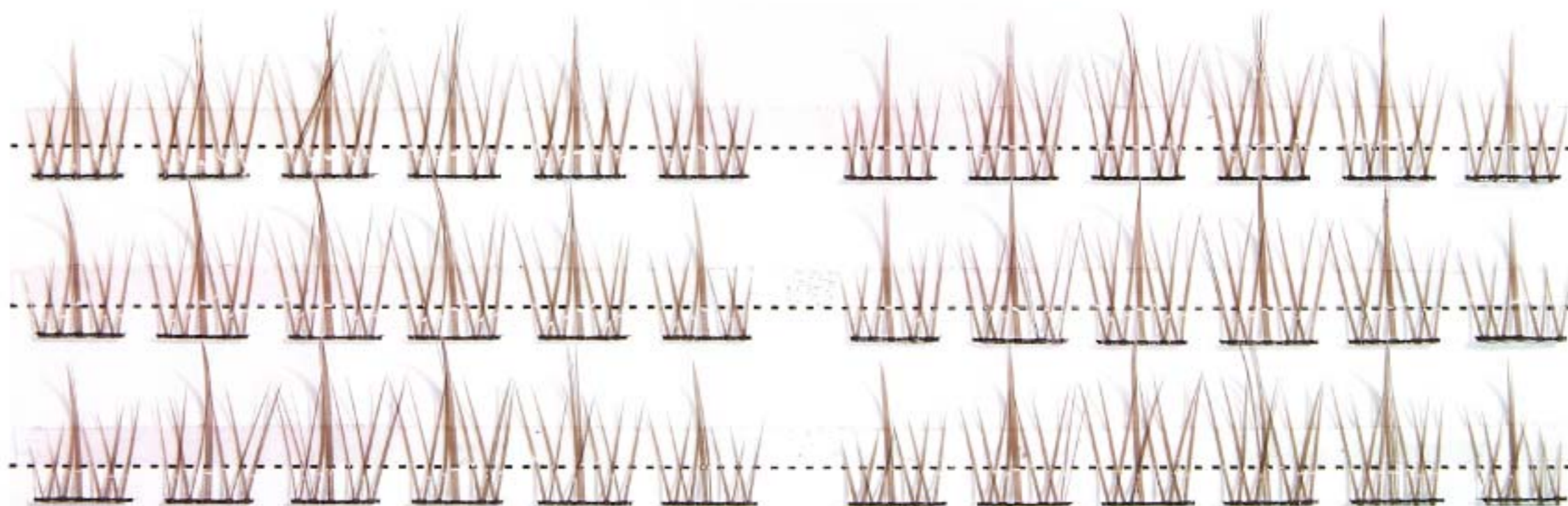


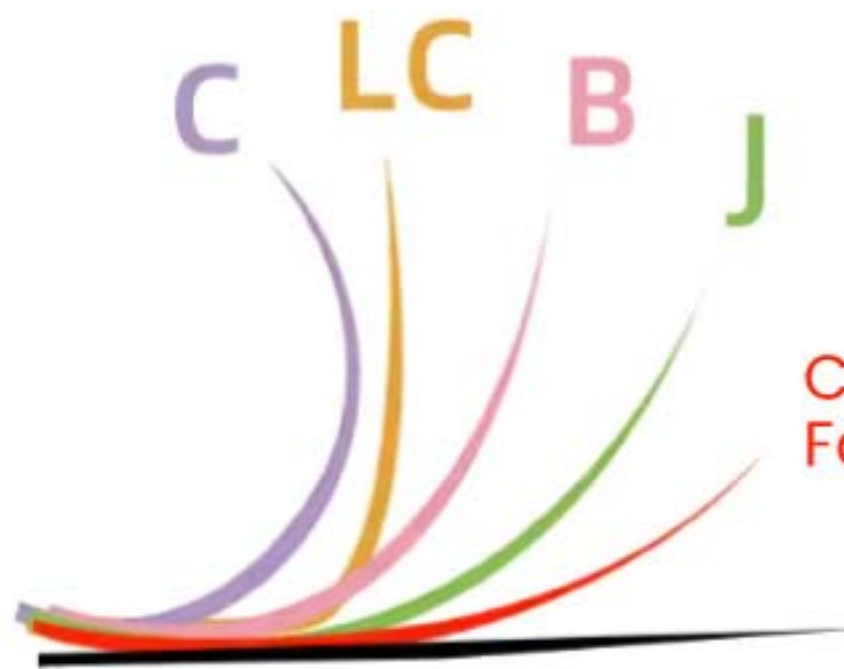
# Cluster Lashes Styles

Can be customized different styles

## Caramel Color Segmentation

Subtle caramel hue for a natural, harmonious blend with light hair.





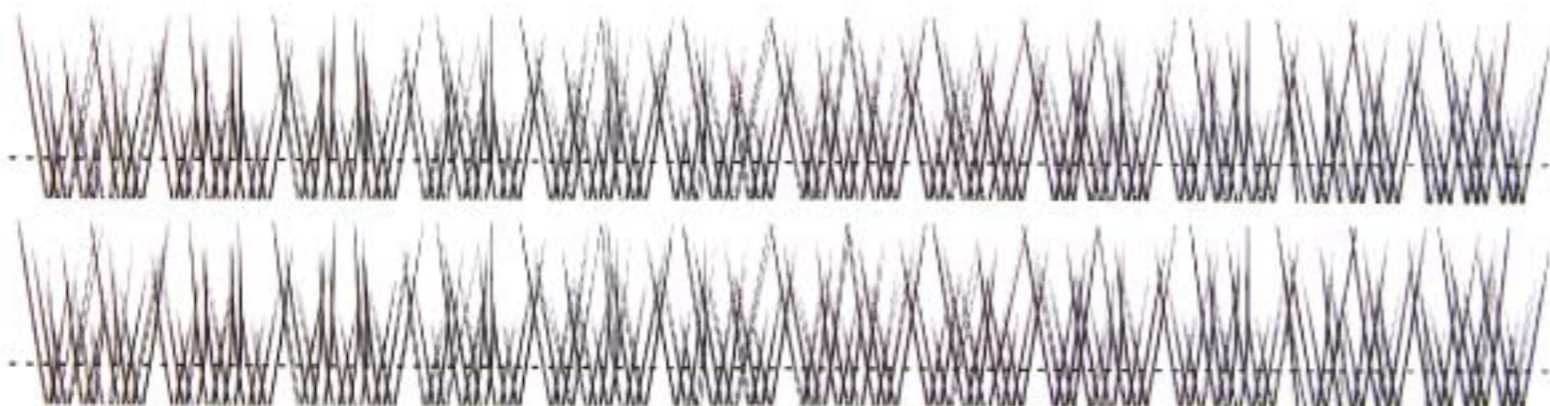
Curved Baby  
Faux Lashes

Straight Baby  
Faux Lashes



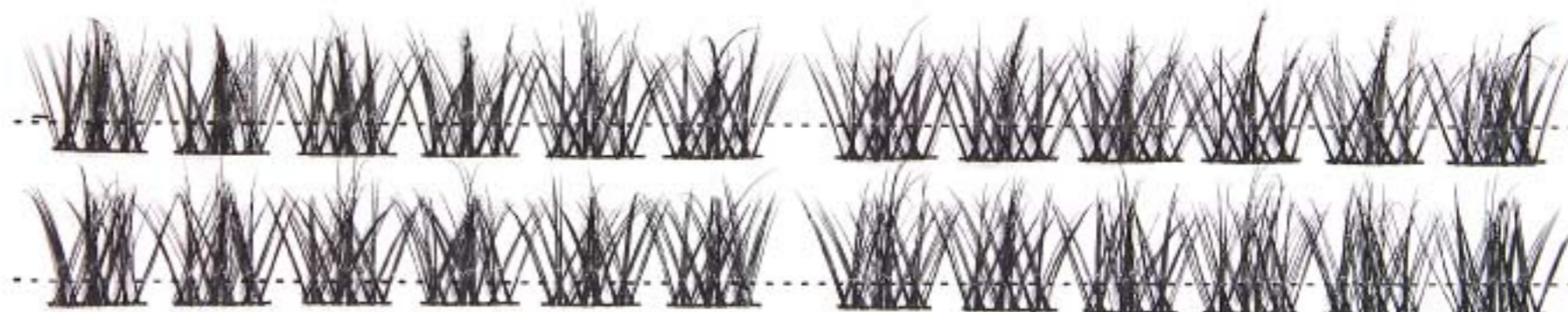
## **Straight Baby Faux Lashes**

Our most natural lash - These lashes mimic real baby lashes, offering a super natural-looking that enhances your look effortlessly



## **5D Curved Baby Faux Lashes**

5D fluffy & natural lash- designed to deliver the authentic effect



## **Curved Baby Faux Lashes**



# Natural Mix Color Lash

## Reintroduce the smokey brown eye

**The brown smokey eye will return in full force as this season leans into warm caramel tones.**

**Key words:** classic, sultry, desert, rich, caramel, mysterious

**Product applications:** eyeshadow, eyeliner, blush, bronzer, mascara

**Key finishes:** matte, satin, metallic, glitter, shimmer

WGSN



## Everyday Brown Blended

---

- ✓ The unique blend of black and brown hairs create a natural glam
- ✓ Designed with a **60/40 blend of black and brown fibers**
- ✓ **Complement various hair colors and skin tones**, blending effortlessly with your natural lashes.



FEATURING A  
60/40 BLEND OF  
*black & brown*  
LASH FIBERS



# Natural Mix Color Lash

SKU.NO.: 20233001487

Perfectly Match With All Hair And Skin Tones



Cruelty-free, safe  
comfortable & soft



Suitable for  
various occasions



The unique blend of black and  
brown lashes works well with  
all hair and skin tones.



# Natural Mix Color Lash

SKU.NO.: 20233001950



# Party-Ready Lashes

## Mixed Color False Lashes

- **Versatile for Various Occasions:**  
Ideal for stages, parties, and festivals with its vibrant yet tasteful design.
- **Natural and Seamless:**  
Provides a flawless, invisible look that blends effortlessly.



## Holiday Glam Lashes

Sparkle Fest Sequin False lashes /  
Multicolored individual / Mixed Color Party Lash



## Party Makeup Looks

WGSN

Encourage unexpected applications with creative brights



## Multicolored Individual Flares

Creative by applying them in any pattern—above your natural lashes

**Mix natural lashes , match customized look.**

These lashes are ideal for making a statement at **music festivals, football games, parades or everyday self-expression.**



Blue & Teal Flares paired with  
Sheer Invisible Band Sultry



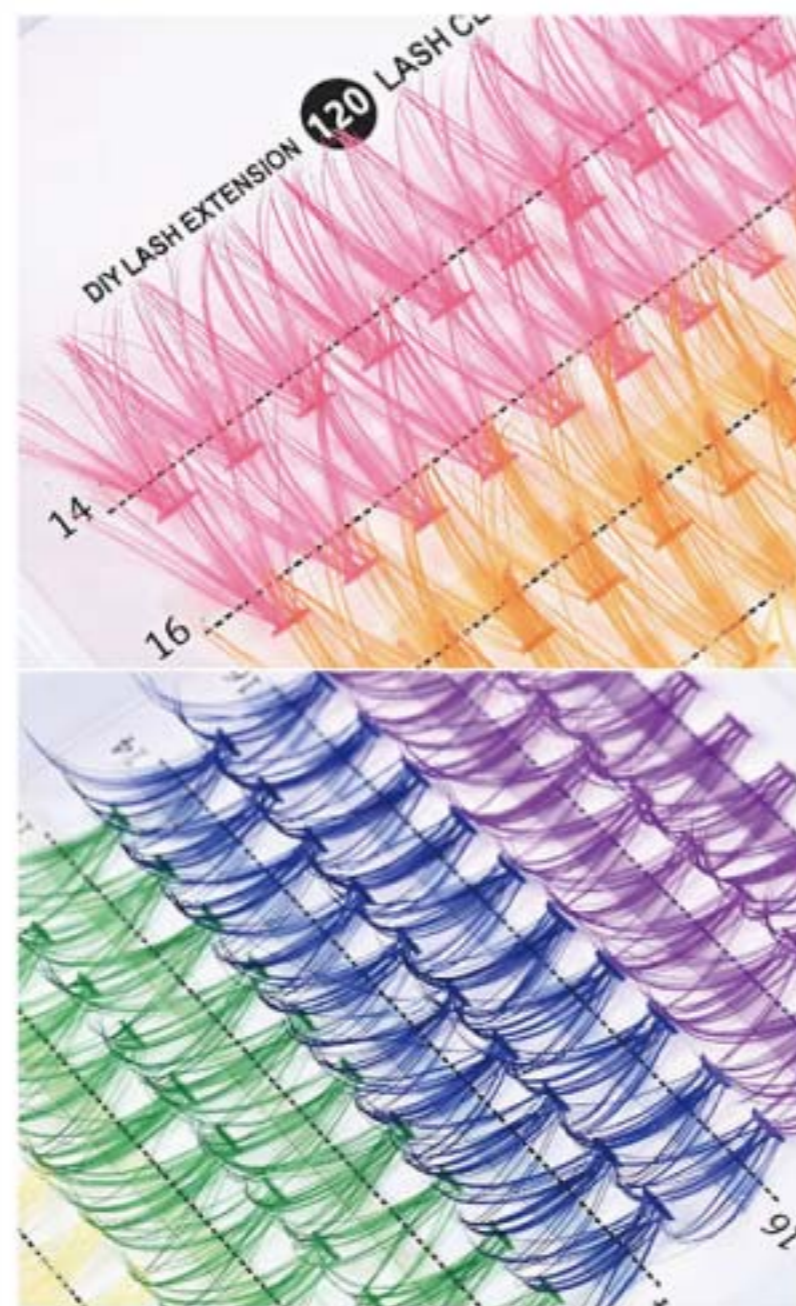
Teal & Green Flares paired  
with 3D Faux Mink Miami

**Perfect for all eye shapes**  
Reusable up to 3 wears



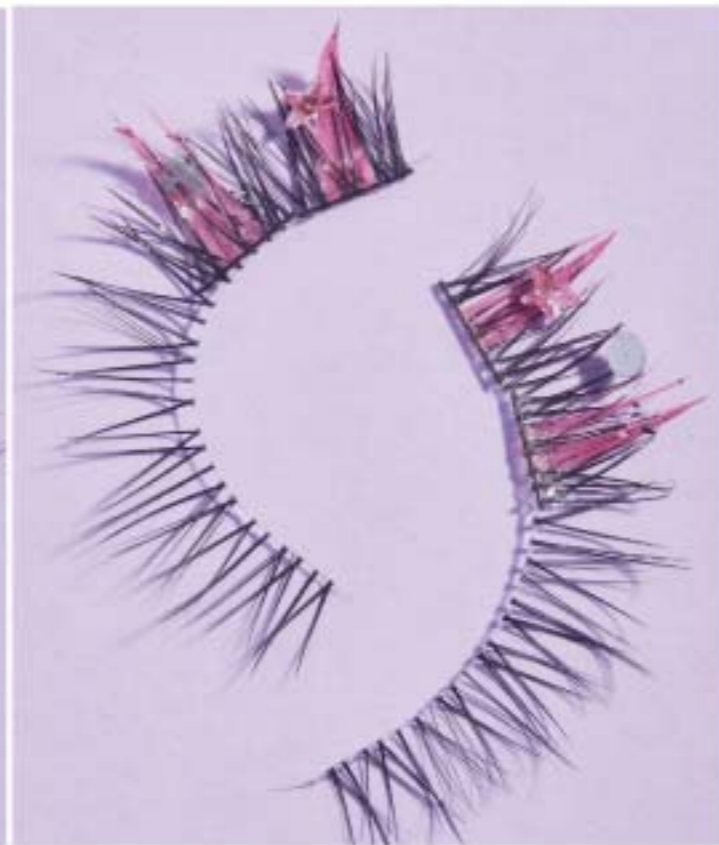
# Multicolored Individual

Mix natural lashes , match customized look. ideal for making a statement at music festivals, football games, party,parades or everyday self-expression.



# Sparkle Fest Sequin False Lashes

SKU.NO.: 20233001935



# Sparkle Fest Sequin False Lashes

SKU.NO.: 20233001935

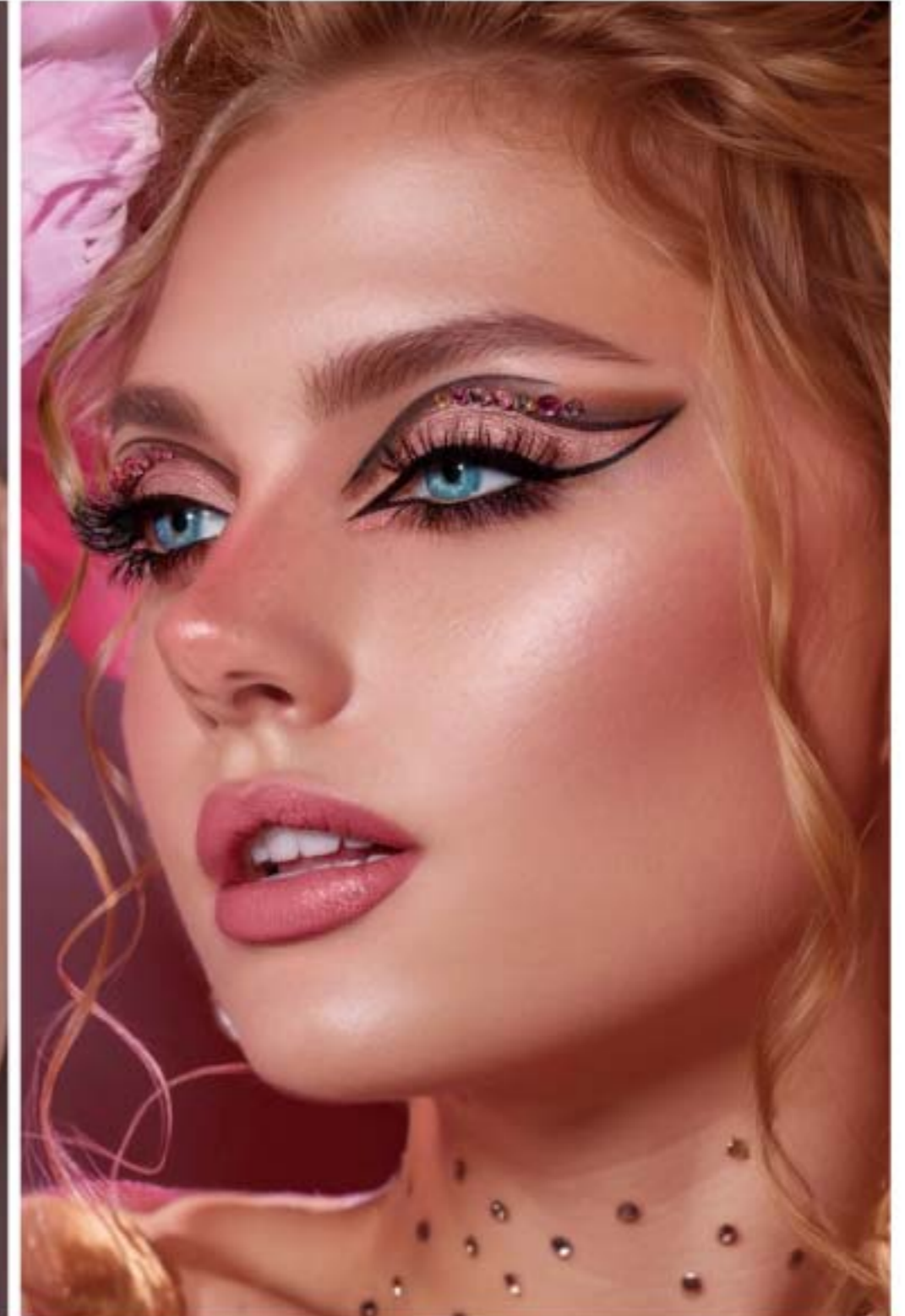


# Mixed Color Party Lash

SKU.NO.: 20233001952



Holiday  
Glam



# Mixed Color Party Lash

SKU.NO.: 20233001952



# Bouncy Lashes



- **Stretchable**
- Ultra-flex elastic lash band
- **Fit for all eye shapes**
- Ensures a better fit for the upper eyelid



Stretch-fit  
technology



Comfortable  
& lightweight



For experienced  
lash user



# Suitable For All Eye Contours



More Options:

SKU.NO.: 020233001931

Material: Fiber



Scenarios Fit For Recommendation

One Stop Beauty Accessory Supply



Option A



Option B

## A diagram of a hairbrush with a curved black handle and numerous black bristles. Yellow dashed arrows are overlaid on the bristles, pointing from the base of the brush towards the tips, indicating the direction of hair movement or styling.

Creates a striking, 3D effect that enhances your look in photos.



Natural Curls / Natural Curls / Natural Curls / Natural Curls / Natural Curls  
Woolly Curl Lash / Woolly Curl Lash / Woolly Curl Lash / Woolly Curl Lash / Woolly Curl Lash

Curl Lash / Woolly Curl Lash / Woolly Curl Lash / Woolly Curl Lash / Woolly Curl Lash

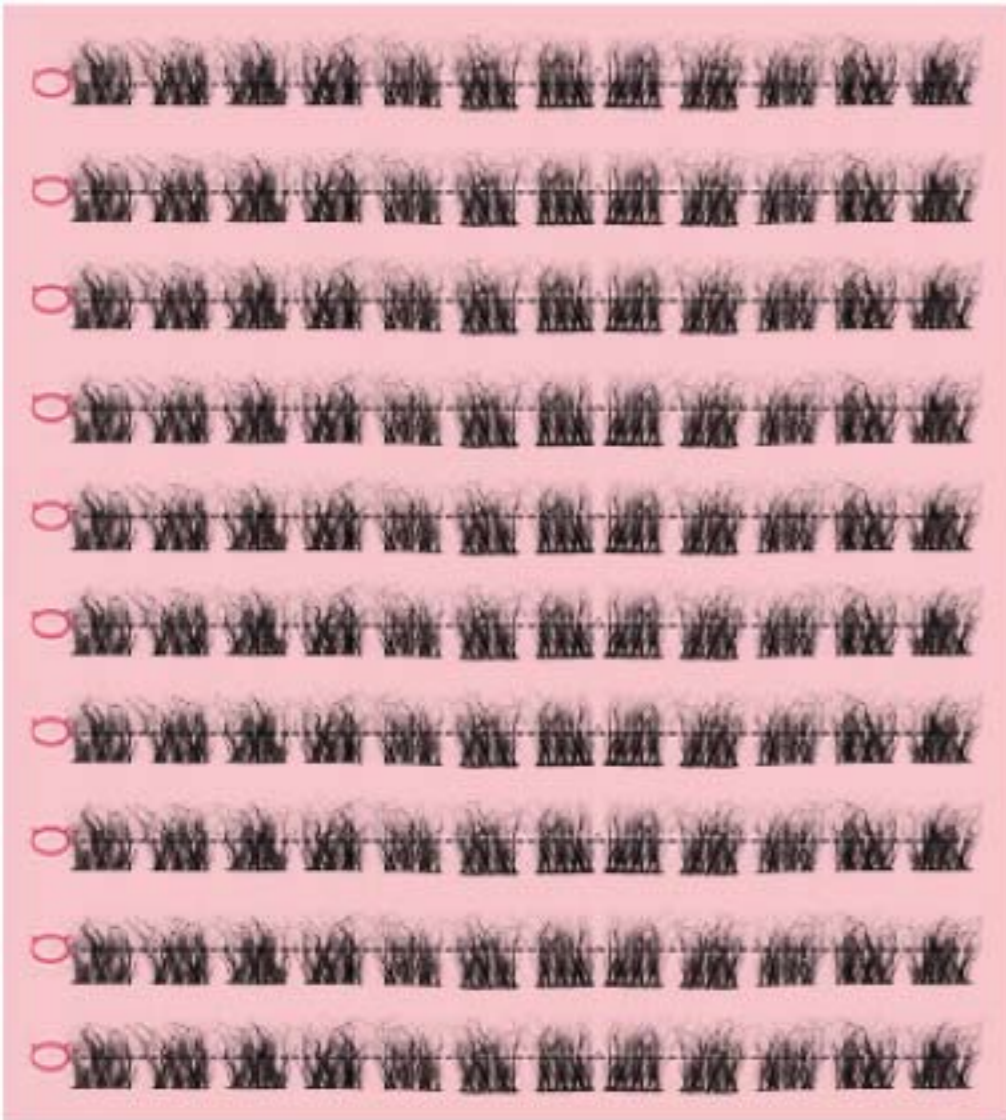


# Strip Lash Styles

Can be customized different styles

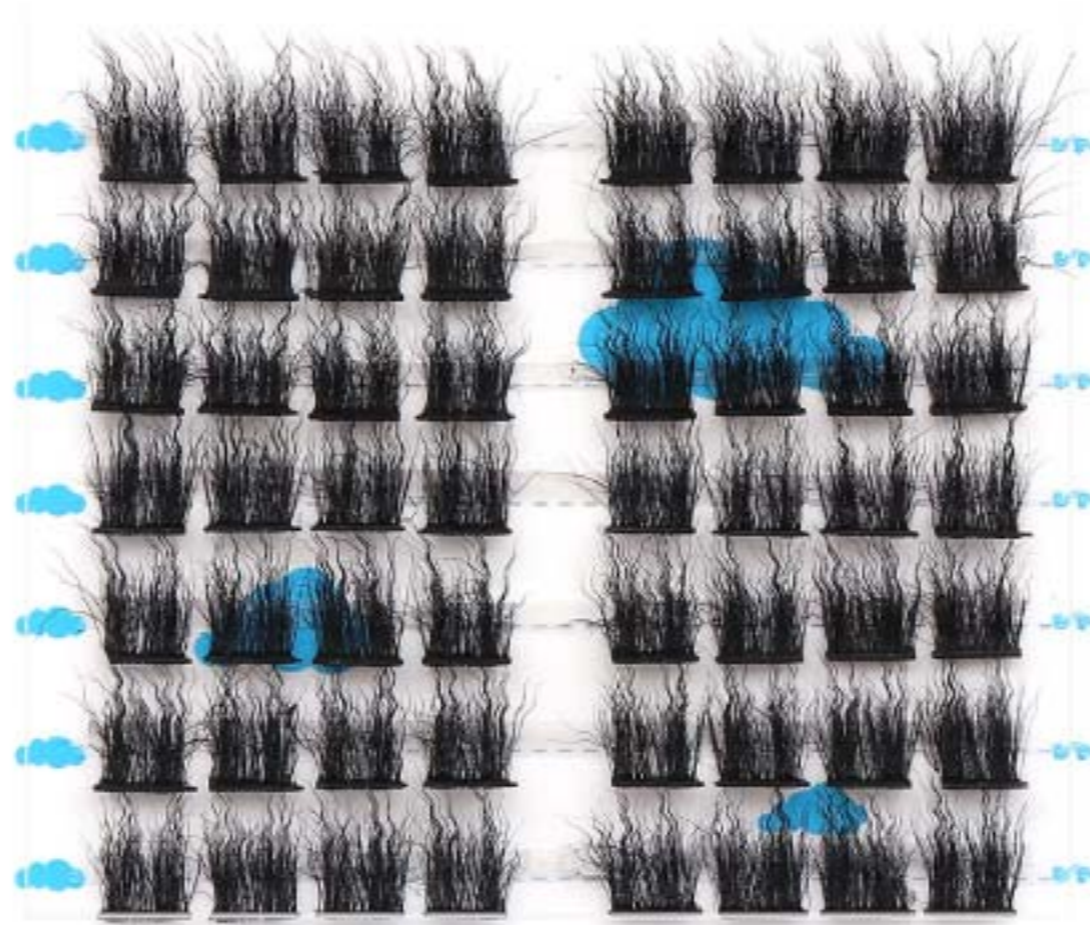
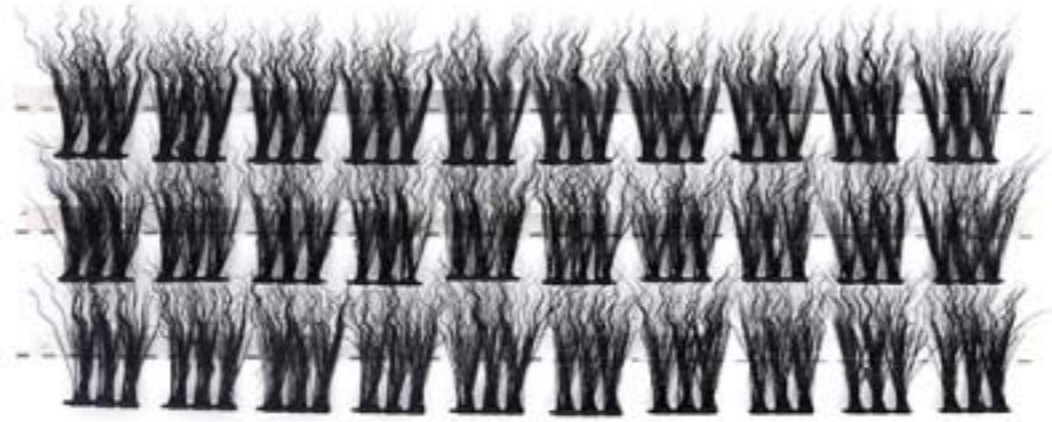






# Cluster Lashes Styles

Can be customized different styles



# Ultra Soft Ellipse (Flat)

False Eyelashes

New  
Structure

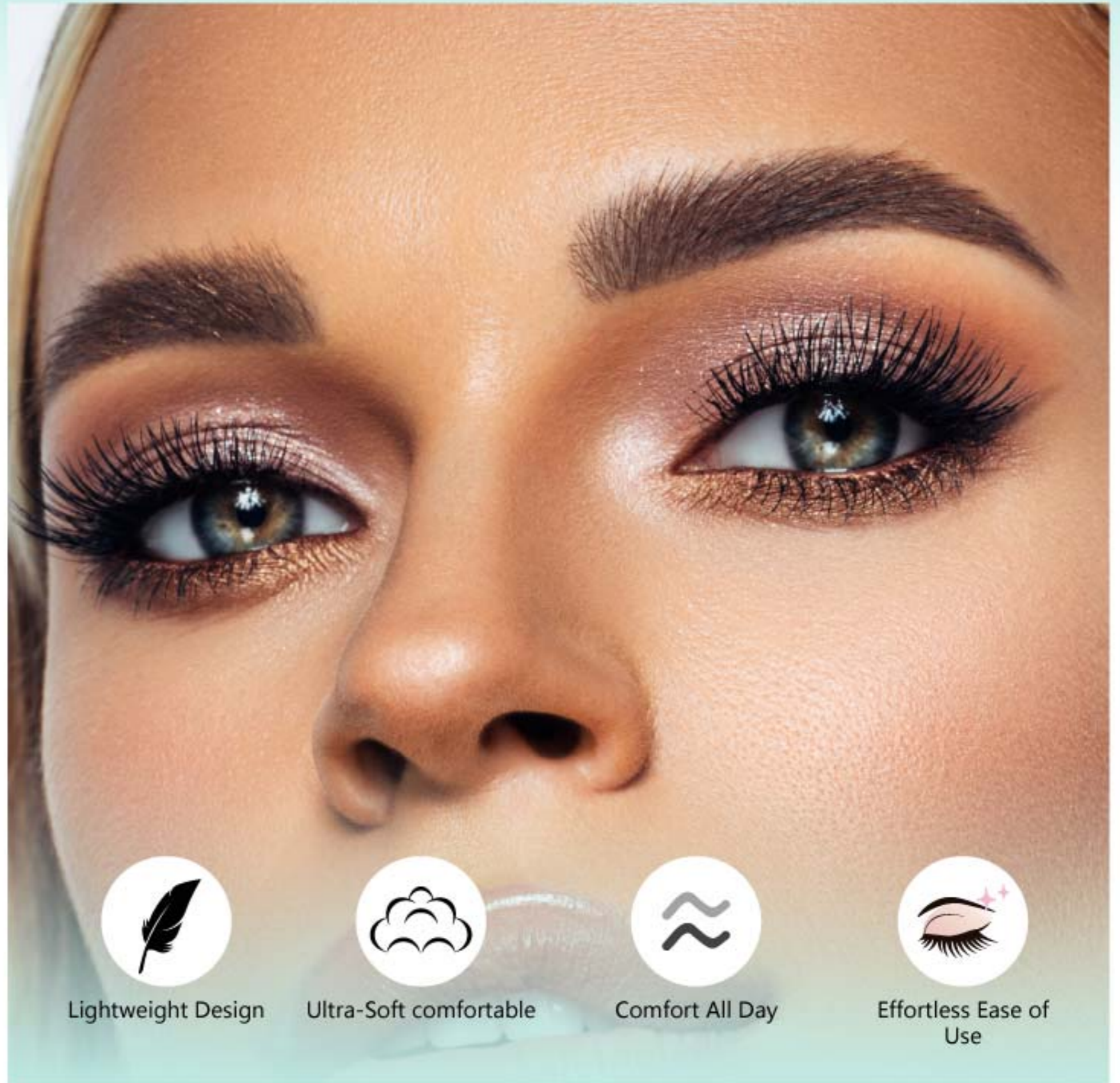
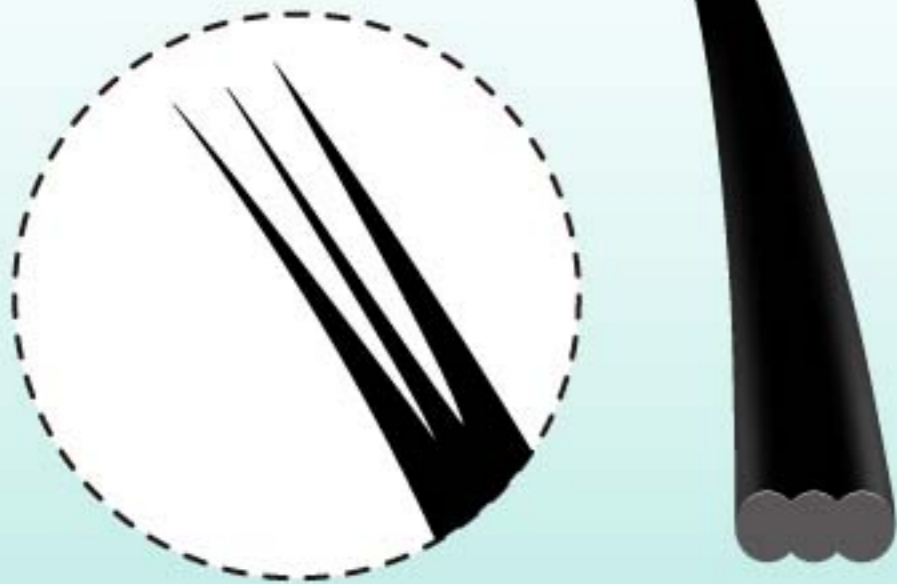
20% lighter



Three split tips

Flat base

Lighter & softer



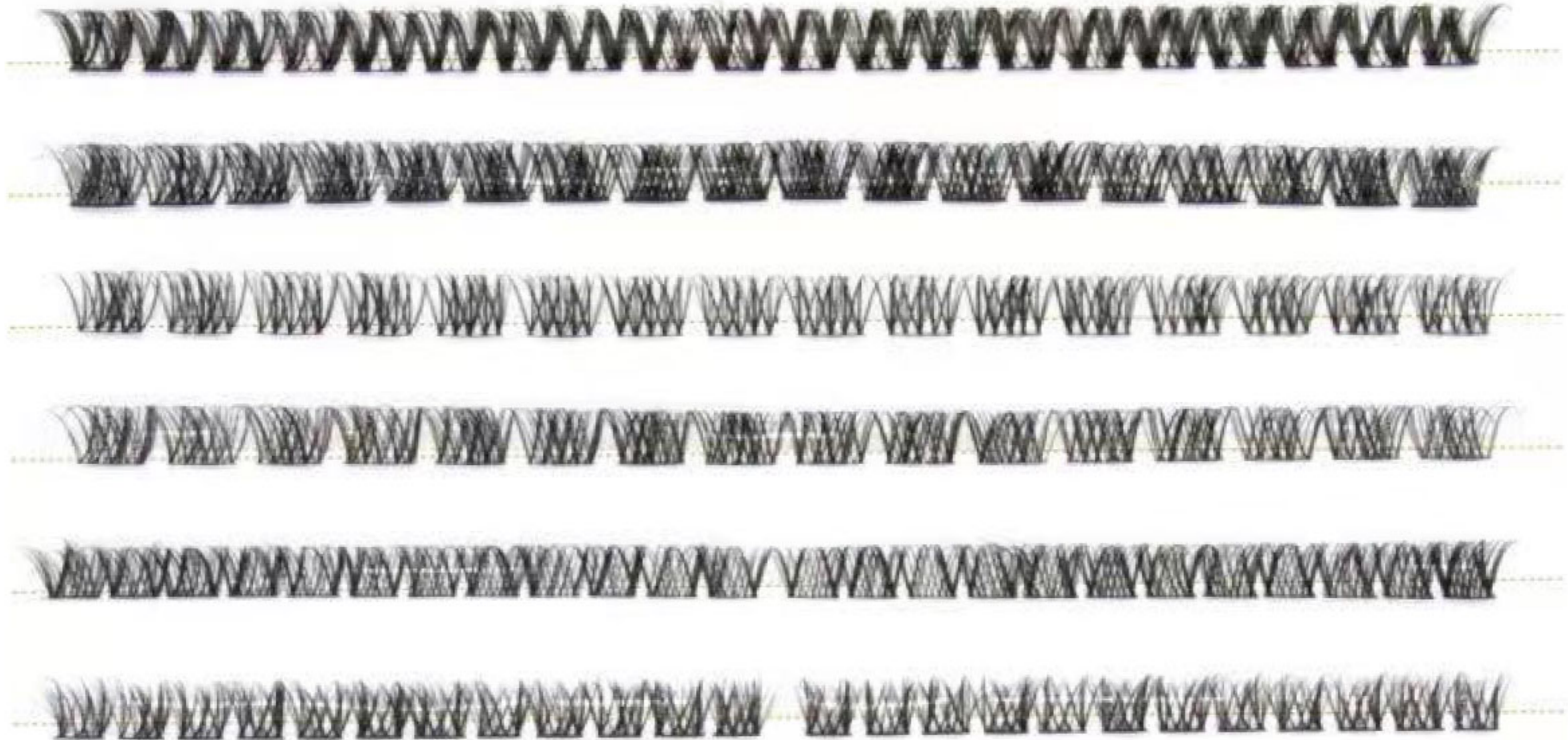
# Strip Lash Styles

Can be customized different styles



# Cluster Lashes Styles

Can be customized different styles

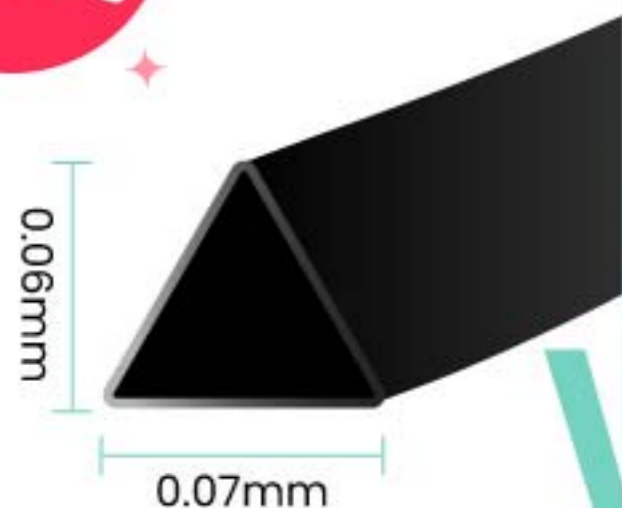


# Ultra Soft Triangle Filament

Natural False Lashes

**44.8% lighter**

New  
Structure

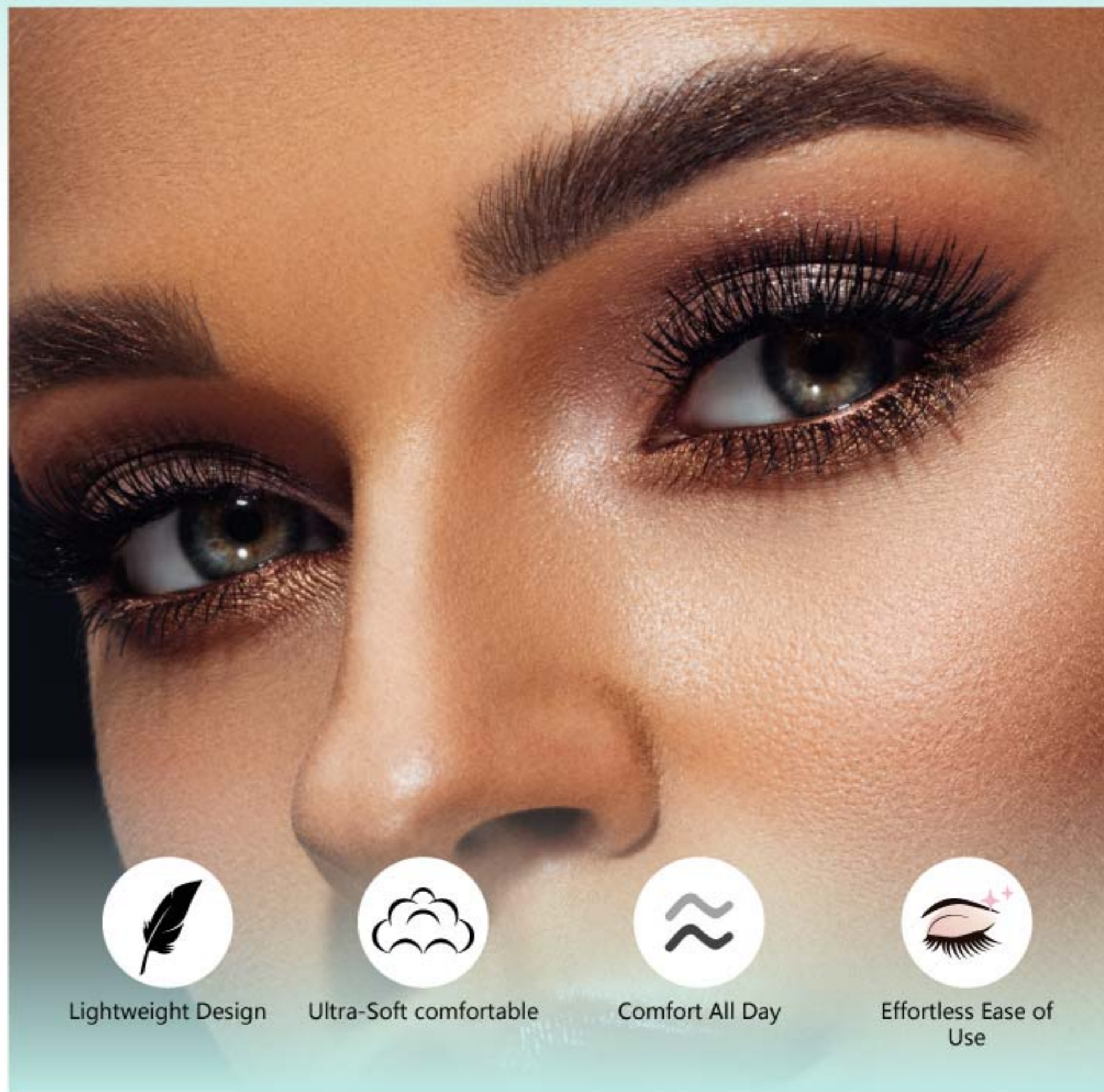


Area=0.0021m<sup>2</sup>

vs



Area=0.0038m<sup>2</sup>



Lightweight Design



Ultra-Soft comfortable



Comfort All Day



Effortless Ease of Use

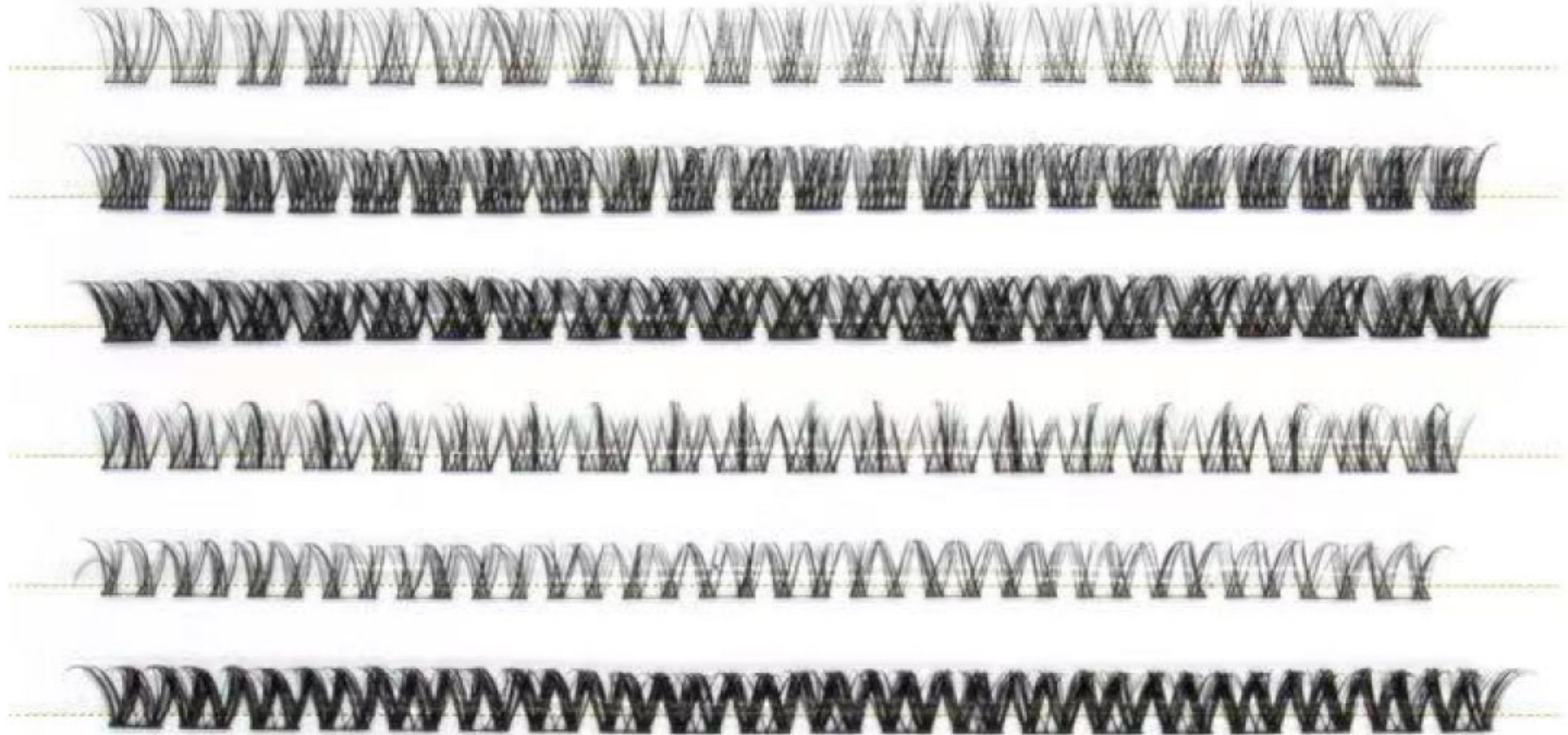
# Strip Lash Styles

Can be customized different styles



# Cluster Lashes Styles

Can be customized different styles



30%  
lighter

# HOLLOW ROUND

FALSE NATURAL EYELASHES

SKU.NO.: 020233001930

Material: Fiber



HOLLOW ROUND

ORDINARY

Customizable Style:



Pair Lash



Cluster Eyelash

Scenarios Fit For Recommendation:



Option A

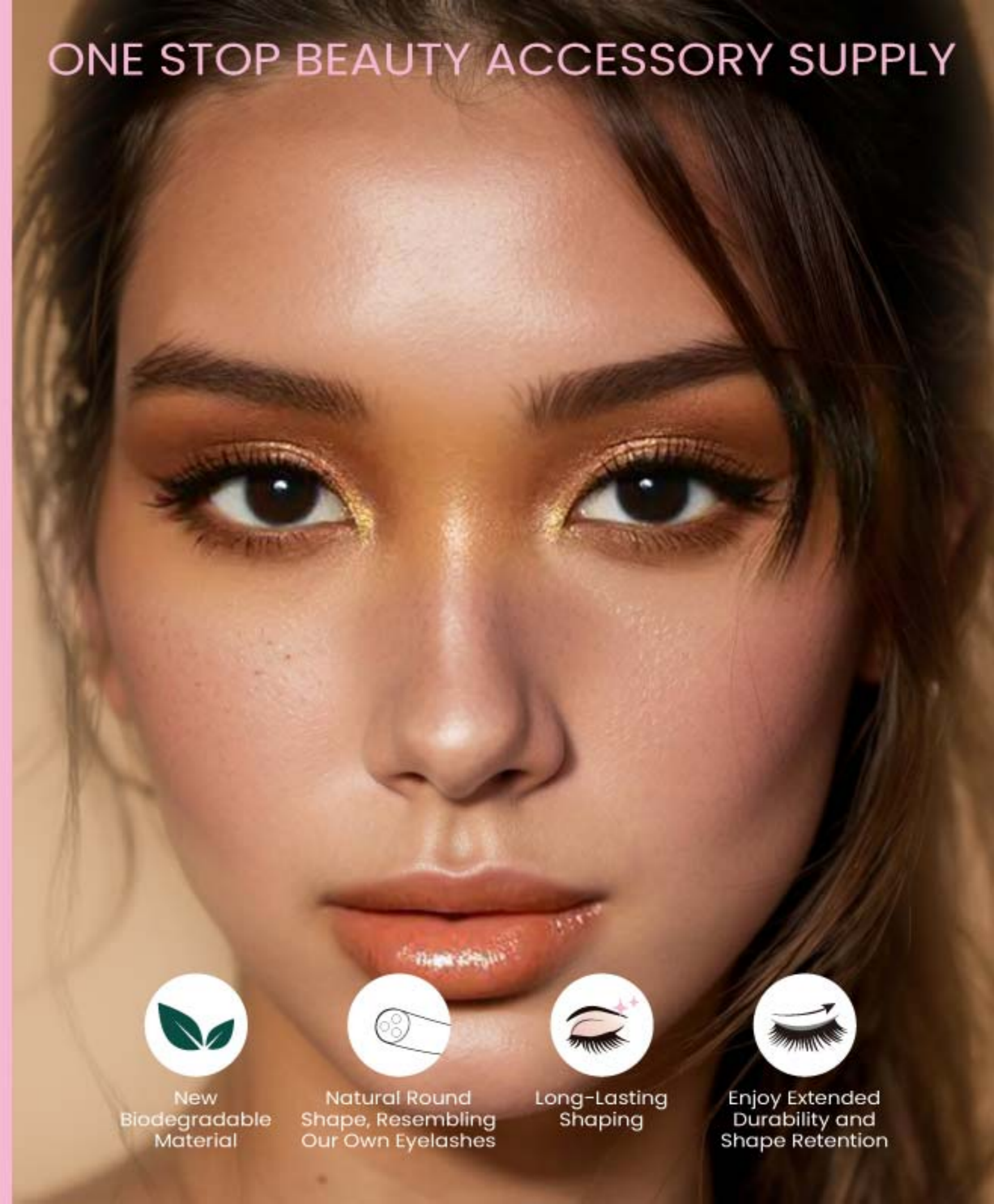


Option B



Option C

ONE STOP BEAUTY ACCESSORY SUPPLY



New  
Biodegradable  
Material



Natural Round  
Shape, Resembling  
Our Own Eyelashes



Long-Lasting  
Shaping



Enjoy Extended  
Durability and  
Shape Retention



# BIODEGRADABLE FALSE EYELASH

SKU.NO: 020233001929

Material: Fiber

## Eye-Opening False Lash Silhouette



Sweeping, Staggered Lash Fiber Cluster Lengths

- Comfortable cotton band
- Lite as a feather
- Tapered end



Biodegradable



Ecofriendly



Cruelty-Free  
and Vegan



Natural look  
false eyelashes

Biodegradable paper carton is made of recycled materials

Material: sugarcane pulp



# Customizable Style



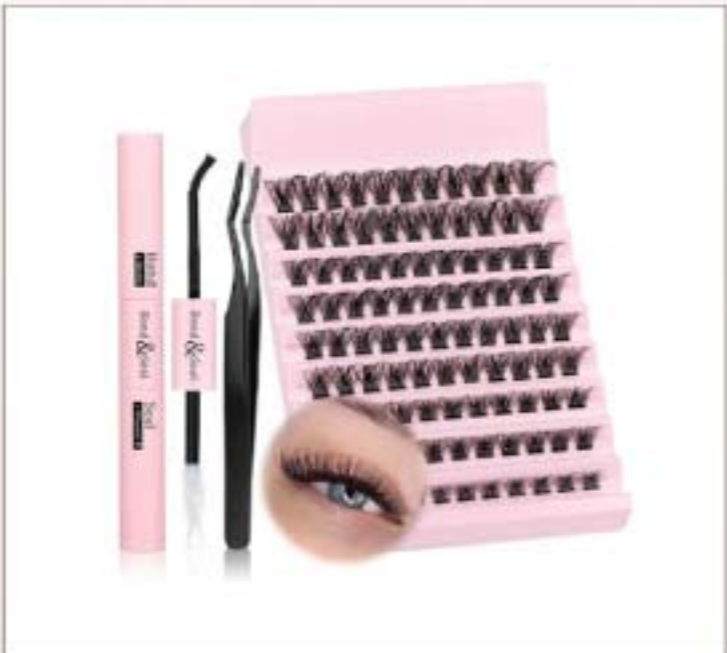
◀ Pair Lash

◀ Cluster Eyelash

## Scenarios Fit For Recommendation



Option A



Option B



Option C



# Lower Lashes



A: Cluster lashes  
**Beginner-friendly**



B: Strip lashes  
**For experienced lash user**

- Defines lower lash line
- Create a bigger, more expressive eye look.



# Luxe Lower Lashes

## Strip Lashes



### Quick Application:

Achieve a flawless look effortlessly and in no time.

### Enhanced Facial Proportions:

Achieve a more balanced and refined facial appearance.

### Realistic Hair Simulation:

Mimics natural hair for a fuller, more authentic appearance.

### Lightweight Comfort:

Experience a barely-there feel for all-day wear.

### Invisible Clear Band:

Weightless and flexible, ensuring a seamless and natural appearance.

### Variety of Colors and Styles:

Effortlessly coordinate with different looks, enhancing your overall style.



# Mixed Color Lower Lashes

## Strip Lashes



### Perfect Pairing with Mixed Color lower Lashes:

Seamlessly complements your lower lashes for a cohesive and striking look.

### Naturally Enlarges Eyes:

Enhances the appearance of your eyes, making them look bigger and more captivating.

### Unique in the Market:

A one-of-a-kind product with no mixed color under lashes currently available elsewhere.



### Versatile Makeup Matching:

Ideal for various makeup styles, adding depth and dimension to your look.

### Shine on Every Occasion:

Ensures you stand out and sparkle, no matter the event or setting.



# Glue-Free Flicker Lower Lashes

## Cluster Lashes



### No Glue Needed:

Experience the convenience of exclusive self-stick technology—simply press on and go!

### Easy Application:

Effortlessly apply lashes without the mess or hassle of glue.

### Trending Lower Lashes:

Features the latest must-have lower lash styles that everyone is talking about.



No Glue Needed



### Eye-Enhancing Effect:

Naturally enlarges your eyes with a mix of long and short lashes for a striking look.

### Natural Yet Stylish:

Offers a balanced look that is both natural and stylish, perfect for any occasion.



# Animal series Lower Lashes

## Cluster Lashes



### Natural and Eye-Enhancing:

Naturally enlarges eyes, providing a seamless transition for a realistic look.

### Effortless Application:

Easy to apply, perfect for those with sparse lower lashes.

### Midface Shortening:

Creates a more balanced and refined facial appearance by shortening the midface.

### 3D and Layered Effect:

Instantly transforms your eyes into manga-like, photo-ready perfection with a cool and sweet vibe.

### Lightweight Comfort:

Offers a delicate, lightweight feel for comfortable all-day wear, enhancing eyes with a natural, seamless fit.

### Dynamic and Versatile:

Adds lively and vibrant energy to your look, perfect for a natural makeup feel and everyday wear.

#### Animal Series

### Lamb Lower Lashes



#### Animal Series

### Little Wildcat Lower Lashes



# Animal series Lower Lashes

Cluster Lashes



Animal Series

## Fox Style Lower Lashes

---



Animal Series

## Rabbit Charm Lower Lashes

---



# Legendary Four Beauties Collection

## Cluster Lashes



### New Arrival:

Introducing our latest lower lashes, designed to enhance your beauty routine.

### Natural and Soft:

Crafted for a natural look with a soft, comfortable feel.

### Easy to Wear:

Effortless application for quick and convenient use.

### Enhanced Eye Makeup:

Accentuates and highlights your eye makeup for a striking effect.

### Chic and Refined:

Adds a touch of elegance and precision to your overall look.

### Eye-Enlarging Effect:

Naturally enlarges your eyes, making them appear bigger and more captivating.

---

## Legendary Legend Series Yuhuan Lower Lashes



## Legendary Four Beauties Collection Diaochan Lower Lashes



# Legendary Four Beauties Collection

Cluster Lashes



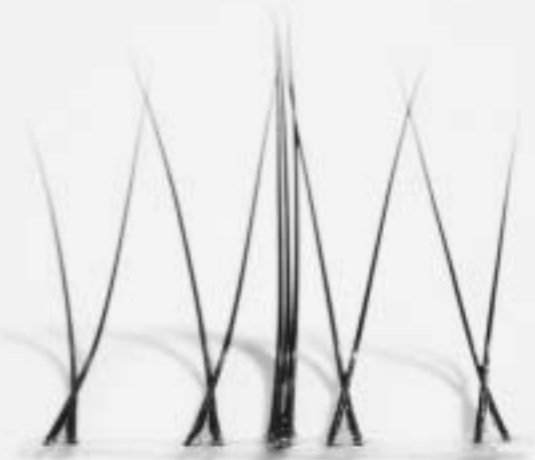
Legendary Four Beauties Collection  
**Zhao Jun Lower Lashes**

---



Legendary Four Beauties Collection  
**Xi Shi Lower Lashes**

---



# Lash Adhesion



Latex-free



Tear-free Formula



Formaldehyde Free



Quick Dry



Lab Approved



PAO 6M

## ✓ European Standard

• CPSR • TRA

## ✓ Lab Test

- Patch test
- Human eye stimulation

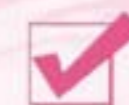
5g



1g



# # Double-ended Glue



Lashes into place for around 1 week



Faster drying time



**The 'bond':**

Applied to the base of your natural lashes

**The 'seal':**

Locks your lashes in place once individual clusters are applied.

## EASY 3 STEPS APPLICATION



# Must-have Tools

## 01 For Strip Lashes



**#166 Pro Lash Curler**

Deep curl  
Long lasting



## 02 For Cluster Lashes



**#168 Lash Curler**

Long lasting deep curl



# Factory Accreditation



Factory Accreditation :

BSCI / FAMA / GMPC / ISO22716 / ISO14001 / ISO9001 / SEDEX / GRS

# International Clients

*Boots*

*Walgreens*

**NEXT**

Superdrug<sup>★</sup>

PRIMARK<sup>®</sup>

**savers**  
HEALTH HOME BEAUTY

Marionnaud

ICI PARIS XL

ROSSMANN

**Kruidvat**

**trekpleister**

**Watsons**

*Sally Hansen*

REAL *by Sam & Nic*  
TECHNIQUES<sup>®</sup>

ecOTOOLS<sup>®</sup>

**CALA<sup>®</sup>**

**COTY**

NatureWell

ELEGANT  
TOUCH

**eylure**

salonsystem 

SKINNY DIP  
LONDON

**RIB**  
ROYAL BEAUTY

**PARSA**  
— BEAUTY —



**ST FUTURE**  
I N T E R N A T I O N A L

**THANK YOU!**

Together, we make the future brighter !

[www.st-future.com](http://www.st-future.com)



**St Future International Ltd**

Room 8, 9/F, Chevalier Commercial Centre,  
No.8 Wang Hoi Road, Kowloon Bay, Hong Kong  
Tel: +852 2318 0170

**Guangzhou Office**

4th Floor, 1823 Business Park, No. 29 Yuan Xia Tian 3rd Road,  
BaiYun District, Guangzhou, China  
Tel: +86 20 6661 6688

**UK Office**

34 Delisle Road, London SE28 0JE UK  
Tel: +44 20 8317 0588

**USA Office**

676 N Spring St, Los Angeles California 90012  
Tel: +1 949 299 6629