

Key Substances and Expected Effects

PLLA, a lactic acid polymer, promotes collagen formation in pores, and dead skin cells are naturally exfoliated as PLLA particles expand.

PLLA (Poly-L-Lactic Acid) Promoting collagen formation, Wrinkle management

- A lactic acid polymer
- Safe as it decomposes into water, carbon dioxide, etc. after functional expression

Vitamin C (Ethyl Ascorbyl Ether) Whitening

- Prevents aging by blocking free radical access.
- INCUBE® storage platform technology is applied to maintain the functional effects.

Glutathione Whitening

- Inhibits melanin formation through the antioxidant activity.
- INCUBE® storage platform technology is applied to maintain the functional effects.



PLLACUBE



PDRN (Sodium DNA) Cell regeneration

- A DNA polymer mixture extracted from the salmon sperm or testes.
- Safe and minimize side effects since it is similar to human-derived DNA.



Exosome (Houttuynia Cordata Extract) Skin Problem Management

- Contains plenty of bioactive substances and is effective in anti-inflammatory and antibacterial activities.



Sodium Hyaluronate Skin Moisturizing

- Helpful for skin regeneration by promoting fibroblasts

* The effects described above are limited to the characteristics of raw materials

Product Spec. and Directions for Use

Specification

PLLA + PDRN + Houttuynia Cordata Extract + Vitamin C + Glutathione + HA
100mg / vial (10vial / box)

How to Use

1. Before using the product, disinfect the entrance of the rubber stopper with a disinfectant pad.
2. Inject 4 ml of water for injection using a syringe.
3. Shake for 1 minute, remain stationary for 2 minutes, and the mix before use.



Treatment Instructions

- Can be used in combination with dermatological treatment equipment such as RF laser, ultrasound, MTS, RF needle, and LDM.

Treatment Frequency

- Three times at 1-2 week intervals are recommended, and steady re-treatment after 1-2 months will help maintain

Remarks

- It is recommended to use the product within maximum 3 days after hydration.
- The fine suspended particles in solution after hydration are PLLA particles

Internal use only

Made with INCUBE® Technology

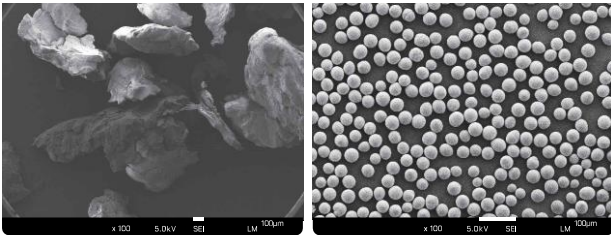
PLLACUBE PREMIUM COLLAGEN BOOSTER



Zip. 07997, #611, Hyundai 41 Tower,
293, Mokdong dong-ro, Yangcheon-gu, Seoul, Korea
T. +82 70. 5158. 4447
F. +82 2. 6971. 9764
E. sales@acmedikorea.com

Technical Features

PLLA Manufacturing Technology



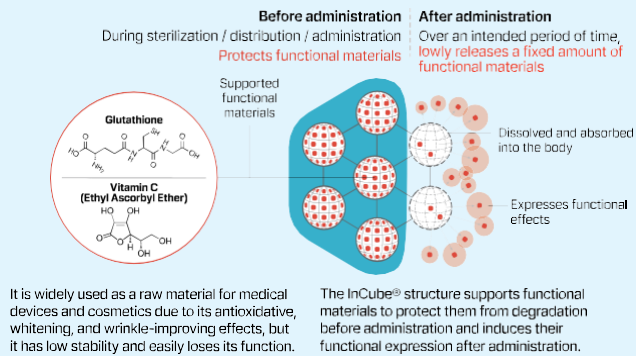
Conventional PLLA

PLLACUBE PLLA

- The PLLA particle is formed into a spherical shape, reducing the nodules and inflammatory response.
- The PLLA particle size is uniformized within the range of 30 to 50 µm.

INCUBE® Storage Platform Technology

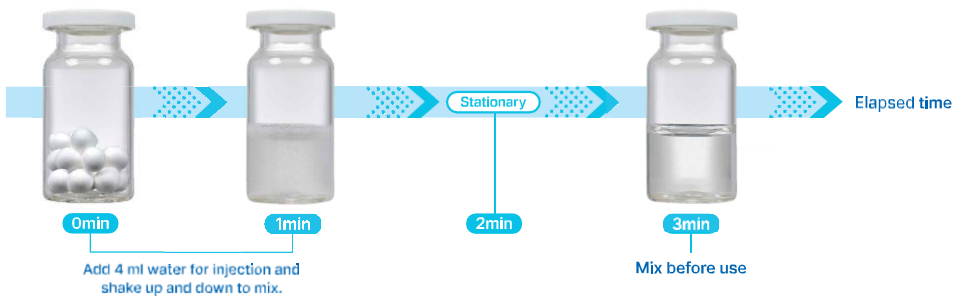
It protect functional materials during the manufacturing and distribution process and exhibits long lasting results when used.



✧ Patent No. KR102488551B1

Instant Hydration Technology

Instant hydration within 1 minute



Before & After

Before — Woman in her 50s — After



Pigmentation and Elasticity Improvement

Skin Type : Freckle
acne hyperpigmentation

Before — Woman in her 40s — After



Whitening and Redness Improvement

Skin Type : Redness, large pores,
severely uneven skin texture

Before — Woman in her 30s — After



Fine Wrinkles and Pigmentation Improvement

Skin Type : Deep wrinkles, a lot of
pigmentation (syngoma, freckles)

Before — Man in his 30s — After



Acne Reduction and Scar Improvement

Skin Type : Adult acne, redness