

Catalogue

2023

Private and confidential. This document in parts or whole, cannot be disclosed nor transmitted to other parties without the written consent of ZKDigimax Pte Ltd ©2023 ZK Digimax. All rights reserved

Contents

06

Transparent LED

15

Outdoor-LED

27

Digital Signage

36

Electronic
Price Tag

42

DG03-A1D24

48

Electronic
Price Tag (Gray)

09

Photoelectronic
LED

21

Indoor-LED

33

LCD Shelf Display

39

Bluetooth Gateway
Central Controller

45

DG03-A1F43

51

Poster Cabinet

About Us



“ZKDigimax is a leading platform service company that provides end-to-end solutions and services for commercial activities, content management, and advertising. Designed to empower retailers and businesses to achieve their growth potential.”



Global Services

Since its establishment, ZK Digimax has flourished and established subsidiaries in many Countries such as :



Singapore



Colombia



Mexico



Panama



Spain



Portugal
(Iberia)



Portugal
(Iberia)



Peru



United Arab
Emirates



Kenya



Saudi Arabia
(KSA)



Egypt



Indonesia



Thailand



South Korea



Vietnam



China



Chile



Philippines



South Africa

Product

AI-Powered

*A visually engaging way to display content,
Allows dynamic content personalization,
Improving efficiency & customer satisfaction,
Know your clients better.*





Transparent LED

DG01-A5P39 | DG01-A5P29

LED transparent screens have the characteristics of extreme transparency, simplicity, advanced concept, and novelty. They are widely used in transparent scenes such as glass display windows, glass curtain walls, and commercial space displays. To achieve good results in brand promotion, product display, and attracting attention for customers.

Key Feature



With a permeability rate of over 60%



The visual angle can reach 140 °



Convenient installation



Lightweight

Application



Building curtain wall



Cosmetics Store



Clothing Store



Optical Store

Specifications

Model		
Module Composition	LED Tube	3 in 1 Surface Sticker
	LED Packaging	Quad Core ARM-A17 1.8GHZ
	Pixel Spacing (mm)	3.9 Horizontally And 7.8 Vertically
	Pixel Sesolution	(W * H) 128*16
	Module Size (mm)	(W * H * D) 500*125*5
Cabinet Composition	Composition of Box Unit Board	2*8
	Box Resolution	256*128/256*64/128*128/128*64
	Box Size (mm)	(W * H) 1000*1000/1000*500/500*1000/500*500
	Box Area (m2) 1	1
	Box Weight (Kg/piece)	8.5
	Box Flatness (mm)	0.2
	Pixel Density (Dots/m ²)	32768
	Max. Power Consumption of The Box	800w
Optoelectronic Parameters	White Balance Brightness cd/m ²	≤4500
	Horizontal View Angle	140±10°
	Vertical Viewing Angle	140±10°
	Best Sight Distance (m)	≥4
	Permeability	60%
	Luminance Uniformity	≥97%
	Peak Power Consumption (W/m ²)	800
	Average Power Consumption (W/m ²)	245
Processing Performance	Power Supply Requirements	AC200-240V (47-63HZ)
	Refresh Rate (HZ)	≥1920
	Frame Switching Frequency (HZ)	60
	Gray Scale	16 Bit
Using Parameters	Driving Method Constant Current Drive	1/8 Sweep
	Typical Value Of Service Life (Hrs)	100000
	Working Temperature Range (°C)	-10~+40
	Storage Temperature Range (°C)	-20~+60
	Operating Humidity Range (RH)	10% -65% Without Condensation



Photoelectric LED

Image has noise reduction, anti-mildew, anti-lightning, and fire-retardant.

Specifications

P10~P40 LED photoelectric glass screen technical parameter table					
No.	Project	Optical property parameter			
1	Luminous chip brightness (Red light)	500mcd			
2	Luminous chip brightness (Green light)	800mcd			
3	Luminous chip brightness (Blue light)	180mcd			
No.	Project	Electrical performance parameters			
1	Working voltage	DC5V			
2	Luminous chip brightness (Red light)	20mA			
3	Standard current	160A/m ²	120A/m ²	80A/m ²	60A/m ²
4	Floor drain current	≤2mA	≤2mA	≤2mA	≤2mA
5	Average power	280W/m ²	200W/m ²	140W/m ²	100W/m ²
6	Peak power	800W/m ²	600W/m ²	400W/m ²	300W/m ²
7	Switching power supply	Ac input range 110-240VAC, output 5V			
		Built in active PFC(power factor correction) function			
		Efficiency reaches 91%			
8	Power supply standard	≤2mA			
		380VAC±10%,50Hz			
9	Distribution cabinet	Switch and contactor use Schneider, Siemens and Chinese brands			
No.	Project	Physical property parameter			
1	LED substrate thickness	2mm			
2	Thickness of upper cover plate (glass)	6mm			
3	Thickness of lower cover plate (glass)	6mm			
4	Overall thickness of screen	6+2+6mm tempered glass whiteboard			
5	Cell size	Support customization			
6	Module size	Support customization			
7	Permeability	90%			
8	Display Weight	≤35kg/m ²			
9	Connector	Copper material			
10	Electric wire	National standard multi-core wire, through certification			
11	PCB board	International A material			
12	Protection grade	Better than IP45			
13	Flatness	Joint between modules <0.1mm			

Specifications

P10~P40 LED photoelectric glass screen technical parameter table					
No.	Project	Photoelectric performance parameter			
1	Product model	P10	P20	P30	P40
2	Pixel pitch	10*10mm	20*20mm	31.25*31.25mm	40*40mm
3	Pixel density	10000 points /m ²	2500 points /m ²	1024 points /m ²	625 points /m ²
4	Pixel composition	A pure red tube, a pure green tube and a pure blue tube			
5	Luminous/pixel components	SMD2020 (R, G, B IC) 4-in-1 package			
6	6 Driver IC	Breakpoint continuation (Any single light broken does not affect the rear pixel. Current software adjustment to a single lamp as a unit of arbitrary tailoring)			
7	Bead failure rate	Less than one in ten thousand and distributed discretely			
8	Brilliance control	Automatic or manual adjustment based on the ambient brightness. The value is greater than or equal to 256 levels			
9	Gray level	Grade 8192			
10	Display color	68.71 billion colors			
11	Best viewing	Horizontal 140, vertical 140			
12	Best viewing distance	> 10 m	> 20 m	> 30 m	> 40 m
13	Brightness	White balance brightness 5000cd/m ²	White balance brightness 4000cd/m ²	White balance brightness 2000cd/m ²	White balance brightness 1500cd/m ²
14	Control Method	Through the computer network cable connection control. The screen is displayed in sync with the video front-end processor			
15	Control system	Synchronous/asynchronous			
16	Display port	DVI and HDMI signal connection			
17	Software interface	Windows operating system; Standard computer network interface 18 Continuous			
18	Continuous operation	≥72 Hours			
19	Mean time between failures	≥9000 Hours			
20	Average lifetime	100,000 Hours			
21	Colour temperature	5500K-9300K			
22	Image adjustment	White balance, contrast, visual, tone adjustment			
23	Image processing	Image has noise reduction, enhancement, motion compensation, color coordinate transformation processing			
24	Drive mode	Constant current driving			
25	Scanning mode	Static			
26	Signal processing capability	More than 16bit			

Specifications

P10~P40 LED photoelectric glass screen technical parameter table		
No.	Project	Photoelectric performance parameter
27	Uniformity of luminance	The pixel brightness is greater than 0.95 when the whole screen is at its brightest in monochrome
28	Attenuation rate	28 Attenuation rate T
29	Refresh rate	≥3840HZ
30	Repetition frequency	≥60HZ
31	Video input	Compatible with PAL\NTSC TV signal, compatible with HDTV and SDTV
32	Software interface	WINDOWS、 NT、 XP、 2000
33	Operational environment	Work environment: -10~+45 °C/10~90 %RH Storage environment: -40~+85 °C/10~90 %RH
34	Protective performance	IP65 waterproof grade, moisture-proof, anti-corrosion, anti-mildew, anti-lightning, anti-typhoon, anti-earthquake and fire-retardant
35	Input signal	Remote control and remote message playback
36		Computer video: Digital Video Signal (DVI) X1
37		AVI, WMV, MPG, MP4, FLV, 3GP
38		Audio: WAV/MID, CD-ROM, other video sound signal input
39	Control distance	Network cable < 100m. Optical fiber > 20km

Remarks:

1. In order to ensure safety and meet the requirements of building safety standards, all glass must be tempered and use pvb film. Clamping method for dry clamping;
2. In order to ensure the display effect and the overall architectural aesthetic integration, the LED luminous body must be between two pieces of glass;
3. In order to achieve the characteristics of photoelectric glass and energy saving requirements, it is recommended not to show during the day, which can reflect the permeability of the glass;
4. In order to meet the requirements of curtain wall use, the waterproof grade must be above IP65;
5. In order to ensure the beautiful and clean appearance of the building, dimension segmentation can be satisfied as far as possible according to the requirements of the curtain wall.
6. In order to meet the curtain wall requirements, it is recommended that the glass specification be 6+3.04pvb+6mm; Hollow glass can be configured according to energy saving requirements.

Application



Glazed Garden



Beauty Clinic



Public space



Office



Enabling **seamless** implementation for
global **expansion**



LED-Outdoor

Full-Color LED Display

DG01-A2P25 | DG01-A2P40 | DG01-A2P60 | DG01-A2P80



LED-Outdoor

Full-Color LED Display

DG01-A2P25 DG01-A2P40
 DG01-A0P60 DG01-A0P80

Key Feature



Displays position prompt of signal cable connection, convenient for quick connection of display unit and troubleshooting



Dual-program backup enables the backup program of receiving cards for upgrade and restoration when exception occurs during program upgrading



Acquires network statuses of receiving cards to help handle network communication problems



Loads parameters from the screen



Network loop backup improves product stability



Low gray scale multiplication technology ensures more exquisite images

Application



Appartement Building



Office Building



Videotron



Museum

Specifications

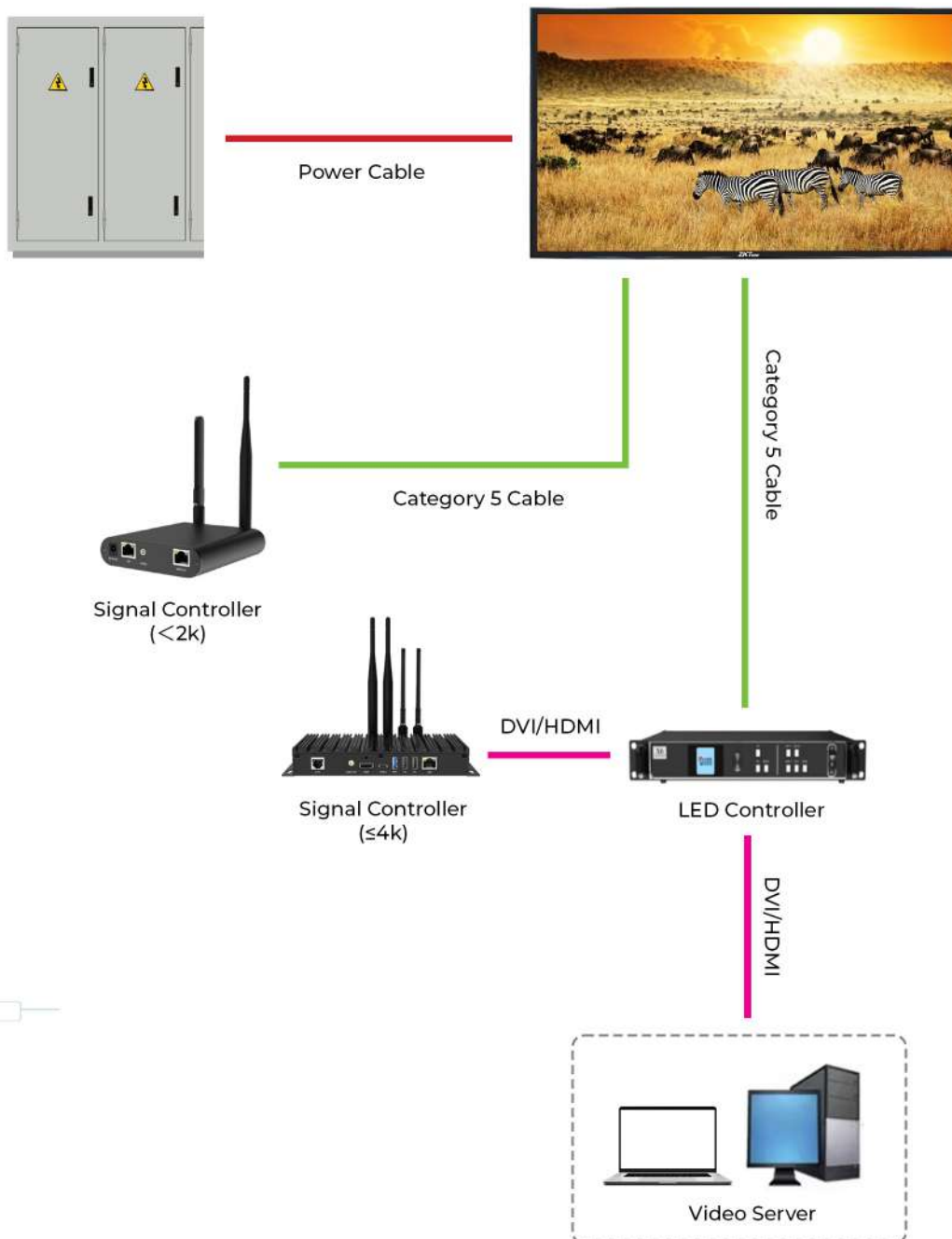
Model	DG01-A2P25	DG01-A2P40	DG01-A2P60	DG01-A2P80
Cabinet Parameters				
Modules Component	3*6	3*6	5*5	3*6
Dimensions (W×H×D)	960*960*100mm	960*960*100mm	960*960*100mm	960*960*100mm
Resolution	384*384	240*240	160*160	120*120
Area	0.9216°C	0.9216°C	0.9216°C	0.9216°C
Weight	18KG	18KG	18KG	18KG
Lamp Board Housing	no housing	no housing	no housing	no housing
Cabinet Material	Die-cast aluminum	Die-cast aluminum	Die-cast aluminum	Die-cast aluminum
Maintenance Method	Front maintenance for all components	Front maintenance for all components	Front maintenance for all components	Front maintenance for all components
Cabinet Flatness	0.1mm	0.1mm	0.1mm	0.1mm
Protection Level	Front protection level IP65	Front protection level IP65	Front protection level IP65	Front protection level IP65
Physical parameters				
Pixel pitch	2.5mm	4.0mm	6.0mm	8.0mm
Module size	L320 * H160 * T17.2mm	L320 * H160 * T17.2mm	L192 * H192 * T16.1mm	L320 * H160 * T17.2mm
Module resolution	128*64dots	80*40dots	32*32dots	40*20dots
Module weight	380±10g	410±10g	330±10g	420±10g
LED encapsulation	1415SMD	1921SMD	3535SMD	3535SMD
Pixel configuration	1,1,1R/G/B	1,1,1R/G/B	1,1,1R/G/B	1,1,1R/G/B
Pixels density	160000Dot/m ²	62500Dot/m ²	27777Dot/m ²	15625Dot/m ²
Scan mode	1/16 scan	1/10 scan	1/8 scan	1/8 scan
Port type	HUB75	HUB75	HUB75	HUB75
Optical parameters				
Equilibrium brightness	≥5000cd/m ²	≥5000cd/m ²	≥5000cd/m ²	≥5000cd/m ²
Colour temperature	≥10000K	≥10000K	≥10000K	≥10000K
Best viewing angle	120°(W) 120°(H)Deg.	120°(W) 120°(H)Deg.	120°(W) 120°(H)Deg.	120°(W) 120°(H)Deg.
Module consumption	≤30W	≤40W	≤25W	≤30W
Processing capacity				
Driving mode	Constant drive	Constant drive	Constant drive	Constant drive
Frame frequency	≥60Hz	≥60Hz	≥60Hz	≥60Hz
Refresh frequency	≥1920Hz	≥1920Hz	≥1920Hz	≥1920Hz
Gray scale/color	≥16.7M color	≥16.7M color	≥16.7M color	≥16.7M color
Using parameters				
Mean free error time	>5000Hours	>5000Hours	>5000Hours	>5000Hours
Life	100000Hours	100000Hours	100000Hours	100000Hours
Working environment temperature	-10~60°C	-10~60°C	-10~60°C	-10~60°C
Working environment humidity	10%~70%RH	10%~70%RH	10%~70%RH	10%~70%RH
Lamp failure frequency	<0.0001	<0.0001	<0.0001	<0.0001

Available Model

DGLED-Outdoor

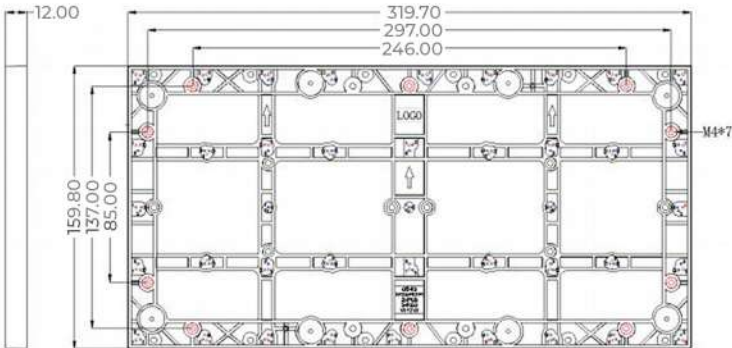
Typical Application

Notes:  Power Cable
 Category 5 Cable
 DVI/HDMI

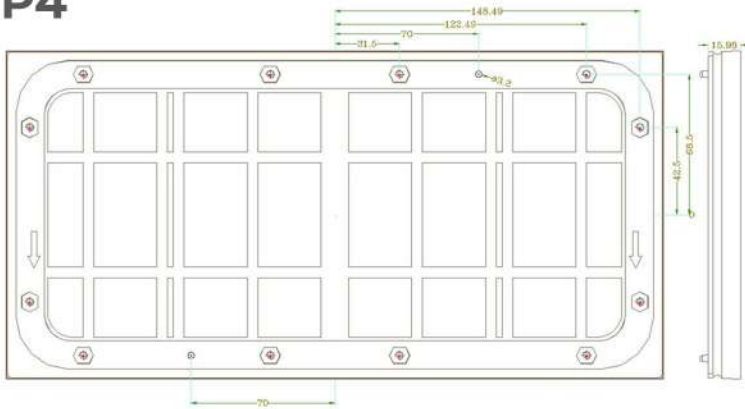


Dimensions

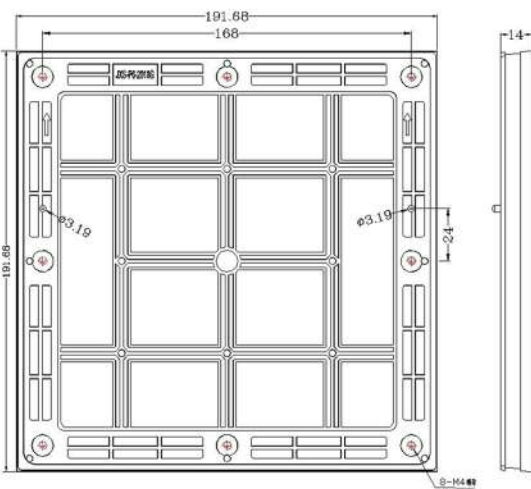
P2.5



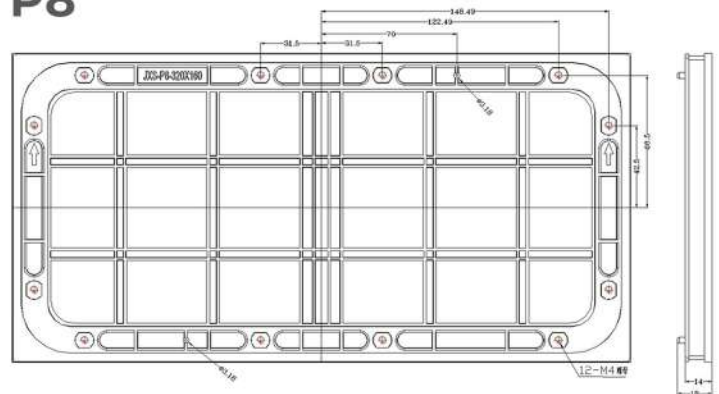
P4

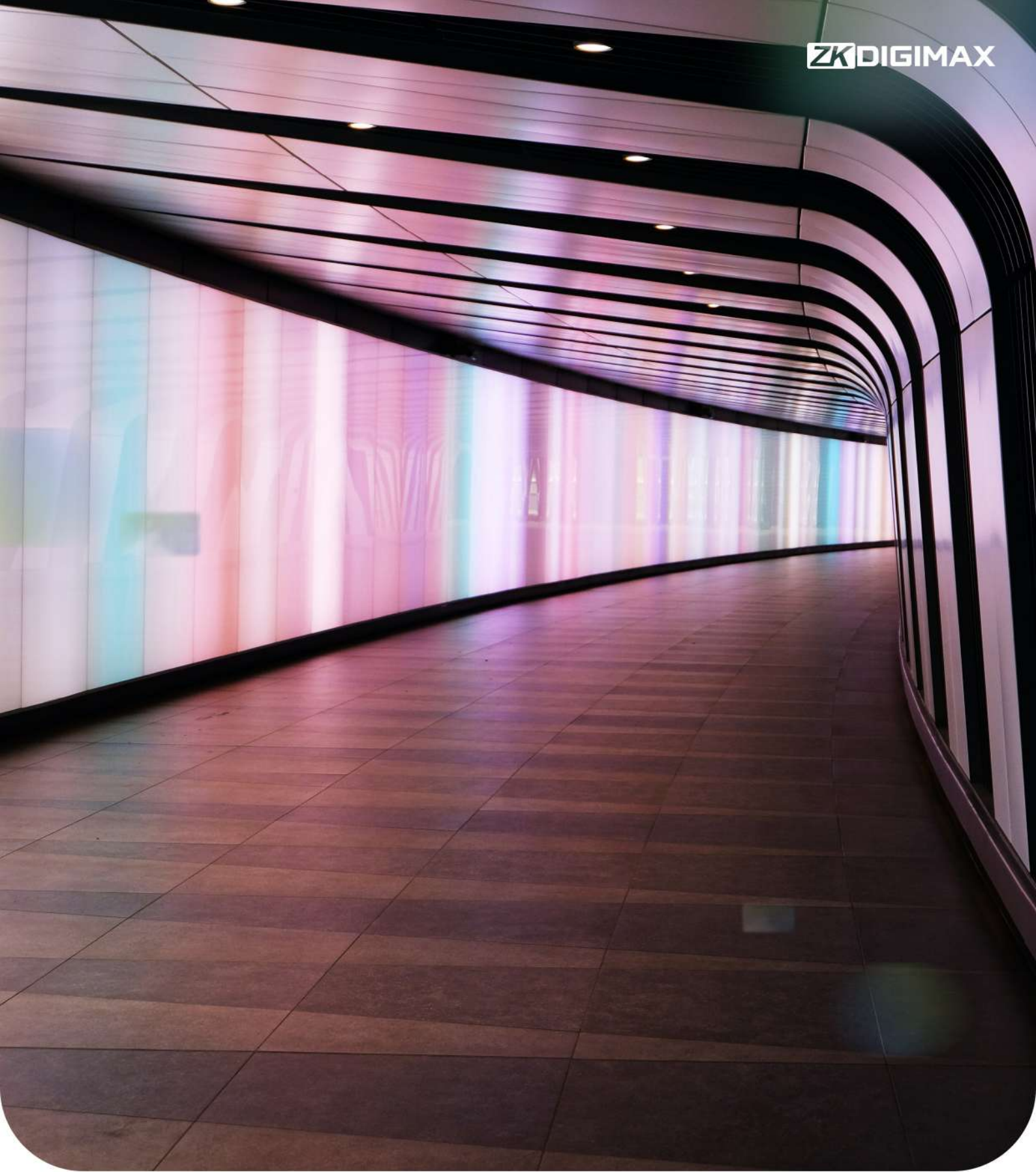


P6



P8





LED-Indoor

Full-Color LED Display

DG01-A0P15 | DG01-A0P18 | DG01-A0P25



LED-Indoor

Full-Color LED Display

DG01-A0P15 DG01-A0P18 DG01-A0P25

Key Feature



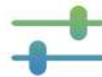
Displays position prompt of signal cable connection, convenient for quick connection of display unit and troubleshooting.



Dual-program backup enables the backup program of receiving cards for upgrade and restoration when exception occurs during program upgrading.



Acquires network statuses of receiving cards to help handle network communication.



Loads parameters from the screen.



Network loop backup improves product stability.



Low gray scale multiplication technology ensures more exquisite images.

Application



Mall



Office



Entertainment



Stadium

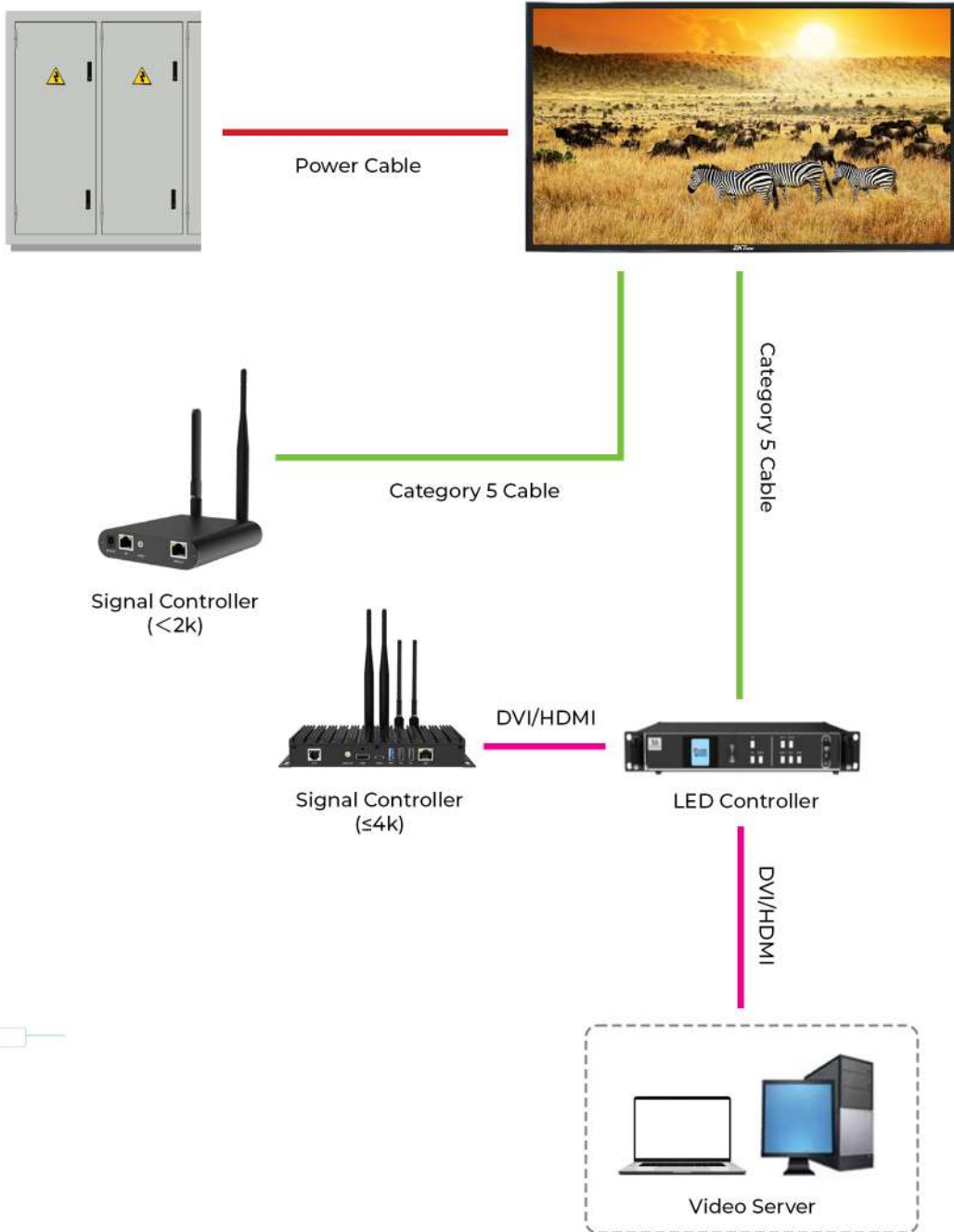
Specifications

Model	DG01-A0P15	DG01-A0P18	DG01-A0P25
Cabinet Parameters			
Modules Component	3*2	3*2	3*2
Dimensions (W*H*D)	640*480*65mm	640*480*65mm	640*480*65mm
Resolution	426*313	344*258	256*128
Area	0.3072m ²	0.3072m ²	0.3072m ²
Weight	8.6KG	8.6KG	8.6KG
Lamp Board Housing	no housing	no housing	no housing
Cabinet Material	Die-cast aluminum	Die-cast aluminum	Die-cast aluminum
Maintenance Method	Front maintenance for all components	Front maintenance for all components	Front maintenance for all components
Cabinet Flatness	0.1mm	0.1mm	0.1mm
Protection Level	Front protection level IP5X	Front protection level IP5X	Front protection level IP5X
Module Parameters			
Pixel Pitch	1.5mm	1.8mm	2.5mm
Pixel Density	422500 Dots/sq.m	288906 Dots/sq.m	160000 Dots/sq.m
Pixel Configuration	1R1G1B	1R1G1B	1R1G1B
Module Weight	380±10g	410±10g	330±10g
LED Encapsulation	CEC (China Electronics) Encapsulation, with Chip-on-Board (COB) technology	SMD1515	SMD2121
Size	1,1,1R/G/B	1,1,1R/G/B	1,1,1R/G/B
Pixels Density	320*160*14.7mm	320*160*14.7mm	320*160*14.7mm
Weight	0.43kg±0.01kg	0.43kg±0.01kg	0.43kg±0.01kg
Structural Features	Integrated Lamp and Driver	Soft Connection	Soft Connection
Module Resolution	209*104=21736 Dots	172*86=14792 Dots	128*64=8192 Dots
Input Voltage (DC)	4.2~4.5V	4.2~4.5V	4.2~4.5V
Maximum Current	≤4.5A	≤4.5A	≤4.5A
Signal Input Interface Type	HUB75 (two sets of data)	HUB75 (two sets of data)	HUB75 (two sets of data)
Cascade	Not Available for Cascade	Not Available for Cascade	Not Available for Cascade
Module Power	≤40	≤20.25W	≤18W
Driving Mode	Constant drive	Constant Current Driving	Constant Current Driving
Brightness	≥800cd/m ²	≥800cd/m ²	≥800cd/m ²
Brightness Uniformity	>0.95	>0.95	>0.95
Horizontal Viewing Angle	160±10 degrees	160±10 degrees	160±10 degrees
Vertical Viewing Angle	120±10 degrees	140±10 degrees	140±10 degrees
Best Viewing Distance	≥1.53m	≥5.5m	≥7.5m
Usage Environment	Indoor	Indoor	Indoor
Service Life	≥10,0000 hours	≥10,0000 hours	≥10,0000 hours
Mean Time Between Failures (MTBF)	≥5000 hours	≥5000 hours	≥5000 hours
Attenuation Rate (after 3 years of operation)	≤10%	≤10%	≤10%
Continuous Out-of-Control Points	0	0	0
Discrete Out-of-Control Points	<30PPM, 0 at the time of factory shipment	<30PPM, 0 at the time of factory shipment	<30PPM, 0 at the time of factory shipment
Dead Pixel Rate	<50PPM, 0 at the time of factory shipment	<50PPM, 0 at the time of factory shipment	<50PPM, 0 at the time of factory shipment
Operating Temperature Range	-20°C~40°C	-20°C~40°C	-20°C~40°C
Operating Humidity Range	10%-65%RH (non-condensing)	10%-66%RH (non-condensing)	10%-67%RH (non-condensing)
Module Flatness	<0.2mm	<0.2mm	<0.2mm

Available Model
DGLLED-Indoor

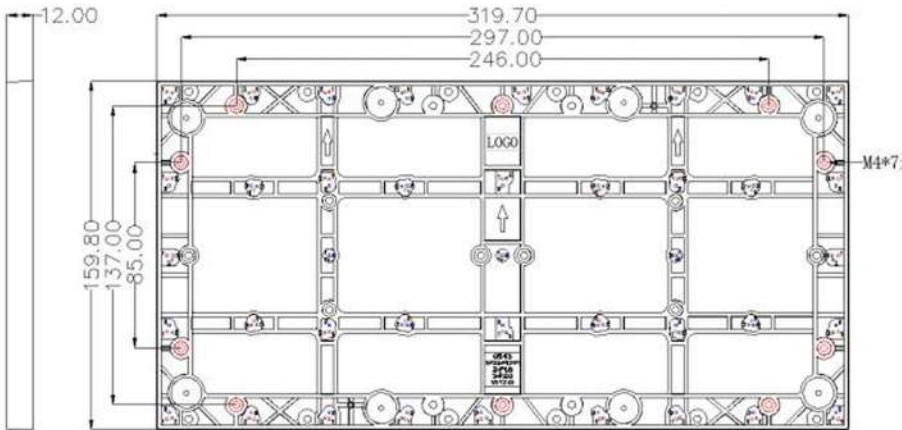
Typical Application

- Notes:
-  Power Cable
 -  Category 5 Cable
 -  DVI/HDMI

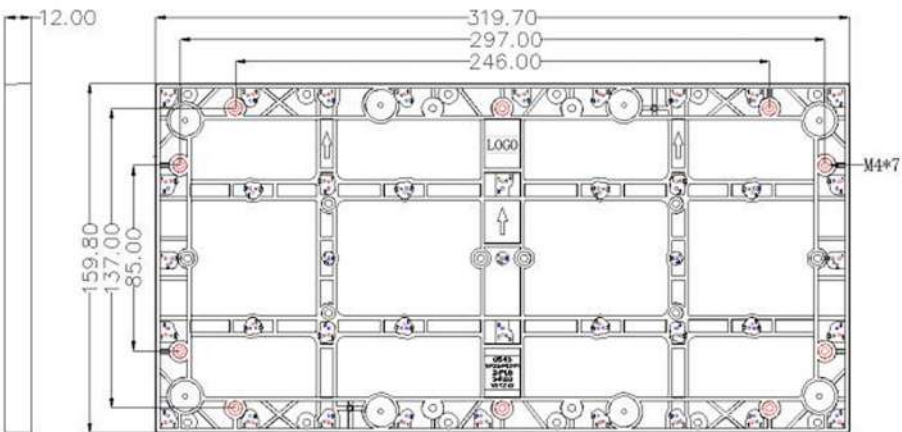


Dimensions

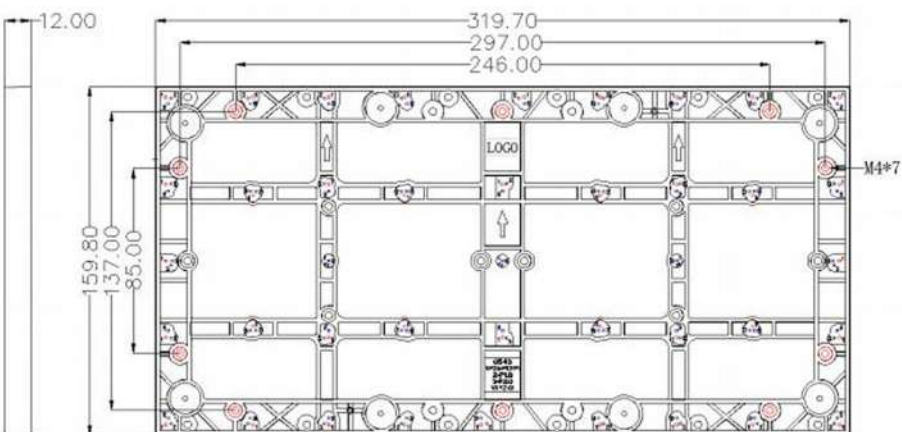
P1.5



P1.8



P2.5





Digital Signage

DG03-AIW32 | DG03-AIW43 | DG03-AIW50 | DG03-AIW55

Key Feature



ADS PID Panel

178 large viewing angle and fast response, high color revivication degree, no ripple distortion under pressure.



High Brightness Anti-glare Display

High brightness anti glare display brightness and 25% haze surface treatment, improve content visibility in any indoor lighting.



4k Resolution

4 times higher than FHD, deliver content more realistic.



Reliable Long Lifespan Design

Reliable long lifespan display operation and 50.000hrs lifetime, convey business messages impactfully all the time.



Narrow Even Bezel Design

Increase screen immersive display experience.



Landscape & Potrait Installation

Design with vesa-mount hole, offer more product instalation methods and content display possibilities.



Clean-cable Chain Design

Easy to install and maintain.



Builtin-in VDW Mode

Support up to 5x5 video wall matrix.



BOE Cast

Built-in Wi-Fi, easy to distribute content wirelessly.



Security Lock

Remote controller and key button can be locked, avoid operating by unauthorized person.



Engineering Setting

Support deafult power-on and USB cloning settings.



OTA (Over The Air) Upgrade

Built-in Wi-Fi, easy to upgrade firmware.

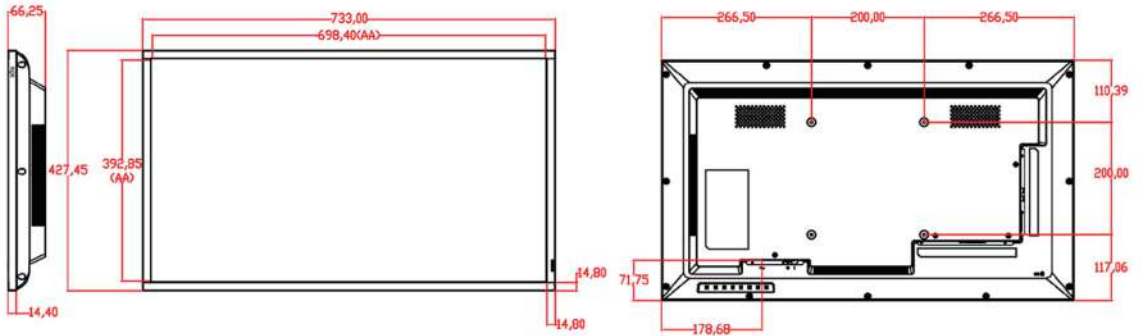
Specifications

Model Name	DG03-A1W32	DG03-A1W43	DG03-A1W50	DG03-A1W55
Display				
LCD Type	ADS	ADS	VA	ADS
Resolution	1920x1080	3840x2160	3840x2160	3840x2161
Aspect Ratio	16:9	16:9	16:9	16:9
Brightness	500nits (Typ.)	500nits (Typ.)	500nits (Typ.)	500nits (Typ.)
Backlight	D-LED	D-LED	D-LED	D-LED
Static Contrast	1200:1 (Typ.)	1200:1 (Typ.)	500:1 (Typ.)	1200:1 (Typ.)
Reponse Time (G to G)	8ms (Typ.)	8ms (Typ.)	8ms (Typ.)	8ms (Typ.)
View Angle (H/V,CR>10)	178°/178°	178°/178°	178°/178°	178°/178°

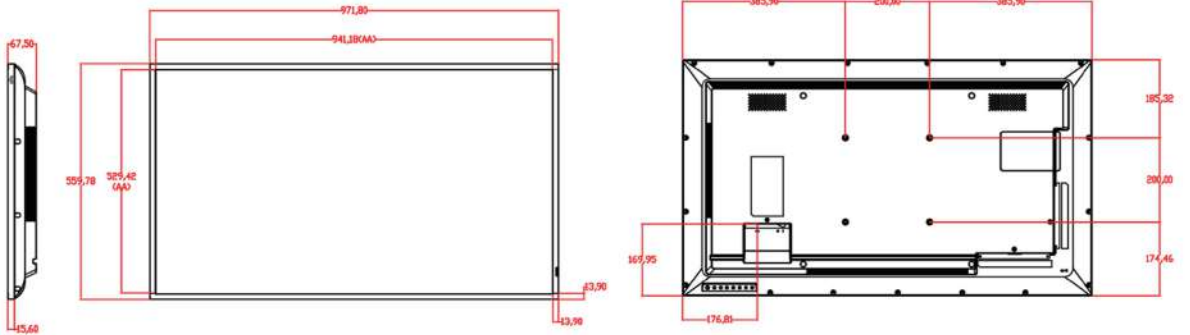
Model Name	DG03-A1W32	DG03-A1W43	DG03-A1W50	DG03-A1W55
Display				
Colour Depth	16.7M (8bit)	1,07G (8bit+FRC)	1,07G (8bit+FRC)	1,07G (8bit+FRC)
Colour Gamut	CIE1931 NTSC72% (Typ)	CIE1931 NTSC72% (Typ)	CIE1931 NTSC72% (Typ)	CIE1931 NTSC72% (Typ)
Surface Treatment	Haze 25%, 3H	Haze 25%, 3H	Haze 1%, 3H	Haze 25%, 3H
Installation Orientation	Landscape & Potrait	Landscape & Potrait	Landscape & Potrait	Landscape & Potrait
Operation Hours (Hours/Day)	24/7	24/7	24/7	24/7
Life Time (BLU)	50.000Hrs	50.000Hrs	50.000Hrs	50.000Hrs
MTBF	30.000Hrs (Min.)	30.000Hrs (Min.)	30.000Hrs (Min.)	30.000Hrs (Min.)
SoC				
CPU	ARM Quad Core Cortex-A53, up to 1.5Hz	ARM Quad Core Cortex-A53, up to 1.5Hz	ARM Quad Core Cortex-A53, up to 1.5Hz	ARM Quad Core Cortex-A53, up to 1.5Hz
GPU	ARM Mali-G52 2EE MCI	ARM Mali-G52 2EE MCI	ARM Mali-G52 2EE MCI	ARM Mali-G52 2EE MCI
Memory	2GB (DDR3)	2GB (DDR3)	2GB (DDR3)	2GB (DDR3)
Storage	16GB (EMMC)	16GB (EMMC)	16GB (EMMC)	16GB (EMMC)
O/S	Android 9.0 (AOSP)	Android 9.0 (AOSP)	Android 9.0 (AOSP)	Android 9.0 (AOSP)
Connectivity				
HDMI IN	x2 (HDMI1.0, HDCP 2.2/1.4)	x2 (HDMI1.0, HDCP 2.2/1.4)	x2 (HDMI1.0, HDCP 2.2/1.4)	x2 (HDMI1.0, HDCP 2.2/1.4)
AV IN	x1 (3IN1)	x1 (3IN1)	x1 (3IN1)	x1 (3IN1)
Audio In	x1 (Common used with AV IN)	x1 (Common used with AV IN)	x1 (Common used with AV IN)	x1 (Common used with AV IN)
Audio Out	x1 (3.5mm Stereo jack)	x1 (3.5mm Stereo jack)	x1 (3.5mm Stereo jack)	x1 (3.5mm Stereo jack)
RS232 IN	x1 (DSUB9)	x1 (DSUB9)	x1 (DSUB9)	x1 (DSUB9)
USB	x2 (USB 2.0 Type A)	x2 (USB 2.0 Type A)	x2 (USB 2.0 Type A)	x2 (USB 2.0 Type A)
Memory Card Slot	x1 (Micro SD)	x1 (Micro SD)	x1 (Micro SD)	x1 (Micro SD)
LAN	x1 (RJ45)	x1 (RJ45)	x1 (RJ45)	x1 (RJ45)
WiFi/Bluetooth	Yes (2.4GHz, 802.11 b/g/n) / Yes (BT4.2)	Yes (2.4GHz, 802.11 b/g/n) / Yes (BT4.2)	Yes (2.4GHz, 802.11 b/g/n) / Yes (BT4.2)	Yes (2.4GHz, 802.11 b/g/n) / Yes (BT4.2)
Sound				
Built-in Speaker	10W x 2 (6Ω)	10W x 2 (6Ω)	10W x 2 (6Ω)	10W x 2 (6Ω)
Power				
Power Supply	AC 100~240V @50/50Hz	AC 100~240V @50/50Hz	AC 100~240V @50/50Hz	AC 100~240V @50/50Hz
Power Consumption	≤95W	≤170W	≤230W	≤250W
Power Consumption (Standby)	<0.5W	<0.5W	<0.5W	<0.5W
Mechanical				
Colour/Material	Frame: Black/Aluminium Backcover: Black/SGCC	Frame: Black/Aluminium Backcover: Black/SGCC	Frame: Black/Aluminium Backcover: Black/SGCC	Frame: Black/Aluminium Backcover: Black/SGCC
Bezel Width	14.8mm (L/R/T/B)	13.9 (L/R/T/B)	14.9mm (L/R/T/B)	13.9mm (L/R/T/B)
Set Outline Dimension (WxHxD)	733.5x428.6x66.3mm	971.8x559.8x67.5mm	1127.7x648.2x72.6mm	1240.6x711.2x69mm
Set Weight	5.2±0.5KG	9.0±0.5KG	13.6±0.5KG	14.5±0.5KG
Carton Outline Dimension (WxHxD)	823x545x132mm	1070x690x139mm	1245x148x1790mm	1370x850x156mm
Packed Weight	823x545x132mm	1070x690x139mm	1245x148x1790mm	1370x850x156mm
Environment				
Operation Temperature	0°C~40°C	0°C~40°C	0°C~40°C	0°C~40°C
Operation Humidity	20%~80% RH	20%~80% RH	20%~80% RH	20%~80% RH
Storage Temperature	-10°C~60°C	-10°C~60°C	-10°C~60°C	-10°C~60°C
Storage Humidity	20%~80% RH	20%~80% RH	20%~80% RH	20%~80% RH

Dimensions

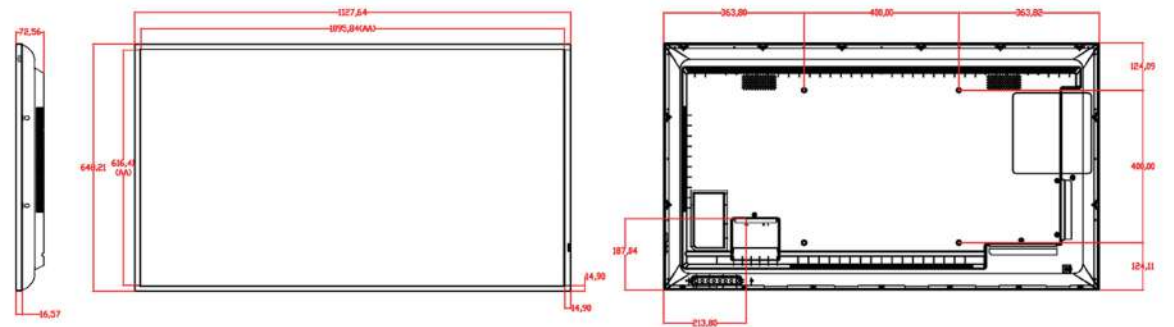
32 inch



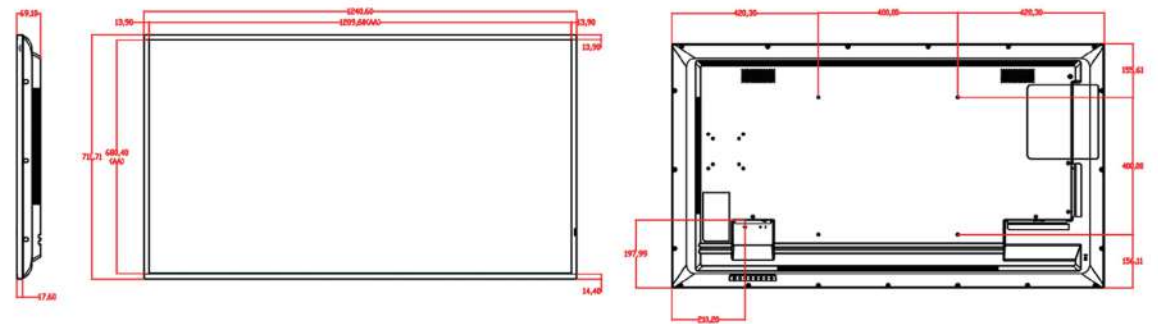
43 inch



50 inch



55 inch



Connectivity



Right side



Down side

Application



Office



Hospital

We provide **detailed data** and summarized it for you.
Our technology helps you get the job done.





LCD Shelf Signage

Ultra-wide LCD screen

LCD Shelf Display

LCD shelf display is a commercial display products with an ultra-wide LCD screen. In order to install on different sizes of shelf, it has various sizes of displays. It can be widely used to show the advertisements at retail industry, which aims to help shops improve the experience of shopping and shops turnover.

Key Feature



ADSDS Panel Technology



300 nits High Brightness



Fine-tune Uniformity



Slim Design with Narrow Bezel



Full Metal Shell

Applications



Supermarket



Cosmetic Store



Clothing Store



Optical Store

Specifications

Display				
Model	DG02-A1W23	DG02-A1W24	DG02-A1W28	DG02-A1W37
LCD Tech.	a-Si TFT-LCD	a-Si TFT-LCD	a-Si TFT-LCD	a-Si TFT-LCD
Screen Size	23.1inch	24inch	28inch	37inch
Resolution	1920*158	1920*360	1920*360	1920*540
Brightness	500cd/m ²	300cd/m ²	500cd/m ²	500cd/m ²
BLU	LED side entry	LED side entry	LED side entry	LED side entry
Contrast Ratio	3000:1	1200:1	1200:1	1000:1
Viewing Angle(H/V)	178°/178°	178°/178°	178°/178°	178°/178°
Backlight Life	30000h	30000h	30000h	30000h
CPU				
CPU	T972	A40	A40	T975
OS	Android 9.0	Android 9.0	Android 9.0	Android 9.0
Memory				
RAM	Android 9.0	Android 9.0	Android 9.0	Android 9.0
ROM	8GB(32G/64G Optional)	8GB(32G/64G Optional)	8GB(32G/64G Optional)	8GB(32G/64G Optional)
Internal Player				
I/O Interface	USB*2,DC*1,TF*1,HDMI*1	USB*2,DC*1,TF*1,HDMI*1	USB*2,DC*1,TF*1,HDMI*1	USB*2,DC*1,TF*1,HDMI*1
Power				
Power supply	DC 12V/3A	DC 12V/5A	DC 12V/5A	AC100~250V
Power consumption	20W	28W	35W	40W
Environment				
Operation temperature	0 ~ 50 °C	0 ~ 50 °C	0 ~ 50 °C	0 ~ 50 °C
Operation humidity	≤80%RH	≤80%RH	≤80%RH	≤80%RH
Physical				
Body Dimension	602*65*30mm	616.1*138*54mm	732*165*49.8	920*282*45.8mm
Set Weight	1.8kg	3.0kg	3.2kg	7.0kg



Electronic Price Tag

DG04-A1N21
DG04-A1N26

DG04-A1F21
DG04-A1F42

DG04-A1P21
DG04-A1N42

Key Feature



7.8mm ultra-thin body



8-year lifespan



7-color LED light



Multi-channel management



Bluetooth® 5.0 technology



2.5D protection lens



Multi-color E-ink screen



DIY templates

Application



Supermarket



Cosmetics Store



Clothing Store



Optical Store

Specifications

Model	DG04-A1N21	DG04-A1F21	DG04-A1P21	DG04-A1N26	DG04-A1F42	DG04-A1N42
Picture						
Dimensions External	68*35*14 mm	73*36*14 mm	72*39*15 mm	87*43*13 mm	99*94*14 mm	105*94*14 mm
Active Screen Area	49*24 mm	49*24 mm	49*24 mm	60*31 mm	85*64 mm	85*64 mm
Screen Size	2.13 inches	2.13 inches	2.13 inches	2.66 inches	4.2 inches	4.2 inches
Resolution	250*122	250*122	250*122	296 * 152	400 * 300	400 * 300
Pixel Density	130 dpi	130 dpi	130 dpi	125 dpi	120 dpi	120 dpi
Weight	34g	31g	35g	38g	110g	92g
Display Colour	BWR/BWY/BW	BWR/BWY/BW	BW	BWR/BWY/BW	BWR/BWY/BW	BWR/BWY/BW
Model	CR2450 * 2	CR2450 * 2	Specific low temperature battery	CR2450 * 2	CR2450 * 4	CR2450 * 4
Battery Lifetime	5 Years (5 updates/day)	5 Years (5 updates/day)	5 Years (5 updates/day)	5 Years (5 updates/day)	5 Years (5 updates/day)	5 Years (5 updates/day)
Display Technology	EPD	EPD	EPD	EPD	EPD	EPD
Communication Protocol	Bluetooth® Low Energy 5.0	Bluetooth® Low Energy 5.0	Bluetooth® Low Energy 5.0	Bluetooth® Low Energy 5.0	Bluetooth® Low Energy 5.0	Bluetooth® Low Energy 5.0
Viewing Angle	Near 180° Viewing Angle	Near 180° Viewing Angle	Near 180° Viewing Angle	Near 180° Viewing Angle	Near 180° Viewing Angle	Near 180° Viewing Angle
Operating Temperature	0 °C - 50 °C	0 °C - 50 °C	0 °C - 50 °C	0 °C - 50 °C	0 °C - 50 °C	0 °C - 50 °C
Storage Temperature	-20 °C - 60 °C	-20 °C - 60 °C	-20 °C - 60 °C	-20 °C - 60 °C	-20 °C - 60 °C	-20 °C - 60 °C
Water Features (IP Rating)	IPX5	No support	IPX7	No support	IPX5	No support
Fixing Ways	Shelf Rail/ Bracket/Ice Plug etc.	Shelf Rail/ Bracket/Ice Plug etc.	Shelf Rail/ Bracket etc.	Shelf Rail/ Bracket/Ice Plug etc.	Bracket/Ice Plug etc.	Bracket/Ice Plug etc.
Compliance	BQB/FCC/CE/ RoHS	BQB/FCC/CE/ RoHS	BQB/FCC/CE/ RoHS	BQB/FCC/CE/ RoHS	BQB/FCC/CE/ RoHS	BQB/FCC/CE/ RoHS



Bluetooth Gateway Central Controller

Working as a center controller of Bluetooth devices.

Bluetooth Gateway Central Controller

The gateway DG04-G1 working as a center controller of Bluetooth devices, monitoring their wireless signal and transmitting to IoT Cloud Platform via Wi-Fi or Ethernet.

DG04-G1 features a fashion appearance with 7-color light loop, which appears different colors according to different status. With high-sensitivity Bluetooth signal reception, it supports a wide monitoring range. Moreover, its professional router meets the needs of big data processing. Assembled with multiple BLE modules, it is capable of sending multichannels of data at the same time and binding with tags more exible. It also boasts with high transmitting speed, anti-interference and strong stability.

Key Feature



Multichannel BLE modules



Strong stability



More flexible binding operation with tags



300m monitoring range



High-speed transmission



Anti-interference



Better network adaptability



Seven-color light loop

Applications



Supermarket



Clothing Store

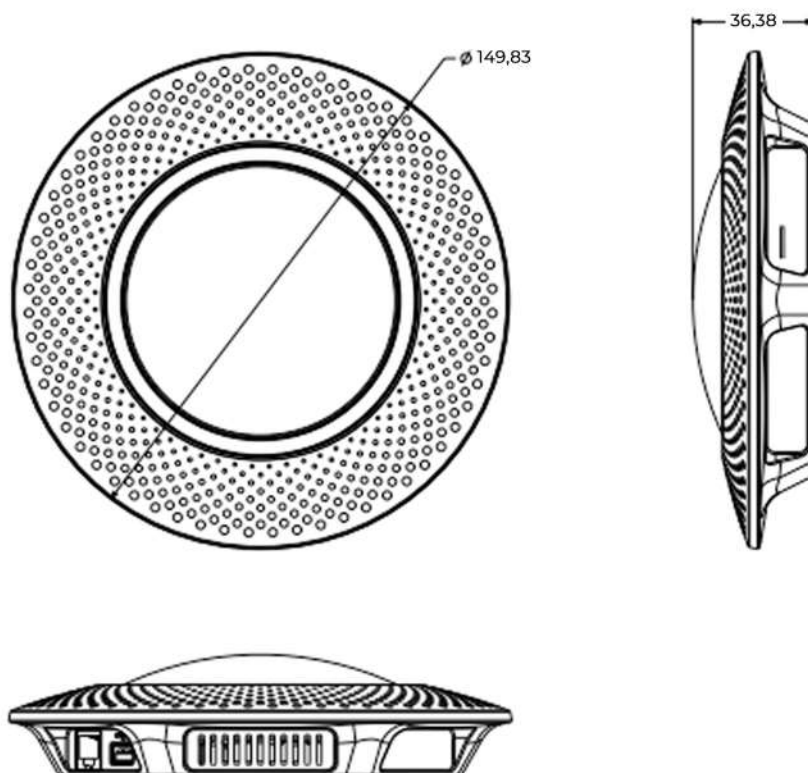
Specifications

Material	ABS	Power by	5V 1A DC adapter or PoE
Color	White	Interface	Network Interface/ USB Interface
Dimension	Ø150x36mm (Built-in antenna)	Installation	Ceiling, Wall-hung, Horizontal Arrangement
Weight	165g	Upgrade	USB or OTA
Range	300 meters in open area		

Technical Parameter

WiFi Protocol	IEEE 802.11 b/g/n	Wi-Fi	5V 1A DC adapter or PoE
WiFi Power	18dBm	BLE	Network Interface/ USB Interface
Bluetooth Protocol	BLE 5.0	Working Temperature	Ceiling, Wall-hung, Horizontal Arrangement
Bluetooth Receive Sensitivity	-108dBm		

Dimensions (mm)





DG03-A1D24

DG03-A1W32 | DG03-A1W43 | DG03-A1W50 | DG03-A1W55

Key Feature



Ultra-narrow frame design



Full HD display,
ELED screen



24/7 uninterrupted operation



Operating system:
Android 9.0

Applications



Restaurant



Service Hall



Clothing Store



Optical Store

Specifications

Model	Name	DG03-A1D24
Mainboard	OS	Android 9.0
	GPU	Mali-G52
	RAM	2GB
	ROM	16GB
Display	Size	23.8-inch
	Response Time	8 ms (typ)
	Resolution	1920 × 1080
	Display Colors	16.7 M (8bit)
	Contrast	1000:1 (typ)
	Visual Angle	178°(H)/178°(V)
	Brightness	700cd/m ² (typ)
Interface	LAN IN	1
	HDMI	1
	USB	2
Wi-Fi Module	Wi Fi+Bluetooth	Support
	Operating Frequency	2.4GHz
Power	Power Input	90~264V,50/60Hz
	Max Consumption	36W
	Standby Consumption	<0.5W
	Speaker Power	2*3W
	Service life	30000 hours
General Environment	Working Temperature	0°C to 40°C
	Storage Temperature	-20°C to 60°C
	Working Humidity	20% to 80% RH
	Storage Humidity	10% to 90% RH
Physical Parameters	Product Dimensions	615.36*28.5*318.75 (mm)



DG03-A1F43

DG03-A1F43

Key Feature

FullHD Full HD display



ELED screen

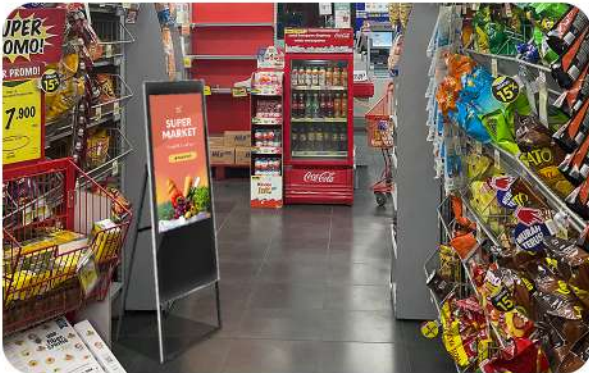


Built-in Speakers



Operating system:
Android 7.1

Applications



Supermarket



Restaurant



Clothing Store



Cafe

Specifications

Model	Name	DG03-A1F43
Mainboard	OS	Android 7.1
	CPU	Quad core ARM-A17 1.8GHz
	Chipset	RK3288
	RAM	2GB
	ROM	8GB
Display	Size	43-inch
	Backlight	ELED
	Aspect Ratio	0.672916667
	Response Time	8 ms
	Frequency	60Hz
	Resolution	1920 × 1080
	Display Colors	16.7 M (8bit)
	Contrast	41.66736111
	Visual Angle	178°(H)/178° (V)
	Brightness	300cd/m ² (typ)
Interface	RJ45	1
	HDMI OUT	1
	TF	1
	USB2.0	2
	AUDIO OUT	1
Support Format	Video	H.264/RM MPEG2/ MPEG4 H.265/ AVS2
	Audio	MP3/WMA/WAV/APE/FLAC/ AAC/OGG/M4A/3GPP
	Image	JPG/BMP/PNG
Network	Wi-Fi	Support 802.11b/g/n protocol
	LAN	RJ45
Power	Power Input	100~240V
	Max Consumption	<70W
	Speaker	8 Ω 5 Watt/channel
	Operation Time (h)	7*24
	MTBF	30000 hours
General Environment	Working Temperature	0°C to 40°C
	Storage Temperature	-20°C to 60°C
	Working Humidity	10% to 85% RH
Installation	Wall-mounted	Support
Physical Parameters	Product Dimensions (L*H*W)	1700*603*83 (mm)
Accessories	Standard	Power Cable*1, antenna*1, User Manual*1, Wall Bracket *1



Electronic Price Tag

Color: Grey

DG04-B1N10 | DG04-B2N10

Key Feature



Simple Texture



Safe power Supply

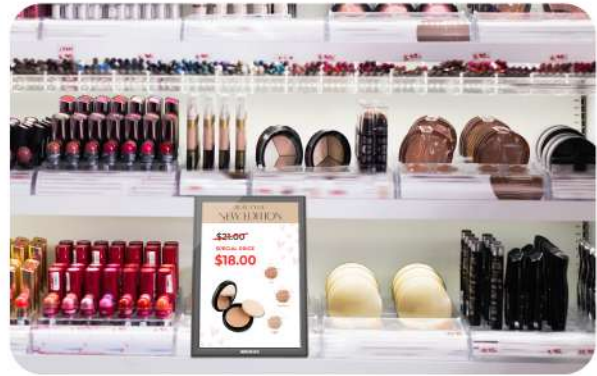


Fine-tune Uniformity

Applications



Supermarket



Cosmetic Store



Clothing Store



Optical Store

Specifications

Display		
Model	DG04-B1N10	DG04-B2N10
Display Area (mm*mm)	244.14*159.1*14.4	244.14*159.1*13.9
Display Area (mm*mm)	135.36*216.58	135.36*216.58
Weight (g)	565g	415g
Hardware Platform		
CPU	A7	A7
Flash Storage	128MB	128MB
OS	Linux or Android	
Appearance		
Screen Size (inch)	10.1	10.1
Resolution (pixel)	800*1280	800*1280
Display Technology	TFT IPS Full view screen	TFT IPS Full view screen
Viewing Angle	≥160°	≥160°
Work Environment		
Product Life	> 30000h	
Power Supply Mode	Track Rail + Power supply	
Operation Temperature	0~50°C	
Electrical Parameters		
Operating Voltage	DC12V	
Power Consumption	5W	3W
RF Parameters		
Wireless Protocol	WIFI - IEEE 802.11 b/g/n	
Operating Frequency Band	2400MHz ~ 2483MHz	



GOOD GROCERY

GOOD GROCERY ONLINE STORE

The Most Trusted Grocery Shopping App in 2022

- ✓ Discount 30% Off
- ✓ Free Delivery Service
- ✓ High Quality Products

Healthy food is defined as food that provides you with the nutrients you need to support a healthy body, and get the energy it needs.

SAVE 25% FOR ALL ITEM

DOWNLOAD NOW

www.goodgrocery.com

Poster Cabinet

LED poster screen

DG04-B1N10 | DG04-B2N10

LED poster screen is a digital billboard that client can upload their videos and digital content in the simplest way to showcase their core products. Fashionable and simple. It is portable and easy to maintain, Users can place it anywhere.

Key Feature



Simple Operation



Widely Applicable



Easy To Maintain

Applications



Supermarket



Perfume Store



Clothing Store



Restaurant

Specifications

Display		
Model	DG01-A6P18	DG01-A6P25
Pixel Pitch	1.8mm	2.5mm
Module Size	320 x 160mm	320 x 160mm
Module Resolution	170 x 85dots	128 x 64dot
LED Configuration	SMD 3 in 1	SMD 3 in1
Module Structure	SMD1515	SMD2121
Display Dimension	1920 x 640mm	1920 x 640mm
Cabinet Size	2008*652*450mm	2008*652*450mm
Frame Material	Steel	Steel
Frame Color	Black (default)	Black (default)
Weight	45kg / unit (approx..)	45kg / unit (approx..)
Brightness	≥800nit	≥800nit
Viewing Angle	160° H; 140° V	160° H; 140° V
Refresh Rate	3840Hz	3840Hz
Contrast Ratio	125.0006944	125.0006944
Operation Power	AC110 / 240V, 50-60Hz	AC110 / 240V, 50-60Hz
Max Power	800W / m ²	600W / m ²
Average Power	240W / m ²	180W / m ²
Connection Type	USB Disk / Wi-Fi	USB Disk / Wi-Fi
Supported Media Files	Video / Photo	Video / Photo
Operating Temperature	-10°C-+40°C	-10°C-+40°C
Storage Temperature	-20C-+55C	-20°C-+55°C
Operating Humidity	10-65% RH. No Condensation	10-65% RH. No Condensation
Storage Humidity	10-90% RH. No Condensation	10-90% RH. No Condensation
Operating Lifetime	100.000 Hours	100.000 Hours

ZK DIGIMAX

 www.zkdigimax.com |  sales@zkdigimax.com

ZKTeco Middle East, P.O. Box 4323 Office No. 502 & 503,
Bay Square Building 1, Business Bay, Dubai, U.A.E.
Tel: +971 4 392 7649