

#### APPLICATION

Half-mask respirator SECURA 3000 complete with appropriate filtering elements can be used as a protection of the respiratory system.

#### CHARACTERISTICS

Half-mask SECURA 3000 consists of the body made of rubber silicone, two bayonet locks with inhaling valves, an exhalation valve, and head harness which allows fitting correctly the mask to the user's face. All parts are replaceable. It is easy to clean and disinfect. Reusable half-mask respirator SECURA 3000 after having been assembled with relevant SECURA B.C. filters (particle filters, gas filters, combined filters) protects the respiratory system against air pollution in the form of dust, fumes, mists, vapors, and gases.



#### REQUIREMENTS

Half mask SECURA 3000 meets requirements of:

- the relevant Union harmonization legislation: Regulation (EU) 2016/425 of the European Parliament and of the Council of 9 March 2016 on personal protective equipment and repealing Council Directive 89/686/EEC.
- Harmonized European Standard **EN 140:1998**,

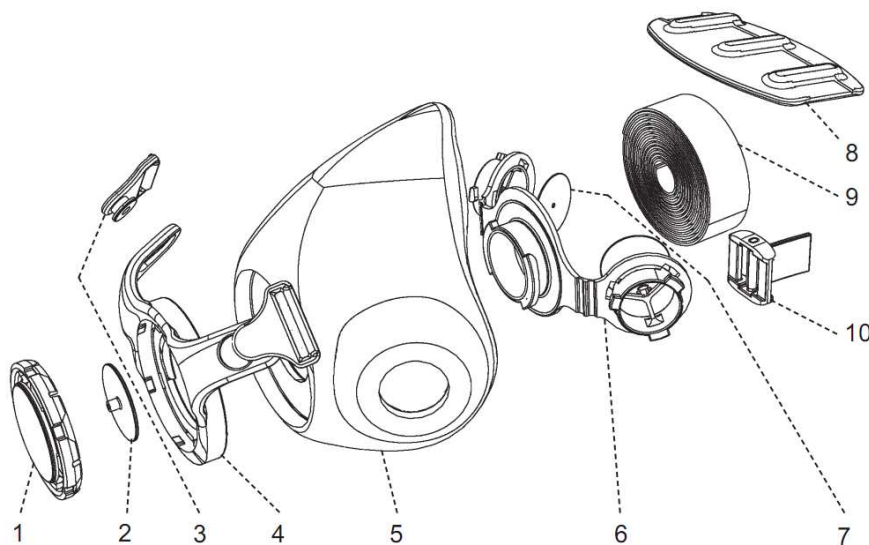
#### RECOMMENDATIONS AND RESTRICTIONS IN USE

1. Mask does not protect against carbon monoxide and may not be applied in the case:
  - when the concentration of the oxygen in the air is lower than 18% vol. and in small, not properly ventilated chambers (for example: in the channels, wells, tanks).
2. Do not apply the half-mask while:
  - the characteristic smell of a harmful substance can be distinguished or it acts irritating on skin and eyes.
  - The contaminants' concentration is insensible or it exceeds to level adequate to the applied filtering elements
  - it is impossible to fit the half-mask to the face properly (excessive unshaved growth, beard, changes on the skin)
3. It is necessary to leave the harmful area and replace the filtering elements when:
  - Half-mask or filters were damaged
  - the smell of the contaminants in the inhaled air can be recognized or any irritation symptoms are detected
  - any dizziness or other unusual reactions are observed
4. When the mask is not in use, it is advised to keep it in the original package or similar which ensure the protection against contamination.

### CONSTRUCTION

Half-mask SECURA 3000 consists of the following basic elements:

1. Exhalation valve cover
2. Exhalation valve disc
3. Head harness clasps
4. Ring with hooks
5. Body made of silicone
6. Valve insert
7. Inhalation valve disc
8. Head harness
9. Head harness textile tape
10. Buckle



### STORAGE

The half-mask should be stored in dry storage rooms, free from harmful vapors and gases at the temperature keep in the range between  $-5^{\circ}\text{C}$  -  $+40^{\circ}\text{C}$  and relative humidity of the air below 80%. Mask should not be stored together with toxic or harmful substances nor with materials emitting unpleasant smell or acting aggressively with the elements of the mask. It should be protected against mechanical damage.

### DURABILITY

The warranted period of the storage of the originally packed respirator is 5 years from the production date.

Catalog number	Catalog chart number
S53TOSM0	KK-030/2