

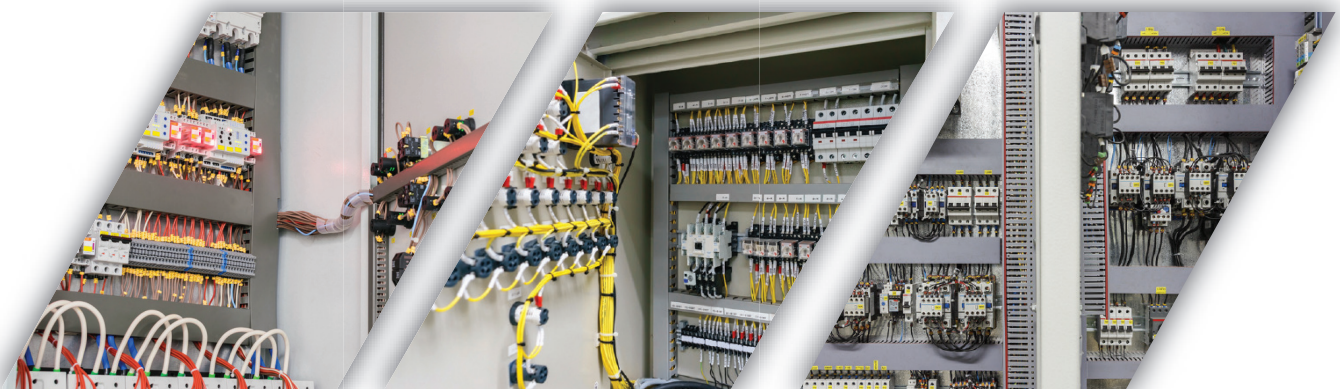
REACTON

FIRE SUPPRESSION

ELECTRICAL PANEL AUTOMATIC FIRE PROTECTION



PROTECTING **YOUR FUTURE**, TODAY



WHY DO ELECTRICAL PANELS NEED FIRE PROTECTION?

Electrical fires are incredibly challenging to predict. Once started and if left to burn their effects are devastating. It is very difficult to identify early signs of an electrical system failure and therefore the risk of exposure to an electrical fire is typically greater when compared to other fire types. Reacton systems are designed to be cost-effective and are able to detect and suppress fires on time, every time.

Systems can be seamlessly integrated into building fire control systems including any associated audible and visual alarm devices. Reacton's fire suppression system has been designed to achieve high-quality outputs with minimum cost and time.

Scalable and adaptable, Reacton understands that ease of installation is essential for both new equipment and retrofit. This is why Reacton has researched and developed systems to protect small to large enclosures with multi-zone capability.

APPLICATIONS AND **RISK AREAS:**

- ▀ Data centres - fire can **spread quickly** to surrounding assets
- ▀ Electrical cabinets - **whole cabinet could be destroyed** which would lead to loss of data for a business
- ▀ Individual panels - have **critical importance to a business** and downtime could be costly for a company
- ▀ Server racks - **faulty wires, outdated components and lack of maintenance** all common causes of fires
- ▀ Switch panels - can spread to surrounding equipment and assets, **increasing damage**

THE ADVANTAGES OF A **REACTON SYSTEM:**

- ▀ **Fully Automatic** Fire Suppression
- ▀ **No External Power** Required
- ▀ Extremely **Low Maintenance**
- ▀ **24/7 Protection** without False Alarms
- ▀ **10 Year** Service Life
- ▀ **Retro and Factory Fit** Compatible
- ▀ **Compact & Lightweight** for Easy Installation

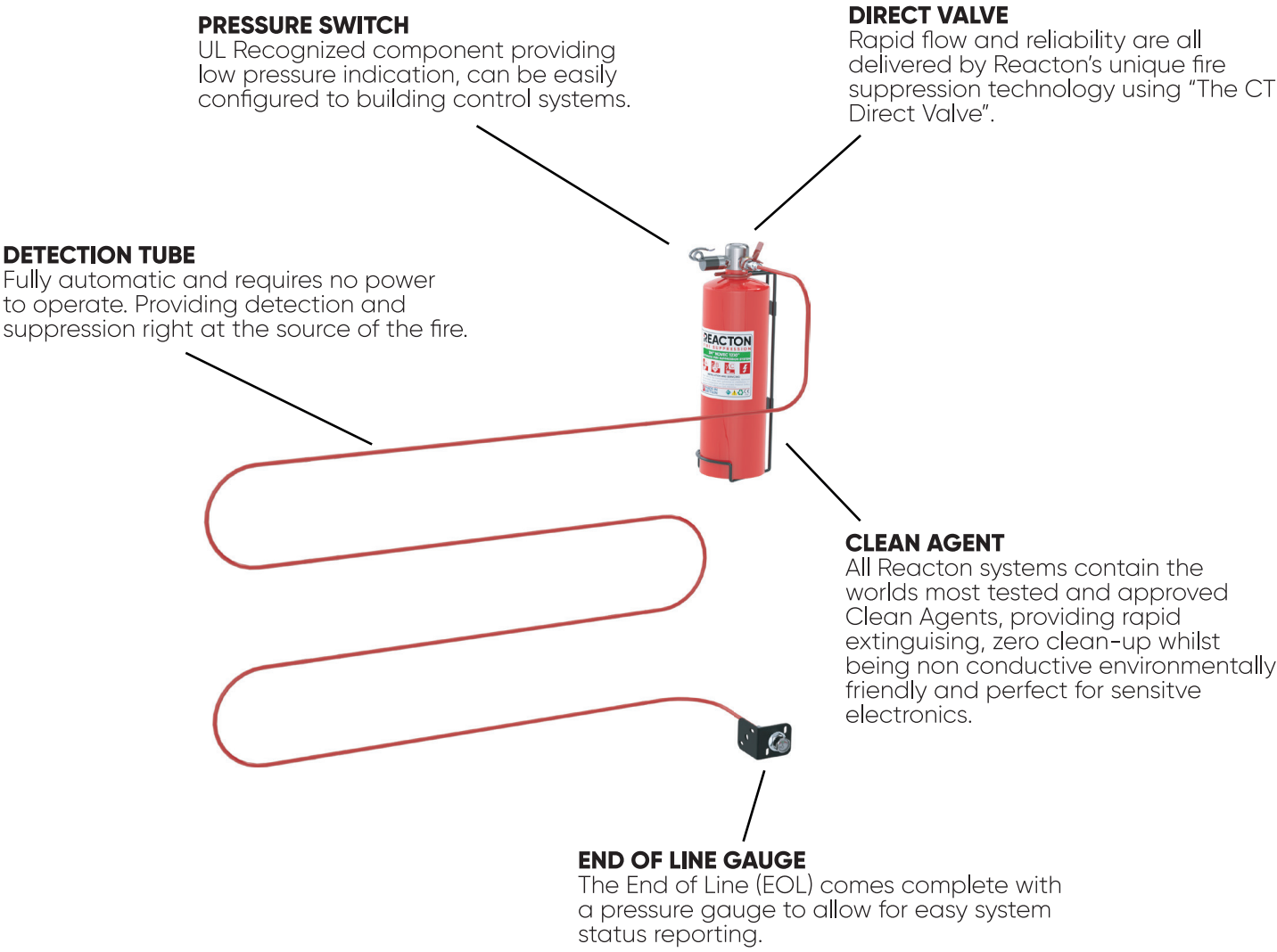
APPROVED TO THE **HIGHEST GLOBAL STANDARDS**

This world's first UL 2166 listing for DLP Clean Agent Technology complements our ILP listing and will give confidence to those not familiar with the system, and opens doors to customers and markets that require an independent, globally recognised listing on their safety equipment.

Gaining LPCB LPS 1666 guarantees our commitment to delivering a safe, tested and high-quality product to our customers. The approval is held for our range of direct clean agent electrical panel protection systems which include Reacton 1230 Clean Agent and FM-200™.



CLEAN AGENT FIRE PROTECTION:



The direct valve utilizes the detection tubing to automatically detect the fire and actuate the system. The tubing is installed in and around the fire-risk areas within the protected area. The tubing is pressurized with nitrogen and in communication with the cylinder contents.

When a fire occurs, the tubing will burst at the point of highest heat. As the cylinder's contents are directly in communication with the detection tube, immediate discharge of the extinguishing agent is started at the point of detection.

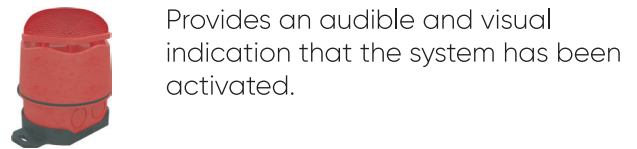
Reacton 1230 Clean Agent and FM-200™ provide rapid knockdown capabilities and are highly effective in enclosed spaces. Both are environmentally friendly clean agents that leave no residue, providing zero clean-up with excellent fire extinguishing capabilities.

ADDITIONAL SAFETY FEATURES:

PRESSURE SWITCH



SOUNDER BEACON



REACTON

FIRE SUPPRESSION

PROTECTING **YOUR FUTURE**, TODAY



REACTON HQ - UK & EUROPE

Address: 14 Baynes Place, Waterhouse Business Park,
Chelmsford, Essex, CM1 2QX, UK

Phone: +44 (0) 1245 930 296

email: info@reactonfire.com

web: www.reactonfire.com

REACTON NORTH AMERICA

Address: 23335 N 18th Dr #140,
Phoenix, AZ 85027, USA

Phone: +1 844 732 2866

email: info@reactonfire.com

web: www.reactonfire.com

REACTON UNITED ARAB EMIRATES

Address: Office 905, Sidra Tower
Dubai, UAE

Phone: +971 483 572 23

email: info@reactonfire.com

web: www.reactonfire.com



REACTON SYSTEMS PROTECT

- On-Road and Off-Road Vehicles
- Residential Kitchens
- Manufacturing and Machining Equipment
- Industrial Equipment
- Power Generation
- Data Centres
- Electrical Control Cabinets

