

Expertise to keep your
business moving forward



Powering Business Worldwide



We're here to learn about what matters most to you.



The world's demand for power keeps growing

Our vision is to improve the quality of life and the environment through the use of power management technologies and services. Our innovations help reduce energy requirements, operating costs and emissions for buildings, aircraft, trucks, cars, machinery and businesses. We focus on understanding the big-picture challenges of our customers and deliver innovative solutions that help them achieve their business objectives. The need for efficient - and sustainable — power will only grow. By 2050, the global population is expected to reach 9.7 billion. This, combined with a growing middle class in emerging markets, means that community infrastructure and services, such as buildings, hospitals, homes, roadways, airports, rail, water treatment facilities, utilities and data centers must keep pace. These are the things that people rely on every day. And it's our job to make sure it all works.

We have approximately 85,000 employees around the world helping our global customers in more than 175 countries use power more efficiently, safely, reliably and sustainably.

2022 Financials

Total sales: **\$20.8 Billion USD**

Net income: **\$2.5 Billion USD**

- Headquarters: Dublin, Ireland
- Chairman & CEO – Craig Arnold
- Key locations in Cleveland, United States; Shanghai, China; Morges, Switzerland; São Paulo, Brazil; Dubai, U.A.E.
- Regional engineering teams to support products and custom solutions
- Customers in more than 175 countries
- Approximately 85,000 employees*

*as of March 2022

A portfolio designed to meet your power management needs

Electrical




Power distribution and circuit protection

Electrical



Backup power protection

Electrical



Lighting and security

Electrical



Control and automation

Electrical



Structural solutions and wiring devices

Electrical



Solutions for harsh and hazardous environments

Electrical



Engineering services

Aerospace



Hydraulic and fuel systems

Automotive



Engine air mgmt., traction control and fluid products

Truck



Commercial vehicle clutches and transmissions

Digital



A range of suites for Data Centres and Utilities

e-mobility



eMobility and vehicle electrical components

e-mobility

Forward-thinking EV solutions

The electric revolution is here – and electric vehicle (EV) consumers have high safety, efficiency, and technology demands. Vehicle manufacturers are tasked with responding quickly with innovations that perform and inspire, while managing the dynamics of the market, regulations that push towards zero-emissions vehicles (ZEV), and increasing cost pressures. With a broad spectrum of experience and resources in industrial electrical applications and vehicle systems, Eaton is the right partner to help hybrid (PHEV, HEV) and battery electric vehicle (BEV) manufacturers take on these unique electrification challenges.

The eMobility business at Eaton is dedicated to helping manufacturers:

- Engineer the safest possible electric vehicles
- Develop the most efficient and effective EV designs
- Sell and support a global technology platform

Key growth drivers

Using our capabilities in safety, scalability, thermal management and fuel efficiency, we're developing products in these areas for hybrid and battery electric vehicles:

- Predictive health monitoring of critical electronics
- Active monitoring of power usage
- Advanced circuit protection
- Improved system efficiency

Electrical

We help customers meet the demands of the world's ever-growing need for power through improving efficiency and uptime, meeting regulatory requirements and protecting people and equipment. Our electrical products help utilities generate, transmit and distribute power. And once that power is distributed, we help people use it efficiently and safely, whether in a building, industrial facility, data center or home. Our solutions range from circuit breakers to switchgear to machine controls to emergency lighting. We offer a full portfolio of backup power and surge protection, providing maximum uptime and guarding against power surges or outages. In hazardous environments we help protect people and property with explosion-proof enclosures, signaling, notification and surveillance systems. Our comprehensive portfolio of end-to-end electrical solutions is complemented by our full-scale engineering and support services.

Our customers span a wide range of markets, including residential, commercial and institutional buildings, industrial facilities, utilities, data centers, oil and gas, mining and machine original equipment manufacturers (OEMs).

Key growth drivers

- Among the top global players in the low- and medium-voltage electrical industry
- Strongest distribution network in North America
- Market leader for applications in harsh and hazardous applications
- Positioned well to leverage growing demand for connected and intelligent solutions
- Strong intellectual property position

Aerospace

We are a market leader in hydraulics, motion control, air frame fuel, air frame pneumatics and engine solutions. Our aerospace products help control aerial navigation and propulsion systems as well as fuel management and distribution.

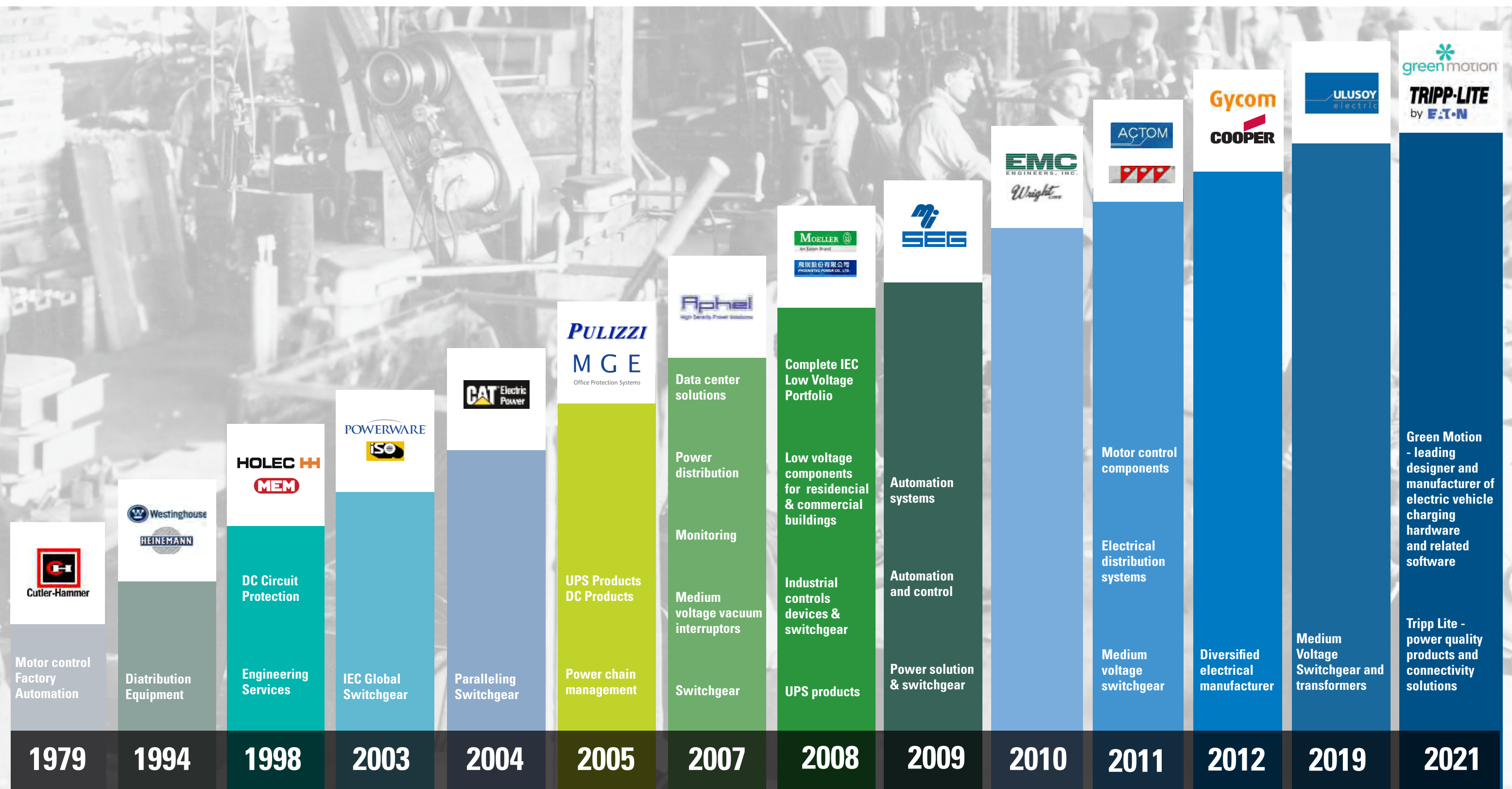
Our hydraulic, fuel, motion control and engine solutions power hundreds of military and commercial aircraft platforms. From the Mars rover "Curiosity" to today's most cutting-edge commercial and private aircraft, we help ensure aircraft availability, improved operational performance and regulatory compliance.

We work with our customers to develop safe, reliable and efficient solutions for aircraft, with an emphasis on lower lifecycle costs, system integration, optimized system controls and reduced weight.

Key growth drivers

- Global megatrends of increasing wealth and trade will increase demand for more passenger and freight air traffic, driving growth in new aircraft as well as aftermarket demand
- Strong intellectual property and patent position
- Large installed base enables strong aftermarket sales and services position
- Growing content of Eaton products on the newest aviation platforms

Eaton Acquisitions





Eaton in the Middle East

Eaton has built a strong reputation for offering our customers in the Middle East products and services that meet the challenges and demands of the region's diverse needs and dynamics.

We have been operating in the Middle East for more than four decades represented by our legacy brands Westinghouse and Cooper.

In 2013, Eaton's regional headquarters was opened in Dubai, United Arab Emirates, including an operations and sales office, as well as a manufacturing facility supporting low and medium voltage power distribution and motor control systems.

A strong part of Eaton's success in the region is due to our established channel partner relationships. Consultants who specify; the distributors and resellers who build market presence for Eaton products and who serve as Eaton ambassadors to the customer; contractors who install and service Eaton products; and suppliers who provide the necessary components to ensure products are delivered to the highest quality. The Eaton channel network is a vital component of the company's success in the region and in ensuring customers have access to on-the-ground expertise at all times.

Eaton Middle East Customer Experience Centre (CEC)

Eaton Middle East Customer Experience Centre (CEC) provides a unique opportunity to give visitors a comprehensive real-life experience to different type of applications in a friendly learning environment.

At the CEC, you'll learn about industry best practices and the latest innovations through physical demonstration and hands-on training sessions. You will also discover how we're reimagining innovation by adapting digital technologies — connected devices, data models and insights — to transform power management for safer, more sustainable and efficient power use.

Our applications will give partners, customers, consultants, students, contractors, installers and end-users an insight into smart power management, industrial control critical systems, Power Quality, Life Safety, Oil & Gas, and Utility applications.

Visitors to the Customer Experience Centre can:

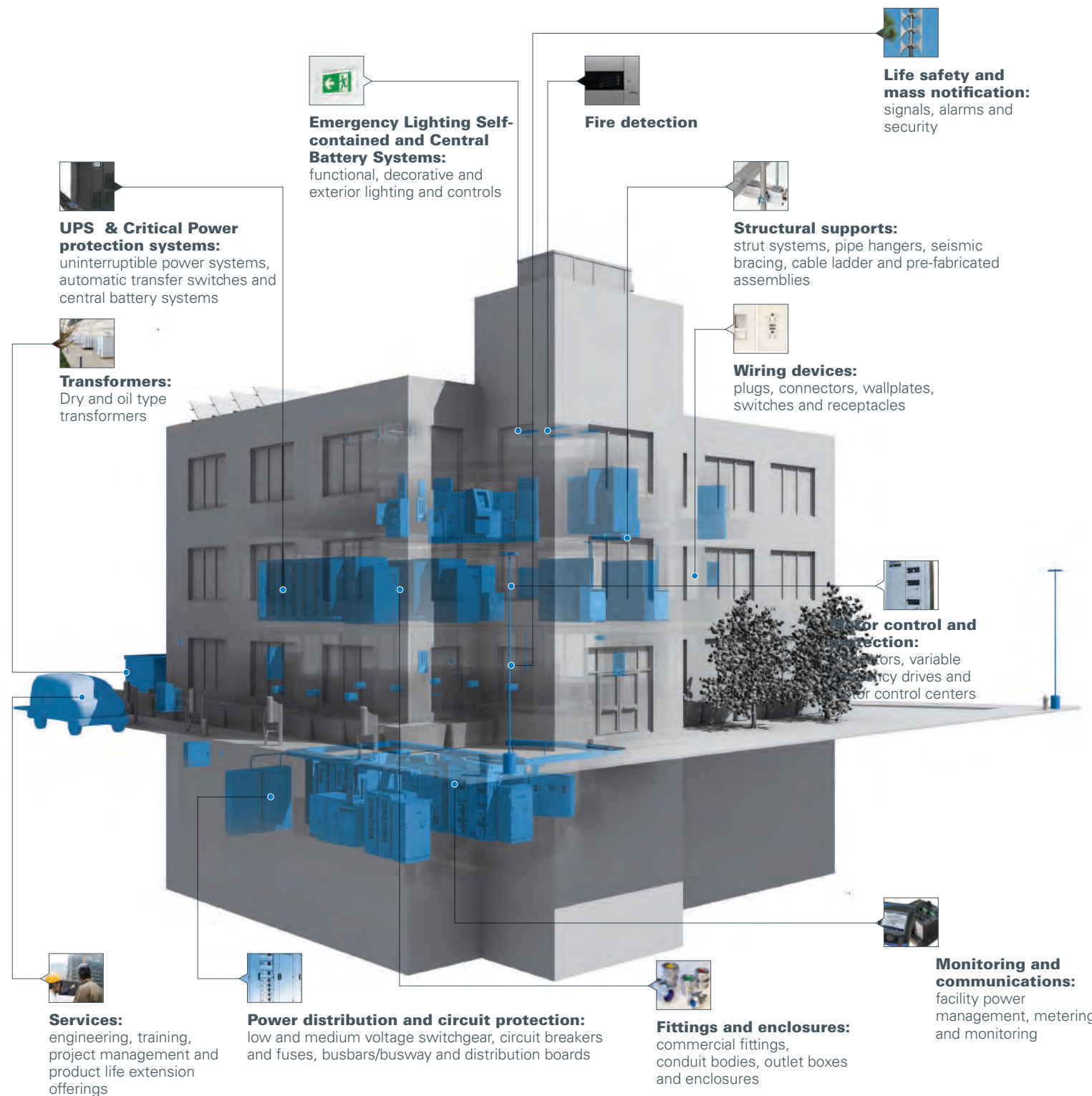
- Experience hands-on training with products in true application
- Learn through a broad offering of training courses within numerous markets that deliver expertise

- Address knowledge gaps within your organisations through training designed for seasoned and new engineers
- Meet and discuss with products and solution experts within Eaton technical teams



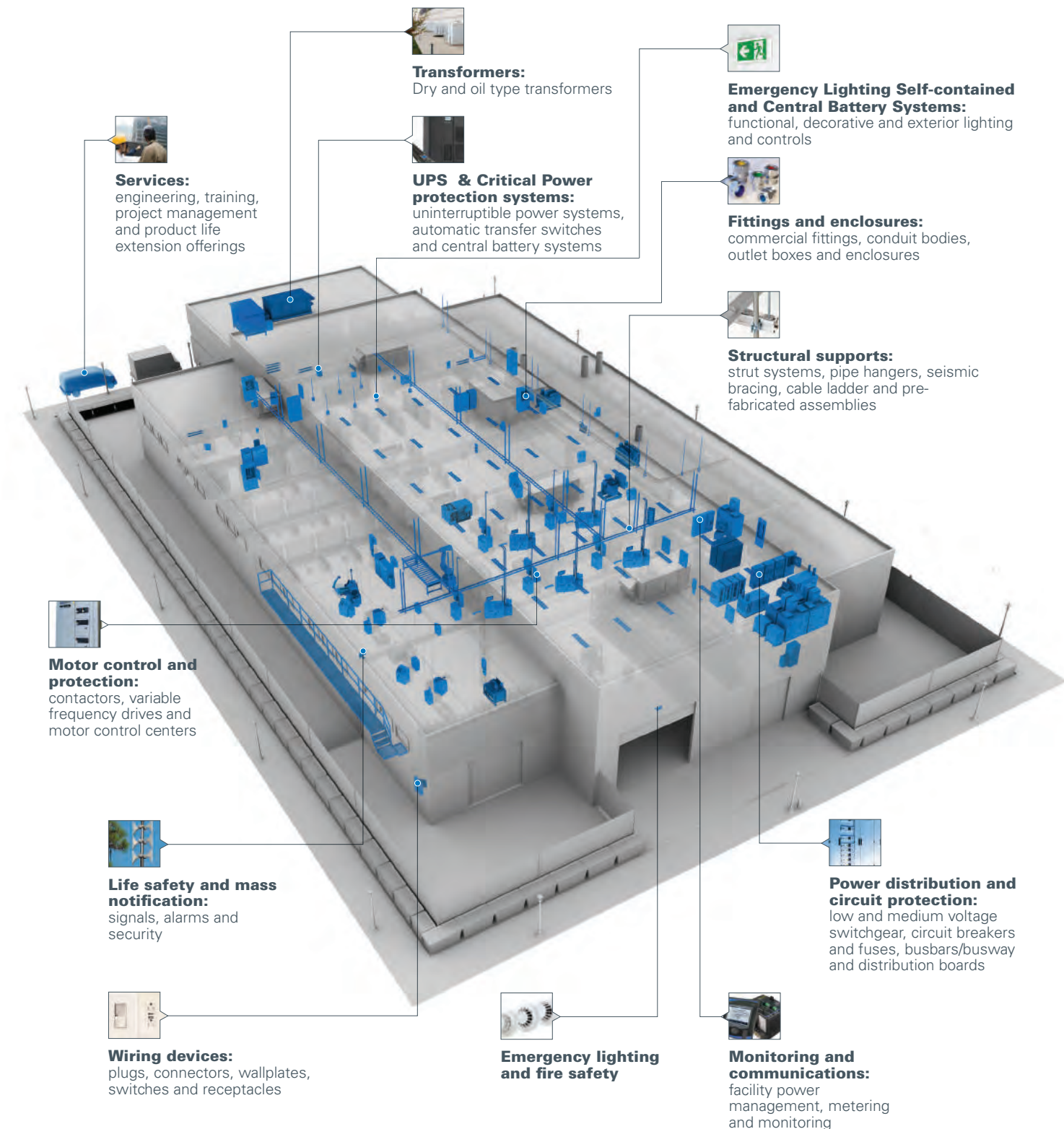
Commercial

Protect your people and reputation by increasing operational efficiencies, reducing energy usage and designing for functionality, well-being and productivity.



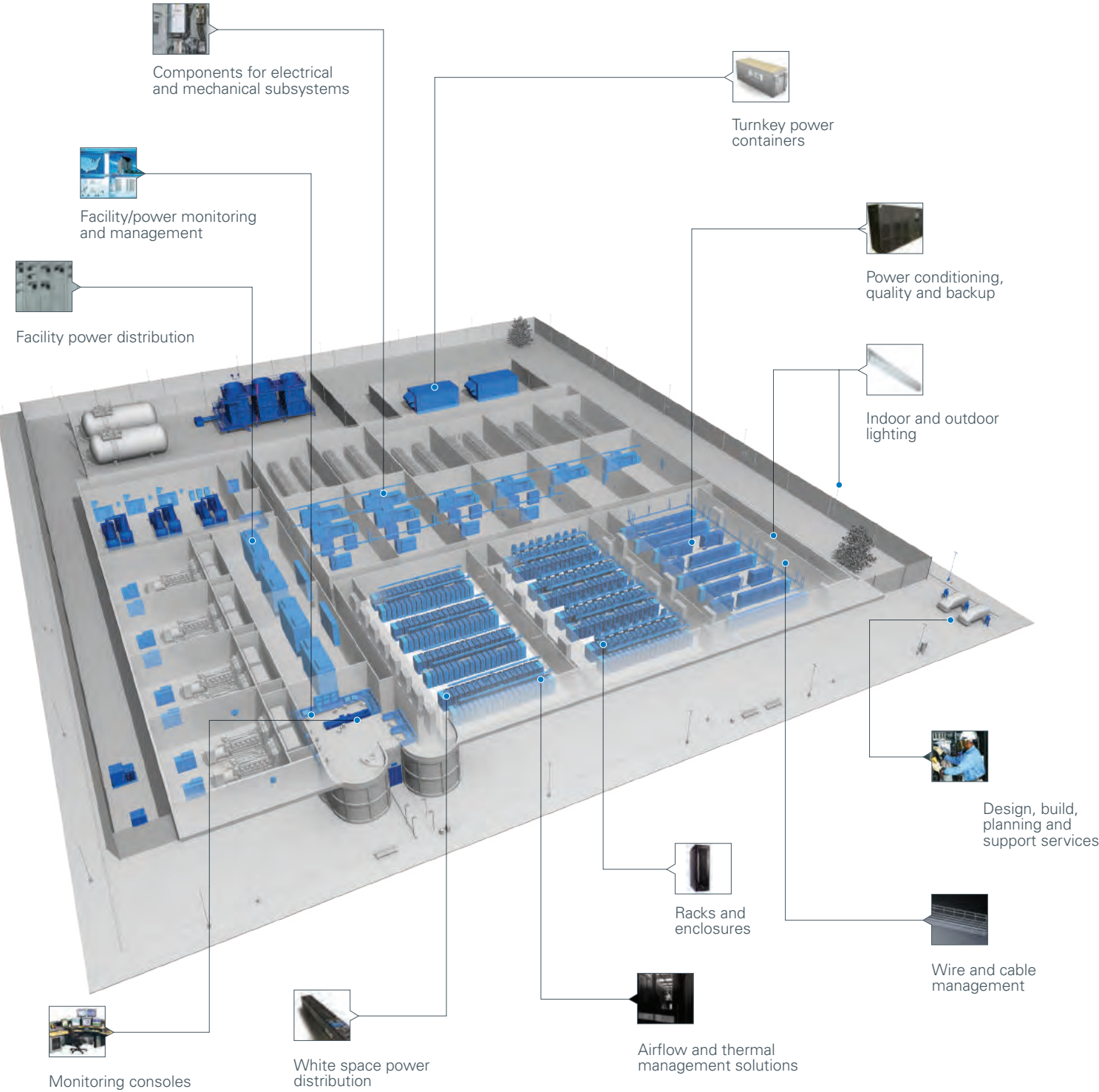
Industrial

Be more productive by maximizing the functional use of the space, while increasing energy efficiency and managing operational risk.



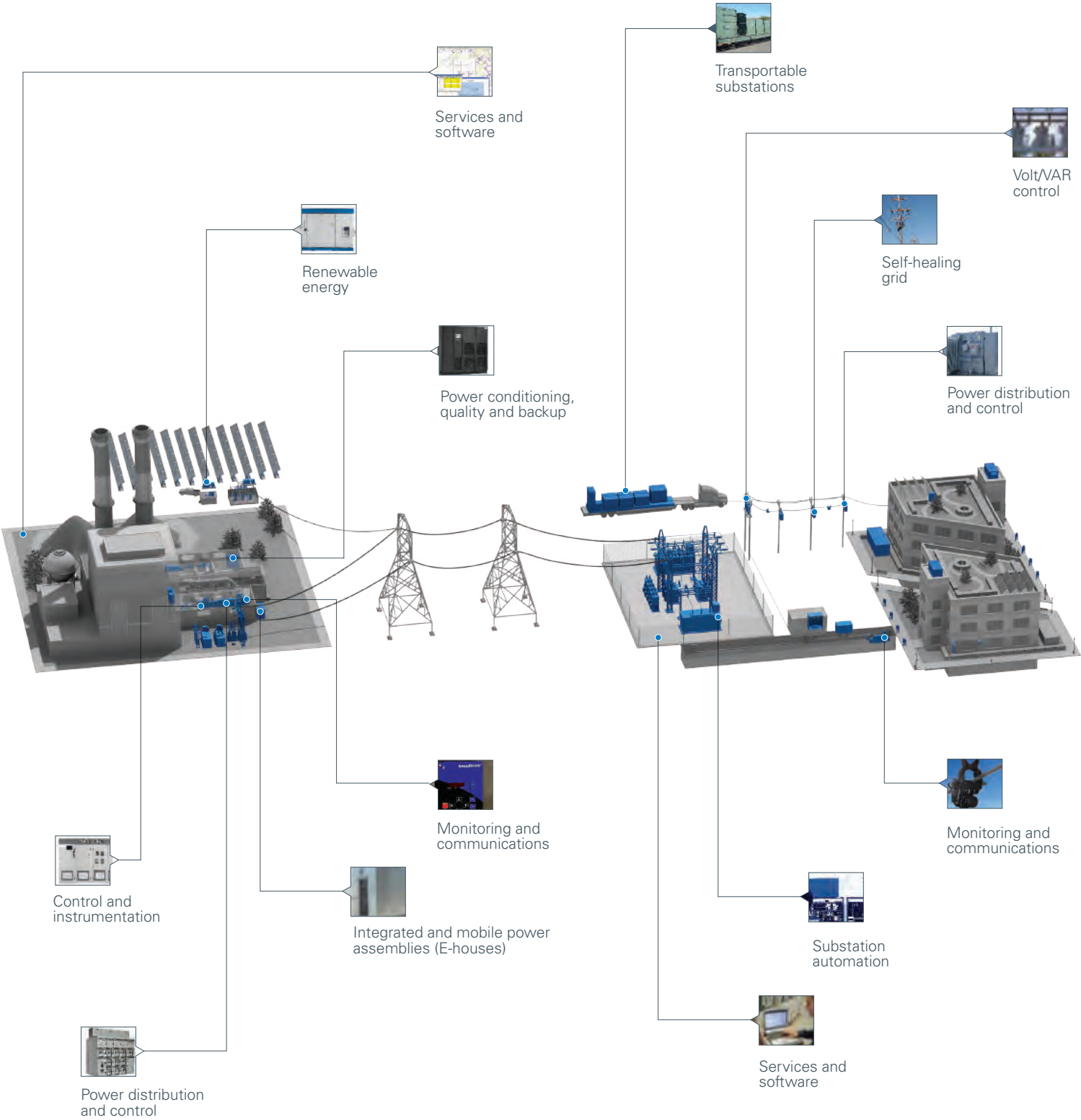
Transform your Data Center

Give new life to your data centre with products and services that maximise uptime, lower cost and scale to meet your needs today and well into the future.



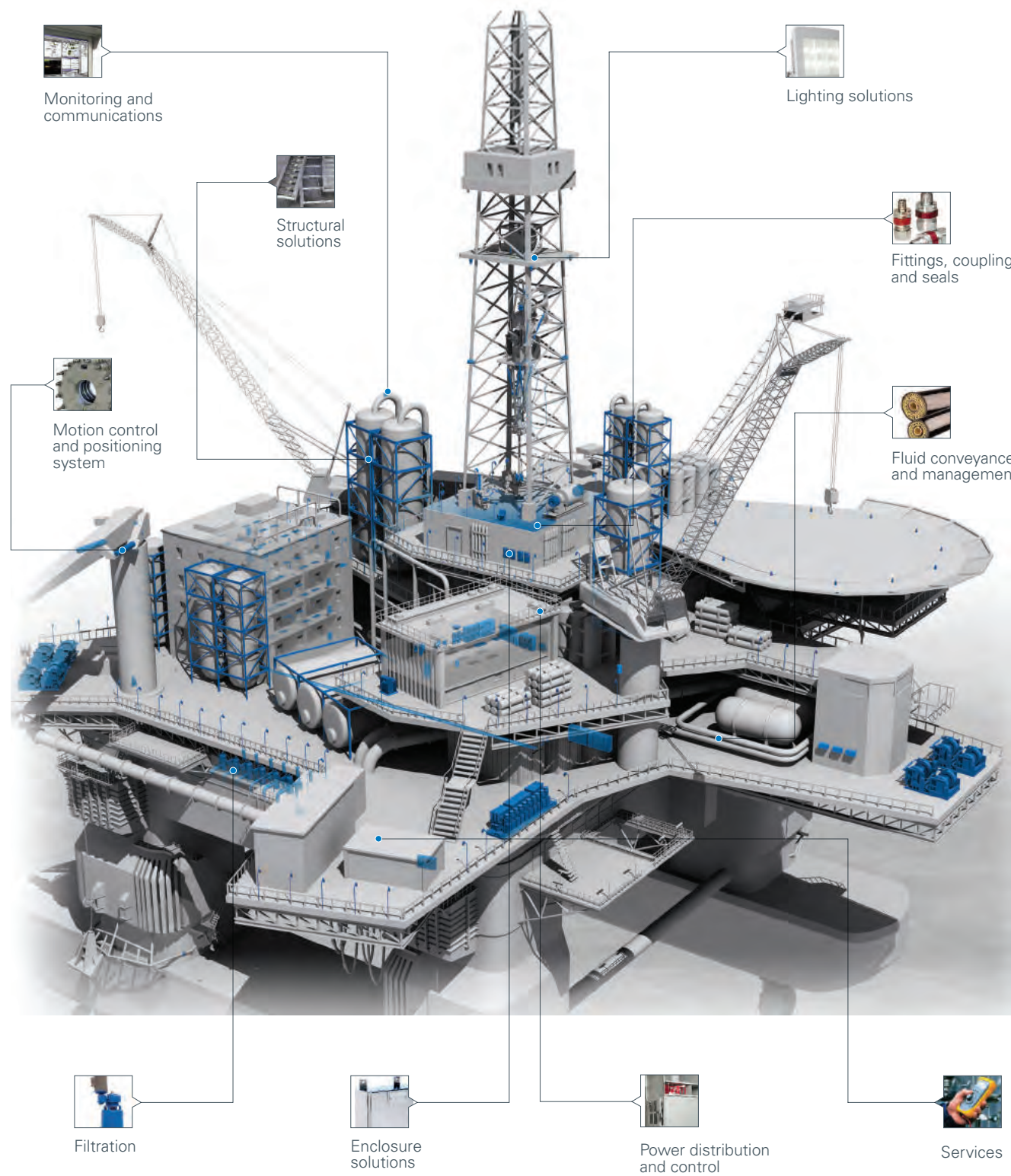
Utilities

Power distribution and delivery from generation to consumption.



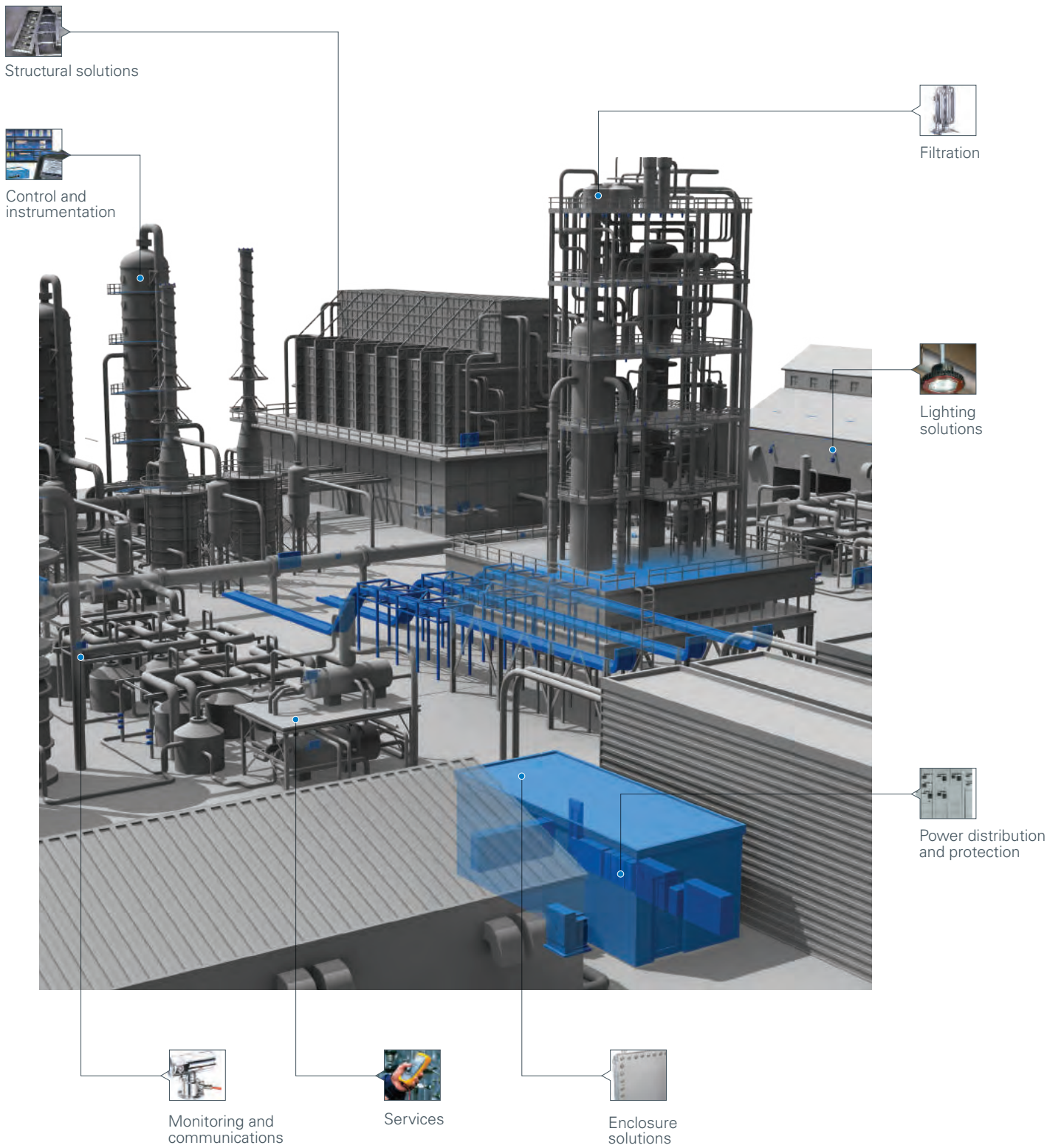
Oil & Gas Upstream

Exploration and drilling in onshore and offshore applications.



Oil & Gas Downstream

New construction and retrofitting to meet changing refining needs.



A legacy of innovation
We make stronger
together work.*

* Since 1911, we have continued to expand our knowledge and expertise in power management. Building upon our own heritage of innovation and uniting some of the most respected names in the industry.

EATON
Powering Business Worldwide

Collection of our MV & LV systems and solutions

Power Xpert® UX –Drawout MV Switchgears



Metal clad, Air Insulated, Drawout, MV Switchgear. Rated 4000A (max), 12kV, 25kA/3 17,5kV, 50kA/3s and 2500A, 24kA/3s to IEC 62271-1 / 100 / 102 / 200.

Design: Drawout type Vacuum Circuit Breakers, with CTs, VTs, Relays & accessories. LSC2B, PM.

Safety: AFLR. Shutters, Capacitive Cable-live Indications, Earth Switch, Mech. Interlocks & safe operation.

Size: Compact 400/600/800/1000 (W) & 1325-1500 mm (D) panels with ample cabling space.

XIRIA – “SF6-Free” Ring Main Unit



Ring Main Units. Rated 630A, 20kA/3s at 12kV & 630A, 16kA/3s at 24kV.

Design to IEC 62270-1 / 100 / 102 / 200 / 304.

Design: GREEN Environment friendly. Vacuum technology (including Ring Switches) with solid & air insulation. Maintenance free, Intrinsically safe, Compact & Automation ready.

Safety: Full safety interlock, Self-supporting protection relay & Automation ready.

Size: Compact. 600(D), 1505 (H) & 760/1110/1460/1810 (W) in 2/3/4/5 panel configuration.

Switchgear - HMM



- Medium voltage metal enclosed modular switchgear
- Rating up to 1250A, 36 kV
- Safe design: Certified arc-resistant classification AFL
- Flexibility of both SF6 / Vacuum Air Circuit Breaker
- Very quick turnaround of customer order engineering
- Isolating and breaking processes are carried out in SF6 gas environment and the busbar compartment in air leading to minimal dimensions
- Easy and safe to use with package type transformer stations
- All functional units which may be required in a switching and distribution center can be easily installed side by side

Switchgear - Xiria Extendable type



- Available as: 1-, 2-, 3-, 4-, and 5-panel Extendable type
- IAC: AFL 20kA – 1s
- Reliable switching in vacuum with Eaton Vacuum Interrupters
- Sealed for life compartment with conditioned (dry) air.
- Suitable for manual and automated operated networks
- Easy integration with smart grid and SCADA applications
- Visible safety: Viewing windows confirm physical state of switchgear.
- Highly flexible and compact
- Intuitive operation
- Logical interlocks to prevent from unsafe operation.
- Arc absorbers available for venting an internal arc in the same room.
- Up to 10,000 switching operations

Collection of our MV & LV systems and solutions

Ring Main URING



- For usage in advanced MV secondary distribution systems
- SF6 insulated busbars
- Modular and compact version available
- Suitable for use in SCADA systems
- IP 3X protection degree
- Tested to IEC 62271-200 standards
- Offering the option of single volume mounting of multiple modular units, as well as the option of expanding to connect with modular RMUs according to the structure.

Ring Main Unit Xiria Block type



- Available as: 2-, 3-, 4-, and 5-panel block type
- IAC: AFL 20kA - 1s
- Reliable switching in vacuum with Eaton Vacuum Interrupters
- Sealed for life compartment with conditioned (dry) air
- Suitable for manual and automated operated network
- Easy integration with smart grid and SCADA applications
- Visible safety: Viewing windows confirm physical state of switchgear
- Highly flexible and compact
- Intuitive operation
- Logical interlocks to prevent from unsafe operation

Oil Immersed Type Transformer



- 25kVA-10MVA power range, 36kV maximum voltage
- Manufactured according to IEC 60076 standards and the national and international standards TS EN, IEEE, CENELEX EN.
- Offering a wide variety of product types: distribution transformer, solar transformer, wind turbine transformer, earthing, transformer, dual voltage transformer, rectifier transformer, start-up transformer, auto transformer, shunt reactor, serial reactors limiting the short circuit current, multi winding transformer
- The distribution transformers can work safely under difficult conditions such as high altitude and marine environment due to the compliance with E2, C2, F1 class with special and international standards

Dry Type Transformer



- Up to 36kV, up to 3150kVA
- Manufactured according to IEC 60076 standards and national and international standards TS EN, IEEE, CENELEX EN.
- Non-flammable, self-extinguishing, free of toxic gas, low noise level.
- No cause for environmental pollution since the insulation materials do not include halogen and nitrogen and there is no risk of leakage.
- Maintenance only needed once a year and possible to do on site.
- A wide range of usage: distribution networks, co-generation systems, rectifier and traction applications.

Collection of our MV & LV systems and solutions

Pow-R-Way III & XAP – LV Busways and NON-SEG MV Busway



Pow-R-Way III Made in USA: Sandwich construction, Al housing, IP55/ (66), Cu or AL conductors, 660V E Pox, 225A to 6300A, upto 120kA/1sec as per IEC 6143976 and UL857 with DEKRA & Seismic certifications.

MV Voltage Busway as per ANSI/NEMA standards with epoxy insulation



Full range of standard accessories & special fabrications in aluminium and steel housing options. Local support available for site supervision for Installation, Testing & Commissioning.

AMPGARD – MV Starters upto 15kV



AMPGARD starters have Incoming Isolator & Fuse Protection. Isolator is interlocked with Vacuum Contactor & provided with motor protection relay type MP 3000/4000. NEMA/ANSI ICS3; UL, CSA & Seismic Certified.

Full Voltage Starters: 15kV, 5000hp max. & where permitted by the utilities.

Soft Starters: 4.16kV, 2500hp max.

Reduced Voltage Pr. Reactor: 15kV, 4500hp max.

Reduced Voltage Auto-transformer: 15kV, 4500hp max.

ATS - Automatic Transfer Switch



Contactor, ACB based
LV Auto-transfer Switches. 40 – 4000A with ATC-100/300/900 controllers.
UL 1008 & Seismic certified

Full Options with:

- Open Transition • Delayed Transition • Closed Transition
- Bypass Isolation • Maintenance Bypass • Draw-out Fixed and dual ATS & bypass drain-out

xEnergy LV Switchboards System:



- Design verified low voltage switchgear assemblies
- Conforming to IEC 61439
- Form of separation up to Form 4b
- Rating up to 7100A, 690V , 50 – 60Hz in fixed/plugin/withdrawable designs
- With 2 main busbar systems – TOP and REAR
- Degree of protection IP31 or IP42 or IP55
- Power section to mount ACBs and MCCBs-XP
- Fixed outgoer sections to mount MCCBs and starters – XF
- Withdrawable outgoer sections to mount MCCBs and starters – XW
- Freely configurable general purpose sections – XG
- Dimensioning tool xEnergy Configurator
- DEKRA certified
- xSpider software for dimensioning and calculation of LV Networks

Collection of our MV & LV systems and solutions

Some of our LV Power Distribution Solutions

xEnergy Basic Submain Distribution Boards EP Series



- Surface mounted and floor standing assemblies up to 630 A
- Standardized fitting-system arranged individually to fulfil customer needs
- Degree of Protection IP31 and IP55
- Surface-mounted, RAL9016 / RAL7035, F3A flange cut-outs
- Robust welded construction
- Two different locking mechanism.
- Flexible interior fittings
- Transparent or non-transparent door version available
- Divisible interior space for different compartments (vertical section)
- Flexible DIN-rail installation possible
- Universal mounting plates
- MCCB/MCB mounting kits
- SASY 60i busbar system capable of being integrated
- Components for clear and organized wiring routing

Distribution Boards & Panelboards:



- Design verified to IEC 61439
- Up to IP42 degree of protection
- SPN distribution boards rated up to 100A and available in 4, 6, 8, 10, 12, 14, 16 SP outgoing ways
- TPN distribution boards rated up to 125A/250A and available in 4,6,8,10,12,14,16,18 and 20 TP outgoing ways
- DEKRA certified
- Non-split and split types
- Flush and surface mounting types
- TPN Panelboards with 4,6,8,10,12,14,or 16 TP outgoing 250A/400A/630A/800A ways

xComfort Flat Distribution Board BF Series



- Flush/Surface mounted design based on 2-step principle (wall pan / mounting insert + door)
- 2- to 6-row @ 24mod. / row
- 4- to 6-row @ 33mod. / row
- Installation depth: 95mm
- RAL 9016 (white)
- Standard setup with Neutral and protective conductor terminals
- As media distribution board with micro-perforated MPL available

Din Rail Components:



- MCBs up to 125A rating in 1 P, 2P, 3P and 4P versions and trip types B, C & D
- 4.5KA, 6KA, 10KA and up to 25KA
- RCCBs up to 100A, 2P and 4P in 10mA, 30mA, 100mA and 300mA sensitivity
- 1 & 2 module RCBOs in 6KA and 10KA short-circuit rating
- Visual contact position indicator
- Switch-Disconnectors up to 125A rating in 1 P, 2P, 3P & 4P
- MCBs for DC applications with tripping characteristic C and rated current upto 50A
- MCBs complies with IEC 60898 and IEC/EN 60947-2 standard
- Guide for secure terminal connection
- Installation and removal of MCBs without removing the busbar
- Wide range of accessories and most items in a snap-on design

AFDD



- The most comprehensive fire and shock protection device
- Fully integrated 3 in 1 device with Overcurrent/Short circuit, Earth leakage & Arc fault protection
- Protects people, property & assets
- Easy to operate
- Rated current: 10 up to 40A
- Configuration: 2-pole
- Rated breaking capacity: 6kA & 10 kA
- Rated tripping current: 10mA & 30mA
- Tripping characteristics: B, C
- Sensitivity: AC, A

Some of our LV Power Distribution Solutions

Moulded Case Circuit Breakers:



- Rating up to 1600A in just 4 frame sizes for NZM series
- 1 P, 3P and 4P versions
- Short-circuit breaking capacity up to 150kA
- Fixed, Plug-in and Withdrawable types
- Field fittable breaker accessories with minimum variants
- Electronic release with communication facility and diagnostics functions
- Moulded Case Switch in 3P & 4Pole versions
- Protects cables, motors and generators
- Method of functioning and fitting of accessories is identical for every frame size
- Cost-effective compact BZM series circuit breakers in 1, 3 and 4 Poles with capacity upto 400A
- Complies with IEC/EN 60947-2 standard

Air Circuit Breakers:



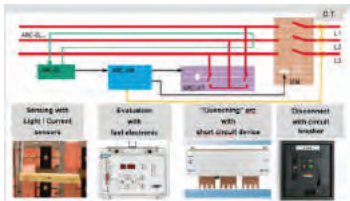
- Rating up to 6300A in just 3 frame sizes
- 3P and 4P version
- Fixed and draw-out options
- Field fittable accessories - Common for the complete range
- Programmable Trip units with display and communication facility
- Non-Auto option in 3P & 4Pole versions
- Complies with IEC/EN 60947-2 standard
- High withstand and interrupting ratings
- KEMA certified

Continuous temperature monitoring system- Diagnose



- Temperature monitoring with 24/7 approach
- Wireless up to 150°C, self-powered, maintenance-free, self-harvesting temp. sensor
- Predictive maintenance possibilities
- Controller as central device of data handling with 120GB storage capacity
- Trend values 24h / 4 weeks / 6 months
- Temperature limits (warning / alarm)
- Access via IP address or Modbus TCP
- Integrated webserver to access with laptop e.g.
- Connection to external screen via HDMI/USB

Active Arc Flash Protection System Arcon



- Master/Central unit, Slave units, Light Sensors, Communication cables & Arc quenching device
- Personnel and system protection
- TR 61641 criteria 1 to 7 (class C)
- $U_e = 690V$ 50Hz
- $I_{cw} = 85/105/120KA$ ($t = 1s/0.5s/0.2s$)
- $I_{p\text{arc}} = 100kA$
- $t = \text{Arc quenching within } 2 \text{ ms}$

Our Leading Control & Automation Solutions

Bussmann Series



- Low Voltage: Cylindrical, D&DO system, NH, UL and BS system
- High Speed: NA, Ferrule, BS and Square Body style, PV system, EV and HEV fuse links
- Medium Voltage: Overhead lines protection, Current limiting fuse links, ASL (Automated Sectionalizer Links)

Motor Starters:



- Mini contactors up to 12A
- Contactors up to 1600A AC-3 duty
- Contactors up to 2600A AC-1 duty
- 4P contractors up to 800A AC-1 duty
- Low power electric coils – field replaceable
- Thermal overload relays up to 630A
- Electronic overload relays up to 1500A
- Thermistor overload relays
- Motor protection circuit breakers up to 65A
- Non-reversing and reversing
- Rotary type to 65 A
- Motor starters up to 30 KW with standard components
- Combined with busbar adapters
- Advantage through mounting rail adapter

Variable Frequency Drives:



- Machinery Micro Drives DE1 range 0.37-7.5 KW (400 VAC) For basic application that require variable frequency and advanced motor protection
- Machinery Compact Drives DC1 range 0.75-22 KW (400 VAC) For standard applications such as fans, pumps and conveyors
- Machinery Advance Drives DA1 range 0.75-250 KW (400 VAC) Ideal for demanding applications that are speed- and torque-dependent
- Industrial General Purpose Drives DG1 range 0.75 to 630KW (400 VAC) Engineered for today's demanding commercial and industrial applications
- Micro general purpose drives DM1 range 0.75-22 KW (400 VAC) For applications such as multi pump, fans, compressors and conveyors
- Industrial High Performance Drives SPX range 0.55-75 KW (230 VAC) 0.75KW-1800KW (400 VAC) Designed specifically for high-performance industrial applications featuring high processing power and the ability to use information from an encoder or a resolver to provide precise motor control

Soft Starters:



- Compact design
- 2 phase control device up to 150hp
- 3 phase control up to 1000A
- Internal bypass relay – Automatically switched to bypass contact after the start cycle to reduce losses
- Inline and inside-Delta terminal types
- Pump, fan and conveyor application
- Extended communication capabilities
- Programmable relay output contacts

Cam Switches & Switch Disconnectors:



- High performance P & T Cam switches & Switch disconnectors
- Switches for ATEX Zone 22
- Possibility for non-standard contact sequences
- Insulated enclosures to IP65
- Comply with IEC/EN 60204 and IEC/EN 60947
- Suitable for maintenance and E/ Stop switches, within enclosures or door/rear mounting in control cabinets.

Our Leading Control & Automation Solutions

Command and Control devices:



- Pushbuttons, Selector Switches, EStops, Key operated actuators,
- Indicating Lights, Pushbutton stations, Palm switches and stack lights
- IP66, IP67 rated for use in harsh environments
- 22.5mm and 16mm Devices
- General Purpose AC and DC Rated
- Field convertible features

Position Switches:



- Wide spectrum of sensors
- Modular construction to IP66 protection
- Inductive, Capacitive & Optical designs
- Photo Electric Sensors
- Proximity Switches, Sensors
- Safety I Position switches
- Pressure Switches
- iProx Programmable Sensors

SmartWire-DT Communication system:



- Cost optimized communication system for Switchgear and industrial control equipment's
- Reduction of control wiring and PLC I/Os saves costs.
- Supports Profibus DP and CANopen field buses
- Automatic configuration of slave units
- Faster commissioning through simple testing
- Up to 99 participants for each gateways
- Transforms conventional switchgear and control gear to communication capable devices
- Software SWD-Assist helps in planning the Smartwire-DT line

Automation Products & Solutions:



- Modular PLCs & Compact PLCs
- Industrial PCs
- Visualisation Solutions
- HMI-PLCs
- Modular I/Os
- Remote I/O systems
- Visualisation & PLC programming softwares



The easyE4 control relays can be used within many different projects meeting your requirements for a flexible, modular system. If used in conjunction with the other components from the Eaton portfolio, such as our pilot devices or motor starters, the devices allow you to implement integrated system architectures that can be easily expanded.

Motor protection and control unit



The Power Xpert C445 motor management relay provides the highest level of monitoring accuracy and protection for the entire power system. Protections can range from the incoming power source feeding the motor to the individual pump or load. With the built-in user-defined logic and ground fault detection/monitoring, the C445 provides customers with the highest level of motor protection and versatility while maximizing uptime.

- Product range • 0.3–800 A • 690 Vac, 4 160 Vac with potential transformers (PTs)
• 20–80 Hz operation • Selectable trip class (5–40)

Explosionproof / Industrial products

Control & Apparatus



- Explosionproof VFDs
- Motor starters
- Control stations/switches
 - Our switches and enclosures are used in hazardous and non-hazardous areas to disconnect motor, lighting and other circuits and prevent arcing of the enclosed switch from igniting hazardous atmospheres.
 - Products: Disconnect switches, general use snap switches, light switches
- Panelboards
 - For hazardous location; suitable for use in areas where flammable, gases dusts and vapors exist. We offer a variety of panel boards models in Zone 1 and 2, Division 1 and Class I and II
 - Products: PowerPlus series, SynergyEX series, GUSC explosionproof circuit breaker load centers

Enclosures



- Junction boxes and empty enclosures
 - Enclosures, junction boxes and instrument housings built and configured to meet the most demanding hazardous area and industrial application requirements
 - Products: ECP explosionproof enclosures, EGB series explosionproof junction boxes, EJB series explosionproof custom built control panels, GUA series explosionproof junction boxes, Excel stainless steel enclosures, EJBA flameproof enclosures and GHG64 IEC Ex d explosion protected enclosures
- Enclosures with components
 - Products: GUB and GUBA IEC Ex d Explosion Protected Junction Boxes
- Instrument housings
 - Suitable for Class I and II, Division 1 and 2, Zone 1, 2, 21 and 22.
 - Products: GUB series explosionproof equipment housing

Industrial Fittings and Glands



- Conduit bodies and boxes
 - Conduit boxes and bodies for installation in hazardous area conduit systems to act as pull and splice outlets, mounting outlets or supports for luminaires, or sealing fittings.
 - Product: Condulet Form 8 Conduit Outlet Bodies
- Conduit seals/breathers/drains
 - Conduit sealing fittings that provide ventilation in enclosures, prevent accumulation of moisture in electrical systems, and prevent the passage of gases, vapors, and flames through conduit runs into other portions of an electrical installation.
- Conduit system unions, couplings, hubs, reducers and adapters
 - The miscellaneous fittings needed to complete an electrical conduit system from the overhead service entrance to machinery, luminaires, and/or final electrical outlets.
 - Products: Conduit Liner, Conduit Unions, Elbows & tees, EC, XD, XJG and XJGD couplings, commercial and Myers hubs, UNF, UNL, UNY, UNA and EL elbows. RE, REA, and REC reducers and adapters.
- Cable glands and accessories
 - Designed for strict adherence to global specifications meeting North American and international codes and standards including NEC, CEC, ATEX, IECEx, and regional certifications.
 - Products: North America and International standards; ADE, ADCC, ADCS, TMC, TECCK, CGB, TMCX

Explosionproof / Industrial products

Lighting



With the Crouse-Hinds series, Eaton delivers advanced industrial lighting solutions, expert support and global certifications. Rely on Crouse-Hinds series for superior illumination, flexibility and safety in the most demanding environments.

- LED luminaires - the broadest portfolio for industrial and hazardous applications
 - Suitable for Zone 1, 2, 21 and 22, Class I and II, Division 1 and 2.
 - Application: Flood, Linear, High bay, Low bay high /mid bay, Mid/low bay,
 - Most popular products: Champ PFMA, Champ FMVA, PLLE, Pauluhn Summit, HLL, ExLin, eLLK, Champ Pro PVM, Vaporgard, PLE, Hazard Gard EVLL, NLE
- Fluorescent luminaires
 - For use in both hazardous and non-hazardous areas, fluorescent luminaires provide low operating cost, high light output per watt, low brightness, low glare, uniform light, and instant illumination.
 - Products: nLLK, eLLK non-metallic, Pauluhn FEPR, Champ VMVF
- HID luminaires
 - Use H.I.D. explosionproof lighting as general area or spot lighting where longer lamp life is required. Longer lamp life provides desirable maintenance cost savings and return on investment through the use of fewer luminaires, circuits, and apparatus.
 - Products: Champ VMV series, LMV series, and DMV series
- Emergency lighting
 - Emergency lighting and exit signs provide safe, reliable illumination during failure or interruption of power, as well as distinct, highly visible exit marking to indicate the direction of travel to exits.
 - Products: Light-Pak ELPS series, and LED N2LPS, UX series LED exit signs

Plugs and Receptacles



Rugged construction, extensive configurations, custom capabilities and numerous interlocked designs provide reliable NEC and IEC solutions for fixed or portable power applications.

- Pin and sleeve devices
 - Designed to support modularity of drilling rig systems by providing safe and reliable power connections for rigging up and rigging down equipment quickly and efficiently.
 - Most popular products: IEC 60309 Pin and Sleeve Devices and GHG 511, and heavy duty industrial GHG31
- IEC 309 devices
 - Available in heavy duty industrial and hazardous area designs, this global product line features the latest technological innovations to lead the way in IEC 60309 performance.
 - Products: GHG51, GHG51 SS
- NEMA configured devices
 - Product: ENR
- Interlocked receptacles
 - Supplies power to portable electrical equipment and provides safe disconnect means and short circuit protection. Interlocked units provide dead front receptacles. Connection cannot be made or broken when unit is under load.
 - Products: FSQC, EBBR, DBR, EPC
- Single-pole and multi-pin devices
 - Multi-pin and single pole connectors for hazardous and harsh industrial environments. Single pole connectivity to meet your most challenging needs, including a full line of Cam-Lok J and F Series, Posi-Lok, and Roughneck products.
 - Products: CZ and CRIG series, CEX series

Explosionproof / Industrial products

Hazardous Area Communications



Innovative and integrated signaling, communication and surveillance systems for explosive atmospheres and harsh industrial and marine environments.

- Visual and audible signaling devices
 - XB15 Strobes and DB3 Horns are designed for use in potentially explosive atmospheres and harsh environmental conditions. The enclosures are designed for use where light weight combined with corrosion resistance is required.
- Alarm call points
 - Manual fire and ESD alarm call points have been designed for use in hazardous locations and harsh environmental conditions. Suitable for use onshore or offshore, where reduced weight and a high level of corrosion resistance is required.
- VoIP and analog telephones
 - FernTel weatherproof analog or VoIP telephone, suitable for use in indoor and outdoor applications.
- CCTV camera systems
 - Designed specifically for the oil and gas industry, the CCTV product portfolio includes camera stations for hazardous and safe areas, control systems, monitors, software, cables and accessories. Hernis systems are renowned for their high quality and unrivaled durability. Each system is configured specifically for each project.
- Integrated multimedia communications systems
 - Communication devices for use in hazardous areas have to be especially well adapted to the extreme operating conditions they will be exposed to. Our Ex-telephones have been and are resistant to large temperature differences, air humidity, sea water, dust and strong mechanical wear and tear.

Process Instrumentation and Protection Products



MTL is a world leader in the development and supply of system infrastructure products and protection equipment. Many of the world's safety critical processes are monitored, controlled, visualized or protected by MTL products.

- Protection, monitoring and control of instrumentation signals within a facility's critical processes
 - Intrinsic safety
 - Surge protection
 - Process alarm equipment
 - HMI and visualization
 - Fieldbus
 - Industrial wireless
 - Industrial ethernet
 - Industrial security

Commercial Products



- Delivering quality, reliability, labor savings and lower installed cost
 - Fittings for EMT, Rigid/IMC and AC/MC/FMC
 - Liquid tight fittings
 - Conduit hubs
 - Outlet boxes and covers
 - PRE-formance™ pre-fabricated assemblies
 - Enclosures
 - Solar solutions

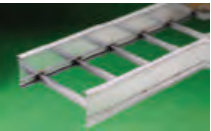
Airport Lighting Products



- Application-specific solutions for integrated Airfield Lighting and Control & Monitoring Systems worldwide
 - Control and monitoring systems
 - Approach and navigational aids
 - Guidance signs
 - Power and control equipment
 - Runway and taxiway lights
 - Solar lighting
 - Utility lights
 - Light bases

B-Line Series Products

Electrical Products



NEMA cable management systems

Designed for a variety of environments from light commercial to heavy industrial, we offer a NEMA cable support systems for industrial applications in stainless steel, fiberglass, hot dip galvanized steel, aluminum and pre-galvanized steel.

Eaton.com/cabletray



Metric cable ladder (MCL)

Designed to be in compliance with IEC standards, MCL cable ladder helps decrease project cost and engineering complexity by reducing the number of structural steel supports needed for cable ladder systems in heavy industrial environments.

Eaton.com/cabletray



FLEXTRAY wire basket

This flexible, field-adaptable cable management solution combines strength, lightweight construction, depth, and unmatched adaptability to support cables in a fast and economical way. Flextray™ can be cut and bent on the job site, allowing cable runs to be adjusted as needed.

Eaton.com/flextray



Cable cleats

Our cable cleats are designed to support and retain cables within your cable tray system in everyday conditions. More importantly, they help prevent damage in short circuit conditions.



4Dimension strut system

Eaton's 4Dimension™ strut system changes how installers build and install support systems for electrical, mechanical, plumbing, data centers, and HVAC in new and retrofit commercial and industrial applications.

These revolutionary strut profile designs and innovative accessories help installers compress project schedules and cut costs without sacrificing load while increasing configuration flexibility. With multi-sided functionality, the 4Dimension strut system delivers up to 50% savings on materials and installation time.

Eaton.com/4Dimension

Mechanical Products



Pipe hangers & supports

Manufactured from carbon or stainless steel and available in a variety of finishes, our pipe hangers and supports are suited for everything from indoor commercial to highly corrosive industrial applications. All of these products meet or exceed the MSS or Federal Specifications, and many are UL and FM listed. Pipe hanger and support products include beam clamps, pipe hangers, pipe clamps, pipe rollers, pipe supports, concrete inserts and support brackets.



TOLCO seismic bracing

Our seismic bracing products save up to 50% on installation and reduce complexity compared to standard strut hinge solutions. The TOLCO™ seismic bracing products meet UL, FM and OSHPD standards and are ideal for new and retro-fit applications. Our engineering team is always ready to help design a code compliant seismic support solution for your project.

Eaton.com/tolco



Snap 'N Shield solution

Now you have multiple options to help prevent insulation and pipe damage that may lead to costly leaks. Snap 'N Shield is designed to snap onto either strut channel or to pipe hangers. All options help eliminate movement while allowing for natural contraction and expansion of the pipe and insulation. Each solution requires no tools to be attached, which speeds up the installation process, delivering a lower total installed cost.

Eaton.com/snap-n-shield

Power Quality Solutions

Market-leading Power Quality Solutions

With over 60 years of experience in the design and production of innovative products, Eaton's Power Quality Business success is built on a foundation of world-leading historical UPS and critical power brands, ranging from Fiskars, Exide Electronics and Best Power through to Powerware and MGE Office Protection Systems, Phoenixtec, Pulizzi and Wright Line with the latest addition being the data centre power distribution specialist PDI.

Wide product range for diverse customers

When you invest in an Eaton solution, you can be confident that it offers the very highest levels of quality, reliability, functionality and value for money. Our comprehensive portfolio of advanced products and a wide range of professional services are backed by our hallmark commitment to the highest standards of business ethics and a customer focused business approach.

Solution for every application

No matter what your application, Eaton has a solution that meets your needs precisely



Single-Phase and Three-Phase UPS Systems

A comprehensive range of UPSs of different power ranges to product home appliances, networks and servers, medical equipment, industrial applications, critical building infrastructure, large data centres and more.

Single and Three-phase systems ranging from 350VA to 1.2 MVA with expansion capability to 7.2 MVA; including marine UPS systems, modular/scalable UPS solutions. Prepackaged data center solutions for small/medium and large data centers including IT racks, UPSs and ePDUs.



DC Systems

A broad portfolio of DC products and systems of all sizes to power today's advanced telecom equipment. Efficient Reliable Compact and Scalable DC UPS's to meet modern ICT converged data power requirements.



ePDU units

A complete set of enclosure based Power distribution Units (ePDU); designed specifically for Data Center Environments. Multiple configurations with Basic, Metered, Monitored (IP) and Managed technology for vertical, horizontal and retro fit PDU solutions.

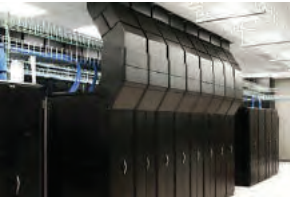


Busway PDU and STS – Data Center and Mission critical Power Distribution

Excellent solution for distributing power inside data centres manufacturing and assembly facilities, machine shops, schools and laboratories.

Software and Connectivity Products

A full range of software and connectivity products and remote management of power quality systems. Virtualisation ready Power and environmental management solution with Connectivity options certified to the latest cyber security standards.



Technical Support and Services

The most comprehensive range of service products including technical support, installations, commissioning, warranty, regular maintenance and management.

Market sectors

- IT and data centres • Electrical • Industrial • Telecoms • Finance • Public Sector • Oil and Gas
- Marine • Security • Media • Retail • Healthcare • Transport

Power Quality services

UPS Field Services

- 24 x 7 Services Contracts
- Warranty Extensions
- Commissioning and Installations
- Battery Replacements
- Ad-hoc Engineering

Service Matters

- Our trained service team is on hand 24/7 to minimise risks by detecting and addressing problems before they happen. You can expect:
- UPS placement
- Installation
- Commissioning/User training
- Maintenance contract

UPS Contracts

- Services Contracts to suit customer requirements:
- Preventative Maintenances
 - Emergency response 24 x 7
 - Call out facility 24 x 7
 - Fully Comprehensive or Pay as you Go!

Battery Services

- Professional replacement
- Comprehensive service
- Battery replacement options
- Disposal of the old batteries complying with Environmental Regulations

Remote Monitoring

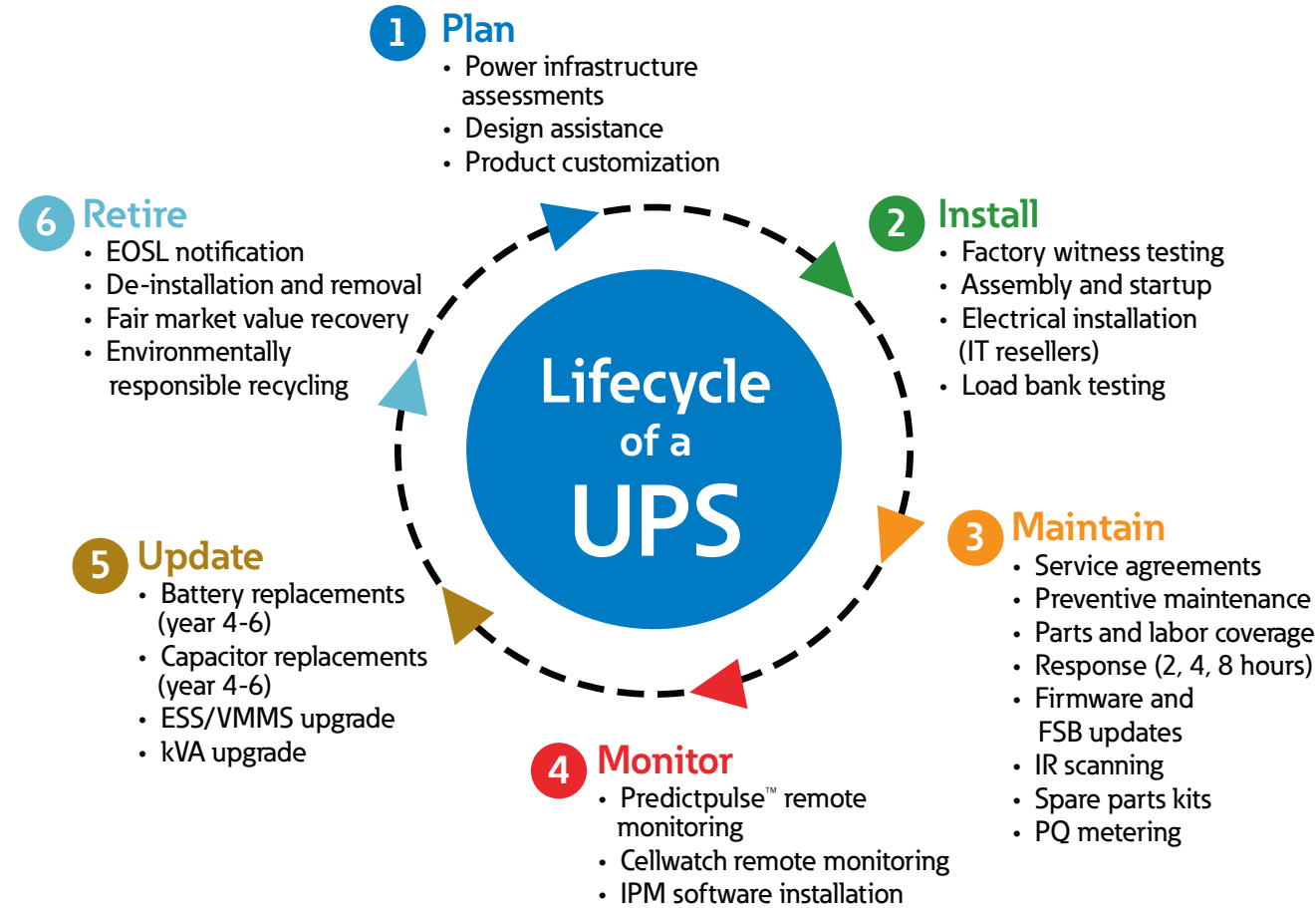
- Smart Communicator can notify your IT-department and an Eaton service technician 24/7
- Eaton Technical products specialists monitoring your UPS
 - Receive monthly performance reports of your UPS
 - Receive alarm notification by SMS or email

Services for units under warranty

- Extend the standard warranty of 1 or 3 additional years
- A higher service level for hardwired UPS for a total length of 3 years:
- One additional year of warranty
- Provides an Eaton technician for UPS commissioning or a preventive maintenance visit

Services for units in operation

- A complete batteries tray to exchange used batteries
- New Batteries for 1ph UPS
- Provides an Eaton technician for UPS commissioning or a preventive maintenance visit



Emergency lighting



CrystalWay IA

- LED light guide Technology with highly Transparent fame.
- Optimal illumination upto 500 cd/m²
- Inreased Affordance function enabled
- 10 years life time design without replacement of spare parts
- Li-On battery technology
- excellent recognition of the escape sign and a concise, discreet appearance
- offered with all accessories for wall/ ceiling with pictogram set
- ENEC approved: In accordance with EN60598-2-22



FlexiTech ED

- Multiple configurations in one box
- LED light guide Technology with Transparent baseplate
- Same accessories for Exit and Safety luminaires
- Increased Affordance function enabled
- 10 years life time design without replacement of spare parts
- Li-On battery technology
- Same accessories for Exit and Safety luminaires
- Single enclosure with wall/ ceiling with pictogram set.
- ENEC approved: In accordance with EN60598-2-22



Matrix CGL+

- Especially made for Adaptive Evacuation (AE),
- Li-On battery technology with 3 hrs duration
- Matrix luminaire can adjust the direction of the arrow it displays to direct people to the safest possible escape route in an evacuation, or block access to unsafe area.
- The signage can be changed via a switching contact at the luminaire connected to a smoke detector or panic switch or it can be programmed and controlled via AE CGLine+ system.
- Available with IP42 and IP65 ingress protection
- ENEC approved: In accordance with EN60598-2-22



GuideLed DX/DXC

- Especially made for Adaptive Evacuation (AE),
- The signage can be changed via a switching contact at the luminaire connected to a smoke detector or panic switch.
- Displays a red 'X' to signify an area as closed or blocked
- Connection to Eaton's Adaptive Evacuation system AE-CU
- Very good perceptibility on account of high luminance of the white contrasting colour
- The signage can be changed via a switching contact at the luminaire connected to a smoke detector or panic switch or it can be programmed and controlled via AE-CU
- ENEC approved: In accordance with EN60598-2-22



BeamLED

- Especially made for Adaptive High I ux luminaire with con-figuration of one / two / four directional LED lamp head (s).
- Variants of 250lm, 500lm, 1.000lm and 2.000lm depending number of light heads.
- E-focus programming: Narrow and Wide light distribution, programmable by the user/installer.
- One product applicable for Escape Route or Open area illumination.
- New modern and exible / modular design,
- wall mounted or recessed (via accessory). Grids available for increased protection.
- IP65, IK07 high degree of protection



GuideLED Cinema

- Specially designed for operationally darkened rooms, e.g. cinemas, dimming is possible during film screening
- High luminance of the white contrast-ing colour > 500 cd/m² in keeping with standard ISO 3864-1 and high uniformity Lmin/Lmax > 0.8 (dimmer switch posi-tion of 100%)
- Dimming can be activated via potential-free switching input
- Minimum service requirement due to high service life of the LEDs (50 000 hours).
- Fulfills the EN1838 in dimming mode at > 3% dimming setting
- Latest LED technology with design life >50,000 hrs
- Available for 20m and 30m viewing

Emergency lighting



CGLine+ Touchscreen Controller

- Centralized diagnostic system for self-contained luminaires
- 10,1' Touchscreen IPS display with WIN10
- Wall-mounted housing
- Monitoring upto 800 self-contained luminaires in 4 channels
- Cyber Security tested
- Webserver access and emails dispatch



CGLine+ compact Web Controller

- Cost effective for Small & Medium Scale installations
- 3,5' TFT screen and keypad
- 287 x 203 x 60mm (H x W x D)
- Monitoring upto 160 self-contained luminaires in 2 channels
- Wall-mounted housing
- Cyber Security tested
- Webserver and emails dispatch



Eaton's Cybersecurity

For even more cybersecurity and peace of mind

- Resilience against cyber-attacks is critical.
- Our system has been updated to be compliant with the rigorous Eaton cybersecurity policy. Main visible changes are:
- Web server encryption - from http to https



VisionGuard –

The Clever Visualization System

- Full visualization, control and configuration up to luminaire level
- Multi-user operation through web-based client/server structure
- Independent parallel access from up to multiple PC workstations
- Dongle Free Software Licensing
- State-of-the-art web-based dashboard design with widgets
- Responsive web design
- Switchable day/night mode
- Detailed e-mail functions with status e-mailing and alarm e-mailing
- Extended printing functions
- Alarm list and test book function with filter option
- Cyber security checked

Fire & PAVA systems

DAU500

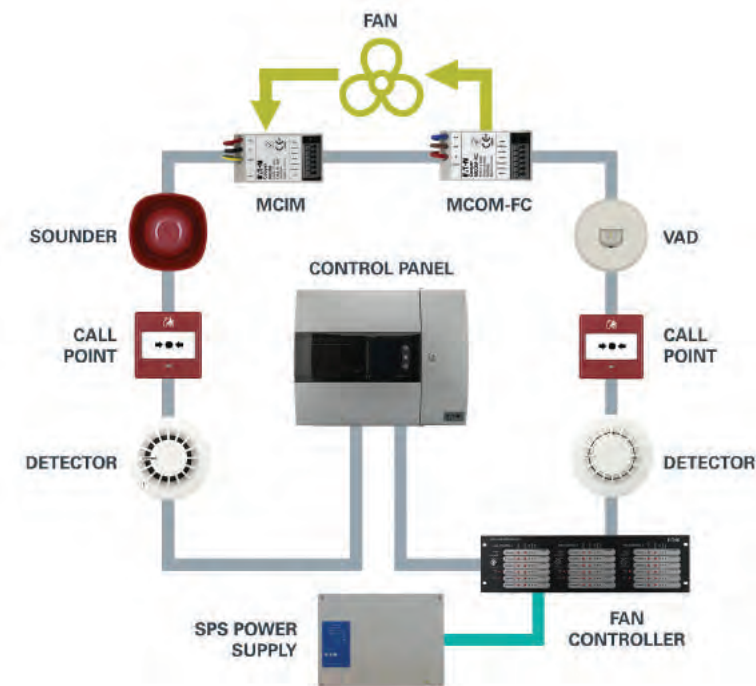


Main Features:

- Powerful
- All-in-one
- Wall mounted Voice Alarm solution
- Network ready
- Maximum power of 600 watts per DAU500
- Integrated battery charger
- Internally located battery mounting
- Up to 16 'slave' units per DAU500
- Microphones / GPIO Units / Multiplexers
- Up to 255 Units can be linked over dedicated cable
- Can process up to 2 concurrent audio channels
- This will permit broadcasts from any location to any combination of selectable zones
- Background Music Input (BGM)

Fire & PAVA systems

UL & EN Intelligent addressable systems



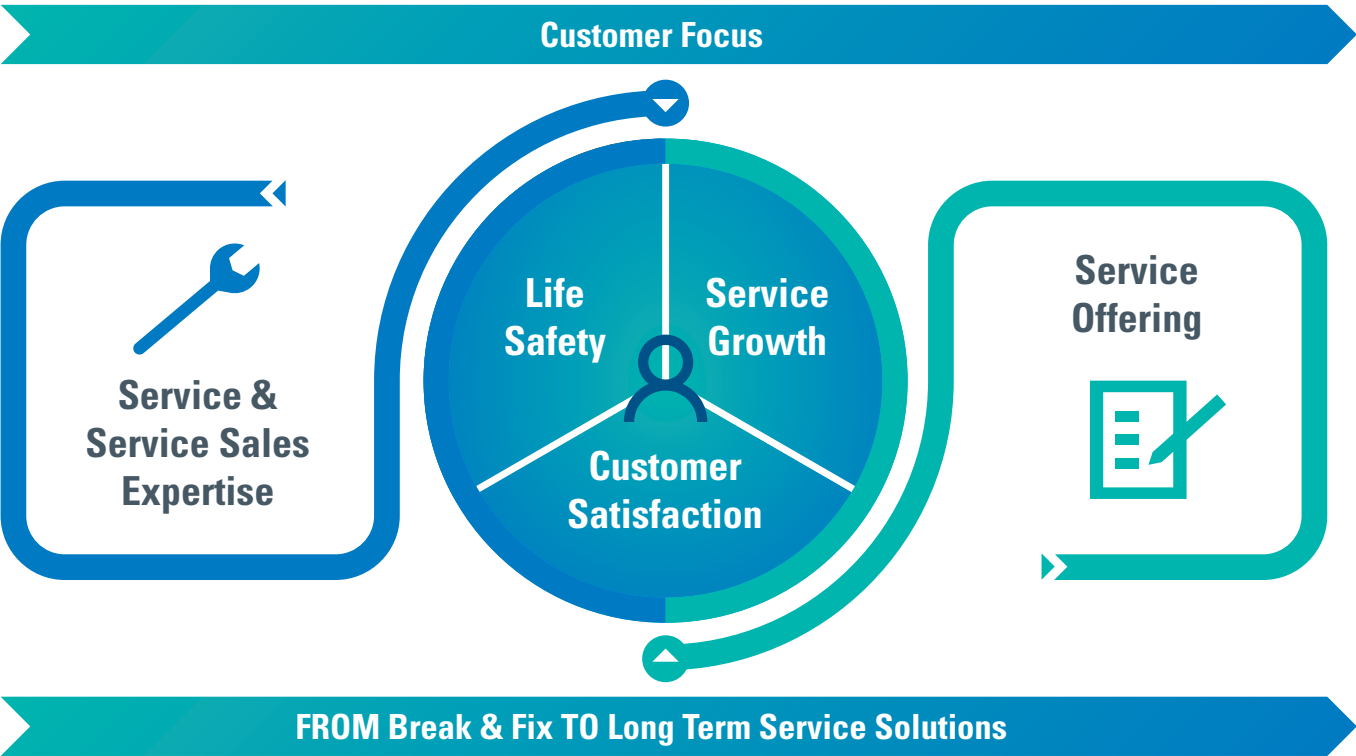
Main Features:

- Large versatile touch-screen user interface
- 2 or 4 Class A Style 7 SLC loops
- Event history buffer (9,999 events) with date/time stamp
- 4 Notification appliance circuit (NAC's) outputs
- Dedicated alarm, trouble, AC trouble relays
- Integral short circuit isolators
- Up to 200 addresses per loop
- Full network capability up to 126 panels
- Supports a comprehensive range of soft addressing modules and devices for greater flexibility in design
- Menu driven graphical user interface for ease of operation
- Reduced commissioning time through soft addressing and auto learn functions
- Programming and trouble shooting time minimized by using a range of features such as auto config, walk test, system detail menus

Eaton Life Safety Services

Eaton’s Service Strategy for Life Safety products represents **proactive** approach in addressing our customers’ needs by bringing together wing to wing service solutions to ensure **LIFE SAFETY** in the moment that matters.

Through the **Trust** that we build with our partners in Middle East, we ensure **Reliable, Efficient and Safe** service solutions.



In Eaton, we put our customers’ needs first in defining our service solutions and offerings. Through relentless focus on our customers, we transform traditional service approach from reactive to proactive.

Main drivers of our service approach are as follows:

Reliability: Maintain vital operations with steady, high-quality power every minute of every day

Safety: Reduce hazards with safety conscious design and installation and provide products and information that help people recognize and avoid danger

Efficiency: Reduce Operating costs and improve customer’s financials with effective energy management and maintenance strategies. Improve return on investment by providing products to work faster and keep it working longer.

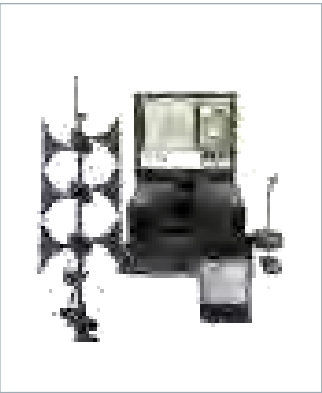
Eaton Life Safety Services

The Eaton Life Safety Services portfolio offers customers dealing with emergency preparedness and regulatory compliance a **reliable, certified and efficient** solution to address the challenges they face while pushing to meet NFPA 101 (Life Safety Code) and other building standards to provide **Maximum Safety** Level.

Unlike competitors, our portfolio offers customers solutions that integrate with their existing facilities to create **aesthetically** appealing spaces, **centralized methods** to meeting regulatory requirements and the confidence that they are backed by Eaton's **advance service and support solutions** and organization as they grow.

Eaton Life Safety Portfolio offers:

- Maximum Safety Level
- Aesthetical & State of Art Products
- Up to 50% energy savings by Upgrade Solutions
- Remote Monitoring for System Health Check
- Advanced Service Solutions
 - Site survey, remote & onsite support, preventative maintenance, technical training, Upgrade & Fit-out

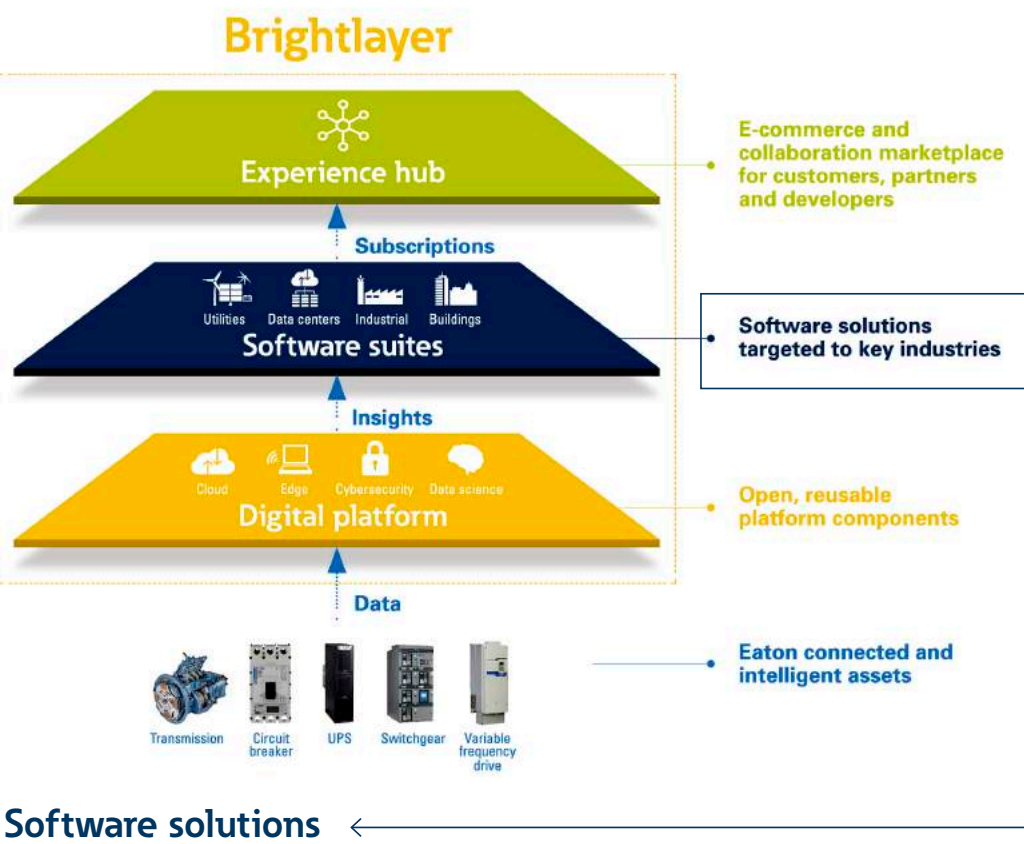


Digital Offerings

Brightlayer enables you to leverage data and insights to drive operational value and focus on what matters.

With Brightlayer, we've taken our more than 100 years of industry expertise and developed a foundation for leveraging data to provide insights that matter to you.

No matter how you want to drive digital enablement, Brightlayer lets you access data, insights and digital solutions to best meet your business needs. It all starts with your assets and the data they can provide you. We're focused on helping you capitalize on the data and insights from those assets to drive operational value.



Software solutions

 <p>Brightlayer Utilities suite Enable uptime and operational efficiency of complex power grids</p>	 <p>Brightlayer Industrial suite Reduce downtime and improve energy – efficiency for critical industrial assets</p>
 <p>Brightlayer Data Centers suite Effectively manage a complex IT asset ecosystem for maximum uptime</p>	 <p>Brightlayer Buildings suite Ensure efficiency and security of building operations and infrastructure</p>



What matters to our customers,
matters to us.

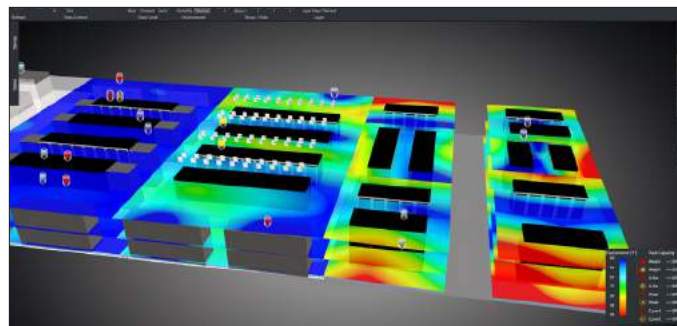


Data center infrastructure management application Visual Capacity Optimization Manager (VCOM)

VCOM, Eaton's data center infrastructure management (DCIM) platform, provides you with valuable information to make better business decisions. The HTML5-based platform features capabilities designed to reduce data center operational expenses, improve system and application reliability, and mitigate risk through data analysis.

You gain the unique ability to not only easily track usage, utilization, capacity limits and more, but also the advantage of reacting quicker to address any related concerns.

- **Virtualization and monitoring**
View 3D renderings and identify problems at all levels of the data center as well as across the enterprise.
- **Asset management**
Centralize your device data repository and use limitless attribute tracking.
- **Capacity planning**
Use "what-if" scenarios to understand current usage to ensure capacity is present for upcoming projects.
- **Environmental monitoring**
Create real-time thermal imaging profiles of your environment using temperature, humidity, leak detection, door closure and Wair pressure data.
- **Change/workflow management**
Reduce time to deploy and increase accuracy of implementation with fully integrated and native capability to generate projects, tasks and work orders.
- **Multitenancy**
Support more than one customer/user type by presenting separate and distinct data that pertains solely to each tenant.



Visual Capacity Optimization Manager

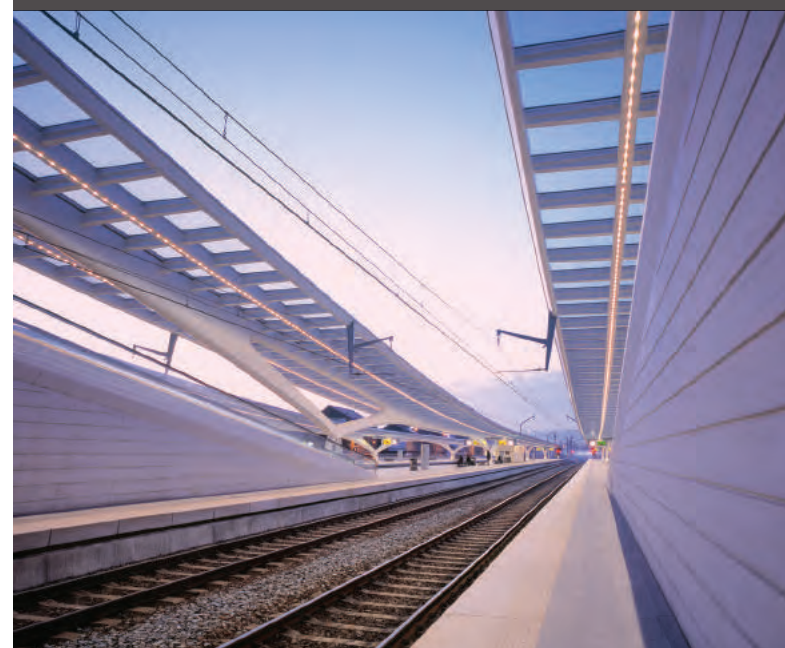
Learn more at Eaton.com/VCOM

World Cup Stadiums, Qatar

Powering World Cup stadiums to run smoothly on the world's biggest stage.

Damac Data Center, KSA

Optimizing data center for the digital future in The Kingdom of Saudi Arabia.



Riyadh Metro, KSA

Keeping the world's biggest urban rail project (outside China) safe.

Toshka Water Plant, Egypt

Providing Medium-Voltage solutions for one of the largest water treatment plants in the region.

What matters to our customers,
matters to us.

What matters to our customers,
matters to us.



New Airport Terminal, Kuwait

Supplying full Eaton electrical portfolio for the new terminal development in Kuwait.



MUVI cinemas, KSA

Powering a network of cinemas in the Kingdom of Saudi Arabia with low-voltage products and solutions.



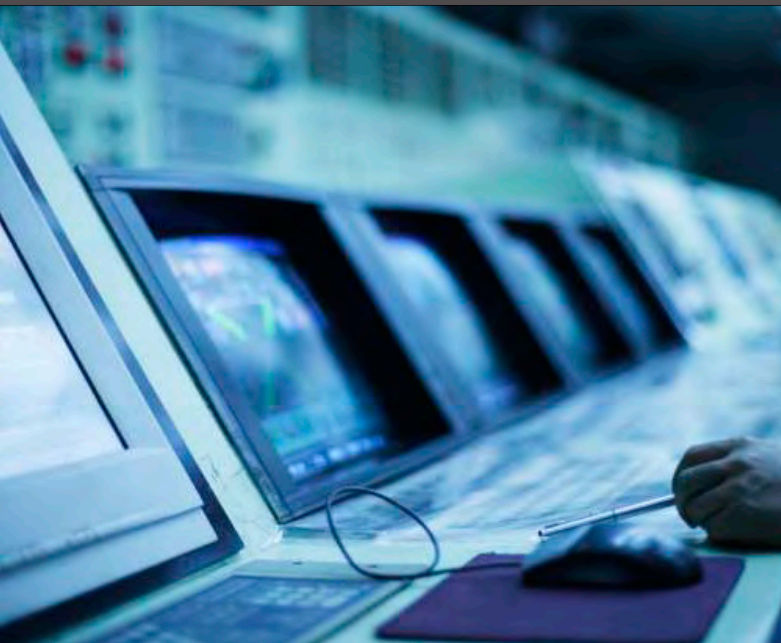
BAPCO Modernization Program, Bahrain

One of the largest project in the history of Bahrain, supplied a great variety of Eaton products and solutions.



Mahawi Building Abu Dhabi, UAE

Supplying Eaton electrical portfolio for government building in the capital of the UAE.



Arab African Bank, Egypt

Powering one of the largest banking institutions in Egypt.



Anantara Resort RAK, UAE

Enabling energy to a popular tourist destination in the UAE.




UCCMA Pharmaceutical and Vaccine Plant, Egypt

Supplying full Eaton electrical portfolio for the factories and central chilled water plant.



Sun City Mall, Egypt

One of the latest landmark project in Egypt where full Eaton switchgear portfolio was supplied.



We make what matters work.*

*Everything we experience in our modern world is made possible by power. Planes. Hospitals. Factories. Data centers. Vehicles. The electrical grid. Every day, all around the world, people depend on technology, transportation, energy and infrastructure to live, work and thrive. And the companies behind them depend on Eaton to solve some of the toughest power management challenges on the planet. Because we never lose sight of what matters. And it's our job to make sure it works.

For more information, visit www.eaton.com/ae

UAE

Middle East Headquarters

National Industries Park – Jebel Ali (South)
P.O. Box 261768
Dubai, United Arab Emirates
Tel: +971 4 8066100
Fax: +971 4 8894813

Saudi Arabia-Al Khobar

Al falak Building, Albandariah District,
AL Khobar, Saudi Arabia,
PO Box 31952
Tel: +966 1 38825680
Fax: +966 1 38825732

Saudi Arabia-Dammam

77 Cross, 20 Street
Dammam 2nd Industrial City
Dammam
Saudi Arabia
Tel.: +966 3 812 2236

Saudi Arabia-Riyadh

Sahab Tower, 4th Floor, Office No. 27/28
King Abdullah Street,
Al Mughrazat District, Riyadh
Telephone: +966 11 4602275
Fax: +966 11 4602291

Kuwait

Mazaya Tower 3
Floor 6, Khalid Ibn Al-Waleed Street
Sharq, Kuwait
Tel: 00965 22050067 / 00965 22050068
Fax: 00965 22050069

Lebanon

Sin El Fil, Saydet Al Wardiyeh Street
Beirut Symposium building
2nd floor, Office 2A
Tel/ Fax: +961 1 494711

Oman

206/7, Maktabi Building,
Near Zakher Mall, Al Khuwair
P.O. Box 1982, PC 111 CPO, Oman.
Tel: +968 24391973
Fax: +968 24483801

Jordan

Amman-Mecca & Madina streets
Intersection
Al-Haramien intersection.
Al Hajar Al Aswad Complex,
3rd floor - Office 306
Tel: + 962 6 5542538

Qatar

Financial Square Building
Building 2, Floor 2, Office 3
C Ring Road, Doha Qatar
Tel: +974 44674273
Fax: +974 44667134

Egypt

Point 192 Building,
192, Teseen South Street, New Cairo City,
Cairo, Egypt
Tel no.: +202 2538 3151
Fax no.: +202 2538 3152

Changes to the products, to the information contained in this document, and to prices are reserved; so are errors and omissions. Only order confirmations and technical documentation by Eaton is binding. Photos and pictures also do not warrant a specific layout or functionality. Their use in whatever form is subject to prior approval by Eaton. The same applies to Trademarks (especially Eaton, Moeller, and Cutler-Hammer). The Terms and Conditions of Eaton apply, as referenced on Eaton Internet pages and Eaton order confirmations.

Eaton

Middle East Headquarters
National Industries Park – Jebel Ali (South)
P.O. Box 261768
Dubai, United Arab Emirates

© 2023 Eaton
All Rights Reserved
Publication No. BR090014EN
September 2023

Eaton is a registered trademark.

All other trademarks are property of their respective owners.



Powering Business Worldwide