

# ASENWARE LTD

*Only for Fire Safety*

# Content

**01** Well-known Brand

**03** Warehouse And  
Standard Package

**05** Popular Products

**02** Professional Production And  
Quality Control

**04** One-stop Solution

**06** Comprehensive Services



The background of the slide features a series of concentric, wavy lines that create a sense of depth and movement. These lines are light gray and curve around the central text, framing it elegantly.

# 01

PART ONE

## **Well-known Brand**

ASENWARE is a fire alarm system and fire suppression system manufacturer and a fire safety solution provider since 2005.

## 20-year Fire Alarm System

Manufacturer & Turnkey Solution Supplier



Conventional  
Fire Alarm  
Series



FM200  
Fire Suppression  
System



Packaged  
fire pump  
system



Two Wire  
Addressable  
Fire Alarm Series



## Introduction

Established in 2005 and currently trading in over 100 countries worldwide, ASENWARE is a fire alarm system and fire suppression system manufacturer and fire safety solution provider.

Our commitment to quality is underlined by various certificates, such as ISO9001, UL, LPCB, TUV, INTERTEK certificates.

With over 200 employees, ASENWARE designs and manufactures the best fire safety products with a professional R&D team and advanced production equipment.

## Website & Video

### Website:

[www.asenware.com](http://www.asenware.com)

[www.asenwarefire.com](http://www.asenwarefire.com)

### Company Introduction Video:

[https://www.youtube.com/watch?v=NZE6LcrG\\_yo&t=1s](https://www.youtube.com/watch?v=NZE6LcrG_yo&t=1s)

## Logo Description



### **A — A class, first level**

Promising customers advanced products and appropriate services.

### **SEN — Sensor, detector**

Sensing market needs, providing customers with superior sensors, detectors, and other standard products.

### **WARE — Hardware/software, warehouse**

Owning a professional R & D team and wholesome warehouses.



### **G — Guarantee**

**U — You**

**T — To**

**A — A class**

We guarantee customers to A-class products, services, and solutions, and keep creating product value out of expectation.



## Vision

We firmly believe that quality is the cornerstone. We will always maintain the quality of our products. We will always keep our promises to our customers, offering products, services, and solutions out of expectation. We are committed to designing and producing the best fire safety products, reducing fire risk, and helping the world become safer.

## Mission

To focus on providing high-quality products, services and solutions to customers. To create value for our customers.







**Mr. Strong Wang**

- **1992 - 1996** Graduated from Harbin Institute of Technology
- **1996 - 1998** Worked as computer engineer in Harbin Suburban Rural Electrification Bureau
- **1998 - 2000** Worked as Huawei electrical technical support engineer
- **2005. 5 - Now** Founded ASENWARE
- **Currently** The president and chief product manager of ASENWARE

We must remember that quality is the cornerstone of our existence, and we will never reduce the quality for any reason.

— 

## Key Figures



2005

ASENWARE Founded



200+

Employees



100+

Exporting Countries



1000,000+

Successful Projects



50+

Global Agents





### China Marketing Center

Shenzhen Asenware Test & Control Technology Co., LTD

**Address:** D-26H, Shihong Building, No.63 Fanshen Road, Baoan District, Shenzhen, Guangdong, China -518101  
**Tel:** 0086-13922805301

### China R&D and Supply Chain Center

Zhongshan Guta Fire Equipment Technology Co., LTD

**Address:** 4F, 10#, Xingye Road, Huoju District, Zhongshan, Guangdong, China  
**Tel:** 0086-13922805301

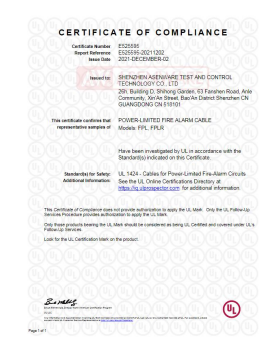
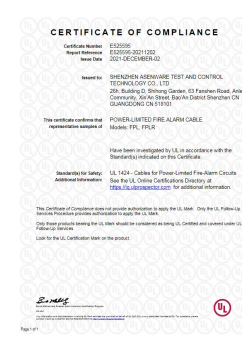
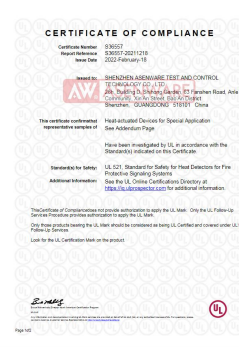
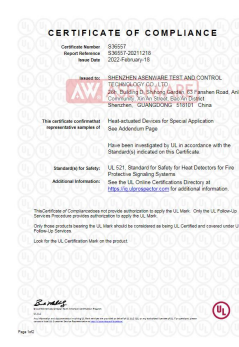
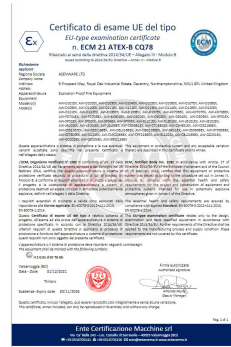
### UK Marketing Center

ASENWARE LTD

**Address:** 6 Prospect Way, Royal Oak Industrial Estate, Daventry, Northamptonshire, UK -NN11 8PL



# Product Certificates

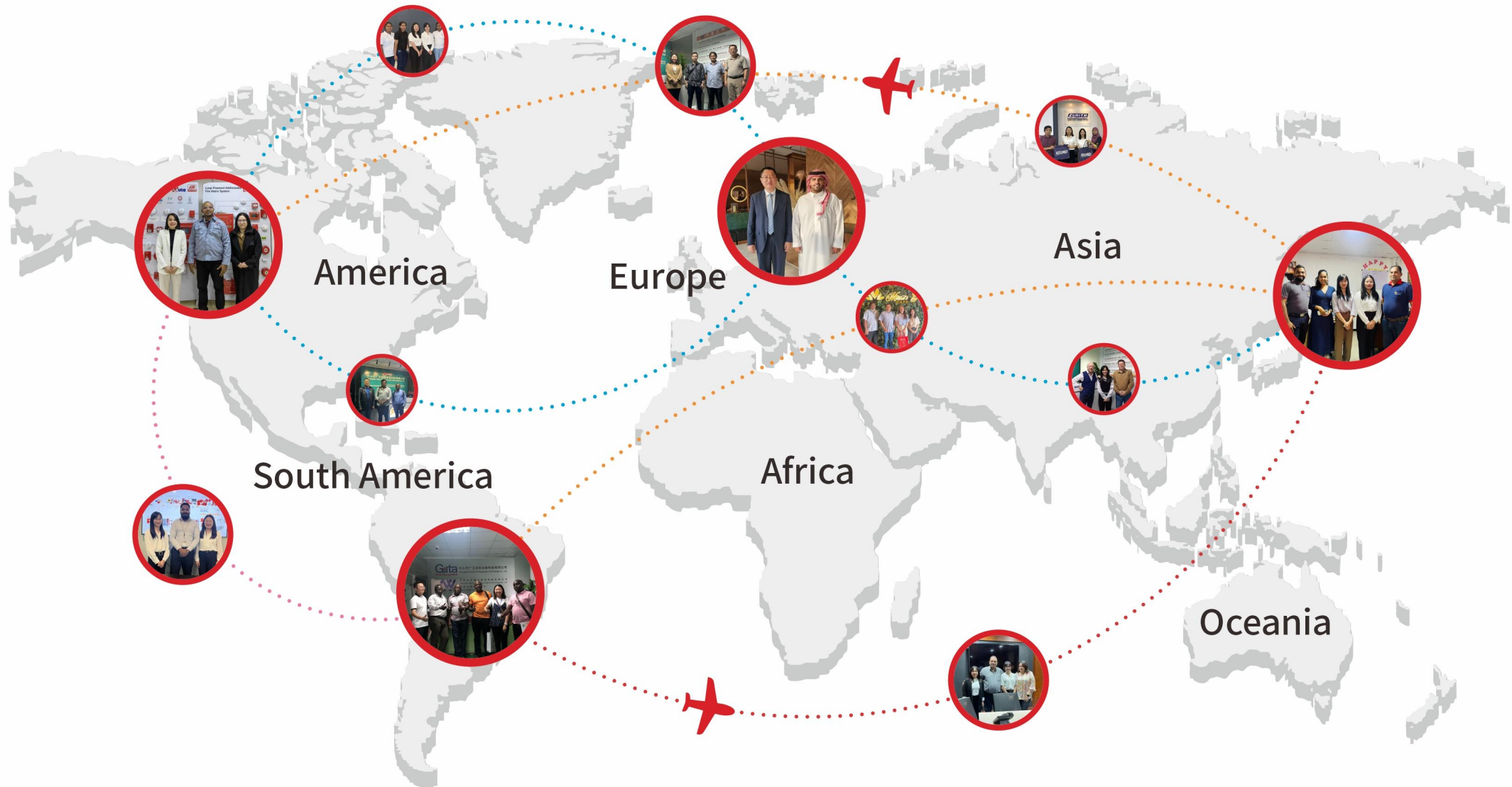




## Partners

AW ASENWARE

Guta



# Partners





# Projects

## Asian projects

- Philippines CRH ABOITIZ CEMENT FM200 Project



- Asenware fire alarm system used in Best Western Hotel Cox Bazar Bangladesh



## South America



Ecuador  
Tablicon Planta



Iquique, Chile  
Quebrada Blanca

Santiago, Chile  
Isesa

## Africa



Nigeria  
ENUGU ElectricityL Distribution  
Company

Paraguay  
Diagonal Residence project



Kenya Kisumu  
Maranda High School

Togo  
Jess house perfumery

## Africa projects

- Ciudad Del Este, Paraguay Diagonal Residence Project



- Addressable Fire Alarm system used in Nigeria CSS Co.,Ltd Project



## South & North America projects

- Guatemala HQ Fontabella Building project



- Rubis gas Refinery plant in Jamaica kingston West Indies project



>> [View more on our website](#) <<





20+ buildings using  
Addressable fire alarm system AW-FP200

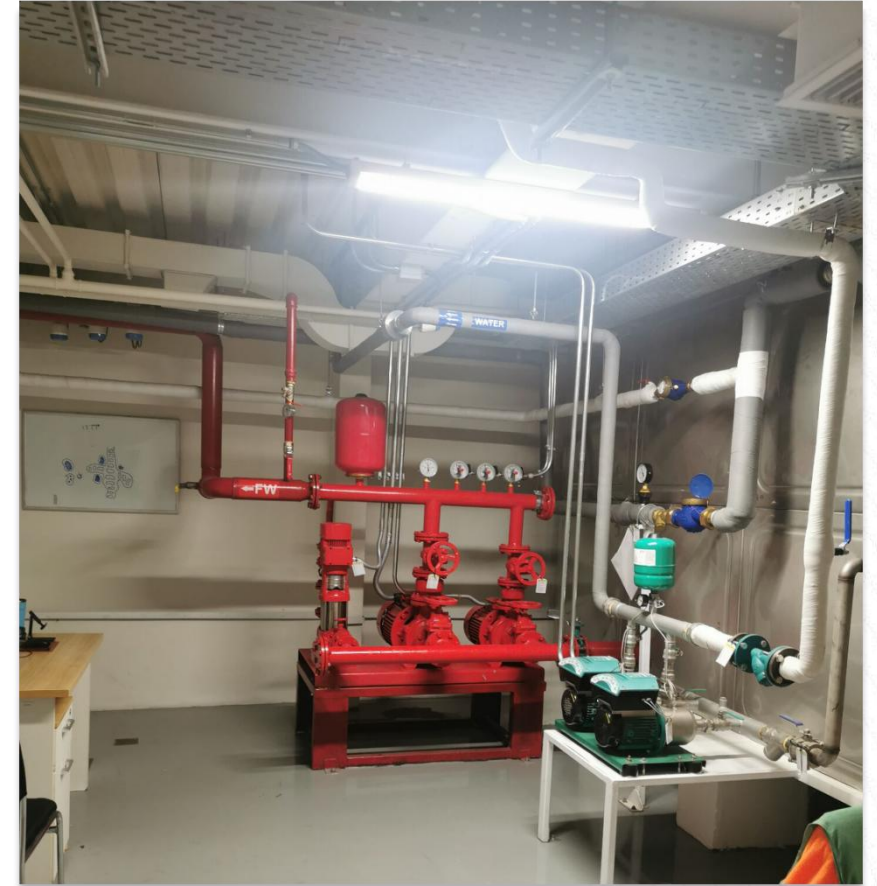
>> [View more on our website](#) <<





## Linear Heat Detection System Project





Fire pump in building





An apartment with 30th floor using  
Addressable fire alarm system AW-FP200





One-stop Solution Fire Alarm and Fire Fighting Product

>> [View more on our website](#) <<



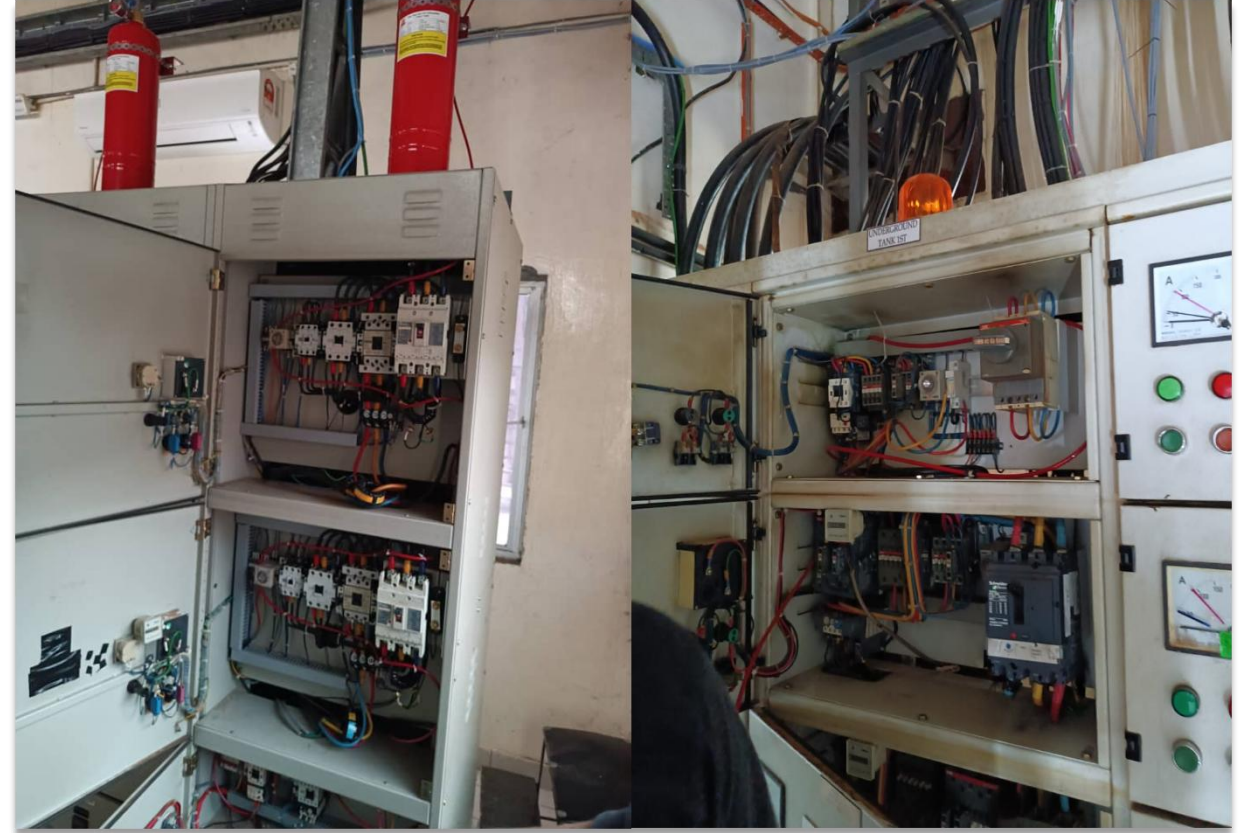


Project name: YANGON GENERAL MYANMAR HOSPITAL  
Asenware AW-FP300 Addressable fire alarm system LPCB approval



Hospital uses  
FM200 hanging type gas suppression system





Fire detection tube suppression system





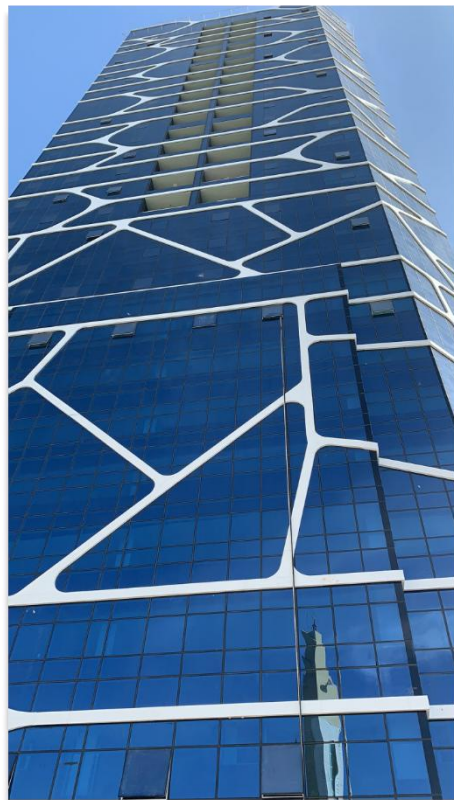
Five Stars Hotel-Best Western Hotels in Bangladesh





The airport using  
Addressable fire alarm system AW-FP300





The tower using  
Addressable fire alarm system AW-FP300



Aletqan Tower using  
Addressable fire alarm system AW-FP300





Explosion-proof flame detector



One of the biggest supermarkets uses 50+ using  
Addressable fire alarm system AW-FP2188



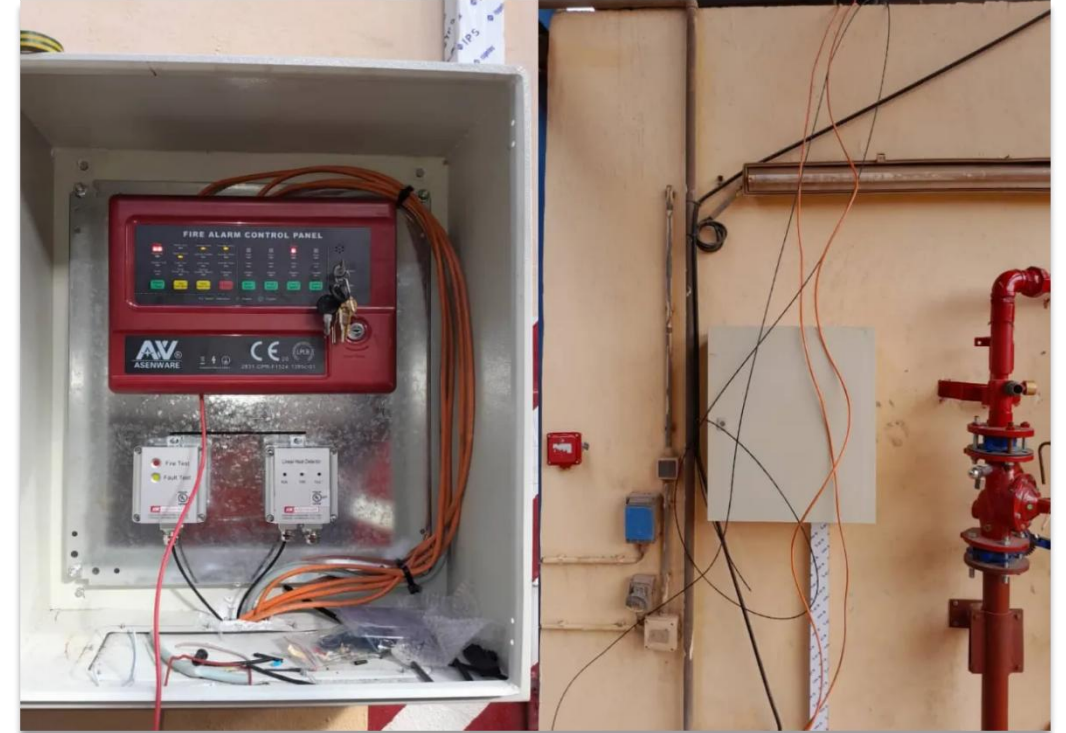


Explosion-proof gas detectors



IP Technology building using  
Addressable fire alarm system AW-FP200





Explosion-proof device





Warehouse uses beam smoke detector and  
Addressable fire alarm system AW-FP300





Power station uses  
CO<sub>2</sub> gas fire suppression system

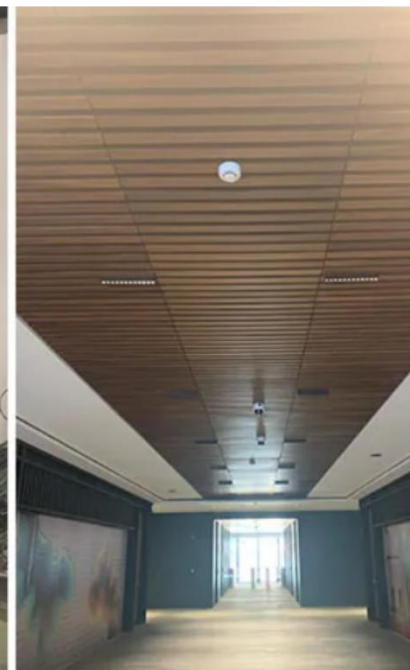


An Office using  
Conventional fire alarm system AW-CFP2166





The University - UABC using  
Addressable fire alarm system AW-FP200



HQ Fontabella Tower using  
Addressable fire alarm system AW-FP200





Nestle factory using  
FM200 gas suppression system



Famous fabric store using  
Addressable fire alarm system AW-FP200





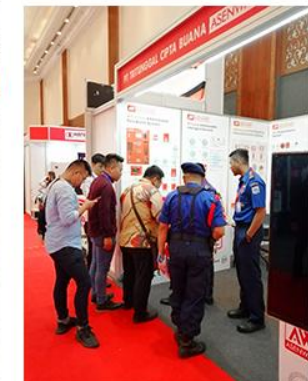
Bussiness building with 23th floor using  
one stop solution products







# Exhibition











02

PART TWO

# Professional Production And Quality Control

ASENWARE guarantees the quality of the products.

# 1 / International production standards

All products are based on ISO9001-2015 certificate.





## 2 / Production Factory

GUTA is the manufacturing factory of ASENWARE.





# 3/ Production Line & Equipment





### 3 / Production Line & Equipment Laser Cutter

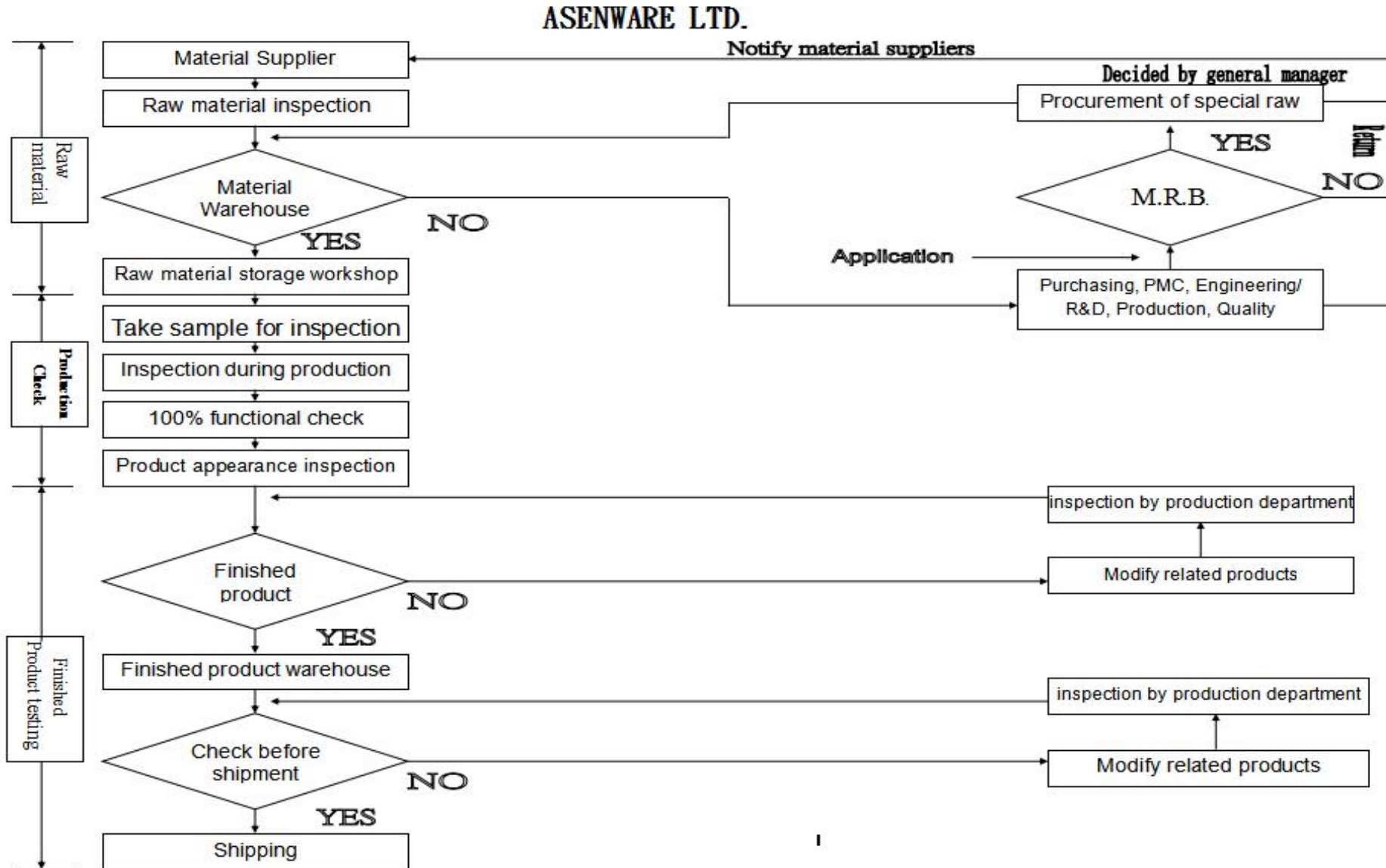
AW ASENWARE

Guta



# 4 / Quality Control

## Quality department workflow





## 5/ Product Quality Inspection During Production Process





## 6 / Product Testing





The background of the slide features a series of thin, light gray concentric curved lines that sweep across the frame from the bottom left towards the top right, creating a sense of motion and depth.

# 03

PART THREE

## **Warehouse And Standard Package**

ASENWARE ensures the intactness of the products.

# 1 / Spacious Warehouses





## 2 / Experienced Warehouse Team

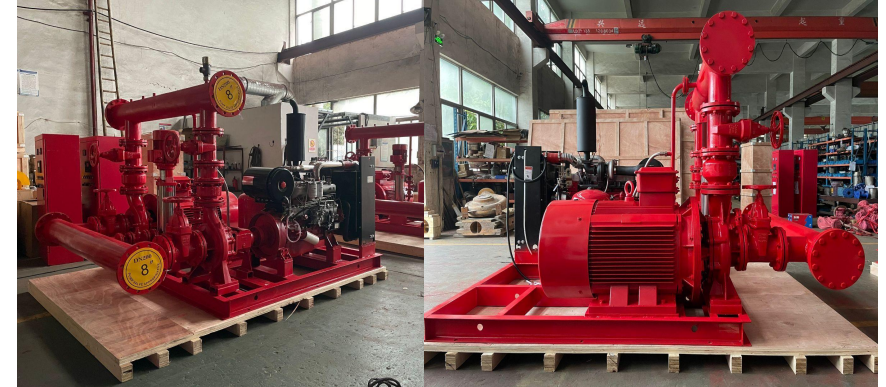


# 3/ Carton-box Fire Alarm Products





# 4 / Wooden-box Fire Fighting Products





# 5 / Shipment

Support shipment by sea / air / express / DDP.







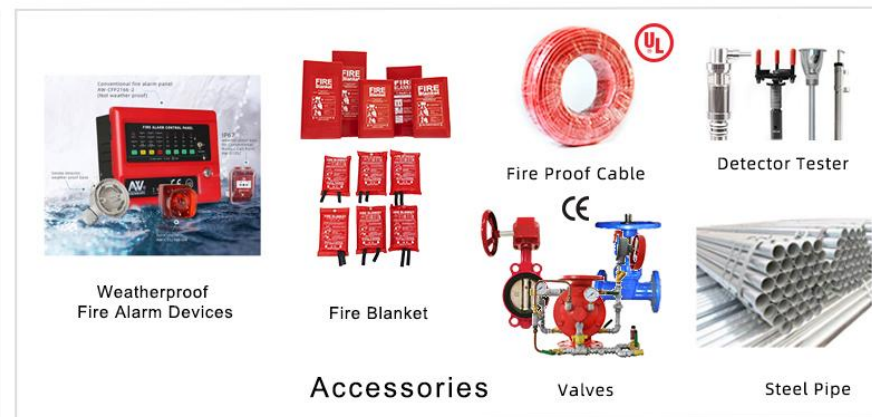
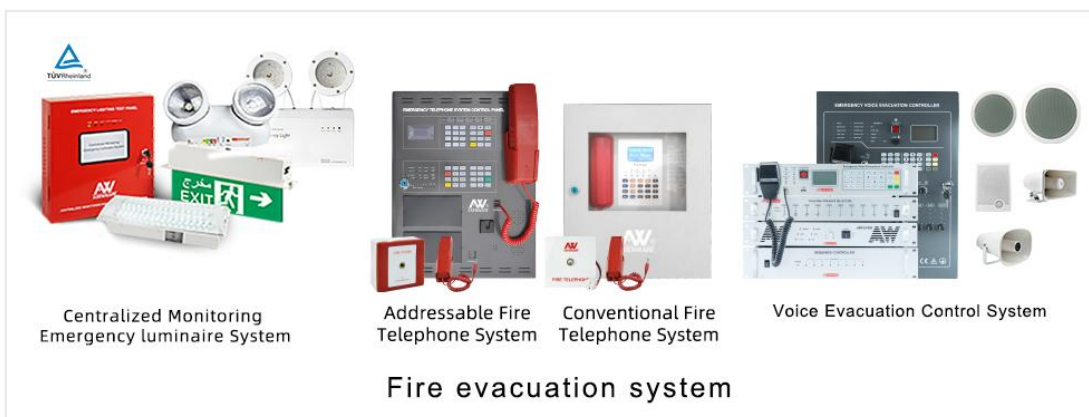
# 04

PART FOUR

## One-stop Solution

ASENWARE focuses on solving customer problems from the beginning to the end of the fire.

## One-stop Solution Provider







# 05

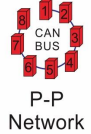
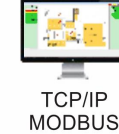
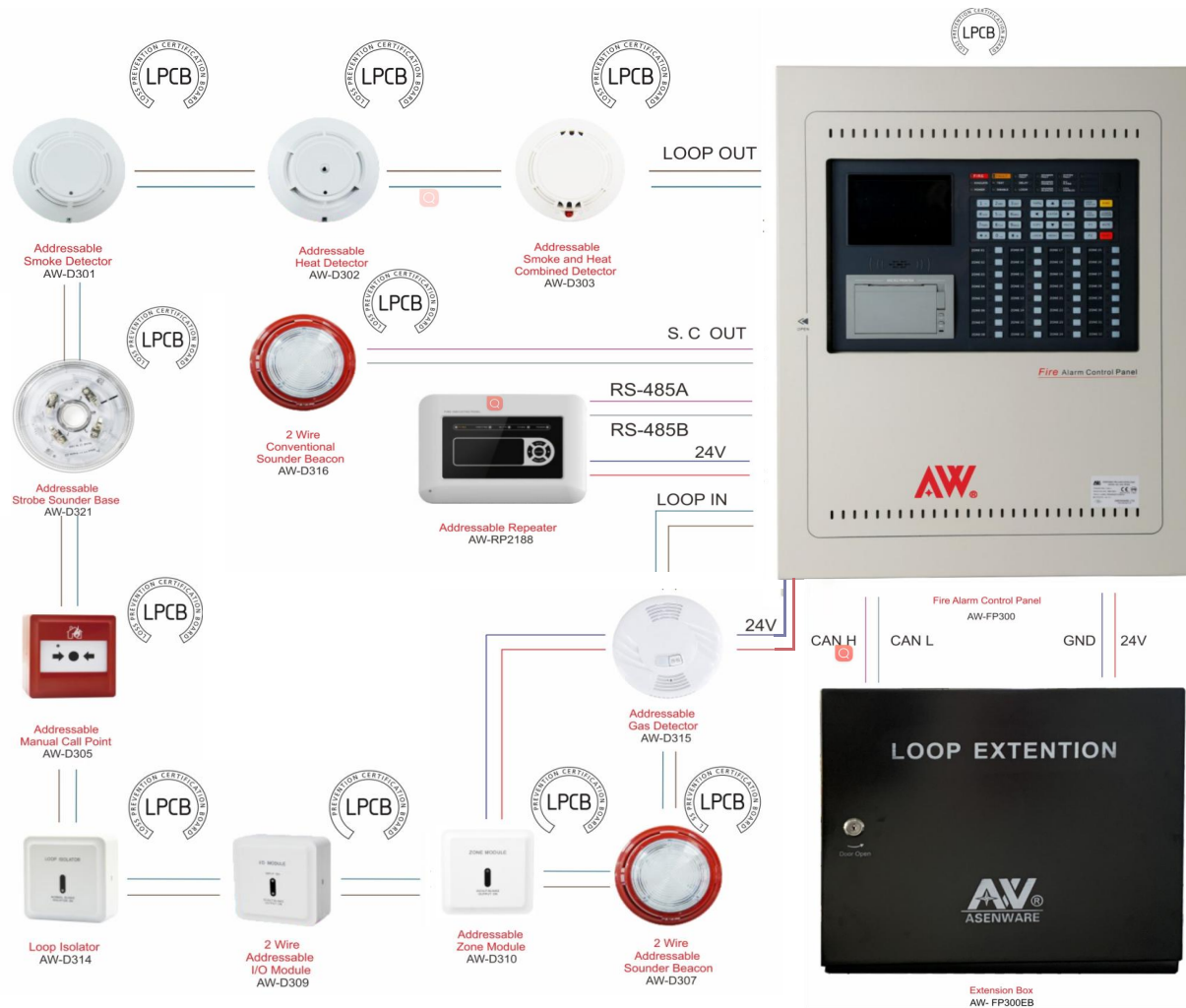
PART FIVE

## Popular Products

The products of ASENWARE comply with international standards,  
meeting customer needs.

# Addressable Fire Alarm System

## FP300 LPCB Addressable Fire Alarm System



### Addressable Fire Alarm Control System



**Addressable sounder beacon waterproof base AW-BS03**

Made of ABS material  
Complies with IP65 rating



**Addressable Fire Alarm Control Panel AW-FP312**

- One loop with 120 addressable points
- CAN network 20pcs panel
- Graphic monitor





# Addressable Fire Alarm System

## FP300 LPCB Addressable Fire Alarm System



### Applicable scene



Hospital



Supermarket



Building



Office building



Factory



School

### YOUTUBE videos:

LPCB Approved Addressable Fire Alarm System Introduction

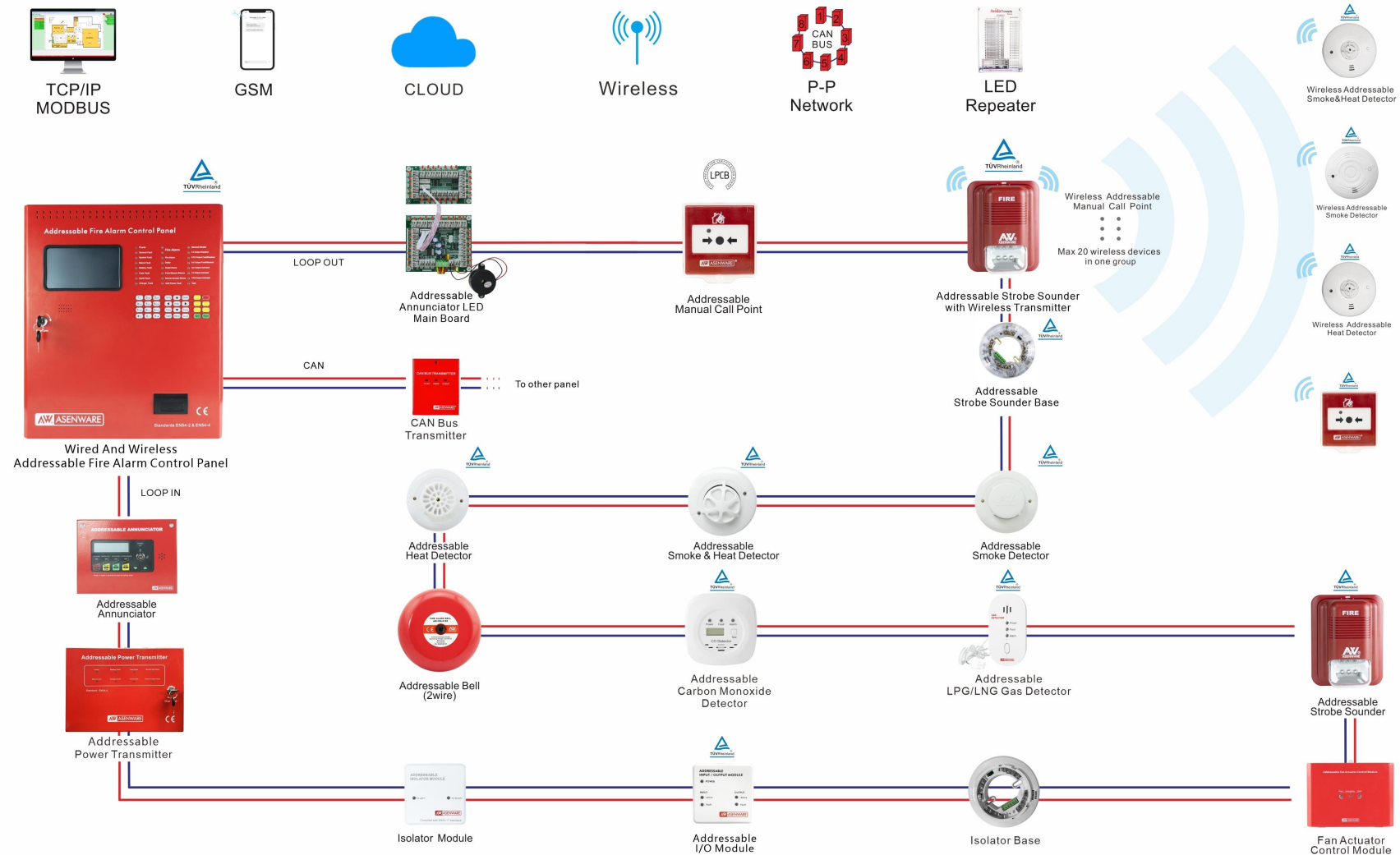
<https://youtu.be/OnpWE39195s>

This Video Helps Us Familiarize With How The FP300 Addressable Fire Control System Panel Operates

<https://youtu.be/sQnFOPgDuVM>

# Addressable Fire Alarm System

## FP200 Addressable Fire Alarm System





## Addressable Fire Alarm System

## FP200 Addressable Fire Alarm System



- **Panel to panel network** Every panel can reset, silence, and evacuate other connected panels. support to connect with AW-FP128 & AW-FP100 too
- **Wireless** Each loops support 10 wireless group, maximum can connect 1600 wireless devices
- **Multi language** Vietnamese, Spanish, Thailand Russian, French, Portuguese available
- **Loop power supply** The whole addressable loop is two wire only
- **Graphic monitor** available
- **GSM** 4G 10 mobile phone numbers



TCP/IP  
MODBUS



GSM



CLOUD



Wireless



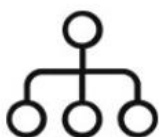
P-P  
Network



LED  
Repeater



7-inch  
color LCD  
touch screen



1 to 8 loop,  
each loop 250 wired  
addressable points



Support wire  
&  
wireless function



Multi  
language

### Applicable scene



Hospital



Supermarket



Building



Office building



Factory



School

### YOUTUBE videos:

How to Wire and Operate AW FP200 Addressable Fire Alarm System

<https://www.youtube.com/watch?v=FN1eQO7BPmY>

# Fire Alarm System

## Global Fire Alarm Graphic Monitoring System



Asenware Global Fire Alarm Graphic Monitoring System

LAN Connected

Graphics Monitoring Settings Configuration Developer About Us Log In/Out Exit

2.168.1.40

Loop : 1 192.168.1.40

Address	Device	Location
2	Smoke Detector	Control Build
3	Manual Call Poi...	Switch Gear
1	Heat Detector	Admin Buildi

Loop : 2 192.168.1.40

Address	Device	Location
2	Heat Detector	Admin Buildi
5	Combined Dete...	Jetty Area
4	Manual Call Poi...	Engine Room
3	Fire Bell	Security Roc
1	Smoke Detector	Office Buildi



CHINA ZONGSAN

- GUTA FIRE BUILDING
  - 1ST FLOOR
    - SALS OFC AREA

ProjectName	AreaName	Device	Date	Time	Status	prdimageFire
-------------	----------	--------	------	------	--------	--------------



### Features

Support LAN and CLOUD mode

Multi Level Management

Automatically send fire or fault events Emails & SMS to the building managers, engineers or concerned person

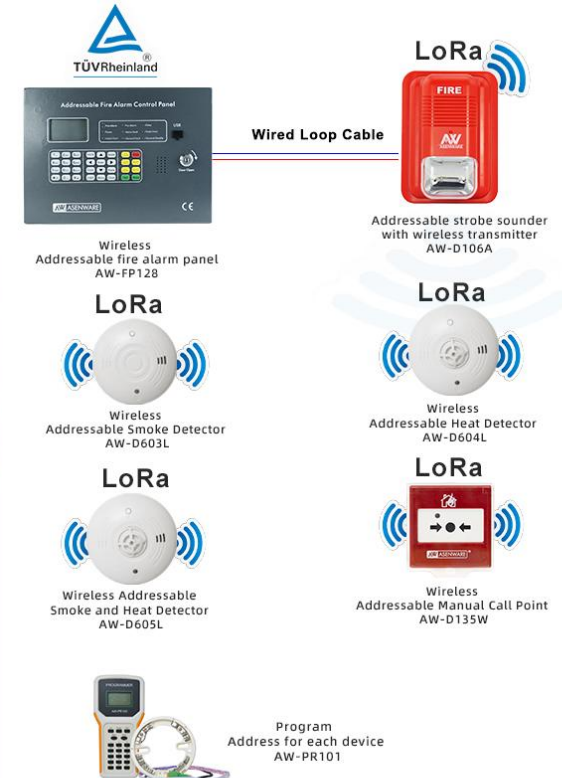
CLOUD mode can monitor all running panels around the world

User-friendly , easy to operate and manage

Aesthetic design while maintaining the simplicity in drag and drop feature for devices to the layout

# Addressable Fire Alarm System

## Addressable Fire Alarm Control Panel AW-FP128



### YOUTUBE videos:

How to Program and Operate AW-FP128 Addressable Fire Alarm System

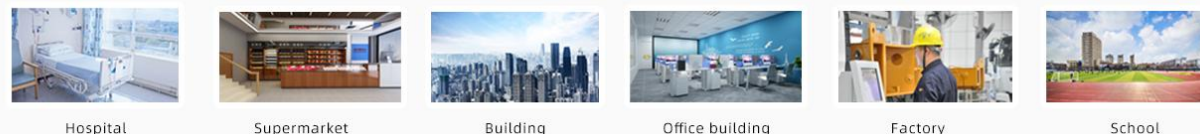
<https://youtu.be/Qj4LE-oT62E>

How to Program & Operate AW-FP128 Wireless Fire Alarm System

<https://youtu.be/rgwNEKe vXzw>



### Applicable scene





# Wireless Fire Alarm System



## WIRELESS FIRE ALARM CONTROL SYSTEM

### Fire alarm control panel AW-FP032

**LoRa**

LoRa  
Technology



Build-in  
10 Years Battery



GSM function  
available



100dB@1m



### Compatible wireless devices



#### SPECIFICATION

Standby battery:	2000mAh 3.7V/ lithium battery
Number of connected devices:	20PCS
The number of mobile phones that can be sent to text:	10
Panel Alarm Horn:	≥100dB@1m
Wireless Working Frequency:	433MHz (418MHz-448MHz)

### Applicable scene



Home



Hotel



Office



Villa



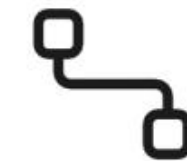
Hospital



Small Store

## Explosion-proof Fire Alarm System

## FP100 Addressable Explosion-proof Fire Alarm System



Addressable  
Explosion-proof  
devices



Ex-Atex Protection  
Level IP65



Easy Installation

### Application Place



Petroleum



Shipbuilding



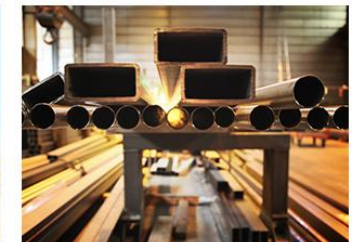
Vehicle manufacturing



Underpass



Fired power plant



Metallurgy



## Conventional Fire Alarm System

## 2166 Conventional Fire Alarm System



## Conventional Fire Alarm Control System



### YOUTUBE videos:

Conventional Fire Alarm Control System Introduction

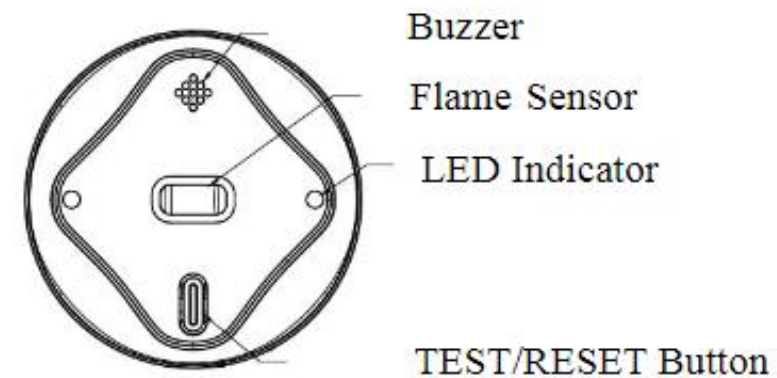
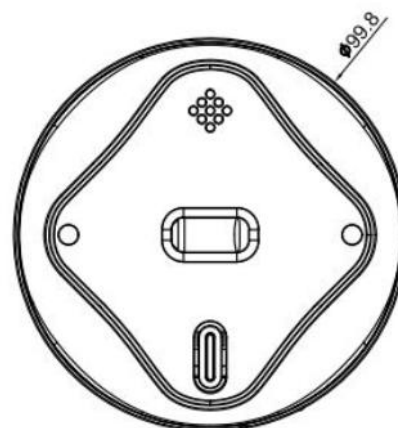
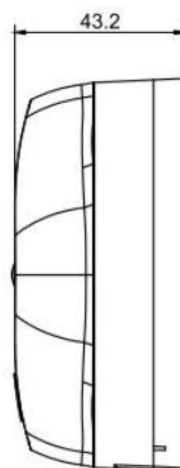
<https://youtu.be/U5ntJKKfyHw>

How To Wire A Complete Conventional Fire Alarm System

[https://youtu.be/X\\_bROOeidx4](https://youtu.be/X_bROOeidx4)



<b>Operating Voltage</b>	ZONE 24V
<b>Operating Current</b>	Monitoring status $\leq 3\text{mA}$ , alarm status $\leq 30\text{mA}$
<b>Spectrum</b>	185-260nm
<b>Sensitivity</b>	Grade 1
<b>Detection Angle</b>	$\leq 120^\circ$
<b>Alarm SPL</b>	$\geq 85\text{dB @3m}$
<b>Operating Temperature</b>	$-10^\circ\text{C} \sim 50^\circ\text{C}$ 5% to 95% RH (non-condensing)
<b>Application</b>	For indoor use only
<b>Standard Number Ref</b>	EN54-10



### Application Place



Petroleum



Shipbuilding



Vehicle manufacturing



Underpass



Fired power plant



Metallurgy



# Beam Smoke Detector

# Infrared Linear Reflex Beam Smoke Detector



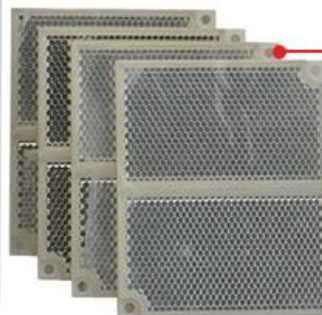
Adjustable sensibility from 1-3 grades



IP30 and IP66 options



Indication lights: Fire, Fault, Test



With 4pcs reflectors

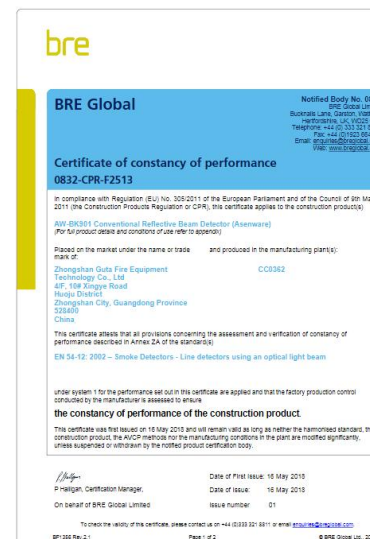
Applicable in airport, shopping mall,  
factory, warehouse, office, hospital etc.



- With digital function
- Adjustable monitor distance from 25-100 meters
- Protective area up to 1400 sqm max.
- PCB board is fully sealed protection technique
- It can self compensating for the influence of dust, vibration and other factors to some extent, which improves the detector's reliability.



LPCB approved



# Wireless Detectors

## Standalone Wireless WIFI Smoke Detector

AW ASENWARE

Guta



Standards



Tuya App



9V DC  
Replaceable



2.4GHz  
Wifi



Low  
battery alarm



**SMOKE  
DETECTOR  
WITH  
WIFI**

[SENSITIVE]

Applicable scene



Home



Supermarket



Hospital



Office building



Factory



School



# Battery Detectors

## Standalone Battery Smoke Detector



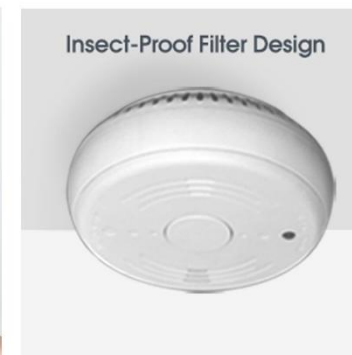
### Automatic alarm

Low battery voltage keep you safe and sound.



### Ultra-Compact Design

Only measuring 105 × 105 x 43 mm, the smoke alarm is so small you can fix it anywhere without taking up too much space. Carry around this portable alarm to protect you while traveling, whether on a business trip or on vacation.



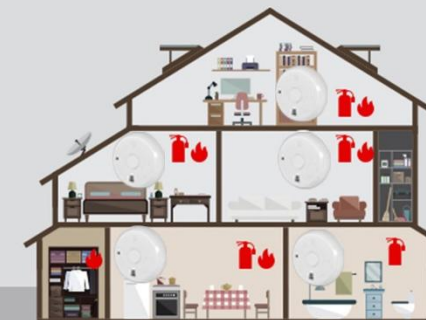
### Insect-Proof Filter Design

An effective insect-proof filter design prevents small insects from entering the alarm and triggering false alarms.



## Application

For indoor use only  
Protect your home from both invisible, odorless, deadly carbon monoxide and fire



## Battery Detectors

## Standalone Battery Smoke Detector & Heat Detector



### Applicable scene



Home



Supermarket



Hospital



Office building



Factory

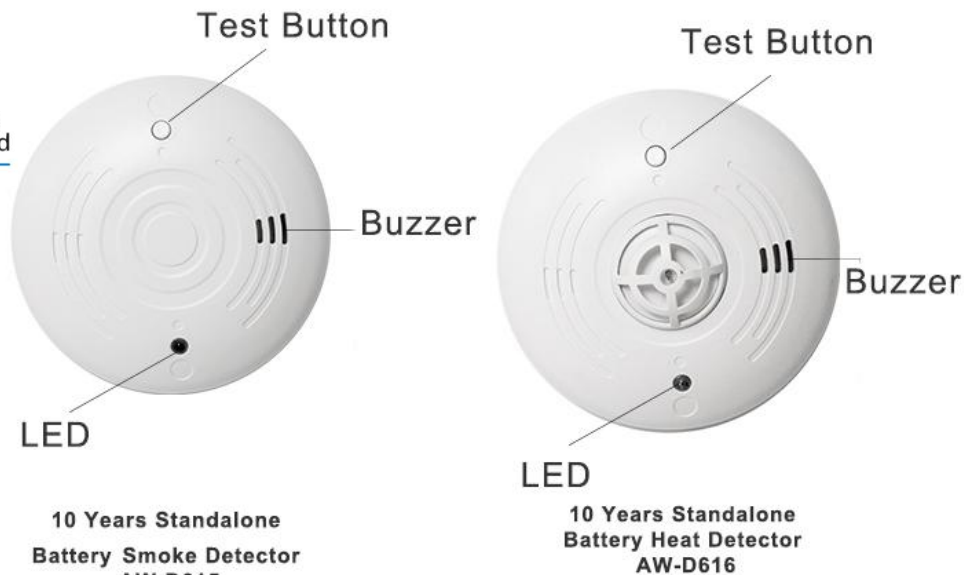


School



## Battery Detectors

## 10-year Standalone Smoke Detector & Heat Detector



### Applicable scene



Home



Supermarket



Hospital



Office building



Factory



School



10 Years  
Lifespan



≥85dB  
@3m



Standards



3VDC  
Battery

## Battery CO Detector

- Lifespan 10 years
- OEM available
- TUV approved
- Blister packaging available



## Wires type CO Detector



Conventional fire alarm panel 4 zone  
AW-CFP2166-4



24VDC Conventional CO detector  
AW-D125C



Conventional  
24V & Battery type



LCD  
display



LED  
warning light



Low  
Battery detected



Detect  
Concentration  
from 50-999 ppm





# Wires type LPG Gas Detector



Conventional fire alarm panel 4 zone  
AW-CFP2166-4  
Conventional fire alarm panel 4 zone



24V DC 4 wire LPG Gas Detector  
AW-D132C-4W



# Fire Alarm System

## 4G GSM Module



Conventional Fire alarm  
Control Panel Series  
AW-CFP2166



Addressable Fire Alarm  
Control Panel  
AW-FP300



Gas Extinguishing Release  
Control Panel  
AW-GEC2169

other brand panel also available



GSM Module  
AW-GSM200



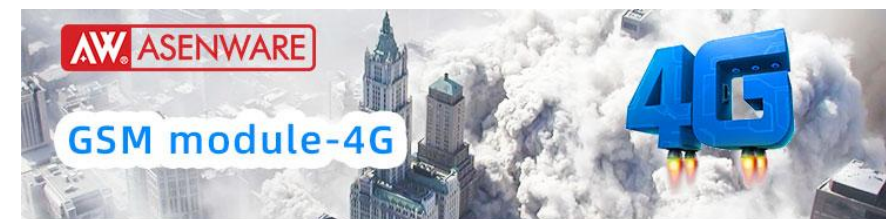
SMS



Anti-  
interference



4G  
Mobile Phone



Addressable Fire alarm control system



Addressable Fire alarm  
control Panel  
AW-FP100

GSM Module  
AW-FP100GSM-2G/4G

Applicable scene



Hospital



Supermarket



Building



Office building



Factory

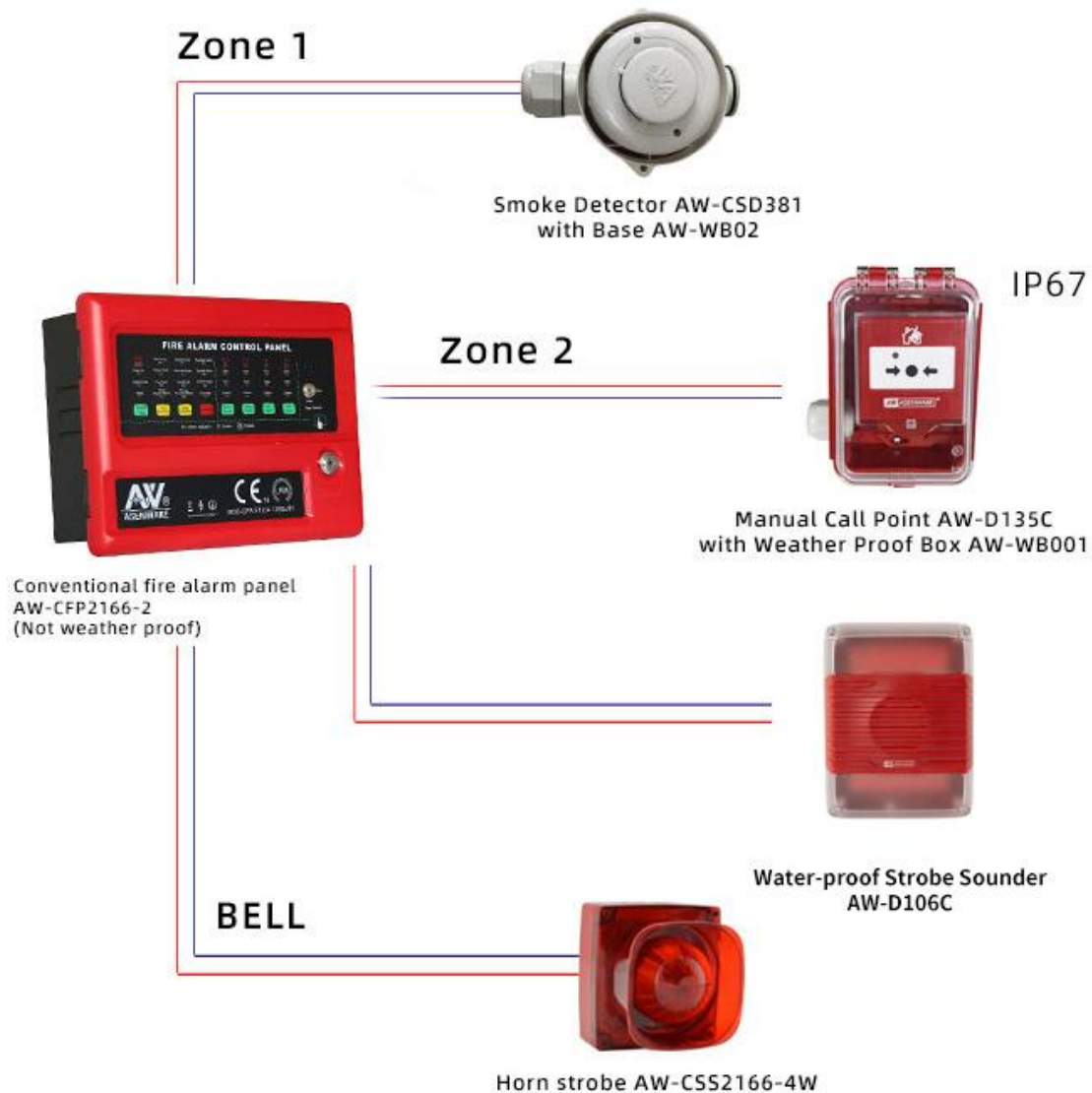


School

## Water-proof Fire Alarm System

## 2166 Water-proof Fire Alarm System

**AW** ASENWARE



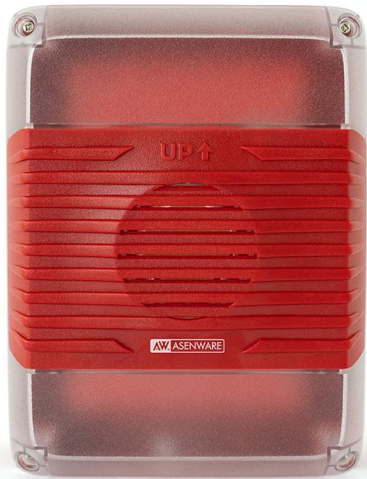


## Water-proof Fire Alarm System

## Water-proof Strobe Sounder AW-D106C



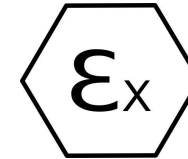
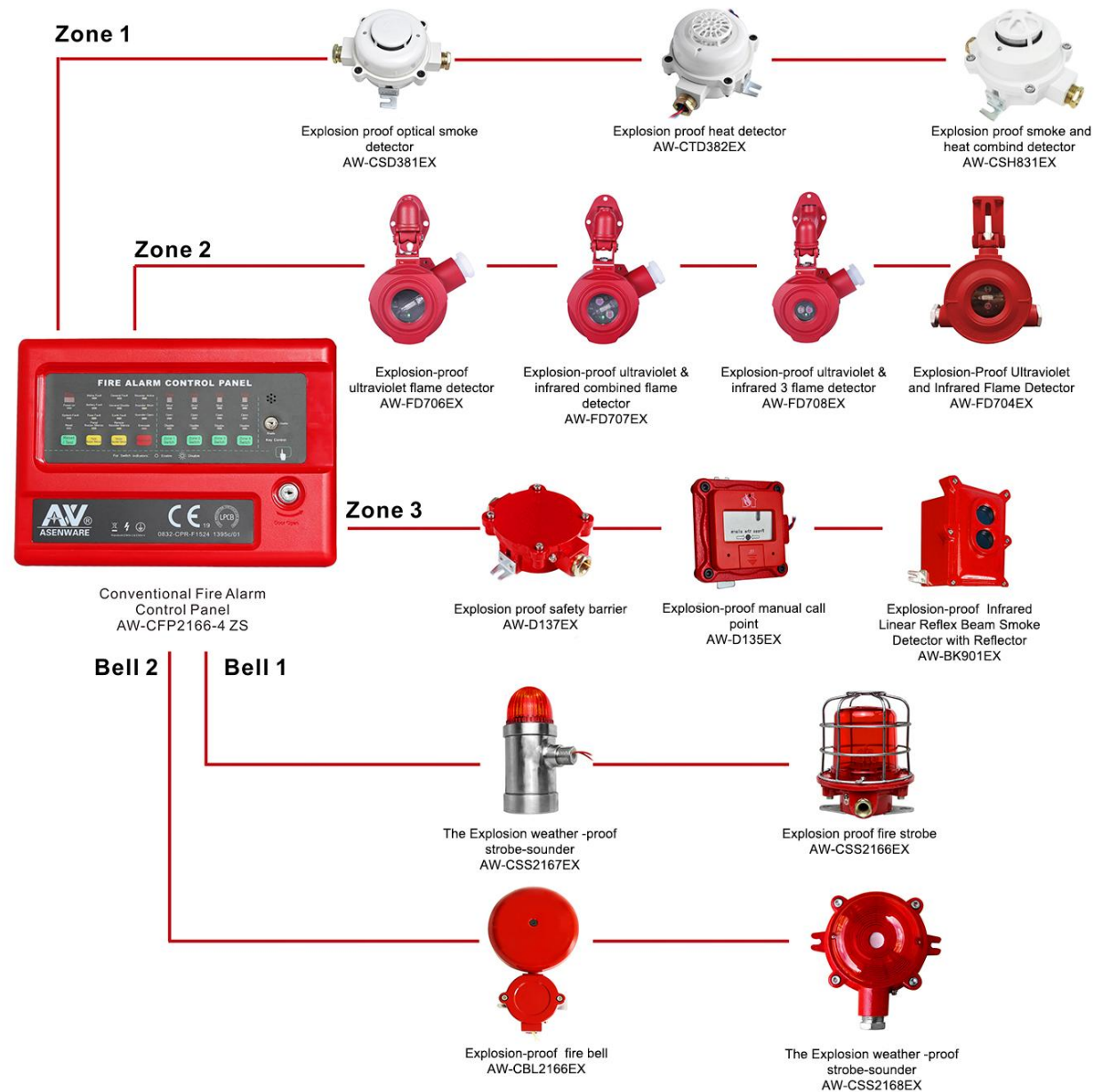
AW ASENWARE



- AC/DC Power Supply
- IP 65
- 10 minute buzzer silence
- 105dB @1m
- Meet EN54-3:2014 requirement

# Flame Detectors

## Explosion-proof Flame Detectors







## Certificato di esame UE del tipo

*EU-type examination certificate*

n. ECM 21 ATEX-B CQ78

Rilasciato ai sensi della direttiva 2014/34/UE – Allegato III - Modulo B  
Issued according to 2014/34/EU Directive – Annex III - Module B



*Richiedente*  
*Applicant*

Ragione Sociale  
Company Name

ASENWARE LTD

Indirizzo  
Address

6 Prospect Way, Royal Oak Industrial Estate, Daventry, Northamptonshire, NN11 8PL United Kingdom

Apparecchiatura  
Equipment

## Explosion Proof Fire Equipment

Modello(i)  
Model(s)[illegible]

Questa apparecchiatura o sistema di protezione e le sue eventuali varianti accettate sono descritte nel presente Certificato e nell'allegato dello stesso.

**L'ECM, Organismo Notificato n° 1282** In conformità all'Art. 17 della **ECM, Notified Body No. 1282** In accordance with Article 17, of the **Direttiva 2014/34/UE del Parlamento europeo e del Consiglio del 26 febbraio 2014**, certifica che questa apparecchiatura o sistema di protezione verificata secondo la procedura di cui all'allegato II della **Directive 2014/34/EU of the European Parliament and of the Council of 26 February 2014**, certifies that this equipment or protective system was tested according to the procedure set out in Annex II, **Modulo B**, è conforme ai requisiti essenziali di sicurezza e salute per **Module B**, complies with the essential health and safety requirements for the project and construction of equipment and protective systems intended for use in potentially explosive atmospheres given in Annex II of the Directive.

I requisiti essenziali di sicurezza e salute sono assicurati dalla  
rispondenza alle Norme applicate: EN 60079-0:2012+A11:2013,  
EN 60079-1:2014.

**Questo Certificato di esame UE del tipo è relativo soltanto al progetto, all'esame ed alle prove dell'apparatura o sistema di protezione specificato in accordo con la Direttiva 2014/34/UE. Ulteriori requisiti di questa Direttiva si applicano al processo di produzione e fornitura dell'apparatura o sistema di protezione: questi requisiti non sono oggetto del presente certificato.**

L'apparecchiatura o il sistema di protezione deve riportare i seguenti contrassegni:  
The equipment shall be marked with the following symbols:

II 2 G Ex d IIC T6 Gb

Valsamoggia (BO)

Timbro

Scadenza- Expiry date 30/11/2026

Questo certificato, incluso l'allegato, può essere riprodotto solo integralmente e senza alcuna variazione.  
This certificate, annex included, can only be reproduced in its entirety and without any change.

Firma autorizzata  
Authorized signature

Amanda Payne  
(Deputy Manager)

Pag. 1 di 1



## Petroleum



## Shipbuilding



Vehicle manufacturing



## Underpass



Fired power plant



Metallurgy



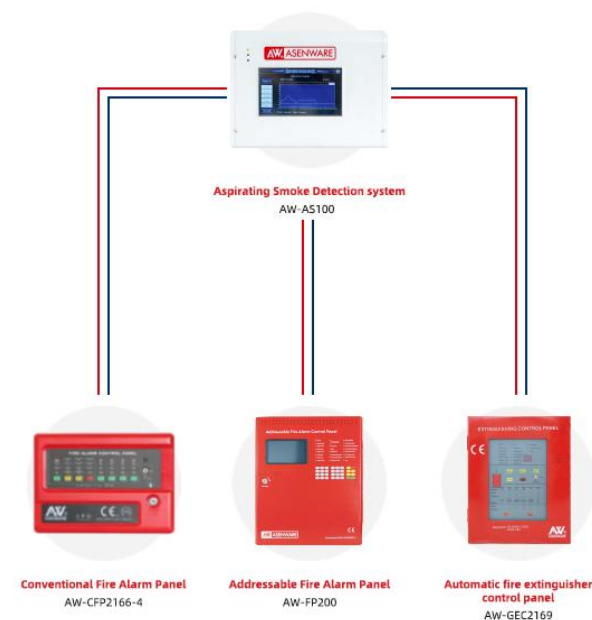
## ASPIRATING SMOKE DETECTION SYSTEM



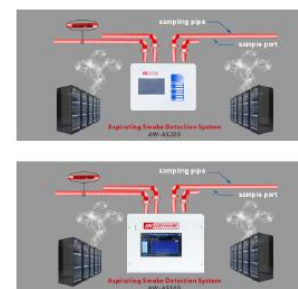
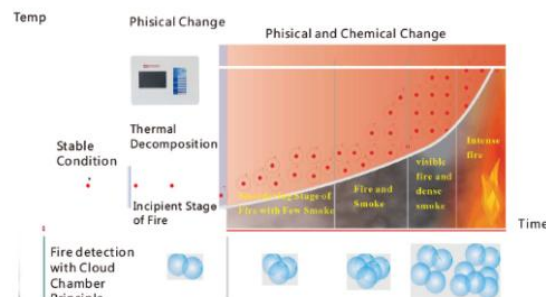
### Feature

- 7 inch color touch screen
- 2 & 4 detection pipe available
- Earlier detection with high sensitivity
- Automatic cleaning function
- Multi-level alarm function with 5 alarm stage

### Work with Fire alarm and gas suppression panel



### Combustion analysis



### Applicable scene



Bank vault



Warehouse



Library



Pharmaceutical factory



Museum



Machine room



## Fire Linear Heat Cable



Explosion Proof



Weather proof type



High Performance  
of Chemical  
Resistance



Up to 500 meters



### Fire Linear Heat Cable

	AW-D4068(68°C)
	AW-D4088(88°C)
	AW-D4105(105°C)
	AW-D4138(138°C)
	AW-D4180(68/88/105/138/180°C)



Explosion Proof



Weather proof type



High Performance  
of Chemical  
Resistance



Up to 500 meters



Fire and flame retardant

Digital Normal Indoor type  
Outdoor using  
Used in Hazardous Areas Type



Fire Linear Heat Cable

# Fire Linear Heat Cable

## CERTIFICATE OF COMPLIANCE

Certificate Number S36557  
Report Reference S36557-20211218  
Issue Date 2022-February-18

Issued to: SHENZHEN ASENWARE TEST AND CONTROL  
TECHNOLOGY CO., LTD  
26h, Building D, Shihong Garden, 63 Fanshen Road, Anle  
Community, Xin'An Street, Bao'An District  
Shenzhen, GUANGDONG 518101 China

This certificate confirms that representative samples of Heat-actuated Devices for Special Application  
See Addendum Page

Have been investigated by UL in accordance with the  
Standard(s) indicated on this Certificate.

Standard(s) for Safety: UL 521, Standard for Safety for Heat Detectors for Fire  
Protective Signaling Systems

Additional Information: See the UL Online Certifications Directory at  
<https://iq.ulprospector.com> for additional information.

This Certificate of Compliance does not provide authorization to apply the UL Mark. Only the UL Follow-Up  
Services Procedure provides authorization to apply the UL Mark.

Only those products bearing the UL Mark should be considered as being UL Certified and covered under UL's  
Follow-Up Services.

Look for the UL Certification Mark on the product.

*Barry*

Erica Mahrt, Director North American Certification Program  
UL LLC

Any information and documentation involving UL Mark services are provided on behalf of UL LLC (UL) or any authorized licensee of UL. For questions, please  
contact your local UL Customer Service Representative at [ULCustomerService@ul.com](mailto:ULCustomerService@ul.com)



## Applicable scene



Cable tunnels  
cable shafts  
cable interlayers  
cable trays



It is not easy to  
install the interlayer  
and dull page of the  
point detector;



Various belt  
transmission devices;



Other harsh  
environments are  
not suitable for  
the installation  
of typical detectors.



## Fire-proof Cable



High  
conductivity



Low loss



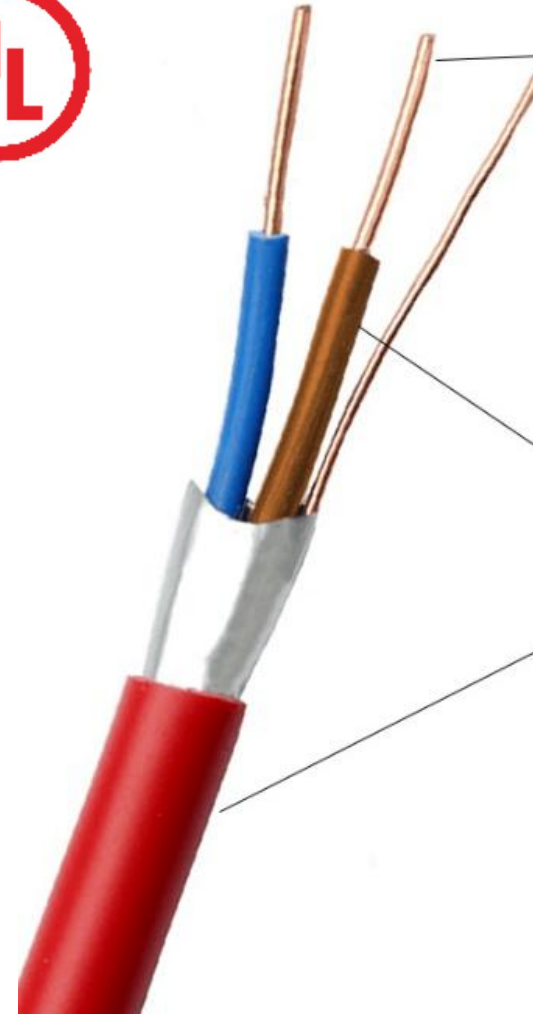
Save power



Durable

AW ASENWARE

Guta



Refractory  
Aluminum FOIL



Low smoke  
halogen-free  
non-toxic  
odorless

## CERTIFICATE OF COMPLIANCE

Certificate Number E525595  
Report Reference E525595-20211202  
Issue Date 2021-DECEMBER-02

Issued to: SHENZHEN ASENWARE TEST AND CONTROL  
TECHNOLOGY CO., LTD  
26h, Building D, Shihong Garden, 63 Fanshen Road, Anle  
Community, Xin'An Street, Bao'An District Shenzhen CN  
GUANGDONG CN 518101

This certificate confirms that  
representative samples of

POWER-LIMITED FIRE ALARM CABLE  
Models: FPL, FPLR

Have been investigated by UL in accordance with the  
Standard(s) indicated on this Certificate.

Standard(s) for Safety: UL 1424 - Cables for Power-Limited Fire-Alarm Circuits  
Additional Information: See the UL Online Certifications Directory at  
<https://iq.ulprospector.com> for additional information.

This Certificate of Compliance does not provide authorization to apply the UL Mark. Only the UL Follow-Up  
Services Procedure provides authorization to apply the UL Mark.

Only those products bearing the UL Mark should be considered as being UL Certified and covered under UL's  
Follow-Up Services.

Look for the UL Certification Mark on the product.

*Barbara*  
Barbara Mahrenholz, Director North American Certification Program  
UL LLC

Any information and documentation involving UL Mark activities are provided on behalf of UL LLC (UL) or any authorized licensee of UL. For questions, please  
contact a local UL Customer Service Representative at [ul@ulprospector.com](mailto:ul@ulprospector.com).



## Applicable scene



Hospital



Supermarket



Building



Office building



Factory



School



**AW ASENWARE**



## RACK TYPE VOICE EVACUATION SYSTEM



**AW ASENWARE**



## WALL-MOUNTED VOICE EVACUATION SYSTEM





### YOUTUBE operating videos:

How to Wire and Operate AW-EVC500 Emergency Voice Evacuation Control System

<https://youtu.be/m8hAHZgYImQ>

### Work with Fire alarm and gas suppression panel



Conventional Fire Alarm Panel  
AW-CFP2166-4



Addressable Fire Alarm Panel  
AW-FP200



Automatic fire extinguisher control panel  
AW-GEC2169



Emergency Voice Evacuation Controller  
AW-EVC500





- AW-EVC500 Emergency Voice Evacuation Controller is the all-in-one wall-mounted public address controller with fire/emergency voice evacuation and background music function.
- It has the built-in battery charger for 12V12AH\*2 lead acid batteries.
- It has a 500Watt amplifier inside.
- It has 10-zone speaker outputs.
- 1x USB for MP3 background music.
- 1x SD card for pre-record emergency voices.
- 1x Microphone.
- 2x Remote pagings.
- 1x audio input.
- 1x audio output.
- 1x CAN bus. (only for ASENWARE addressable fire alarm panel connection)
- 10x emergency inputs. (for all brands' products connection)
- Voice volume and quality adjustable.
- Emergency zone and speaker zone programmable.
- High-quality voice, frequency response 80HZ-10KHZ±3DB.



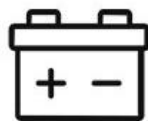
Build-in 500Watt  
amplifier



10 zone  
speaker outputs



MP3  
background music



Built in  
battery charger



Shopping mall



Supermarket



Restaurant



Hospital



Factory

### Application scene



- 5 zone control boards, 50 speaker zones in total, used for extending zones, and can also be used to expand power with external power amplifiers. Each speaker zone has an independent isolating switch.
- Each zone board has 10 speaker zones, 1 audio input and 1 audio output.
- Indicators for each zone board: 1 power indicator, 10 activation indicators, 10 isolation indicators.





- Preamplifier+MP3 player+ Emergency Voice+Battery charger.
- Communication with fire alarm panel. 2xMic+2AUX IN + 2xPaging (200 addresses)+ MP3 + Bluetooth+1xSD card.
- 1x Built-in Speaker+ 2x Audio Output.
- 20x emergency input +1x CAN+ 2x RS485 +1x LAN.



- 3.4-inch display screen
- Network cable connection
- Priority level management
- Zone control





- Each partitioner contains 10 partitions and can be cascaded up to 99 partitions up to 990 partitions.
- The zone output can be connected to 3-wire speakers.
- The isolation and activation of each partition can be controlled by pressing a button.
- Use RS485 to connect to the cabinet-type broadcast host, and use it in conjunction with the host to control the opening and closing of the partition.



- Eight independent high-power supply outputs
- Universal sockets can be used for a variety of three-pole power sockets and two-pole European round head socket
- Maximum single output is 16A, total input current capacity is 25A
- The switching status of eight channels can be operated and displayed by panel control
- Open the equipment one by one from the front to the back when powering on. Shut down the equipment one by one from the back to the front when powering off



### Power Amplifier

AW-AP500/1000/1500/2000



- Power Amplifier from 350W to 2000W
- Support fault output function

## Work with Fire alarm and gas suppression panel



Conventional Fire Alarm Panel  
AW-CFP2166-4



Addressable Fire Alarm Panel  
AW-FP200



Automatic fire extinguisher control panel  
AW-GEC2169



Emergency Voice Evacuation System  
(Rack Type)





# Emergency Lighting

AW ASENWARE

Guta

DEKRA  
On the safe side.



LED Lamp Emergency Light  
TUV Certificate  
AW-EL101

DEKRA  
On the safe side.



Twin Lamp Emergency Light  
AW-EL207



Twin Lamp Emergency Light  
AW-EL208



Exit Sign TUV Certificate  
AW-EL301



Twin Lamp Emergency light  
AW-EL203



Dual Head LED Emergency Light  
AW-EL204



Exit Sign  
AW-EL304



Exit Sign with lamp head  
AW-EL205



Twin-spot LED Emergency Light  
AW-EL206



Suspended Exit Sign  
AW-EL303

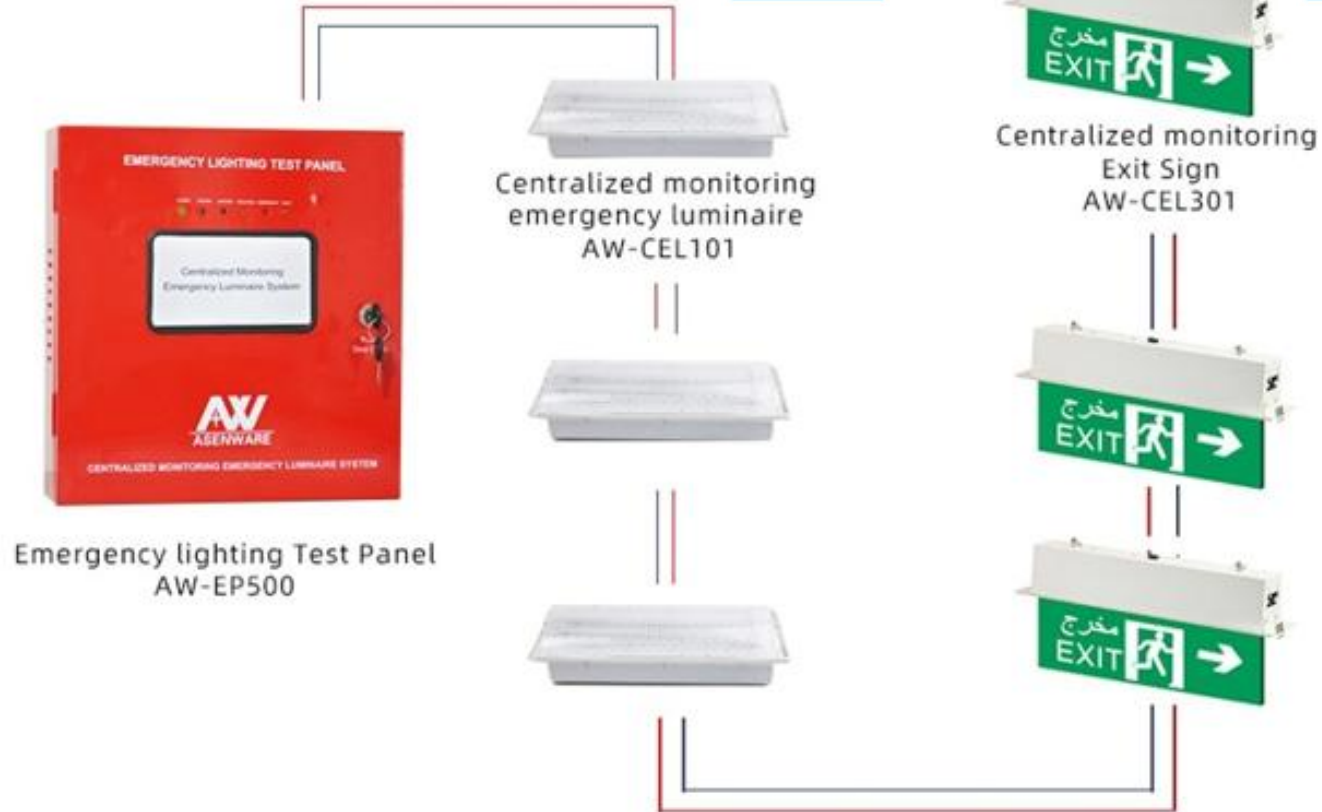


Wall-mounted Exit Sign  
AW-EL306



Suspended LED Acrylic Exit Sign  
AW-EL305

# Emergency Luminaire System



## Applicable scene



Hospital



Supermarket



building

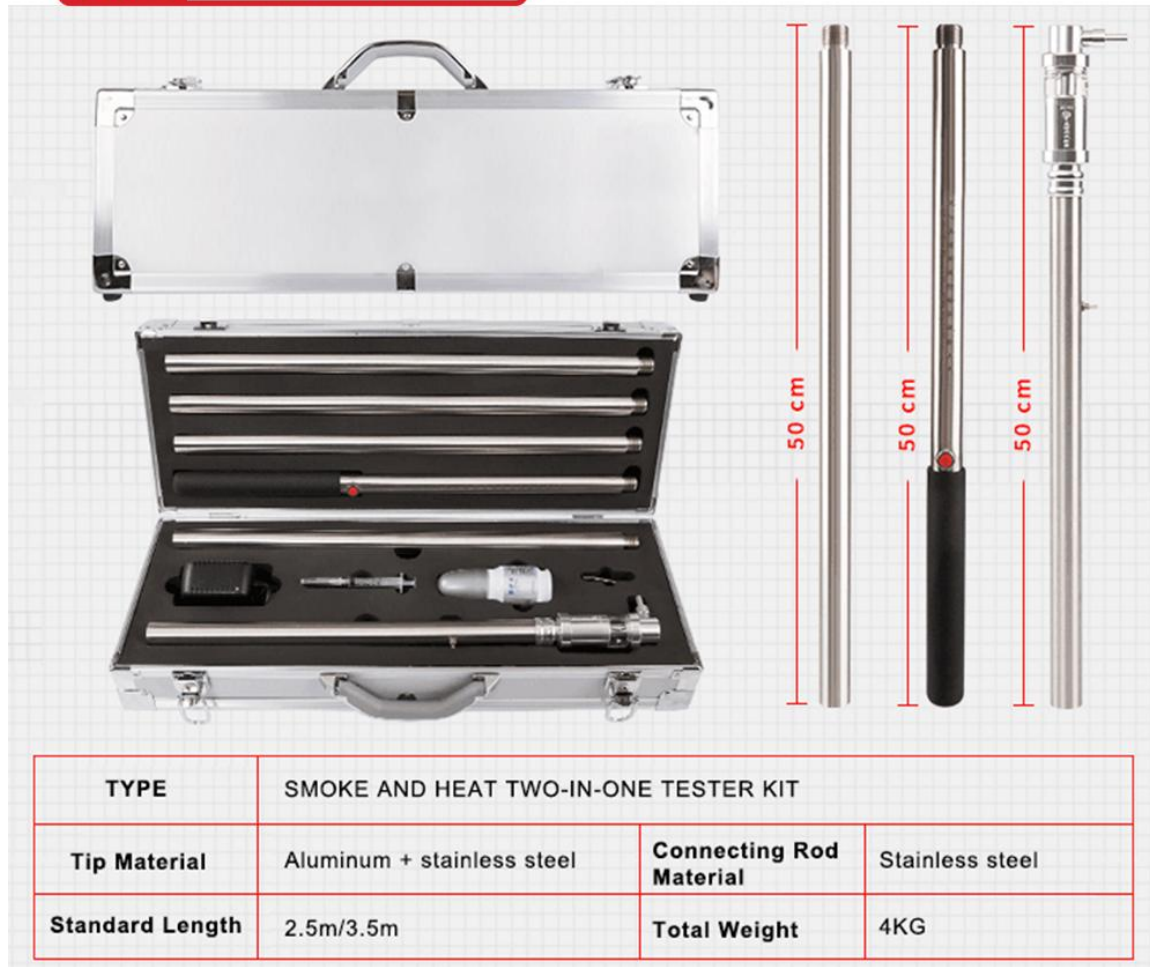


# Detector Tester Series

**AW ASENWARE**



**AW ASENWARE**



TYPE	SMOKE AND HEAT TWO-IN-ONE TESTER KIT		
Tip Material	Aluminum + stainless steel	Connecting Rod Material	Stainless steel
Standard Length	2.5m/3.5m	Total Weight	4KG



## Applicable scene



Hospital



Supermarket



Building



Office building



Factory



School

## Detector Tester Series



### Parameter

- Heating Element :220V/100W or 110V/100W
- Length 1.75meter x Dia.32mm Light weight Aluminum Pole
- Cable Length 30meter
- Aluminum case with lock

### General Description

The heat detector tester is specially designed to provide quick and reliable testing of heat detector with a maximum of safety regardless of the number of units to be tested for fire alarm system on the ceiling, offers efficient testing in a simple to use format for power 110V to 230V. The main parts of the products are aluminum and stainless steel, firm and durable to use, simple and practical to operate, convenient and easy to carry. The product is widely applicable for firefighting system installation and engineering, fire alarm system maintenance and testing etc.



### Parameter

- Length 1.6 meter x Dia.32mm
- Light Weight Aluminium pole
- Triggering mechanism
- Aluminium case with lock

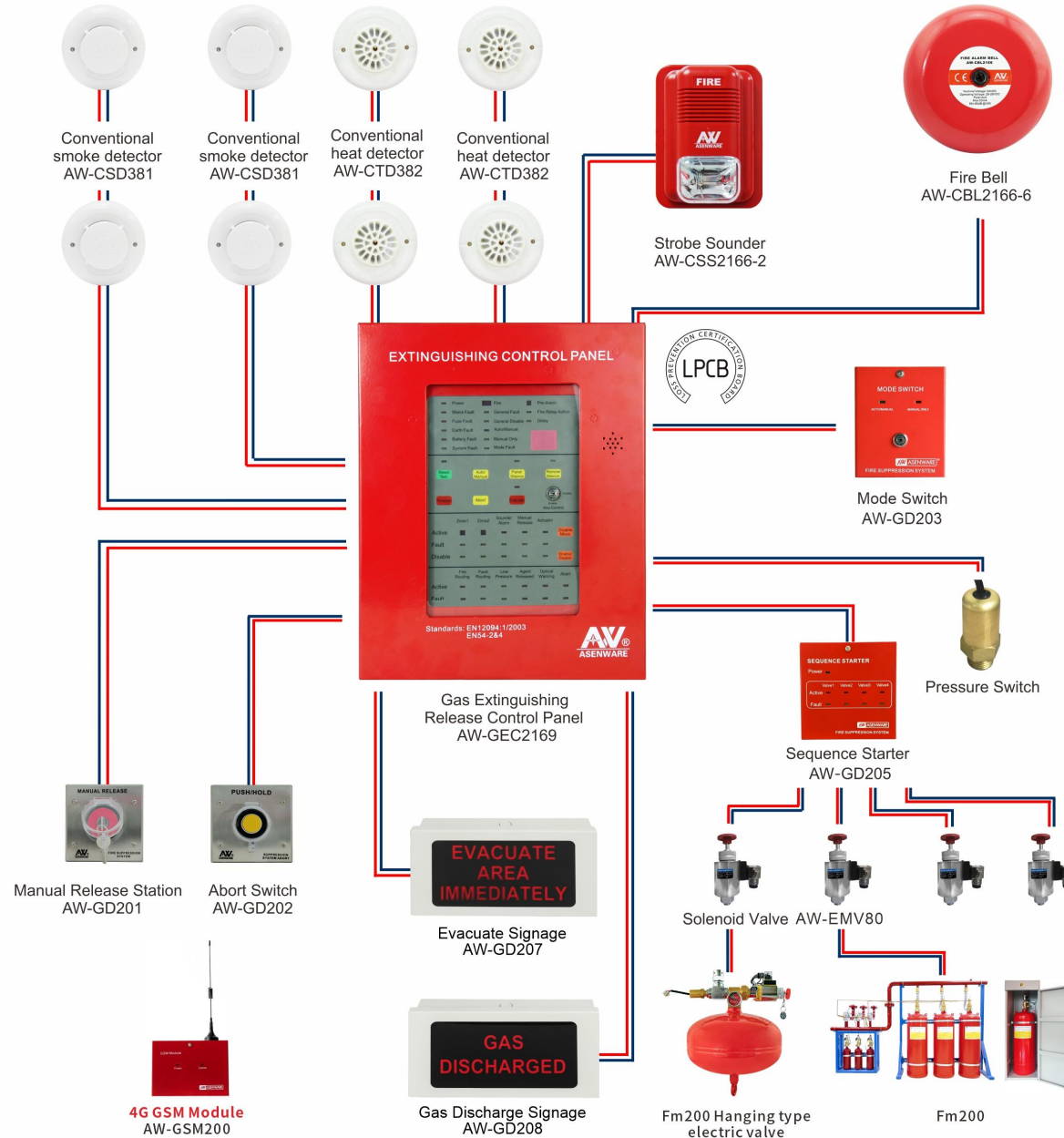
### General Description

The smoke detector tester is specially designed for checking the ionization and photoelectric detector at sight for smoke detection fire alarm system on the ceiling, offers efficient testing in a simple to use format either handheld or with use of a light weight aluminum alloyed dispenser. The main parts of the products are aluminum and stainless steel, firm and durable to use, simple and practical to operate, convenient and easy to carry. The product is widely applicable for firefighting system installation and engineering, fire alarm system maintenance and testing etc.





# Gas Suppression System



### AW-GEC2169 EXTINGUISHING CONTROL PANEL



Stand-By  
Power Build-in



Delay Time  
Adjustable Setting



Automatically  
Power Switching



GSM Module  
Optional Installation

### Features

- **Durable:** Outside cabinet protection
- **Resettable:** Panel reboot time and extinguishant release both can be delayed
- **Multifunctional:** Resettable 24V DC port can connect 4-wire devices
- **Selectable:** Enable / disable function
- **Pre-alarm:** Pre-alarm is the first stage fire alarm
- **Standard:** Standard EN54-2, EN12094-1

### Applicable scene



Data room



Electrical room



Library



Scientific research  
test building



Transformer



Valuable equipment  
room

### YOUTUBE operating videos:

What Is A Gas Fire Suppression Release Control System

<https://youtu.be/Gp1GaackL24>



# Gas Suppression System

# Gas Fire Suppression System



Maintained easily



Automatic extinguishing system



High extinguishing efficiency

شهادة – Certificat – 증명서 – 證明書 – Сертификат – Certificate

## Certificate of Compliance

No. 3N220104.A0049

Certificate's Holder: **ASENWARE LTD.**  
6 Prospect Way  
Royal Oak Industrial Estate  
Daventry, Northamptonshire,  
NN11 8PL  
United Kingdom

Certification  
ECM Mark:



Product: Gas Suppression System  
Model(s): AW-FMC2042, AW-FMC4042, AW-FMC7042, AW-FMC9042, AW-FMC12042, AW-FMC15042, AW-FMC18042, AW-FMCB2025, AW-FMCB4025, AW-FMCB7025, AW-FMCB9025, AW-FMCB12025, AW-FMCB15025, AW-FMCB18025, AW-GSFH, AW-GSFT, AW-GSNM, AW-GSNB, AW-GSNT, AW-GSCM, AW-GSCB, AW-GSCT, AW-GSDH, AW-GSKT, AW-GSIT

Verification to: Standard:  
EN 3-9:2006

Remark: The product(s) has been verified on a voluntary basis. The product(s) satisfies the requirements of the Certification Mark of ECM. In reference to the above listed Standard(s), the above Compliance Mark can be affixed on the product(s) accordingly to the ECM regulation about its release and its use. The regulation can be found at [www.entecerma.it](http://www.entecerma.it). This Certificate of Compliance can be checked for validity at [www.entecerma.it](http://www.entecerma.it). This verification doesn't imply assessment of the production of the product(s).

Date of issue: 04 January 2022

Service Manager  
Luca Badonni



Expiry date: 03 January 2027

Deputy Manager  
Amanda Payne



Ente Certificazione Macchine Srl

Via Ca' Bella, 243 - Loc. Castello di Serravalle - 40053 Valsamoggia (BO) - ITALY  
☎ +39 051 6705141 📠 +39 051 6705156 ✉ info@entecerma.it 🌐 www.entecerma.it

Asenware engineers design gas system BOQ based on NFPA standard  
Quick gas spraying time less than 10s  
Options delay time (0-75s) to release gas agent  
Automatic and manual activation mode options  
FM200 and FK-5-1-12 is clean agent for environmental protection  
Applicable to data room, server room, ups room, IT room etc.

## Applicable scene



Data room



Electrical room



Library



Scientific research test building

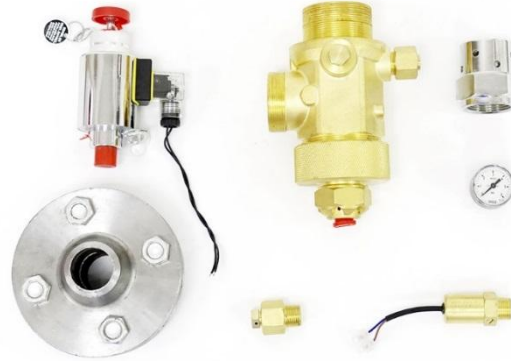


Transformer



Valuable equipment room

## Network Type

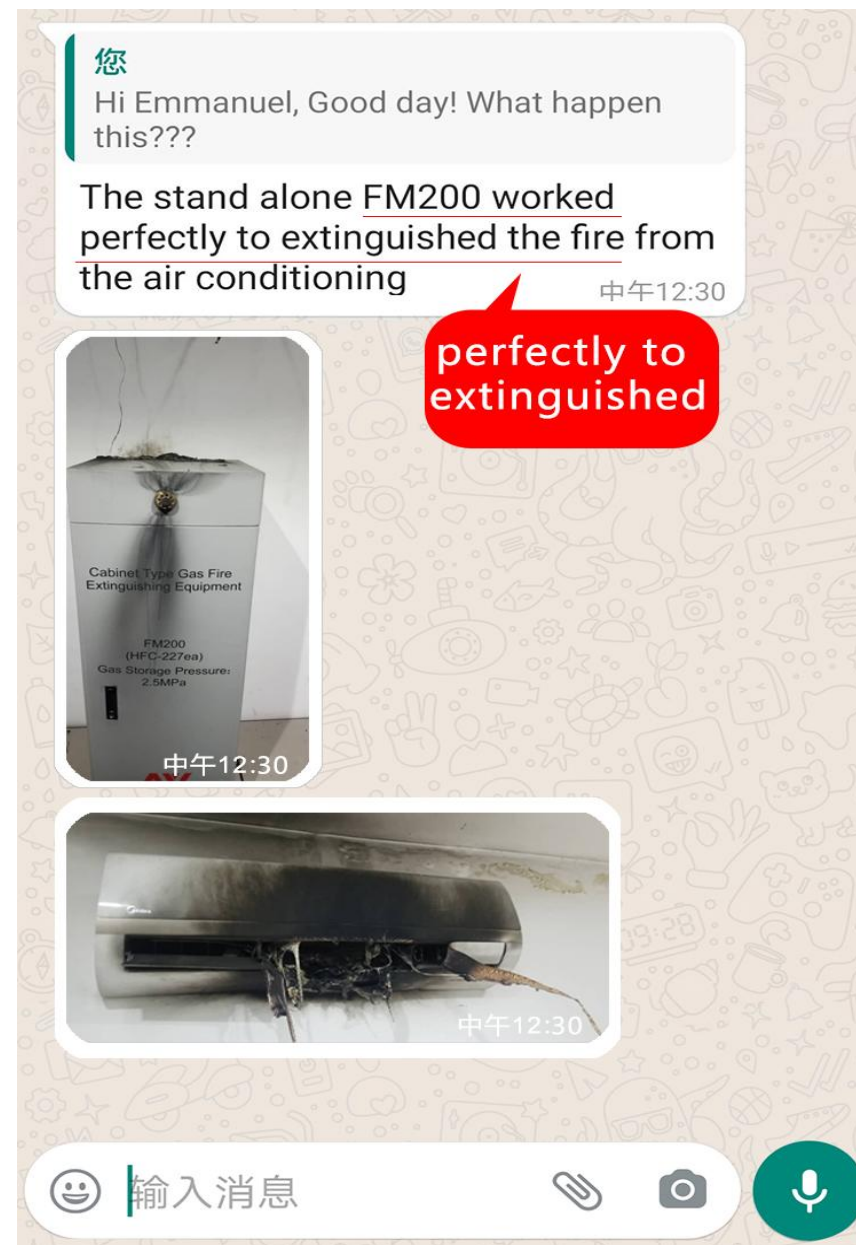
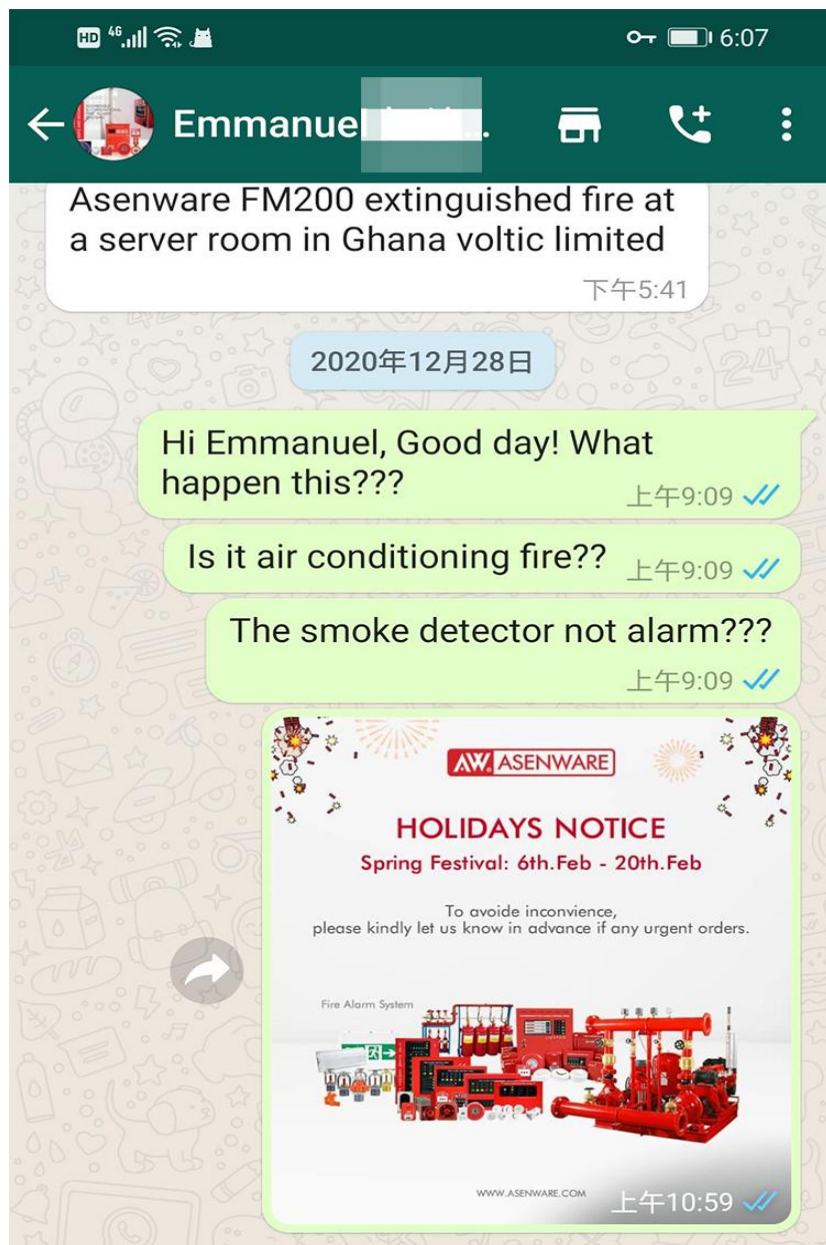


## Cabinet Type





## Customer Praise



Gas Suppression System

CO<sub>2</sub> Fire Suppression System

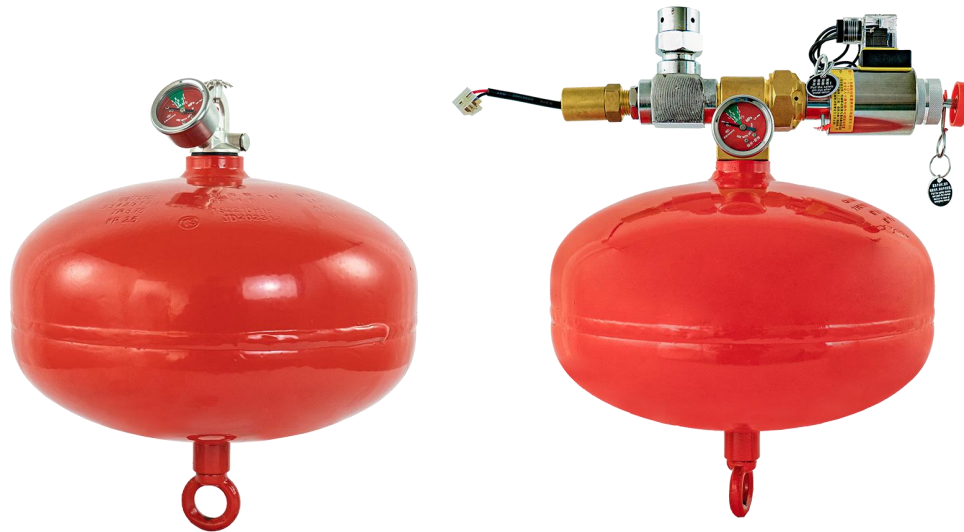


AW ASENWARE





## Hanging Type



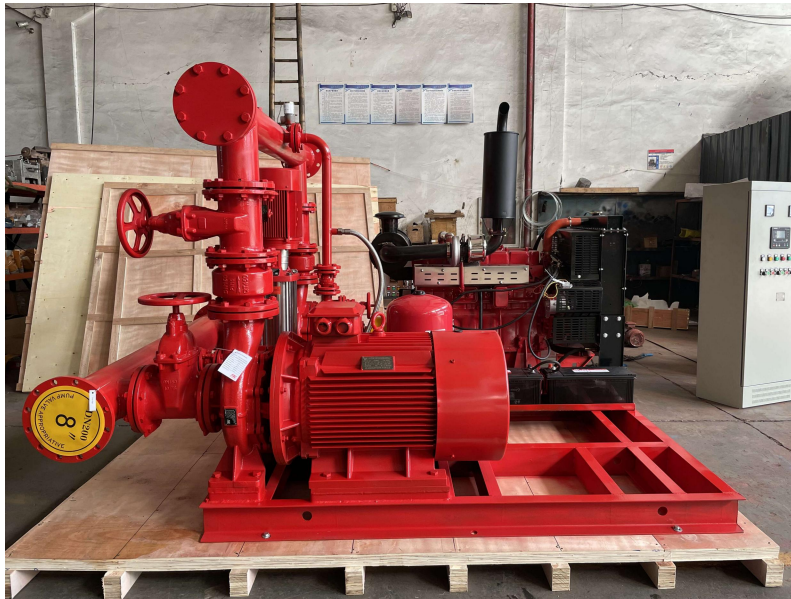
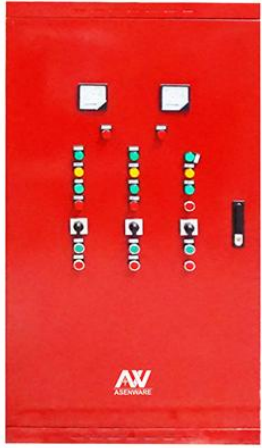
Fixed Temperature Hanging Type

Electric Hanging Type

## Tube Type



# Fire Pump System





## Fire Sprinkler System



Wet Alarm Valve



Deluge Alarm Valve



Pre-action Alarm Valve



Gate Valve



Butterfly Valve



Pressure Reducing Valve

## Fire Sprinkler System



**2 Way Fire Hydrant**



**3 Way Fire Hydrant**



**Flange Type Landing Valve**



**Thread Type Landing Valve**



**2 Way Breeching Inlet**



**4 Way Breeching Inlet**



## Fire Sprinkler System



**Y-strainer**



**Main Relief Valve**



**Flow Indicator**



**Flow Meter**



**Seamless Galvanized Steel Pipe**



**Pipe Fittings**

# Foam Suppression System



**Horizontal Type**



**Vertical Type**



**Foam Monitor**



**Foam Chamber**



# Fire Hose Reel



# Fire Hose Rack



AW ASENWARE



Durable PVC Hose

- High burst pressure
- Good flexibility and light weight
- High elasticity
- Thin and smooth PVC inner
- Extreme low friction loss
- Temperature range from 140F to 131 F (-10°C to 55°C)



Hose Rack



Angle  
Hose Valve



Hose  
Nozzle



Hose  
Adapter

## American Type



## British Type

AW ASENWARE



## German Type





**Tempered Glass Type**



**Stainless Steel Type**

# Fire Blanket



Box Package



Plastic Package

## Applicable scene



Hospital



Supermarket



Building



Office building



Factory



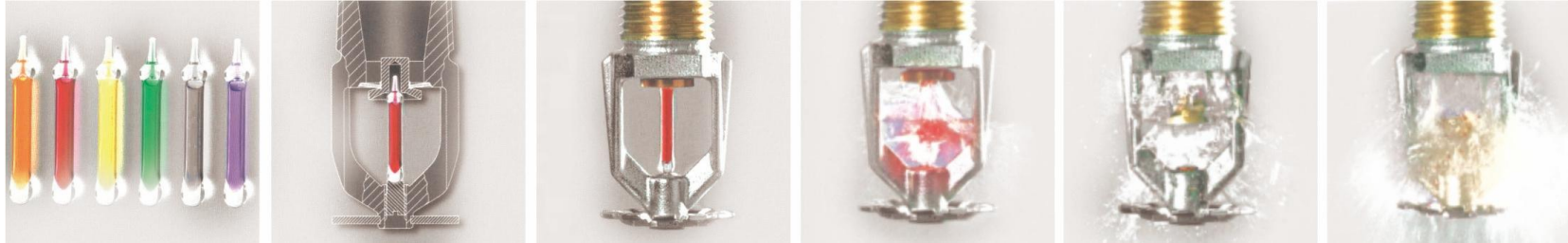
School



# Fire Sprinklers



AW ASENWARE



Fire Sprinklers



# 06

PART SIX

## **Comprehensive Services**

ASENWARE provides professional team supports and customized services.



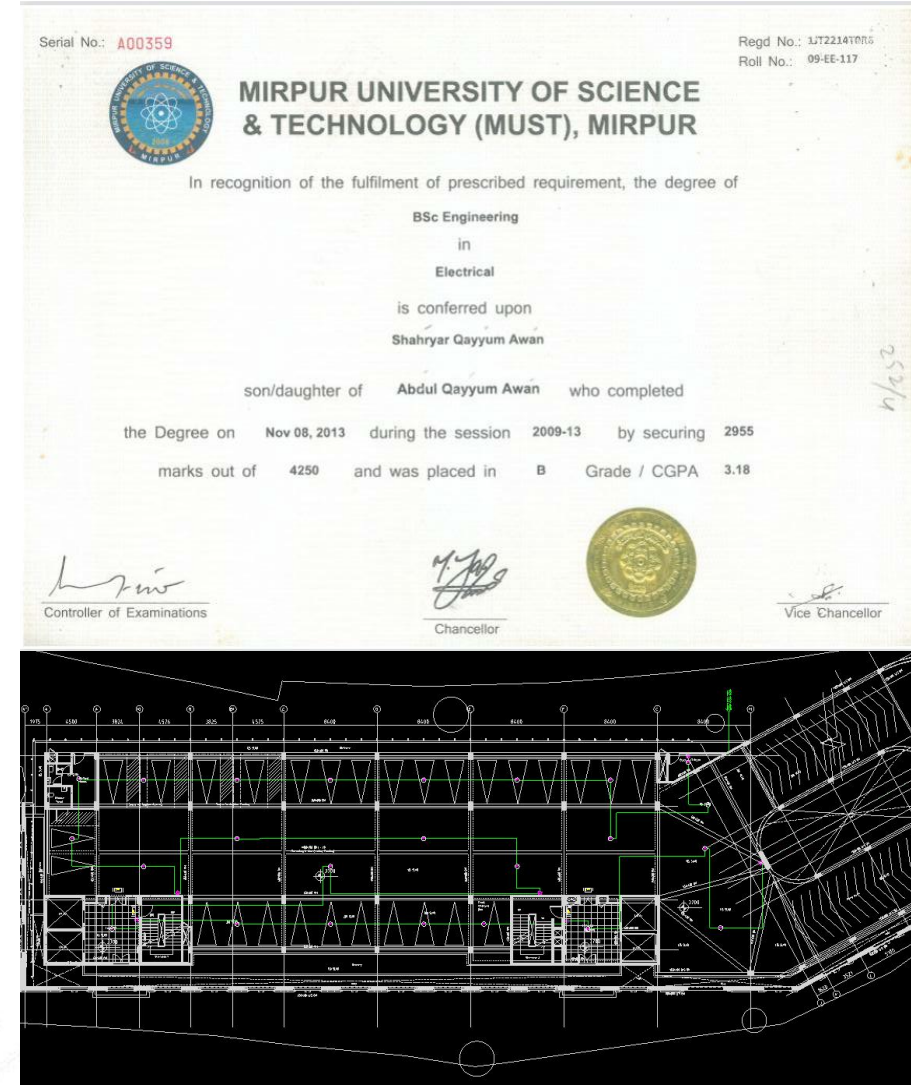
# 1/ Professional R&D Team and Advanced Equipment





## 2/ International Engineer Designing Team


Layout and BOQ designing are based on NFPA standard.








### 3/ Strong After-sales Team

24-hour online free technical services, training, guiding videos, on-site project guidance etc.

 **One-to-one engineer video technical guidance**



   
Ding Talk Teams

- **Video** tour of our factory
- **Video** to answer your technical questions
- **Video** product introduction, etc.

We will provide you with the most professional video guidance

**Come and book a one-to-one video service.**



# 4/ Free Exhibition Board Design





# Media Account



YouTube



Website



TikTok



YouTube\_ASENWARE



TikTok\_ASENWARE



Facebook\_ASENWARE LTD



LinkedIn\_ASENWARE FIRE SAFETY

# **A S E N W A R E L T D**

## **Thanks for watching**

[www.asenware.com](http://www.asenware.com)  
[www.asenwarefire.com](http://www.asenwarefire.com)