



# **HANMIX**

## **TBR**

Truck and Bus Radial Tire

Product parameter  
manual

Tel: +86 532 80920608  
Email: [info@hanmix.net](mailto:info@hanmix.net)  
Web: [www.hanmix.net](http://www.hanmix.net)





## WHY HANMIX?

HANMIX is an international brand with 40 years' experience in Tyre and Tyre Accessories business. HANMIX is not only a brand name, but a way for a better life. You can find security, safety and high quality life in the HANMIX World.



## HANMIX THE QUALITY

HANMIX is committed to conducting comprehensive assessments of product quality, price, ability to supply our clients locally and internationally. All HANMIX products comply with international quality standards and are respected throughout the world.


-----[WWW.HANMIX.NET](http://WWW.HANMIX.NET)

### Quality Control:

HANMIX provides quality and quantity inspections, and offers a warranty for products purchased.



Inspected each tyre from production to the warehouse to the markets. Inspected each tyre by serial number, tread depth and weight. Inspected each tyre by international laboratory standards.

-  REGIONAL
-  LONG HAUL

# TRUCK AND BUS TIRE



MIX-111



MIX-112



MIX-PLUS11



MIX-HEAVY



MIX-HEAVY3



MIX-111



MIX-SMART1



MIX-SMART4



## MIX-111

### REGIONAL



**Suitable:** All wheel position, medium/long-haul vehicles, running on mixed pavements.

### Features

- Super abrasion resistance.
- Excellent heat dissipation performance.
- Good handling and traction performance.
- Excellent fuel efficiency.

SIZE	PR	STANDARD RIM	LOAD INDEX	SPEED RATING	MAX LOAD (KG) SINGLE/DUAL	MAX PRESSURE (KPA)	OUTER DIAMETER (MM)	SECTION WIDTH (MM)
6.50R16LT	12	4.50	110/105	K	1060/925	670	755	182
7.00R16LT	14	5.50F	118/114	K	1500/1320	770	778	202
7.50R16LT	12	6.00G	120/116	L	1400/1250	670	802	210
	14		122/118	L	1500/1320	770		
8.25R16LT	14	6.50H	126/122	L	1700/1500	670	860	230
	16		128/124	L	1800/1600	770		
8.25R20	14	6.5	136/134	K	2240/2120	830	974	236
	16		139/137	K	2430/2300	930		
9.00R20	14	7.0	141/139	K	2575/2430	790	1018	258
	16		144/142	K	2800/2650	900		
10.00R20	16	7.5	146/143	K	3000/2725	830	1052	275
	18		149/146	K	3250/3000	930		
11.00R20	16	8.0	150/147	K	3350/3075	830	1082	286
	18		152/149	K	3550/3250	930		
12.00R20	18	8.5	154/151	K	3750/3450	830	1122	313
	20		156/153	K	4000/3650	900		
12.00R24	18	8.5	158/155	K	4250/3875	830	1226	313
	20		160/157	K	4500/4125	900		
11R22.5	16	8.25	146/143	M	3000/2725	830	1050	279
	18		151/148	K	3450/3150	930		
12R22.5	16	9.00	150/147	M	3350/3075	830	1084	300
	18		152/149	K	3550/3250	930		
13R22.5	16	9.75	152/149	L	3550/3250	760	1124	320
	18		154/151	K	3750/3450	830		
315/80R22.5	18	9.00	154/151	K	3750/3450	830	1076	312
	20		157/154	K	4125/3750	900		



## MIX-112

### REGIONAL



**Suitable:** All wheel position, running on highway, mixed pavements.

### Features

- Superior adhesion properties of the ground.
- Excellent wet skid resistance.
- Low heating up.
- Good wear resistance.

SIZE	PR	STANDARD RIM	LOAD INDEX	SPEED RATING	MAX LOAD (KG) SINGLE/DUAL	MAX PRESSURE (KPA)	OUTER DIAMETER (MM)	SECTION WIDTH (MM)
12.00R24	20	8.50	160/157	K	4500/4125	900	1226	313





## MIX-PLUS11

### REGIONAL



**Suitable:** All position of trucks running on non-paved roads.

### Features

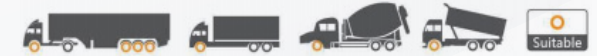
Block tread pattern provides excellent gripping and traction power.  
Tough belt construction for smooth wear and longer mileage.  
Special tread compound for high resistance against tread cut.

SIZE	PR	STANDARD RIM	LOAD INDEX	SPEED RATING	MAX LOAD (KG) SINGLE/DUAL	MAX PRESSURE (KPA)	OUTER DIAMETER (MM)	SECTION WIDTH (MM)
9.00R20	16	7.00	144/142	K	2800/2650	900	1018	258
10.00R20	18	7.50	149/146	K	3250/3000	930	1052	275
11.00R20	18	8.00	152/149	K	3550/3250	930	1082	286
12.00R20	20	8.50	156/153	K	4000/3650	900	1122	313



## MIX-HEAVY

### REGIONAL



**Suitable:** Driving wheel position on good road condition and non-paved roads.

### Features

Big deep block provide strong traction and braking power.  
Open groove and bottom design given excellent self cleaning performance.  
Reinforced bead and body to strengthen the puncture resistance, tear resistance.

SIZE	PR	STANDARD RIM	LOAD INDEX	SPEED RATING	MAX LOAD (KG) SINGLE/DUAL	MAX PRESSURE (KPA)	OUTER DIAMETER (MM)	SECTION WIDTH (MM)
11.00R20	18	8.00	152/149	K	3550/3250	930	1082	286
12.00R20	20	8.50	156/153	K	4000/3650	930	1122	313.0
12.00R24	20	8.50	160/157	K	4500/4125	900	1226	313
7.50R16LT	14	6.00G	122/118	L	1500/1320	770	802	210
8.25R16LT	16	6.50H	128/124	K	1800/1600	770	860	313



## MIX-HEAVY3

### REGIONAL



**Suitable:** Driving wheel position on good road condition and non-paved roads.



## MIX-111

### LONG HAUL



**Suitable:** All wheel position, medium/long-haul vehicles, running on mixed pavements.

## Features

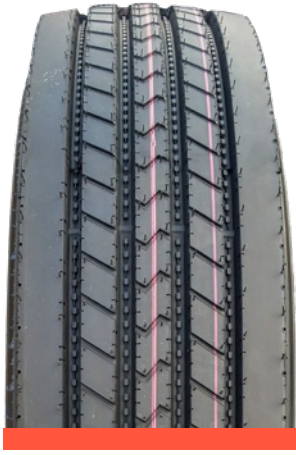
- Anti-overload and anti-burst ability.
- Anti-tearing formula, long life-time.
- Excellent driving performance.
- Anti-collapse performance.

SIZE	PR	STANDARD RIM	LOAD INDEX	SPEED RATING	MAX LOAD (KG) SINGLE/DUAL	MAX PRESSURE (KPA)	OUTER DIAMETER (mm)	SECTION WIDTH (mm)
7.50R16LT	12	6.00G	120/116	L	1400/1250	670	805	210
	14		122/118	L	1500/1320	770		
8.25R16LT	14	6.50H	126/122	L	1700/1500	670	859	230
	16		128/124	L	1800/1600	770		
8.25R20	14	6.5	136/134	K	2240/2120	830	965	230
	16		139/137	K	2430/2300	930		
9.00R20	14	7.0	141/139	K	2575/2430	790	1026	220
	16		144/142	K	2800/2650	900		
10.00R20	16	7.5	146/143	K	3000/2725	830	1053	276
	18		149/146	K	3250/3000	930		
11.00R20	16	8.0	150/147	K	3350/3075	830	1086	286.0
	18		152/149	K	3550/3250	930		
12.00R20	16	8.5	152/149	K	3550/3250	760	1124	304.0
	18		154/151	J	3750/3450	830		
12R22.5	20	9.00	156/153	G	4000/3650	900	1086	296
	16		150/147	M	3350/3075	830		
315/80R22.5	18	9.00	152/149	K	3550/3250	930	1083	308
	20		152/149	J	3550/3250	930		
12.00R24	18	8.5	154/151	K	3750/3450	830	1213	306
	20		157/154	K	4125/3750	900		

## Features

- Super abrasion resistance.
- Excellent heat dissipation performance.
- Good handling and traction performance.
- Excellent fuel efficiency.

SIZE	PR	STANDARD RIM	LOAD INDEX	SPEED RATING	MAX LOAD (KG) SINGLE/DUAL	MAX PRESSURE (KPA)	OUTER DIAMETER (MM)	SECTION WIDTH (MM)
6.50R16LT	12	4.50	110/105	K	1060/925	670	755	182
7.00R16LT	14	5.50F	118/114	K	1500/1320	770	778	202
7.50R16LT	12	6.00G	120/116	L	1400/1250	670	802	210
	14		122/118	L	1500/1320	770		
8.25R16LT	14	6.50H	126/122	L	1700/1500	670	860	230
	16		128/124	L	1800/1600	770		
8.25R20	14	6.5	136/134	K	2240/2120	830	974	236
	16		139/137	K	2430/2300	930		
9.00R20	14	7.0	141/139	K	2575/2430	790	1018	258
	16		144/142	K	2800/2650	900		
10.00R20	16	7.5	146/143	K	3000/2725	830	1052	275
	18		149/146	K	3250/3000	930		
11.00R20	16	8.0	150/147	K	3350/3075	830	1082	286
	18		152/149	K	3550/3250	930		
12.00R20	16	8.5	152/149	K	3550/3250	830	1122	313
	18		154/151	K	3750/3450	900		
12.00R24	18	8.5	156/153	K	4000/3650	900	1226	313
	20		158/155	K	4250/3875	830		
11R22.5	16	8.25	160/157	M	4500/4125	900	1050	279
	18		158/155	K	4250/3875	830		
12R22.5	16	9.00	146/143	M	3000/2725	830	1084	300
	18		151/148	K	3450/3150	930		
13R22.5	16	9.75	150/147	M	3350/3075	830	1124	320
	18		152/149	L	3550/3250	760		
315/80R22.5	18	9.00	154/151	K	3750/3450	830	1076	312
	20		154/151	K	3750/3450	830		
			157/154	K	4125/3750	900		



## MIX-SMART1

**LONG HAUL**



**Suitable:** Steer/trailer position, Long-distance transportation, running on high-grade road.

### Features

- High wear resistance.
- Low rolling resistance.
- Save fuel consumption.
- Good handling quality.

SIZE	PR	STANDARD RIM	LOAD INDEX	SPEED RATING	MAX LOAD (KG) SINGLE/DUAL	MAX PRESSURE (KPA)	OUTER DIAMETER (MM)	SECTION WIDTH (MM)
11R22.5	16	8.25	146/143	M	3000/2725	830	1050	279
11R24.5	16	8.25	149/146	L	3250/3000	830	1100	279
205/75R17.5	14	6.00	124/122	M	1600/1500	750	753	205
215/75R17.5	16	6.00	126/124	M	1700/1600	700	767	212
225/70R19.5	14	6.75	128/126	M	1800/1700	760	811	226
235/75R17.5	16	6.75	132/130	M	2000/1900	775	797	233
245/70R19.5	16	7.50	135/133	M	2180/2060	830	833	248
255/70R22.5	16	7.50	140/137	M	2500/2300	830	930	255
265/70R19.5	16	7.50	140/138	M	2500/2360	775	867	262
275/70R22.5	16	8.25	148/145	M	3150/2900	900	958	276
285/75R24.5	16	8.25	147/144	L	3075/2800	830	1056	283
295/75R22.5	16	9.00	146/143	L	3000/2725	830	1014	298



## MIX-SMART4

**LONG HAUL**



**Suitable:** Steer/trailer position of bus and truck running on high-grade road.

### Features

- Anti-slide performance, and strong grip ability.
- High wear resistance, low rolling resistance.
- Excellent heat radiation, guiding stability.

SIZE	PR	STANDARD RIM	LOAD INDEX	SPEED RATING	MAX LOAD (KG) SINGLE/DUAL	MAX PRESSURE (KPA)	OUTER DIAMETER (mm)	SECTION WIDTH (mm)
11R22.5	16	8.25	146/143	M	3000/2725	830	1050	279
12R22.5	18	9.00	152/149	M	3550/3250	930	1084	300
295/80R22.5	18	9.00	152/149	M	3550/3250	900	1044	298
315/80R22.5	18	9.00	154/151	K	3750/3450	830	1064	308
	20		157/154	K	4125/3750	900		
385/65R22.5	18	11.75	158	L	4250	830	1068	390
	20		160	K	4500	900	1068	390
	24		164	K	5000	900	1070	390