



SHANGHAI JIHOO IMPORT&EXPORT CO.,LTD

Twenty years of focus on achieving higher quality.

INTRODUCTION



SHANGHAI JIHOO IMPORT&EXPORT CO.,LTD, Since its establishment in 2002, has been committed to the best aluminum alloy wheels and services for customers with two major bands “Jihoo wheels” and “Realux Wheels” that meet different public needs.

The company has excellent R&D team, sales team and after-sales service team with more than 10 years of experience. We own many patent rights, have powerful product design ability and professional market development concept, dedicate to customize various high-quality and individualized wheels for a variety of automotive vehicles, and provide professional consultancy sales services. By analyzing the differentiated demands of customers in the global market, our R&D team has independently developed 200 new products in the past three years.

After more than 20 years' cultivation, the company has 52 production bases in China and takes equity stakes in 12 aluminum alloy wheel manufacturing enterprises. Our products have been sold to more than 80 countries and regions. We have already set up branch offices in Guangzhou(China), Hainan(China) and Los Angeles(the United States). We have indeed built a bridge between China's aluminum wheel manufacturing and overseas aftermarket, and become one of the aluminum alloy wheel suppliers with the most resources and the most complete variety in China. We have been a trustworthy helper for customers and a good business partner for manufacturers.

www.jihoosh.com

INTRODUCTION



The company takes advantages of its own platform resources, considering the demand of customers and the market, chooses the most appropriate and high-quality production base and dedicates excellent quality, competitive price, on-time delivery and the most perfect service to customers.

The company has more than 2000 sets of wheel molds ranging in size from 6 inches to 36 inches, and annually develops more than 300 sets of new wheel molds including aftermarket, off-road, SUV, ATV, motorcycle wheels. etc., and provides professional export certificates like ISO, TS16949, VIA, TUV, DOT, etc.

The company has been the vice president unit of China Aluminum Wheel Quality Institute for three consecutive years, the six-star member unit of CAW aluminum wheel and the excellent aluminum wheel brand dealer.

We strive for the new born, remain true to our original aspiration, eager to innovate, and adhere to “quality first and service first”. Under the new situation, We will fulfill our mission, stay positive, undertake our responsibility, move forward together and create new achievements!

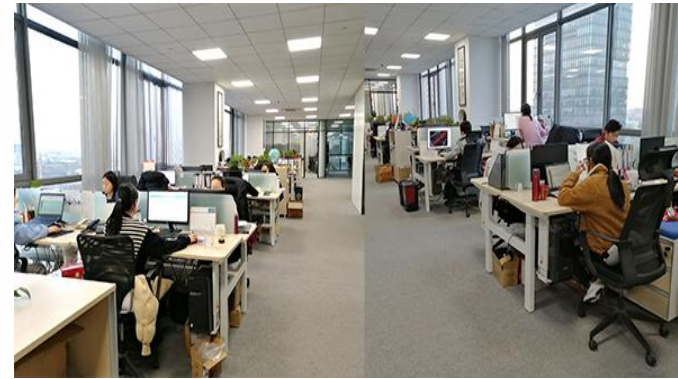
ENVIRONMENT



The company is located in the Noble International Center, the western part of Shanghai Xinzhuang Business District which is the key strategic support area of Shanghai, together with the Great Hongqiao and Lujiazui District, forms the golden triangle of high-end business in Shanghai. The warehouse center is located in Minhang, Shanghai, covering an area of more than 3000 square meters.



Corporate HQ



Office Environment



Warehouse Center



Warehouse Center

BRANDS



“Realux” has a big harvest in Southeast Asia, and “Jihoo” has started to show results in Europe and the United States!

Jihoo & Realux



R&D CAPABILITY



According to the differentiated demands of the global market, the company's R&D team has independently developed more than 200 new products, which are deeply loved by customers in Southeast Asia and the United States.



AS9996



AS9992



AS9993



AZ9987

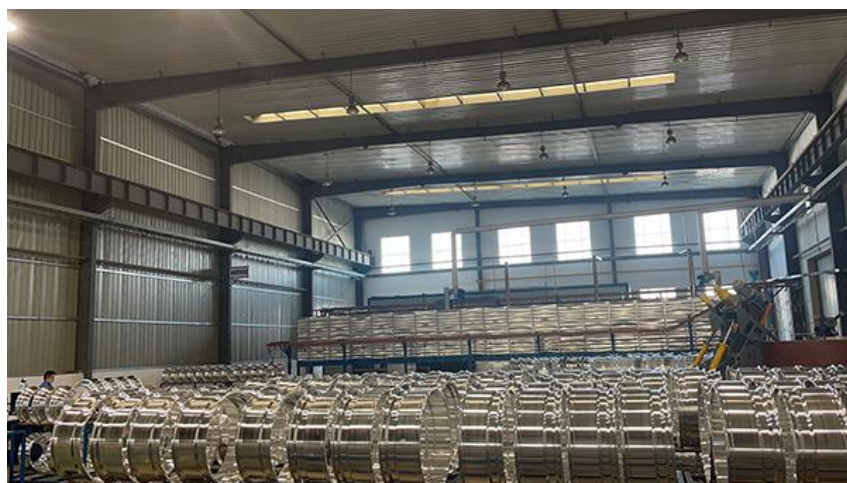


AZ0202



AZ0224

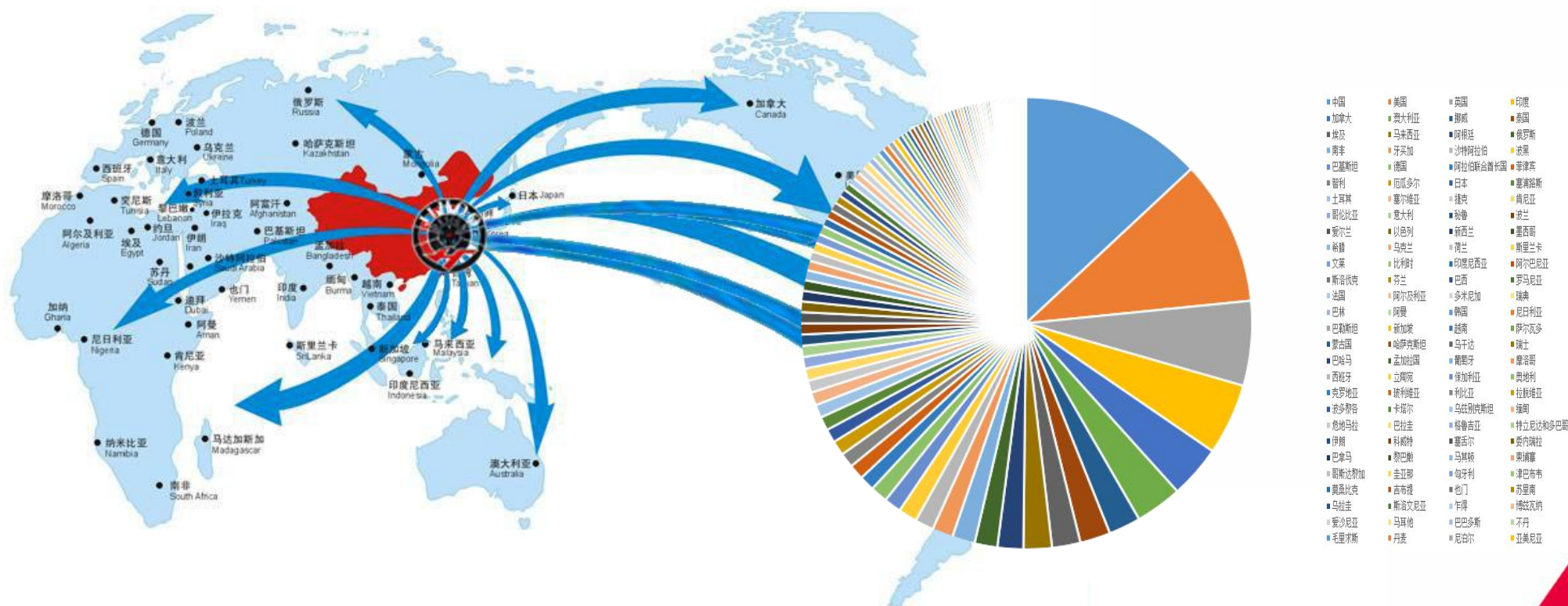
RIM&TRUCK WHEELS



MARKET STRUCTURE



Since its establishment in 2002, The company has been committed to the best aluminum alloy wheels and services for customers. Our products are successfully sold to Southeast Asia and other neighboring countries. Over the years, the orders of Japanese snow wheels and the large size orders of the United States have been highly praised and recognized by customers, with more and more repeat orders being placed. To the present day, our products have been exported to more than 80 countries and regions.



OUR STRENGTHS



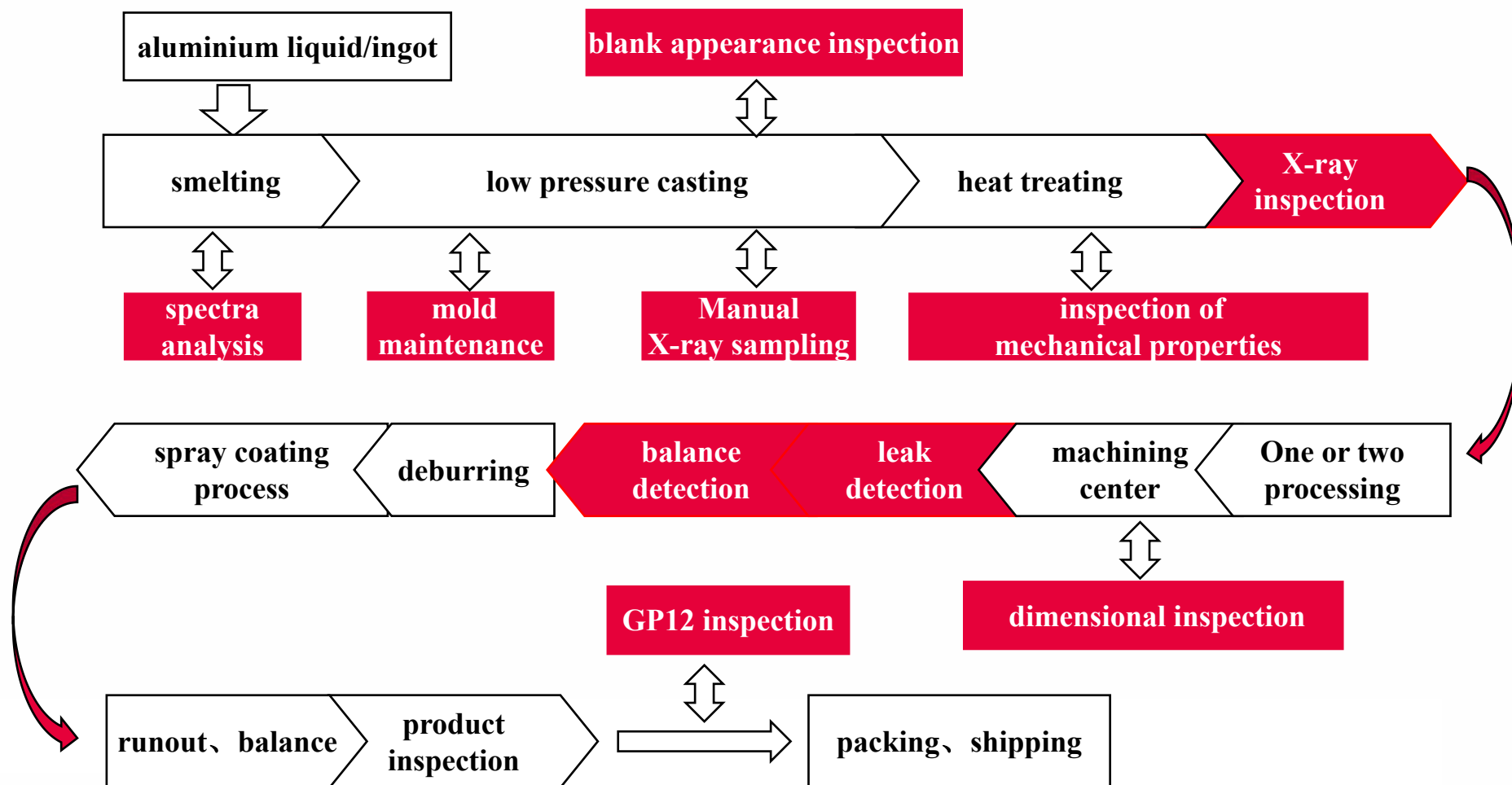
After more than 20 years' cultivation, the company has 52 high-quality production bases in China. We have a huge amount of resources like truck wheel, automobile wheel, ATV wheel, motorcycle wheel, etc., we can provide expedited channel to ensure quality and on-time delivery. The company promises a full course of follow-up service for each batch of orders and pay close attention to every step of the production process. By taking advantages of its own platform resources, the company chooses the most appropriate and high-quality production base, dedicates excellent quality, competitive price, accurate delivery time and the most perfect service to customers and saves all our customers from any worry !



1. Advanced Production Equipment

Process	Name
Casting	low pressure casting machines
X-ray	full auto X-ray monitoring system
Heat treatment	continuous heat-treating furnace
Machining	CNC lathe
On-line balancing machine	Full auto balancing machine
On-line helium leak detection machine	Helium leak detection machine
Paint line	Paint line

2. Production Technology of Low Pressure Casting



3. Auto and motorcycle lightweight parts productivity



Lightweight parts production line: large-scale automated dry-pot changer low-pressure casting machine, automatic post-process treatment, high-precision machining and lightweight production line with professional testing capacity.

4. Technological Innovation

Process innovation

Make the rim and spoke separately

Rim---formed by cold spinning technology

Spoke---Apply low-temperature and rapid-cooling casting process

Rim and spoke are combined by FSW(friction stir welding technology)

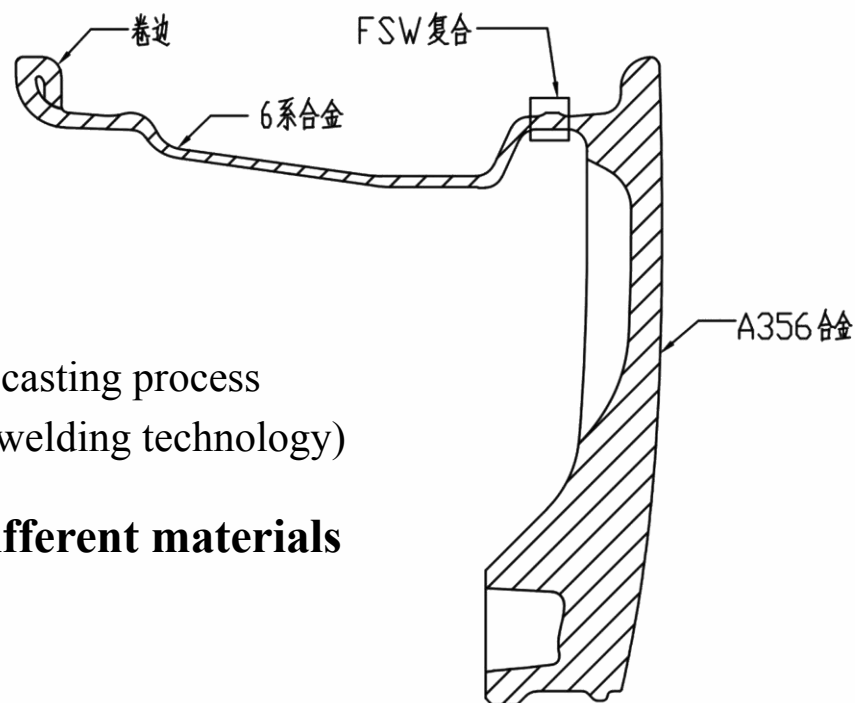
Material innovation---Realize the composite of different materials

Spoke---Use A356 alloy

Rim---Adopt 6 series hot rolled aluminum plate

Structure innovation: realize spinning and curling

The 6 series alloy plate is strengthened by cold spinning to achieve an average rim thickness of 3.0mm. At the same time, the hollow structure of the rear rim is innovated to overcome the deformation and cracking of the rear rim, and the resistance to impact and deformation of the rim is greatly improved.



5. Key Technology Spinning Equipment



The spinning equipment is the world's advanced MJC brand spinning machine imported from the United States. The equipment adopts the two-position vertical spinning process and uses the world's latest and most advanced green hydraulic system and programming control system, which has the characteristics of simple and easy handling, high efficiency, short mold-changing period, energy saving and emission reduction, and low noise etc.

The spinning technology has improved the mechanical properties of the product rim (the yield strength is increased by 25%) and has achieved the lightweight goal of the product (the weight of the product rim is reduced by more than 30%).

QUALITY SYSTEM



1. Inspection Center



Bench test



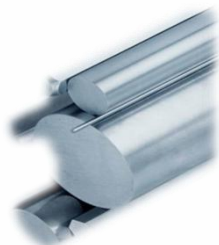
13°90° Impact tester



Radial fatigue tester



Bending fatigue tester



Material testing



Metallurgical Microscopy



Brinell hardness gauge
Breinell tester



Tensile Testing Machine



Paint film performance
testing



CASS salt spraying tester



Wit-rain



NSS salt spraying tester

2. Detection Control Points

15 Control Points



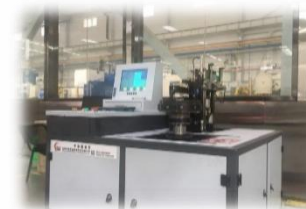
3. Inspection Equipment



Spectrum analyzer
(Shimadzu)

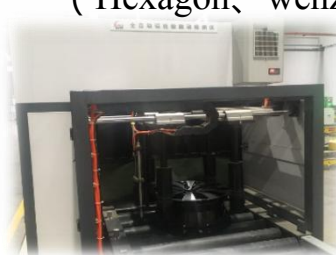


X-ray inspection
(BOSELLO、YXLON)



CMM
(Hexagon、wenzel)

Runout detecting machine
(Linmin)



Balance runout、 harmonic detection
(Leonarrdo、kokusai、Saihe、Linmin)

DELIVERY CAPACITY



1. Increased Automation



Automatic processing and testing by Robot



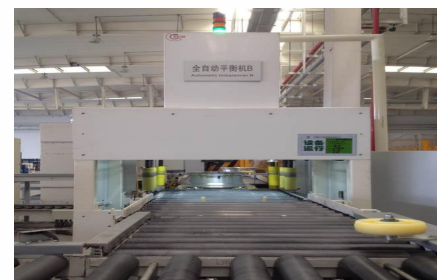
Automatic Dynamic balancing online testing



H-leakage online testing



Adopting image recognition system in packing line.



Harmonic online inspection

DELIVERY CAPACITY



1. Increased Automation



Raw wheels are transferred automatically by manipulator



Deflashing online



Automatic drilling process



Parts loading and unloading automatically in heat treatment.

DELIVERY CAPACITY



1. Increased Automation



Using robot unit in spraying powder line.



Automatic spraying powder in the whole line and separation with curing line can effectively ensure the cleanliness and reduce coating contamination.



SAMES System : ensure coating homogeneity to improve product quality and reduce paint consumption.



Pretreatment line: automatic chemicals feeding system. Automatic detection of the concentration. PH value Control System.

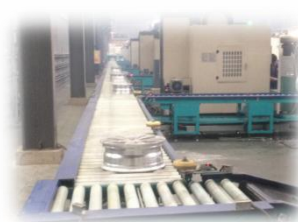


C line with three spraying paint lines, can be used for special paint (base coat+color+top coat) for one-time production.

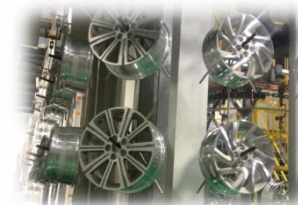
DELIVERY CAPACITY



2. Flow Process



Complete transferring line can improve turnover efficiency and reduce the bump damage.

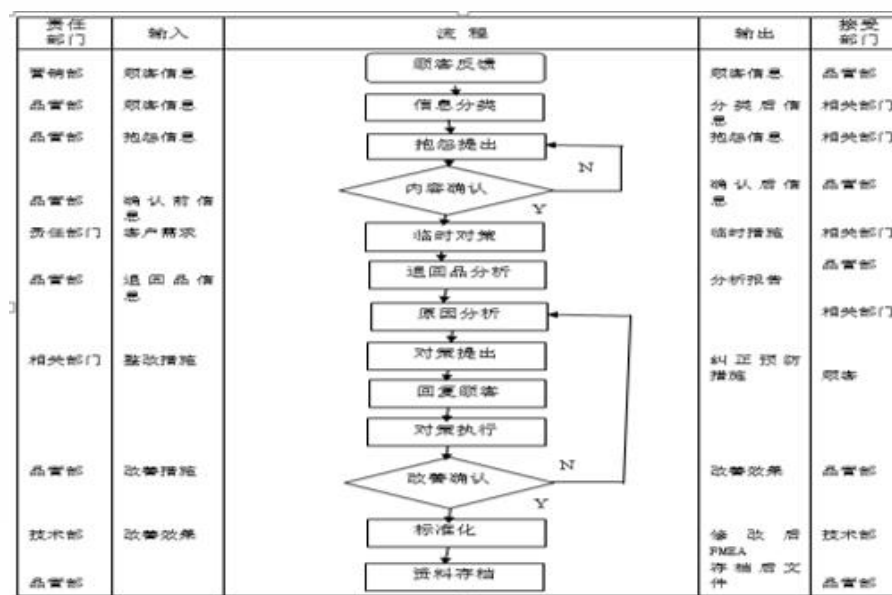


AFTER-SALES SERVICE



The handling method of customer complaints or returns is clearly stipulated to ensure that complaints or returns are properly handled, and effective corrective and preventive measures are taken to deal with customer's feedback promptly, enhance customer's satisfaction and establish a corporate image that is integrity-based and customer first.

After-sales handling process:



HONOR



The company has been the vice president unit of China Aluminum Wheel Quality Institute for three consecutive years, the six-star member unit of CAW aluminum wheel, the excellent aluminum wheel brand dealer, etc.



THANKS 感谢观看



上海劲和进出口有限公司
SHANGHAI JIHOO IMPORT&EXPORT CO., LTD.

上海市闵行区秀文路908号中铁·诺德国际中心B座
NOBLE INTERNATIONAL CENTER BUILDING B NO. 908 ,
XIUWEN ROAD, MINHANG DISTRICT, SHANGHAI.CHINA. 201101