



# WANSHUN-Paint Protection Film Series Introduction

Shantou Wanshun New Material Zhaofenglin Technology Co., LTD.



# CONTENTS



**Introduction to Paint Protection Film**

---



Wanshun PPF Construction Case

---

# What is Paint Protection Film?



Paint Protective Film (PPF) mainly consists of Thermoplastic Polyurethane (TPU) film. This film contains UV polymers, which is resistant to yellowing, and has super toughness and high abrasion resistance.

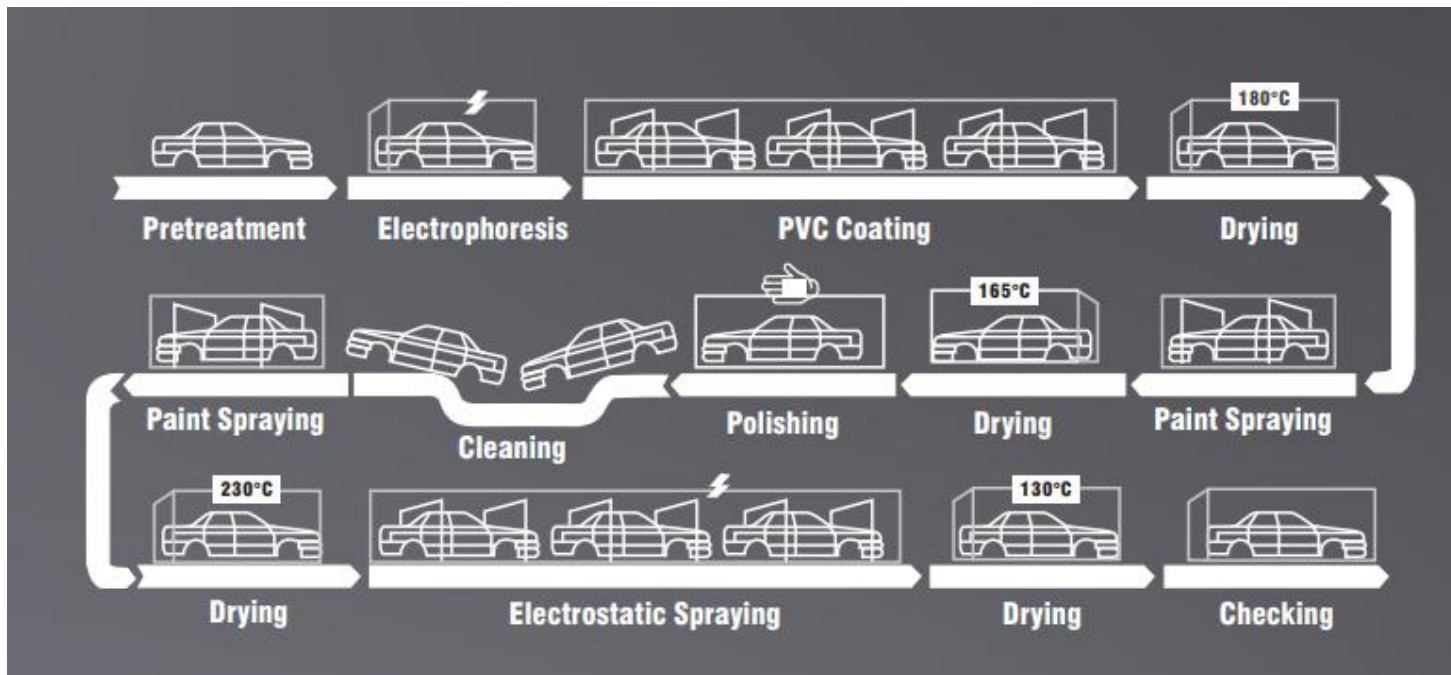
After application, it isolates the car paint from the air, protecting against acid rain, oxidation, scratches, and providing long-lasting protection for the car paint.



# Precious Factory Paint



Precious factory paint undergoes 13 processing steps and is integrally formed, which cannot be perfectly recovered by later repairs.



# Advantages of PPF



- Protect the car paint, preventing scratches from minor accidents and the impact of flying stones during driving.
- Increase the car's resale value, raising the selling price of used cars.
- Enhance the car's appearance, improving the brightness and gloss of the paint.
- Prevent external contaminants from sticking to the car paint, such as bird droppings, insect carcasses, tree sap, etc., which can adhere to and pollute the paint.



# Wanshun RIEOS PPF—Carefully selected



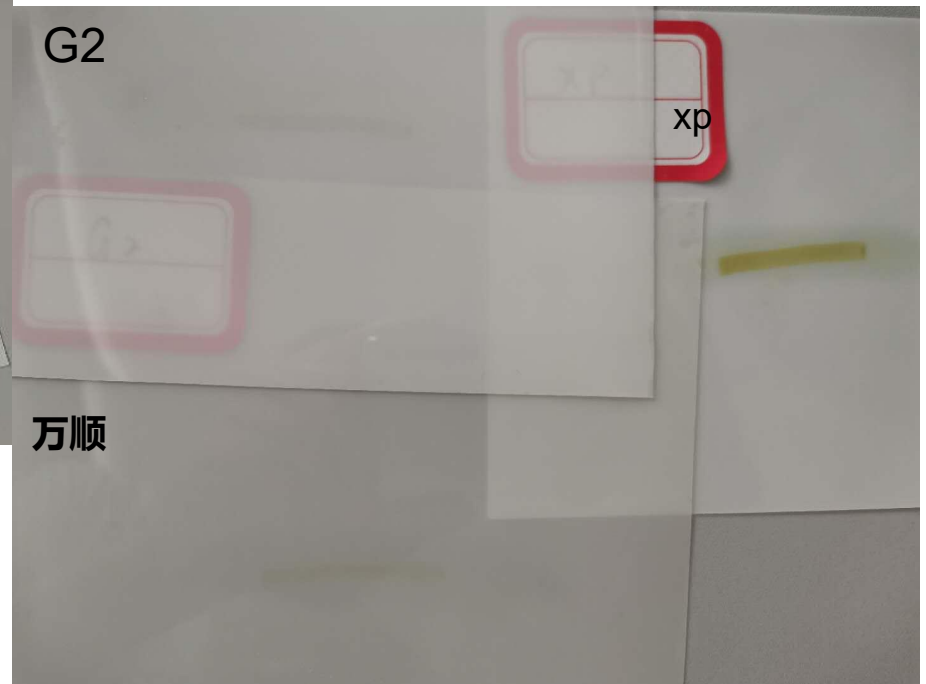
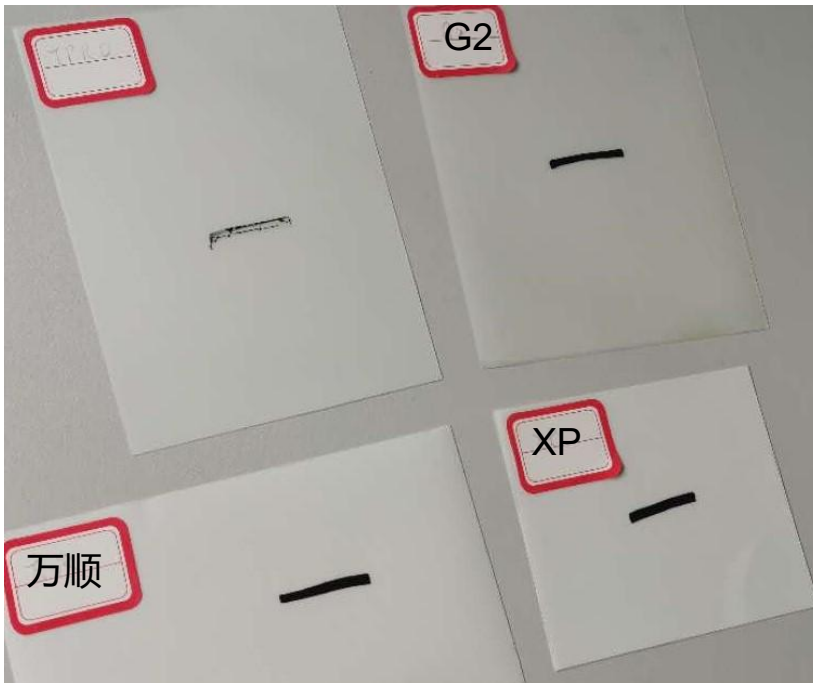
NO.	Series	Thickness	Substrate	Adhesive	Coating	Coating Type	Warranty
1	GY(S) 100	6.5MIL	Miracil	Wanshun Developed	Cashew	Hydrophilic/Hydrophobic	5 Years
	GY(S)100 PLUS	7.5MIL					
	GY(S)100 MAX	8.5MIL					
2	LV(S)100 PLUS	7.5MIL	Lubrizol	Wanshun Developed	Cashew	Hydrophilic/Hydrophobic	7 Years
	LV(S)100 MAX	8.5MIL					
3	K1	7.5MIL	Miracil	Henkel	Optical-Grade Nano-coating	Super Hydrophobic	5 Years
	K2	8.5MIL					
4	S1	7.5MIL	Lubrizol	Henkel	Optical-Grade Nano-coating	Super Hydrophobic	7 Years
	S2	8.5MIL					

Specification: 1.52m\*15m/Roll

# Main parameters tested - anti-permeation



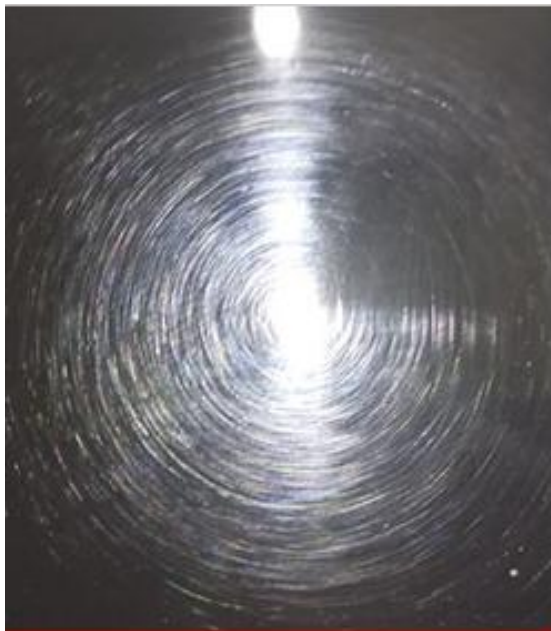
Test method: Use the oil-based Double Jie pen to draw on the TPU, let it stand for 5 minutes and then dry it to obtain the effect.





# Main parameters tested - coating self-healing

Test method: Use a copper brush to brush back and forth on the film surface 50 times. Use a film baking machine or hot water above 60 degrees.



万顺TPU

Wanshun TPU



温水修复后

After warm water repair



修复前后对比

Comparison before  
and after repair

# Main parameter data test - puncture resistance test



# CONTENTS



Introduction to Paint Protection Film

---



**Wanshun PPF Construction Case**

---

# Wanshun RIEOS -PPF construction Cases

- Meticulous car washing before construction - paint surface cleaning treatment



# Wanshun RIEOS -PPF construction Cases



Photos of engine hood film application construction



Car body film application in progress.



Headlight film application in progress.





# Wanshun RIEOS -PPF construction Cases

- Side mirror film application in progress.



Detailing treatment after film application is complete.





# Wanshun RIEOS-PPF Construction Case - Renderings





# Wanshun RIEOS-PPF Construction Case - Partial Effect





# Wanshun RIEOS-PPF Construction Case - Partial Effect

---





# Thanks

W E C L O M E T O C O O P E R A T E