

# LAUGFS SKS TYRES



**SKS - LAUGFS (SOLID GRIP) TYRES** are designed for the use of heavy duty applications. Its wide lug tread pattern and aperture side walls promote a maximum tyre life and outstanding performance.



**LAUGFS**  
INDUSTRIAL TYRES



### SKS

- Extra wide deep lug design - Longest wear and excellent traction in off road conditions
- Ride comfort - Aperture wall designed for shock absorption
- Hauler stepped tread design - Provides excellent clean out for improved off-road traction
- Fea-validated aperture design - Improves ride quality and reduces cracking

SOLID GRIP												
Tyre Size	Rim Size	EASY FIT /Normal	Tread Pattern {Smooth (SM) / Traction (TR) / Rib (R.)} (APP - Aperture ) (ND- Non Directional	Tyre Dimension				Load Capacity (kg)			Finished tyre weight(kg)	Pcs/20ft
				Inch		mm		Other Vehicles (Trailers)				
				Max Width	O.D.+/-2%	Max Width	O.D.+/-2%	Up to 6Km/h	Up to 10Km/h	Up to 25Km/h		
110/75-6	3.00-6	N	RIB LUG	4.3	12,2	108	311				5.9	
5.70-12	4.00-12	N	SKS -APP	5.7	22	144	560	1755	1595	1352	22	600
30x10-16	6.00G-16	N	SKS -APP 2A	9.1	29.4	233	746	3300	3006	2525	66.3	210
31x10-20	7.50-20	EF/N	SKS -APP	9.4	30.9	238.5	785	3600	3273	2975	63	120
31x10-20	7.50-20	EF/N	SKS	9.4	30.9	238.5	785	4235	3850	3500	64	120
33x12-20	7.50-20	EF/N	SKS	11.3	32.9	288	837	5920	5390	4900	91.5	110
33x12-20	8.00-20	EF/N	SKS	11.3	32.9	288	837	5920	5390	4900	92.9	110
33x12-20	7.50-20	EF/N	SKS- APP	11.3	32.9	288	837	5032	4582	4165	90.5	110
33x12-20	8.00-20	EF/N	SKS- APP	11.3	32.9	288	837	5032	4582	4165	91.5	110
33x12-20	7.50-20	EF/N	SKS- APP 2A	11.3	32.9	288	837	4529	4124	3749	89	110
33x12-20	8.00-20	EF/N	SKS- APP 2A	11.3	32.9	288	837	4529	4124	3749	91.2	110
33x12-20	7.50-20	EF/N	SM	11.3	32.9	288	837	5920	5390	4900	102.2	110
33x12-20	8.00-20	EF/N	SM	11.3	32.9	288	837	5920	5390	4900	103.2	110
33x12-20	7.50-20	EF/N	SM-APP	11.3	32.9	288	837	5032	4582	4165	100.5	110
33x12-20	8.00-20	EF/N	SM-APP	11.3	32.9	288	837	5032	4582	4165	101.5	110
33x12-20	7.50-20	EF/N	SM-APP 2A	11.3	32.9	288	837	4529	4124	3749	99.6	110
33x12-20	8.00-20	EF/N	SM-APP 2A	11.3	32.9	288	837	4529	4124	3749	100.6	110
34x10-20	7.50 - 20	EF/N	ND-SKS-APP 1A	9.9	33.7	252	855	5032	4582	4165	92.8	108
36x12-20	7.50 - 20	N	SKS -APP 2FA	12.0	36.2	305	919	4800	4400	4000	120.5	84
36x12-20	8.00-20	N	SKS -APP 2FA	12.0	36.2	305	919	4800	4400	4000	122	84
13.00-24	8.5-24	N	SKS- APP 2A	12.8	50.4	325	1280	7700	7000	6350	287	49
14.00-24	8.5-24	N	SKS- APP 2A	13.9	52.4	352	1332	11100	10100	9300	325	30

# SKS SUPER SOLID

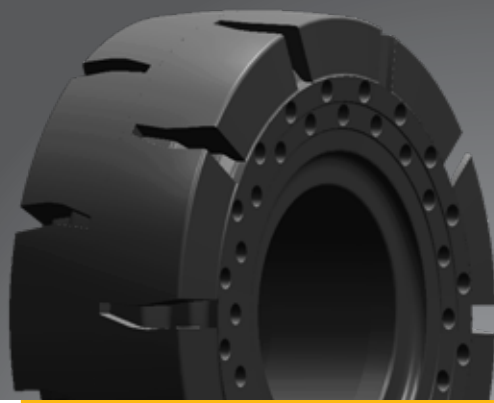
- 13.00 - 24 / 14.00 - 24



**LAUGFS SUPER SOLID TYRES** are designed for tough on the road and off the road construction machineries and vehicles. It is designed with an extra deep directional tread and deep lugs to provide traction and durability. The wide-tread pattern and extra thick sidewall prevents tire distortion while cornering. Its self-cleaning design keeps the tyre clean of mud and dirt, and makes the machine more energy efficient.



**LAUGFS**  
INDUSTRIAL TYRES



LOADER GRIP



SOLID GRIP

- An open spaced traction pattern with self-cleaning property provides traction capability resulting in ease driving on heavy dirt and mud conditions.
- Wide based flat tread with large contact area for even distribution of ground contact pressure.
- Tough carcass & special tread compound to withstand cuts, bruises in severe operating conditions for increased service life.
- Its two row Aperture sidewall design makes excellent cushion function and driving comfort.

SKS -Super Solid												
Tyre Size	Rim Size	Easy Fit /Normal	Tread Pattern	Tyre Dimension				Load Capacity (kg)			Finished tyre weight(kg)	Pcs/20ft
				Inch		mm		Other Vehicles (Trailers)				
				Max Width	O.D.+/- 2%	Max Width	O.D.+/- 2%	Up to 6Km/h	Up to 10Km/h	Up to 25Km/h		
13.00-24	8.50-24	N	SKS- APP 2FA	12.8	50.4	325	1280	7700	7000	6350	280	49
14.00-24	8.50-24	N	SKS- APP 2FA	13.9	52.4	352	1332	11100	10100	9300	321	36
17.5-25	14.00 - 25	N	LOADER GRIP	17.3	52.8	440	1340	9680	8800	8000	496	20
20.5-25	17.00 -25	N	LOADER GRIP	20.9	58.7	530	1490	10890	9900	9000	782	16
20.5-25	17.00 -25	N	SMOOTH	20.9	57.9	530	1470	10890	9900	9000	803	16
23.5-25	19.50 -25	N	LOADER GRIP	22.8	63.4	580	1610	12100	11000	10000	1076	12
23.5-25	19.50 -25	N	LOADER GRIP +	22.8	63.4	580	1610	12100	11000	10000	1100	12
23.5-25	19.50 -25	N	LOADER SM	22.8	62.6	580	1590	12100	11000	10000	1083	12

# LAUGFS

## DUAL ASSEMBLY

### READY FOR ANYTHING



**DUAL ASSEMBLY TYRES** (Solid twin wheels) are specially designed for excavators running on waste and recycling locations. The assembly consists of a pair of tyres mounted on rims with a spacer in between to avoid any dual touching. This twin assembly provides superior tyre life as well as resistance against damages and punctures.





DUAL ASSEMBLY OPTIMA



DUAL ASSEMBLY STD

- Innovative tread design - offers excellent traction
- Reinforced sidewall protection - eliminates punctures
- Large contact area - reduces tyre stress and uneven wear for maximum durability

**RESILIENT TYRES - DUEL ASSEMBLY - STANDARD**

Tyre Size	Rim Size	EASY FIT /Normal	Tread Pattern {Smooth (SM) / Traction (TR) / Rib (R.)}	Tyre Dimension				Load Capacity (kg)					Finished tyre weight(kg)	Pcs/20ft	
				Inch		mm		Counter balanced lift Trucks		Other Vehicles (Trailers)					Static 0 km/h
				Max Width	O.D.+/- 2%	Max Width	O.D.+/- 2%	Load Wheels up to 25Km/h	Steering Wheels	Up to 6Km/h	Up to 10Km/h	Up to 25Km/h			
9.00-20	7.00-20	N	TR	9.0	39.0	229	990	5400	4500	5400	4905	4500	6795	123.00	100
10.00 - 20	7.00 - 20	N	TR	9.9	41.1	251	1045	6000	5000	6000	5450	5000	7550	173.20	90
10.00 - 20	7.50 - 20	EF/N	TR	9.9	41.1	251	1045	6000	5000	6000	5450	5000	7550	175.60	90
10.00 - 20	8.00-20	N	TR	9.9	41.1	251	1045	6000	5000	6000	5450	5000	7550	177.80	90
11.00 - 20	7.00 - 20	N	TR	9.9	41.1	251	1045	6000	5000	6000	5450	5000	7550	173.20	90
11.00-20	7.50 - 20	EF/N	TR	9.9	41.1	251	1045	6000	5000	6000	5450	5000	7550	175.60	90
11.00 - 20	8.00-20	N	TR	9.9	41.1	251	1045	6000	5000	6000	5450	5000	7550	177.80	90
12.00 - 20	8.0 - 20	N	TR	11.2	43.2	285	1098	7500	6300	7560	6885	6300	9515	211.00	70
12.00 - 20	8.5 - 20	N	TR	11.2	43.2	285	1098	7500	6300	7500	6885	6300	9515	212.00	70

**RESILIENT TYRES - DUEL ASSEMBLY- OPTIMA**

Tyre Size	Rim Size	EASY FIT /Normal	Tread Pattern {Smooth (SM) / Traction (TR) / Rib (R.)}	Tyre Dimension				Load Capacity (kg)					Finished tyre weight(kg)	Pcs/20ft	
				Inch		mm		Counter balanced lift Trucks		Other Vehicles (Trailers)					Static 0 km/h
				Max Width	O.D.+/- 2%	Max Width	O.D.+/- 2%	Load Wheels up to 25Km/h	Steering Wheels	Up to 6Km/h	Up to 10Km/h	Up to 25Km/h			
10.00 - 20	7.50 - 20	EF/N	TR	9.8	40.8	248	1036	6000	5000	6000	5450	5000	7550	151.7	90
10.00 - 20	8.00 - 20	EF/N	TR	9.8	40.8	248	1036	6000	5000	6000	5450	5000	7550	152.7	90



LAUGFS Corporation (Rubber) Limited,  
 No.101, Maya Avenue, Colombo 6, Sri Lanka.  
 Tel: +9411 5 566 222 | e mail: info.rubber@laugfs.lk  
 Web: www.laugfsindustrialtyres.lk | www.laugfs.lk