

# PRODUCT BROCHURE



# GSP NETWORK

---

## GSP Group Headquarter

No.1 GaoXiang Road, Wenzhou, China

**Tel:** 86-577-8629-3120

**Email:** internationalsales@gsp.cn

## GSP Germany Cologne (Business Center)

An der Hasenkaule 10, Gebäude 11, 50354 Hürth, Germany

**Tel:** 49-2233-8088-411

**Email:** info@gsp-europe.com

## GSP Germany Hamburg (Distribution Center)

Werkstrasse1, 22844 Norderstedt, Germany

**Tel:** 49-406-4669-9460

**Email:** gsp@elbex-hamburg.de

## GSP Poland Gdansk (Distribution Center)

Elbląska 130, 80-718 Gdańsk, Poland

## GSP N.A South Carolina (Business Center / Distribution Center)

2725 New Cut Road, Spartanburg, SC 29303, USA

**Tel:** 1-864-578-6900

**Fax:** 1-864-578-6978

**Email:** info@gsp-na.com

## GSP N.A Arizona (Business Center / Distribution Center)

950 N. 119th Ave. Suite 100, Avondale, AZ 85323, USA

**Tel:** 1-480-418-3405

**Fax:** 1-562-376-8550

**Email:** info@gsp-na.com

## GSP L.A. Florida (Business Center)

2600 S. Douglas Rd., PH 10, Coral Gables, FL 33134, USA

**Tel:** 1-305-446-7702

**Email:** info@gsplatinamerica.com

## GSP Mexico Queretaro (Business Center)

Manuel Gomez Morin, No EXT. 3960, PISO 1 OFICINA 1D,  
Centro Sur. Queretaro, C.P.: 76090

**Tel:** 52-442-2449414

**Email:** info@gsplatinamerica.com

## GSP Mexico Queretaro (Distribution Center)

Privada del marqués lote 4a1 bodegas 6, 7 y 8, IV sección,  
Parque Industrial Querétaro, CP. 76226

 **Facebook:** GSP Automotive Group

 **LinkedIn:** GSP Automotive Group

 **Youtube:** GSP Automotive Group

 **Instagram:** gsp\_automotive\_group



LinkedIn



Facebook



Youtube



Instagram

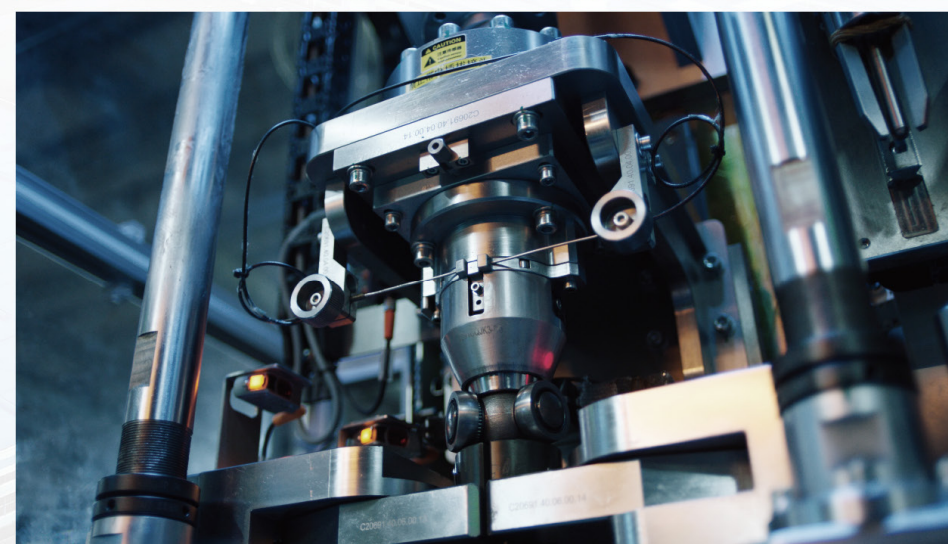
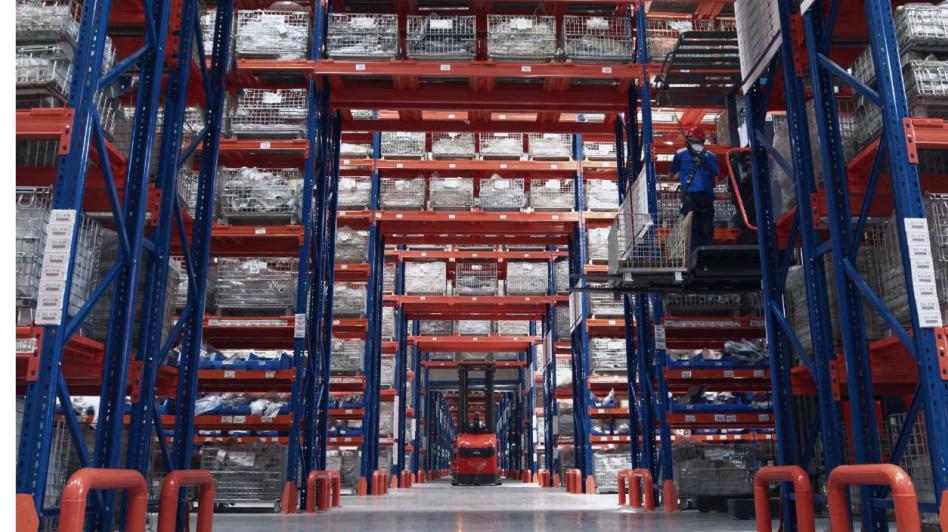


## GSP AUTOMOTIVE GROUP

GSP Automotive Group is a leading manufacturer for automotive parts for the worldwide aftermarket. Since 1985, GSP manufactures constant velocity joints, drive shafts, hub assemblies, rubber-to-metal parts, shock absorbers as well as steering & suspension parts.

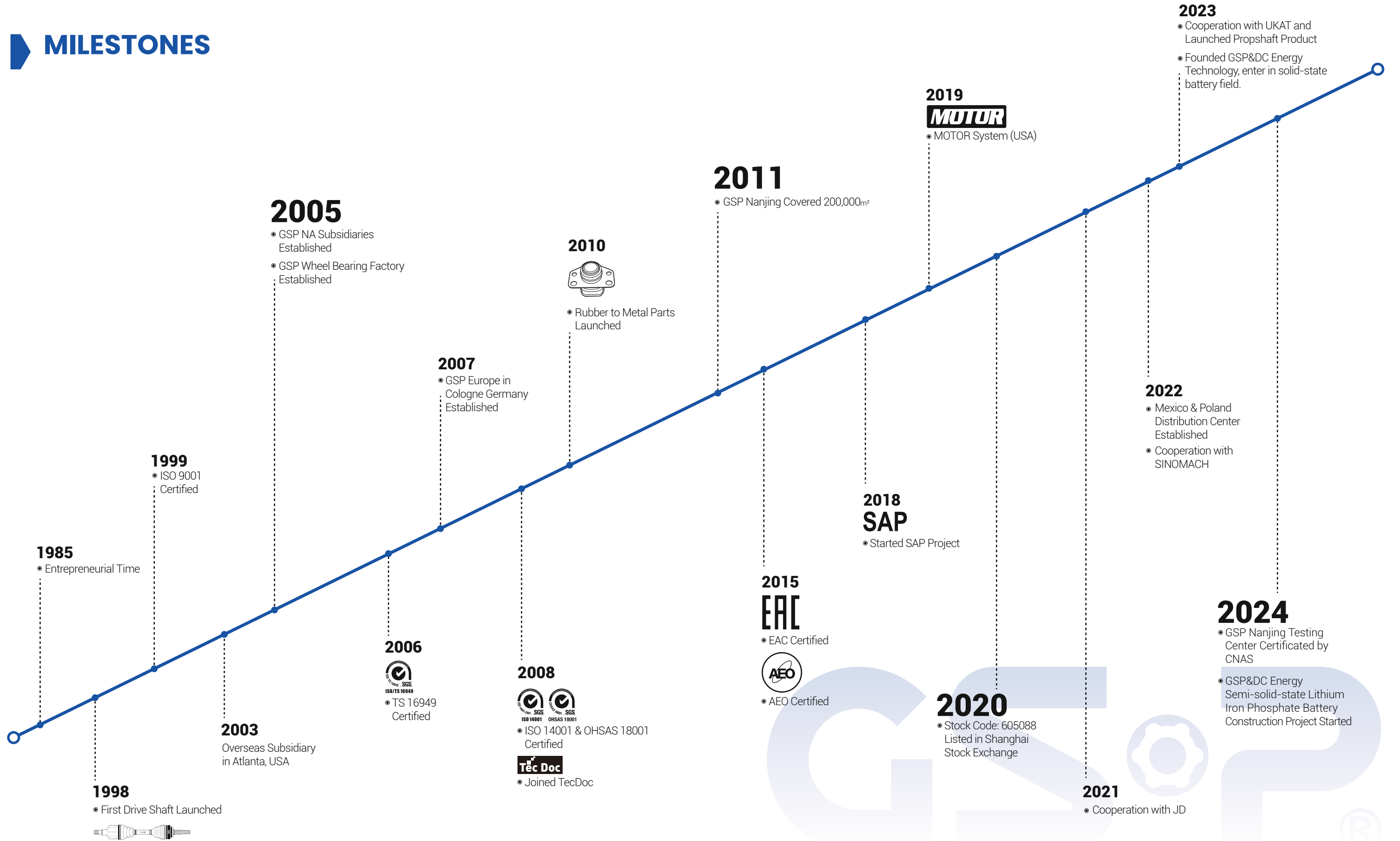
The GSP team supports over 120 countries and regions. With our diverse range of native professionals, we bring customer care and expertise to each market.

With our first to market strategy, we continue to develop a wide range of products and applications to cover the mainstream of car parc around the world, ensuring the best product for partners. Certifications include: IATF16949, ISO 14001 and ISO45001.



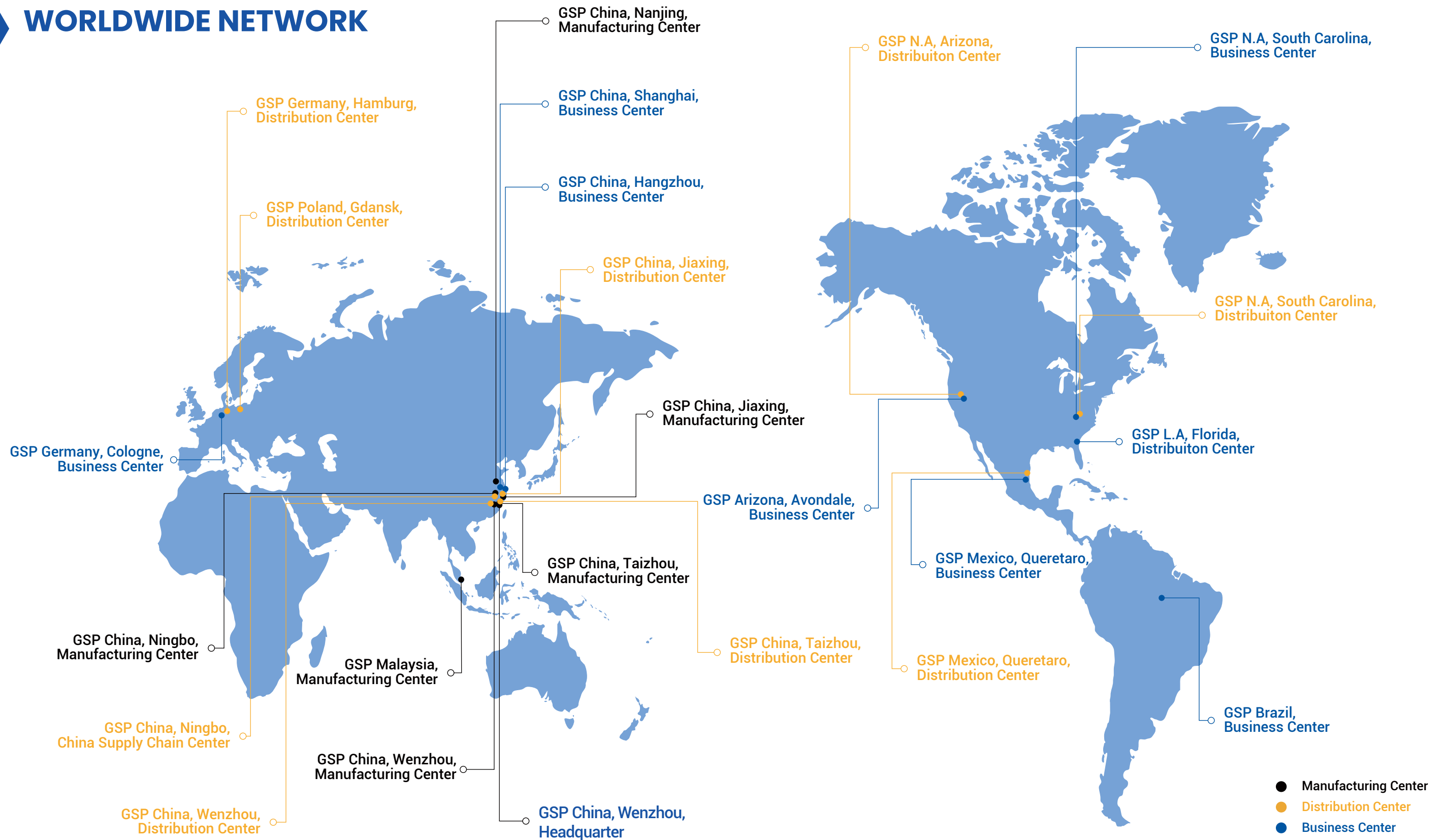


## MILESTONES



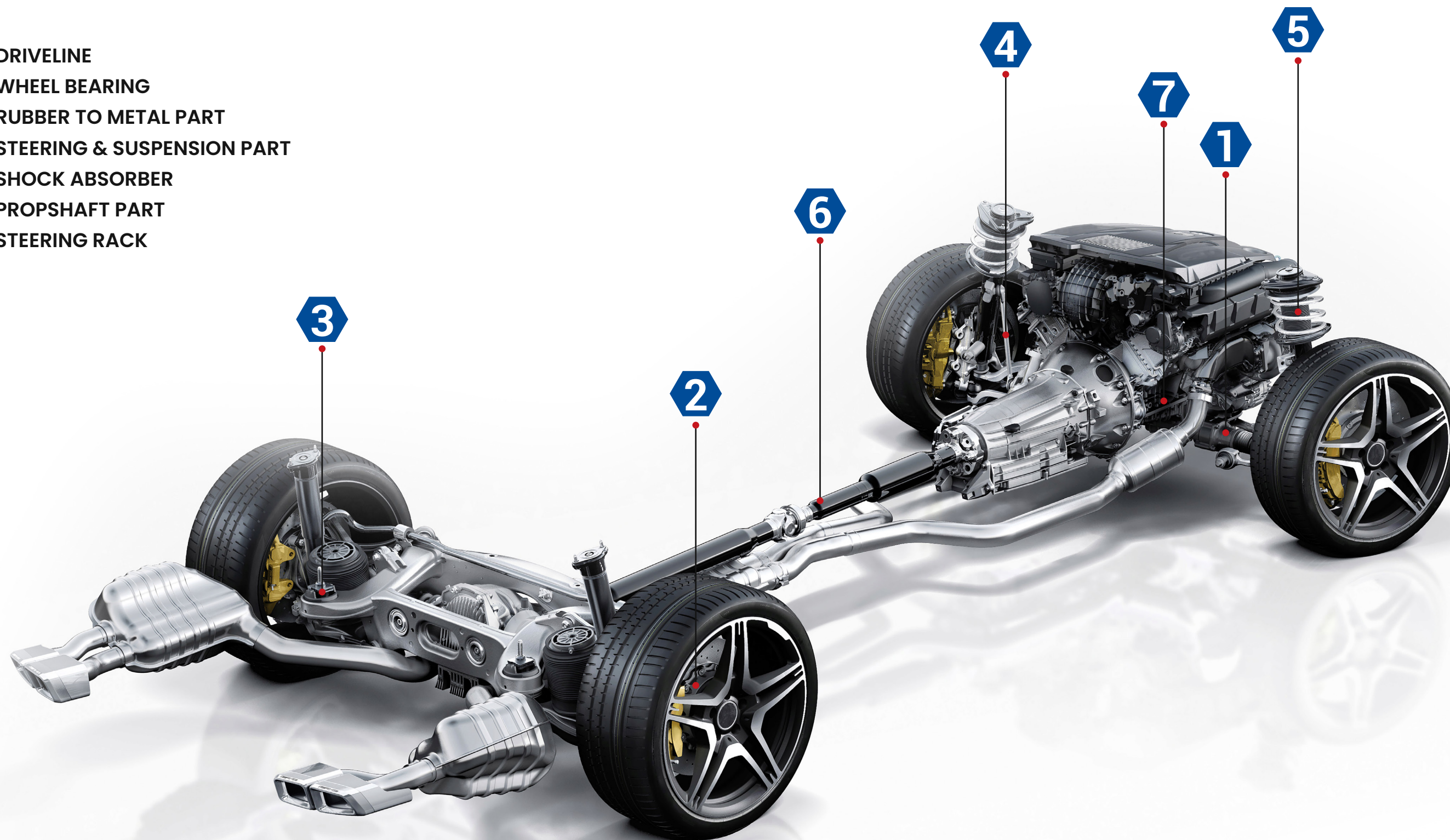


## WORLDWIDE NETWORK

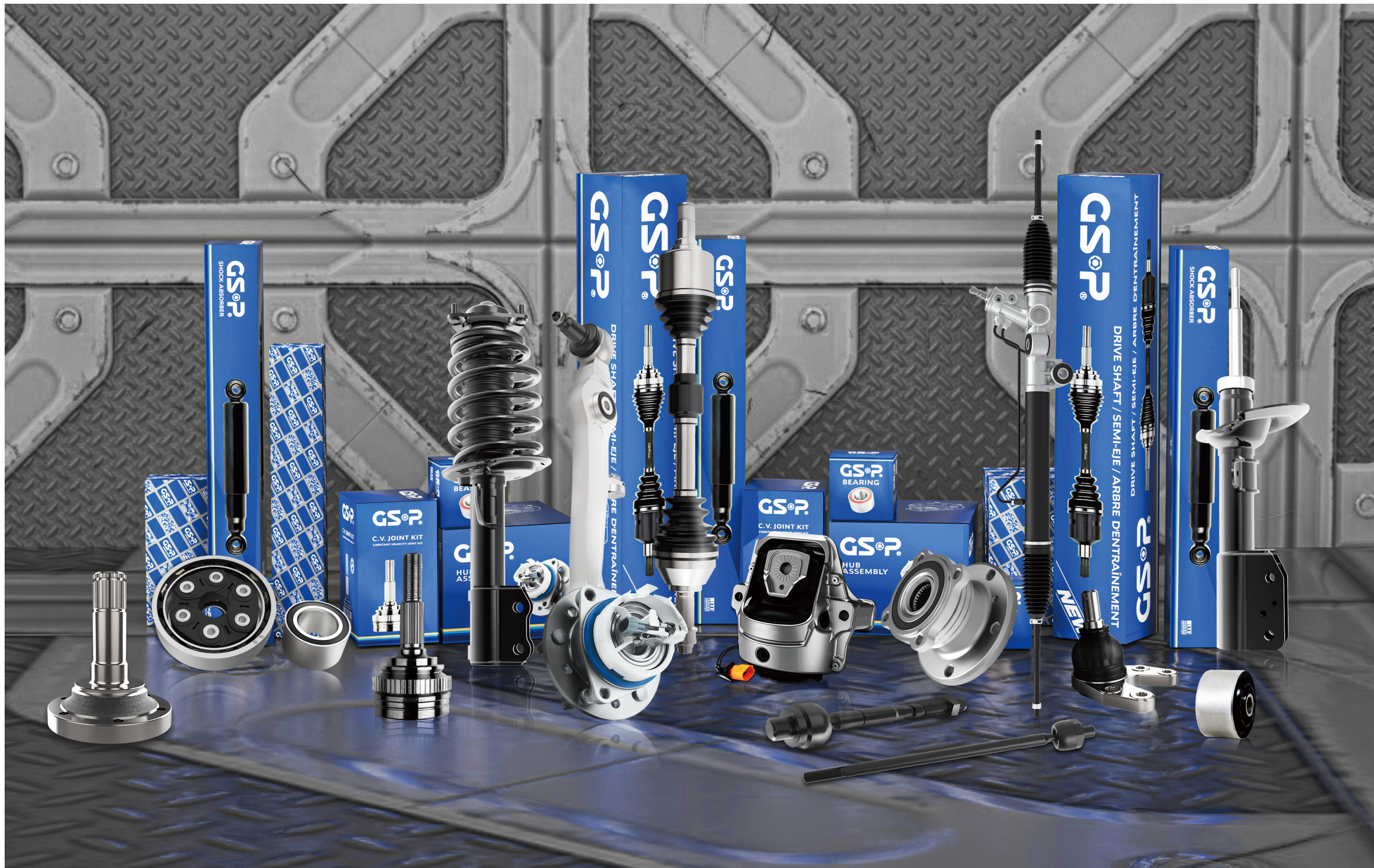


## PRODUCT LINES

- 1 DRIVELINE
- 2 WHEEL BEARING
- 3 RUBBER TO METAL PART
- 4 STEERING & SUSPENSION PART
- 5 SHOCK ABSORBER
- 6 PROPSHAFT PART
- 7 STEERING RACK









## DRIVELINE

**GSP Driveline offering includes front and rear half shafts, propshafts and rear axle shafts.**

- High-quality materials are utilized to ensure a long service life. Premium grade materials combined with innovative technology provides proper fit, form, and function.
- GSP offers over 15,000 SKUs and develops new products on a monthly basis.
- Product range covers 95% of vehicle applications in the market.





## DRIVELINE

### C.V.JOINTS & DRIVE SHAFTS

Engineered to OE specifications for proper fit, form and function.



Drive Shaft

All products go through vigorous testing including fatigue life test, torsional fatigue test, static peripheral clearance test, and dynamic balancing test.



C.V. Joint

State of the Art equipment is used in our heat treatment process to ensure high strength, hardness, and toughness.



Eight-groove

Both six-groove and eight-groove are in range for outer C.V. joints.



Stub Axle-Flange

High quality flanges connect the drive shaft to the differential end for transfer power to the wheel.



Rear Axle Shaft

Durable differential shafts for rear vehicle wheels.



Stub Shaft

Unique development of V.A.G. can be found mainly on transporter and van applications.



AAR

Tripod structure with thin-wall housing matched to OE standards.



Hollow Shaft

Increases strength and durability of drive shaft, while reducing stress on the drivetrain.



C.V. Joint Repair Kit

- GSP rubber boots are provided with clamps and grease for easy replacement.
- The high quality rubber material has a better resilience in high and lower temperatures.
- Excellent grease lubrication assures that drive shafts work in various conditions.
- TPE boot material is also provided per customers' requirements.



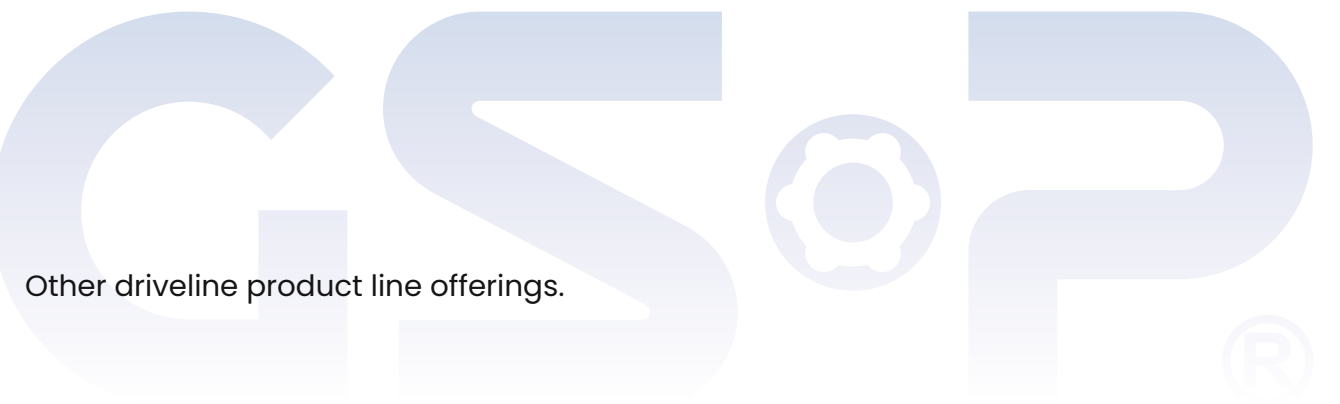
Intermediate Shaft

Premium intermediate shafts connect the drive shaft to the differential end for a complete solution.



Propshaft

100% balanced, radial run-out inspection and GP12 containment procedures guarantee vibration and noise elimination.



Other driveline product line offerings.

## PROPSHAFT PART

### Key Features:

- Engineered in accordance with OE standards to ensure durability, while eliminating noise and vibration (NVH).
- Optimized with a high-precision housing and premium internal components to increase longevity.
- High-performance grease provides better wear-resistance and optimum performance at high temperatures.
- Special seal for universal joints ensures a long service life.
- 100% balanced, radial run-out inspection and GP12 containment procedures guarantee vibration and noise elimination.



Flexible Coupling Kit

GSP uses an innovative way of cord inlay and reeling to deliver superior durability and eliminate NVH.



Center Bearing Kit

All components go through rigorous tested to ensure durability.



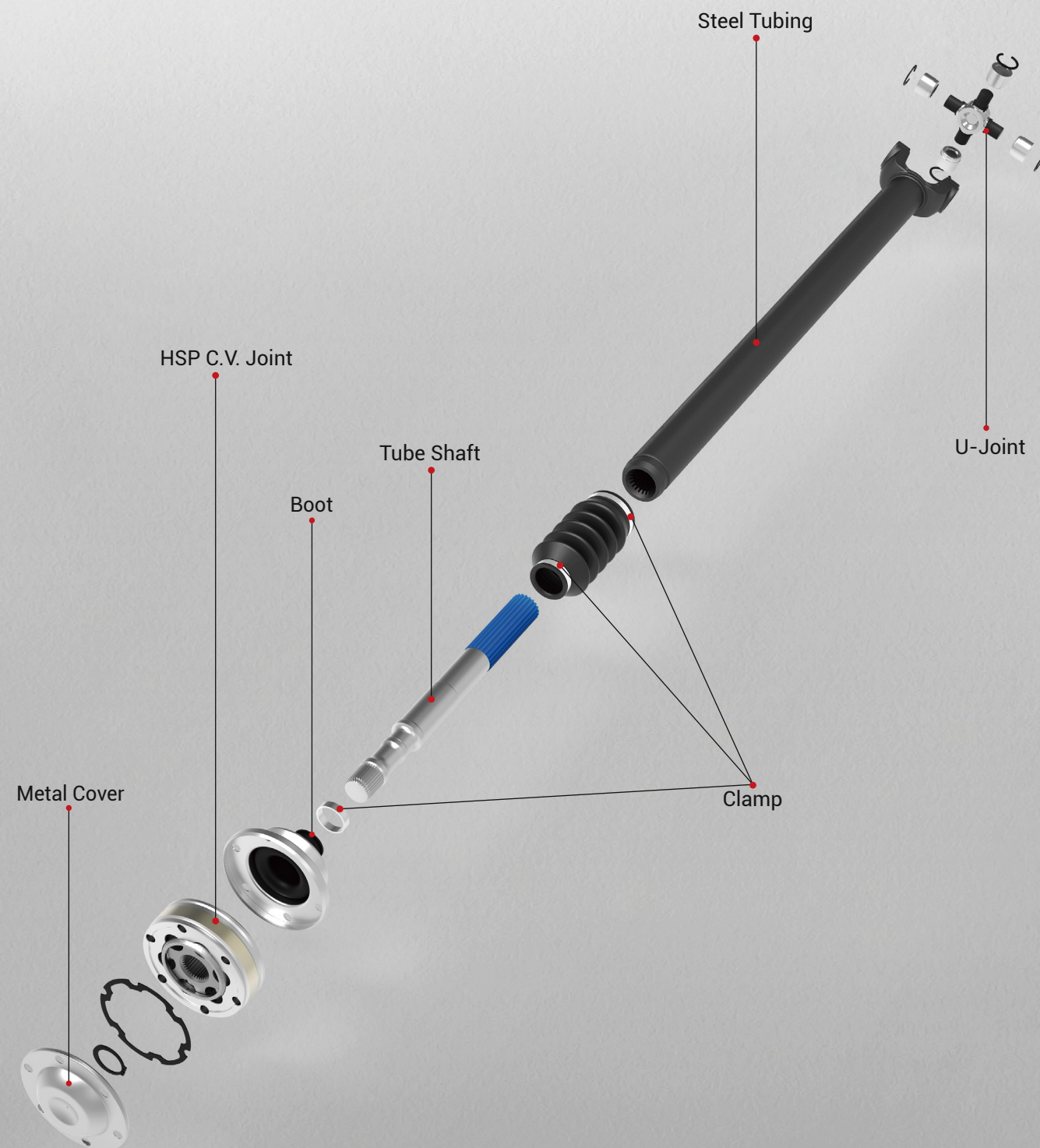
Joint, Propshaft

Reverse-engineered in accordance to OE standards.



Universal Joint

- Excellent quality of NBR material of Seal
- Case-hardened bearing cup
- High quality alloy steel cross
- Precision-ground Needle bearing





## DRIVELINE

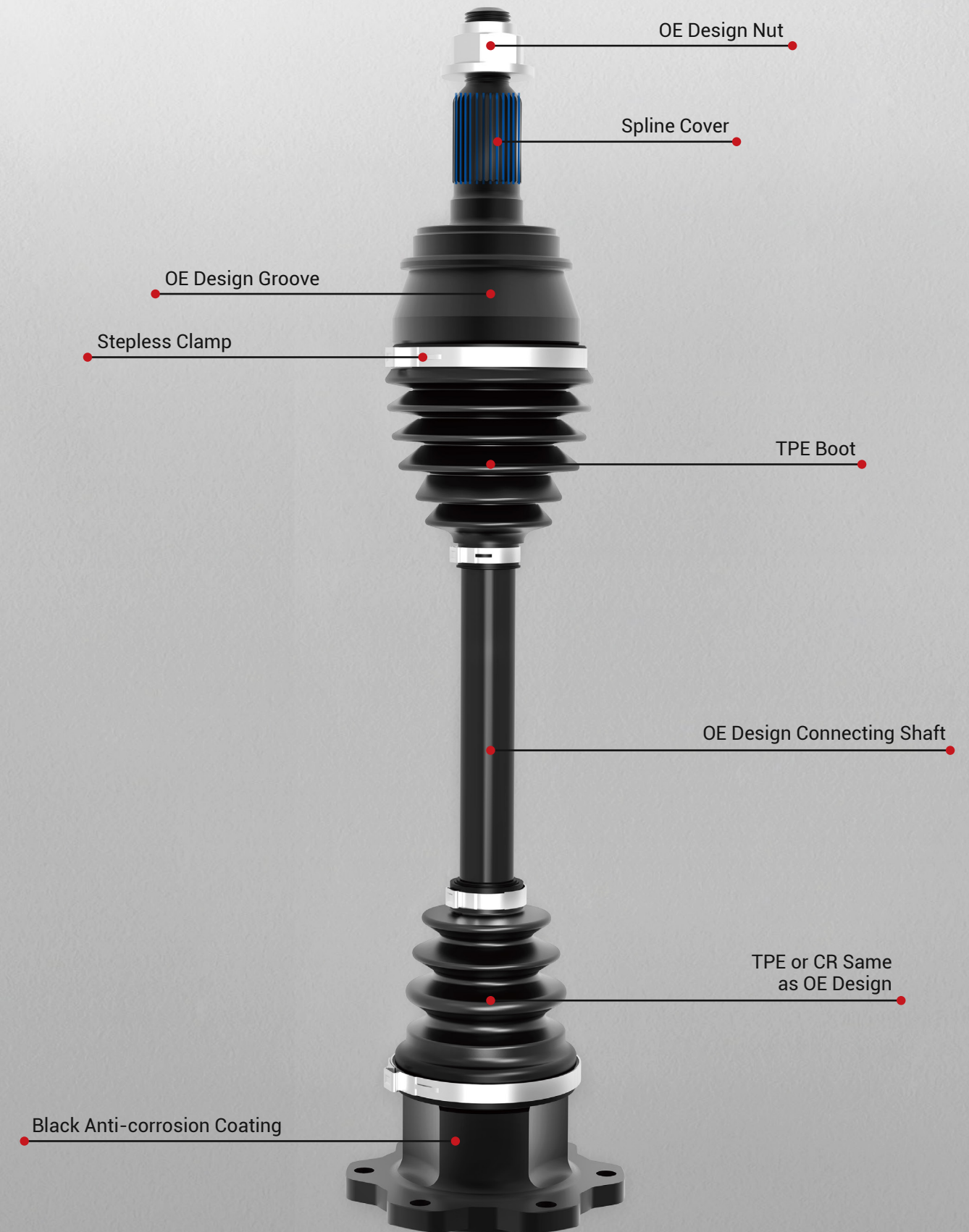
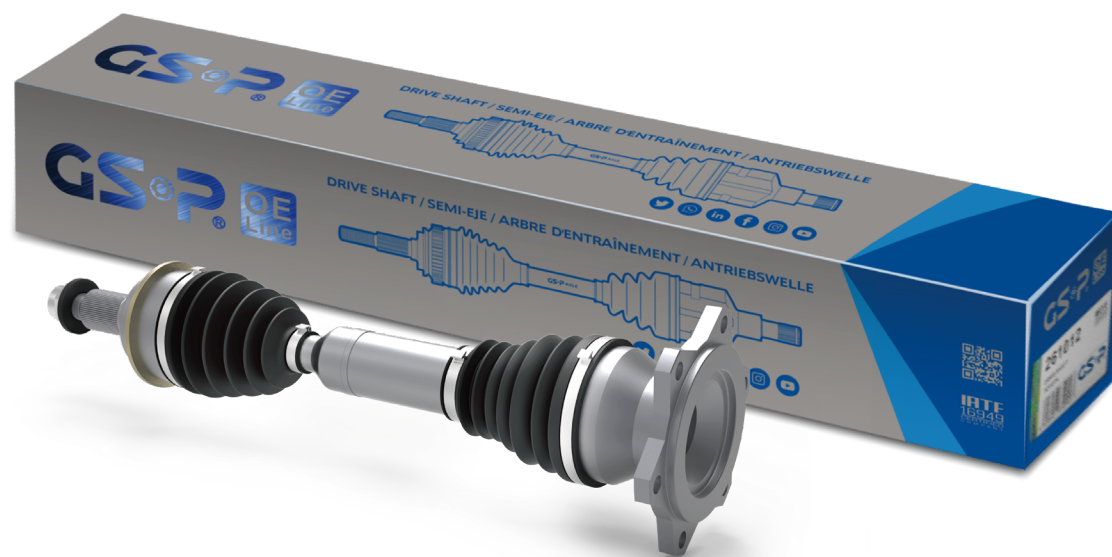
### PREMIUM DRIVE SHAFT WITH OE-LINE.

- Meets or exceeds OE standards.
- Range of 200 drive shafts.
- New box design.
- New part number ending with OL.



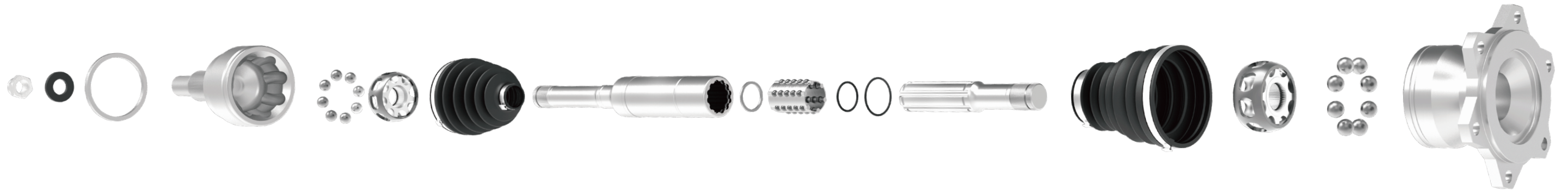
#### Key Features:

- 100% in-line with OE specifications for hassle-free installation and maximum performance, even under extreme working conditions.
- TPE boots prevent deformation, wear, swelling and leakage.
- High-performance grease provides better wear-resistance and rejection of heat.
- OE specification clamps to optimally tighten TPE or CR boot with 100% sealing and zero leakage.
- All necessary hardware is included in the box.
- Premium Packaging offers protection to avoid damage during transport.



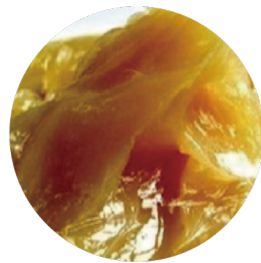
## DRIVELINE

### PREMIUM DRIVE SHAFT WITH OE-LINE



TPE Boot

- Weight reduction of 50%.
- Swing angle 0°-50°.
- Lower deformation.
- Lower centrifugal expansion particularly at high speeds.



Premium Grease

- Range -30°C ~ 120°C.
- Better abrasion resistance.
- Lower frictional resistance.
- Longer service life.



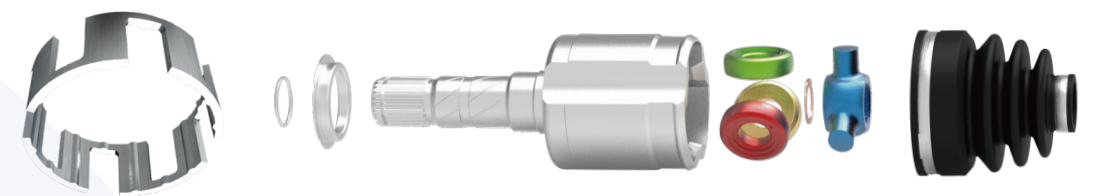
Hollow Shaft

Increased strength and durability while reducing stress on the drivetrain.



Coating Process

- Protection from dirt and other debris.
- Corrosion resistant.



Seal Protector

Additional features like spline cover and seal protector to ensure a safety transport and avoid damages.



## WHEEL BEARING

- Due to our diverse range of product offerings, GSP manufactures products can be customized to accommodate different market requests.
- ABS sensor are satisfied to guarantee a trouble-free installation and proper function over the product lifetime.
- GSP's multi-lip seal effectively keeps in grease and high pressurized nitrogen, isolates external dust, and ensures a longer service life.

**Three generations of GSP wheel bearings are available covering 95% of models on the market.**

- New product developments based on OE specifications.
- GSP offers over 7,000 SKUs.
- All new developments must undergo numerous tests to ensure outstanding performance, including longevity, environment, bending fatigue, and starting torque tests.
- GSP includes optimized and new accessory kits where applicable to ensure a hassle-free installation.

### History of Wheel Bearings:



GEN. 1 WHEEL BEARING



GEN. 2 HUB ASSEMBLY

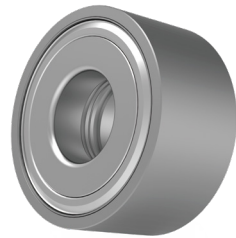


GEN. 3 HUB ASSEMBLY





## WHEEL BEARING



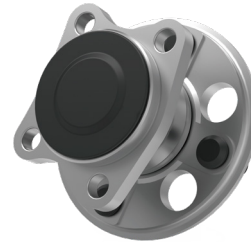
GEN. 1 WHEEL BEARING

- Level G10 balls.
- Highly precision rotating.
- Reliable axial clearance control.



GEN. 2 HUB ASSEMBLY

- Multiple-lips seal design.
- Advanced sealing technology.
- Precise fitment.



GEN. 3 HUB ASSEMBLY

- Enhanced orbital formed head.
- ABS signal multi distance verification.
- Improved safety.



Knuckle Assembly

- High quality knuckle assembly.
- Hassle free installation.
- No special tools required.
- For wheel hub and Gen-1 wheel bearing.



Wheel Bearing Kit

Level G10 balls for precise rotation.



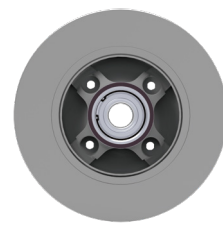
CV/Heavy Duty Hub Assembly

Innovative technology and state of the art equipment are used to manufacture high quality products.



Wheel Hub

A wheel hub is the central part of a wheel which connects the axle to the wheel itself.



Brake Disc

Costs less than OES without sacrificing quality.



Drive Shaft With Hub Assembly

Our drive shafts are manufactured to OE specifications with an optimized design.

## ABS SENSOR



ABS Wheel Speed Sensor

- Premium quality components.
- Semiconductor from Honeywell and NXP Melexis Allegro.
- High-quality cable component.
- Long service life.



ABS Wheel Speed Sensor

- Precise fit, form, and function.
- Easy installation.
- All ABS sensors are 100% tested.



ABS Wheel Speed Sensor

- Premium quality components such as semiconductor from Honeywell and NXP Melexis Allegro.
- High temperature resistance up to 180°C.
- 100% functional tests to ensure consistently high quality.
- Long service life.

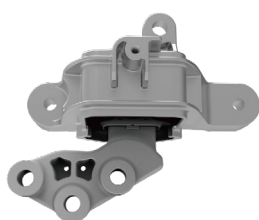


## RUBBER TO METAL PART

**GSP offers rubber to metal parts for popular applications, including American, European, Asian cars, LCV, SUV, hybrid and electric vehicles.**

- GSP offers over 8,000 SKUs .
- 6,500 references available in stock.
- 3,500,000 pcs in stock for fast movers.
- Customized low MOQ.
- One-stop delivery with multiple products offerings.

GSP rubber to metal parts include Engine Mounting, Control Arm Bushing, Flexible Coupling, Steering Rack Bellow Kit, Protection Kit, Center Bearing Kit and Strut Mounting.



Engine Mounting

One part of the engine mounting is connected to the car body or frame and the other side to the engine. The main function of an engine mounting is to reduce vibrations and noises transferred to the cabin.



Engine Mounting

An engine mounting is the part that holds the engine in place to limit movement. In most cars, an engine and transmission are held in place by three or four mountings.



Transmission Mounting

Premium natural and styrene butadiene rubber provides excellent resistance for longer mounting life and long-lasting performance.



Engine Mounting

Superior filling and sealing ensures mounting integration is stable to prevent dirt and debris and delivers good NVH performance.



Engine Mounting

Some applications use active vacuum-controlled engine mounting that vary dampening. Other applications offer electromagnetic mountings to actively reduce engine vibration transferred to the body.



Strut Mounting

Strut mountings connect the loaded strut and the body of a car.





## RUBBER TO METAL PART



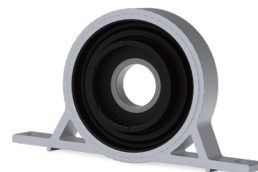
**Bushing**

Bushings have high flexibility and are mainly used for control arms and torsion bars.



**Center Bearing Kit**

GSP is committed to providing high coverage center bearing support for the aftermarket, including repair kit services.



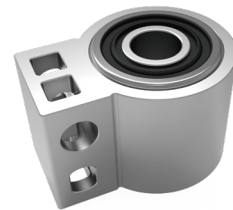
**Center Bearing**

High quality components to optimize seal performance and durability against high-temperatures and weathering.



**Protection Kit**

All GSP protection kits are designed for precise fit, form, and function to match OE specifications.



**Control Arm Bushing**

GSP offers both high quality standard control arm bushings and hydraulic bushings for high NVH performance.



**Flexible Coupling**

Optimized cord inlay and reeling to deliver superior durability and eliminate NVH.



**Stabiliser Bushing**

Stabiliser bushings are used to hold the stabiliser in place, keep the vehicle stable to prevent the vehicle from rolling sideways and improve ride comfort.



**Steering Rack Bellow Kit**

GSP steering rack bellow kits are designed to the Original Equipment specifications including material (thermo-plastic or rubber) and design. Each kit comes with one boot and 2 clamps for an accurate, trouble-free installation.





## STEERING & SUSPENSION PART

**GSP offers steering & suspension parts for popular applications, including American, European, Asian cars, LCV, SUV, hybrid and electric vehicles.**

- GSP offers over 8,000 SKUs.
- 2,700 references available in stock.
- 1,200,000 parts in stock for high demand movers.
- Customized low MOQ.
- One-stop delivery for multiple products offerings.



Ball Joint

High-accuracy mirror finishing equipment ensures the roundness and surface roughness according to technical standards. This treatment helps to decrease friction and prolong service life.



Tie Rod End

GSP applies world-leading inner thread manufacturing technique for a superior quality hole and tie rod end for a higher tensile strength.



Tie Rod Axial Joint

Tie Rod Axial Joint transmits the control force of a steering wheel to the wheel. All products are processed by cold extrusion, hot forging, and CNC lathe to ensure stability after assembling.



Control Arm (Aluminum)

World-leading CNC machining center ensures all products are made to OE specifications for proper fit, form and function.



Rod Assembly

Rubber boot made of premium CR rubber for extreme temperature resistance, anti-corrosion and better sealing performance.



Control Arm

Advanced and automatic welding robot provides precise accuracy of welding angle for premium strength and durability.





## SHOCK ABSORBER

GSP provides shock absorbers for multiple applications, including American, European, Asian vehicles, SUV, HEV and EVs.

- GSP offers over 7,000 SKUs.
- More than 1,700 SKUs of developed loaded struts.
- Customized low MOQ.
- One-stop delivery for multiple product offerings.



**Air Suspension Strut**

Adopting a unique single-cylinder design with active air suspension module to switch to different driving modes at any time and automatically switch dampening according to various road conditions. This ensures safety and stability with no impact on handling and comfort.



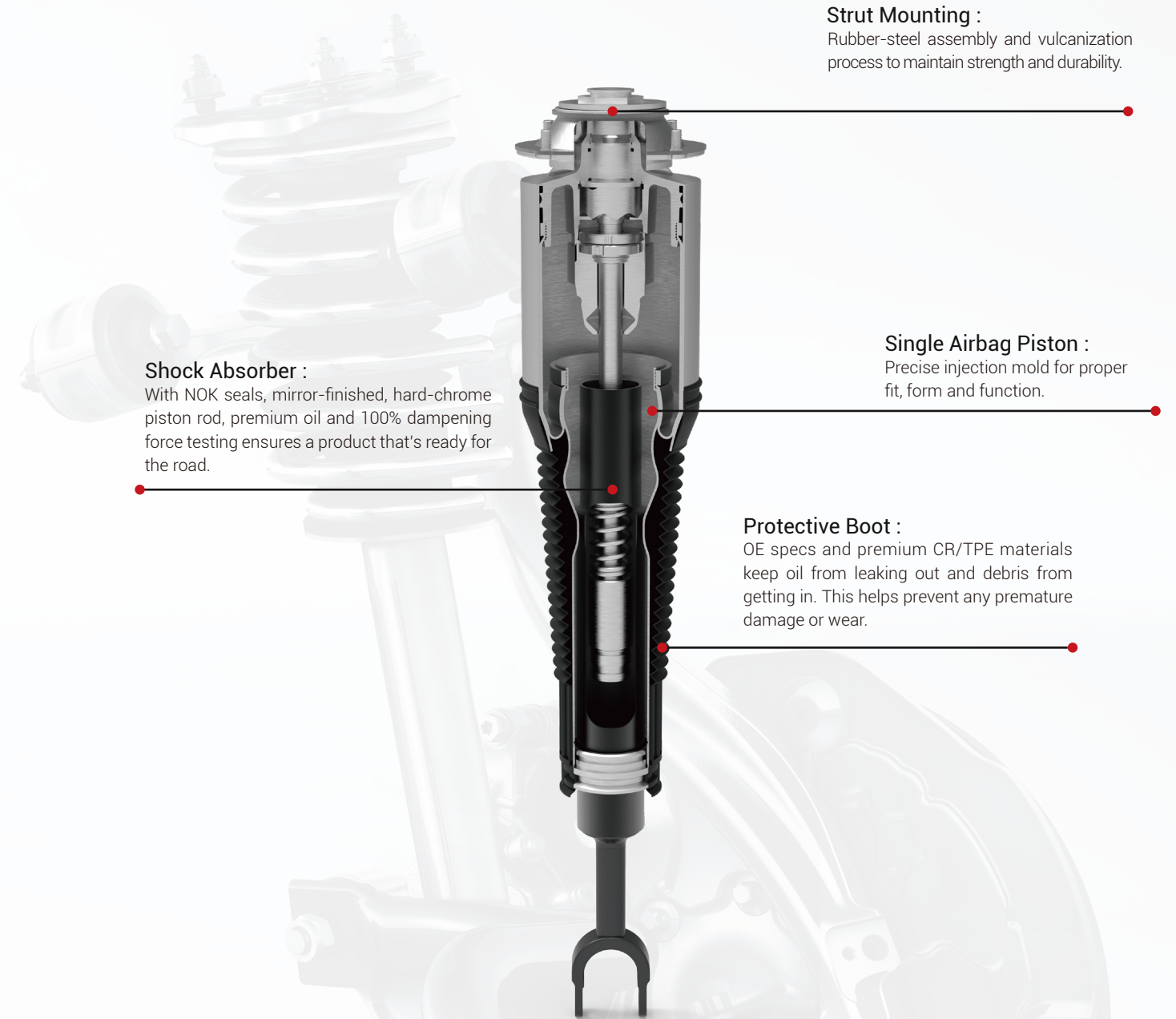
**Loaded Strut**

High-pressure and high-temperature sealing technology for a longer life cycle.



**Shock**

High quality steel for corrosion resistance and an extended service life.



**Strut Mounting :**  
Rubber-steel assembly and vulcanization process to maintain strength and durability.

**Shock Absorber :**  
With NOK seals, mirror-finished, hard-chrome piston rod, premium oil and 100% dampening force testing ensures a product that's ready for the road.

**Single Airbag Piston :**  
Precise injection mold for proper fit, form and function.

**Protective Boot :**  
OE specs and premium CR/TPE materials keep oil from leaking out and debris from getting in. This helps prevent any premature damage or wear.



No afraid of severe cold and high temperatures



## STEERING RACK

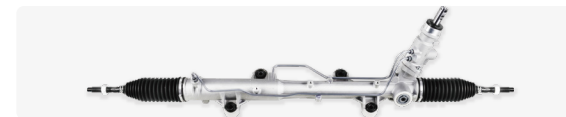


### Function:

It is used to change or maintain the direction of the car, appropriately transform the steering torque and steering angle from the steering wheel, and then output them to the steering rod mechanism to make the car turn.

### Features:

- Flexible MOQ with stable lead time
- Complete coverage of vehicle models, including European, Japanese, Korean and American cars
- Best-selling products are available in stock
- High-quality packaging provides protection to avoid damage during transportation



#### HPS

**Hydraulic Assistance:** Utilizes an engine-driven hydraulic pump to generate hydraulic pressure, which is transmitted through hydraulic lines to the steering mechanism to provide additional steering assistance.

**Ease of Steering:** Significantly reduces the driver's steering effort during low-speed driving or parking.

**Stability Control:**Varies by vehicle speed and steering angle.



#### C-EPS

**Electric Assistance:** Provides steering assistance through a motor mounted on the steering column, enabling precise control.

**Energy-Saving and Efficient:** Only provides assistance when needed(e.g., during low-speed driving or turning), saving energy.

**Compact Design:** The integration of the motor and controller within the steering column results in a more compact design, saving space.



#### Mechanical

**Direct Mechanical Transmission:** Achieves direct transmission of mechanical force through the connection between the steering wheel and the steering gear or steering arm.



The hydraulic steering rack adopts OE quality oil seal to extend the product life and ensure the sealing performance.

Boots are made of TPV/CR material to prevent the product from being corroded by mud and water and leaking.

100% undergone sealing tests and comprehensive performance tests.

All products are new and the product performance is guaranteed.

All products have been inspected at important parts, including clamps, inlet and outlet oil pipe interfaces, locking nuts, etc.

All racks are heat treated and machine straightened, the gear shafts are finely ground, finely rolled and 100% flaw detection tested.

All hydraulic product valve body assemblies are required to be tested by valve centering test machines.

Most products are equipped with tie rod axle joints to increase the convenience of installation for customers.

