

LED OUTDOOR LIGHTING

CATALOG 2023



Ningbo GREHOT Lighting & Electronic Co.,Ltd.
Add:Ningbo Binhai Industrial Zone,Zhejiang Provice
Tel:0086-574-87804733 Fax:0574-83066981
[Http://www.grehot.com](http://www.grehot.com) E-mail:zxrkris@grehot.com

Ningbo GREHOT Lighting & Electronic Co.,Ltd.



25

YEARS OF EXPERIENCE

20

COUNTRIES AND REGIONS

37000

SQUARE METERS

200

MEMBERS

30

TECHNICIANS

Company Introduction

Ningbo Grehot Lighting & Electric Co., Ltd. is located in Binhai industrial zone, Ningbo, Zhejiang, China. The company was established in 1998. It is a professional manufacturer of outdoor lighting, such as street light, flood light, highbay/UFO light.

And Grehot also has other product lines of indoor lighting and control gear, such as LED bulb, down light, spot light, panel light and drivers. The products are all exported to more than 20 countries and regions over the world, such as Europe, Asia Pacific, Middle East, and South America, etc.

The company's total assets are over 5 million US Dollars, with 18000 square meters' construction area of 37000 square meters in the whole.

There are die-casting line, SMT soldering line, spray-painting line, magnetic ballast line and assembling line in our company, by which we can complete processes of the product from product R&D, mould designing, die-casting mechanical Tooling, surface dealing, ballast all through to lamps assembling. There are 200 members in our company. Among them there are 30 technicians including die-casting designers, craft engineers, electric engineers and quality control engineers. All our staff has been well trained. Our company always pay great attention to new products development and quality control.



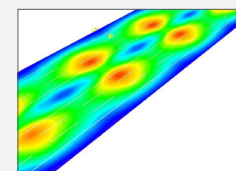
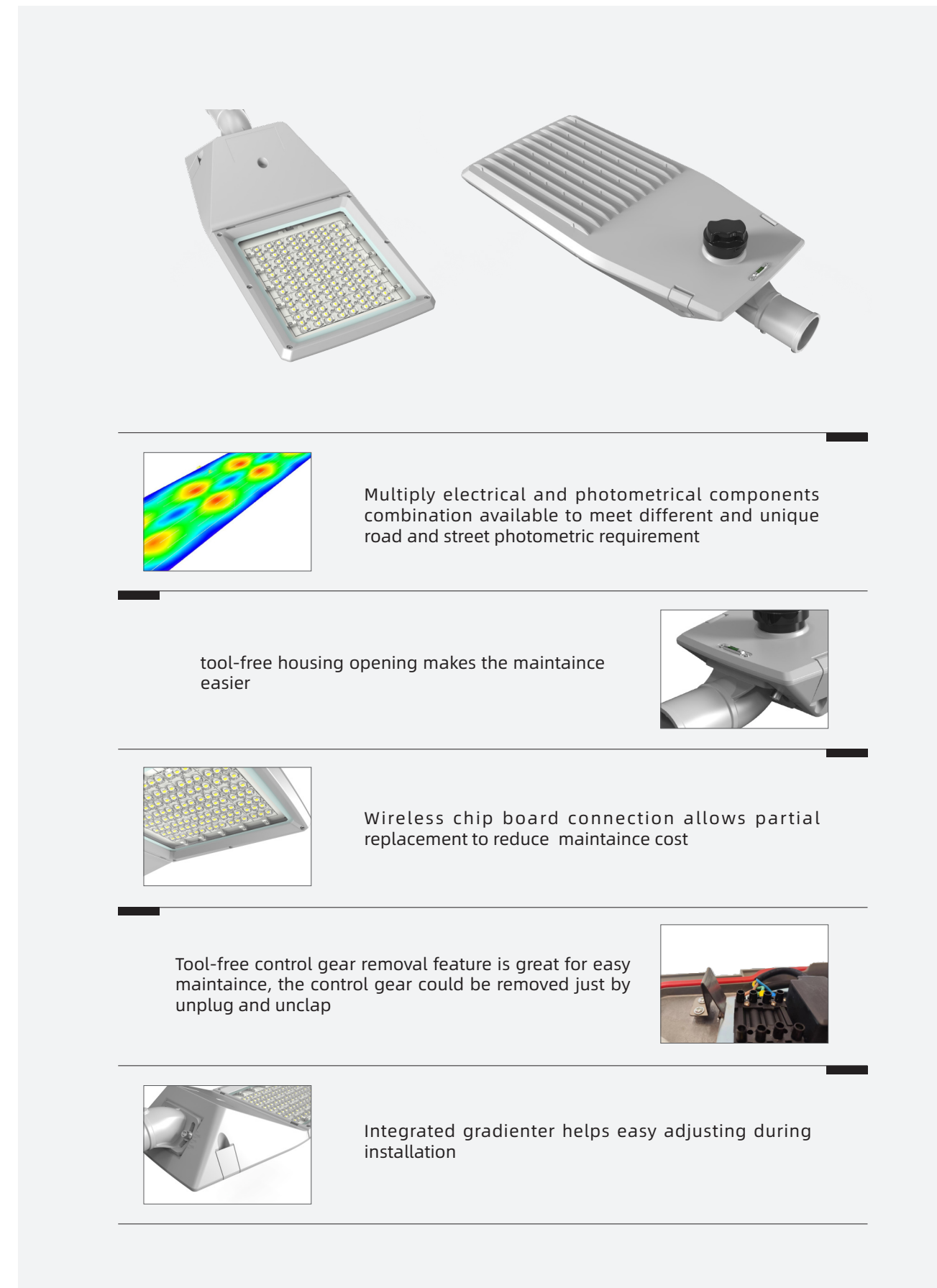
STREET LIGHTS 580 SERIES

Grehot 580 series street lights

Durable design and high quality components provide bright, stable lighting and great lighting effect.

High waterproof and dustproof class, high surge protection and anti-strong wind feature assure our streetlight suitable for outdoor using, such as road, parking, public area. industry, and enabling it to remain stable under harsh weather condition.

Long lifespan, tool-free housing opening, wire-free chip board connection, tool-free control gear removal and automatic mains disconnection when opening the housing make it easy to install and maintain, reduce the maintainance cost.



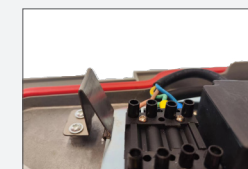
Multiply electrical and photometrical components combination available to meet different and unique road and street photometric requirement

tool-free housing opening makes the maintaince easier

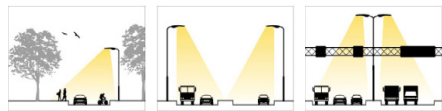


Wireless chip board connection allows partial replacement to reduce maintaince cost

Tool-free control gear removal feature is great for easy maintaince, the control gear could be removed just by unplug and unclap



Integrated gradienter helps easy adjusting during installation



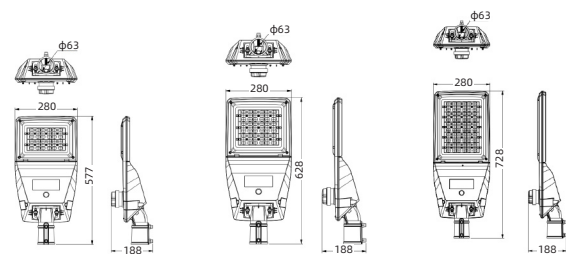
580A



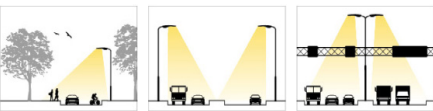
580B



580C



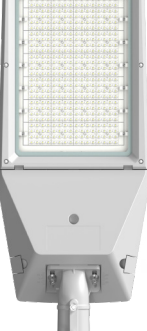
ITEM	580A	580B	580C
Electrical data			
Nominal wattage(optioanl)	50W-65W	75W-100W	120W-150W
Chip(optioanl)	LUMILEDS/CREE...	LUMILEDS/CREE...	LUMILEDS/CREE...
Driver(optioanl)	Philips/Meanwell/Inventronics..	Philips/Meanwell/Inventronics..	Philips/Meanwell/Inventronics..
Nominal voltage(optioanl)	100V-240V/110V-277V	100V-240V/110V-277V	100V-240V/110V-277V
Mains frequency	50...60 Hz	50...60 Hz	50...60 Hz
Photometrical data			
Luminous efficacy	>140LM/W or >160LM/W	>140LM/W or >160LM/W	>140LM/W or >160LM/W
Color temperature(optioanl)	2200K/3000K/4000K/6500K	2200K/3000K/4000K/6500K	2200K/3000K/4000K/6500K
Color rendering index Ra	≥ 70/ ≥ 80	≥ 70/ ≥ 80	≥ 70/ ≥ 80
Material and Applications			
Housing	Die-casting aluminum with anti-corrosion powder coating		
Cover	High transparency tempered Glass		
Optical lens	High transparency polycarbonate UV resistance		
Type of protection/Ingress protection	IP66	IP66	IP66
Protection class IK /Impact protection	IK08	IK08	IK08
Surge protection (SPD)	up to 10 kV (L/N-GND)	up to 10 kV (L/N-GND)	up to 10 kV (L/N-GND)
Smart control(optioanl)	NEMA PCR socket 7Pin	NEMA PCR socket 7Pin	NEMA PCR socket 7Pin
Product Dimension			
Dimensions	577*280*188mm	628*280*188mm	728*280*188mm
Product weight(approx. for reference)	5kgs	5.5kgs	6.5kgs
Spigot for pipe size	Φ38-60mm	Φ38-60mm	Φ38-60mm



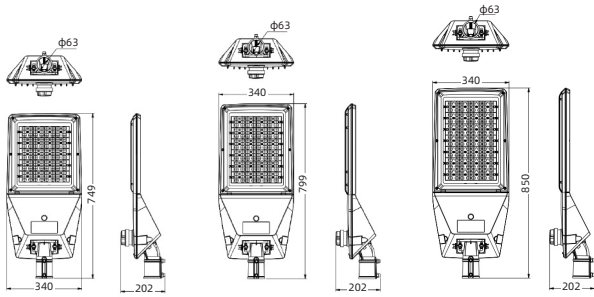
580D



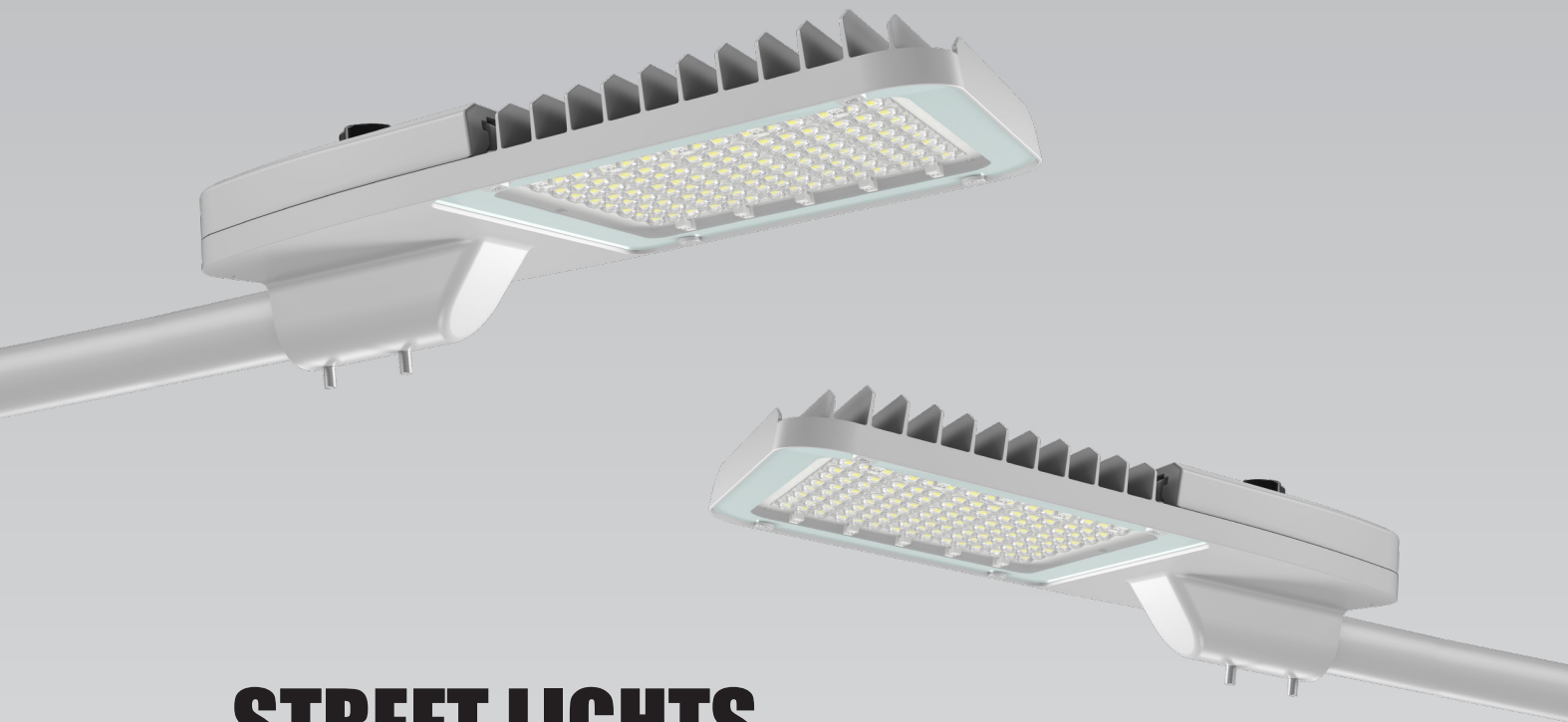
580E



580F



ITEM	580D	580E	580F
Electrical data			
Nominal wattage(optioanl)	180W-200W	240W-250W	280W-320W
Chip(optioanl)	LUMILEDS/CREE...	LUMILEDS/CREE...	LUMILEDS/CREE...
Driver(optioanl)	Philips/Meanwell/Inventronics..	Philips/Meanwell/Inventronics..	Philips/Meanwell/Inventronics..
Nominal voltage(optioanl)	100V-240V/110V-277V	100V-240V/110V-277V	100V-240V/110V-277V
Mains frequency	50...60 Hz	50...60 Hz	50...60 Hz
Photometrical data			
Luminous efficacy	>140LM/W or >160LM/W	>140LM/W or >160LM/W	>140LM/W or >160LM/W
Color temperature(optioanl)	2200K/3000K/4000K/6500K	2200K/3000K/4000K/6500K	2200K/3000K/4000K/6500K
Color rendering index Ra	≥ 70/ ≥ 80	≥ 70/ ≥ 80	≥ 70/ ≥ 80
Material and Applications			
Housing	Die-casting aluminum with anti-corrosion powder coating		
Cover	High transparency tempered Glass		
Optical lens	High transparency polycarbonate UV resistance		
Type of protection/Ingress protection	IP66	IP66	IP66
Protection class IK /Impact protection	IK08	IK08	IK08
Surge protection (SPD)	up to 10 kV (L/N-GND)	up to 10 kV (L/N-GND)	up to 10 kV (L/N-GND)
Smart control(optioanl)	NEMA PCR socket 7Pin	NEMA PCR socket 7Pin	NEMA PCR socket 7Pin
Product Dimension			
Dimensions	749*340*202mm	799*340*202mm	850*340*202mm
Product weight(approx. for reference)	8.2kgs	9.6kgs	11.2kgs
Spigot for pipe size	Φ38-60mm	Φ38-60mm	Φ38-60mm



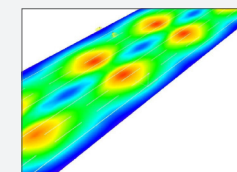
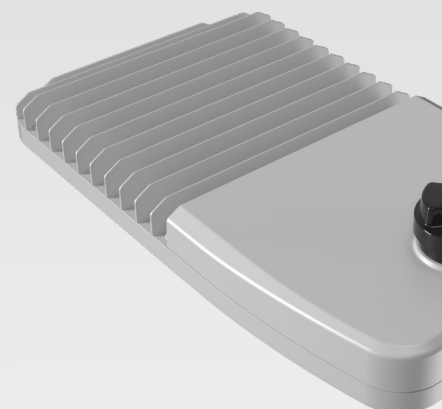
STREET LIGHTS 590 SERIES

Grehot 590 series street lights

Durable design and high quality components provide bright, stable lighting and great lighting effect.

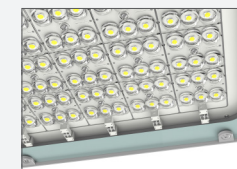
High waterproof and dustproof class, high surge protection and anti-strong wind feature assure our streetlight suitable for outdoor using, such as road, parking, public area, industry, and enabling it to remain stable under harsh weather condition.

Long lifespan, tool-free housing opening, wire-free chip board connection, tool-free control gear removal and automatic mains disconnection when opening the housing make it easy to install and maintain, reduce the maintenance cost.



Multiply electrical and photometrical components combination available to meet different and unique road and street photometric requirement

tool-free housing opening makes the maintenance easier

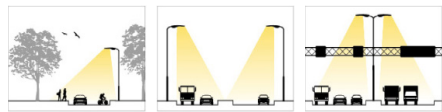


Wireless chip board connection allows partial replacement to reduce maintenance cost

Tool-free control gear removal feature is great for easy maintenance, the control gear could be removed just by unplug and unclap



Integrated gradienter helps easy adjusting during installation



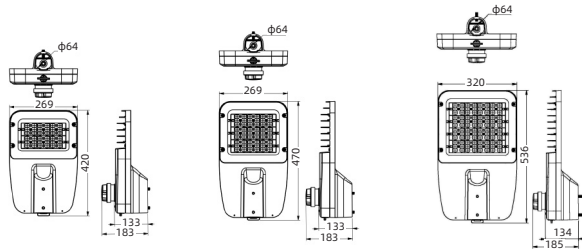
590A



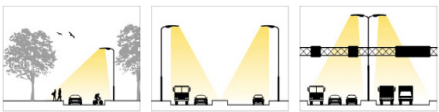
590B



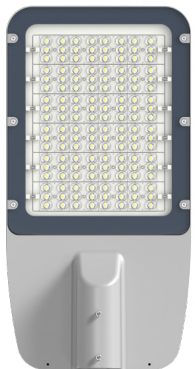
590C



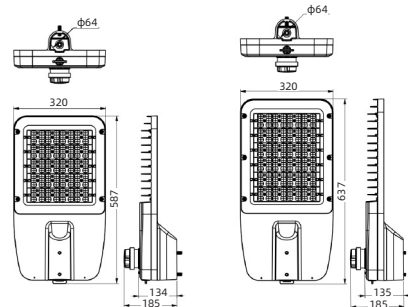
ITEM	590A	590B	590C
Electrical data			
Nominal wattage(optioanl)	50W-65W	75W-100W	120W-150W
Chip(optioanl)	LUMILEDS/CREE...	LUMILEDS/CREE...	LUMILEDS/CREE...
Driver(optioanl)	Philips/Meanwell/Inventronics..	Philips/Meanwell/Inventronics..	Philips/Meanwell/Inventronics..
Nominal voltage(optioanl)	100V-240V/110V-277V	100V-240V/110V-277V	100V-240V/110V-277V
Mains frequency	50...60 Hz	50...60 Hz	50...60 Hz
Photometrical data			
Luminous efficacy	>140LM/W or >160LM/W	>140LM/W or >160LM/W	>140LM/W or >160LM/W
Color temperature(optioanl)	2200K/3000K/4000K/6500K	2200K/3000K/4000K/6500K	2200K/3000K/4000K/6500K
Color rendering index Ra	≥ 70/ ≥ 80	≥ 70/ ≥ 80	≥ 70/ ≥ 80
Material and Applications			
Housing	Die-casting aluminum with anti-corrosion powder coating		
Cover	High transparency tempered Glass		
Optical lens	High transparency polycarbonate UV resistance		
Type of protection/Ingress protection	IP66	IP66	IP66
Protection class IK /Impact protection	IK08	IK08	IK08
Surge protection (SPD)	up to 10 kV (L/N-GND)	up to 10 kV (L/N-GND)	up to 10 kV (L/N-GND)
Smart control(optioanl)	NEMA PCR socket 7Pin	NEMA PCR socket 7Pin	NEMA PCR socket 7Pin
Product Dimension			
Dimensions	420*269*183mm	470*269*183mm	536*320*185mm
Product weight(approx. for reference)	4.6kgs	5.0kgs	6.0kgs
Spigot for pipe size	Φ38-60mm	Φ38-60mm	Φ38-60mm



590D



590E



ITEM	590D	590E
Electrical data		
Nominal wattage(optioanl)	180W-200W	240W-250W
Chip(optioanl)	LUMILEDS/CREE...	LUMILEDS/CREE...
Driver(optioanl)	Philips/Meanwell/Inventronics..	Philips/Meanwell/Inventronics..
Nominal voltage(optioanl)	100V-240V/110V-277V	100V-240V/110V-277V
Mains frequency	50...60 Hz	50...60 Hz
Photometrical data		
Luminous efficacy	>140LM/W or >160LM/W	>140LM/W or >160LM/W
Color temperature(optioanl)	2200K/3000K/4000K/6500K	2200K/3000K/4000K/6500K
Color rendering index Ra	≥ 70/ ≥ 80	≥ 70/ ≥ 80
Material and Applications		
Housing	Die-casting aluminum with anti-corrosion powder coating	
Cover	High transparency tempered Glass	
Optical lens	High transparency polycarbonate UV resistance	
Type of protection/Ingress protection	IP66	IP66
Protection class IK /Impact protection	IK08	IK08
Surge protection (SPD)	up to 10 kV (L/N-GND)	up to 10 kV (L/N-GND)
Smart control(optioanl)	NEMA PCR socket 7Pin	NEMA PCR socket 7Pin
Product Dimension		
Dimensions	587*320*185mm	637*320*185mm
Product weight(approx. for reference)	7.6kgs	8.8kgs
Spigot for pipe size	Φ38-60mm	Φ38-60mm

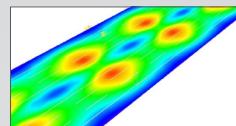
STREET LIGHTS 538 SERIES

Grehot 538 series street lights

Durable design and high quality components provide bright, stable lighting and great lighting effect.

High waterproof and dustproof class, high surge protection and anti-strong wind feature assure our streetlight suitable for outdoor using, such as road, parking, public area. industry, and enabling it to remain stable under harsh weather condition.

Long lifespan, tool-free housing opening, wire-free chip board connection, tool-free control gear removal and automatic mains disconnection when opening the housing make it easy to install and maintain, reduce the maintainance cost.



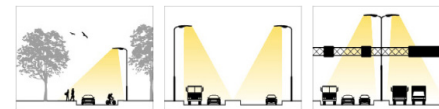
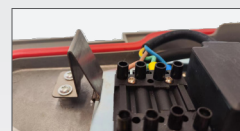
Multiply electrical and photometrical components combination available to meet different and unique road and street photometric requirement

Wireless chip board connection allows partial replacement to reduce maintaince cost

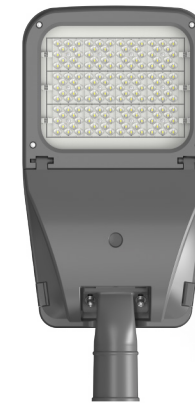


tool-free housing opening makes the maintaince easier

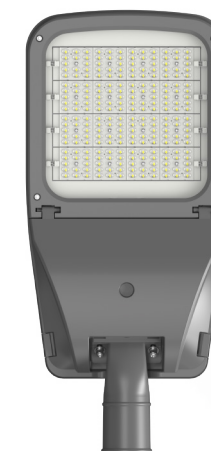
Tool-free control gear removal feature is great for easy maintaince, the control gear could be removed just by unplug and unclap



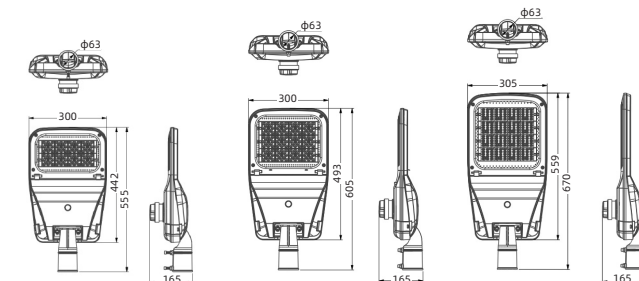
538S



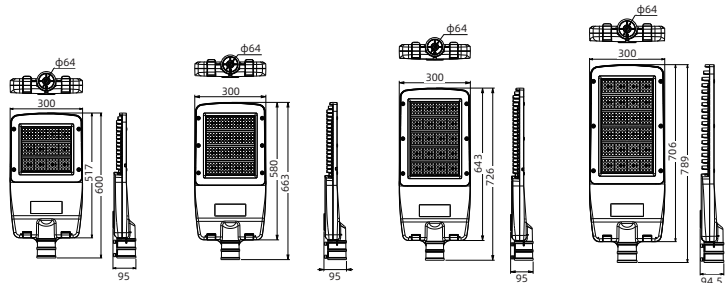
538M



538L

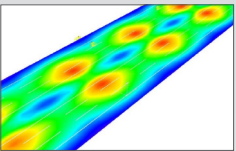
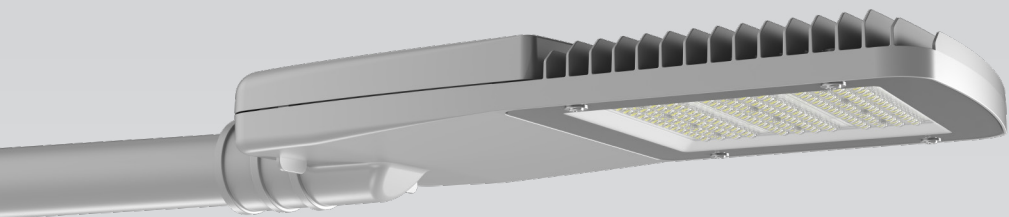


ITEM	538S	538M	538L
Electrical data			
Nominal wattage(optionl)	35W-80W	80W-100W	120W-150W
Chip(optionl)	LUMILEDS/CREE...	LUMILEDS/CREE...	LUMILEDS/CREE...
Driver(optionl)	Philips/Meanwell/Inventronics...	Philips/Meanwell/Inventronics...	Philips/Meanwell/Inventronics...
Nominal voltage(optionl)	100V-240V/110V-277V	100V-240V/110V-277V	100V-240V/110V-277V
Mains frequency	50...60 Hz	50...60 Hz	50...60 Hz
Photometrical data			
Luminous efficacy	>140LM/W or >160LM/W	>140LM/W or >160LM/W	>140LM/W or >160LM/W
Color temperature(optionl)	3000K/4000K/6500K	3000K/4000K/6500K	3000K/4000K/6500K
Color rendering index Ra	≥ 70/ ≥ 80	≥ 70/ ≥ 80	≥ 70/ ≥ 80
Material and Applications			
Housing	Die-casting aluminum with anti-corrosion powder coating		
Cover	High transparency tempered Glass		
Optical lens	High transparency polycarbonate UV resistance		
Type of protection/Ingress protection	IP66	IP66	IP66
Protection class IK /Impact protection	IK08	IK08	IK08
Surge protection (SPD)	up to 10 kV (L/N-GND)	up to 10 kV (L/N-GND)	up to 10 kV (L/N-GND)
Smart control(optionl)	NEMA PCR socket 7Pin	NEMA PCR socket 7Pin	NEMA PCR socket 7Pin
Product Dimension			
Dimensions	555*300*165mm	605*300*165mm	670*305*165mm
Product weight(approx. for reference)	5.6kg	6.3kg	6.5kg
Spigot for pipe size	Φ38-60mm	Φ38-60mm	Φ38-60mm



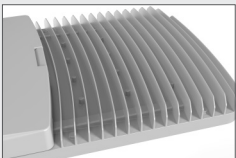
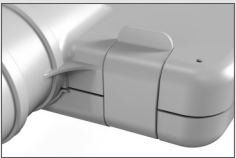
STREET LIGHTS 310 SERIES

310 Series Street light, A new born ECO product series reformed from GREHOT SUPER QUALITY LEVEL street light products. This new series provides more options to save your budget with competitive pricing and reliable quality as GREHOT always be.

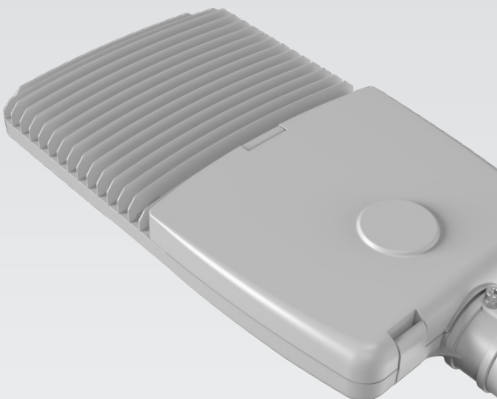


Multiply electrical and photometrical components combination available to meet different and unique road and street photometric requirement

tool-free housing opening makes the maintaince easier



Plenty of exhaust fins help to reduce the heat to ensure the luminaire working properly



ITEM	310A	310B	310C	310D
Electrical data				
Nominal wattage	150W	200W	250W	300W
Chip(optioanl)	LUMILEDS/CREE...	LUMILEDS/CREE...	LUMILEDS/CREE...	LUMILEDS/CREE...
Driver(optioanl)	Grehot 50W*3	Grehot 50W*4	Grehot 50W*5	Grehot 50W*6
Nominal voltage (optioanl)	220-240V	220-240V	220-240V	220-240V
Mains frequency	50...60 Hz	50...60 Hz	50...60 Hz	50...60 Hz
Photometrical data				
Luminous efficacy	120LM/W or 140LM/W	120LM/W or 140LM/W	120LM/W or 140LM/W	120LM/W or 140LM/W
Color temperature (optioanl)	2200K/3000K/4000K/6500K	2200K/3000K/4000K/6500K	2200K/3000K/4000K/6500K	2200K/3000K/4000K/6500K
Color rendering index Ra	≥ 70/ ≥ 80	≥ 70/ ≥ 80	≥ 70/ ≥ 80	≥ 70/ ≥ 80
Material and Applications				
Housing	Die-casting aluminum with anti-corrosion powder coating			
Cover	High transparency tempered Glass			
Optical lens	High transparency polycarbonate UV resistance			
Type of protection/ Ingress protection	IP66	IP66	IP66	IP66
Protection class IK / Impact protection	IK08	IK08	IK08	IK08
Product Dimension				
Dimensions	600*300*95mm	663*300*95mm	726*300*95mm	789*300*95mm
Product weight (approx. for reference)	5.5kgs	6.3kgs	7.1kgs	7.9kgs
Spigot for pipe size	Φ38-60mm	Φ38-60mm	Φ38-60mm	Φ38-60mm

FLOOD LIGHT FLG SERIES

The FLG Series LED Floodlight adopts super bright LED as its luminous body, powered by High PF Driver, which is safety, energy saving and long life. Aluminum die-casting body with baking varnish disposalmakes it stylish and fashionable with everlasting color. Clear PC optical lenses with tempered glass ensure higher lumen output. The slim design perfectly gives consideration of industrial, modern and artistic. Excellent thermal management can effectively guarantee the LED's long-term stability. Instantstart, no flickering, no humming, no hazardous material (mercury, lead etc). IP65 guarantees the Floodlight to work outdoor in any kind of weather with no problem.



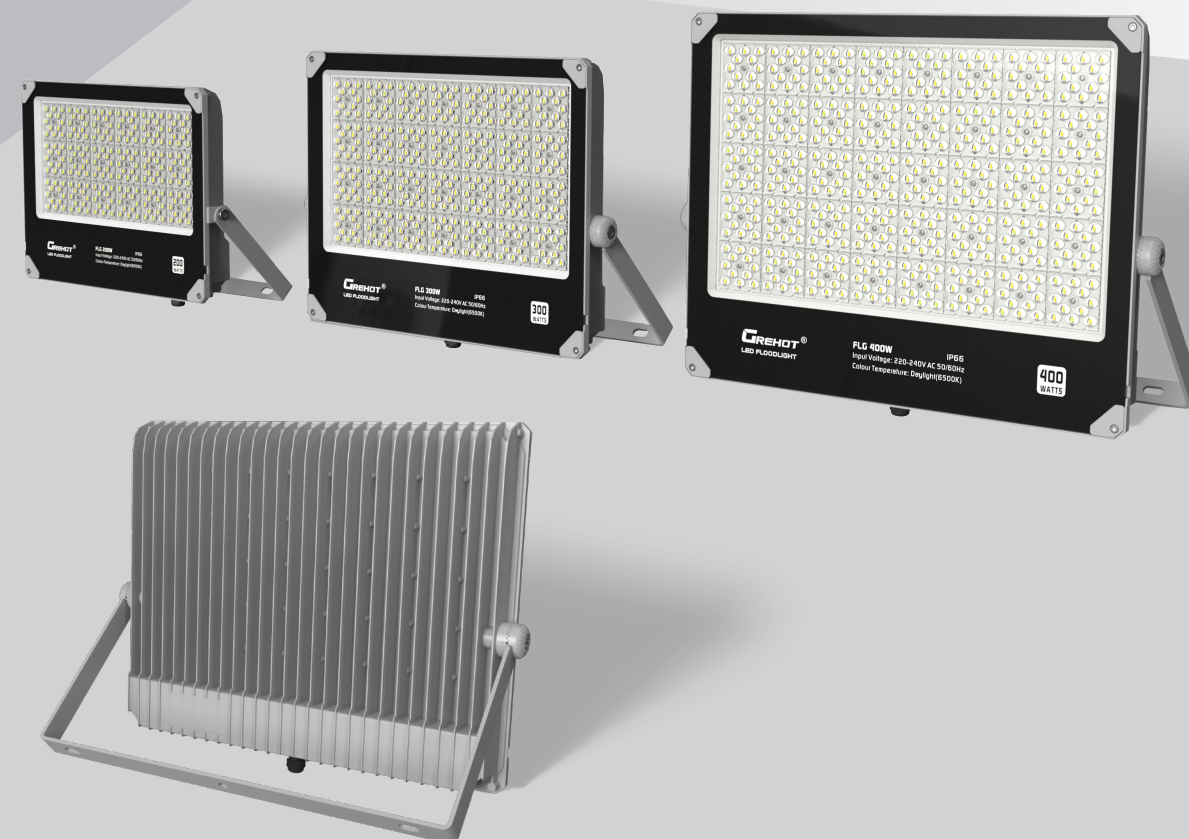
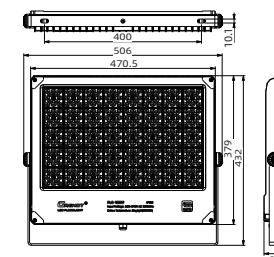
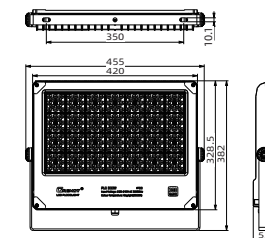
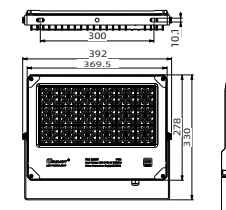
FLG200W



FLG300W



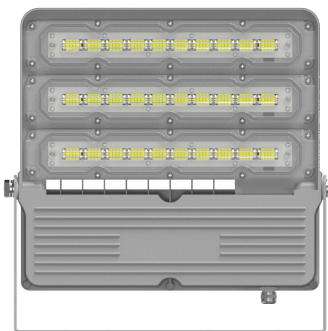
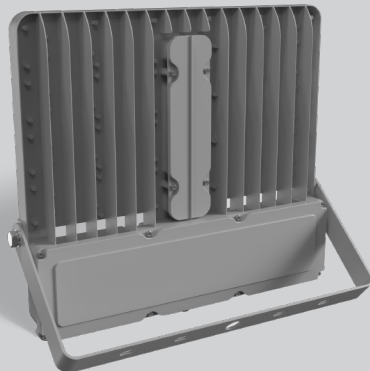
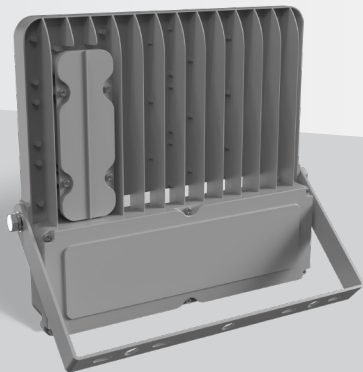
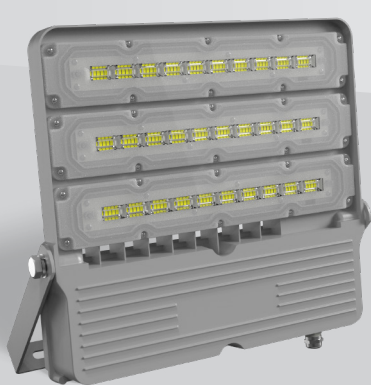
FLG400W



ITEM	FLG200W	FLG300W	FLG400W
Electrical data			
Nominal wattage(optionl)	200W	300W	400W
Chip(optionl)	LUMILEDS/CREE...	LUMILEDS/CREE...	LUMILEDS/CREE...
Driver	Grehot 200W	Grehot 150W*2	Grehot 200W*2
Nominal voltage(optionl)	220V-240V	220V-240V	220V-240V
Mains frequency	50...60 Hz	50...60 Hz	50...60 Hz
Photometrical data			
Luminous efficacy	>130 LM/W or >150 LM/W	>130 LM/W or >150 LM/W	>130 LM/W or >150 LM/W
Color temperature(optionl)	3000K/4000K/6500K	3000K/4000K/6500K	3000K/4000K/6500K
Color rendering index Ra	≥ 70/ ≥ 80	≥ 70/ ≥ 80	≥ 70/ ≥ 80
Beam angle symmetric(optionl)	30° /60° /90° ...	30° /60° /90° ...	30° /60° /90° ...
Beam angle asymmetric(optionl)	156° *68° /150° *75° ...	156° *68° /150° *75° ...	156° *68° /150° *75° ...
Material and Applications			
Housing	Die-casting aluminum with anti-corrosion powder coating		
Cover	High transparency tempered Glass		
Optical lens	High transparency polycarbonate UV resistance		
Type of protection/Ingress protection	IP66	IP66	IP66
Protection class IK /Impact protection	IK08	IK08	IK08
Product Dimension			
Dimensions body	369.5*278*53mm	420*328.5*53mm	470.5*379*53mm
Dimensions with fixture	392*330*53mm	455*382*53mm	506*432*53mm
Product weight(approx. for reference)	4kg	5.8kg	7.5kg

FLOOD LIGHT FLP SERIES

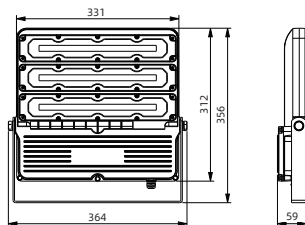
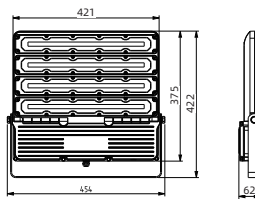
The FLP Series LED Floodlight adopts super bright LED as its luminous body, powered by isolated constant current driver, which is safety, energy saving and long life. Aluminum die-casting body with baking varnish disposalmakes it stylish and fashionable with everlasting color. Matted PC optical lenses ensure higher lumen output. The super slim design perfectly gives consideration of industrial, modern and artistic. Excellent thermal management can effectively guarantee the LED's long-term stability. Instantstart, no flickering, no humming, no hazardous material (mercury, lead etc). IP65 guarantees the Floodlight to work outdoor in any kind of weather with no problem.



FLP-A-100W



FLP-B-200W



ITEM	FLP-A-100W	FLP-B-200W
Electrical data		
Nominal wattage(optionl)	100W	200W
Chip(optionl)	LUMILEDS/CREE...	LUMILEDS/CREE...
Driver	Greohot 100W	Greohot 200W
Nominal voltage(optionl)	100V-240V/110V-277V	100V-240V/110V-277V
Mains frequency	50/60 Hz	50/60 Hz
Photometrical data		
Luminous efficacy	>120 LM/W or >140 LM/W	>120 LM/W or >140 LM/W
Color temperature(optionl)	3000K/4000K/6500K	3000K/4000K/6500K
Color rendering index Ra	≥ 70/ ≥ 80	≥ 70/ ≥ 80
Beam angle symmetric(optional)	70°	70°
Material and Applications		
Housing	Die-casting aluminum with anti-corrosion powder coating	
Optical lens	High transparency polycarbonate UV resistance	
Type of protection/Ingress protection	IP66	IP66
Protection class IK /Impact protection	IK08	IK08
Product Dimension		
Dimensions body	331*312*59mm	421*375*62mm
Dimensions with fixture	364*356*59mm	454*422*62mm
Product weight(approx. for reference)	2.9kg	4.4kg

FLOOD LIGHT FLF-P SERIES



The FLF Series LED Floodlight adopts super bright LED as its luminous body, powered by Grehot driver, which is safety, energy saving, and long life. Aluminium die-casting body with baking varnish disposal makes it stylish and fashionable with everlasting color. Super slim body with glass cover perfectly gives consideration of industrial, modern and artistic.

Excellent thermal management can effectively guarantee the LED's long-term stability. Instant start, no flickering, no humming, no hazardous material (mercury, lead etc.) IP66 guarantees the Floodlight to work outdoor in any kind of weather with no problem.



FLF-P-100W-C



FLF-P-150W-C



FLF-P-50W-C



FLF-P-100W-F



FLF-P-50W-F



FLF-P-200W-C

Curved Housing Cover



FLF-P-30W-C



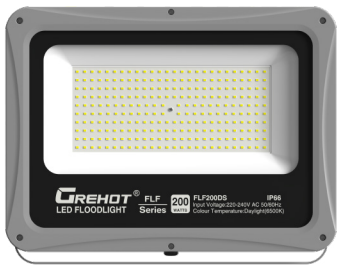
FLF-P-50W-C



FLF-P-100W-C



FLF-P-150W-C



FLF-P-200W-C

Full Plump Housing Cover



FLF-P-30W-F



FLF-P-50W-F



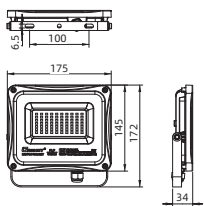
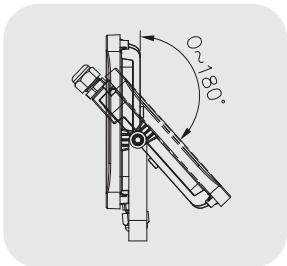
FLF-P-100W-F



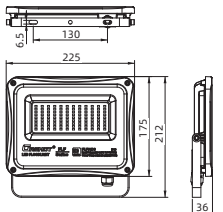
FLF-P-150W-F



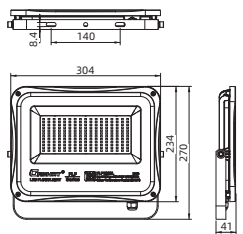
FLF-P-200W-F



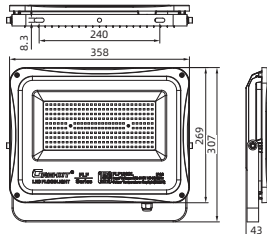
FLF-P-30W



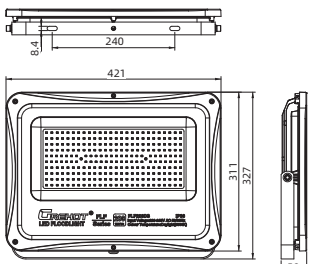
FLF-P-50W



FLF-P-100W



FLF-P-150W



FLF-P-200W

ITEM	FLF-P-30W	FLF-P-50W	FLF-P-100W	FLF-P-150W	FLF-P-200W
Electrical data					
Nominal wattage(optionl)	30W	50W	100W	150W	200W
Chip(optionl)	LUMILEDS/CREE...	LUMILEDS/CREE...	LUMILEDS/CREE...	LUMILEDS/CREE...	LUMILEDS/CREE...
Driver	Grehot 30W	Grehot 50W	Grehot 100W	Grehot 150W	Grehot 200W
Nominal voltage(optionl)	220V-240V	220V-240V	220V-240V	220V-240V	220V-240V
Mains frequency	50...60 Hz	50...60 Hz	50...60 Hz	50...60 Hz	50...60 Hz
Photometrical data					
Luminous efficacy	>120 LM/W or higher	>120 LM/W or higher	>120 LM/W or higher	>120 LM/W or higher	>120 LM/W or higher
Color temperature (optionl)	3000K/4000K/6500K	3000K/4000K/6500K	3000K/4000K/6500K	3000K/4000K/6500K	3000K/4000K/6500K
Color rendering index Ra	≥ 70/ ≥ 80	≥ 70/ ≥ 80	≥ 70/ ≥ 80	≥ 70/ ≥ 80	≥ 70/ ≥ 80
Beam angle	110°	110°	110°	110°	110°
Material and Applications					
Housing	Die-casting aluminum with anti-corrosion powder coating				
Cover	High transparency tempered Glass				
Reflector	High reflectance PC reflector				
Optional housing cover	Curved housing cover and full plump housing cover for choice				
Ambient temperature range	-40-50°C	-40-50°C	-40-50°C	-40-50°C	-40-50°C
Type of protection/ Ingress protection	IP66	IP66	IP66	IP66	IP66
Protection class IK / Impact protection	IK08	IK08	IK08	IK08	IK08
Product Dimension					
Dimensions body	175*145*34mm	225*175*36mm	304*234*41mm	358*269*43mm	421*311*50mm
Dimensions with fixture	175*172*34mm	225*212*36mm	304*270*41mm	358*307*43mm	421*327*50mm
Product weight (approx. for reference)	0.64kg	1kg	1.74kg	2.83kg	3.57kg

FLOOD LIGHT FLF-A SERIES



The FLF Series LED Floodlight adopts super bright LED as its luminous body, powered by Grehot driver, which is safety, energy saving, and long life. Aluminium die-casting body with baking varnish disposal makes it stylish and fashionable with everlasting color. Super slim body with glass cover perfectly gives consideration of industrial, modern and artistic. Excellent thermal management can effectively guarantee the LED's long-term stability. Instant start, no flickering, no humming, no hazardous material (mercury, lead etc.) IP66 guarantees the Floodlight to work outdoor in any kind of weather with no problem.



FLF-A-50W-F



FLF-A-100W-C



FLF-A-30W-C



FLF-A-150W-F



FLF-A-200W-F

Curved Housing Cover



FLF-A-30W-C



FLF-A-50W-C



FLF-A-100W-C



FLF-A-150W-C



FLF-A-200W-C

Full Plump Housing Cover



FLF-A-30W-F



FLF-A-50W-F



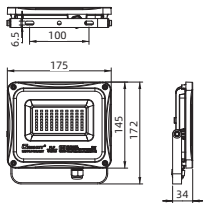
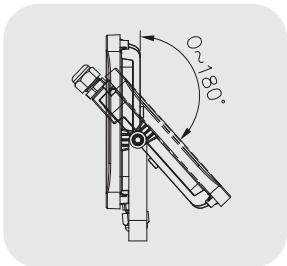
FLF-A-100W-F



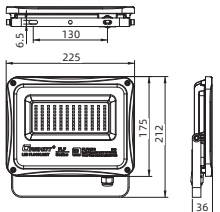
FLF-A-150W-F



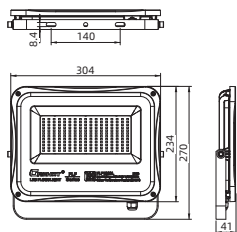
FLF-A-200W-F



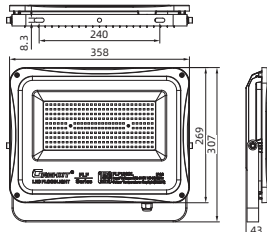
FLF-A-30W



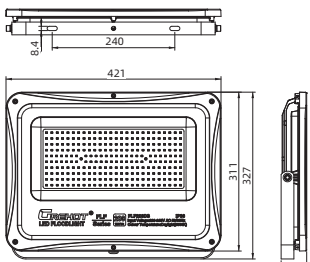
FLF-A-50W



FLF-A-100W



FLF-A-150W

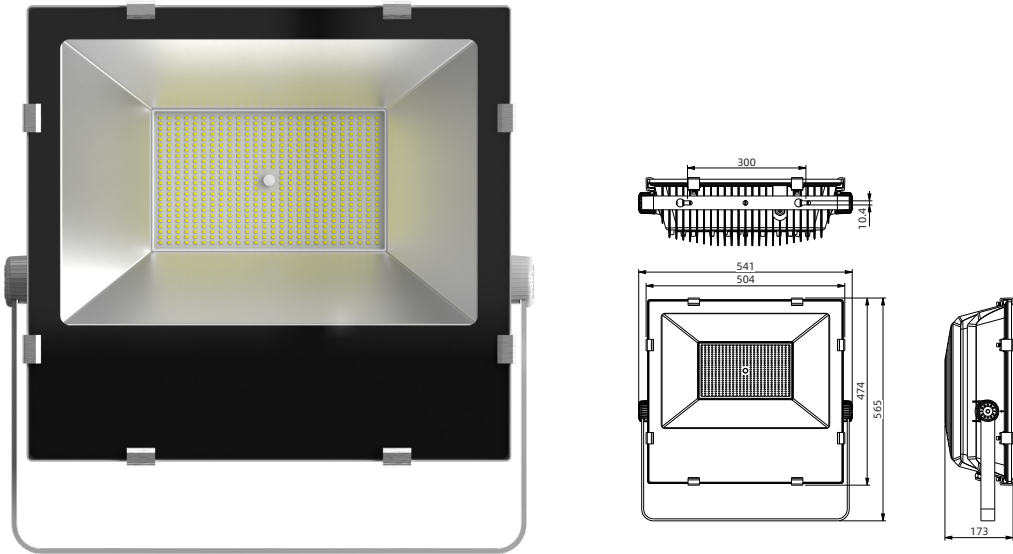
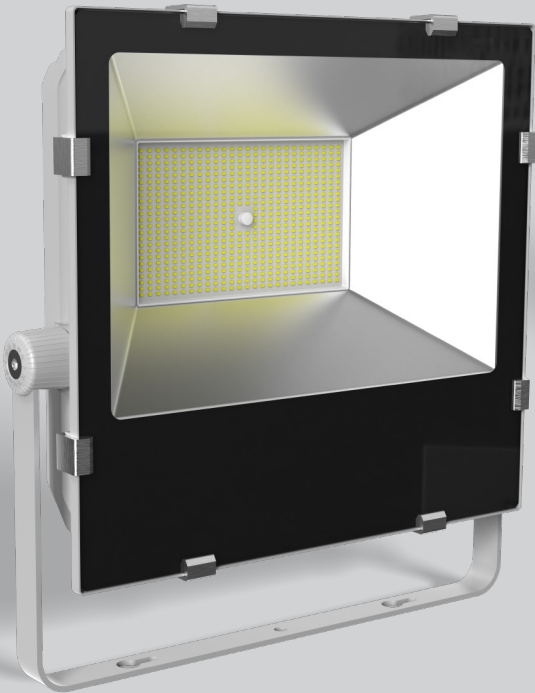


FLF-A-200W

ITEM	FLF-A-30W	FLF-A-50W	FLF-A-100W	FLF-A-150W	FLF-A-200W
Electrical data					
Nominal wattage(optionl)	30W	50W	100W	150W	200W
Chip(optionl)	LUMILEDS/CREE...	LUMILEDS/CREE...	LUMILEDS/CREE...	LUMILEDS/CREE...	LUMILEDS/CREE...
Driver	Grehot 30W	Grehot 50W	Grehot 100W	Grehot 150W	Grehot 200W
Nominal voltage(optionl)	220V-240V	220V-240V	220V-240V	220V-240V	220V-240V
Mains frequency	50...60 Hz	50...60 Hz	50...60 Hz	50...60 Hz	50...60 Hz
Photometrical data					
Luminous efficacy	>120 LM/W or higher	>120 LM/W or higher	>120 LM/W or higher	>120 LM/W or higher	>120 LM/W or higher
Color temperature (optionl)	3000K/4000K/6500K	3000K/4000K/6500K	3000K/4000K/6500K	3000K/4000K/6500K	3000K/4000K/6500K
Color rendering index Ra	≥ 70/ ≥ 80	≥ 70/ ≥ 80	≥ 70/ ≥ 80	≥ 70/ ≥ 80	≥ 70/ ≥ 80
Beam angle	110°	110°	110°	110°	110°
Material and Applications					
Housing	Die-casting aluminum with anti-corrosion powder coating				
Cover	High transparency tempered Glass				
Reflector	High reflectance aluminium reflector				
Optional housing cover	Curved housing cover and full plump housing cover for choice				
Type of protection/ Ingress protection	IP66	IP66	IP66	IP66	IP66
Protection class IK / Impact protection	IK08	IK08	IK08	IK08	IK08
Product Dimension					
Dimensions body	175*145*34mm	225*175*36mm	304*234*41mm	358*269*43mm	421*311*50mm
Dimensions with fixture	175*172*34mm	225*212*36mm	304*270*41mm	358*307*43mm	421*327*50mm
Product weight (approx. for reference)	0.64kg	1kg	1.74kg	2.83kg	3.57kg

FLOOD LIGHT FLS SERIES

The FLS Series LED Floodlight adopts super bright LED as its luminous body, could be powered by varies options of LED drivers. Aluminum die-casting body with baking varnish disposal makes it stylish and fashionable with everlasting color. Tempered glass cover with Aluminum reflector ensure higher lumen output. Excellent thermal management can effectively guarantee the LED's long-term stability. Instantstart, no flickering, no humming, no hazardous material (mercury, lead etc). IP66 guarantees the Floodlight to work outdoor in any kind of weather with no problem.

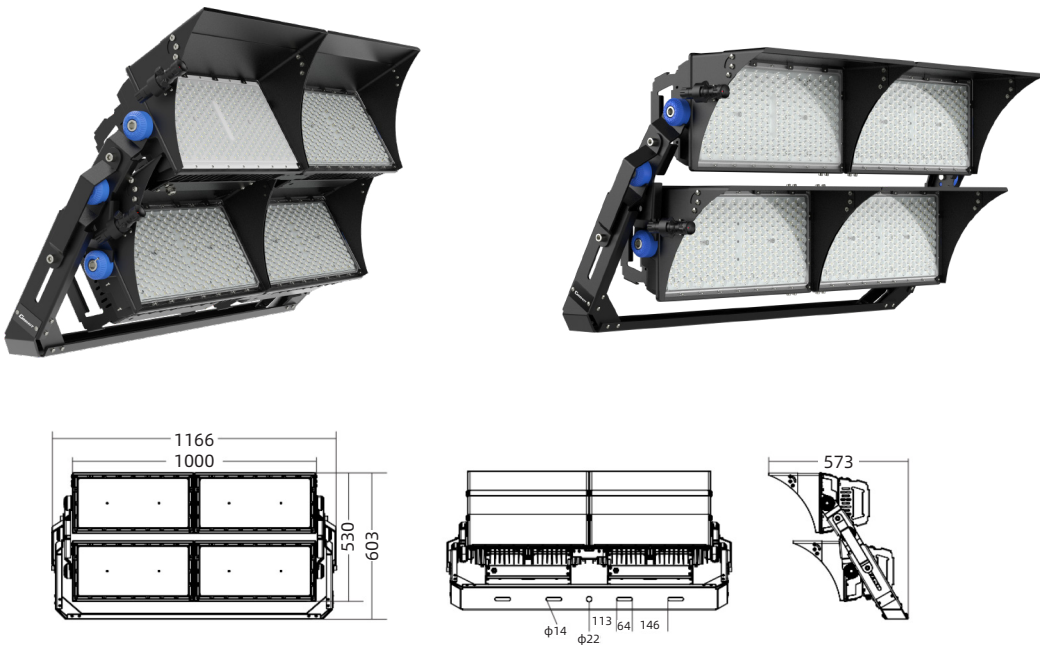


ITEM	FLS400W
Electrical data	
Nominal wattage(optionl)	400W
Chip(optionl)	LUMILEDS/CREE...
Driver	Philips/Meanwell/Inventronics...
Nominal voltage(optionl)	100V-240V/110V-277V
Mains frequency	50/60 Hz
Photometrical data	
Luminous efficacy	>120 LM/W or >140 LM/W
Color temperature(optionl)	3000K/4000K/6500K
Color rendering index Ra	≥ 70/ ≥ 80
Beam angle symmetric	90°
Material and Applications	
Housing	Die-casting aluminum with anti-corrosion powder coating
Cover	High transparency tempered Glass
Type of protection/Ingress protection	IP66
Protection class IK /Impact protection	IK08
Product Dimension	
Dimensions body	504*474*173mm
Dimensions with fixture	541*565*173mm
Product weight(approx. for reference)	12kg



FLOOD LIGHT HPM SERIES

GREHOT Floodlight HPM series with its high thermal conductivity aluminium housing, anti UV High transparency PC cover, high rating ingress protection and strong thick fixture is suitable for large open air area lighting system such as stadium, park, square and road. The Modular and separated individual driver design allow the HPM floodlights to meet different needs. Max power could reach 2000Watts with high luminous efficacy.

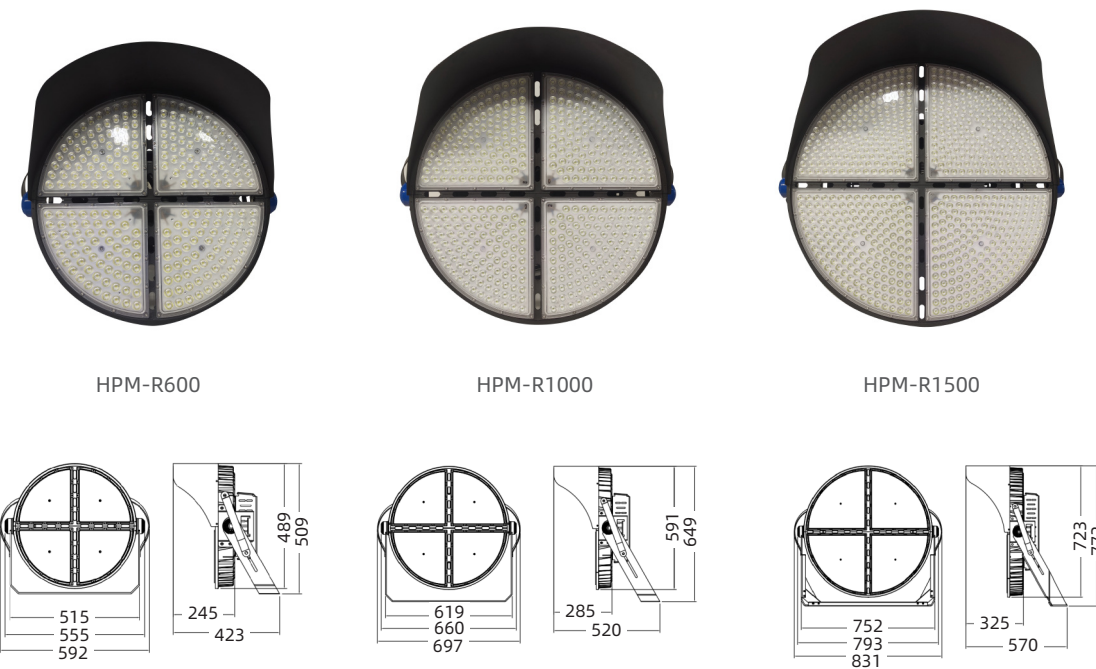


ITEM	HPM
Electrical data	
Nominal wattage	500W*4=2000W
Chip(Optional)	LUMILEDS/CREE..
Driver	PHILIPS/MEANWELL/INVENTRONICS...
Driver mounting type	Individual driver mounted on each modules' back separately
Nominal voltage	220V-240V
Mains frequency	50/60 Hz
Photometrical data	
Luminous efficacy	>130 LM/W or >150 LM/W
Color temperature(optioanl)	3000K/4000K/6500K
Color rendering index Ra	≥ 70/ ≥ 80
Beam angle symmetric(optional)	30° /60° /90° ..
Beam angle asymmetric(optional)	156° *68° /150° *75° ...
Material and Applications	
Housing	Die-casting aluminum with anti-corrosion powder coating
Cover	Anti UV High transparency PC cover
Fixture	Cold rolled steel
Ambient temperature range	-40 to +85°C
Type of protection/Ingress protection	IP66
Protection class IK /Impact protection	IK08
Surge protection	up to 10 kV (L/N-GND) in series
Anti vibration	2g
Lifespan L70/B10 at 25 ° C	50,000 h
Product Dimension	
Dimensions body	1000*530*573mm(reference)
Dimensions with fixture	1166*603*573mm(reference)
Product weight(approx. for reference)	65kg



FLOOD LIGHT HPM-R SERIES

GREHOT Floodlight HPM-R series with its high thermal conductivity aluminium housing, high transparency polycarbonate UV resistance optical lens, high rating ingress protection and strong thick fixture is suitable for large open air area lighting system such as stadium, park, square and road. The Modular and separated individual driver design allow the HPM-R floodlights to meet different needs. Max power could reach 1500Watts with high luminous efficacy.



ITEM	HPM-R600	HPM-R1000	HPM-R1500
Electrical data			
Nominal wattage	400W-600W	800W-1000W	1200W-1500W
Chip(Optional)	LUMILEDS/CREE..	LUMILEDS/CREE..	LUMILEDS/CREE..
Driver	PHILIPS/MEANWELL/ INVENTRONICS...	PHILIPS/MEANWELL/ INVENTRONICS...	PHILIPS/MEANWELL/ INVENTRONICS...
Driver mounting type	Individual driver mounted on modules' back		
Nominal voltage(Optional)	100-277Vac/277-480Vac	100-277Vac/277-480Vac	100-277Vac/277-480Vac
Mains frequency	50/60 Hz	50/60 Hz	50/60 Hz
Power factor λ(PF)	> 0.95	> 0.95	> 0.95
Total harmonic distortion(THD)	< 10 % @ 220-240V	< 10 % @ 220-240V	< 10 % @ 220-240V
Protection class	Class I	Class I	Class I
Photometrical data			
Luminous efficacy	>150 LM/W	>150 LM/W	>150 LM/W
Color temperature(optioanl)	3000K/4000K/6500K	3000K/4000K/6500K	3000K/4000K/6500K
Color rendering index Ra	≥ 70	≥ 70	≥ 70
Beam angle symmetric(optinal)	30° /60° /90° ..	30° /60° /90° ..	30° /60° /90° ..
Material and Applications			
Housing	Die-casting aluminum with anti-corrosion powder coating		
Optical lens	High transparency polycarbonate UV resistance		
Fixture	Cold rolled steel		
Ambient temperature range	-40 to +55°C	-40 to +55°C	-40 to +55°C
Type of protection/Ingress protection	IP66	IP66	IP66
Protection class IK /Impact protection	IK08	IK08	IK08
Surge protection	up to 10 kV (L/N-GND) in series	up to 10 kV (L/N-GND) in series	up to 10 kV (L/N-GND) in series
Air load aerodynamic	wind speed > 60 m/s	wind speed > 60 m/s	wind speed > 60 m/s
Anti vibration	2g	2g	2g
Lifespan L70/B10 at 25 ° C	50,000 h	50,000 h	50,000 h
Product Dimension			
Dimensions body	592*509*423mm	697*649*520mm	831*772*570mm
Product weight(approx. for reference)	20kgs	27kgs	40kgs

FLOOD LIGHT TOP LIGHT SERIES

Grehot Top Light make the roads, streets and your neighbourhood more beautiful with its fresh and vivid colors. Our top light provides various color options for different needs, you can make your choices to decorate the darkness with Red, Green, Blue, Yellow, Orange, White, Pink, Purple and any color you name it. If you think the monochrome is too monotonous, we also have RGB top light for your option, it can change the color automaticly and bring you a polychrome night.



ITEM		TOP LIGHT
Electrical data		
Nominal wattage(optional)		12W-20W
Chip(optional)		LUMILEDS/CREE...
Driver		Grehot
Nominal voltage(optioanl)		220-240V
Mains frequency		50/60 Hz
Power factor λ(PF)		> 0.90
Protection class		Class I
Photometrical data		
Colors available		Red/ Green/Blue/Yellow/Orange/White/Pink/Purple/RGB
Color rendering index Ra		N/A
Beam angle symmetric		360°
Flicker		None
Material and Applications		
Bottom base		Die-casting aluminum with anti-corrosion powder coating
Cover		Anti -UV plastic cover
Ambient temperature range		-40-50°C
Type of protection/Ingress protection		IP66
Lifespan L70/B10 at 25 ° C		50,000 h
Product Dimension		
Dimensions body		71.5*678mm
Product weight(approx. for reference)		496g