

# Project & Specification

At Kosnic, the design, development and manufacture of low energy LED solutions is our business. So is helping our customers think about their lighting and how it can help combat ever increasing energy prices, reduce energy consumption and lower carbon emissions. Lighting will typically account for around 25% to 40% of a buildings energy usage. Kosnic LED lighting can dramatically reduce this, using between 50% and 90% less energy than traditional lamp types such as halogen, fluorescent or filament.



Cadbury World

## What We Do

Services available to you include:

- Client liaison and site surveys
- Cost of ownership calculations
- Lighting design schemes
- Technical support
- Sales tools and product selection advice

Working closely with our Wholesale and Distribution partners, our aim is to help you build a compelling business case to persuade customers of the benefits of switching to a Kosnic LED solution.



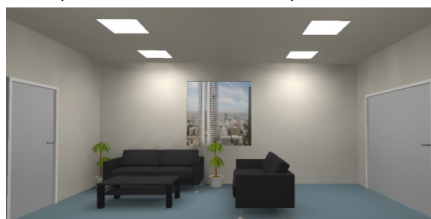
Brunts Academy

## Cost Of Ownership Calculations

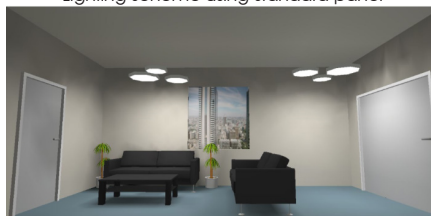
After conducting a site survey, we will prepare a detailed cost analysis to present to both you and the client. Our cost of ownership calculator highlights the key comparisons between existing lamps and the proposed Kosnic LED replacement, showing the overall annual spend reduction, kWh reduction, CO2 emission reduction and payback period. Whatever the size of the project, helping secure the clients approval is our aim.

## Lighting Schemes

At Kosnic, our technical expertise and experience within the lighting industry allows us to develop lighting schemes that are as positive for people as they are sustainable for the environment and for business. The Project Team can create a lighting scheme for your clients using industry recognised RELUX software. Once the design criteria such as room dimensions, ceiling height and working area have been established, we can present a professional 3D design visual back to the client. This can even include elements such as worksurfaces, tables, windows and chairs. Of course, if you already have an in-house lighting design team, we are happy to work alongside you and provide the necessary specification and photometric data required.



Lighting scheme using standard panel

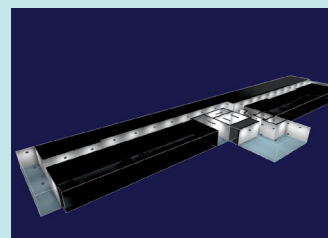
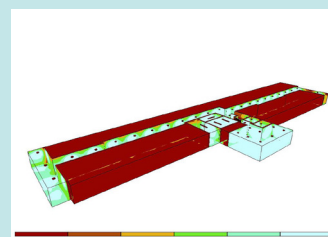


Lighting scheme using different sized circular panels

## Client Liaison and Site Surveys

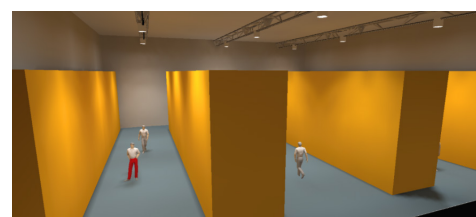
To enable us to build a picture of the project, provide accurate replacement models and cost saving calculations, we require information such as the type of lamps currently being used, quantities involved, working areas and usage. Depending on the complexity and scale of the project, we will visit the premises to conduct a site survey.

## Relux Designs



## Relux

In 2015, Kosnic Lighting entered into a new partnership with Relux Informatik AG Switzerland, the international lighting planning software expert. Kosnic's lighting solutions are now featured on the Relux platform to assist the industry in its lighting planning.



Warehouse design made on Relux, using remote control sensor and emergency option