



SAQR STREET LIGHTING

Light up the way

High efficacy • Innovative • Durable



BEYOND the name ...

SAQR means Falcon in English. The falcon is Qatar's national bird, which is highly appreciated and loved in Arabic countries. The Falcon is related to heritage and culture, and it represents courage and dignity. In Qatar, there are 6 different kinds of falcons; the Amur falcon, Sooty falcon, Lanner falcon, Saqr falcon, Peregrine falcon, and the Barbary falcon. The falcon is a very important bird in Qatar as it had been used as a hunting tool because of its sharp eyesight, and is associated with being noble and wealthy. It is a popular bird but has to be cared for appropriately and undergo intensive training. Falconry is an integral part of the heritage and culture of Qatar with falconers forming a very special bond with their falcons.

AREAS OF APPLICATION

URBAN & RESIDENTIAL STREETS
RAILWAYS & METRO STATIONS
BIKES & PEDESTRIAN AREAS
ROADS & MOTOR WAYS
PARKING AREAS
HIGHWAYS
BRIDGES



Products Benefits & Features

- Superior efficacy, up to 155 lm/W.
- 70% energy saving, short ROI period.
- Up to 100,000 hrs @ L70, low maintenance cost.
- World-class, approbated quality components.
- Tool-less opening of driver box, ease of maintenance.
- High-grade aluminum housing with stainless steel screws marine grade to ensure high quality and reliable operation.
- Support horizontal and vertical mounted, suitable for different light poles.
- Excellent outlook, robust and durable design.
- Lifetime of more than 100,000 hours.
- Easy and fast installation.
- Wide temperature operating range.
- IK10, IP66.
- Smart city simplified integration options.
- Wide choice of optics.
- 95% of the material used are recyclable materials.
- 5 years warranty.

Dimensions

SAQR MINI

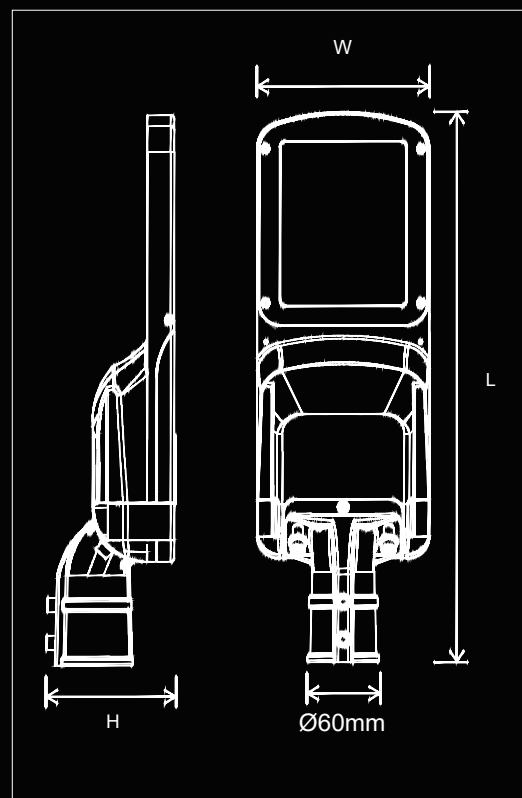
Wattage: 20,40,60W
Dimensions: L610xW190xH143mm
Weight: 4.7kg

SAQR MIDI

Wattage: 80,100,120W
Dimensions: L660xW240xH143mm
Weight: 5.8kg

SAQR MAXI

Wattage: 150,180,200,240W
Dimensions: L762xW290xH143mm
Weight: 8.1kg





Product Datasheet

Product Range

	SAQR MINI 1.1	SAQR MINI 1.2	SAQR MINI 1.3
Nominal Wattage (W)	20	40	60
Efficiency (lm/W)	155lm/W	150lm/W	150lm/W
Lumen Output (lm)	3100	6000	9000

	SAQR MIDI 1.1	SAQR MIDI 1.2	SAQR MIDI 1.3
Nominal Wattage (W)	80	100	120
Efficiency (lm/W)	150lm/W	155 lm/W	155 lm/W
Lumen Output (lm)	12000	15500	18600

	SAQR MAXI 1.1	SAQR MAXI 1.2	SAQR MAXI 1.3	SAQR MAXI 1.4
Nominal Wattage (W)	150	180	200	240
Efficiency (lm/W)	150lm/W	150lm/W	150lm/W	150lm/W
Lumen Output (lm)	22500	27000	30000	36000

*Values are subject to ±5% tolerance.

Electrical Data

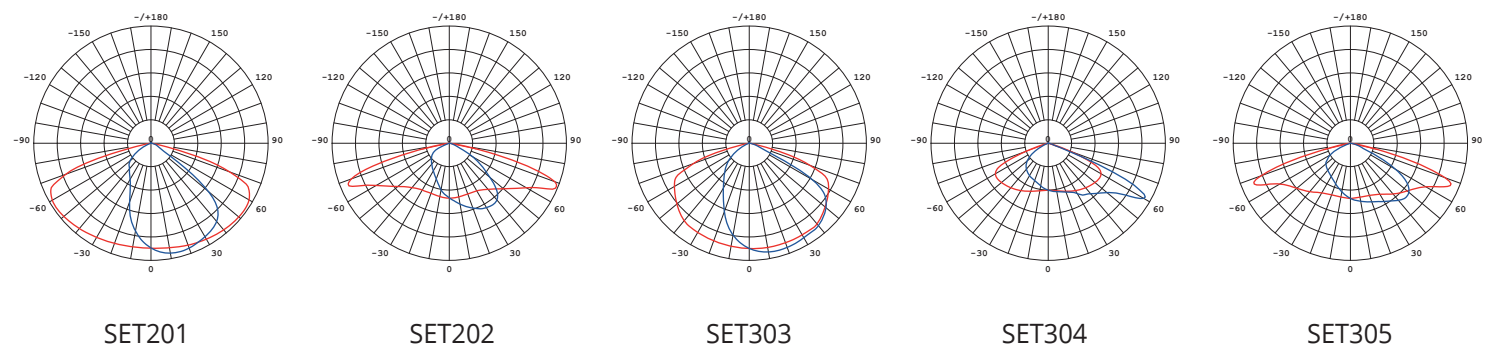
Nominal Wattage (W)	220-240VAC 50/60Hz
LED	Lumileds
Driver	Inventronics Osram (Default) / Other brands (available on request)
Power Factor (PF)	>0.95
THD	<15
Typical Leakage current	<5 mA
Surge protection (including LED indicator)	10KV (Default) / 20KV (available on request)
Optics	SET201,SET202,SET303,SET304,SET305
Standard Deviation of Color Matching	3 SDCM / 5 SDCM
CRI	Ra> 70 (Default) / Ra>80 (available on request)
CCT (K)	3000K,4000K,5000K,5700K

General Data

Body Material	High Pressure Die-cast Aluminum powder coated
Housing Color	Gray (Default) / Other colors (available on request)
Cover Material	Clear tempered glass
Lens Material	UV-resistant Polycarbonate
Working Ambient Temperature	-40°C ~ +50°C, 10% ~ 95% RH
Lifespan L70 at 25°	>100,000 h
Mounting Type	Side entry or Vertical pole mounted 60mm / Pole reducer 76/60 (available on request)
Dimmable	1-10V Dimming (Default) / Timer dimming (available on request)
Protection Class	Class I (Default) / Class II (available on request)
Sealing	Gaskets
Screws	Stainless steel 316 marine grade
IP rating	IP66
IK rating	IK10
Warranty	5 years
Compliance testing	CB, LM79, LM80, LM82, LM84, TM-21, TM-28, THD, ISTMT, Corrosion test, 3-axis vibration test, Photobiological safety test, IP66, IK10
Standards	RoHS, IEC60598, IEC, EER

Product Datasheet

Distributions



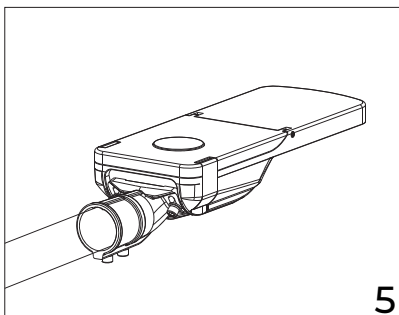
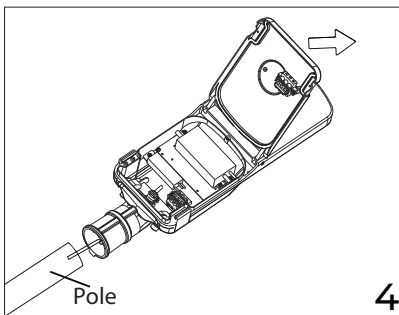
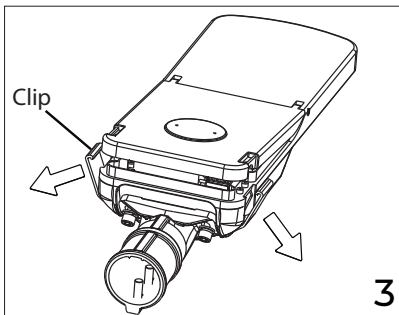
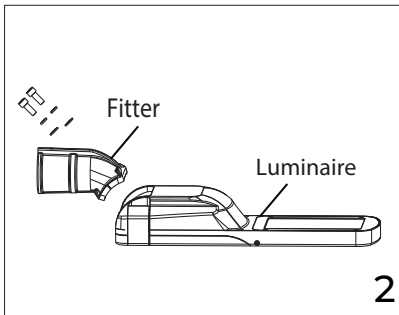
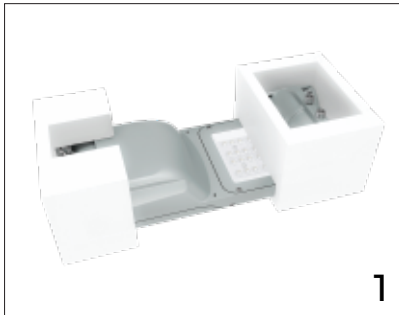
Optional accessories

Photocell	Shorting Cap	NEMA Socket (3/5/7 pin)	Motion Sensor	Smart Controller	Knife Switch	Pole Reducer
						
Ph	ShC	NS	MS	SC	KS	PR

ORDERING CODE

SERIES NAME - PRODUCT RANGE - COLOR - SURGE PRT. - CRI - CCT - PRT. CLASS - OPTICS - ACCESSORIES									
SAQR	MINI I.1	G Gray B Black	I 10KV 2 20KV	7 Ra>70 8 Ra>80	30 3000K 40 4000K 50 5000K 57 5700K	I Class I II Class II	I SET201	Ph	PHOTOCELL
	MINI I.2						2 SET202	ShC	SHORTING CAP
	MINI I.3						3 SET303	NS	NEMA SOCKET
	MIDI I.1						4 SET304	MS	MOTION SENSOR
	MIDI I.2						5 SET305	SC	SMART CONTROLLER
	MIDI I.3							KS	KNIFE SWITCH
	MIDI I.4							PR	POLE REDUCER
	MAXI I.1								
	MAXI I.2								
	MAXI I.3								
	MAXI I.4								

Installation Manual



Installation & connection instructions

- STEP 1: Open the package and check the product.
In case of any damage, contact us.
- STEP 2: Fasten the fitter onto street light with screws provided and adjust the fitter in the desired tilt angle.
- STEP 3: Open the clips and Insert the pole and external power cord into the luminaire. Tighten the M16 connector.
- STEP 4: Connect the cable to Knife switch or terminal block, make sure to connect the cable correctly.
Brown-Live, Blue- Neutral, Yellow/Green-Ground.
Fix the luminaire and pole by allen wrench.
- STEP 5: Close the cover and clips.
Switch the voltage on and check to see that the street light works properly.

Recommended torque: $17\text{Nm} \pm 1\text{Nm}$

Caution

- Installation and maintenance must be performed by professionals only.
- Please ensure the pole is strong enough and the screws are tightened.
- The ground wire must be securely connected.
- Please make sure the LED fixture is working with correct input voltage.
- Cut off the power before maintenance.
- Do not use chemicals or corrosive cleaner to clean the fixture.
- If the external flexible cable or cord of this luminaire is damaged, it shall be exclusively replaced by a qualified person in order to avoid a hazard.
- The light source contained in this luminaire shall only be replaced by the manufacturer or his service agent or a similar qualified person.
- Torque setting in newton meters to be applied to any bolts which fixes the luminaire to its support.

Adjustable tilt angle: $\pm 0-5-10-15^\circ$

