

SASAKI®
P R O F E S S I O N A L

SASAKI®
P R O F E S S I O N A L

G U I D E B O O K

SASAKI®
P R O F E S S I O N A L

(주) JD INTERNATIONAL 02-2135-4488
1701-1705-ho, 68 Digital-ro 9-gil, Geumcheon-gu, Seoul, Republic of Korea



SASAKI[®]
PROFESSIONAL

Learn about SASAKI Professional
in SNS with useful information.

“ Please sign up and join us ”

사사키 프로페셔널의 SNS와 함께 하시면
빠르게 유익한 정보를 확인하실 수 있습니다.

“ 지금 바로 가입하세요 ”



Hair stylists need creative sensibilities and delicate motifs.

The best products will make the style they've been drawing in their head a reality. It provides creative results and convenient usability.

Sasaki Professional is working towards a common goal. Experts in each field—consists of hair stylists, salon educators, online marketers, distribution managers, and laboratories.

By identifying customers' needs accurately and offering creative inspiration through the best solution, It has established Sasaki Loyal as the No. 1 brand in Korea.

At its heart is a sophisticated manufacturing process that combines science and art. Safe and effective ingredients, advanced manufacturing technology, and artistic color design harmonize. It gives your hair stylist confidence and realizes healthy beauty.

A strong partner in the salon leading artistic sense and creative innovation, SASAKI PROFESSIONAL is with you on your journey beyond your limits.

HAIR COLOR LOOK

Tint Image Reference Hair
틴트 이미지 기준모



	NB Natural Brown	CB Coconut Brown	BA Blue Ash	GR Green	YL Yellow	OR Orange	RD Red	RV Red Violet	VL Violet	PM Plum Maple	SA Shadow Ash	CA Clear Ash	BC Beige Cotton
15	15-00		15-BA	15-GR	15-YL	15-OR	15-RD	15-RV	15-VL				
13	13-NB	13-CB	13-BA	13-GR	13-YL	13-OR	13-RD	13-RV	13-VL	13-PM	13-SA	13-CA	13-BC
11	11-NB	11-CB	11-BA	11-GR	11-YL	11-OR	11-RD	11-RV	11-VL	11-PM	11-SA	11-CA	11-BC
9	9-NB	9-CB	9-BA	9-GR	9-YL	9-OR	9-RD	9-RV	9-VL	9-PM	9-SA	9-CA	9-BC
8	8-NB	8-CB											
7	7-NB	7-CB	7-BA	7-GR	7-YL	7-OR	7-RD	7-RV	7-VL	7-PM	7-SA	7-CA	7-BC
6	6-NB	6-CB	6-BA	6-GR	6-YL	6-OR	6-RD	6-RV	6-VL	6-PM	6-SA	6-CA	6-BC
5	5-NB	5-CB											
4	4-NB												
3	3-NB												
2	BLUE BLACK												

COLOR GUIDE

13-BA
Lightness Color (Blue Ash)

Lightness	Mixing Ratio	
	1st	2nd
Level 1-11	1	1
Level 13	1	2
Level 15	1	3



1st Agent 120g
LOOK 80 Colors / CONTROLLER 9 Colors



2nd Agent 1500g
3%, 6%, 9%, 12%

	CLEAR	BLUE	GREEN	YELLOW	ORANGE	RED	VIOLET	PINK	ASH
CONTROLLER 컨트롤러									

THE COLORS IN THIS CHART ARE SAMPLE IMAGES FOR REFERENCE. ACTUAL HAIR COLOR MAY VARY SLIGHTLY DEPENDING ON PRINTING CONDITIONS.

HAIR COLOR BASE

Tint Image Reference Hair
틴트 이미지 기준모



Speed Line	Base High Cover Line			Texture Control Line			Image Control Line					
QB Quick Brown	BH-NB Natural Brown	BH-CB coconut Brown	BH-BB Beige Brown	NB Natural Brown	CB coconut Brown	BB Beige Brown	AB Ash Brown	Mt.B Matt Brown	YB Red Violet	Or.B Orange Brown	RB Red Brown	PB Purple Brown
11	BH11-NB	BH11-CB	BH11-BB	B11-NB	B11-CB	B11-BB	B11-AB	B11-Mt.B	B11-YB	B11-Or.B	B11-RB	B11-PB
9	BH9-NB	BH9-CB	BH9-BB	B9-NB	B9-CB	B9-BB	B9-AB	B9-Mt.B	B9-YB	B9-Or.B	B9-RB	B9-PB
8	BH8-NB	BH8-CB	BH8-BB	B8-NB	B8-CB	B8-BB	B8-AB	B8-Mt.B	B8-YB	B8-Or.B	B8-RB	B8-PB
7	BH7-NB	BH7-CB	BH7-BB	B7-NB	B7-CB	B7-BB	B7-AB	B7-Mt.B	B7-YB	B7-Or.B	B7-RB	B7-PB
6	BH6-NB	BH6-CB	BH6-BB	B6-NB	B6-CB	B6-BB	B6-AB	B6-Mt.B	B6-YB	B6-Or.B	B6-RB	B6-PB
5	BH5-NB	BH5-CB	BH5-BB	B5-NB	B5-CB	B5-BB	B5-AB	B5-Mt.B	B5-YB	B5-Or.B	B5-RB	B5-PB
4	BH4-NB	BH4-CB	BH4-BB	B4-NB	B4-CB	B4-BB	B4-AB	B4-Mt.B	B4-YB	B4-Or.B	B4-RB	B4-PB
3	BH3-NB	BH3-CB	BH3-BB	B3-NB	B3-CB	B3-BB	B3-AB	B3-Mt.B	B3-YB	B3-Or.B	B3-RB	B3-PB
2	BH2-NB	BH2-CB	BH2-BB	B2-NB	B2-CB	B2-BB	B2-AB	B2-Mt.B	B2-YB	B2-Or.B	B2-RB	B2-PB

Lightness	Mixing Ratio	
	1제	2제
	Levels 7-8	1
Levels 9-11	1	2

*Base High Cover Line: Mixing Ratio

Speed Line (QB Quick Brown) is recommended for use on standard gray hair (30-50%) : Leave-on time 7 minutes

COLOR GUIDE

B9-NB
BASE BRIGHTNESS COLOR(NATURAL BROWN)
BH9-NB
BASE HIGH COVER BRIGHTNESS COLOR(NATURAL BROWN)



1st Agent 120g
BASE HIGH COVER 12 Colors / BASE 54 Colors



2nd Agent 1500g
3%, 6%, 9%, 12%

**First in Korea!
Patents Secured in 5 Countries**

Our product's quality is proven through reliable international patents.

국내최초
CHINA
JAPAN
FRANCE
AMERICA
KOREA

세계 5개국 동시 특허 완료
SASAKI

Patent Title - Hair dye composition and production method that reduce hair damage and scalp irritation caused by ammonia formulas, while significantly minimizing ammonia odor

* THE COLORS IN THIS CHART ARE SAMPLE IMAGES FOR REFERENCE. ACTUAL HAIR COLOR MAY VARY SLIGHTLY DEPENDING ON PRINTING CONDITIONS.
* COMPARED TO THE TEXTURE CONTROL LINE, THE BASE HIGH COVER LINE ENHANCES BRIGHTNESS, CONTRAST, AND GRAY COVERAGE.
PLEASE NOTE THAT SCALP SENSITIVITY MAY VARY DEPENDING ON INDIVIDUAL CONSTITUTION OR DAILY CONDITION.

Authentic

SASAKI HIGH PERFORMANCE COLOR
ABSOLUTE VALUES

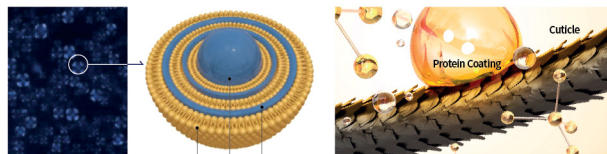
Goes beyond East Asian tones to show colors that suit "Korean" skin tone best.

[SASAKI AUTHENTIC : Oxidative Hair Dye with Medium-to-Low Brightness and High Chroma]



2 Patented Technologies in SASAKI AUTHENTIC Hair Dye

Reduces ammonia odor and lessens scalp irritation! Helps restore cuticle damage while improving shine, softness, color visibility, and color hold



LSE (Lamellar Structure Emulsion) Method + **QBT (Quinone Bridge Technology) Applied**
 Maltacross structure seen in a multi-lamellar liquid crystal system. Single Encapsulation (Dye, Ammonia, Water-soluble Conditioning Agent). Quinone works as a bridge between proteins and keratin in the hair cuticle, helping protein stick to keratin and supporting damaged hair repair. Pocket system holds ammonia inside lamellar layers to reduce odor & lower scalp irritation. QBT (Quinone cross-linking reaction) System improves color strength, retention, and repair effect on hair.

SASAKI AUTHENTIC HAIR COLOR Skin irritation test completed by an external clinical testing center

Study title: Human patch test study for irritation from SASAKI AUTHENTIC HAIR COLOR
 Research institution: OATC Dermatological Clinical Testing Center
 Test product: All shades of SASAKI AUTHENTIC HAIR COLOR (30 colors)
 [Skin Irritation Test Result] All shades of SASAKI AUTHENTIC HAIR COLOR rated as low-irritation

Skin Irritation Index Chart	
Skin Irritation Index	Skin Irritation Range
0.00 - 0.25	Low Irritation Range
0.26 - 1.00	Mild Irritation Range
1.01 - 2.50	Moderate Irritation Range
2.51 - 4.00	Severe Irritation Range

*LAMELLAR : A STRUCTURE WHERE HYDROPHILIC AND HYDROPHOBIC LAYERS ARE ARRANGED IN A REPEATING PATTERN. THIS HELPS KEEP ACTIVE INGREDIENTS STABLE AND ALLOWS EASY ENTRY INTO HAIR OR SKIN
 *QUINONE : A CLASS OF ORGANIC COMPOUNDS MADE BY TURNING EQUAL NUMBERS OF -CH= GROUPS INTO -C(=O)GROUPS THROUGH A DOUBLE BOND REARRANGEMENT, DERIVED FROM AROMATIC SUBSTANCES

HAIR COLOR AUTHENTIC

Tint Image Reference Hair
틴트 이미지 기준모

	Gra.G Gravity Grey	Spa.G Space Grey	Blu.M Blue Moon	Nit.V Nitro Violet	Qua.B Quantum Beige	Sup.G Supernova Grey	Mar.G Mare Green
11	11-Gra.G	11-Spa.G	11-Blu.M	11-Nit.V	11-Qua.B	11-Sup.G	11-Mar.G
9	9-Gra.G	9-Spa.G	9-Blu.M	9-Nit.V	9-Qua.B	9-Sup.G	9-Mar.G
7	7-Gra.G	7-Spa.G	7-Blu.M	7-Nit.V	7-Qua.B	7-Sup.G	7-Mar.G
5	5-Gra.G	5-Spa.G	5-Blu.M	5-Nit.V	5-Qua.B	5-Sup.G	5-Mar.G



Authentic Oxidizing Agent via the MRS System

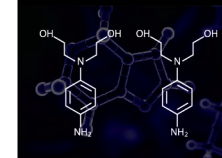
MRS System: Micelle Repulsion Stabilizing System
 (Proprietary method that stabilizes by refining emulsion particles)
 • Best suited for high-chroma color expression in medium and low brightness levels
 • Ammonia odor control and reduced scalp irritation using the LSE method
 • MRS System promotes even color results and stronger conditioning
 • Improved penetration allows deeper, clearer color expression / better color retention

INSTRUCTIONS FOR USE	Gra.G Spa.G Blu.M Nit.V Qua.B Sup.G Mar.G	WHITE NIGHT	OFF THE BLACK
AUTHENTIC AGENT 1 + 2	1 : 1	1 : 3 ~	1 : 1

WHEN COLORING WHITE HAIR, IF THE BLEACHED BASE IS LIGHT, THE OXIDIZING AGENT RATIO CAN BE INCREASED UP TO 1:5

OFF THE BLACK Key Technology

N,N-Bis(2-Hydroxyethyl)-p-Phenylenediamine Sulfate



Strong color payoff and excellent retention! Uses a new type of dye blend technology that supports easier bleaching

Molecular structure includes two Hydroxyethyl groups, creating large dye molecules that resist fading and help reduce re-darkening after fading



[Caution] AUTHENTIC HAIR COLOR Agent 1 must be used with AUTHENTIC HAIR COLOR Agent 2.

THE COLORS IN THIS CHART ARE SAMPLE IMAGES FOR REFERENCE. ACTUAL HAIR COLOR MAY VARY SLIGHTLY DEPENDING ON PRINTING CONDITIONS.

SASAKI PRODUCT GUIDE



HAIR COLOR 헤어 컬러

Caution AUTHENTIC HAIR COLOR Agent 1 must be used with AUTHENTIC HAIR COLOR Agent 2.

SASAKI HAIR COLOR

사사키 헤어컬러

BASE · LOOK · CONTROLLER

AUTHENTIC · OFFTHEBLACK · BASE HIGH COVER



International patents registered in Korea, USA, Japan, France, and China (5 countries) Plant-derived ingredients help prevent hair damage Reduces ammonia odor and scalp irritation Mixes easily, spreads evenly, delivers vivid color, and helps maintain color longer

120 g

SASAKI OXIDIZING AGENT

사사키 헤어컬러 산화제

SASAKI : 3% 6% 9% 12%

AUTHENTIC : 2.7% 6.3%



Helps control ammonia odor and reduce scalp discomfort Blends smoothly for even coverage and helps keep hair soft with strong conditioning benefits

1500 g

COLOR SUPPORT 컬러 서포트

SASAKI COLOR PLUS

사사키 컬러플러스

Silver / Coral / Blue / Pink / Violet / Brown

Bubble-Type Color Shampoo



Applies evenly and gently with a foamy texture Plant-based oils help create a coating layer on the hair surface Color combinations using basic dyes support a variety of tones (pH 5.5) Helps protect damaged hair, improves color retention, and supports vibrant color

300 g

SASAKI ASH PLUS

사사키 애쉬플러스

(Ash+)



Contains bentonite Comfortable dust-free bleach formula Fast, reliable lifting results for brightening hair levels Smooth mixing and application reduce damage during use

500 g

GGO
CGC-HOMEPRO CARE



Vegan

CGC-HOMEPRO

A combination of HOME + PROFESSIONAL, this product offers "expert scalp and hair-type care at home" in a comfortable and affordable way

CGC-HOMEPRO CARE 홈프로 케어

CGC BALANCE SCALP GREEN SHAMPOO

CGC 밸런스 스칼프 그린 샴푸



Helps reduce excess sebum and supports oil and moisture balance Helps control scalp odor and supports elasticity and the maintenance of a healthy scalp

500 g

CGC ANTI-HAIRLOSS BLACK SHAMPOO / TONIC

CGC 안티헤어로스 블랙 샴푸/토닉

Functional formula designed to relieve hair loss symptoms



Helps care for thin, weak hair by relieving hair loss symptoms, dissolving sebum in pores, and softening dead skin cells Provides nourishment to tired scalp and hair, and helps improve the condition of the scalp

500 g / 120 ml

CGC SENSITIVE SCALP ORANGE SHAMPOO / TONIC

CGC 센시티브스칼프 오렌지 샴푸/토닉



Helps calm sensitive scalp and supports the skin barrier to improve elasticity and liveliness Delivers moisture and helps retain it, supports scalp balance, and helps reduce damage

500 g / 120 ml

CGC S&H PURPLE MASK

CGC S&H 퍼플 마스크



Helps improve flexibility in the scalp and hair and supports protection against damage Provides elasticity and hydration to tired scalp and hair Delivers moisture and adherence, increases water retention, and helps maintain the moisture layer

600 ml / 300 ml

CGC BEAUTIFUL CLOUD

CGC 뷰티풀 클라우드

Styling



A leave-in foaming essence that nourishes and softens the hair Contains an amino acid complex and three types of protein that add vitality, protect hair from heat, and help treat damaged strands

200 ml

HOMEPRO PINK SALT PURIFY RED SHAMPOO

홈프로 핑크 솔트 퓨리파이 레드 샴푸



Complete clinical experimental clinical experimental completion of clinical experimental clinical experiments Complete clinical experimental clinical experiments The natural scrub of Himalayan Pink Salt Gently remove dead skin cells and waste products from the scalp and purify them with a refreshing scalp. It is a prescription product specializing in scalp with dandruff care ingredients.

270 g



HAIR CARE 헤어케어

SASAKI NUTRIKEY SHAMPOO

사사키 뉴트리키 샴푸(pH5.5)



Provides moisture and nutrients to help keep hair hydrated
The mildly acidic pH neutralizes residual alkali after chemical treatments and supports hair vitality and color retention

320 g / 750 g / 2000 g

SASAKI NUTRIKEY TREATMENT

사사키 뉴트리키 트리트먼트(pH4.8)



Helps prevent hair damage and gives the hair a smooth feel
Delivers nutrients to maintain healthy hair and adds shine through a coating effect

320 ml / 750 ml / 2000 ml

SASAKI NUTRIKEY ABSOLUTE HYDRO DAMAGE HAIRPACK

사사키 뉴트리키 업솔루트 하이드로 데미지 헤어팩



Supplies moisture to damaged hair with 9 moisturizing ingredients
Replenishes protein to support the condition of damaged hair
Ceramide helps retain moisture in the hair and prevents moisture loss

150 ml / 400 ml

HAIR CARE 헤어케어

SASAKI NUTRIKEY ROOT PLUS SHAMPOO

사사키 뉴트리키 루트플러스 샴푸(pH5.5)

Functional formula designed to relieve hair loss symptoms



Low-irritation test completed
The mildly acidic pH neutralizes residual alkali after chemical treatments and helps maintain hair vitality and color retention

320 g / 750 g

SASAKI CONNECT BOND

사사키 커넥트 본드



Helps form a dense structure that improves the durability of finished hairstyles
Supports elasticity and protects the cuticle surface, providing an alternative to silicone
Helps protect hair weakened by chemical treatments and supports elasticity and strength

300 ml

SASAKI P.P.T

사사키 P.P.T



Adheres to damaged hair, replenishes protein, and helps improve damage while reducing heat-related stress
Increases the effect and longevity of treatments

300 g

PROCESS SUPPORT 시술 서포트

PROCESS SUPPORT 시술 서포트

SASAKI SCALP SUPPORT OIL

사사키 스칼프 서포트 오일



Helps protect the scalp and skin from external irritation
Adheres well with a light feel, making it easy to apply.
The oil ingredients help keep the scalp and skin hydrated

250 ml

SASAKI COLOR REMOVER

사사키 컬러 리무버



Non-drip gel type. Helps reduce skin irritation, gently removes dye residue from the skin, and keeps the skin moisturized after color removal

200 ml

STYLING 스타일링

SASAKI DRY FIX WAX

사사키 드라이 픽스 왁스



Creates a matte finish and helps maintain a flexible style
Contains a vitamin complex that supports scalp protection
Amino acids and plant-based oils help protect damaged hair

100 g

STYLING 스타일링

SASAKI SHINY POMADE WAX

사사키 샤이니 폼어드 왁스

Style modifiable



Allows for easy restyling
Water-based formula rinses clean without residue
Amino acids and plant-based oils help protect damaged hair

100 g

SASAKI PERFECT HOLDING SPRAY

사사키 퍼펙트 홀딩 스프레이



Airy Make Formula helps create a light, voluminous look
Maintains a natural style throughout the day
Amino acids and plant-based oils help protect damaged hair

500 ml

SASAKI NATURAL HOLDING SPRAY

사사키 내추럴 홀딩 스프레이



Delivers instant hold with the Instant Make Formula
Maintains a flexible, long-lasting style throughout the day
Amino acids and plant-based oils help protect damaged hair

500 ml

ESSENCE 에센스

SASAKI AMINO INFUSE MILK ESSENCE

사사키 아미노 인퓨즈 밀크 에센스



Provides a soft, moisturized texture
Supplies nutrients to the hair while amino acids and plant-based oils help protect damaged strands

150 g

SASAKI ELASTIC INHENSING CURL CREAM

사사키 엘라스틱 인헨싱 컬 크림



Creates hydrated, lively waves
Collagen, ceramide, and vitamin E provide nourishment, while amino acids and plant-based oils help shield damaged hair

150 ml

SASAKI AMINO INFUSE OIL

사사키 아미노 인퓨즈 오일



Vitamin E helps improve flexibility and delivers nourishment to the hair
Supports a healthy oil and moisture balance with a light, smooth texture that adds life to the hair

130 ml

CONNECT
ABSOLUTE VALUES

BOND

"CONNECT BOND" STRENGTHENS INTERNAL HAIR STRUCTURE TO IMPROVE RESULTS AFTER CHEMICAL TREATMENTS

PROVIDES HEALTHY GLOSS AND SOFTNESS



300 ml

SASAKI CONNECT BOND

- Helps restore the natural isoelectric point of tired hair and encourages a dense structure to improve the hold of finished hairstyles
- Supports hair elasticity and protects the cuticle surface, serving as a substitute for silicone
- Protects hair weakened by chemical treatments and helps maintain elasticity and strength

Improves Chemical Treatment Durability

Recovers Hair Strength & Texture

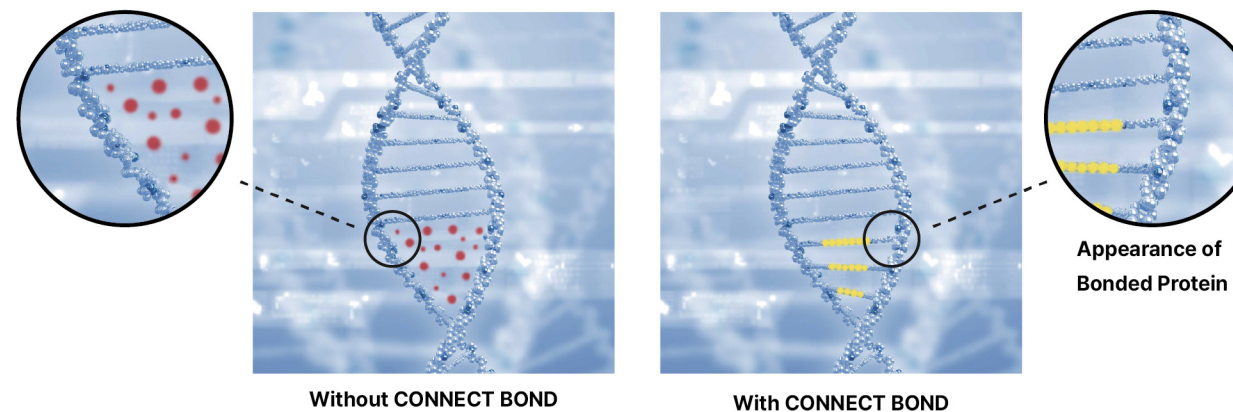
Protects Hair Protein Structure



SASAKI CONNECT BOND PROMOTION PACKAGE

"CONNECT BOND for Reliable Protein Bonding"

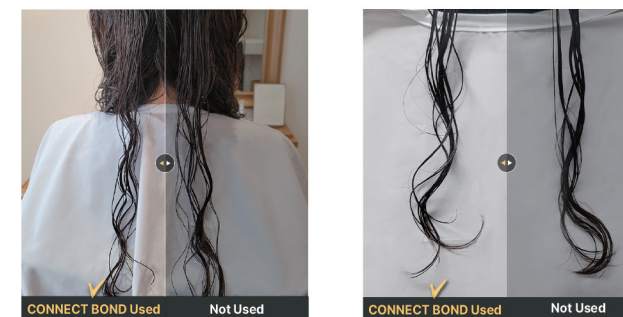
Patent Pending for Quinone Cross-Linking Reaction



Without CONNECT BOND

With CONNECT BOND

Heat Perm Treatment Result



Heat Perm (Setting)

STEP 1) After softening test and removal of solution, apply **bond clinic**, leave for 5 minutes, then rinse
STEP 2) After curl test and neutralization, apply **bond clinic** again, then rinse after the neutralizing time

*Pre-treatment for chemical treatments

Dye treatment result



Dyeing

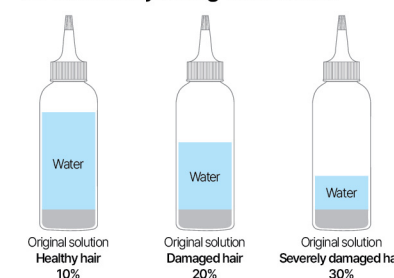
: Add 10% **when mixing** with dye agent 1
(ex: Dye agent 100ml / CONNECT BOND 10ml)
Highly concentrated and high in content, add the exact amount

*Pre-treatment for chemical treatments

*When mixing CONNECT BOND with dye, use immediately

Pre-Treatment for Chemical Treatments / Intermediate Treatment During Perm

A. When adjusting with water



B. When adjusting with original solution

For Pre-Treatment

	Healthy Hair	Damaged Hair	Severely Damaged Hair
Water	100ml	100ml	100ml
CONNECT BOND	10ml(10%)	20ml(20%)	30ml(30%)



SASAKI PROFESSIONAL
BEST BRAND, BEST PRODUCT FOR HAIR SALON

**"We Share Your World,
We Are Committed To Your Success."**



Only with SASAKI

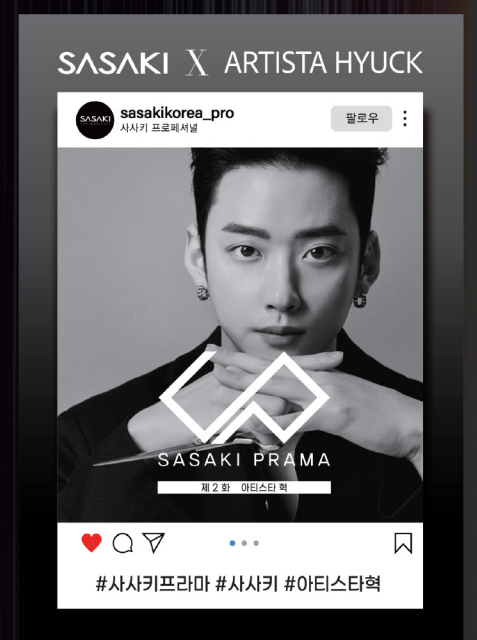
Professional Drama = PRAMA

사사키 프라마는 사사키프로페셔널에서 미용인을 위해 유명 뷰티 인플루언서들과 함께하는 대형 세미나입니다.

SASAKI PRAMA is a major seminar held by SASAKI professional, to encourage beauty professionals by inviting few of named beauty influencers.

Episode 1 : SOODAL SASOON

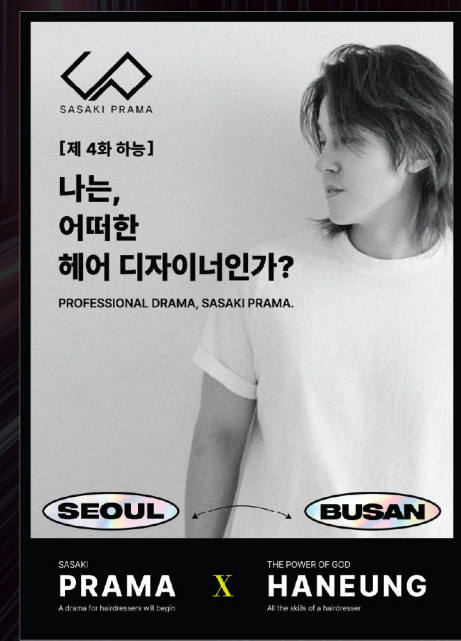
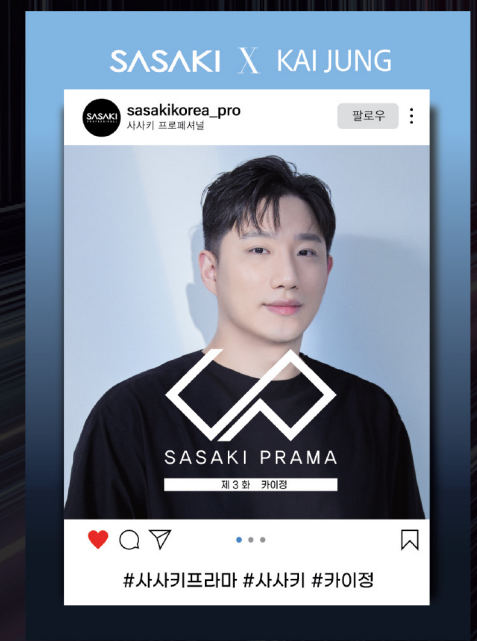
Episode 2 : ARTISTA HYUCK



Episode 3 : KAI JUNG

Episode 4 : HANEUNG

Episode 5 : Y





Scan the QR code to enjoy
SASAKI Professional's recipe

SASAKI[®]
PROFESSIONAL



사사키프로페셔널 X 그로잉대학 X 밝은 새치염색

Professional teaches how to cover up grays



사사키프로페셔널 X 그로잉대학 X 핑크염색

How to bleach and How to dye your hair to pink with a single bleaching



사사키프로페셔널 X 그로잉대학 X 시크릿루틴

How to bleach and dyeing for hidden hair color



사사키프로페셔널 X 그로잉상롱 X 애쉬브라운

COLOR KIT 01 Is it necessary to bleach hair? Ash brown in Level 15



사사키프로페셔널 X 그로잉대학 X 애쉬그레이

A summary how to apply two or more colors / ash gray color



사사키프로페셔널 X 그로잉대학 X 애쉬블루

Without bleaching roots, how to color hair ash-ish



사사키프로페셔널 X 그로잉대학 X 애쉬

A summary how to dye your hair to ash-ish with a single bleaching



COLOR KIT 03 (aka. Color MSG!) How to use controller



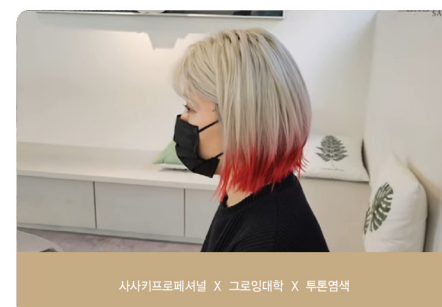
사사키프로페셔널 X 그로잉대학 X 애쉬베이지

How to cover up a mess-up hair with ash beige color



사사키프로페셔널 X 그로잉대학 X 새치커버

Suitable for middle aged women! How to color hair luxuriously



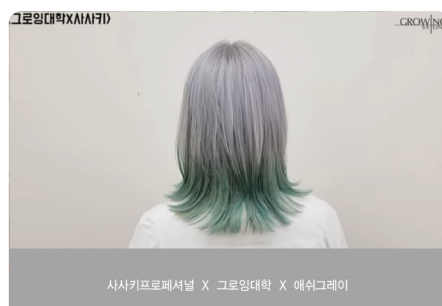
사사키프로페셔널 X 그로잉대학 X 투톤염색

How to bleach white hair without scattering and how to ombre



사사키프로페셔널 X 그로잉대학 X 2022베리페리

The color of 2022, Recipe for berryferry



사사키프로페셔널 X 그로잉대학 X 애쉬그레이

How to bleach roots without scattering / how to ombre with ash gray



사사키프로페셔널 X 그로잉대학 X 헤어케어

Professional teaches how to do a hair care properly



사사키프로페셔널 X 그로잉대학 X 애쉬염색

Professional teaches how to bleach ash-colored hair



사사키프로페셔널 X 그로잉상롱 X 투톤 애쉬그레이

how to bleach black hair and how to do ombre ash gray





Scan the QR code to enjoy
SASAKI Professional's recipe



COLOR KIT 02
Quick coloring to
ice blue



COLOR KIT 03
Must-have time for hair
color, controller



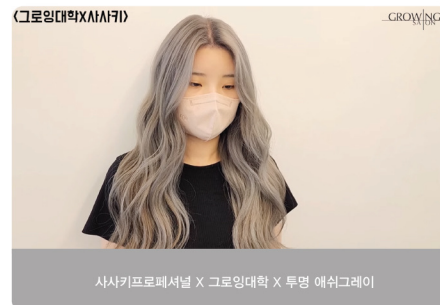
COLOR KIT 04
Covering grays in
10 minutes, how to do
scalp-care



COLOR KIT 05
Professional teaches
how to dye



A recipe of pastel
ash pink



How to bleach and
dye for light-ash gray



A recipe of peach beige



All about us



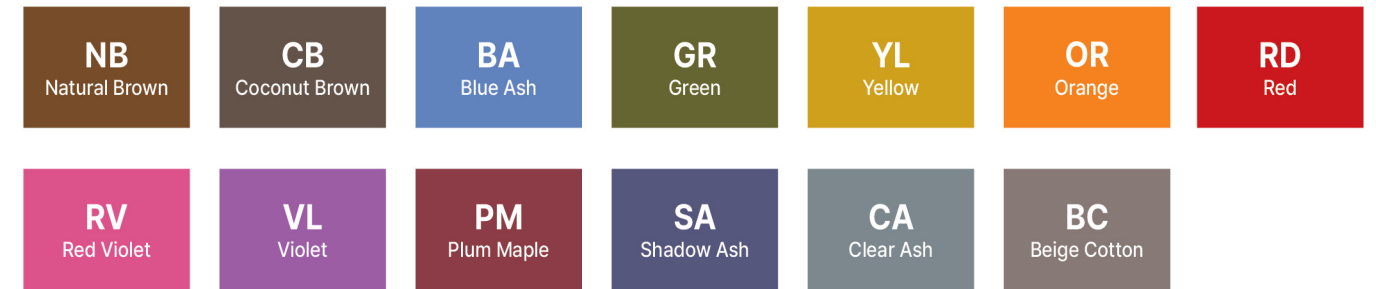
SASAKI
PROFESSIONAL

Join with SASAKI Professional!

- Check various color recipe on our website
- Quick and easy-searching for desired color



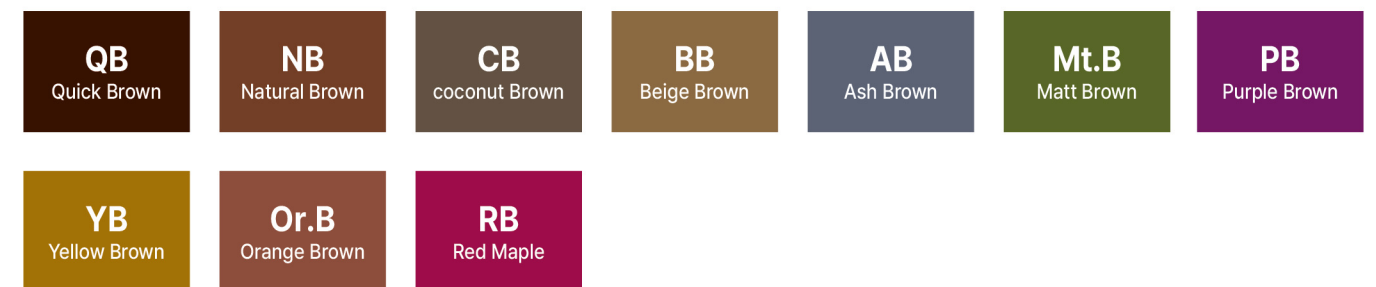
HAIR COLOR LOOK



HAIR COLOR BASE HIGH COVER



HAIR COLOR BASE



HAIR COLOR AUTHENTIC



HAIR COLOR CONTROLLER

