



# CATALOG

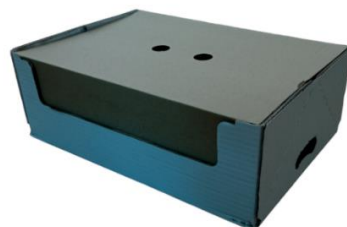
with price list



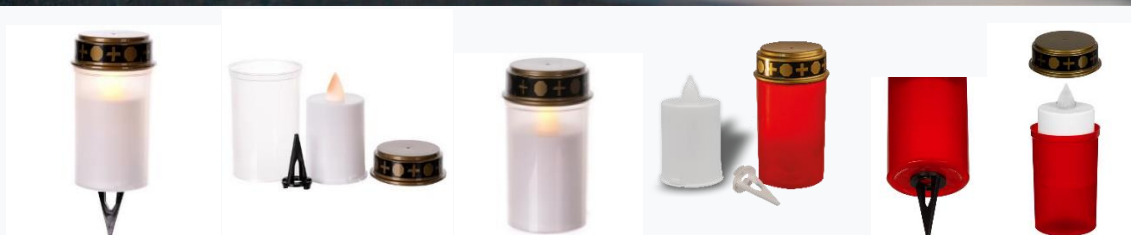
***LED BATTERY OPERATED MEMORIAL CANDLES***

***Important informations:***

- ***All items are packed in 3 ways, depending on item: white carton tray with transparent shrink foil, white shelf-ready box and standard american corrugated brown color carton box.***
- ***All items are produced in our factory in Bosnia and Herzegovina, so the customer do not pay any import customs on our items by import procedure. We can provide EUR1 certificate or statement on export invoice.***
- ***All items are on euro pallets. Customer can bring his own pallets to exchange them before loading or the pallets can be payed by current market price ( price per pallet: 8,00 EUR ). We can also provide non-returnable ( single-use ) pallets ( size 120 x 80 cm ) by price 4,00 EUR per pallet.***
- ***If customer need some personalized labels or packagings in different size or color than our standard size and color, we can make agreement about MOQ and price.***
- ***Payment conditions: 30 % by proforma invoice, rest of 70 % before loading.***
- ***Delivery time: by agreement.***



***Pictures of pallets ( sandwich and standard palletizing ) and transport packagings ( carton trays with shrink foil, shelf-ready boxes and american corrugated brown color carton box ( regular slotted container - RSC )***



## **LED battery operated memorial candle AURA**

**with plastic spike accessory for ground or floral arrangement stabilization**

**EAN: 3870634077474**

**H 13,3 cm x dia. 7,4 cm**

**Gross weight: 100 g, deviation in weight:  $\pm 5\%$**

**OPTION 1: duration up to 60 days ( real flame effect ) in red or transparent plastic cup**

**OPTION 2: duration up to 120 days ( flickering flame effect ) only in red plastic cup**

**Maximum duration depends on weather conditions**

**2 x 1,5 V AA R6 batteries included**

Plastic color: red and transparent; Innovative "twist to open" changing batteries

Standard packaging: 12 pieces, shelf-ready display box.

Pallet height ca. 200 cm, 12 boxes in 1 row, 13 rows on a pallet,

Total 1.872 pieces on the pallet, 1 truck 33 ep 61.776 pieces

Parity EXW central warehouse Lumen d.o.o., 88344 Drinovci, Bosnia and Herzegovina

Standard packaging: carton tray with shrink foil, standard labels size 4,0 cm x 2,5 cm

*Other labels and packaging: price by request.*



## LED battery operated memorial candle K0 with front sticker

**EAN: 3870634079010**

**H 11,5 cm x dia. 6 cm**

**Gross weight: 78 g, deviation in weight:  $\pm 5\%$**

**Duration up to 60 days ( real flame effect ) in red or transparent plastic cup**

**Maximum duration depends on weather conditions**

**2 x 1,5 V AA R6 batteries included**

Plastic color: red or transparent, front sticker Jesus or Mary

Innovative "twist to open" changing batteries

Standard packaging: 24 pieces, shelf- ready display box.

Pallet height ca. 200 cm, 9 boxes in 1 row, 12 rows on a pallet,

Total 2.592 pieces on the pallet, 1 truck 33 ep 85.536 pieces.

Parity EXW central warehouse Lumen d.o.o., 88344 Drinovci, Bosnia and Herzegovina

Standard packaging: carton tray with shrink foil, standard labels size 4,0 cm x 2,5 cm

*Other labels and packaging: price by request.*



## **LED battery operated memorial candle VICTORIA**

**EAN: 3870634066331 ( 60 days duration ); EAN: 3870634066348 ( 120 days duration )**

**H 23,5 cm x dia. 11 cm**

**Gross weight: 125 g, deviation in weight:  $\pm$  5 %**

**OPTION 1: duration up to 60 days ( real flame effect )**

**OPTION 2: duration up to 120 days ( flickering flame effect )**

**Maximum duration depends on weather conditions**

**2 x 1,5 V AA R6 batteries included**

**Plastic color: red and transparent**

**Innovative "twist to open" changing batteries**

**Standard packaging: 12 pieces, shelf-ready display box.**

**Pallet height ca. 200 cm, 8 boxes in 1 row, 8 rows on a pallet,**

**Total 768 pieces on the pallet, 1 truck 33 ep 25.344 pieces**

**Parity EXW central warehouse Lumen d.o.o., 88344 Drinovci, Bosnia and Herzegovina**

**Standard packaging: shelf-ready display box, standard labels size 4,0 cm x 2,5 cm**

***Other labels and packaging: price by request.***



## **LED battery operated memorial candle CLARA**

**EAN: 3870634066355 ( 60 days duration ); EAN: 3870634066362 ( 120 days duration )**

**H 22,5 cm x dia. 9,5 cm**

**Gross weight: 125 g, deviation in weight:  $\pm 5\%$**

**OPTION 1: duration up to 60 days ( real flame effect )**

**OPTION 2: duration up to 120 days ( flickering flame effect )**

**Maximum duration depends on weather conditions**

**2 x 1,5 V AA R6 batteries included**

Plastic color: red and transparent

Innovative "twist to open" changing batteries

Standard packaging: 12 pieces, shelf-ready display box.

Pallet height ca. 200 cm, 8 boxes in 1 row, 8 rows on a pallet,

Total 768 pieces on the pallet, 1 truck 33 ep 25.344 pieces

Parity EXW central warehouse Lumen d.o.o., 88344 Drinovci, Bosnia and Herzegovina

Standard packaging: shelf-ready display box, standard labels size 4,0 cm x 2,5 cm

*Other labels and packaging: price by request.*



## **LED battery operated memorial candle MEMORIA**

**EAN: 3870634066317 ( 60 days duration ); EAN: 3870634066324 ( 120 days duration )**

**H 21,5 cm x dia. 11 cm**

**Gross weight: 125 g, deviation in weight:  $\pm 5\%$**

**OPTION 1: duration up to 60 days ( real flame effect )**

**OPTION 2: duration up to 120 days ( flickering flame effect )**

**Maximum duration depends on weather conditions**

**2 x 1,5 V AA R6 batteries included**

Plastic color: red and transparent

Innovative "twist to open" changing batteries

Standard packaging: 8 pieces, shelf-ready display box.

Pallet height ca. 200 cm, 8 boxes in 1 row, 8 rows on a pallet,

Total 512 pieces on the pallet, 1 truck 33 ep 16.896 pieces

Parity EXW central warehouse Lumen d.o.o., 88344 Drinovci, Bosnia and Herzegovina

Standard packaging: shelf-ready display box, standard labels size 4,0 cm x 2,5 cm

*Other labels and packaging: price by request.*



## LED battery operated memorial candle CROSS

**EAN: 3870634000397**

**H 19,5 cm x 11 cm x 7,8 cm**

**Gross weight: 125 g, deviation in weight:  $\pm 5\%$**

**OPTION 1: duration up to 60 days ( real flame effect )**

**OPTION 2: duration up to 120 days ( flickering flame effect )**

**Maximum duration depends on weather conditions**

**2 x 1,5 V AA R6 batteries included**

Plastic color: red cup, gold lid

Innovative "twist to open" changing batteries

Standard packaging: 10 pieces, carton tray with shrink foil.

Pallet height ca. 200 cm, 9 boxes in 1 row, 9 rows on a pallet,

Total 810 pieces on the pallet, 1 truck 33 ep 26.730 pieces

Parity EXW central warehouse Lumen d.o.o., 88344 Drinovci, Bosnia and Herzegovina

Standard packaging: carton tray with shrink foil, standard labels size 4,0 cm x 2,5 cm

*Other labels and packaging: price by request.*



## LED battery operated memorial candle GLORIA

**EAN: 3870634055731 ( 60 days duration ) ; EAN: 3870634060469 ( 120 days duration )**

**H 17,7 cm x dia. 6,5 cm**

**Gross weight: 100 g, deviation in weight:  $\pm$  5 %**

**OPTION 1: duration up to 60 days ( real flame effect )**

**OPTION 2: duration up to 120 days ( flickering flame effect )**

**Maximum duration depends on weather conditions**

**2 x 1,5 V AA R6 batteries included**

Plastic color: red and transparent

Front labels: pray, rose and heart with cross

Innovative "twist to open" changing batteries

Standard packaging: 15 pieces, shelf-ready display box.

Pallet height ca. 200 cm, 12 boxes in 1 row, 9 rows on a pallet,

Total 1.620 pieces on the pallet, 1 truck 33 ep 53.460 pieces

Parity EXW central warehouse Lumen d.o.o., 88344 Drinovci, Bosnia and Herzegovina

Standard packaging: shelf-ready display box, standard labels size 4,0 cm x 2,5 cm

*Other labels and packaging: price by request.*



## **LED battery operated memorial candle SACRED HEART**

**EAN: 3870634000274**

**H 26,5 cm x 13,5 cm x 9 cm**

**Gross weight: 155 g, deviation in weight:  $\pm 5\%$**

**OPTION 1: duration up to 60 days ( real flame effect )**

**OPTION 2: duration up to 120 days ( flickering flame effect )**

**Maximum duration depends on weather conditions**

**2 x 1,5 V AA R6 batteries included**

Plastic color: red

Lid color: black or gold

Innovative "twist to open" changing batteries

Standard packaging: 7 pieces, cardboard tray with shrink foil.

Pallet height ca. 200 cm, 9 boxes in 1 row, 8 rows on a pallet,

Total 504 pieces on the pallet, 1 truck 33 ep 16.632 pieces

Parity EXW central warehouse Lumen d.o.o., 88344 Drinovci, Bosnia and Herzegovina  
Standard packaging: cardboard tray with shrink foil, standard labels size 4,0 cm x 2,5 cm  
*Other labels and packaging: price by request*



## **LED battery operated memorial candle E-40**

**EAN: 3859890916024**

**H 27 cm x dia. 11 cm**

**Gross weight: 135 g, deviation in weight:  $\pm 5\%$**

**OPTION 1: duration up to 60 days ( real flame effect )**

**OPTION 2: duration up to 120 days ( flickering flame effect )**

**Maximum duration depends on weather conditions**

**2 x 1,5 V AA R6 batteries included**

Plastic color: red

Lid color: black or gold

Innovative "twist to open" changing batteries

Standard packaging: 9 pieces, shelf-ready display box.

Pallet height ca. 200 cm, 8 boxes in 1 row, 8 rows on a pallet,

Total 576 pieces on the pallet, 1 truck = 33 ep = 19.008 pieces

Parity EXW central warehouse Lumen d.o.o., 88344 Drinovci, Bosnia and Herzegovina

Standard packaging: shelf-ready display box, standard labels size 4,0 cm x 2,5 cm

*Other labels and packaging: price by request*



## LED battery operated candle AETERNUM

**EAN: 3870634066300**

**H 10,8 cm x 7,8 cm x 6,1 cm**

**Gross weight: 110 g, deviation in weight:  $\pm 5\%$**

**Duration up to 120 days ( flickering flame effect )**

**2 x 1,5 V AA R6 batteries included**

Body color: white, black, gold, silver, red, purple ... Flame color: red

**Standard packaging in carton self-box ( as on a picture above ), 40 pieces in shelf-ready display box.**

Pallet height ca. 200 cm, 8 boxes in 1 row, 8 rows on a pallet,

Total 2.560 pieces on the pallet, 1 truck = 33 ep = 84.480 pieces



## LED battery operated candle AETERNUM - in bulk

**EAN: 3870634066300**

**2 x 1,5 V AA R6 batteries included**

**Without self-packaging ( in bulk ): 18 pcs / box**

Pallet: 2.430 pcs ( 135 boxes ), 1 truck = 33 ep = 80.190 pcs

Parity EXW central warehouse Lumen d.o.o., 88344 Drinovci, Bosnia and Herzegovina

Standard packaging: shelf-ready display box, standard declaration labels size 4,0 cm x 2,5 cm



## **LED battery operated candle SW-60**

**EAN: 3870634066256**

**H 10,3 cm x dia. 6,3 cm**

**Gross weight: 64 g, deviation in weight:  $\pm 5\%$**

**Duration: up to 60 days ( real flame effect )**

**Maximum duration depends on weather conditions**

**2 x 1,5 V AA R6 batteries included**

**Body and flame color: white or red**

**Innovative "twist to open" changing batteries**

**Standard packaging: 36 pieces, shelf-ready display box.**

**Pallet height ca. 200 cm, 6 boxes in 1 row, 17 rows on a pallet,**

**Total 3.672 pieces on the pallet, 1 truck = 33 ep = 121.176 pieces**

Parity EXW central warehouse Lumen d.o.o., 88344 Drinovci, Bosnia and Herzegovina  
Standard packaging: shelf-ready display box, standard declaration labels size 4,0 cm x 2,5 cm  
*Other labels and packaging: price by request.*



## **LED battery operated candle SW-60 with front stickers**

**EAN: 3870634079195**

**H 10,3 cm x dia. 6,3 cm**

**Gross weight: 64 g, deviation in weight:  $\pm 5\%$**

**Duration: up to 60 days ( real flame effect )**

**Maximum duration depends on weather conditions**

**2 x 1,5 V AA R6 batteries included**

**Standard motives: catholic, angels, orthodox**

**Body and flame color: white or red**

**Standard packaging: 36 pieces, shelf-ready display box**

**Pallet height ca. 200 cm, 6 boxes in 1 row, 17 rows on a pallet,**

**Total 3.672 pieces on the pallet, 1 truck = 33 ep = 121.176 pieces**

Parity EXW central warehouse Lumen d.o.o., 88344 Drinovci, Bosnia and Herzegovina  
Standard packaging: shelf-ready display box, standard declaration labels size 4,0 cm x 2,5 cm



## **LED battery operated candle SW-52 with removable or fixed flame**

**EAN: 3870634079195**

**H 11,3 cm x dia. 5,2 cm**

**Gross weight: 64 g, deviation in weight:  $\pm 5\%$**

**Duration: up to 60 days ( real flame effect ) with transparent, red, yellow, milky-white plastic flame  
or up to 120 days ( flickering flame effect ) with red or yellow plastic flame**

**Maximum duration depends on weather conditions**

**2 x 1,5 V AA R6 batteries included**

Flames color: red, yellow and transparent, or milky-white for fixed flame

Innovative "twist to open" changing batteries

Standard packaging: 50 pieces, american folding carton box ( regular slotted container - RSC ).

Pallet height ca. 200 cm, 6 boxes in 1 row, 15 rows on a pallet,

Total 4.500 pieces on the pallet, 1 truck 33 ep 148.500 pieces

Parity EXW central warehouse Lumen d.o.o., 88344 Drinovci, Bosnia and Herzegovina

Standard packaging: american folding carton box, standard declaration labels size 4,0 cm x 2,5 cm



## **LED battery operated candle SW-52 mixed flames in red color**

**EAN: 3870634079195**

**H 11,3 cm x dia. 5,2 cm**

**Gross weight: 64 g, deviation in weight:  $\pm 5\%$**

**Duration: up to 60 days ( real flame effect )**

**or up to 120 days ( flickering flame effect )**

**Maximum duration depends on weather conditions**

**2 x 1,5 V AA R6 batteries included**

**Flame shapes: standard flame, angel, cross, heart**

**Flames color: red and transparent**

**Innovative "twist to open" changing batteries**

**Standard packaging: 50 pieces, american folding carton box ( regular slotted container - RSC ).**

**Pallet height ca. 200 cm, 6 boxes in 1 row, 15 rows on a pallet,**

**Total 4.500 pieces on the pallet, 1 truck 33 ep 148.500 pieces**

**Parity EXW central warehouse Lumen d.o.o., 88344 Drinovci, Bosnia and Herzegovina**

**Standard packaging: american folding carton box, standard declaration labels size 4,0 cm x 2,5 cm**



## **LED battery operated candle SW-52 mixed flames in transparent color**

**EAN: 3870634079195**

**H 11,3 cm x dia. 5,2 cm**

**Gross weight: 64 g, deviation in weight:  $\pm 5\%$**

**Duration: up to 60 days ( real flame effect ) with transparent plastic flame color**

**Maximum duration depends on weather conditions**

**2 x 1,5 V AA R6 batteries included**

Flame shapes: standard flame, angel, cross, heart

Flames color: red and transparent

Innovative "twist to open" changing batteries

Standard packaging: 50 pieces, american folding carton box ( regular slotted container - RSC )

Pallet height ca. 200 cm, 6 boxes in 1 row, 15 rows on a pallet,

Total 4.500 pieces on the pallet, 1 truck 33 ep 148.500 pieces

Parity EXW central warehouse Lumen d.o.o., 88344 Drinovci, Bosnia and Herzegovina

Standard packaging: american folding carton box, standard declaration labels size 4,0 cm x 2,5 cm



**LED battery operated candle SW-52 with front sticker - flames in mixed colors**

**EAN: 3870634079195**

**H 11,3 cm x dia. 5,2 cm**

**Gross weight: 64 g, deviation in weight:  $\pm 5\%$**

**Duration: up to 60 days ( real flame effect ) with transparent, red or yellow plastic flame  
or up to 120 days ( flickering flame effect ) with red or yellow plastic flame**

**Maximum duration depends on weather conditions**

**2 x 1,5 V AA R6 batteries included**

Flames color: red, yellow and transparent

Innovative "twist to open" changing batteries

Standard packaging: 50 pieces, american folding carton box ( regular slotted container - RSC ).

Pallet height ca. 200 cm, 6 boxes in 1 row, 15 rows on a pallet,

Total 4.500 pieces on the pallet, 1 truck 33 ep 148.500 pieces

Parity EXW central warehouse Lumen d.o.o., 88344 Drinovci, Bosnia and Herzegovina

Standard packaging: american folding carton box, standard declaration labels size 4,0 cm x 2,5 cm

## ABOUT US

**LUMEN d.o.o.** is one of the leading producers of **paraffin memorial candles** and **LED battery operated memorial candles**.

This family company was established in **1986**.

Its production facilities are situated in Bosnia and Herzegovina ( Drinovci ), with 4 branches in Sarajevo, Banja Luka, Međugorje and Zagreb.

Having more than **37 years of experience**, the company is constantly developing and improving in every area of its activity.

**The quality of our products is guaranteed** by highly educated employees and modern production lines. We focus on expanding and updating our offer, as a result of which our products can be found in many countries. **Reliability and innovation** make us strong and reliable business partner.

- LUMEN tries its best **to stay close** to its employees, customers and consumers.
- We place importance on **friendly and long-term relationships**.
- Our products are created to **satisfy people's needs**.
- LUMEN offers thoughtful solutions in the field of **private labels**.
- We show **consideration for the natural environment** and the society.



*Lumen d.o.o. - headquarter, factory and central warehouse in Drinovci, Bosnia and Herzegovina*

### **Lumen d.o.o.**

Dubrava bb

88344 Drinovci

Bosnia and Herzegovina

[www.lumen.ba](http://www.lumen.ba) ;

Contact: Božidar Juričić, sales manager; email: [bozidar.juricic@lumen.ba](mailto:bozidar.juricic@lumen.ba) ; P: + 387 39 672 112;