

KAOYI LIGHTING

contact us

Email: sales@kaoyi.com

Kaoyi Electronic Co., Ltd. Headquarter in Taiwan.

Tel: 886(0)4-7365539
Fax: 886(0)4-7369740
Add: No.241, Sec 1, Meiliao Road, Homei Town, Changhua County,
Taiwan, China
Postcode: 508

Xiamen Kaotec Electronic Technologic Co., Ltd.

Tel: 86(0)592-5688618 / 86(0)592-5622999
Fax: 86(0)592-5688658 / 86(0)592-5688789
Add: No.66, Gaoqi North 2nd Road, Fujian Pilot Free Trade Zone,
Xiamen, China
Postcode: 361006

Zhangzhou Kaotec Electronic Technologic Co., Ltd.

Tel: 86(0)596-6016999
Fax: 86(0)596-6016008
Add: No. 2, Cailong Avenue, Yunling Industrial Development Zone,
Yunxiao County, Zhangzhou City, Fujian, China
Postcode: 363300

Zhangzhou Kaosun Electronic Technologic Co., Ltd.

Tel: 86(0)596-8312799
Fax: 86(0)596-8312799
Add: Guanshan Industrial Park, Wu'an Town,
Changtai County, Zhangzhou City, Fujian, China
Postcode: 363900



www.kaoyi.com



WORK LIGHTS



Corporate Story



KAOYI LIGHTING GROUP

Kaoyi, a professional R&D and manufacturing company of lighting products, was established in Taiwan in 1985 and successively set up factories in Dongguan, Xiamen and Zhangzhou City in mainland China.

We are committed to developing cutting-edge technology, developing and manufacturing electronic transformers, ballasts, dimmers, energy-saving lamps and other lighting electronic products, and at the

same time developing and manufacturing dimmers, drivers, LED lights and smart products in line with the trend of lighting industry.

Products are exquisite in design and complete in variety, and are exported to Europe, Oceania, North America and other parts of the world, providing users with the most comfortable lighting experience to go with various atmospheres in need.

Since 1985



Kaoyi Electronic Co., Ltd.

Headquarter
R&D center
Sales center



Xiamen Kaotec Electronic Technologic Co., Ltd.

6,500m²
Production base
R&D center
Sales center



Zhangzhou Kaotec Electronic Technologic Co., Ltd.

25,000 m²
Production base



Zhangzhou Kaosun Electronic Technologic Co., Ltd.

35,000m²
Production base

Work Lights

Based on its cutting-edge technologies in electrical and mechanical designs and professional manufacture capabilities in lighting industry, Kaoyi has developed this new product line covering a variety of work lights with superior quality across the entire range.

Powerful, multi-functional, flexible, compact and easy to handle, Kaoyi work lights are made for both professionals who needs the best tool and these who

wants to have standby power for living or camping or in emergency.

All the work lights are developed to be extremely durable, energy saving, safe and reliable. Short circuit protection, overcharge & over-discharge protection, reversible battery protection are ensured. Certified adapters are adopted. Products are certified with CE. They are manufactured by our own factories and subject to strict 100% quality controls.

Application



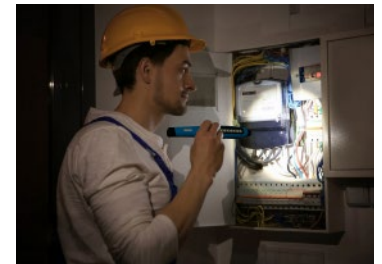
Working



Living



Camping



Emergency



Rechargeable LED Work Light KIT-6805WS-00



Feature

- ▶ **FRONT HIGH EFFICIENCY COB LED**
Up to 500Lm, providing superior lighting for your work environment.
- ▶ **TOP HIGH POWER LED**
Up to 100Lm, can used as a flashlight to provide effective and clear illumination to specific target.
- ▶ **ULTRA-THIN LIGHTING PART**
Ultra-thin design (0.3 " / 7.8mm) allows lighting in narrow and inaccessible work areas.
- ▶ **CONCEALED METAL HOOK**
Concealed metal hook on the bottom can be rotated for hanging or carrying with.
- ▶ **POWERFUL MAGNET**
Powerful magnet allows lamp to be positioned securely.
- ▶ **BRIGHTNESS MEMORY**
Switch on brightness is saved when it is switched on for 2s.



Specifications

Model No.	KIT-6805WS-00	
Light source	Front light 7W COB; Top light 3W 3030 LED	
Wattage	Front light 2.1W (50%) / 4.2W (100%); Top light 1.3W	
Luminous flux(front)	250Lm (50%) / 500Lm (100%)	
Luminous flux(top)	150Lm	
Color Temp.	5700-6500K	
CRI	≥70	
Beam angle	Front light 120°	Top light ≤18.5°
Operating time	Front light 5hrs (50%) / 2.5hrs (100%) Top light 7hrs	
Charging time	3.5hrs	
Battery	3.7V 2600mAh Li-ion	
Protection class	IP42	
Cable	1m, type-C	
Input	5V 1.0A	
Dimension	53.1*31.3*297.5mm	
Net weight	423g	

Rechargeable LED Work Light KIT-650XPS-00



Feature

- ▶ **HIGH EFFICIENCY COB/SMD LED**
Up to 400Lm/90Lm, providing superior lighting for your work environment.
- ▶ **BRIGHTNESS LEVEL SELECTABLE**
Top lighting and two levels of front light lighting selectable for application needs.
- ▶ **150 ° FOLDABLE DESIGN**
Offering illumination to large angle.
- ▶ **DUAL POWERFUL MAGNETS**
Powerful magnet in the back and bottom for flexible positioning.
- ▶ **FOLDING HOOK**
Hook on the top offers more light angle possibilities and frees hands.
- ▶ **SLIM AND LIGHT DESIGN**
Easy to carry and suitable for different applications.



Specifications

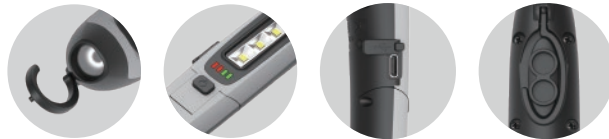
Model No.	KIT-650XPS-00	
Light source	Front light 8*0.5W 2835 LED (KIT-6509PS-00); Front light 3W COB (KIT-6502PS-00)	
Wattage	Front light 2W (50%) / 4W (100%); Top light 1.5W	
Luminous flux(front)	200Lm (50%) / 400Lm (100%)	
Luminous flux(top)	90Lm	
Color Temp.	5700-7500K	
CRI	≥70	
Beam angle	Front light 90°	Top light 40°
Operating time	Front light 5hrs (50%) / 3hrs (100%); Top light 7hrs	
Charging time	4.5hrs	
Battery	18650 3.7V 2600mAh Li-ion	
Protection class	IP20	
Cable	1m, TYPE-C USB	
Input	DC5V 1.0A	
Dimension	238*37*33mm	
Net weight	160g	

Rechargeable LED Work Light KIT-6507PS-00



Feature

- ▶ **HIGH EFFICIENCY COB/SMD LED**
Up to 200Lm/80Lm, providing superior lighting for your work environment.
- ▶ **BRIGHTNESS LEVEL SELECTABLE**
Top lighting and two levels of front light lighting selectable for application needs.
- ▶ **100 ° FOLDABLE DESIGN**
Offering illumination to large angle.
- ▶ **DUAL POWERFUL MAGNETS**
Powerful magnet in the back and bottom for flexible positioning.
- ▶ **FOLDING HOOK**
Hook on the top offers more light angle possibilities and frees hands.
- ▶ **SLIM AND LIGHT DESIGN**
Easy to carry and suitable for different applications.



Specifications

Model No.	KIT-6507PS-00	
Light source	Front light 6*0.5W 2835 LED Top light 1W 3535 LED	Operating time Front light 5hrs (50%) / 2.5hrs(100%);Top light 6hrs
Wattage	Front light 1.2W(50%)/2.5W(100%) Top light 1W	Charging time 2.5hrs
Luminous flux(front)	100Lm(50%)/200Lm(100%)	Battery 17500 3.7V 1200mAH Li-ion
Luminous flux(top)	80Lm	Protection class IP20
Color Temp.	5700-7500K	Cable 1m, TYPE-C USB
CRI	≥70	Input DC5V 1.0A
Beam angle	Front light 90° Top light 40°	Dimension 200*31*28mm
		Net weight 130g



Rechargeable LED Work Light with UV LED KIT-650XPS-UV



Feature

- ▶ **HIGH EFFICIENCY COB/SMD LED**
Up to 400Lm, providing superior lighting for your work environment.
- ▶ **UV LED ON TOP FOR LEAKAGE DETECTION**
UV light source provides 395nm wavelength UV for leakage detection.
- ▶ **BRIGHTNESS LEVEL SELECTABLE**
Top lighting and two levels of front light lighting selectable for application needs.
- ▶ **150 ° FOLDABLE DESIGN**
Offering illumination to large angle.
- ▶ **DUAL POWERFUL MAGNETS**
Powerful magnet in the back and bottom for flexible positioning.
- ▶ **FOLDING HOOK**
Hook on the top offers more light angle possibilities and frees hands.
- ▶ **SLIM AND LIGHT DESIGN**
Easy to carry and suitable for different applications.



Specifications

Model No.	KIT-650XPS-UV	
Light source	Front light 8*0.5W 2835 LED (KIT-6509PS-UV); Front light 3W COB (KIT-6502PS-UV); Top light UV LED	Operating time Front light 5hrs (50%) / 3hrs (100%); Top light 7hrs
Wattage	Front light 2W (50%) / 4W (100%); Top light 1.5W	Charging time 4.5hrs
Luminous flux(front)	200Lm (50%) / 400Lm (100%)	Battery 18650 3.7V 2600mAh Li-ion
UV wavelength (top)	395nm	Protection class IP20
Color Temp.	5700-7500K	Cable 1m, TYPE-C USB
CRI	≥70	Input DC5V 1.0A
Beam angle	Front light 90° Top light 40°	Dimension 238*37*33mm
		Net weight 160g



Rechargeable LED Work Light KIT-9502PS-00



Feature

- ▶ **HIGH EFFICIENCY COB/SMD LED**
Up to 360Lm/90Lm, providing superior lighting for your work environment.
- ▶ **BRIGHTNESS LEVEL SELECTABLE**
Top lighting and two levels of front light lighting selectable for application needs.
- ▶ **150 ° FOLDABLE DESIGN**
Offering illumination to large angle.
- ▶ **DUAL POWERFUL MAGNETS**
Powerful magnet in the back and bottom for flexible positioning.
- ▶ **FOLDING HOOK**
Hook on the top offers more light angle possibilities and frees hands.
- ▶ **IP65 RATED**
High level of water and dust resistance.



Specifications

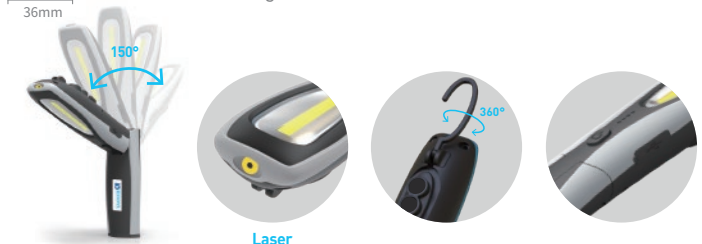
Model No.	KIT-9502PS-00	
Light source	Front light 1*3W COB; Top light 1W 3535 LED	
Wattage	Front light 1.5W (50%) / 3W (100%); Top light 1W	Charging time 4.5hrs
Luminous flux(front)	160Lm (50%) / 360Lm (100%)	Battery 18650 3.7V 2600mAh Li-ion
Luminous flux(top)	90Lm	Protection class IP65
Color Temp.	5700-6500K	Cable 1m, micro usb
CRI	≥80	Input DC5V 1.0A
Beam angle	Front light 90° Top light 40°	Dimension 242*38*36mm
		Net weight 200g

Rechargeable LED Work Light with Laser Pointer KIT-9502PS-LD



Feature

- ▶ **HIGH EFFICIENCY COB/LASER**
Up to 360Lm, providing superior lighting for your work environment.
- ▶ **LASER DESIGN**
FDA certificated laser on the top provides 650nm/≤1mW wavelength.
- ▶ **BRIGHTNESS LEVEL SELECTABLE**
Top laser and two levels of front light lighting selectable for application needs.
- ▶ **150 ° FOLDABLE DESIGN**
Offering illumination to large angle.
- ▶ **DUAL POWERFUL MAGNETS**
Powerful magnet in the back and bottom for flexible positioning.
- ▶ **FOLDING HOOK**
Hook on the top offers more light angle possibilities and frees hands.
- ▶ **IP65 RATED**
High level of water and dust resistance.



Specifications

Model No.	KIT-9502PS-LD	
Light source	Front light 1*3W COB; Top laser	
Wattage	Front light 1.5W (50%) / 3W (100%); Top laser	Charging time 4.5hrs
Luminous flux(front)	160Lm (50%) / 360Lm (100%)	Battery 18650 3.7V 2600mAh Li-ion
Laser class (top)	650nm, ≤1mW	Protection class IP65
Color Temp.	5700-6500K	Cable 1m, micro usb
CRI	≥80	Input DC5V 1.0A
Beam angle	Front light 90°	Dimension 242*38*36mm
		Net weight 200g



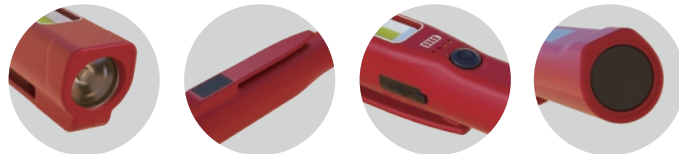
Rechargeable LED Work Light - Pen Light

KIT-2802PS-00



Feature

- ▶ **HIGH EFFICIENCY COB/SMD LED**
Up to 150Lm/90Lm, providing superior lighting for your work environment.
- ▶ **BRIGHTNESS LEVEL SELECTABLE**
Top lighting and two levels of front light lighting selectable for application needs.
- ▶ **DUAL POWERFUL MAGNETS**
Powerful magnet at the back and bottom for flexible positioning.
- ▶ **PEN SHAPE DESIGN**
Easy to put in pocket or hang on belt.
- ▶ **SMALL SIZE**
Easy to carry with to anywhere.



Specifications

Model No.	KIT-2802PS-00	Operating time	Front light 4.5hrs (50%) / 3hrs (100%) ; Top light 5.5hrs
Light source	Front light 1*2W COB; Top light 1W 3030 LED	Charging time	3hrs
Wattage	Front light 1W (50%) / 2W (100%); Top light 0.5W	Battery	14650 3.7V 800mAh Li-ion
Luminous flux(front)	90Lm (50%) / 150Lm (100%)	Protection class	IP20
Luminous flux(top)	50Lm	Cable	1m. micro usb
Color Temp.	5700-6500K	Input	DC5V 1.0A
CRI	≥70	Dimension	168*20*25mm
Beam angle	Front light 120° Top light 40°	Net weight	70g

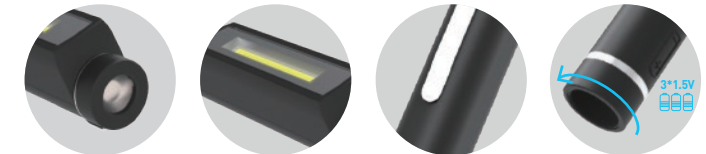
LED Work Light - Pen Light

KIF-2712PS-00



Feature

- ▶ **HIGH EFFICIENCY SMD LED**
Up to 200Lm/100Lm, providing superior lighting for your work environment.
- ▶ **BRIGHTNESS LEVEL SELECTABLE**
Top lighting and two levels of front light lighting selectable for application needs.
- ▶ **POWERFUL MAGNET ON BOTTOM**
A powerful magnet on bottom to free hands
- ▶ **METAL POCKET CLIP**
Easy to put in pocket or hang on belt.
- ▶ **SMALL SIZE**
Easy to carry with to anywhere.
- ▶ **BATTERY REPLACEABLE**
Use 3*1.5V AAA alkaline batteries for continuous use.



Specifications

Model No.	KIT-2712PS-00	Operating time	Front light 8hrs (50%) / 4hrs (100%); Top light 8hrs
Light source	Front light 12*0.5W 2835 LED; Top light 1W 3030 LED	Charging time	/
Wattage	Front light 1W (50%) / 2W (100%); Top light 1W	Battery	AAA*3 alkaline battery
Luminous flux(front)	100Lm (50%) / 200Lm (100%)	Protection class	IP20
Luminous flux(top)	100Lm	Cable	/
Color Temp.	6000-7000K	Input	/
CRI	≥70	Dimension	176*φ18*24mm
Beam angle	Front light 90° Top light 40°	Net weight	62g



Rechargeable LED Work Light KIT-680XPS-00



Feature

- ▶ **HIGH EFFICIENCY COB/SMD LED**
Up to 400Lm/90Lm, providing superior lighting for your work environment.
- ▶ **BRIGHTNESS LEVEL SELECTABLE**
Top lighting and two levels of front light lighting selectable for application needs.
- ▶ **150 ° FOLDABLE DESIGN**
Offering illumination to large angle.
- ▶ **DUAL POWERFUL MAGNETS**
Powerful magnet in the back and bottom for flexible positioning.
- ▶ **FOLDING HOOK**
Hook on the top offers more light angle possibilities and frees hands.



Specifications

Model No.	KIT-680XPS-00	
Light source	Front light 6*0.5W 2835 LED, Front light 3W COB; Top light 1W 3535 LED	Operating time Front light 6.5hrs (50%) / 4hrs (100%); Top light 8hrs
Wattage	Front light 1.5W (50%) / 3W (100%); Top light 1W	Charging time 3.5hrs
Luminous flux(front)	150Lm (50%) / 300Lm (100%)	Battery 18650 3.7V 2600mAh Li-ion
Luminous flux(top)	90Lm	Protection class IP20
Color Temp.	6000-7000K	Cable 1m, micro usb
CRI	≥70	Input DC5V 1.0A
Beam angle	Front light 90° ; Top light 40°	Dimension 235*35.5*28mm
		Net weight 160g

Rechargeable LED Work Light - Sterilamp KCF-8803PS-UVC



Feature

- ▶ **UV EFFICIENT DISINFECTION**
Efficient disinfection and sterilization - 275nm, 10cm distance, 10seconds, killing 99.9% of bacteria.
- ▶ **MULTIPLE APPLICATIONS**
Home use, kitchen, cabinet, bathroom, or to be carried with while traveling to use in hotel.
- ▶ **OPERATION TIME DISPLAY**
LCD can display sterilization time for convenient use.
- ▶ **MULTIPLE FUNCTIONS**
Both lighting and sterilization.
- ▶ **UV RESISTANCE PLASTIC**
UV resistance plastic is used.

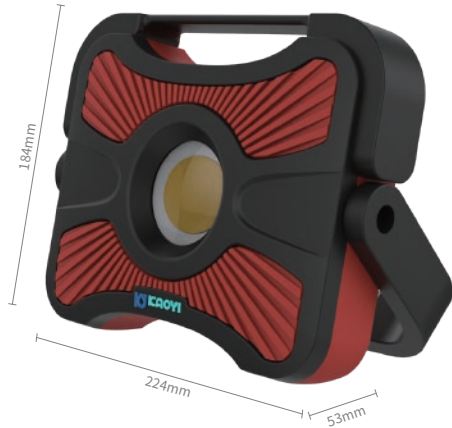


Specifications

Model No.	KCF-8803PS-UVC	
Light source	Front light 3535 UVC+UVA LED; Top light 1W 3535 LED	Operating time UVC light 1 month (20times/day); Top light 6hrs
Wattage	Front light 1.5W (50%) / 3W (100%); Top light 1W	Charging time 4.5hrs
Luminous flux(front)	/	Battery 3.7V/1350mAh Li-ion
Luminous flux(top)	90Lm	Protection class IP20
Color Temp.	Top light 6000-7000K	Cable 1m, TYPE-C
CRI	≥70	Input DC5V 1.0A
Beam angle	Top light 40°	Dimension 150*37*14mm
		Net weight 56g

Rechargeable LED Work Light (Flood Light)

KIT-8840WS-BHT



Feature

- ▶ **HIGH POWER COB**
Up to 40W providing superior lighting.
- ▶ **BRIGHTNESS SELECTABLE**
Brightness is adjustable in 5 steps with indicator showing the level.
- ▶ **DUAL FUEL SYSTEM**
Power supply by either cable charging or Li-ion battery.
- ▶ **POWER BANK FUNCTION**
Can be used as power back to charging devices (output 5V 1A).
- ▶ **IP66 RATED LEVEL**
High dust and water resistance level allows outdoor use.



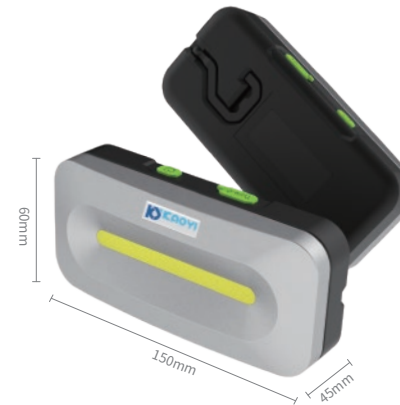
Specifications

Model No.	KIT-8840WS-BHT		
Light source	High power 40W COB		
Wattage	Five steps 8W-16W-24W-32W-40W		
Luminous flux(front)	800Lm - 1600Lm - 2400Lm - 3200Lm - 4000Lm		
Luminous flux(top)	/		
Color Temp.	6000-7000K		
CRI	≥80		
Beam angle	Front light 140°		
Operating time	10hrs - 5hrs - 3.5hrs - 2.5hrs - 2hrs		
Charging time	4hrs		
Battery	11.1V/8000mAh Li-ion		
Protection class	IP66		
Cable	1.2m		
Input	DC13.2V / 5A (output DC5V/1A)		
Dimension	224*184*53mm		
Net weight	1930g (Aluminum + POM body)		



Rechargeable LED Work Light (Flood Light)

KIT-8510WS-00



Feature

- ▶ **HIGH EFFICIENCY COB LED + CONSTANT CURRENT POWER**
Up to 1000Lm, providing superior lighting for your work environment. CC circuit providing stable power supply.
- ▶ **CONCEALED HOOK + POWERFUL MAGNET**
Concealed hook on the back can be rotated for hanging or carrying with. Powerful magnet allows lamp to be positioned securely.
- ▶ **MOUNTING**
Mounting hole at the bottom allows to be used with a telescopic triangle bracket for wider lighting area.
- ▶ **HUMAN BODY RECOGNITION SYSTEM**
Build-in microwave radar system within 3-5 meters, being safe and reliable and energy saving.
- ▶ **CAN BE POWERED BY SOLAR PANEL**
It can be powered by solar energy when being connected to a solar panel.



Specifications

Model No.	KIT-8510WS-00		
Light source	Front light 10W COB		
Wattage	Front light 5W (50%) / 10W (100%)		
Luminous flux(front)	500Lm (50%) / 1000Lm (100%)		
Luminous flux(top)	/		
Color Temp.	Front light 120°		
CRI	6000K		
Beam angle	≥80		
Operating time	Front light 3.6hrs (50%) / 1.8hrs (100%)		
Charging time	4 hrs		
Battery	3.7V 4000mAh Li-ion		
Protection class	IP65		
Cable	1m, type-C		
Input	DC5V 2.0A		
Dimension	150*60*45mm		
Net weight	289g		

Multi-function LED Work Light with Power Bank

KCT-8502PS-00



Feature

- ▶ **HIGH EFFICIENCY LED**
Front light up to 300Lm and top light up to 100Lm providing superior lighting.
- ▶ **BRIGHTNESS LEVEL SELECTABLE**
Top lighting and two levels of front light lighting selectable for application needs.
- ▶ **POWER BANK FUNCTION**
Can be used as power bank to charge devices (output 5V 2.4A).
- ▶ **TYPE-C INPUT/OUTPUT DRP PORT**
TYPE-C DRP (Dual Role Port) can automatically identify the charging and discharging attributes of the inserted device. With Try.SRC function, when the connected device is a DRP device, it can charge the device first.
- ▶ **POWERFUL MAGNET**
Powerful magnet allows lamp to be positioned securely.
- ▶ **COMPACT DESIGN**
Being compact and easy to carry.



Input or Output

Specifications

Model No.	KCT-8502PS-00	Operating time	Front light 15hrs (50%) / 7.5hrs (100%); Top light 20hrs
Light source	Front light 5W COB; Top light 3W 3535 LED	Charging time	3.5hrs
Wattage	Front light 1.5W (50%) / 3W (100%); Top light 1W	Battery	3.7V 4900mAh Li-ion
Luminous flux(front)	150Lm (50%) / 300Lm (100%)	Protection class	IP42
Luminous flux(top)	100Lm	Cable	1m, type-C
Color Temp.	5700-6500K	Input	DC5V/2.1A
CRI	≥70	Output	DC5V/2.4A
Beam angle	Front light 120° Top light ≤18.5°	Dimension	93*40*31mm
		Net weight	150g



Rechargeable LED Work Light (Flood Light)

KIT-5506WS-00



Feature

- ▶ **HIGH EFFICIENCY DUAL COLOR TEMPERATURE SMD/COB LED (UP TO 600Lm) + CONSTANT CURRENT POWER**
- ▶ **HIGH POWER SPOT LIGHT ON TOP (UP TO 150Lm)**
- ▶ **ULTRA HIGH CRI LED (CRI ≥ 97)**
- ▶ **BRIGHTNESS DIMMABLE AND COLOR TEMPERATURE TUNABLE**
- ▶ **FIND MY DEVICE FUNCTION**
The device features a remote key that activates a sound and light alarm when touched, allowing for easy location.
- ▶ **FOLDABLE BASE DESIGN**
180° folding design offering the ultimate in flexible positioning
- ▶ **360° SWIVEL HOOK ON THE TOP + POWERFUL MAGNET**
- ▶ **BELT/POCKET CLIP TO KEEP THE LIGHT HANDY AT ALL TIMES**
- ▶ **BATTERY REPLACEABLE**



Specifications

Model No.	KIT-5506WS-00	Operating time	Front light 2-6hrs, Top light 8hrs
Light source	Front light 6W SMD (KIT-5506WS-SMD) Front light 6W COB (KIT-5506WS-COB)	Charging time	4-4.5hrs
Wattage	Front light 6W, Top light 1.5W	Battery	3.7V 3400mAh Li-ion
Luminous flux(front)	600Lm (stepless dimming)	Protection class	IP20
Luminous flux(top)	150Lm	Cable	1m, type-C
Color Temp.	Front 2700-9000K, Top 6000K (KIT-5506WS-SMD) Front 6000K, Top 6000K (KIT-5506WS-COB)	Input	DC5V 1.0A
CRI	Front light >97, Top light >80	Dimension	61*35*120mm
Beam angle	Front light 120°, Top light ≤18°	Net weight	210g