



# KAOYI COLLECTION

Dimmer Switch  
LED Driver

More Than Lighting



# Corporate Story

Zhangzhou  
Kaosun Electronic

Zhangzhou  
Kaotec Electronic

Xiamen  
Kaotec Electronic

Taiwan  
Kaoyi Electronic

## Since 1985



Kaoyi Electronic Co., Ltd.

Headquarter  
R&D center  
Sales center



Xiamen Kaotec Electronic Technologic Co., Ltd.

6,500m<sup>2</sup>  
Production base  
R&D center  
Sales center



Zhangzhou Kaotec Electronic Technologic Co., Ltd.

25,000 m<sup>2</sup>  
Production base



Zhangzhou Kaosun Electronic Technologic Co., Ltd.

35,000m<sup>2</sup>  
Production base

## KAOYI LIGHTING GROUP

Kaoyi, founded in 1985 in Taiwan, devoted itself in developing the latest technology to power and control lights in different eras. We provide the most comfortable lighting experience for users to go with various atmospheres in need.

With a professional and experienced R&D team of mechanical design, electrical circuit design and software, hardware development, we are committed to developing the cutting-edge technology with a large number of patents and certifications being the best advertisement for product development. Our main product lines include dimmers, LED drivers, luminaries, worklights in line with the trend of lighting industry, among which dimmable products are our strength.

All three factories in Mainland China with over 66,000 square meters of production area in total are built and operated by our own to ensure the

stability of product lines and the safety of personnel. Standard operation procedures are followed under ISO9001 and BSCI. We insist on full inspection in and between every station and 100% burn-in test before shipment for comprehensive control of quality.

Lighting is not solely to brighten space up but has everything to do with emotions, health, and safety likewise, bringing opportunities of illumination to light. Reliable drivers and dimming technology is the base of a perfectly constructed smart lighting system. Advanced technology and customized services are what we are proud of ourselves. We are confident in foreseeing the market trend and creating valuable lighting solutions to our lifetime customers.

We boldly assume the future of lighting and make the most out of technology to drive your perspective to lights beyond imagination.



Built for the Future.

# Universal Wall Dimmer

Both self-developed IC and the MCU pick up and harness its advantages by cooperating with each other to benefit the most in terms of safety and dimming features. Our dimmers are controllable via leading and trailing edge mode, with the function of automatic detection on the load types. This function helps users to control using the most appropriate method. Automatic waveform correction is capable of filtering out all noises affecting the dimming performance, offering you the perfect lighting experience.

- Kaoyi ASIC and 8-core MCU Cooperation
- Leading and Trailing Edge Controllable
- Automatic Detection on Load Types
- High Load Type Compatibility with R,C,L loads
- Waveform Correction - No Buzzing Noise, No Flash
- Insertion Loss Compensation
- Min./Max. Brightness Adjustable
- Wide and Visual Linear Dimming
- Low Power Operation Down to 3W
- Soft Start
- Non-Neutral Wiring
- Self-recovered SCP, OTP, OLP
- CE Certified
- 5-year Warranty

## Specification

Standard	Model	Input	Dimming Mode	Rated Power				Min. Brightness Adjustment	Max. Brightness Adjustment	Leading Edge Switch	Dimming Way	Compliance
				LED	HV Halogen	LV Halogen	AC Motor					
EU	KUD-250EV	220V-240V	LE/TE	250VA	250W	250W	60W	V	X	X	1way/2way	CE
EU	KUD-450EV	220V-240V	LE/TE	450VA	450W	450W	100W	V	X	X	1way/2way	CE
EU	KUD-500EV	220V-240V	LE/TE	500VA	500W	500W	100W	V	X	X	1way/2way	CE
EU	KUD-250EV-L	220V-240V	LE/TE	250VA	250W	250W	60W	V	X	DIP Switch	1way/2way	CE
EU	KUD-450EV-L	220V-240V	LE/TE	450VA	450W	450W	100W	V	X	DIP Switch	1way/2way	CE
EU	KUD-500EV-L	220V-240V	LE/TE	500VA	500W	500W	100W	V	X	DIP Switch	1way/2way	CE
EU	KUD-250RV	220V-240V	LE/TE	250VA	250W	250W	60W	V	X	X	1way/2way	CE
EU	KUD-500RV	220V-240V	LE/TE	500VA	500W	500W	100W	V	X	X	1way/2way	CE
EU	KUD-265EE	220V-240V	LE/TE	265VA	265W	265W	60W	V	X	X	Multiple way	CE
EU	KUD-450EE	220V-240V	LE/TE	450VA	450W	450W	100W	V	X	X	Multiple way	CE
EU	KUD-265EE-L	220V-240V	LE/TE	265VA	265W	265W	60W	V	X	DIP Switch	Multiple way	CE
EU	KUD-450EE-L	220V-240V	LE/TE	450VA	450W	450W	100W	V	X	DIP Switch	Multiple way	CE
EU	KUD-450SV	220V-240V	LE/TE	450VA	450W	450W	100W	V	X	X	1way/2way	CE
EU	KUD-500SV	220V-240V	LE/TE	500VA	500W	500W	100W	V	X	X	1way/2way	CE
EU	KUD-100HV	220V-240V	LE/TE	100VA*2	100W*2	100W*2	50W*2	V	X	X	1way/2way	CE
EU	KUD-100HV-L	220V-240V	LE/TE	100VA*2	100W*2	100W*2	50W*2	V	X	DIP Switch	1way/2way	CE
UK	KUD-400BV	220V-240V	LE/TE	400VA	400W	400W	100W	V	X	X	1way/2way	CE
UK	KUD-400BV-L	220V-240V	LE/TE	400VA	400W	400W	100W	V	X	DIP Switch	1way/2way	CE

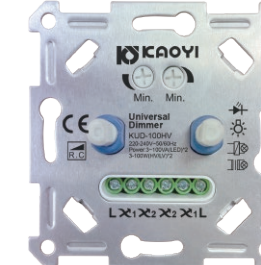
## EU Standard



KUD-250EV  
KUD-450EV  
KUD-500EV



KUD-250RV  
KUD-500RV



KUD-100HV



KUD-265EE  
KUD-450EE



KUD-250EV-L  
KUD-450EV-L  
KUD-500EV-L



KUD-450SV  
KUD-500SV



KUD-100HV-L



KUD-265EE-L  
KUD-450EE-L

## UK Standard



KUD-400BV



KUD-400BV-L



Versatile dimming, wide compatibility.

## Standard Wall Dimmer

This standard dimmer series comprises dimmers with a variety of functionalities including trailing or leading edge dimming mode selection for wide compatibility, minimum brightness and maximum brightness setting for best dimming performance.

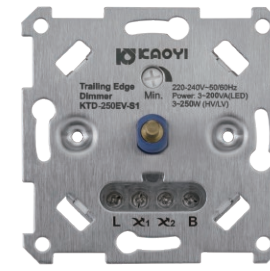
The dimmers offer superior patented digital dimming technology to deliver the best dimming performance. They are designed for use with dimmable LEDs but can also be used to control dimmable electronic transformers in leading edge mode. The encoder version allows wiring with multiple push switches for more convenience for users.

- Self-programmed 2-core MCU
- Leading and Trailing Edge Controllable
- High Load Type Compatibility with R,C loads
- Waveform Correction - No Buzzing Noise, No Flash
- Insertion Loss Compensation
- Min./Max. Brightness Adjustable
- Wide and Visual Linear Dimming
- Low Power Operation Down to 3W
- Soft Start
- Non-Neutral Wiring
- SCP, OTP, OLP
- CE Certified
- 5-year Warranty

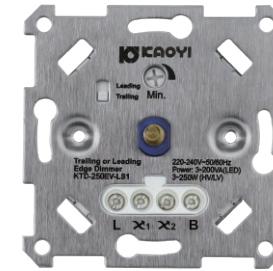
### Specification

Standard	Model	Input	Dimming Mode	Rated Power				Min. Brightness Adjustment	Max. Brightness Adjustment	Leading Edge Switch	Dimming Way	Compliance
				LED	HV Halogen	LV Halogen	AC Motor					
EU	KTD-250EV-S1	220V-240V	TE	200VA	250W	250W	X	V	X	X	1way/2way	CE
EU	KTD-400EV-S1	220V-240V	TE	350VA	400W	400W	X	V	X	X	1way/2way	CE
EU	KTD-250EV-LS1	220V-240V	TE/LE	200VA	250W	250W	X	V	X	DIP Switch	1way/2way	CE
EU	KTD-400EV-LS1	220V-240V	TE/LE	350VA	400W	400W	X	V	X	DIP Switch	1way/2way	CE
EU	KTD-250EV-FS1	220V-240V	TE	200VA	250W	250W	X	V	X	X	1way/2way	CE
EU	KTD-400EV-FS1	220V-240V	TE	350VA	400W	400W	X	V	X	X	1way/2way	CE
EU	KTD-250EV-LP1	220V-240V	TE/LE	200VA	250W	250W	X	V	X	DIP Switch	1way/2way	CE
EU	KTD-400EV-LP1	220V-240V	TE/LE	350VA	400W	400W	X	V	X	DIP Switch	1way/2way	CE
EU	KTD-250EE-S1	220V-240V	TE	200VA	250W	250W	X	V	X	X	Multiple way	CE
EU	KTD-400EE-S1	220V-240V	TE	350VA	400W	400W	X	V	X	X	Multiple way	CE
EU	KTD-250EE-LS1	220V-240V	TE/LE	200VA	250W	250W	X	V	X	DIP Switch	Multiple way	CE
EU	KTD-400EE-LS1	220V-240V	TE/LE	350VA	400W	400W	X	V	X	DIP Switch	Multiple way	CE
EU	KTD-250EE-LAS1	220V-240V	TE/LE	200VA	250W	250W	X	V	V	DIP Switch	Multiple way	CE
EU	KTD-400EE-LAS1	220V-240V	TE/LE	350VA	400W	400W	X	V	V	DIP Switch	Multiple way	CE
EU	KTD-100EV-S2	220V-240V	TE	100VA	100W	100W	X	V	X	X	1way/2way	CE
EU	KTD-250HE-LS1	220V-240V	TE/LE	200VA*2	250W*2	250W*2	X	V	X	DIP Switch	Multiple way	CE
AU	KDT-200IA-4	220V-240V	TE	200VA	200W	200W	X	V	X	X	1way	CB
AU	KDT-400IA-4	220V-240V	TE	400VA	400W	400W	X	V	X	X	1way	CB
AU	KDT-250IA-2	220V-240V	TE	250VA	250W	250W	X	V	X	X	1way	CB
AU	KDT-400IA-2	220V-240V	TE	400VA	400W	400W	X	V	X	X	1way	CB
UK	KTD-250BV-LAS1	220V-240V	TE/LE	200VA	250W	250W	X	V	V	DIP Switch	1way/2way	CE

### EU Standard



KTD-250EV-S1  
KTD-400EV-S1



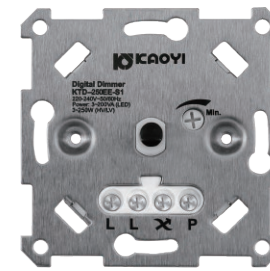
KTD-250EV-LS1  
KTD-400EV-LS1



KTD-250EV-FS1  
KTD-400EV-FS1



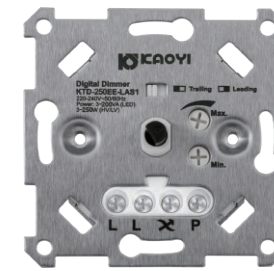
KTD-250EV-LP1  
KTD-400EV-LP1



KTD-250EE-S1  
KTD-400EE-S1



KTD-250EE-LS1  
KTD-400EE-LS1



KTD-250EE-LAS1  
KTD-400EE-LAS1



KTD-100EV-S2



KTD-250HE-LS1

### AU Standard



KDT-200IA-4  
KDT-400IA-4



KDT-250IA-2  
KDT-400IA-2



KTD-250BV-LAS1

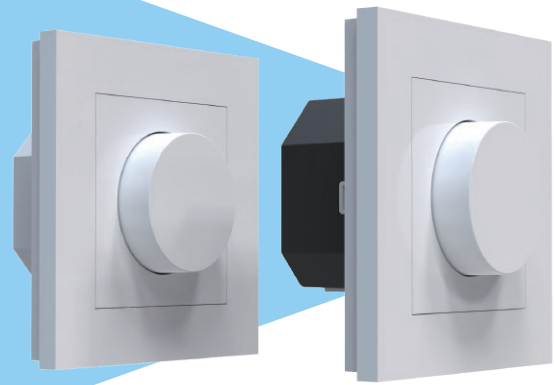
### UK Standard





Compact size, big power.

## Super Wall Dimmer



Loaded with advanced 8-core MCU and high capacity MOSFETs, this super dimmer series with maximum power reaching 800W or even 1000W is able to control much more luminaires in one way than normal dimmers, providing smooth, stable and reliable dimming performance. The dimmers are very suitable for larger spaces where big quantity and high power luminaires need to be dimmed at the same time, such as office, shop premises or schools. They are also suitable for household use to control long and high power LED strips or other luminaires. Various setting options and superior dimming technology ensure the best dimming experience.

- Kaoyi ASIC and 8-core MCU Cooperation
- Leading and Trailing Edge Controllable
- High Load Type Compatibility with R,C loads
- Waveform Correction - No Buzzing Noise, No Flash
- Insertion Loss Compensation
- Min./Max. Brightness Adjustable
- Low Power Operation Down to 3W (typical)
- Wide and Visual Linear Dimming
- Constant Power Correction at Max. Rated Power
- Soft Start
- Non-Neutral Wiring
- Self-recovered SCP, OTP, OLP
- CE Certified
- 5-year Warranty

### Specification

Standard	Model	Input	Dimming Mode	Rated Power				Min. Brightness Adjustment	Max. Brightness Adjustment	Leading Edge Switch	Dimming Way	Compliance
				LED	HV Halogen	LV Halogen	AC Motor					
EU	KTD-800EE-LS1	220V-240V	TE/LE	600VA	800W	800W	X	V	X	DIP Switch	Multiple way	CE
EU	KTD-850EE-LS1	220V-240V	TE/LE	650VA	850W	850W	X	V	X	DIP Switch	Multiple way	CE
EU	KTD-1000EE-LAS1	220V-240V	TE/LE	800VA	1000W	1000W	X	V	V	DIP Switch	Multiple way	CE
EU	KTE-1000EP-LAFS1	220V-240V	TE/LE	800VA	1000W	1000W	X	V	V	DIP Switch	Multiple way	CE

### EU Standard



KTD-800EE-LS1



KTD-850EE-LS1

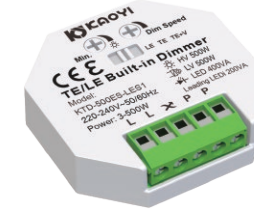


KTD-1000EE-LAS1

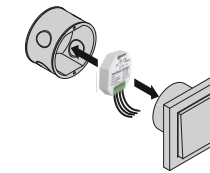


KTE-1000EP-LAFS1

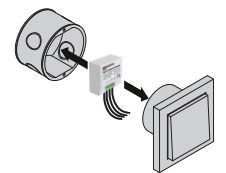
### EU Standard



KTD-250ES-LES1  
KTD-400ES-LES1  
KTD-500ES-LES1  
(Built-in, dimming speed adjustable)  
51.8x50.6x12.5mm



KTD-100ES-S1  
(Built-in)  
31.5x31.7x15.8mm



### Specification

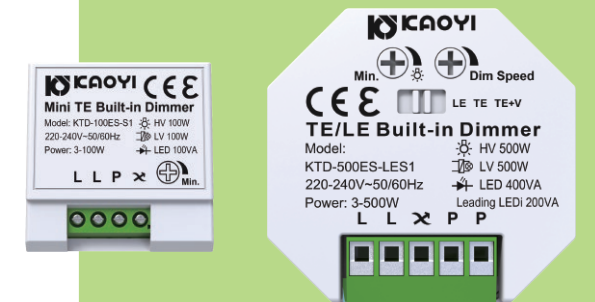
Standard	Model	Input	Dimming Mode	Rated Power				Min. Brightness Adjustment	Max. Brightness Adjustment	Leading Edge Switch	Dimming Way	Compliance
				LED	HV Halogen	LV Halogen	AC Motor					
EU	KTD-250ES-LES1	220V-240V	TE/LE	200VA	250W	250W	X	V	X	DIP Switch	With push switch	CE
EU	KTD-400ES-LES1	220V-240V	TE/LE	350VA	400W	400W	X	V	X	DIP Switch	With push switch	CE
EU	KTD-500ES-LES1	220V-240V	TE/LE	400VA	500W	500W	X	V	X	DIP Switch	With push switch	CE
EU	KTD-100ES-S1	220V-240V	TE	100VA	100W	100W	X	V	X	X	With push switch	CE

Tiny Module, Mighty Power

## Built-in Wall Dimmer

The very compact built-in dimmers can easily be installed in junction box and allows for smooth adjustment of the brightness via a button switch. With dimming modes of trailing and leading edge, the dimmers are suitable for all types of dimmable lighting including LED, high voltage halogen and low voltage halogen with electronic transformer of max. power from 100W to 500W. Furthermore the dimmer has function of dimming speed setting.

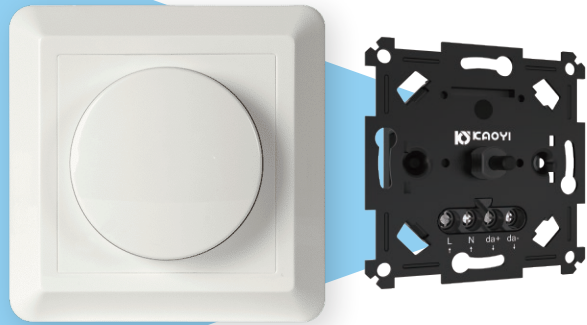
- Self-programmed 2-core MCU
- Leading and Trailing Edge Controllable
- High Load Type Compatibility with R,C Loads
- Waveform Correction - No Buzzing Noise, No Flash
- Insertion Loss Compensation
- Min. Brightness Adjustable
- Dimming Speed Adjustable
- Wide and Visual Linear Dimming
- Low Power Operation Down to 3W
- Soft Start
- Non-Neutral Wiring
- SCP, OTP, OLP
- CE Certified
- 5-year Warranty





2in1 design

## DALI-2 Dimmer



Kaoyi as a DALI member provides professional DALI products that are DALI-2 certified and full compatible with universal DALI systems. The rotary control DALI dimmers can support switching on/off and dimming commands for DT6 devices and color temperature adjusting for DT8 devices. It can be powered by AC mains or by DALI bus while not connected to AC mains. Each dimmer controls up to 37 connections through broadcast.

- DALI-2 Certified
- Work with DT6&DT8 System
- 2in1 Design
- Wide Dimming Range
- SCP / OLP / OTP
- CE Certified
- Applicable with Most Front Plates
- 5-year Warranty

### Specification

Standard	Model	Input	Dimming Mode	Load Type	Rated Power		Compliance
					Max. Load for LED Lighting Units	Min. Load for LED Lighting Units	
EU	KDD-37RE-CCTS1	220V-240V	DALI	DALI DT6/DT8 Drivers	37PCS	3PCS	CE

### EU Standard



KDD-37RE-CCTS1



### EU Standard



KTH-30EV-S2 (E27)  
Rotate to on/off/dim



KTH-30EV-S3 (E27+Adapter E27)  
Rotate to on/off/dim



KTH-30EP-S1 (E27)  
Pull to on/off/dim

### Specification

Standard	Model	Input	Dimming Mode	Rated Power			Type	Min. Brightness Adjustment	Max. Brightness Adjustment	Leading Edge Switch	Dimming Way	Compliance	Dimension (mm)
				LED	Incandescent	CFL							
EU	KTH-30EV-S2	100V-240V	TE	30W	30W	30W	E27	V	X	X	2-in 2-out	CE	62.5*37*73
EU	KTH-30EV-S3	100V-240V	TE	30W	30W	30W	E27	V	X	X	2-in 2-out	CE	62.5*37*92.5
EU	KTH-30EP-S1	100V-240V	TE	30W	30W	30W	E27	V	X	X	2-in 2-out	CE	42.5*37*73

Digital, Applicable with any Loads.

## Lamp Holder Dimmer

This series of lamp holder dimmers integrates the dimming circuit with the lamp holder structure, pioneering a new dimming method that features simple installation and smooth, precise dimming control. The product is suitable for table lamps, floor lamps, pendant lights, and more. Lighting manufacturers can incorporate it into their fixtures to provide customers with premium dimming options, while end-users can also easily DIY to upgrade their existing lamps with dimming functionality. The dimmers are highly compatible with various loads including dimmable LED such as LED bulb, LED filament and PAR lights, incandescent and CFL.

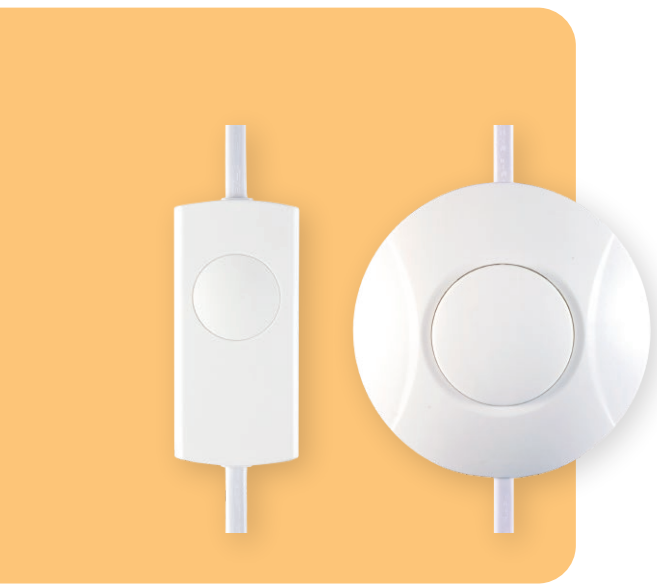
- Wide Input 100-240Vac, 50/60Hz
- MCU+MOS Digital Dimming
- High Compatibility
- Dimming Range 0-100%
- No Shimmering, No Flash
- No Noise
- 2-in and 2-out wiring
- No insertion loss
- OTP/SCP
- CE certified
- 5-year Warranty





Digital, Applicable with any Loads.

# Light Fixture Dimmer



Kaoyi light fixture dimmer series including inline/cord dimmer, foot dimmer and built-in dimmer are ideal for table lamps and floor lamps of AC or DC input. Thanks to the digital dimming circuit and low power activation down to even 0.5W, the dimmers are highly compatible with RC loads including low power LED filaments, providing silent, smooth, stable and optimal dimming performance so that you can enjoy your lighting the most.

There are a variety of designs and controlling ways for selection according to your wishes. Light fixtures can be even more compelling while connected to this series of dimmer with modern and elegant designs.

- Self-programmed Digital MCU
- Wide Load Compatibility
- Minimum Load Down to 0.5W
- AC-AC or AC-DC Selections
- 2-in and 2-out Wiring
- Soft Start
- SCP / OLP / OTP
- TUV/CE/UL/SAA Certified
- 5-year Warranty

## Specification

Standard	Model	Input	Dimming Mode	Rated Power				Min. Brightness Adjustment	Max. Brightness Adjustment	Leading Edge Switch	Dimming Way	Compliance	Dimension (mm)
				LED	HV Halogen	LV Halogen	AC Motor						
EU	KLD-100V	220V-240V	TE	100VA	100W	100W	X	V	X	X	2-in 2-out	TUV/CE	72*32.5*22
EU	KLD-100V2	220V-240V	TE	100VA	100W	100W	X	V	X	X	2-in 2-out	TUV/CE/CB/SAA	72*32.5*16.5
EU	KLD-100P	220V-240V	TE	100VA	100W	100W	X	X	X	X	2-in 2-out	TUV/CE	72*32.5*17.5
EU	KTL-100ER-LAS1	220V-240V	TE	100VA	100W	100W	X	V	V	V	2-in 2-out	CE	100*36*28.8
EU	KTL-100EP-LAS1	220V-240V	TE	100VA	100W	100W	X	V	V	V	2-in 2-out	CE	100*36*19.8
EU	KTL-100ER-S2	220V-240V	TE	100VA	100W	100W	X	V	X	X	2-in 2-out	CE	96*30.4*30.8
EU	KTL-100EP-LAS2	220V-240V	TE	100VA	100W	100W	X	V	V	V	2-in 2-out	CE	96*30.4*30.8
EU	KTL-100EP-S2	220V-240V	TE	100VA	100W	100W	X	V	X	X	2-in 2-out	CE	96*30.4*20
EU	KTL-100EP-LAS2	220V-240V	TE	100VA	100W	100W	X	V	V	V	2-in 2-out	CE	96*30.4*20
EU	KTL-100ER-S1	220V-240V	TE	100VA	100W	100W	X	X	X	X	2-in 2-out	CE	78*35.5*34
EU	KTL-100EV-S1	220V-240V	TE	100VA	100W	100W	X	X	X	X	2-in 2-out	CE	77*32*18.5
EU	KTL-100EV-LS1	220V-240V	TE	100VA	100W	100W	X	V	X	V	2-in 2-out	CE	77*32*18.5
EU	KTL-24ER-S1	220V-240V	TE	24W(output 2A*12V)	X	24W	X	X	X	X	2-in 2-out	CE	115*41*37.6
EU	KTL-24EP-S1	220V-240V	TE	24W(output 2A*12V)	X	24W	X	X	X	X	2-in 2-out	CE	115*41*27
EU	KFD-100P	220V-240V	TE	100VA	100W	100W	X	X	X	X	2-in 2-out	TUV/CE	80*80*20.7
EU	KFD-100V	220V-240V	TE	100VA	100W	100W	X	V	X	X	2-in 2-out	TUV/CE/CB/SAA	100*50*24.7
EU	KFD-100P2	220V-240V	TE	100VA	100W	100W	X	V	X	X	2-in 2-out	CE	100*50*17.8
EU	KTF-36EV-S1	220V-240V	TE	36W(output 3A*12V)	X	36W	X	X	X	X	2-in 2-out	CE	100*65*32
EU	KLD-60EV	220V-240V	TE	60VA	60W	60W	X	X	X	X	2-in 2-out	TUV/CE	42.3*20.6*25.7
EU	KTB-60EV-W1	220V-240V	TE	60VA	60W	60W	X	V	X	X	2-in 2-out	CE	60.8*18*34.6
UL	KLD-100UV	100V-120V	TE	100VA	100W	100W	X	V	X	X	2-in 2-out	UL	72*32.5*25.3
UL	KFD-100V	100V-120V	TE	100VA	100W	100W	X	V	X	X	2-in 2-out	UL	100*50*24.7
UL	KLD-60UV	100V-120V	TE	60VA	60W	60W	X	X	X	X	2-in 2-out	UL	42.3*20.6*25.7

## EU Standard



### Inline



### Foot



### Built-in

## US Standard



### Inline

### Foot

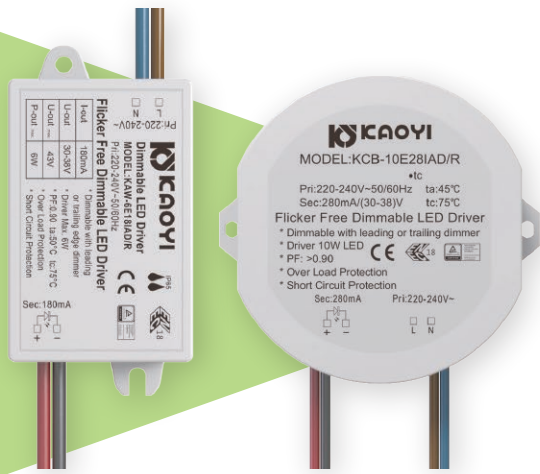
### Built-in





0-100% dimmable.  
No flicker, no flash.

# Dimmable Constant Current Driver Flicker Free



Multiple dimming compensation circuits within allows this series of drivers to possess high dimming compatibility regardless of the various brands of dimmer switches. By integrating our flicker-free technology into our products to keep flicker percentage below 3% at all dimming range, an even healthier lighting is provided complying with all flicker-free standards worldwide.

- Flicker-Free
- Dimmable With Leading or Trailing Edge Dimmer
- Synchronous Dimming
- Synchronous Start
- Soft Start
- Deep Dimming Compensation
- No Shimmering at Low Brightness
- Isolated Structure
- Multiple Protections, OLP/OVP/SCP
- TUV/ENEC/CE/UL Certified
- 5-year Warranty

## Specification

Model	Output Power (Max.)	Input Voltage	Output Voltage	Output Current	Efficiency	Power Factor	IP Rating	Flicker-Percentage	Compliance	Dimension (mm)
KAW-6E18IAD/R	6.8W	220-240V	30-38V	180mA	75%	>0.9	IP65	<3%	TUV/CE/ENEC	63*32*17
KAW-6E35IAD/R	6.3W	220-240V	12-18V	350mA	72%	>0.9	IP65	<3%	TUV/CE/ENEC	63*32*17
KAW-10E28IAD/R	10W	220-240V	30-38V	280mA	80%	>0.9	IP65	<3%	TUV/CE/ENEC	82*32*24.5
KAW-12E35IAD/R	12W	220-240V	30-38V	350mA	81%	>0.9	IP65	<3%	TUV/CE/ENEC	82*32*24.5
KAW-18E50ITD/R	18W	220-240V	30-38V	500mA	83%	>0.9	IP65	<3%	TUV/CE/ENEC	82*32*24.5
KAW-24E70ITD/R	24W	220-240V	30-38V	700mA	85%	>0.9	IP65	<3%	TUV/CE/ENEC	82*32*24.5
KCB-10E28IAD/R	10W	220-240V	30-38V	280mA	80%	>0.9	IP65	<3%	TUV/CE/ENEC	62.4*56.5*24
KCB-12E35IAD/R	12W	220-240V	30-38V	350mA	81%	>0.9	IP65	<3%	TUV/CE/ENEC	62.4*56.5*24
KCB-22E60ITD/R	22W	220-240V	30-38V	600mA	83%	>0.9	IP65	<3%	TUV/CE/ENEC	62.4*56.5*24
KCB-24E70ITD/R	24W	220-240V	30-38V	700mA	85%	>0.9	IP65	<3%	TUV/CE/ENEC	62.4*56.5*24
KAA-12E35IAD-SWR	12W	220-240V	30-38V	180/250/280/350mA	81%	>0.9	IP20	<3%	TUV/CE	115.2*41*23
KAA-50E40VTD-F	50W	220-240V	40V	950/1050/1150/1250mA	88%	>0.9	IP20	<3%	CE	150*53.5*28
KAA-42E40VTD-F	42W	220-240V	40V	750/850/950/1050mA	88%	>0.9	IP20	<3%	CE	150*53.5*28
KAA-32E40VTD-F	32W	220-240V	40V	500/600/700/800mA	88%	>0.9	IP20	<3%	CE	150*53.5*28
KAI-38E55ITD/SWR	38W	220-240V	72V	350/450/550mA	88%	>0.9	IP20	<3%	CE	120*40*28
KAW-8U18IAD/R	7.6W	100-120V	30-42V	180mA	75%	>0.9	IP65	<3%	UL/FCC	63*32*17
KAW-8U35IAD/R	7.7W	100-120V	12-22V	350mA	73%	>0.9	IP65	<3%	UL/FCC	63*32*17
KAW-12U28IAD/R	11.8W	100-120V	30-42V	280mA	83%	>0.9	IP65	<3%	UL/FCC	82.3*32*24.5
KAW-15U35IAD/R	14.7W	100-120V	30-42V	350mA	83%	>0.9	IP65	<3%	UL/FCC	82.3*32*24.5
KAW-17U40IAD/R	16.8W	100-120V	30-42V	400mA	84%	>0.9	IP65	<3%	UL/FCC	82.3*32*24.5
KAW-11U50IAD/R	11W	100-120V	12-22V	500mA	84%	>0.9	IP65	<3%	UL/FCC	81.4*41.3*25.5
KAW-15U70IAD/R	15.4W	100-120V	12-22V	700mA	79%	>0.9	IP65	<3%	UL/FCC	81.4*41.3*25.5
KAW-21U50IAD/R	21W	100-120V	30-42V	500mA	80%	>0.9	IP65	<3%	UL/FCC	81.4*41.3*25.5

## EU Standard 220-240V C.C



KAW-6E18IAD/R  
KAW-6E35IAD/R



KAW-10E28IAD/R  
KAW-12E35IAD/R  
KAW-18E50ITD/R  
KAW-24E70ITD/R



KCB-10E28IAD/R  
KCB-12E35IAD/R  
KCB-22E60ITD/R  
KCB-24E70ITD/R



KAA-12E35IAD-SWR



KAA-50E40VTD-F  
KAA-42E40VTD-F  
KAA-32E40VTD-F



For panel lights



KAI-38E55ITD/SWR

## US Standard 100-120V C.C



KAW-8U18IAD/R  
KAW-8U35IAD/R



KAW-12U28IAD/R  
KAW-15U35IAD/R  
KAW-17U40IAD/R



KAW-11U50IAD/R  
KAW-15U70IAD/R  
KAW-21U50IAD/R

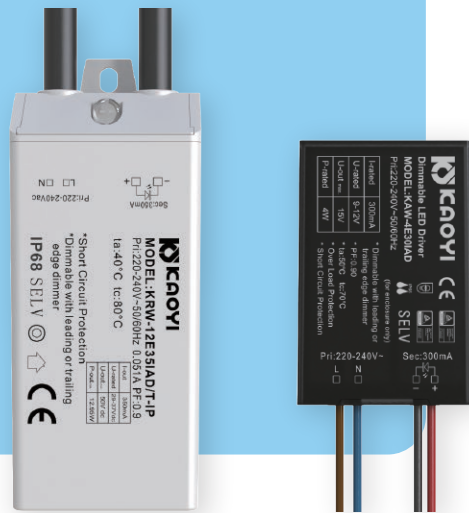


Waterproof.  
Works Everywhere.

# Dimmable Constant Current Driver Waterproof

Multiple dimming compensation circuits within allows this series of drivers to possess high dimming compatibility regardless of the various brands of dimmer switches. This waterproof series drivers including constant current or constant voltage models with IP65 or IP68 rating level allows both indoor or outdoor use, offering the best lighting experience.

- IP65/IP68
- Dimmable With Leading or Trailing Edge Dimmer
- Soft Start
- Deep Dimming Compensation
- No Shimmering at Low Brightness
- Isolated Structure
- Multiple Protections, OLP/OVP/SCP
- TUV/CE Certified
- 5-year Warranty



## Specification

Model	Output Power (Max.)	Input Voltage	Output Voltage	Output Current	Efficiency	Power Factor	IP Rating	Flicker-Percentage	Compliance	Dimension (mm)
KAW-4E30IAD	4W	220-240V	9-12V	300mA	70%	>0.9	IP65	<3%	TUV/CE	43.6*28.5*15.5
KAW-4E35IAD	4W	220-240V	9-12V	350mA	70%	>0.9	IP65	<3%	TUV/CE	43.6*28.5*15.5
KAW-6E16IAD	6W	220-240V	30-38V	160mA	75%	>0.9	IP65	<3%	TUV/CE	43.6*28.5*15.5
KAW-6E30IAD	6W	220-240V	13-20V	300mA	75%	>0.9	IP65	<3%	TUV/CE	43.6*28.5*15.5
KRL-6E16IAD/T	6W	220-240V	30-38V	160mA	70%	>0.9	IP65		TUV/CE	63*32*17
KRL-12E35IAD/T	12W	220-240V	30-38V	350mA	83%	>0.9	IP65		TUV/CE	75*32*22.5
KRL-20E54IAD/T	20W	220-240V	30-38V	540mA	85%	>0.9	IP65		TUV/CE	75*32*22.5
KRL-24E70IAD/T	24W	220-240V	30-38V	700mA	86%	>0.9	IP65		TUV/CE	75*32*22.5
KRL-36E1AIAD/T-1	36W	220-240V	30-38V	1000mA	87%	>0.9	IP65		TUV/CE	97.4*40.6*29.4
KRW-12E35IAD/T-IP	12W	220-240V	30-38V	350mA	83%	>0.9	IP68		TUV/CE	79.5*32.8*25.5
KRW-20E54IAD/T-IP	20W	220-240V	30-38V	540mA	85%	>0.9	IP68		TUV/CE	79.5*32.8*25.5
KRW-24E70IAD/T-IP	24W	220-240V	30-38V	700mA	86%	>0.9	IP68		TUV/CE	79.5*32.8*25.5
KRW-30E50IAD/T-IP	30W	220-240V	30-38V	500mA	87%	>0.9	IP68		TUV/CE	86*33*28.5
KRW-36E1AIAD/T-IP	36W	220-240V	30-38V	1000mA	87%	>0.9	IP68		TUV/CE	86*33*28.5

EU Standard 220-240V C.C

IP65 SELV CE



KAW-4E30IAD  
KAW-4E35IAD  
KAW-6E16IAD  
KAW-6E30IAD



KRL-6E16IAD/T



KRL-12E35IAD/T  
KRL-20E54IAD/T  
KRL-24E70IAD/T



KRL-36E1AIAD/T-1

EU Standard 220-240V C.C

IP68 SELV CE



KRW-12E35IAD/T-IP  
KRW-20E54IAD/T-IP  
KRW-24E70IAD/T-IP

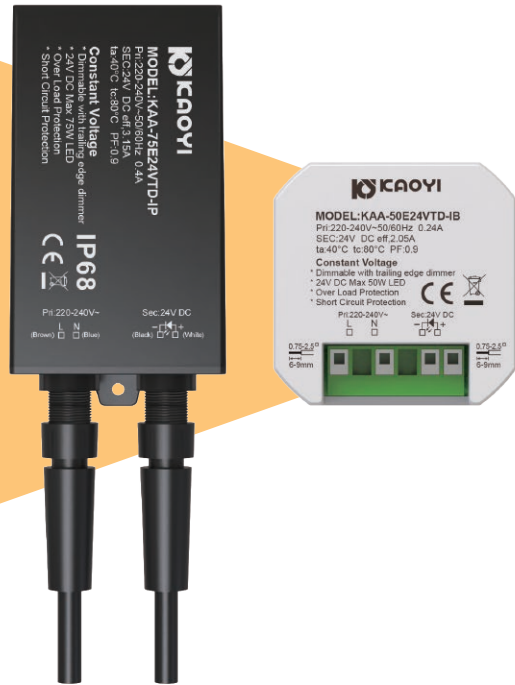


KRW-30E50IAD/T-IP  
KRW-36E1AIAD/T-IP



Dimmable,  
Stable and safe.

# Dimmable Constant Voltage Driver



This dimmable constant voltage driver series is ideal for connecting 12V/24V/48V LED strips or spotlights. Professional dimming circuit and isolated structure inside ensure a safe and stable dimming performance. With a dimmer connected, you can switch the lamps on/off or dim it to the suitable brightness as you like. IP68 rated models suitable for outdoor use are available.

- IP20/IP68 Available
- Dimmable With Leading or Trailing Edge Dimmer
- Soft Start
- Deep Dimming Compensation
- No Shimmering at Low Brightness
- Isolated Structure
- Multiple Protections, OLP/OVP/SCP
- CE Certified
- 5-year Warranty

## Specification

Model	Output Power (Max.)	Input Voltage	Output Voltage	Output Current	Efficiency	Power Factor	IP Rating	Flicker-Percentage	Compliance	Dimension (mm)
KSB-25E12VAD	25W	220-240V	12V	2.08A	82%	>0.9	IP20		CE	108*43*30
KAA-50E24VTD-F	10-50W	220-240V	24V	1.9A	90%	>0.9	IP20		CE	150*53.5*28
KAA-50E24VTD-IB	10-50W	220-240V	24V	2.05A	90%	>0.9	IP20		CE	53.5*53.5*28
KAA-50E24VTD-IP	10-50W	220-240V	24V	2.05A	90%	>0.9	IP68		CE	68*55*29
KAA-75E24VTD-IP	10-75W	220-240V	24V	3.15A	90%	>0.9	IP68		CE	108*57*30
KAA-25E24VPD-IB	10-25W	220-240V	24V	1.05A	90%	>0.9	IP20		CE	53.5*53.5*28
KAA-50E24VPD-IB	10-50W	220-240V	24V	2.05A	90%	>0.9	IP20		CE	53.5*53.5*28
KAA-25E48VPD-IB	10-25W	220-240V	48V	0.53A	88%	>0.9	IP20		CE	53.5*53.5*28
KAA-50E48VPD-IB	10-50W	220-240V	48V	1.05A	88%	>0.9	IP20		CE	53.5*53.5*28

EU Standard 220-240V C.V 12V



KSB-25E12VAD

EU Standard 220-240V C.V 24V/48V



KAA-50E24VTD-F



KAA-50E24VTD-IB



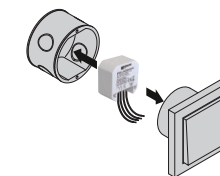
KAA-50E24VTD-IP



KAA-75E24VTD-IP



KAA-25E24VPD-IB  
KAA-50E24VPD-IB  
KAA-25E48VPD-IB  
KAA-50E48VPD-IB





Mini Size.

# Non-Dimmable Constant Current Driver Flicker Free

This selection is equipped with 8 steps of output current options, with 50mA per step for a wide variety of usage. These mini-sized drivers have large flexibility to fit in various kinds of lights. With efficiency no lower than 87%, our drivers achieve extraordinary performance with flicker-free technology enabling customers to not only choose by preferences but also to take eye protection into account for better lighting experiences.

- Flicker-Free
- Compact Size
- 8 Output Current Options Available
- High Efficiency
- Isolated Structure
- Multiple Protections, OLP/OVP/SCP
- TUV/CE/ENEC Certified
- 5-year Warranty



## Specification

Model	Output Power (Max.)	Input Voltage	Output Voltage	Output Current	Efficiency	Power Factor	IP Rating	Flicker-Percentage	Compliance	Dimension (mm)
KRP-17E45ISW-A	17.1W	220-240V	30-38V	275-450mA(25mA per step)	85%	>0.7	IP20	<3%	TUV/CE/ENEC	54.5*54.2*22.5
KRP-30E80ISW-A	30.4W	220-240V	30-38V	450-800mA(50mA per step)	89%	>0.8	IP20	<3%	TUV/CE/ENEC	54.5*54.2*22.5
KSP-17E45ISW-A	17.1W	220-240V	30-38V	275-450mA(25mA per step)	88%	>0.7	IP20	<3%	TUV/CE/ENEC	74*43.8*23
KSP-30E80ISW-A	30.4W	220-240V	30-38V	450-800mA(50mA per step)	89%	>0.8	IP20	<3%	TUV/CE/ENEC	74*43.8*23
KSP-17E45ISW-B	17.1W	220-240V	30-38V	275-450mA(25mA per step)	87%	>0.7	IP20	<3%	TUV/CE/ENEC	74*33*18.7
KSP-30E80ISW-B	30.4W	220-240V	30-38V	450-800mA(50mA per step)	89%	>0.8	IP20	<3%	TUV/CE/ENEC	95*33*18.7
KSP-40E105ISW-B	40W	220-240V	30-38V	900-1050mA(50mA per step)	89%	>0.9	IP20	<3%	TUV/CE/ENEC	121*33.5*21
KSP-17E45ISW-B+SR	17.1W	220-240V	30-38V	275-450mA(25mA per step)	87%	>0.7	IP20	<3%	TUV/CE/ENEC	79*35*21.4
KSP-30E80ISW-B+SR	30.4W	220-240V	30-38V	450-800mA(50mA per step)	89%	>0.8	IP20	<3%	TUV/CE/ENEC	100*35*21.7
KSP-40E105ISW-B+SR	40W	220-240V	30-38V	900-1050mA(50mA per step)	89%	>0.9	IP20	<3%	TUV/CE/ENEC	127.2*35.5*25.2
KSP-17E45ISW-T	17.1W	220-240V	30-38V	275-450mA(25mA per step)	87%	>0.7	IP20	<3%	TUV/CE/ENEC	103*36.6*55.2
KSP-30E80ISW-T	30.4W	220-240V	30-38V	450-800mA(50mA per step)	88%	>0.8	IP20	<3%	TUV/CE/ENEC	123*36.3*55.2
KSP-40E105ISW-T	40W	220-240V	30-38V	900-1050mA(50mA per step)	89%	>0.9	IP20	<3%	TUV/CE/ENEC	149*36.3*53.5
KRP-27E70ISW-T-4	27W	220-240V	30-38V	400-700mA(100mA per step)	88%	>0.98	IP20	<3%	TUV/CE/ENEC	φ57*70.5

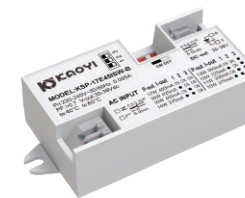
## Built-in



KRP-17E45ISW-A  
KRP-30E80ISW-A



KSP-17E45ISW-A  
KSP-30E80ISW-A



KSP-17E45ISW-B



KSP-30E80ISW-B



KSP-40E105ISW-B



KSP-17E45ISW-B+SR



KSP-30E80ISW-B+SR



KSP-40E105ISW-B+SR

## In-track



KSP-17E45ISW-T



KSP-30E80ISW-T

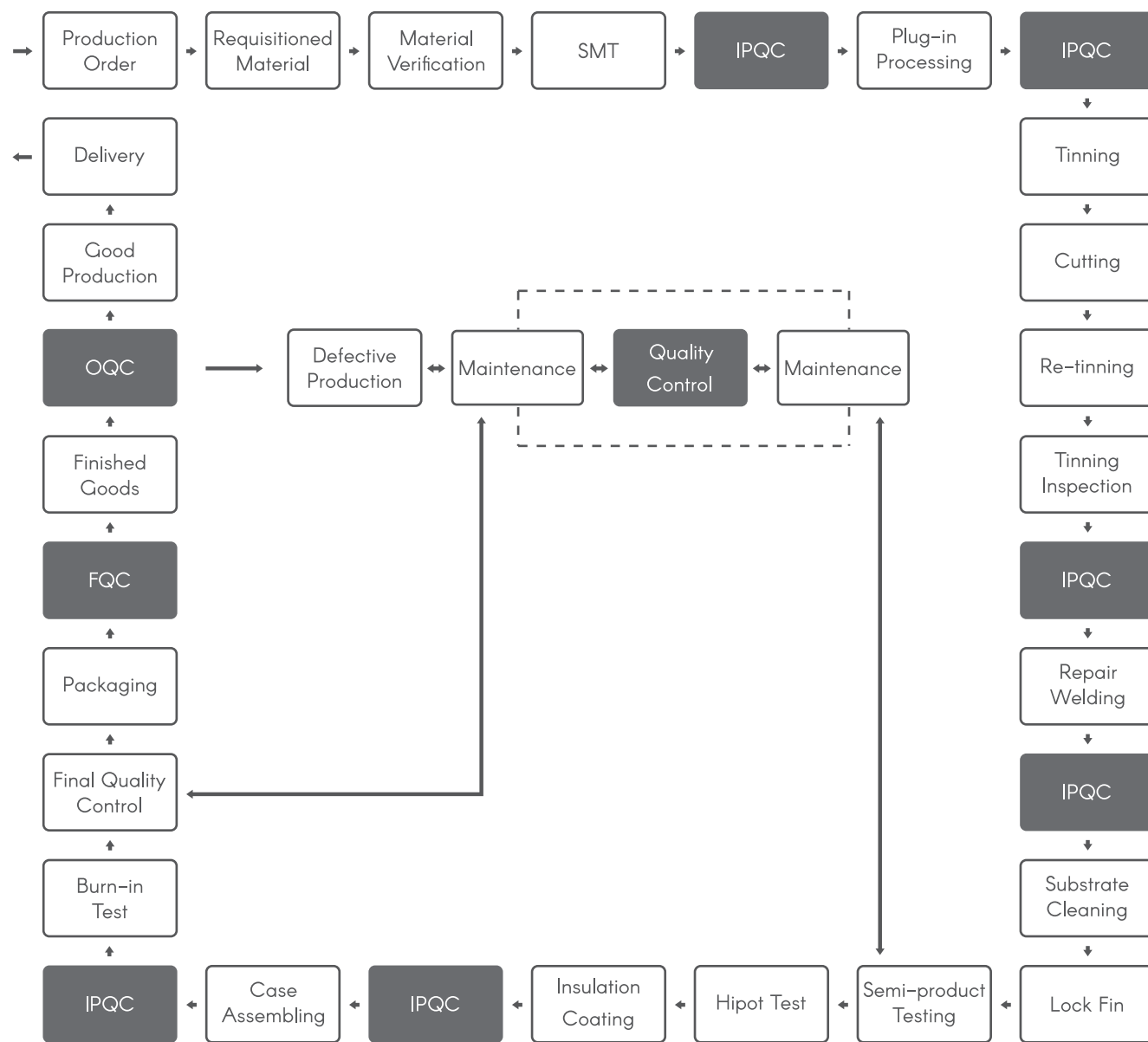


KSP-40E105ISW-T



KRP-27E70ISW-T-4

# Quality Control Process



# KAOYI LIGHTING



## contact us

Email: [sales@kaoyi.com](mailto:sales@kaoyi.com)

### Kaoyi Electronic Co., Ltd. Headquarter in Taiwan.

Tel: 886(O)4-7365539

Fax: 886(O)4-7369740

Add: No.241, Sec 1, Meiliao Road, Homei Town, Changhua County,  
Taiwan, China

Postcode: 508

### Xiamen Kaotec Electronic Technologic Co., Ltd.

Tel: 86(O)592-5688618 / 86(O)592-5622999

Fax: 86(O)592-5688658 / 86(O)592-5688789

Add: No.66, Gaoqi North 2nd Road,  
Fujian Pilot Free Trade Zone, Xiamen, China

Postcode: 361006

---

### Zhangzhou Kaotec Electronic Technologic Co., Ltd.

Tel: 86(O)596-6016999

Fax: 86(O)596-6016008

Add: No. 2, Cailong Avenue, Yunling Industrial Development Zone,  
Yunxiao County, Zhangzhou City, Fujian, China

Postcode: 363300

### Zhangzhou Kaosun Electronic Technologic Co., Ltd.

Tel: 86(O)596-8312799

Fax: 86(O)596-8312799

Add: Guanshan Industrial Park, Wu'an Town,  
Changtai County, Zhangzhou City, Fujian, China

Postcode: 363900



Catalogue



[www.kaoyi.com](http://www.kaoyi.com)