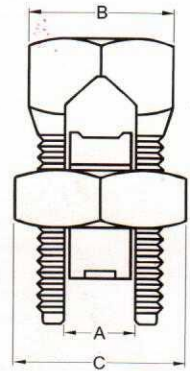
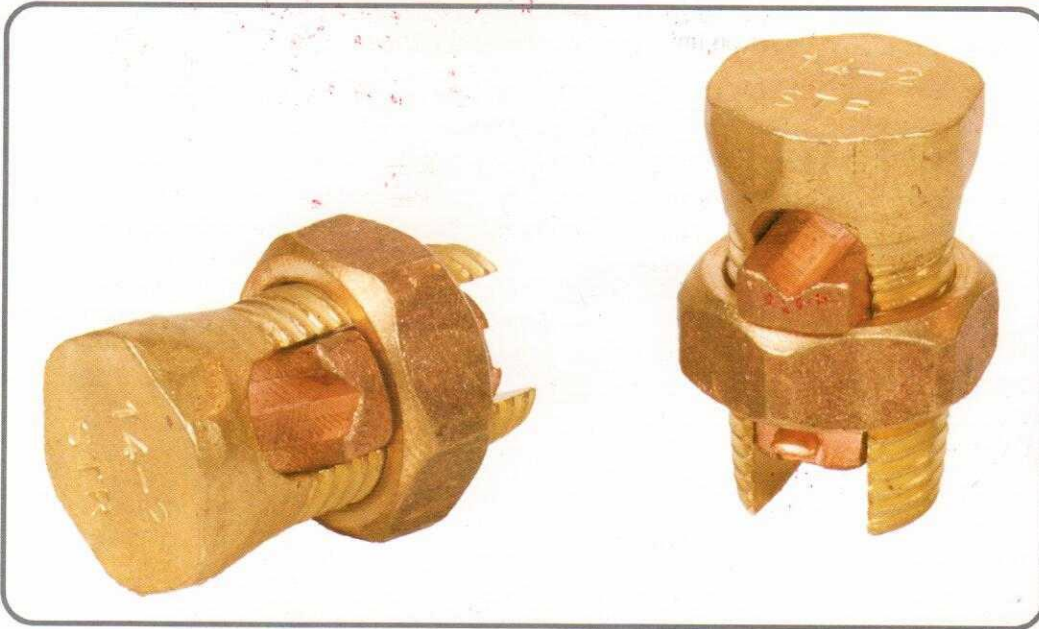


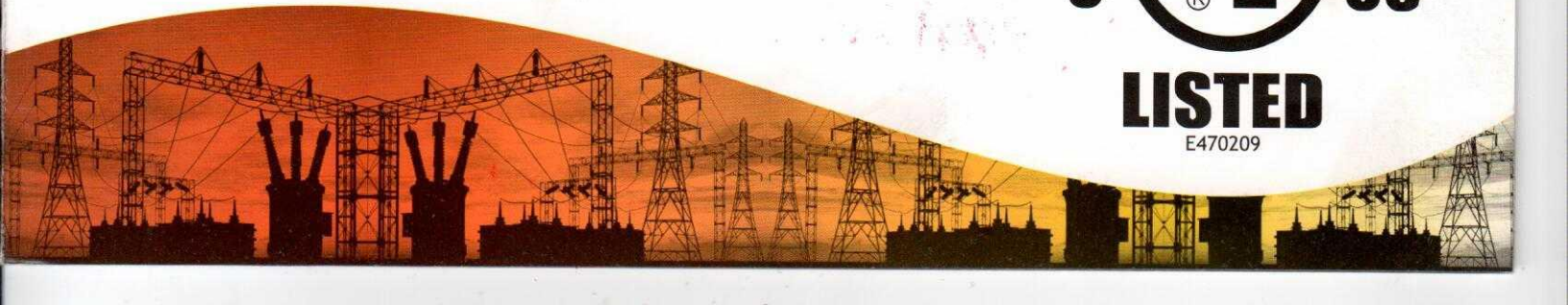
UL APPROVED SPLIT BOLT CONNECTORS

SPLIT BOLT CONNECTORS



Sr. No.	Catalog Number	Copper Conductor			Wire Diameter Range	Approx Dimension in Inches			Torque
		Rang of Equal Main & Tap		Main Tap with One		A	B	C	
		Min.	Max.	Max. Mim.					
1	EMP 01	16 STR	8 STR	16 STR	0.57 - 0.445	0.145	3/8"	1/2"	7.3 Nm
2	EMP 02	10 SOL	6 SOL	16 SOL	0.102 - 0.102	0.165	7/15"	5/8"	15.3 Nm
3	EMP 03	8 SOL	4 STR	16 SOL	0.128 - 0.204	0.215	1/2"	11/16"	15.3 Nm
4	EMP 04	2 STR	2 STR	14 SOL	0.162 - 0.292	0.328	5/8"	13/16"	25 Nm
5	EMP 05	4 STR	1/O STR	14 SOL	0.204 - 0.324	0.381	1/16"	15/16"	35 Nm
6	EMP 06	2 SOL	2/O STR	14 SOL	0.257 - 0.364	0.440	3/4"	1"	35 Nm
7	EMP 07	2 SOL	3/O STR	12 SOL	0.324 - 0.408	0.472	7/8"	1-1/8"	45 Nm
8	EMP 08	1/O STR	250 MM	10 SOL	0.46	0.590	1"	1-3/16"	62 Nm

c **UL** [®] US
LISTED
E470209



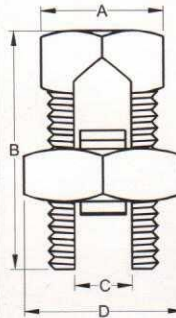
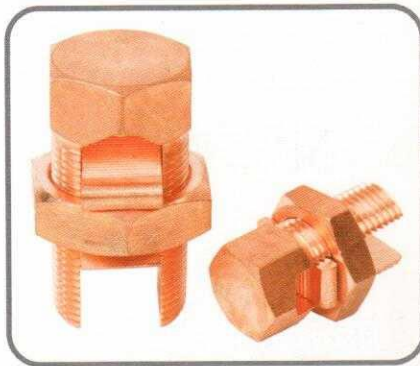
SPLIT BOLT CONNECTORS

Split bolt is very handy component used in various equipment like industrial, electrical and even electronic equipment. The multifaceted utility of the split bolt depends up on the high quality material used and the precision adopted in the manufacturing process. Split bolts are widely used to firmly hold any tiny object between the split to have a precision in its operation whether electrical or industrial.

We meet all the technical and quality control to deliver the best split bolts by using thorough processing and testing of the split bolts before it reaches the customer or the user. We use a very high quality of material to strengthen the life of the split bolts in all respects.

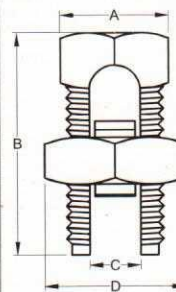
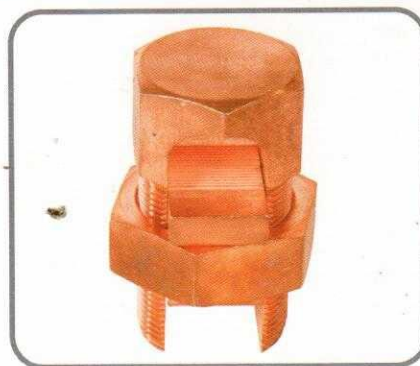
We manufacture custom made split bolts apart from our regular sized and commonly used. To cater the various needs of the customers we turn their ideas in the finished split bolts with 100% precision and guarantee.

MIDDLE EAST & EUROPE STANDARD

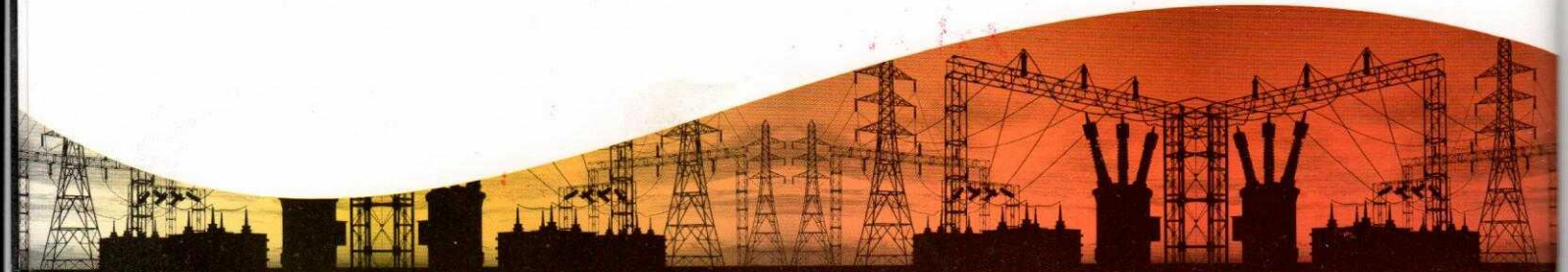


Size	Product Code	A (Bolt) A/F	B	C	D (Nut) A/F
6MM2	ESBC-6	10.00	24.00	3.20	12.70
10MM2	ESBC-10	12.70	27.30	5.50	19.00
16MM2	ESBC-16	12.70	24.30	5.50	19.00
25MM2	ESBC-25	15.00	28.90	6.90	19.00
35MM2	ESBC-35	18.00	34.80	8.10	24.00
50MM2	ESBC-50	23.00	42.00	9.60	27.30
70MM2	ESBC-70	23.00	47.50	11.17	30.00
95MM2	ESBC-95	25.40	53.00	14.00	34.30
120MM2	ESBC-120	30.00	59.00	16.00	35.55
150MM2	ESBC-150	30.00	59.00	16.00	35.55
185MM2	ESBC-185	32.00	59.00	18.00	38.10
240MM2	ESBC-240	39.00	76.20	22.20	48.25
300MM2	ESBC-300	43.00	76.20	23.00	52.45

AMERICAN STANDARD

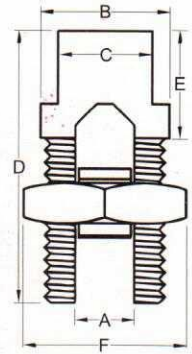
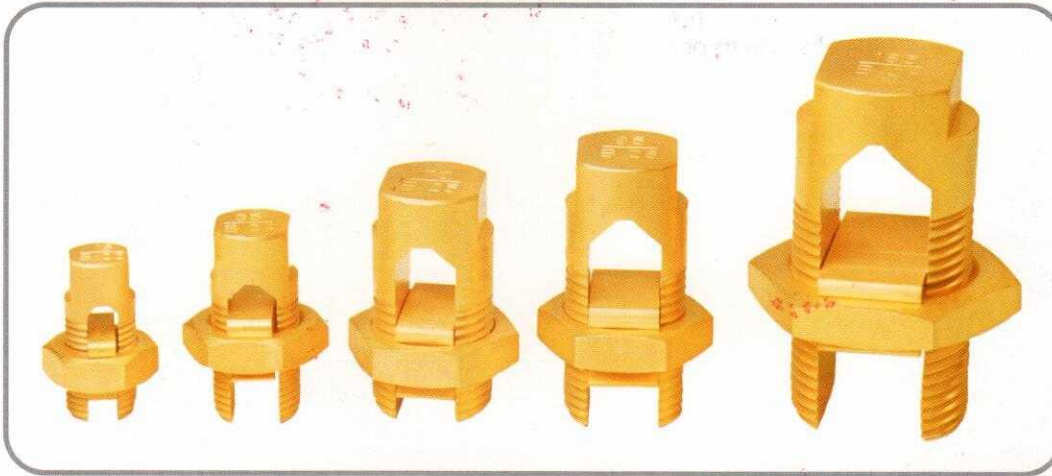


Marking on Head	Product Code	A (Bolt) A/F	B	C	D (Nut) A/F
10STR-16STR	EA-90	9.50	24.00	3.20	12.70
8STR-12STR	EA-15	9.50	24.00	3.70	12.70
6SOL-10SOL	EA-17	11.00	27.50	4.30	17.00
4SOL-8SOL	EA-20	12.70	34.00	5.50	18.20
2SOL-6SOL	EA-22	15.85	42.00	7.00	21.75
2STR-6SOL	EA-23	15.85	42.00	7.00	21.75
1/0STR-4SOL	EA-25	17.50	46.50	9.70	23.00
2/0STR-2SOL	EA-26	19.00	49.00	11.00	25.50
3/0STR-2SOL	EA-27	22.20	53.50	12.00	28.25
250MCM-1/0SOL	EA-29	25.40	61.00	15.00	30.00
350MCM-4/0SOL	EA-31	30.00	68.50	18.00	34.20
500MCM-250MCM	EA-34	35.50	76.00	21.50	42.50
750MCM-4/0STR	EA-39	44.50	94.00	26.50	54.00
1000MCM-4/0STR	EA-44	53.00	100.00	31.50	64.50



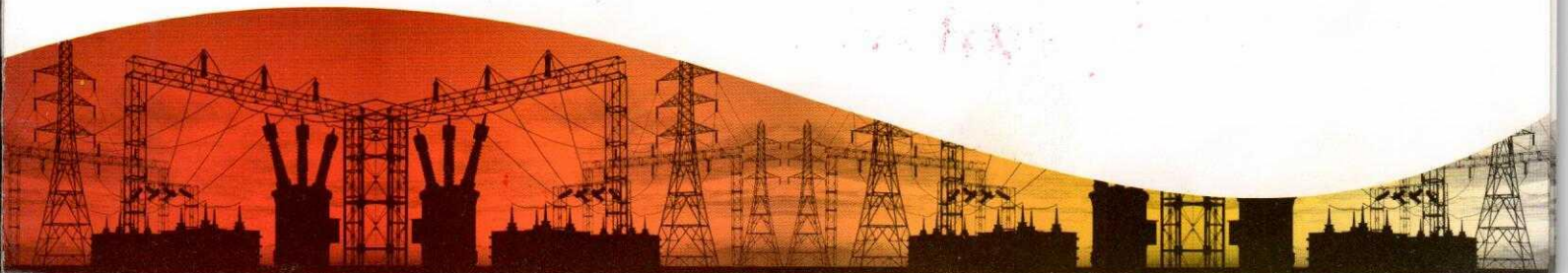
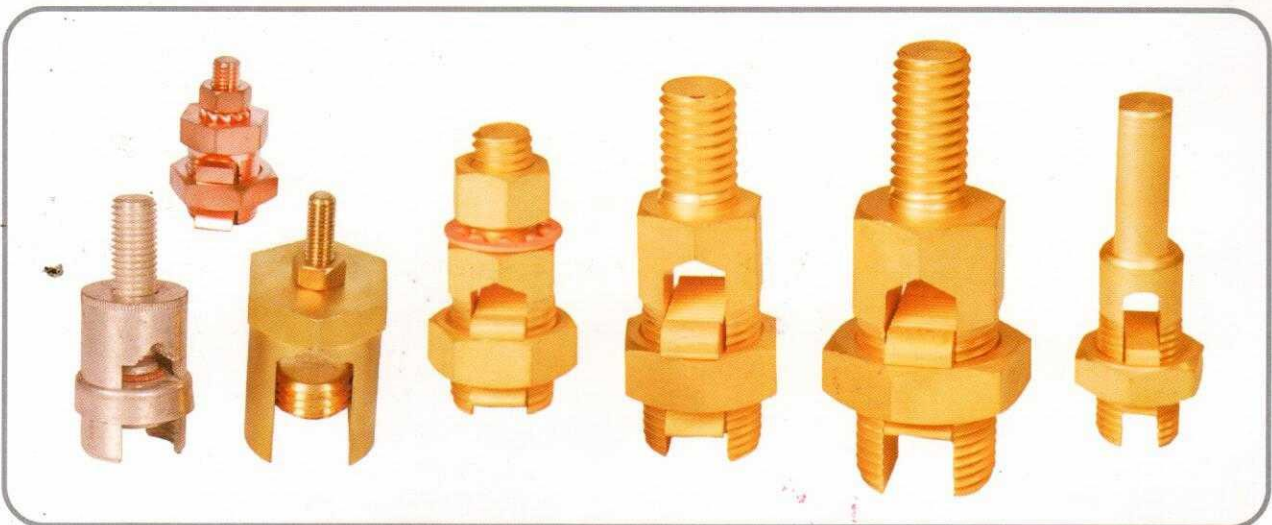
SPLIT BOLT CONNECTORS

AUSTRALIAN STANDARD



Maximum Conductor Size	Product Code	Dimensions in mm (except B which is in inches)					
		A	B	C	D	E	F
16	EAR-16	5.30	1/2"	10.40	30.20	11.10	17.90
35	EAR-35	8.30	5/8"	13.20	36.50	14.30	23.20
70	EAR-70	10.90	7/8"	17.90	44.50	22.20	27.70
95	EAR-95	12.90	7/8"	17.90	50.80	22.20	27.70
120	EAR-120	15.00	1"	17.90	53.00	22.20	35.50
185	EAR-185	18.50	1.25"	23.20	66.70	25.40	42.10

EXTRA STUD & EXTRA PRESSURE PADS, SPLIT BOLT CONNECTORS / SERVICE POST CONNECTORS



EARTHING EQUIPMENT

SQUARE TAPE CLAMP (CROSS SADDLE)



Conductor Size (MM)	Product Code
25 X 3	ESTC-253
25 X 4	ESTC-254
25 X 8	ESTC-256
50 X 6	ESTC-506

DC TAPE CLIP



Conductor Size (MM)	Product Code
25 X 3	ESTC-253
25 X 4	ESTC-254
32 X 3	ESTC-323
25 X 6	ESTC-256
50 X 6	ESTC-506

OBLONG TEST CLAMP



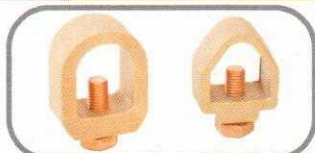
Conductor Size (MM)	Product Code
25 X 3	EOTC-253
40 X 6	EOTC-406
50 X 6	EOTC-506

ROD TO CABLE LUG CLAMP



Rod Size Inch	MM	Product Code
3/8"	9.5	ERTCLC-3/8"
5/8"	16.00	ERTCLC-5/8"
3/4"	20.00	ERTCLC-3/4"

ROD TO TAPE CLAMP



Conductor Size (MM)	Product Code
26 X 12	ERTTC-2612
40 X 12	ERTTC-4012
51 X 12	ERTTC-5112

ROAD SIZE : 5/8"

ROAD TO CABLE CLAMP - G TYPE



Conductor Size (MM)	Product Code
3/8"	ERTCC-38
5/8"	ERTCC-58
3/4"	ERTCC-34

HEAVY DUTY CAST CABLE SADDLE



Conductor Size (MM)	Product Code
8	HDCCS-8
10	HDCCS-10

ROD TO CABLE CLAMP - U BOLT



Rod Size Inch	MM	Con. Size mm2	Product Code
3/8"	9.5	16-95	RTCCU-5816
5/8"	16.00	16-70	RTCCU-3420
3/4"	20.00	70-185	RTCCU-0116
		70-150	RTCCU-5820

TEST BOND



RIDGE SADDLE

HEAVY DUTY ARRESTOR BASE



LIGHT DUTY ARRESTOR BASE

CAST GROUND PLATE OR EARTH PLATE



COUPLER SIZE : 5/8" X 3/4"



TEE CLAMP



ROD TO TAPE COUPLING

WATERMAIN BOND CLAMP



SCREWDON TEST CLAMP

RAIN WATER RIPE BOND



TOWER BOND CLAMP

MULTIPLE POINT



COPPER BONDED / PURE COPPER EARTH ROD

CABLE GLANDS

BW 2 Part Type



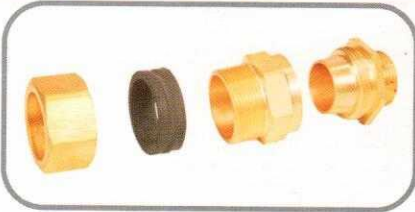
BW 3 Part Type



CW 3 Part Type



CW 4 Part Type



A1/A2 Type



E1W Type



Standard : BS6121 Part-1
 Size : 16 to 100 (S&L)
 Cable Gland Kits : BW 3 Part, CW 4 Part, A1/A2, 1 Pcs Kit.
 BW 2 Part, CW 3 Part, A2, E1W (16 to 32) 2 Pcs Kit 40 to 100 1 Pcs. Kit.

All type of accessories available like earth Tag, PVC/LSF shroud, Neoprine/LSF Rubber, PVC Washer & Brass Lock Nut.

CONDUIT FITTINGS

Nickle Plated Adapter



2 Pcs. Set

Nickle Plated Adapter



3 Pcs. Swivel Type

Brass Adapter Yellow Brass



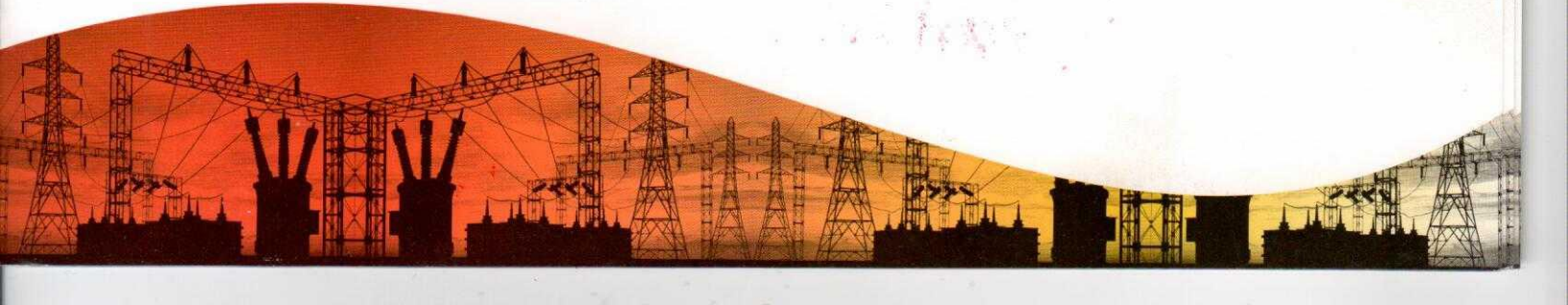
Male & Female Adapter

Brass Male & Female Bushes

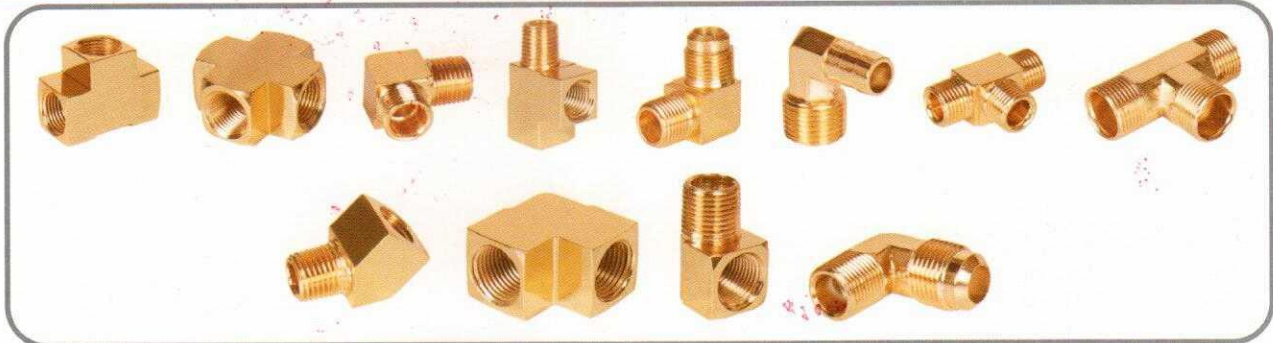


Metric Size : 16mm to 100mm
 Imperial Size : 1/2 inch to 2 inch

Also available as per custom special requirement.



Industrial Pipe Fittings / Gas Pipe Fittings

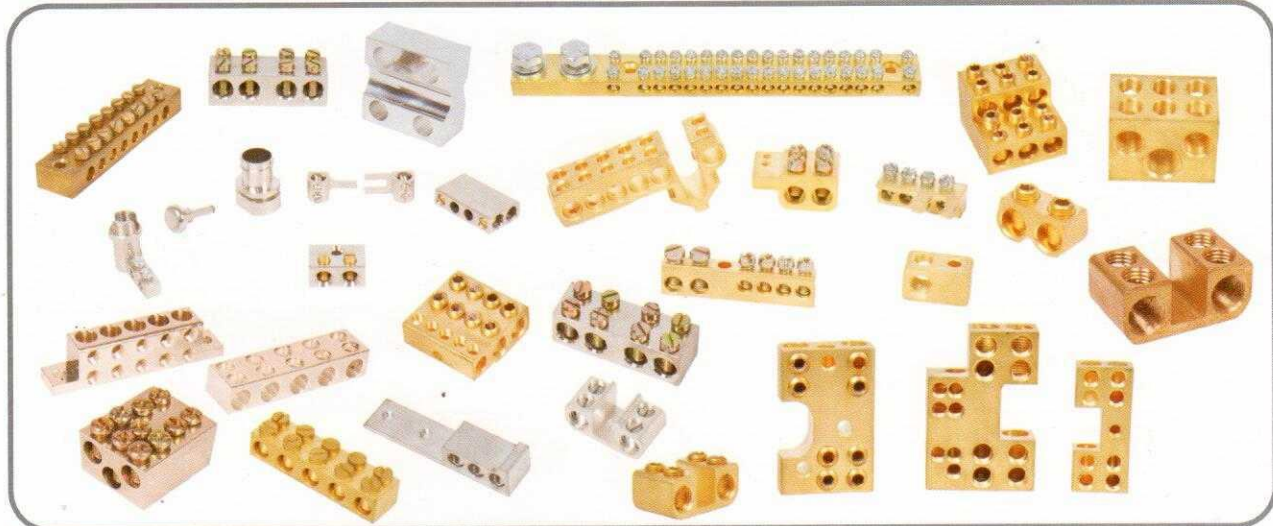


Heavier to lighter pipe fittings are remarkably produced in our industries to meet the needs of industrial Pipe Fittings, Air Compression Fittings and even Liquid Equipment Fittings.

Material Used : CDA 360, C2 114, C2 112

Size : Sizes vary from 1/8" to 3/4" and higher and lower configurations are also possible with us on requirement of the user.

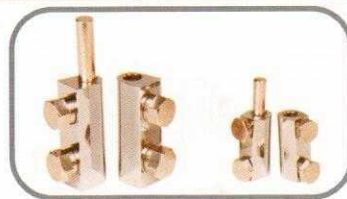
Neutral Links / Earth Terminal Blocks & Grounding Connector Lugs



Material : Free cutting brass IS 319 Type(1), Free cutting brass as per BS 249 Type (1), High grade free cutting brass.

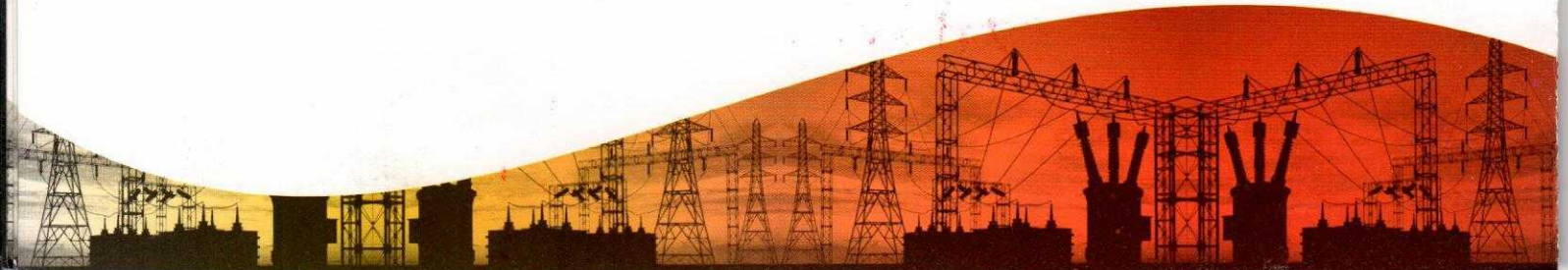
Finish & Plating : Natural, Nickel Plated, Tin Plated or any coating as per customer specification.

Brass Hinges



Material : Free cutting brass IS 319 Type(1)
: Free cutting brass as per BS 249 Type(1)
: High grade free cutting brass

Finish & Plating : Natural, Chrome Plated or any Coating as per Customer Specification.



TERMINAL & CONNECTOR

ALUMINIUM MECHANICAL LUGS ONE CONDUCTOR



*These dual rated one-conductor lugs are constructed from high strength Aluminum alloy and electro tin plated to provide low contact resistance."

*Lugs can be made with multiple mounting holes on request.

MECHANICAL CABLE LUGS 2 BOLT / 4 BOLT



*Material: CuZn39Pb3

*Bolts & Washer Mild Steel with 10 Micron Zinc Plating

*Body & Clamping Pad Electro Tin Plated

**Also available as per customer's design & their sample.

COPPER & ALUMINIUM LAY IN LUG



Wire Range #14-#4CU, Stud Hole #10

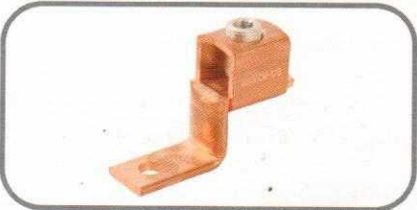
*Lay in lug is manufactured from high strength pure electrolytic copper to ensure maximum strength & conductivity.

*The open faced design allows for fast lay-in of the conductor without need for cutting or breaking.

*Also available with tinned

*Also available in aluminium material

SOLDER LESS LUG



Made from E-Copper. Screw available with SS screw & MS screw.

AMT RATING : 25AMP to 650AMP

Wire Range : 14STR - 1000MCM

GROUNDING CONNECTOR LUGS



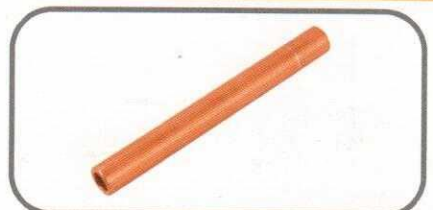
*Material : Copper Alloys

*Finish : Electro-plated

*Conductor size : 14AWG - 4AWG

*For Grounding Satellite Dish Installation

COPPER CONNECTOR WITH SOLID BARRIER



*For similar Cable Cross Section Area.

*Material : E-Copper

*Finish : Copper / Electro Tinned

SOLDERING TYPE TUBULAR CABLE LUGS



*Manufactured from pure electrolytic copper.

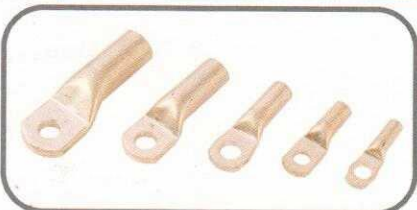
*Copper lugs & cable terminals from 15 to 1000 mm² with different stud hole sizes as required.

*lead free electro tin plated to prevent atmospheric corrosion.

*Cable lugs are fully annealed to guarantee optimum ductility.

*Our all products are as per rohs compliance

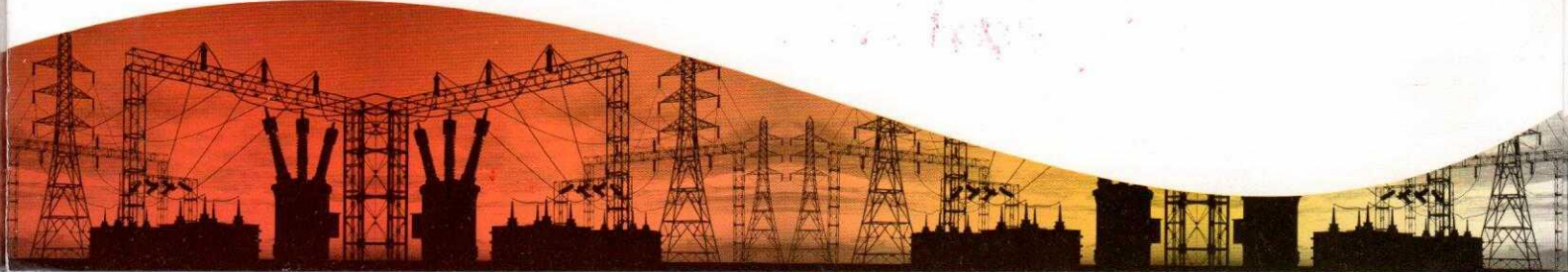
COPPER CABLE LUGS TINNED



These terminals are designed for high voltage applications, upto 33kv.

They are manufactured from high purity copper tube, annealed & tin plated. The extended barrel enhances both electrical and mechanical performance.

The absence of an inspection hole to prevent moisture entry into the crimped joint makes these terminals suitable for outdoor applications.



CNC COMPONENTS



Precision Turned Parts with $\pm 0.04\text{mm}$.
According to your Drawing / Specification :

- Drilled
- Milled
- Knurled
- Grinded
- Profile Parts

Material : Ferrous & Non-Ferrous

