

## PDU

# CATALOGUE 2025



# Contents

The Assurance for Your Data Center	1
Modular PDU Design	2-3
TEM Basic PDU	4
Horizontal 1U	5-6
Vertical 1U	7-8
TEM Smart PDU	9
TEM RS PDU Vertical & Horizontal	10
TEM IP PDU Vertical & Horizontal	11

## Versatile Power Solutions for Every Rack!

Today's data centers must meet diverse demands, including security, accessibility, energy efficiency, automation, and cutting-edge technology.

### TEM PDU Solutions:

**Wide Product Range:** Basic PDUs offering various socket standards and protection types.

**Versatile Profiles:** Multiple profile options to suit your needs.

**Smart Series:** Comprehensive power distribution solutions with RS-PDU and IP-PDU.

### Key Benefits:

**Enhanced Accessibility:** Intelligent functionality for uninterrupted operation.

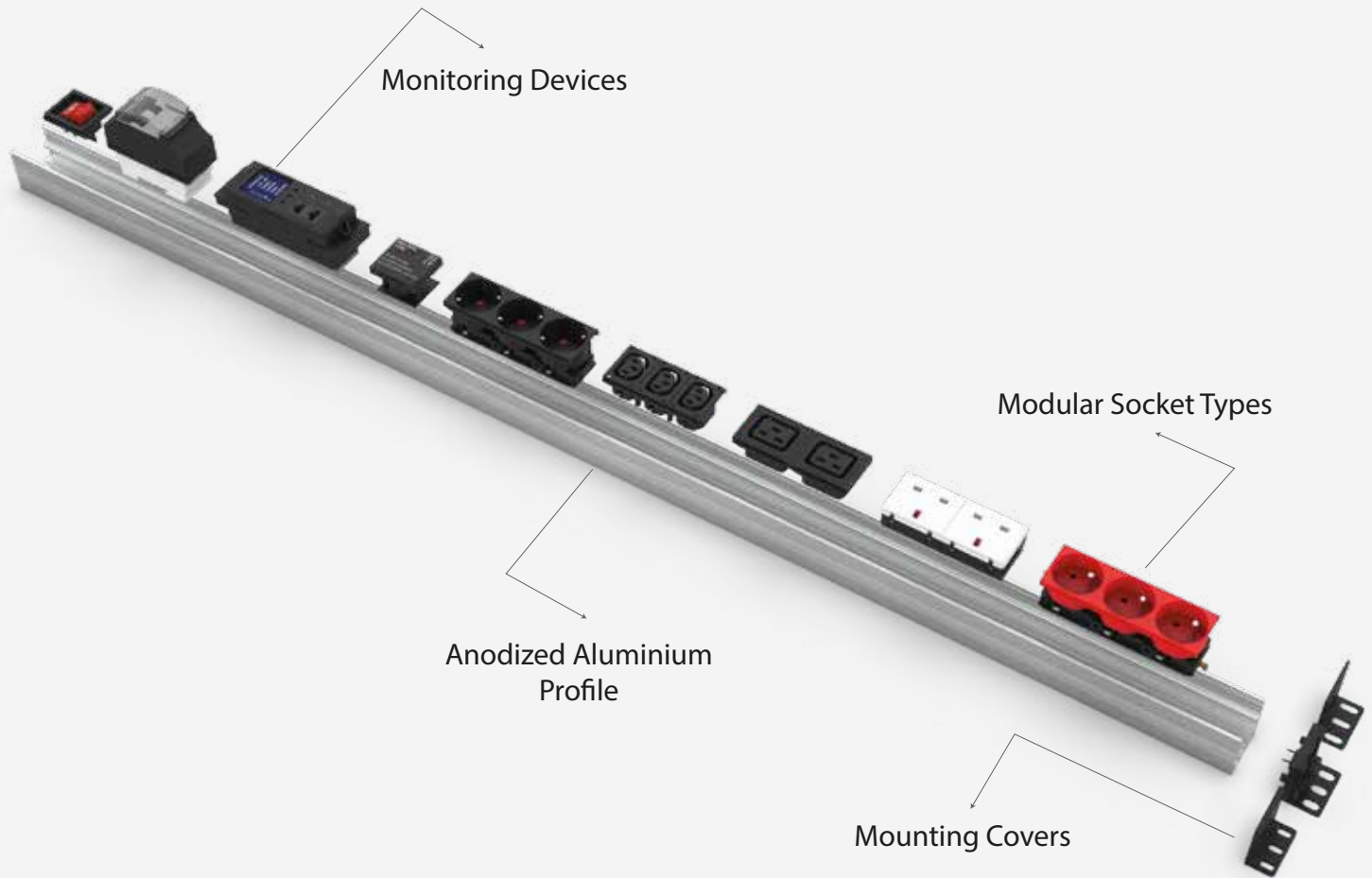
**Reduced Energy Consumption:** Critical data provided for Power Usage Effectiveness optimization.

**Efficient Resource Management:** Improves energy efficiency, lowers costs, and simplifies capacity planning.

**Seamless Integration:** Cascade connections via Modbus for easy scalability. Contact us for your customized solutions!

# Modular PDU Design

TEM PDUs are built with a modular structure, offering flexibility to adapt to various needs while optimizing energy management and simplifying customization.



## Advantages of Modular Design

**Easy Customization:** Configure socket types, protection modules, and more to meet your specific requirements.

**Scalability:** Expand your system by adding new modules without replacing the entire unit.

**Effortless Maintenance:** Modules can be easily removed and replaced, minimizing downtime during servicing.

**Versatile Applications:** Suitable for data centers, industrial facilities, and office environments with diverse options.

# Modular PDU Design

Easy Customization: Configure socket types, protection modules, and more to meet your specific requirements.

## Current Monitoring Modules



IP Module



RS Module



Amperemeter

## Protection Modules



Surge Protection



Switch



Current Protected Products with Switch



Single MCB



Double MCB



Current Protected Products with Button

# TEM Basic PDU

## Basic Yet Essential: The Core of Your Power System!

(Power Distribution Unit) is a simple yet reliable device designed to distribute power from a single source to multiple devices efficiently. It is an essential component for data centers, offices, and industrial facilities.



*Basic PDUs provide a straightforward solution for power distribution needs, making them perfect for setups where simplicity and efficiency are key.*

## Key Features:

**Versatile Socket Options:** Compatible with global standards (C13, C19, Schuko, etc.).

**Reliable Power Distribution:** Protects connected devices with overload and short-circuit safety.

**Reliable Power Distribution:** Protects connected devices with overload and short-circuit safety.

**Flexible Design:** Various lengths, mounting options, and socket configurations available.

**Easy Installation:** Quick integration with vertical or horizontal rack mounting.

## Applications:

**Data Centers:** Powers servers and network equipment.

**Offices:** Distributes electricity to computers and peripherals.

**Industrial Use:** Supplies power to test and production equipment.

## Benefits:

**Cost-Effective:** Ideal for applications requiring basic power distribution.

**Durable:** Built with high-quality materials for long-term reliability

**Customizable:** Adaptable to specific power needs.



## Mounting Covers



Flat L Side Cover



Rotating Side Cover



With Connector Side Cover



Straight Side Cover

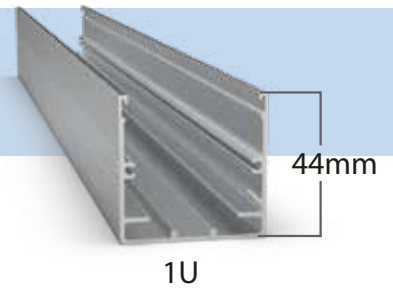


Adjustable Short Side Cover



Adjustable Long Side Cover

# TEM Basic PDU 19" Horizontal Mount



## Standard

19.1400.P19.03	9 x Schuko socket outlet with earthing contact
19.1400.P19.03.L	9 x Schuko socket outlet with earthing contact with indicator light
19.1400.P59.03	9 x UTE socket outlet with earthing contact
19.1400.P311.03	11 x C13 socket outlet with earthing contact
19.1400.P97.03	7 x C19 socket outlet with earthing contact

## Switch

19.14003.P19.03	9 x Schuko socket outlet with earthing contact
19.14003.P59.03	9 x UTE socket outlet with earthing contact
19.14003.P310.03	10 x C13 socket outlet with earthing contact
19.14003.P96.03	6 x C19 socket outlet with earthing contact

## Overvoltage Protection

19.14004.P18.03	8 x Schuko socket outlet with earthing contact
19.14004.P58.03	8 x UTE socket outlet with earthing contact

## Overvoltage Protection + Switch

19.14015.P15.03	5 x Schuko socket outlet with earthing contact
19.14015.P55.03	5 x UTE socket outlet with earthing contact

## Overvoltage Protection + Mains and Frequency Filter

19.14014.P16.03	6 x Schuko socket outlet with earthing contact
19.14014.P56.03	6 x UTE socket outlet with earthing contact

## MCB Protection

19.14001.P17.03	7 x Schuko socket outlet with earthing contact
19.14001.P57.03	7 x UTE socket outlet with earthing contact

## Double MCB Protection

19.14002.P15.03	5 x Schuko socket outlet with earthing contact
19.14002.P55.03	5 x UTE socket outlet with earthing contact

## Current Protected Products with Button

19.14012.P17.03	7 x Schuko socket outlet with earthing contact
19.14012.P57.03	7 x UTE socket outlet with earthing contact

## Current Protected Products with Switch

19.14013.P17.03	7 x Schuko socket outlet with earthing contact
19.14013.P57.03	7 x UTE socket outlet with earthing contact

# Vertical OU



Rotating Side Cover



Rotating Side Cover

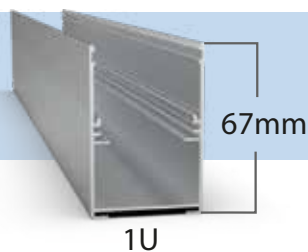


Rotating Side Cover



Rotating Side Cover

# TEM Basic PDU OU Vertical Mount



## 1P - 16A

1600.P324P94.14	24xC13 4xC19 3 meter 3x2.5mm <sup>2</sup> H05VV-F cable with 3x16 CEE plug	1184x67x44,3
600.P318P94.14	18xC13 4xC19 3 meter 3x2.5mm <sup>2</sup> H05VV-F cable with 3x16 CEE plug	1004x67x44,3
1600.P118.14.325	18 x Schuko 3 meter 3x2.5mm <sup>2</sup> H05VV-F cable with 3x16 CEE plug	953x67x44,3

## 1P - 32A

160026.P324P94.14	24xC13 4xC19 2xFuses (2x16A Type B) 3 meter 3x4mm <sup>2</sup> H05VV-F supply cable with 3x32 CEE plug	1319x67x44,3
160026.P318P94.14	18xC13 4xC19 2xFuses (2x16A Type B) 3 meter 3x4mm <sup>2</sup> H05VV-F supply cable with 3x32 CEE plug	1139x67x44,3
160026.P118.14	18xSchuko 2xFuses (2x16A Type B) 3 meter 3x4mm <sup>2</sup> H05VV-F supply cable with 3x32 CEE plug	1053x67x44,3

## 3P - 16A

1600.P324P96.14	24xC13 6xC19 3 meter 5x2.5mm <sup>2</sup> H05VV-F cable with 5x16 CEE plug	1326x67x44,3
1600.P318P96.14	18xC13 6xC19 3 meter 5x2.5mm <sup>2</sup> H05VV-F cable with 5x16 CEE plug	1233x67x44,3
1600.P118.14.525	18xSchuko 3 meter 5x2.5mm <sup>2</sup> H05VV-F cable with 5x16 CEE plug	998x67x44,3

## 3P - 32A

1600166.P12P324P96.14	24xC13 6xC19 2xCee 6xFuses (6x16A Type B) 3 meter 5x4mm <sup>2</sup> H05VV-F cable with 5x32 CEE plug	1896x67x44,3
1600166.P324P96.14	24xC13 6xC19 6xFuses (6x16A Type B) 3 meter 5x4mm <sup>2</sup> H05VV-F cable with 5x32 CEE plug	1754x67x44,3
1600166.P318P96.14	18xC13 6xC19 6xFuses (6x16A Type B) 3 meter 5x4mm <sup>2</sup> H05VV-F cable with 5x32 CEE plug	1580x67x44,3

# TEM Smart PDU

## The New Standard of Smart Power

TEM RS and IP PDUs deliver innovative solutions to optimize energy management in your data center.

Discover how TEM RS and IP PDUs empower your energy management with smart, modular, and efficient solutions. Let us help you create the perfect power system for your data center!"



## Key Features & Benefits

### Control Every Phase, Master Every Detail

Phase-level measurement for precise energy monitoring and management

### Modular Design, Maximum Flexibility

Fully compatible with TEM Basic PDUs.

Customizable with various socket combinations.

Space-saving design ensures optimized cabling and airflow.

### Choose the Connectivity You Need

**RS PDU:** Connects to monitoring devices or directly to your software via RS-485 protocol.

**IP PDU:** Enables remote control and monitoring through an integrated web server or SNMP-compatible software.

### Real-Time Data at Your Fingertips

View key metrics like current, voltage, frequency, power factor, and more via the backlit display or web interface.

Integrated alarms for current, neutral current, temperature, and humidity monitoring.

### Enhance with Optional Modules

Temperature and humidity sensors (°C, %RH).

Surge protection module (SPD).

# TEM RS PDU Vertical & Horizontal



## 19" 1U Horizontal RS PDU

19.1400.P16.03.RS	6 x Schuko outlet with earthing contact
19.1400.P38.03.RS	8 x C13 outlet with earthing contact with indicator light
19.1400.P96.03.RS	6 x C19 outlet with earthing contact with indicator light

## OU - 1P - 16A

1600.P324P94.14.RS	24xC13 4xC19 3 meter 3x2.5mm <sup>2</sup> H05VV-F supply cable with 3x16 CEE inlet plug	1398x67x44,3
1600.P318P94.14.RS	18xC13 4xC19 3 meter 3x2.5mm <sup>2</sup> H05VV-F supply cable with 3x16 CEE inlet plug	1219x67x44,3
1600.P118.14.325.RS	18xCEE7/3 3 meter 3x2.5mm <sup>2</sup> H05VV-F supply cable with 3x16 CEE inlet plug	1133x67x44,3

## OU - 1P - 32A

16002.P324P94.14.RS	24xC13 4xC19 2xFuses (2x16A Type B) 3 meter 3x4mm <sup>2</sup> H05VV-F cable with 3x32 CEE inletplug	1534x67x44,3
16002.P318P94.14.RS	18xC13 4xC19 2xFuses (2x16A Type B) 3 meter 3x4mm <sup>2</sup> H05VV-F cable with 3x32 CEE inlet plug	1355x67x44,3
16002.P118.14.RS	18xCEE7/3 2xFuses (2x16A Type B) 3 meter 3x4mm <sup>2</sup> H05VV-F supply cable with 3x32 CEE inlet plug	1269x67x44,3

## OU - 3P - 16A

1600.P324P96.14.RS	24xC13 6xC19 3 meter 5x2.5mm <sup>2</sup> H05VV-F cable with 5x16 CEE inlet plug	1592x67x44,3
1600.P318P96.14.RS	18xC13 6xC19 3 meter 5x2.5mm <sup>2</sup> H05VV-F cable with 5x16 CEE inlet plug	1414x67x44,3
1600.P118.14.525.RS	18xCEE7/3 3 meter 5x2.5mm <sup>2</sup> H05VV-F cable with 5x16 CEE inlet plug	1179x67x44,3

## OU - 3P - 32A

1600166.P324P96.14.RS	24xC13 6xC19 6xFuses (6x16A Type B) 3 meter 5x4mm <sup>2</sup> H05VV-F cable with 5x32 CEE inlet plug	1844x67x44,3
1600166.P318P96.14.RS	18xC13 6xC19 6xFuses (6x16A Type B) 3 meter 5x4mm <sup>2</sup> H05VV-F cable with 5x32 CEE inlet plug	1760x67x44,3
1600166.P118.14.RS	18xCEE7/3 6xFuses (6x16A Type B); 3 meter 5x4mm <sup>2</sup> H05VV-F cable with 5x32 CEE inlet plug	1583x67x44,3



## 19" 1U Horizontal IP PDU

19.1400.P16.03.IP	6 x Schuko outlet with earthing contact
19.1400.P38.03.IP	8 x C13 outlet with earthing contact with indicator light
19.1400.P96.03.IP	6 x C19 outlet with earthing contact with indicator light

## OU - 1P - 16A

1600.P324P94.14.IP	24xC13 4xC19 3 meter 3x2.5mm <sup>2</sup> H05VV-F supply cable with 3x16 CEE inlet plug	1398x67x44,3
1600.P318P94.14.IP	18xC13 4xC19 3 meter 3x2.5mm <sup>2</sup> H05VV-F supply cable with 3x16 CEE inlet plug	1219x67x44,3
1600.P118.14.325.IP	18xCEE7/3 3 meter 3x2.5mm <sup>2</sup> H05VV-F supply cable with 3x16 CEE inlet plug	1133x67x44,3

## OU - 1P - 32A

16002.P324P94.14.IP	24xC13 4xC19 2xFuses (2x16A Type B) 3 meter 3x4mm <sup>2</sup> H05VV-F cable with 3x32 CEE inletplug	1534x67x44,3
16002.P318P94.14.IP	18xC13 4xC19 2xFuses (2x16A Type B) 3 meter 3x4mm <sup>2</sup> H05VV-F cable with 3x32 CEE inlet plug	1355x67x44,3
16002.P118.14.IP	18xCEE7/3 2xFuses (2x16A Type B) 3 meter 3x4mm <sup>2</sup> H05VV-F supply cable with 3x32 CEE inlet plug	1269x67x44,3

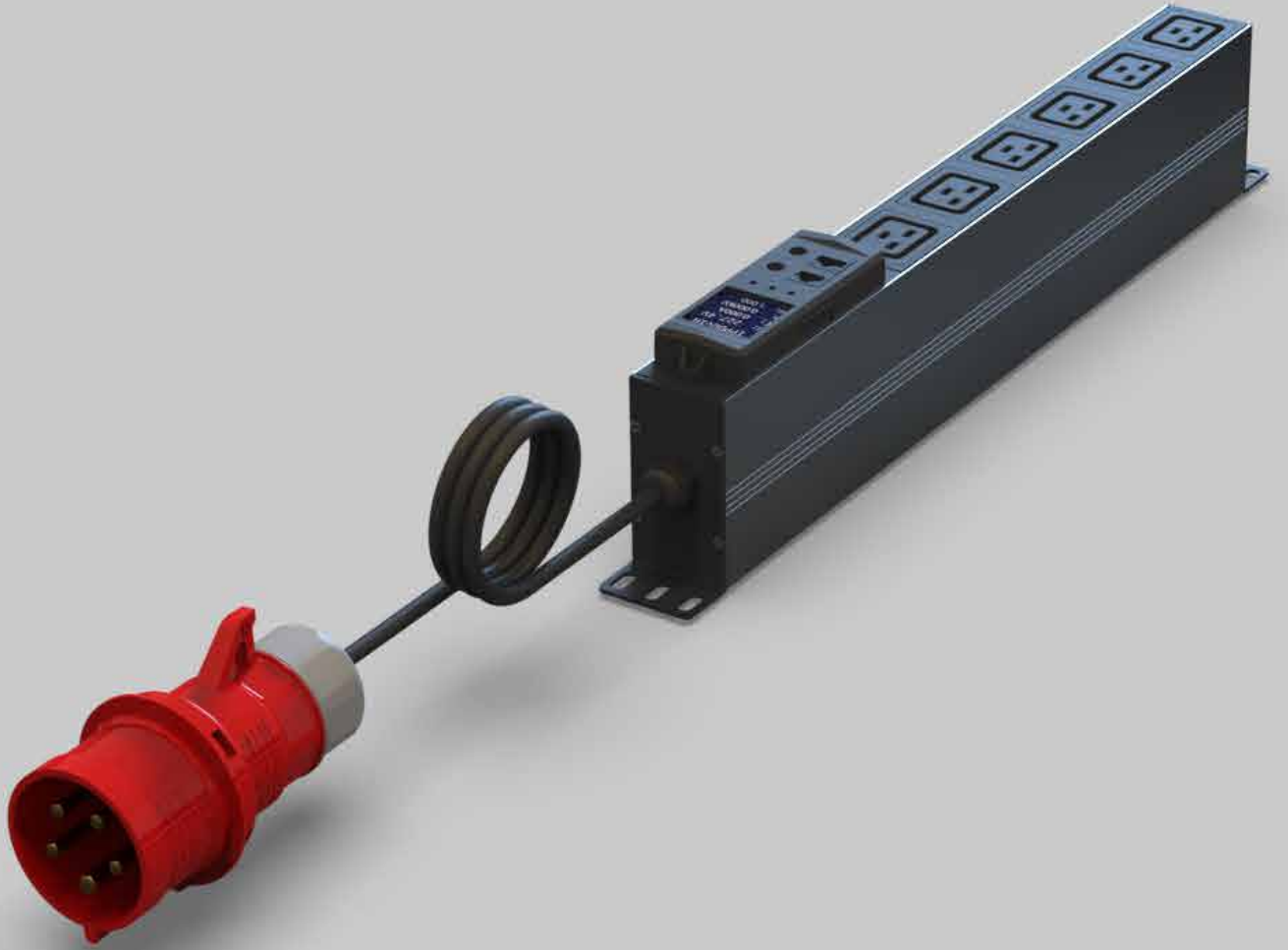
## OU - 3P - 16A

1600.P324P96.14.IP	24xC13 6xC19 3 meter 5x2.5mm <sup>2</sup> H05VV-F cable with 5x16 CEE inlet plug	1592x67x44,3
1600.P318P96.14.IP	18xC13 6xC19 3 meter 5x2.5mm <sup>2</sup> H05VV-F cable with 5x16 CEE inlet plug	1414x67x44,3
1600.P118.14.525.IP	18xCEE7/3 3 meter 5x2.5mm <sup>2</sup> H05VV-F cable with 5x16 CEE inlet plug	1179x67x44,3

## OU - 3P - 32A

1600166.P324P96.14.IP	24xC13 6xC19 6xFuses (6x16A Type B) 3 meter 5x4mm <sup>2</sup> H05VV-F cable with 5x32 CEE inlet plug	1844x67x44,3
1600166.P318P96.14.IP	18xC13 6xC19 6xFuses (6x16A Type B) 3 meter 5x4mm <sup>2</sup> H05VV-F cable with 5x32 CEE inlet plug	1760x67x44,3
1600166.P118.14.IP	18xCEE7/3 6xFuses (6x16A Type B); 3 meter 5x4mm <sup>2</sup> H05VV-F cable with 5x32 CEE inlet plug	1583x67x44,3





# TEM

[www.temteknik.com](http://www.temteknik.com)

TEM Teknik Elektrik Malzemeleri San ve Tic A.Ş

**Headquarter:**

Ortaköy San. M.Menekse No:5 34582  
Silivri / İstanbul / TÜRKİYE

**Plant Malkara**

Çavuşköy Ergenekon No:11 59300  
Malkara / Tekirdağ / TÜRKİYE

+90 212 485 19 00

[info@temteknik.com](mailto:info@temteknik.com)

[export@temteknik.com](mailto:export@temteknik.com)