



# DIY Product Catalog 2025-2026

Glob-el China

6 Miaoban Road,  
Changzhou 213165, China

[www.glob-el.com](http://www.glob-el.com)





**35+**

years of  
industry  
experience

### Tailor-made electrical solutions that elevate your product portfolio

At Glob-el, we deliver complete solutions that enhance and support our clients' brands. With decades of experience in OEM and ODM services, we provide end-to-end capabilities, from design and prototyping to production and packaging.

With over 35 years of expertise in electrical engineering and product manufacturing, Glob-el delivers trusted solutions for both professionals and DIY users.

Whether you're developing a custom product or expanding your existing range, Glob-el is your trusted partner in providing high-quality products and solutions.

## About us

**Your trusted partner in electrical innovation and excellence**

The company was founded in 1990. We focus on the R&D and manufacturing of electrical, electronic and lighting products in the field of construction and installation.

### Tailor-made electrical solutions that elevate your product portfolio

ODM/OEM Customization: From concept design to certified production  
White-Label Solutions: 3000+ market-ready products for rapid branding

### International Team

Chinese Cost Efficiency, European Localized Service

# Accreditations and Certifications

Our certifications and accreditations reflect Glob-el's dedication to delivering high-quality, safe, and reliable products that meet rigorous international standards and industry requirements. Our certifications and accreditations reflect Glob-el's dedication to delivering high-quality, safe, and reliable products that meet rigorous international standards and industry requirements.

## Management System Certifications



## Technical Capabilities

- Professional engineering team
- 100+ technical patents
- National High-Tech Enterprise certification
- Refined, Precision & Innovative Enterprise
- Provincial R&D Center
- Member of National Electrical Accessories Standardization Committee



## Product Compliance Certifications



# Switches and Sockets

## Switches and Sockets



### U series

#### Flush-type wall rocker switch for fixed installation, screw terminal

**Technical Data:** 16AX 250VAC

**IP-Class:** IP20

**Certificate(s):** CE, Semko

**Technical info:**

Wiring diagram printed on the rear side.

Thermoplastic in the rocker and cover plate.

Screw terminals.

Flush wiring.

Fit into wall boxes, screw distance cc 60 mm -cover plate cc 84 mm.



U201,U352



U202



U203



U204,U351



U214

Type	Description/Remark
U201	1 pole / 2-way, pattern No. 1/6
U202	2-pole, pattern No. 2
U203	1+2-pol, pattern No. 1+2
U204	1 pole and 2-way, pattern No. 5
U351	2 pole and 2-way, pattern No. 6+6
U352	Reversing switch, pattern No. 7
U353	3 gang, pattern No. 1+1+1
U214	1-pole, plus w/spring(doorbell),pattern No.1



## U series

### Single way Flush-type wall socket outlet for fixed installation, screw terminal



U207

**Technical Data:** 16A 250VAC

**IP-Class:** IP20

**Certificate(s):** Semko

**Technical info:**

Socket outlet with thermoplastic cover. Screw (Pozidriv) terminals socket base, flush wiring. With shutter.

Thermoplastic center plate 55X55 mm, which fits into "U" series combination plate

Special house (B240) for single socket outlets - used when flush mounting cable installation enters as surface mounting, covering the flush box, may be used.

There have one screw in the cover plate.

Fit into wall boxes, screw distance cc 60 mm

Type	Description/Remark
U207	1-way socket , earthed

### Double way Flush-type wall socket outlet for fixed installation, screw terminal



U246

**Technical Data:** 16A 250VAC

**IP-Class:** IP20

**Certificate(s):** Semko

**Technical info:**

Socket outlet with thermoplastic cover. Screw (Pozidriv) terminals socket base, flush wiring. With shutter.

There have two screws in the cover plate.

Fit into wall boxes, screw distance cc 60 mm

Type	Description/Remark
U246	2-way socket , without earth
U022	2-way socket , earthed



U022

### Double way Flush-type wall socket outlet for fixed installation, Low profile, screw terminal



U022L

**Technical Data:** 16A 250VAC

**IP-Class:** IP20

**Certificate(s):** Semko

**Technical info:**

Socket outlet with thermoplastic cover. Screw (Pozidriv) terminals socket base, flush wiring. With shutter.

There have two screws in the cover plate.

Fit into 1.5 way wall boxes, screw distance cc 60 mm

Type	Description/Remark
U022L	2-way socket , earthed

## U series

### Triple way Flush-type wall socket outlet for fixed installation, screw terminal



**Technical Data:** 16A 250VAC

**IP-Class:** IP20

**Certificate(s):** Semko

**Technical info:**

Socket outlet with thermoplastic cover. Screw (Pozidriv) terminals socket base, flush wiring. With shutter.

There have two screws in the cover plate.

Fit into wall boxes, screw distance cc 60 mm

Special house (B400) - used when mounting on corner of wall, may be used.

Type	Description/Remark
U401	3-way socket , with earth



### One way Flush-type wall socket outlet for fixed installation, screw terminal

**Technical Data:** 16A 250VAC

**IP-Class:** IP44

**Certificate(s):** Semko

**Technical info:**

Socket outlet with thermoplastic cover. Screw (Pozidriv) terminals socket base, flush wiring. With shutter.

Thermoplastic center plate 55X55 mm, which fits into "U" series combination plate, but only reach Ip20.

Special house (B240) for single socket outlets - used when flush mounting cable installation enters as surface mounting, covering the flush box, may be used.

There have one screw in the cover plate.

Fit into wall boxes, screw distance cc 60 mm

Type	Description/Remark
U20944	1-way socket , earthed, Ip44



## U series

### Flush-type RCCB socket for fixed installation

**Technical Data:**

Rated voltage: 230VAC 50Hz

Rated current: 16A

$I_{\Delta n} \leq 30\text{mA}$

$I_{bc} = I_{sc} = 1500\text{A}$ , type A

Trip times  $\leq 30\text{ms}$

Poles No.: 1P+N

**IP-Class:** IP44 (with mounting on level surface)

**Technical info:**

The working principle of the safety socket outlets is the same as that of a residual current device.

The fault current protection related all devices and cables witch are connected to the safety socket outlet.

Flush type.

Suitable for using in indoor and outdoor areas.

Rewirable, Screwless terminal, capacity: 1.5-2.5mm<sup>2</sup>, the length of insulation to be removed is 12mm.

With shutter.

With plastic frame and cover, with a self-closing water proof lid.

Class I

"T" is marked on the test button and "R" is marked on the reset button.



Type	Description/Remark
U209Q44R	RCCB Socket, Schuko type, 30mA, Ip44

### Coaxial outlets

**Technical Data:** 75 ohm, 7 dB

**IP-Class:** IP20

**Technical info:**

Flush mounted

Special house (U240) for coaxial outlets - used when flush mounting cable installation enters as surface mounting, covering the flush box, may be used

There have single screw (Pozidriv) in the cover plate

Fit into wall boxes, screw distance cc 60 mm

With end terminator (75 ohm)

Thermoplastic center plate 55X55 mm, which fits into "U" series combination plate

Type	Description/Remark
U213	TV/Radio
U215	TV/Radio/Satellite
U213W	Without unit
U215W	Without unit



U213



U215

## U series

### Telephone & Network Socket Panel without modular jacks, for Keystone modular



**Technical Data:** Cat 5e or Cat 6

**IP-Class:** IP20

**Technical info:**

Flush mounted system with modular outlets, fit modular 8 Categories 5e or Categories 6, RJ45, UTP. Special house (B240) for modular outlets - used when as surface mounting, covering the flush box, may be used

Fit into wall boxes, screw distance cc 60 mm

Thermoplastic center plate 55X55 mm, which fits into "U" series combination plate

With dust cover.

Non-screw cover plate.

The refs with "R" means red plastic is for the "Big" keystone (14.6x19.8) and "B" means black plastic is for "Small" keystone (15.6x19.2). Not much differences, but enough to make also smaller Keystone versions like Gigamedia, Eurolan etc.

Type	Description/Remark
U211WR	1xRJ45 dust-cover. Keystone size 14.6x19.8
U211WB	1xRJ45 dust-cover. Keystone size 14.6x19.2

### Telephone & Network Socket Panel without modular jacks, for Keystone modular



U210,U210-1

**Technical Data:** Cat 5e or Cat 6

**IP-Class:** IP20

**Technical info:**

Flush mounted system with modular outlets, Special house (U240) for modular outlets - used when flush mounting cable installation enters as surface mounting, covering the flush box, may be used

There have single screw (Pozidriv) in the cover plate

Fit into wall boxes, screw distance cc 60 mm

Thermoplastic center plate 55X55 mm, which fits into "U" series combination plate

With Stuffer Cup (made by transparent PC)

With shutter

2 x 8 Categories 5e or Categories 6, RJ45, UTP

Type	Description/Remark
U210W	2 x RJ45

## U series

### Telephone & Network Socket Panel without modular jacks, for LexCom modular



**Technical Data:** Cat 5e or Cat 6

**IP-Class:** IP20

**Technical info:**

This product is used to be able to mount the LexCom modular to our combination plate.

Flush mounted system without modular outlets,

Special house (U240) for modular outlets - used when flush mounting cable installation enters as surface mounting, covering the flush box, may be used

There have two screws (Pozidriv) in the cover plate

Fit into wall boxes, screw distance cc 60 mm

Thermoplastic center plate 55X55 mm, which fits into "U" series combination plate

Type	Description/Remark
U210W-L	2 x LexCom

### Cat6 UTP Tool-Free Keystone Modular

Comply with TIA/EIA-568-B.2-1 requirements

Tool Free

Adapt for 22-26AWG cable

**IDC Life:** Termination>200 times

**Jack Life:** Insertion>750 times

UL and ETL approved

**Contact material:** Phosphor Bronze+Gold Plating 50µm

Transmission bandwidth 250MHz



Type	Description/Remark
CAT6JACKTJS180	Toolless Keystone CAT6 RJ45 connector. UTP / Unshielded

## L series

### Digital dimmer



**Product Information:** ETM360P/ETM360X /36

**Color:** ETM360P (RAL9003, RAL9016) , ETM360X (RAL9003, RAL9017)

**Main material:** PC (Halogen free)

**IP-Class:** IP21

**Working Temperature:** -10°C-35°C

**Fire hazard test:** 650°C/850°C (IEC60695-2-11)

**The product complies with the standard(s):**

EN 60669-1:2018 EN IEC 60669-2-1:2022+A11

**The product is in conformity with the provisions of the following European directive(s):**

LVD (Low Voltage Directive) 2014/35/EU

EMC (Directive of Electromagnetic Compatibility) (2014/30/EU)

RoHS Directive (2011/65/EU)

WEEE Directive 2012/19/EU

REACH Directive (2006/121/EC)

**Certificate(s):** S, EMC, CE



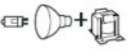
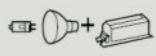



**Quality management system according to:** ISO 9001

**Environmental management system:** ISO 14001



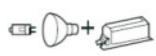

**Technical Info:** 230VAC

**Frequency:** 50Hz

**Supported load type: L,N Connection mode (with neutral lead)**

Load Pictures	Load type	Load range
	230V Incandescent lamp (ohmic load, code R)	2-400W
	230V halogen lamps (ohmic load, code R)	2-400W
	12V Low-voltage halogen lamps with dimmable wound (conventional) transformer (inductive load, code L)	2-315VA
	12V Low-voltage halogen lamps with electronic transformer (capacitive load, code C)	2-315VA
	Dimmable LED lamp (trailing edge, RC mode)	2-200VA
	Dimmable LED lamp (leading edge, RL mode)	2-40VA
	LED filament	2-200VA

**Supported load type: L Connection mode (without neutral lead)**

Load Pictures	Load type	Load range
	230V Incandescent lamp (ohmic load, code R)	2-400W
	230V halogen lamps (ohmic load, code R)	2-400W
	12V Low-voltage halogen lamps with electronic transformer (capacitive load, code C)	2-315VA
	Dimmable LED lamp (trailing edge, RC mode)	2-200VA

## L series

### U408

**Voltage/ Frequency/ Power:** 16A/250~,50Hz MAX 3600W

**Ipxx:** IP20

**Cable length if have:** NA

**House material:** PC

**CE compliance (LVD/EMC/Erp/RoHS...):**

LVD (Low Voltage Directive) 2014/35/EU

EMC (Directive of Electromagnetic Compatibility) (2014/30/EU)

RoHS Directive(2011/65/EU), (EU)2015/863

WEEE Directive(2012/19/EU)

REACH Directive(2006/1907/EC)

**Other detail specification:**

2 way corner box with 2 Schuko socket outlets and USB A+C charger, 9003 white, UV resistance

Socket Data: 16A/250~,50Hz MAX 3600W

USB Data:

Rated input: 230V~.50Hz.0.4A

Rated output:

Output Single A-port or Output Single C-port:5.0V DC

3.0A,15.0W:

9.0V DC 2.0A.18.0W:

12.0V DC 1.5A.18.0W:

Output A-port + Output C-port:5.0V DC3.0A, 15.0W (3.0A in total)



### U411

**Voltage/ Frequency/ Power:** 16A/250~,50Hz MAX 3600W

**Ipxx:** Ip20

**Product dimension:** 226mm\*84mm\*77.2mm

**Cable length if have:** NA

**House material:** PC

**CE compliance (LVD/EMC/Erp/RoHS...):**

LVD (Low Voltage Directive) 2014/35/EU

EMC (Directive of Electromagnetic Compatibility) (2014/30/EU)

RoHS Directive (2011/65/EU) , (EU) 2015/863

WEEE Directive (2012/19/EU)

REACH Directive(2006/1907/EC)

**Other detail specification:**

3 way corner box with 3 Schuko socket outlets and USB A+C charger,9003 white, UV resistance

Socket Data:16A/250~,50Hz MAX 3600W

USB Data:

Rated input:230V~.50Hz.0.4A

Rated output:

Output Single A-port or Output Single C-port:5.0V DC

3.0A,15.0W:

9.0V DC 2.0A.18.0W:

12.0V DC 1.5A.18.0W:

Output A-port + Output C-port:5.0V DC3.0A, 15.0W (3.0A in total)



## L series

### USB-A&C charger



**Color:** White:RAL9003 ,Black: RAL9017  
**Main material:** PC  
**IP-Class:** IP20  
**Working Temperature:** 0°C-35°C  
**The product complies with the standard(s):**  
 EN IEC 62368-1:2020+A1: :2021 EN IEC 61558-1:2019  
 EN IEC 61558-2-16 2009/A1:2013  
**The product is in conformity with the provisions of the following European directive(s):**  
 LVD (Low Voltage Directive) 2014/35/EC  
 EMC (Directive of Electromagnetic Compatibility) (2014/30/EC) ErP Directive (2009/125/EC)  
 RoHS Directive (2011/65/EC) WEEE Directive (2002/96/EC) REACH Directive (2006/121/EC)  
**Certificate(s):** TUV mark CE  
**Quality management system according to:** ISO 9001  
**Environmental management system:** ISO 14001  
**Overvolatage category:** III  
**Rated input:** 220-250VAC, 50/60Hz, 0.8A  
**Rated output:**  
 Output Single A Port: 5.0VDC, 3.0A, 15.0W; 9.0VDC, 2.0A, 18.0W; 12.0VDC, 3.0A, 36.0W;  
 Output Single C Port: 5.0VDC, 3.0A, 15.0W; 9.0VDC, 2.0A, 18.0W; 12.0VDC, 3.0A, 36.0W;  
 15.0VDC,3.0A,45.0W; 20.0VDC,3.25A,65W;  
 Two at the same time: 5.0VDC, 3.0A, 15.0W (3.0A in total);  
**Output USB:** 65.0W.  
**Standby-operation:** 0.10W;  
**Energy efficiency:** Average active efficiency: 87.72%;  
 Efficiency at low load(10%) : 65%;

**Characteristics**  
 Equipped with Smart IC (intelligent device detection for optimal charging current), output overcurrent limiting, output overvoltage protection.The USB sockets are only for power supply.Data transfer does not take place.

Type	Description/Remark
ETM708X	Wall-Adapter, USB Power Output Ports

## L series

### Schuko Outlet with 2 USB ports

**IP-Class:** IP20  
**Socket Data:** 16A/250 ~, 50Hz MAX 3600W  
**USB Data:**  
**Rated input:** 230V~, 50Hz, 0.4A  
**Rated output:** Output Single A-port or Output Single C-port:  
 5.0V3.0A, 15.0W;  
 9.0V2.0A, 18.0W;  
 12.0V1.5A, 18.0W;  
 Output A-port + Output C-port:  
 5.0V3.0A, 15.0W (3.0A in total);

**Characteristics**  
 Equipped with Smart IC (intelligent device detection for optimal charging current), output overcurrent limiting, output overvoltage protection. The USB sockets are only for power supply. Data transfer does not take place.  
 USB Charger fit into standard wall boxes from Etman (c-c 60mm). By surface fixing, please use surface house (Typed B240).  
 By surface fixing, in combination with a switch or others, please use double surface house (Typed B429).  
 Thermoplastic center plate is 55X55 mm, which fits into Etman "B" series combination plate.  
 Screw terminal, capacity: 1.5-2.5mm2.  
 Only suitable for use in indoor areas.  
 Built-in protection circuit.



Type	Description/Remark
U703Q	Wall-Adapter, USB Power Output Ports

### Fast charging USB cable C to C 100W

**Color:** White with braided  
**Length:** 1.5m  
**Charging current:** 5A  
**Data transfer:** 480Mbps  
**Overheating protection**  
**Durability:** Mating & unmating 10000 cycles minimum  
**Conforms with:** CE, RoHS, REACH  
**Operating temperature:** -55°C to 85°C

Type	Description/Remark
ETM700CC	Fast charging USB cable C to C 100W



ETM700CC

### Fast charging USB cable A to C 65W

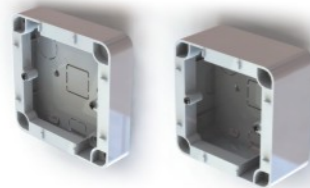
**Color:** White with braided  
**Length:** 1.5m  
**Charging current:** 3A  
**Data transfer:** 480Mbps  
**Overheating protection**  
**Durability:** Mating & unmating 10000 cycles minimum  
**Conforms with:** CE, RoHS, REACH  
**Operating temperature:** -55°C to 85°C

Type	Description/Remark
ETM700AC	Fast charging USB cable C to C 65W



ETM700AC

## Surface mounting frames



B239

B240

**IP-Class:** IP20

**Technical info:**

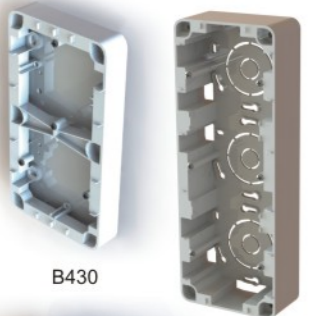
For already complete upholstered wall or corner of wall need add switch, socket, dimmer, timer or other electrical accessories.

Distance between fixing centre is 71 mm.

Distance of fixing centre is 60mm and M3 screws.

Without conduit entries.

84\*84mm or 84\*155mm depth 20mm/40mm



B430

B409



B429

Type	Description/Remark
B239	1 way , on wall frame for switch etc. , H=20mm
B240	1 way , on wall frame for dimmer etc. , H=40mm
B430	2 way , on wall frame for switch etc. , H=20mm
B429	2 way , on wall frame for dimmer etc. , H=40mm
B409	2 way , on wall frame for dimmer etc. , H=40mm



B402

B407

## Surface mounting frames

Type	Description/Remark
B402	2 way frame for corner of wall
B407	3 way frame for corner of wall



## Surface mounting junction boxes

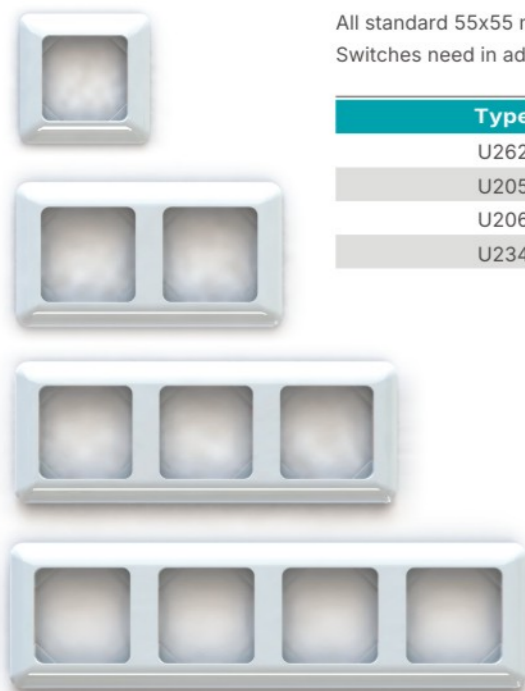
**Junction box IP20, 65\*65**

Type	Description/Remark	Size
B232	Ip55 box, IK10, used for outdoors, green or black color	294x164x95mm
B2320	IP55 box, IK10, used for outdoors, green or black color	388x268x129mm



## U series

### Combination plate



All standard 55x55 mm central plate equipment will fit into the combination plate.  
Switches need in addition a locking frame to fasten the combination plate to the switch-base.

Type	Description/Remark
U262	Single way frame
U205	Double way frame
U206	Three way frame
U234	four way frame

### Blind Cover



U263

Blind plate is for covering a not used hole in a combination plate.  
In some cases the installer puts in for example two wall boxes in the wall but only use one. For this case we need a blind plate to cover another one.



U264

Type	Description/Remark
U263	Blind plate
U264	Blind plate w/steel bracket

### Spring, $\Phi 3.35 \times 8\text{mm}$



The spring is used to mounting in insert of our normal switches work as push button.

Type	Description/Remark
U492	Spring, $\Phi 3.35 \times 8\text{mm}$

## U series

### Surface-type wall rocker switch for fixed installation, screw terminals

**Technical Data:** 16AX 250VAC

**IP-Class:** IP20

**Certificate(s):** CE, Semko,

**Technical info:**

Wiring diagram printed on the rear side.

Thermoplastic in the rocker and cover plate.

Screw terminals.

Flush wiring.

Screw distance cc 38 mm -cover plate cc 73 mm.

Space enough for cables up to 2.5 mm under the cover plate.

Base bottom plate acts at same time as a positioning guide by the door frame under installation.

Type	Description/Remark
U221	1 pole / 2-way, pattern No. 1/6
U222	2-pole, pattern No. 2
U223	1+2-pol, pattern No. 1+2
U224	1 pole and 2-way, pattern No. 5
U341	2 pole and 2-way, pattern No. 6+6
U344P	1-pol, plus w/spring (doorbell), pattern No. 1



U221



U222



U223



U224, U341



U344P

## U series

### Surface-type wall rocker switch for fixed installation, screw terminals, new size



U221E



U222E



U224E

**Technical Data:** 16AX 250VAC

**IP-Class:** IP20

**Certificate(s):** CE, Semko,

**Technical info:**

Wiring diagram printed on the rear side.

Thermoplastic in the rocker and cover plate.

Screw terminals.

Flush wiring.

Screw distance cc 38 mm -cover plate 75\*84 mm.

Space enough for cables up to 2.5 mm under the cover plate.

Base bottom plate acts at same time as a positioning guide by the door frame under installation.

Type	Description/Remark
U221E	1 pole / 2-way, pattern No. 1/6
U222E	2-pole, pattern No. 2
U224E	1 pole and 2-way, pattern No. 5

### Surface-type wall socket outlet for fixed installation, screw terminals



U1010

**Technical Data:** 16A 250VAC

**IP-Class:** IP20

**Certificate(s):** Semko

**Technical info:**

Surface mounted socket outlets with or without earth (schuko), with shutter, screw terminal.

Covering cap made of thermoplastic, which is less rigid but more durable than thermo-setting plastic.

Inclusive a back plate, on to which the socket insert is fixed.

Roomy space for cables under the broader covering cap. Fixing screw-holes in the back plate for the surface mounting, Screw distance cc 38 mm.

Type	Description/Remark
U1010	1-way socket, without earth

## U series

### Surface-type wall socket outlet for fixed installation, screw terminals



U1011



U2010

**Technical Data:** 16A 250VAC

**IP-Class:** IP20

**Certificate(s):** Semko

**Technical info:**

Surface mounted socket outlets with or without earth (schuko), with shutter, screw terminal.

Covering cap made of thermoplastic, which is less rigid but more durable than thermo-setting plastic.

Inclusive a back plate, on to which the socket insert is fixed.

Roomy space for cables under the broader covering cap. Fixing screw-holes in the back plate for the surface mounting, Screw distance cc 38 mm.

Type	Description/Remark
U1011	1-way socket, earthed
U2010	2-way socket, without earth

### Surface-type wall socket outlet for fixed installation, screw terminals



U2011



U241

**Technical Data:** 16A 250VAC

**IP-Class:** IP20

**Certificate(s):** Semko

**Technical info:**

Surface mounted socket outlets with or without earth (schuko), with shutter, screw terminal.

Covering cap made of thermoplastic, which is less rigid but more durable than thermo-setting plastic.

Inclusive a back plate, on to which the socket insert is fixed.

Roomy space for cables under the broader covering cap. Fixing screw-holes in the back plate for the surface mounting, Screw distance cc 38 mm.

Type	Description/Remark
U2011	2-way socket, earthed
U241	4-way socket, earthed

## U series

### Surface splash proof wall socket outlet for fixed installation, screw terminals



U270



U271

**Technical Data:** 16A 250VAC

**IP-Class:** IP44 (The lowest IP degree must be considered when combinations of plug and socket outlets are in use)

**Certificate(s):** Semko

**Technical info:**

Surface mounted socket outlets with or without earth (schuko), with shutter, screw terminal. Covering cap made of thermoplastic, which is less rigid but more durable than thermo-setting plastic. Inclusive a back plate, on to which the socket insert is fixed. Roomy space for cables under the broader covering cap. Fixing screw-holes in the back plate for the surface mounting, Screw distance cc 38 mm.

Type	Description/Remark
U270	1-way socket , earthed, IP44
U271	2-way socket , earthed, Ip44

### Surface splash proof wall rocker switch for fixed installation, screw terminals



U280

U282



U284



U281

**Technical Data:** 16AX 250VAC

**IP-Class:**

IP44 (The lowest IP degree must be considered when combinations of plug and socket outlets are in use)

**Certificate(s):** CE, Semko

**Technical info:**

Surface mounted - protected against corrosion. There is a knock-out draining hole in the bottom to let out condensation water. Wiring diagram printed on the rear side. Thermoplastic in the rocker and cover plate. Screw terminals. Flush wiring.

Type	Description/Remark
U280	2-pole, pattern No. 2
U282	1 pole / 2-way , pattern No. 1/6
U284	1 pole and 2-way, pattern No. 5
U281	2 x 2-pole , 16A , pattern No. 2, IP44

## U series

### Surface splash proof wall rocker switch for fixed installation, screw terminals

**Technical Data:** 16AX 250VAC

**IP-Class:**

IP44 (The lowest IP degree must be considered when combinations of plug and socket outlets are in use)

**Certificate(s):** CE, Semko

**Technical info:**

Surface mounted - protected against corrosion. There is a knock-out draining hole in the bottom to let out condensation water. Wiring diagram printed on the rear side. Thermoplastic in the rocker and cover plate. Screw terminals. Flush wiring.



U410

Type	Description/Remark
U410	Turn switch , 2-pole , 16A , pattern No. 2, IP44



## E series

### ETM022EQL



ETM022EQL, ETM022EQ

### ETM022EQ



ETM022EQL, ETM022EQ

### ETM207EQ



ETM207EQ

### ETM207EQW



ETM207EQW

Type	Description/Remark
ETM022EQL	2-way Schuko socket earthed, frame version

Type	Description/Remark
ETM022EQ	2-way Schuko socket earthed, normal version

Type	Description/Remark
ETM207EQ	1-way Schuko socket earthed

Type	Description/Remark
ETM207EQW	1-way Schuko socket earthed, without frame

## E series

### ETM201EQ



ETM201EQ

### ETM202EQ



ETM202EQ

### ETM203EQ



ETM203EQ

### ETM204EQ



ETM204EQ

Type	Description/Remark
ETM201EQ	1 pole/2-way, patteNo.1/6

Type	Description/Remark
ETM202EQ	2 pole pattern No.2

Type	Description/Remark
ETM203EQ	1+2 pole, pattern No.1+2

Type	Description/Remark
ETM204EQ	1 pole and 2-way pattern No.5

## E series

### ETM351EQ



ETM351EQ

Type	Description/Remark
ETM351EQ	1+1pole and 2-way, pattern No.6+6

### ETM352EQ



ETM352EQ

Type	Description/Remark
ETM352EQ	Reversing switch, pattern No.7

### ETM353EQ



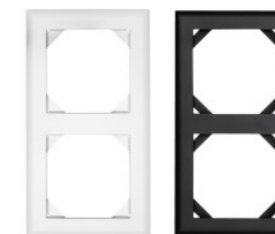
ETM353EQ

Type	Description/Remark
ETM353EQ	3 gang pattern No.1+1+1

## E series

### ETM205E

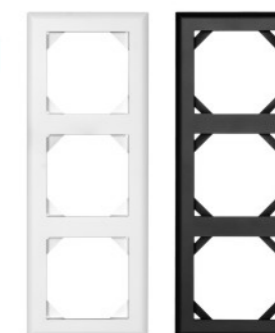
Type	Description/Remark
ETM205E	2 way Frame



ETM205E

### ETM206E

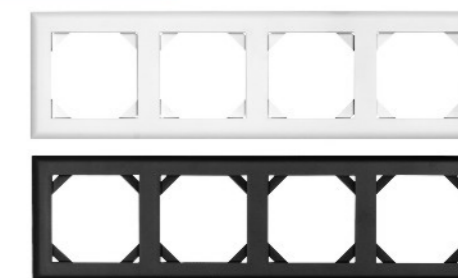
Type	Description/Remark
ETM206E	3 way Frame



ETM206E

### ETM234E

Type	Description/Remark
ETM234E	4 way Frame



ETM234E

### ETM295E

Type	Description/Remark
ETM295E	5 way Frame



ETM295E

# Luminaire Materials

## Luminaire Materials

### DCL plugs and sockets

**Technical Data:** 6A 250V~

**Frequency:** 50Hz

**IP-Class:** IP20

**Certificate(s):** CE, Semko

**Product info:**

DCL is a new plug and socket system for the connection of fixed lighting equipment, related standard EN 61995 valid from 2009-08-24.

This series includes:

#### Flush type roof DCL sockets:

Flush, round DCL sockets for roof box, includes suspension hook (Max load 15 kg), Collection thermoplastic has adopted newly developed operation. Attach screws applied in the correct mounting position c-c 67-78 mm, Fast connections for rigid conductors is up to 2.5 mm<sup>2</sup>, external dimensions: Ø110 mm.

Fits to Etman roof boxes typed ETM002S-2, ETM002S-3 and flush type junction box. Fits to all standard roof boxes and flush type junction boxes that are deeper than 40mm.

Type	Description/Remark
U710	Flush type roof DCL sockets



U710

#### Surface type roof DCL sockets:

Surface, round DCL sockets has integrated bottom plate, mounting directly in the ceiling, with demountable suspension hook (Max load 15 kg), Collection thermoplastic has adopted newly developed operation. Integrated base plate with 2 each 16mm and 20mm knockouts. The cover has 10pcs multiple size combined knock-outs on the sides of the cover.

Type	Description/Remark
U712	Surface type roof DCL sockets



U712



### Flush roof DCL socket for old roof boxes with center pin

**Technical Data:** 6A 250V~  
**Frequency:** 50Hz  
**Colour:** White(RAL9003 and RAL9016), Black  
**Main material:** PC (Halogen free)  
**IP-Class:** Ip20  
**Working temperature:** -25°C to +60°C  
**Installation temperature:** -5°Cto +25°C  
**Fire hazard test:** 650°C/850°C (IEC60695-2-11)  
**The product complies with the standard(s):** EN61995-1: Standard, EN61995-2: Standard sheets  
**The product is in conformity with the provisions of the following European directive(s):**  
 LVD (Low Voltage Directive)  
 RoHS Directive  
 WEEE Directive  
 REACH Directive  
**Certificate(s):** CE, Semko  
**Product info:**  
 DCL is a new plug and socket system for the connection of fixed lighting equipment, related standard EN 61995 valid from 2009-08-24.



U718



U719

**Flush type roof DCL sockets:**  
 Flush, round DCL sockets for roof box, can be used with hook (not inside the packing), Collection thermoplastic has adopted newly developed operation. Attach screws applied in the correct mounting position c-c 67-78 mm, Fast connections for rigid conductors is up to 2.5 mm<sup>2</sup>, external dimensions: Ø110 mm. for old roof boxes with "center" pin.  
 boxes that are deeper than 40mm.

Type	Description/Remark
U718	Flush type roof DCL sockets
U719	Double flush roof DCL sockets

### DCL plugs and sockets

**Flush type wall DCL sockets:**  
 Flush, square DCL sockets for wall installation boxes and junction boxes, Collection thermoplastic has adopted newly developed operation. Fast connections for rigid conductors is up to 2.5 mm<sup>2</sup>. Support of non - leading composite material. Fits in all types of cans.  
 ETM713P: Fixing c-c 60 mm for mounting, External dimensions: 84 x 84mm, Thermoplastic center plate 55X55 mm, which fits into Etman "P" series combination plate. No visible screws. By surface fixing, please use surface house (Typed ETM240P). By surface fixing, in combination with a switch or other regulators/dimmers, please use double surface house (Typed ETM429P).  
 ETM714P: Fixing c-c 60, 67, 70 mm for mounting, external dimensions: 95 x 95mm

Type	Description/Remark
U713	Flush type wall DCL sockets, 84x84
U714	Flush type wall DCL sockets, 95x95



U713



U714

### DCL plugs and sockets

**Surface type wall DCL sockets:**  
 Surface wall mounting has integrated bottom plate, Collection thermoplastic with newly developed operation. Integrated base plate with both 16mm and 20mm knockouts. The cover has 12pcs multiple size combined knock-outs on the sides of the cover. Can be mounted on the leading surface, fixing c-c 38 mm for mounting Fast connections conductors up to 2.5 mm<sup>2</sup>, External dimensions: 65 x 65mm

Type	Description/Remark
U715	Surface type wall DCL sockets



**Spacer**  
 Ø110 mm, H=10mm  
 For ETM710P Flush type roof DCL sockets possible mounting in 32mm deep roof box

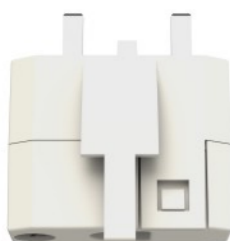
Type	Description/Remark
U711	Spacer for flush type wall DCL sockets



### DCL plugs and sockets



U721



U722



U721 Black



U722 Black

#### DCL rewirable plug

Rewirable.

With straight cable connection.

Screw terminals, for flexible conductor up to 1.5mm<sup>2</sup>.

With cable fixation screw, for external dimensions of flexible cables up to Ø8.0mm.

Type	Description/Remark
U721	DCL plug, rewirable
U722	DCL plug, rewirable, without earth

#### DCL plug with cable

Non-rewirable.

DCL is a new plug and socket system for the connection of fixed lighting equipment, related standard EN 61995 valid from 2009-08-24.

Straight cable entry.

Type	Description/Remark
U723	Plug with cable H03VV-F 3G0.75mm <sup>2</sup> /0.155M, with earth
U724	Plug with cable H03VVH2-F 2X0.75mm <sup>2</sup> /0.155M, without earth



U723



U724



U723+4M



U724+4M

#### DCL plug with E27 lamp holder

**Technical Data:** 6A 250V~

**Frequency:** 50Hz

**IP-Class:** Ip20

**Certificate(s):** CE, Semko

**Product info:**

DCL is a new plug and socket system for the connection of fixed lighting equipment, related standard EN 61995 valid from 2009-08-24.

Portable.

0.1M H03VVH2-F 2x0.75mm<sup>2</sup> VDE cable.

Type	Description/Remark
U724+E27	DCL plug with E27 lamp holder, cable 0.1M



### Portable DCL Socket



U717

**Technical Data:** 6A 250V~  
**Frequency:** 50Hz  
**Colour:** White and Black  
**Main material:** PC (Halogen free)  
**IP-Class:** IP20  
**Working temperature:** -25°Cto +60°C  
**Installation temperature:** -5°Cto +25°C  
**Fire hazard test:** 650°C/750°C (IEC60695-2-11)  
**The product complies with the standard(s):** EN61995-1: Standard, EN61995-2: Standard sheets  
**The product is in conformity with the provisions of the following European directive(s):**  
 LVD (Low Voltage Directive)  
 RoHS Directive  
 WEEE Directive  
 REACH Directive  
**Certificate(s):** CE, S-Mark  
**Quality management system according to:** ISO 9001  
**Environmental management system:** ISO 14001  
**Occupational Health and Safety Management System:** ISO 45001  
**Product info:**  
 DCL is a new plug and socket system for the connection of fixed lighting equipment, related standard EN 61995 valid from 2009-08-24.  
 Rewirable. Straight cable entry.  
 Screw terminals, for flexible conductor up to 1.5mm<sup>2</sup>.  
 With cable fixation screw, for external dimensions of flexible cables up to Ø8.0mm.

Type	Description/Remark
U717	Rewirable DCL Socket, Portable, 6A 250V~

## Lamp plug and sockets

**Technical Data:** 6A 250VAC  
**IP-Class:** IP20  
**Certificate(s):** CE, Semko

### Flush type roof lamp sockets

Flush, round lamp sockets for roof box, with suspension hook, Collection thermoplastic with newly developed operation. Speed Connections with the lever of dismantling of the leaders. Attach Screws applied in the correct mounting position c-c 70-78 mm, Lever for easy dismantling of conductors, Fast connections conductors up to 2.5 mm<sup>2</sup>, External dimensions: Ø110 mm

Type	Description/Remark
U371-1	Lamp socket , 2 pol without earth , with pothook
U371-2	Lamp socket , 3-pol , with pothook



U371-1

### Surface type roof lamp sockets

Surface, round lamp sockets ,mounting directly in the ceiling, with demountable suspension hook. Collection thermoplastic with newly developed operation with fast connections, lever of dismantling of the leaders. Can also be mounted on an existing takdosa. Fixing c-c 70-78 mm for mounting, Fast connections conductors up to 2.5 mm<sup>2</sup>, External dimensions: Ø110 mm

Type	Description/Remark
U373-1	Lamp socket , 2 pol without earth , with slot
U373-2	Lamp socket , 3-pol , with slot



U373-1

## Lamp plug and sockets

### Surface type wall lamp sockets



U372-1

Surface wall mounting has integrated bottom plate, Collection thermoplastic with newly developed operation. Speed Connections with the lever of dismantling of the leaders. Integrated base plate with many attachment options facilitates fitting not to trim. Can be mounted on the leading surface  
Fast connections conductors up to 2.5 mm<sup>2</sup>, External dimensions: 65 x 65mm

Type	Description/Remark
U372-1	Lamp socket, 2 pol ,without earth, surface-type
U372-2	Lamp socket, 3 pol , 3-pol , surface-type

## Lamp plug and sockets

This series also includes:  
- lamp sockets for cable installation

Type	Description/Remark
U377	Without earth



U377

- Lamp plugs with side cable connection

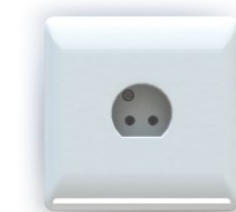
Type	Description/Remark
U375	Earthed
U378	Without Earth



U375



U378

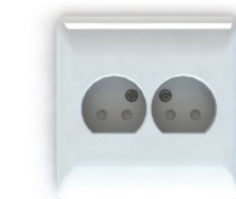


U570-1

### Flush type wall lamp sockets

Flush, square lamp sockets for wall mounting the device and junction boxes, Collection thermoplastic with newly developed operation. Speed Connections with the lever of dismantling of the leaders. Support of non - leading composite material. Fits in all types of cans. Fixing c-c 60, 67, 70 mm for mounting, fast connections conductors up to 2.5 mm<sup>2</sup>, External dimensions: 95 x 95mm

Type	Description/Remark
U570-1	Lamp socket , 2 pol , without earth
U579	2-way Lamp socket , 2 pol , without earth



U579

## Lamp plug and sockets

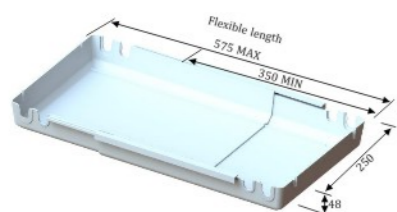
### Downlight box



For downlights and related accessories, the box with four fixed 16mm entries, locking springs, sealing plug included. The box with four 16mm and two 20mm knockout also, you can open it when you need.

Type	Description/Remark
B608	Downlight box
B609	Downlight box with tape

### For LED Downlight



Size: 350-575\*230/250\*48mm  
 Halogen-free  
 850°C glow wire  
 2 screw markings on two short sides  
 Four 16mm and 20mm open inlets for flex-tube directly  
 Operating temperature range: -25°C to +90°C

Type	Description/Remark
B671	For LED downlight

### Lamp holder



#### E14

Art.No.	Type	Description/Remark
86300110	863001	white
86300120	863001	black

#### E27



Art.No.	Type	Description/Remark
86300210	863002	white
86300220	863002	black

## Accessories

### Ring for E14/E27



Art.No.	Type	Description/Remark
86300710	863007	white
86300720	863007	black

### Lamp holder



#### Cable fixer

Art.No.	Type	Description/Remark
86400110	864001	white
86400211	864002	black



#### Cable fixer

Art.No.	Type	Description/Remark
86400310	864003	white
86400411	864004	black



#### Cable fixer set

Art.No.	Type	Description/Remark
86400210	864002	2 pcs plastic tension release with inner thread 5 pcs hexagonal nut M10x1 2 pcs thread pipe M10x1 h.15mm 2 pcs thread pipe M10x1 h.50mm

## Accessories

### Lamp holder

#### Ceiling cup



Art.No.	Type	Description/Remark
86600110	866001	Ceiling cup, Dia.145mm

#### Cable handle



Art.No.	Type	Description/Remark
86400501		Cable handle

#### Rewirable Switches

2(1)A 250V ~  
1-pol



Art.No.	Type	Description/Remark
83505010	ACS1001	White
83505011	ACS1001	Black
83506010	ACS1001	Silver
83507010	ACS1001	Brass
83509010	ACS1001	Grey

### Lamp plugs and sockets with cable

Art.No.	Type	Description/Remark
86212112	I17	Lamp plug without earth with cable H03VVH2-F 2x0.75mm <sup>2</sup> 0.2M
86212113	I17	Lamp plug without earth with cable H03VVH2-F 2x0.75mm <sup>2</sup> 2.0M
86212114	I17	Lamp plug without earth with cable H03VVH2-F 2x0.75mm <sup>2</sup> 2.2M
86212115	I17	Lamp plug without earth with cable H03VVH2-F 2x0.75mm <sup>2</sup> 3.0M
86212010	I18	Lamp plug earthed with cable H03VV-F 3Gx0.75mm <sup>2</sup> 0.11M
86212011	I18	Lamp plug earthed with cable H03VV-F 3Gx0.75mm <sup>2</sup> 0.155M
86212012	I18	Lamp plug earthed with cable H03VV-F 3Gx0.75mm <sup>2</sup> 0.2M
86212013	I18	Lamp plug earthed with cable H03VV-F 3Gx0.75mm <sup>2</sup> 2.0M
86212014	I18	Lamp plug earthed with cable H03VV-F 3Gx0.75mm <sup>2</sup> 2.2M
86212015	I18	Lamp plug earthed with cable H03VV-F 3Gx0.75mm <sup>2</sup> 3.0M



I17



I18

Art.No.	Type	Description/Remark
86415010	I17+U377	Lamp plug without earth with cable H03VVH2-F2X0.75MM2 3M enclosed socket without earth



I17+U377

### Lamp plug without earth with E27 lamp holder

Art.No.	Type	Description/Remark
86414010	I17+E27	Plastic lamp holder, H03VVH2-F 2x0.75mm <sup>2</sup> /0.1M
86414020	I17+E27	Plastic lamp holder, H03VVH2-F 2x0.75mm <sup>2</sup> /0.155M
86414030	I17+E27	Bakelite lamp holder, H03VVH2-F 2x0.75mm <sup>2</sup> /0.1M
86414040	I17+E27	Bakelite lamp holder, H03VVH2-F 2x0.75mm <sup>2</sup> /0.155M



## Accessories



Art.No.	Type	Description/Remark
86410010	864100	2M H03VVH2-F 2x0.75mm <sup>2</sup> cable w/Europlug
86410011	864100	2.5M H03VVH2-F 2x0.75mm <sup>2</sup> cable w/Europlug
86410012	864100	3.5M H03VVH2-F 2x0.75mm <sup>2</sup> cable w/Europlug

### Euro plug with cables & switch



Art.No.	Type	Description/Remark
86411010	864110	1.5+0.5M H03VVH2 -F 2x0.75mm <sup>2</sup> white cable w/switch
86411020	864110	1.8+0.7M H03VVH2 -F 2x0.75mm <sup>2</sup> cable w/switch
86411030	864110	1.5+0.5M H03VVH2 -F 2x0.75mm <sup>2</sup> cable w/switch
86411040	864110	1.5+3.5M H03VVH2 -F 2x0.75mm <sup>2</sup> cable w/switch
86411021	864110	1.0+2.0M H03VVH2 -F 2x0.75mm <sup>2</sup> cable w/switch

### Lamp base set



Art.No.	Type	Description/Remark
86412010	ETM244S	2M H03VVH2-F 2x0.75mm <sup>2</sup> cable w/Europlug , E14 lamp holder and fittings
86412030	ETM244S	3M H03VVH2-F 2x0.75mm <sup>2</sup> cable w/Europlug , E14 lamp holder and fittings
86412035	ETM244S	3.5M H03VVH2-F 2x0.75mm <sup>2</sup> cable w/Europlug , E14 lamp holder and fittings



Art.No.	Type	Description/Remark
86411012	864140	H03VV-F2x0.75mm <sup>2</sup> , 1m+E27 lamp holder

### Extension cord, PVC



Art.No.	Type	Description/Remark
83310220	ACPW02	H03VVH2-F 2x0.75mm <sup>2</sup> / 2M
83310230	ACPW02	H03VVH2-F 2x0.75mm <sup>2</sup> / 3M
83310250	ACPW02	H03VVH2-F 2x0.75mm <sup>2</sup> / 5M

## Rewirable Dimmer

### Product Information

The dimmer is for indoor installation, suitable for dimmable lamp drivers. Rewirable dimmer is installed on normal desks together with push button switch.

Regulated by one push button, when short press on button is ON/OFF, and long press on button is rising/lowering the brightness. One time long press is rising brightness, and next time is lowering brightness. The lamp stops at highest/lowest brightness level.

### Technical Specifications

Line input: 230VAC 50Hz

Load power: 0.5A/3-100VA

Load type: 3-100VA Incandescent lamp load

3-60VA LED RC

3-20VA LED RL

### Notes:

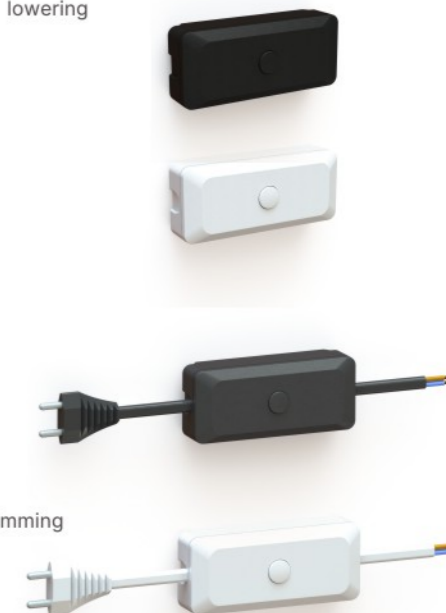
3-60VA LED RC: Dimmable LED lamp (trailing edge, RC mode),  
Dimmable LED filament (trailing edge, RC mode)

3-20VA LED RL: Dimmable LED lamp (leading edge, RL mode)  
Dimmable LED filament (leading edge, RL mode)

### Functional Description

#### Push Button

- Push button is on top side of the rewirable dimmer.
- Power on or power off by short press time (Typically <0.5S).
- Dimming by long press time (Typically >0.5S) after power on.
- Long press dimming the lamp brighter, till maximum brightness and stopped. Next long press dimming the lamp darker, till minimum brightness and stopped.



Art.No.	Type	Description/Remark
8630320	U320	Rewirable White dimmer, no cable mounted
8630321	U320	Rewirable Black dimmer, no cable mounted
8631320	U320+cable	Rewirable White dimmer with 1.2 meter white cable with EURO plug + 0.8 meter white cable
8631321	U320+cable	Rewirable Black dimmer with 1.2 meter black cable with EURO plug + 0.8 meter black cable

# Perilex Plug and Sockets



## Perilex Plug and Socket

### Surface-mounted stove socket

**Colour:** White RAL9003 (UV stable)  
**Main material:** PC  
**IP-Class:** IP20  
**Technical data:** 25A 250VAC  
**Frequency:** 50Hz  
**Certificates:** Semko  
**Conforms with:** RoHS, WEEE  
**Complies with the standards:** IEC 60884-1, CEE7X  
**Fire hazard test:** 850°C (IEC60695-2-11)  
**Working temperature:** -25°C to +60°C  
**Installation temperature:** -5°C to +25°C



Stove socket, Norwegian standard with 3 flat-pin system (2P+E). Surface-mounted type with thermoplastic cover and screw terminals. Flush wiring. Screw distance 66.7×37mm, cover plate 90×91mm. Also fits wall boxes with 60mm cc screw spacing.

Type	Description/Remark
U230S	1PCS, 100PCS

### Rewirable stove plug

**Colour:** White RAL9003 (UV stable)  
**Main material:** PC  
**IP-Class:** IP20  
**Technical data:** 25A 250VAC  
**Frequency:** 50Hz  
**Certificates:** Semko  
**Conforms with:** RoHS, WEEE  
**Complies with the standards:** IEC 60884-1, CEE7X  
**Fire hazard test:** 850°C (IEC60695-2-11)  
**Working temperature:** -25°C to +60°C  
**Installation temperature:** -5°C to +25°C



Stove plug, Norwegian standard (2P+E) with screw-type terminals and straight cable entry. Designed for reliable connection to 3 flat-pin stove sockets like ETM230S.

Type	Description/Remark
ETM229P	1PCS, 250PCS

### Surface-mounted Perilex socket



**Colour:** White RAL9003 (UV stable)

**Main material:** PC

**IP-Class:** IP20

**Technical data:** 16A 230/400VAC

**Frequency:** 50Hz

**Certificates:** Semko

**Conforms with:** RoHS, WEEE

**Complies with the standards:** EN 60884-1, DIN 49445 forms A2

**Fire hazard test:** 850°C (IEC60695-2-11)

**Working temperature:** -25°C to +60°C

**Installation temperature:** -5°C to +25°C

Surface-mounted Perilex socket with PE, N, and L1-L3 conductors. Thermoplastic cover, Pozidriv screw terminals for flush wiring (1.5–2.5mm<sup>2</sup>). Screw distance 49mm, cover plate 92×92mm. Reliable for three-phase connections.

Type	Description/Remark
ETM422P	1PCS, 75PCS

### Surface-mounted Perilex socket



**Colour:** White RAL9003 (UV stable)

**Main material:** PC

**IP-Class:** Ip20

**Technical data:** 16A 230/400VAC

**Frequency:** 50Hz

**Certificates:** Semko

**Conforms with:** RoHS, WEEE

**Complies with the standards:** EN 60884-1, DIN 49445 forms A2

**Fire hazard test:** 850°C (IEC60695-2-11)

**Working temperature:** -25°C to +60°C

**Installation temperature:** -5°C to +25°C

Surface-mounted Perilex socket with PE, N, and L1-L3 conductors. Thermoplastic cover, Pozidriv screw terminals for flush wiring (1.5–2.5mm<sup>2</sup>). Screw distance 49mm, cover plate 92×92mm. Reliable for three-phase connections.

Type	Description/Remark
ETM229P	1PCS, 110PCS

### Rewirable Perilex plug, side entry



**Colour:** White RAL9003 (UV stable)

**Main material:** PC

**IP-Class:** Ip20

**Technical data:** 16A 230/400VAC

**Frequency:** 50Hz

**Certificates:** Semko

**Conforms with:** RoHS, WEEE

**Complies with the standards:** EN 60884-1, DIN 49446

**Fire hazard test:** 850°C (IEC60695-2-11)

**Working temperature:** -25°C to +60°C

**Installation temperature:** -5°C to +25°C

Rewirable Perilex plug with side cable entry and pillar-type terminals. Suitable for all wire types with connectable area of 1.5–2.5 mm<sup>2</sup>. Designed for secure, reliable connections in three-phase applications. Durable and easy to wire.

Type	Description/Remark
ETM422P	1PCS, 50PCS

### Rewirable Perilex plug, straight entry



**Colour:** White RAL9003 (UV stable)  
**Main material:** PC  
**IP-Class:** Ip20  
**Technical data:** 16A 230/400VAC  
**Frequency:** 50Hz  
**Certificates:** Semko  
**Conforms with:** RoHS, WEEE  
**Complies with the standards:** EN 60884-1, DIN 49446  
**Fire hazard test:** 850°C (IEC60695-2-11)  
**Working temperature:** -25°C to +60°C  
**Installation temperature:** -5°C to +25°C

Rewirable Perilex plug with straight cable entry and pillar-type terminals. Suitable for all wire types with a connectable area of 1.5–2.5 mm<sup>2</sup>. Designed for secure, reliable connections in three-phase applications. Durable and easy to wire.

Type	Description/Remark
ETM423S	1PCS

### Rewirable Perilex plug with H05VV-F4G1.5mm<sup>2</sup>



**Colour:** White RAL9003 (UV stable)  
**Main material:** PC  
**IP-Class:** Ip20  
**Technical data:** 16A 230/400VAC  
**Frequency:** 50Hz  
**Certificates:** Semko  
**Conforms with:** RoHS, WEEE  
**Complies with the standards:** EN 60884-1, DIN 49446  
**Fire hazard test:** 850°C (IEC60695-2-11)  
**Working temperature:** -25°C to +60°C  
**Installation temperature:** -5°C to +25°C

Molded Perilex plug with cable, 3P+E configuration. Fitted with H05VV-F 4G1.5 mm<sup>2</sup> cable for safe and flexible power connection. Ideal for fixed three-phase applications.

Type	Description/Remark
ETM248S	1PCS

### Oven and stove outlet combination

**Colour:** White RAL9003 (UV stable)  
**Main material:** PC  
**IP-Class:** Ip20  
**Technical data:** 16A 230/400VAC  
**Frequency:** 50Hz  
**Certificates:** Semko  
**Conforms with:** RoHS, WEEE  
**Complies with the standards:** EN 60884-1  
**Fire hazard test:** 850°C (IEC60695-2-11)  
**Working temperature:** -25°C to +60°C  
**Installation temperature:** -5°C to +25°C

It includes a 16A 250V~ Schuko socket, a junction box, and a 16A 400/230V~ Perilex socket, all prewired for convenience. The internal wiring uses H07V-R 2.5 mm<sup>2</sup> cables with brown (L1), black (L2), grey (L3), blue (N), and yellow/green (E).



Type	Description/Remark
ETM424P	1PCS, 20PCS

### Surface-mounted floor box Perilex

**Colour:** White RAL9003 (UV stable)  
**Main material:** PC  
**IP-Class:** Ip20  
**Technical data:** 16A 230/400VAC  
**Frequency:** 50Hz  
**Certificates:** Semko  
**Conforms with:** RoHS, WEEE  
**Complies with the standards:** EN 60884-1, DIN 49445 forms A2  
**Fire hazard test:** 850°C (IEC60695-2-11)  
**Working temperature:** -25°C to +60°C  
**Installation temperature:** -5°C to +25°C

Perilex socket with floor box for wooden trunkings. Doubles as junction box (max. 5 terminals), fits 12/18mm height, 44.5–62.5mm width. 60mm fixing centers. Includes bottom and side cable cut-outs. No conduit entries. Sharp corners for stability.



Type	Description/Remark
ETM689P-1	1PCS, 40PCS

# Cables and Connectors

## LV installation wires

### H07V-R

**Standard:** EN 50525-2-31  
**Voltage rating:** 450/750V  
**Operating temperature:** -150°C  
**Max. conductor temperature:** 700°C  
**Max. short-circuit temperature:** 1600°C  
**Fire classification:** Eca  
**AVCP:** System 3  
**Flame retardant:** En50575  
**Certificates:** CE, VDE, ISO 9001, ISO 14001, ISO 45001  
**Conforms with:** LVD, RoHS

H07Z1-K is a halogen-free, flame-retardant insulated installation line made of extremely low friction material with a round rigid standard copper conductor. It is suitable for electric power, lighting and internal wiring.



### Packed in polybag

Art.No.	Description/Remark
80700110	1.5mm <sup>2</sup> , Blue
80700210	1.5mm <sup>2</sup> , Black
80700310	1.5mm <sup>2</sup> , Yellow/Green
80700410	1.5mm <sup>2</sup> , Brown
80700510	1.5mm <sup>2</sup> , White
80700610	1.5mm <sup>2</sup> , Grey
80700710	1.5mm <sup>2</sup> , Orange
80701110	2.5mm <sup>2</sup> , Blue
80701210	2.5mm <sup>2</sup> , Black
80701310	2.5mm <sup>2</sup> , Yellow/Green
80701410	2.5mm <sup>2</sup> , Brown
80701510	2.5mm <sup>2</sup> , White
80701610	2.5mm <sup>2</sup> , Grey
80701710	2.5mm <sup>2</sup> , Orange
807002110	4.0mm <sup>2</sup> , Brown
80702210	4.0mm <sup>2</sup> , Blue
80702310	4.0mm <sup>2</sup> , Yellow/Green
80703110	6.0mm <sup>2</sup> , Brown
80703210	6.0mm <sup>2</sup> , Blue
80703310	6.0mm <sup>2</sup> , Yellow/Green

## H07V-K

**Standard:** EN 50525-2-31  
**Voltage rating:** 450/750V  
**Operating temperature:** -150°C  
**Max. conductor temperature:** 700°C  
**Max. short-circuit temperature:** 1600°C  
**Fire classification:** Eca  
**AVCP:** System 3  
**Flame retardant:** En50575  
**Certificates:** CE, ISO 9001, ISO 14001, ISO 45001  
**Conforms with:** LVD, RoHS

H07V-K is widely used for fixed electrical installations, flexible cords are also used as the soft connection for most domestic electrical appliances and instruments like switchboards, power distributors, etc.

### Packed in polybag

Art.No.	Description/Remark
80730001	6.0mm <sup>2</sup> , Blue
80730002	6.0mm <sup>2</sup> , Black
80730003	6.0mm <sup>2</sup> , Yellow/Green
80730004	6.0mm <sup>2</sup> , Brown
80730005	6.0mm <sup>2</sup> , White
80730006	6.0mm <sup>2</sup> , Grey
80730007	16mm <sup>2</sup> , Blue
80730008	16mm <sup>2</sup> , Black
80730009	16mm <sup>2</sup> , Yellow/Green
80730010	16mm <sup>2</sup> , Brown
80730011	16mm <sup>2</sup> , White
80730012	16mm <sup>2</sup> , Grey

## H07Z1-R

**Standard:** EN 50525-3-31  
**Voltage rating:** 450/750V  
**Operating temperature:** -150°C  
**Max. conductor temperature:** 700°C  
**Max. short-circuit temperature:** 1600°C  
**Fire classification:** Dca  
**AVCP:** System 3  
**Flame retardant:** En50575  
**Certificates:** CE, Semko, ISO 9001, ISO 14001, ISO 45001  
**Conforms with:** LVD, RoHS

H07Z1-R is a halogen-free, flame-retardant insulated installation line made of extremely low friction material with a round rigid standard copper conductor. It is suitable for electric power, lighting and internal wiring installations.

### Packed in polybag

Art.No.	Description/Remark
80708110	1.5mm <sup>2</sup> , Blue
80708210	1.5mm <sup>2</sup> , Black
80708310	1.5mm <sup>2</sup> , Yellow/Green
80708410	1.5mm <sup>2</sup> , Brown
80708510	1.5mm <sup>2</sup> , White
80708610	1.5mm <sup>2</sup> , Grey
80708710	1.5mm <sup>2</sup> , Orange
80708110	1.5mm <sup>2</sup> , Red
80709110	2.5mm <sup>2</sup> , Blue
80709210	2.5mm <sup>2</sup> , Black
80709310	2.5mm <sup>2</sup> , Yellow/Green
80709410	2.5mm <sup>2</sup> , Brown
80709510	2.5mm <sup>2</sup> , White
80709610	2.5mm <sup>2</sup> , Grey
80709710	2.5mm <sup>2</sup> , Orange
80709810	2.5mm <sup>2</sup> , Red
80709910	2.5mm <sup>2</sup> , Yellow
80710110	4.0mm <sup>2</sup> , Brown
80710210	4.0mm <sup>2</sup> , Blue
80710310	4.0mm <sup>2</sup> , Yellow/Green
80720110	6.0mm <sup>2</sup> , Brown
80720210	6.0mm <sup>2</sup> , Blue
80720310	6.0mm <sup>2</sup> , Yellow/Green

### H07Z1-U

**Standard:** EN 50525-3-31

**Voltage rating:** 450/750V

**Operating temperature:** -150°C

**Max. conductor temperature:** 700°C

**Max. short-circuit temperature:** 1600°C

**Fire classification:** Dca

**AVCP:** System 3

**Flame retardant:** En50575

**Certificates:** CE, Semko, ISO 9001, ISO 14001, ISO 45001

**Conforms with:** LVD, RoHS

H07Z1-U is a halogen-free, flame-retardant insulated installation line of extremely low friction material with a round rigid standard copper conductor. It is suitable for electric power, lighting and internal wiring.

#### Packed in polybag

Art.No.	Description/Remark
80708160	1.5mm <sup>2</sup> , Blue
80708260	1.5mm <sup>2</sup> , Black
80708360	1.5mm <sup>2</sup> , Yellow/Green
80708460	1.5mm <sup>2</sup> , Brown
80708560	1.5mm <sup>2</sup> , White
80708660	1.5mm <sup>2</sup> , Grey
80708760	1.5mm <sup>2</sup> , Orange
80709160	2.5mm <sup>2</sup> , Blue
80709260	2.5mm <sup>2</sup> , Black
80709360	2.5mm <sup>2</sup> , Yellow/Green
80709460	2.5mm <sup>2</sup> , Brown
80709560	2.5mm <sup>2</sup> , White
80709660	2.5mm <sup>2</sup> , Grey
80709760	2.5mm <sup>2</sup> , Orange
80710160	4.0mm <sup>2</sup> , Brown
80710260	4.0mm <sup>2</sup> , Blue
80710360	4.0mm <sup>2</sup> , Yellow/Green
80710160	6.0mm <sup>2</sup> , Brown
80710260	6.0mm <sup>2</sup> , Blue
80710360	6.0mm <sup>2</sup> , Yellow/Green

### H07V-U

**Standard:** EN 50525-2-31

**Voltage rating:** 450/750V

**Operating temperature:** -150°C

**Max. conductor temperature:** 700°C

**Max. short-circuit temperature:** 1600°C

**Fire classification:** Eca

**AVCP:** System 3

**Flame retardant:** En50575

**Certificates:** CE, ISO 9001, ISO 14001, ISO 45001

**Conforms with:** LVD, RoHS

H07V-U is a PVC, flame-retardant insulated installation line of extremely low friction material with a solid bare copper single conductor. It is suitable for electric power, lighting and internal wiring installations.

#### Packed in polybag

Art.No.	Description/Remark
80730013	1.5mm <sup>2</sup> , Blue
80730014	1.5mm <sup>2</sup> , Brown
80730015	1.5mm <sup>2</sup> , Yellow/Green
80730016	1.5mm <sup>2</sup> , Blue
80730017	2.5mm <sup>2</sup> , Brown
80730018	2.5mm <sup>2</sup> , Yellow/Green

## H07Z1-K

**Standard:** EN 50525-3-31

**Voltage rating:** 450/750V

**Operating temperature:** -150°C

**Max. conductor temperature:** 700°C

**Max. short-circuit temperature:** 1600°C

**Fire classification:** Dca

**AVCP:** System 3

**Flame retardant:** En50575

**Certificates:** CE, VDE, ISO 9001, ISO 14001, ISO 45001

**Conforms with:** LVD, RoHS

### Packed in polybag

Art.No.	Description/Remark
80708110	6.0mm <sup>2</sup> , Red
80708210	6.0mm <sup>2</sup> , Yellow
8073041	6.0mm <sup>2</sup> , Black
8073042	6.0mm <sup>2</sup> , Grey
8073043	6.0mm <sup>2</sup> , Blue
8073044	6.0mm <sup>2</sup> , Brown
8073045	6.0mm <sup>2</sup> , Yellow/Green
80730021	10mm <sup>2</sup> , Red
80730022	10mm <sup>2</sup> , Yellow
80730023	10mm <sup>2</sup> , Blue
80730024	10mm <sup>2</sup> , Black
80730025	10mm <sup>2</sup> , Green
80730026	10mm <sup>2</sup> , Brown
80730027	10mm <sup>2</sup> , Yellow/Green
80730028	10mm <sup>2</sup> , White
80730029	10mm <sup>2</sup> , Grey
80730030	10mm <sup>2</sup> , Orange
80730031	16mm <sup>2</sup> , Red
80730032	16mm <sup>2</sup> , Yellow
80730033	16mm <sup>2</sup> , Blue
80730034	16mm <sup>2</sup> ,Black
80730035	16mm <sup>2</sup> ,Green
80730036	16mm <sup>2</sup> ,Brown
80730037	16mm <sup>2</sup> , Yellow/Green
80730038	16mm <sup>2</sup> , White
80730039	16mm <sup>2</sup> , Grey
80730040	16mm <sup>2</sup> , Orange

## H05VV-F

**Standard:** EN 50525-2-11

**Voltage rating:** 300/500V

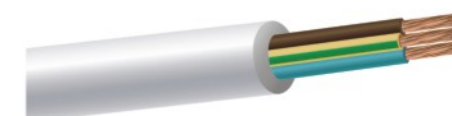
**Operating temperature:** 00°C- +700°C

**AVCP:** System 3

**Flame retardant:** En50575

**Certificates:** VDE, ISO 9001, ISO 14001, ISO 45001

**Conforms with:** LVD, RoHS



### Packed in polybag

Art.No.	Description/Remark	Sheath
80800007	2x1.0mm <sup>2</sup> , brown, blue	white
80800008	3G0.75mm <sup>2</sup> , brown, blue, yellow/green	orange*
80800009	3G0.75mm <sup>2</sup> , brown, blue, yellow/green	blue*
80800010	3G0.75mm <sup>2</sup> , brown, blue, yellow/green	transparent
80800011	3G0.75mm <sup>2</sup> , brown, blue, yellow/green	black
80800012	3G0.75mm <sup>2</sup> , brown, blue, yellow/green	yellow
80800013	3G0.75mm <sup>2</sup> , brown, blue, yellow/green	grey
80800014	3G0.75mm <sup>2</sup> , brown, blue, yellow/green	white
80800015	3G1.0mm <sup>2</sup> , brown, blue, yellow/green	orange*
80002001	3G1.0mm <sup>2</sup> , brown, blue, yellow/green	black
80800017	3G1.0mm <sup>2</sup> , brown, blue, yellow/green	light grey
80002000	3G1.0mm <sup>2</sup> , brown, blue, yellow/green	white
80800019	3G1.0mm <sup>2</sup> , brown, blue, yellow/green	silvery
80800020	3G1.0mm <sup>2</sup> , brown, blue, yellow/green	orange
80800021	3G1.0mm <sup>2</sup> , brown, blue, yellow/green	green*
80800022	3G1.0mm <sup>2</sup> , brown, blue, yellow/green	transparent
80800023	3G1.0mm <sup>2</sup> , brown, blue, yellow/green	yellow
80800024	3G1.0mm <sup>2</sup> , brown, blue, yellow/green	grey
80800025	3G1.0mm <sup>2</sup> , brown, blue, yellow/green	blue
80002101	3G1.5mm <sup>2</sup> , brown, blue, yellow/green	black
80800027	3G1.5mm <sup>2</sup> , brown, blue, yellow/green	yellow
80800028	3G1.5mm <sup>2</sup> , brown, blue, yellow/green	orange*
80800029	3G1.5mm <sup>2</sup> , brown, blue, yellow/green	blue*
80002100	3G1.5mm <sup>2</sup> , brown, blue, yellow/green	white
80800031	3G1.5mm <sup>2</sup> , brown, blue, yellow/green	blue
80800031	3G1.5mm <sup>2</sup> , brown, blue, yellow/green	transparent
80002201	3G2.5mm <sup>2</sup> , brown, blue, yellow/green	black
80002200	3G2.5mm <sup>2</sup> , brown, blue, yellow/green	white
80002300	3G4.0mm <sup>2</sup> , brown, blue, yellow/green	white
80002301	3G1.5mm <sup>2</sup> , brown, blue, yellow/green	black
80800035	5G4.0mm <sup>2</sup> , brown, blue, black, grey, yellow/green	white

### H03VV-F

**Standard:** EN 50525-2-11

**Voltage rating:** 300/500V

**Operating temperature:** 00°C- +700°C

**AVCP:** System 3

**Flame retardant:** En50575

**Certificates:** VDE, ISO 9001, ISO 14001, ISO 45001

**Conforms with:** LVD, RoHS

H03VV-F is a PVC, flame-retardant insulated installation line of extremely low friction material with multiple standard of bare copper conductor. Suitable for medium and light mobile electrical appliances, instruments, household appliances, power lighting, and other flexible applications.

#### Packed in polybag

Art.No.	Description/Remark	Sheath
80800001	3G0.75mm <sup>2</sup> , brown, blue, yellow/green	Black
80003000	3G0.75mm <sup>2</sup> , brown, blue, yellow/green	White

### H03VVH2-F

**Standard:** EN 50525-2-11

**Voltage rating:** 300/500V

**Operating temperature:** 00°C- +700°C

**AVCP:** System 3

**Flame retardant:** En50575

**Certificates:** VDE, ISO 9001, ISO 14001, ISO 45001

**Conforms with:** LVD, RoHS

H03VVH2-F is a PVC, flame-retardant insulated installation line of extremely low friction material with multiple standard of bare copper conductor. Suitable for medium and light mobile electrical appliances, instruments and household appliances.

#### Packed in polybag

Art.No.	Description/Remark	Sheath
80000400	2x0.75mm <sup>2</sup> , brown, blue	Black
80000500	2x0.75mm <sup>2</sup> , brown, blue	White
80001700	2x0.75mm <sup>2</sup> , brown, blue	Gold
80000600	2x0.75mm <sup>2</sup> , brown, blue	Silvery
80000700	2x0.75mm <sup>2</sup> , brown, blue	Brass

### H05VVH2-F

**Standard:** EN 50525-2-11

**Voltage rating:** 300/500V

**Operating temperature:** 00°C- +700°C

**AVCP:** System 3

**Flame retardant:** En50575

**Certificates:** VDE, ISO 9001, ISO 14001, ISO 45001

**Conforms with:** LVD, RoHS

H05VVH2-F is a PVC, flame-retardant insulated installation line of extremely low friction material with multiple standard of bare copper conductor. Suitable for medium and light mobile electrical.

#### Packed in polybag

Art.No.	Description/Remark	Sheath
80800036	2x1.0mm <sup>2</sup> , brown, blue	Black
80800037	2x1.0mm <sup>2</sup> , brown, blue	White

### Tp90

**Standard:** EN 50525

**Voltage rating:** 300/500V

**Operating temperature:** 00°C- +900°C

**Flame retardant:** En50575

**Certificates:** CE, ISO 9001, ISO 14001, ISO 45001

**Conforms with:** LVD, RoHS

Tp90 is a halogen-free, double-insulated portable cable rated for 90°C, ideal for indoor low-voltage installations. Its flexible design makes it perfect for connecting halogen lamps, downlights, solar panel systems, and speaker setups, ensuring maximum safety and efficiency.

#### Packed in polybag

Art.No.	Description/Remark	Sheath
81009015	2x1.5mm <sup>2</sup> , brown, blue	White
81009025	2x1.5mm <sup>2</sup> , brown, blue	White

### MMJ/PFXP/EKK

**Standard:** EN 50525/ NEK 535/ SFS 2091

**Operating temperature:** 00°C- +700°C

**AVCP:** System 3

**Certificates:** CE, ISO 9001, ISO 14001, ISO 45001

**Voltage rating:** 300/500V

**Fire classification:** Eca

**Flame retardant:** En50575

**Conforms with:** LVD, RoHS

MMJ/PFXP/EKK is a lead-free PVC insulated and PVC sheathed house wiring cable with circular, solid copper conductors, the cable is double insulated. It is suitable for fixed surface and flush-mounted installations indoors and outdoors, and installation in slots and pipes. Not suitable for installation directly in ground or directly in concrete without protective ducting. Direct sunlight (UV) may slightly alter the colour of the sheath.

#### Packed in polybag

Art.No.	Description/Remark	Sheath
80900001	3G1.5mm <sup>2</sup> , brown, blue, yellow/green	Black/White
80900002	3G2.5mm <sup>2</sup> , brown, blue, yellow/green	Black/White
80900003	5G1.5mm <sup>2</sup> , brown, blue, yellow/green	Black/White
80900004	5G2.5mm <sup>2</sup> , brown, blue, yellow/green	Black/White

### H05RR-F

**Standard:** EN 50525-2-21

**Operating temperature:** -350C- +550C

**Certificates:** VDE, ISO 9001, ISO 14001, ISO 45001

**UV resistant:** yes

**Voltage rating:** 300/500V

**Flame retardant:** IEC 60332-1

**Conforms with:** LVD, RoHS

H05RR-F is an oil and grease resistant flexible cable, durable against high temperature, moisture and frost. This cable can be used in refrigerating installations. It can also be buried but with extra mechanical protection.

#### Packed in polybag

Art.No.	Description/Remark	Sheath
80600210	3Gx1.0mm <sup>2</sup> , brown, blue, yellow/green	Black
80600010	3Gx1.5mm <sup>2</sup> , brown, blue, yellow/green	Black
80600110	3Gx2.5mm <sup>2</sup> , brown, blue, yellow/green	Black
80605210	3Gx1.0mm <sup>2</sup> , brown, blue, yellow/green	Red
80605010	3Gx1.5mm <sup>2</sup> , brown, blue, yellow/green	Red
80605110	3Gx2.5mm <sup>2</sup> , brown, blue, yellow/green	Red
80605310	3Gx1.0mm <sup>2</sup> , brown, blue, yellow/green	Blue
80605410	3Gx1.5mm <sup>2</sup> , brown, blue, yellow/green	Blue
80605510	3Gx2.5mm <sup>2</sup> , brown, blue, yellow/green	Blue

### H07RN-F

**Standard:** EN 50525-2-21

**Voltage rating:** 450/750V

**Operating temperature:** -350°C- +550°C

**Flame retardant:** IEC 60332-1

**Certificates:** VDE, ISO 9001, ISO 14001, ISO 45001

**Conforms with:** LVD, RoHS

**UV resistant:** yes

H07RN-F is an oil and grease resistant flexible cable, durable against high temperature, moisture and frost. This cable can be used in refrigerating installations. It can also be buried but with extra mechanical protection.

#### Packed in polybag

Art.No.	Description/Remark	Sheath	Art.No.	Description/Remark	Sheath
80601710	2x1.0mm <sup>2</sup> , brown, blue	Black	80606310	4Gx4.0mm <sup>2</sup> , brown, black, yellow/green	Red
80601810	2x1.5mm <sup>2</sup> , brown, blue	Black	80606410	4Gx6.0mm <sup>2</sup> , brown, black, yellow/green	Red
80601910	3Gx1.0mm <sup>2</sup> , brown, blue, yellow/green	Black	80606510	5Gx1.5mm <sup>2</sup> , brown, blue, black, yellow/green	Red
80601010	3Gx1.5mm <sup>2</sup> , brown, blue, yellow/green	Black	80607010	5Gx2.5mm <sup>2</sup> , brown, blue, black, yellow/green	Red
80601110	3Gx2.5mm <sup>2</sup> , brown, blue, yellow/green	Black	80607110	5Gx4.0mm <sup>2</sup> , brown, blue, black, yellow/green	Red
80602010	4Gx1.5mm <sup>2</sup> , brown, black, yellow/green	Black	80607210	5Gx6.0mm <sup>2</sup> , brown, blue, black, yellow/green	Red
80601210	4Gx2.5mm <sup>2</sup> , brown, black, yellow/green	Black	80607310	5Gx16.0mm <sup>2</sup> , brown, blue, black, yellow/green	Red
80601310	4Gx4.0mm <sup>2</sup> , brown, black, yellow/green	Black	80607410	2x1.0mm <sup>2</sup> , brown, blue	Blue
80601410	4Gx6.0mm <sup>2</sup> , brown, black, yellow/green	Black	80607510	2x1.5mm <sup>2</sup> , brown, blue	Blue
80601510	5Gx1.5mm <sup>2</sup> , brown, blue, black, yellow/green	Black	80607610	3Gx1.0mm <sup>2</sup> , brown, blue, yellow/green	Blue
80601610	5Gx2.5mm <sup>2</sup> , brown, blue, black, yellow/green	Black	80607710	3Gx1.5mm <sup>2</sup> , brown, blue, yellow/green	Blue
80602110	5Gx4.0mm <sup>2</sup> , brown, blue, black, yellow/green	Black	80607810	3Gx2.5mm <sup>2</sup> , brown, blue, yellow/green	Blue
80602210	5Gx6.0mm <sup>2</sup> , brown, blue, black, yellow/green	Black	80607910	4Gx1.5mm <sup>2</sup> , brown, black, yellow/green	Blue
80602310	5Gx16.0mm <sup>2</sup> , brown, blue, black, yellow/green	Black	80608010	4Gx2.5mm <sup>2</sup> , brown, black, yellow/green	Blue
80606610	2x1.0mm <sup>2</sup> , brown, blue	Red	80608110	4Gx4.0mm <sup>2</sup> , brown, black, yellow/green	Blue
80606710	2x1.5mm <sup>2</sup> , brown, blue	Red	80608210	4Gx6.0mm <sup>2</sup> , brown, black, yellow/green	Blue
80606810	3Gx1.0mm <sup>2</sup> , brown, blue, yellow/green	Red	80608310	5Gx1.5mm <sup>2</sup> , brown, blue, black, yellow/green	Blue
80606010	3Gx1.5mm <sup>2</sup> , brown, blue, yellow/green	Red	80608410	5Gx2.5mm <sup>2</sup> , brown, blue, black, yellow/green	Blue
80606110	3Gx2.5mm <sup>2</sup> , brown, blue, yellow/green	Red	80608510	5Gx4.0mm <sup>2</sup> , brown, blue, black, yellow/green	Blue
80606910	4Gx1.5mm <sup>2</sup> , brown, black, yellow/green	Red	80608610	5Gx6.0mm <sup>2</sup> , brown, blue, black, yellow/green	Blue
80606210	4Gx2.5mm <sup>2</sup> , brown, black, yellow/green	Red	80608710	5Gx16.0mm <sup>2</sup> , brown, blue, black, yellow/green	Blue

## LAN Cables

### Cat 5e Cables

#### Description

Category 5e cables are the standard 100MHz. Manufactured in accordance with TIA 568-B and IEC 61156-5, they are suitable for basic voice & data installations.

#### U/UTP construction

#### Complies to latest cat 5e standards

Supports Gigabit Ethernet      Guaranteed performance to 100MHz

Single foil offers EMC performance

**Standards** International: ISO/IEC 11801

#### Performance

Category 5e cables are compliant with the requirements of the TIA 568-B and IEC 61156-5.

#### Electrical Performance

all values are specified at 20°C

Frequency	Attenuation dB/100m	NEXT dB	ACR dB/100m	PS NEXT (*) dB	ELFEXT dB/100m	PSELFEXT dB/100m	RL dB
4	4.1	56.3	52.2	53.3	51.7	49.0	23.0
10	6.5	50.3	43.8	47.3	43.8	41.0	25.0
16	8.3	47.2	38.9	44.3	39.7	36.9	25.0
20	9.3	45.8	36.5	42.8	37.7	35.0	25.0
31.25	11.7	42.9	31.2	39.9	33.9	31.1	23.6
62.5	17.0	38.4	21.4	35.4	27.9	25.1	21.5
100	22.0	35.3	13.3	32.3	23.8	21.0	20.1

(\*) Dual cable versions additionally comply to the additional PSNEXT requirements for multi-unit cables as specified in the relevant TIA and IEC cable standards.

Art.No.	Type of cable	Sheath colour	Length (m)	Packaging
80101210	U/UTP	Grey	305	Box

### Cat 6 Cables

**Description:** Cat 6 cables are manufactured and tested to the latest Category 6 specifications.

#### Unshielded construction

Complies to the latest Category 6 standards      Central cross maintains geometry and performance

Supports Class E applications up to 250 MHz.

**Standards** International: ISO/IEC 11801

**Design:**The conductors are 24 AWG solid copper wires complying with IEC 60228. The PE central cross filler keeps the pairs in place and reduces the risks of losing performance when bending the cable.

**Performance:**Cat 6 cables are compliant with the requirements of the TIA 568-B.2-1 and ISO/IEC 11801:2002.

**Installation:** Thanks to their small nominal outer diameter, Cat 6 cables are as easy to install as their Cat 5e equivalent.

#### Channel Performance

Values given for 2-connector channel, built with Essential-6 cable, outlet and patch panel.

Frequency Mhz	Insertion Loss dB/100m	NEXT PP dB	PS NEXT dB	ACR dB/100m	PS ACR dB/100m	ELFEXT dB/100m	PSELFEXT dB/100m	Return Loss dB
1	4.0	65.0	62.0	65.0	62.0	63.3	60.3	19.0
4	4.2	63.0	60.5	58.9	56.4	51.2	48.2	19.0
10	6.6	56.6	54.0	50.0	47.4	43.3	40.3	19.0
16	8.3	53.2	50.6	44.9	42.3	39.2	36.2	18.0
20	9.3	51.6	49.0	42.3	39.7	37.2	34.2	17.5
31.25	11.7	48.4	45.7	36.7	34.0	33.4	30.4	16.5
62.5	16.9	43.4	40.6	26.5	23.7	27.3	24.3	14.0
100	21.7	39.9	37.1	18.2	15.4	23.3	20.3	12.0
155	27.6	36.7	33.8	9.1	6.2	19.5	16.5	10.1
200	31.7	34.8	31.9	3.1	0.1	17.2	14.2	9.0
250	35.9	33.1	30.2	-2.8	-5.8	15.3	12.3	8.0

All values are specified at 20°C.

Art.No.	Type of cable	Sheath colour	Length (m)	Packaging
80101310	U/UTP	Orange	305	Box

### Speaker wires

Speaker wire is used to make the electrical connection between loudspeakers and audio amplifiers. Conductors insulated by transparent PVC. Multi stranded copper conductors

#### Characteristics

Construction characteristics

Conductor flexibility: Flexible class 5

Conductor material: Bare annealed copper

Outer sheath: PVC    Screen: No    Halogen free: No

Dimensional characteristics

Number of cores: 2

Usage characteristics

Packaging: 100M/reel, other length available

Ambient installation temperature, range: 0 .. 50°C

Operating temperature, range: 0 .. 70°C

#### Maximum wire lengths for two conductor copper wire

Cross section (mm <sup>2</sup> )	2Ωload	4Ωload	6Ωload	8Ωload
0.75 mm <sup>2</sup>	1.5 m	3 m	4.5 m	6 m
1.0 mm <sup>2</sup>	2.4 m	14.9 m	7.3 m	9.7 m
1.5 mm <sup>2</sup>	3.6 m	7.3 m	11 m	15 m

Art.No.	Cross section (mm <sup>2</sup> )	Packaging
80300010	2×1.5	100M/reel
80300500	2×2.5	100M/reel
80300600	2×4.0	100M/reel

## Connectors

### Quick connector

#### ET980-2

Connecting device, terminal with screwless-type clamping units  
number of pole: 2  
rated connection capacity: 0,5-4.0mm<sup>2</sup>  
450V 32A

#### ET980-4

Connecting device, terminal with screwless-type clamping units  
number of pole: 4  
rated connection capacity: 0,5-4.0mm<sup>2</sup>  
450V 32A

#### ET980-5

Connecting device, terminal with screwless-type clamping units  
number of pole: 4  
rated connection capacity: 0,5-4.0mm<sup>2</sup>  
450V 32A

### Packed in polybag

Art.No.	Description/Remark
ET980-2	10pcs/head card
ET980-4	10pcs/head card
ET980-5	10pcs/head card



### Splicing wire connector

#### ET922-2

Rated voltage : 450 V~

Rated current : 32 A

Rated connecting capacity : 4,0 mm<sup>2</sup>

Declared connectable conductors : 0,2-4,0 mm<sup>2</sup>

Ambient temperature : T85

Type of declared conductor : rigid and flexible

IP code : IP00

Description : body of thermoplastic material and provided with button devices for wire release, 2-way,10pcs



#### Packed in polybag

Art.No.	Description/Remark
ET922-2	10pcs/head card

#### ET922-3

Rated voltage : 450 V~

Rated current : 32 A

Rated connecting capacity : 4,0 mm<sup>2</sup>

Declared connectable conductors : 0,2-4,0 mm<sup>2</sup>

Ambient temperature : T85

Type of declared conductor : rigid and flexible

IP code : IP00

Description : body of thermoplastic material and provided with button devices for wire release, 3-way,10pcs



#### Packed in polybag

Art.No.	Description/Remark
ET922-3	10pcs/head card

#### ET922-5

Rated voltage : 450 V~

Rated current : 32 A

Rated connecting capacity : 4,0 mm<sup>2</sup>

Declared connectable conductors : 0,2-4,0 mm<sup>2</sup>

Ambient temperature : T85

Type of declared conductor : rigid and flexible

IP code : IP00

Description : body of thermoplastic material and provided with button devices for wire release, 5-way,10pcs



#### Packed in polybag

Art.No.	Description/Remark
ET922-5	10pcs/head card

# Installation Accessories

For Norway 

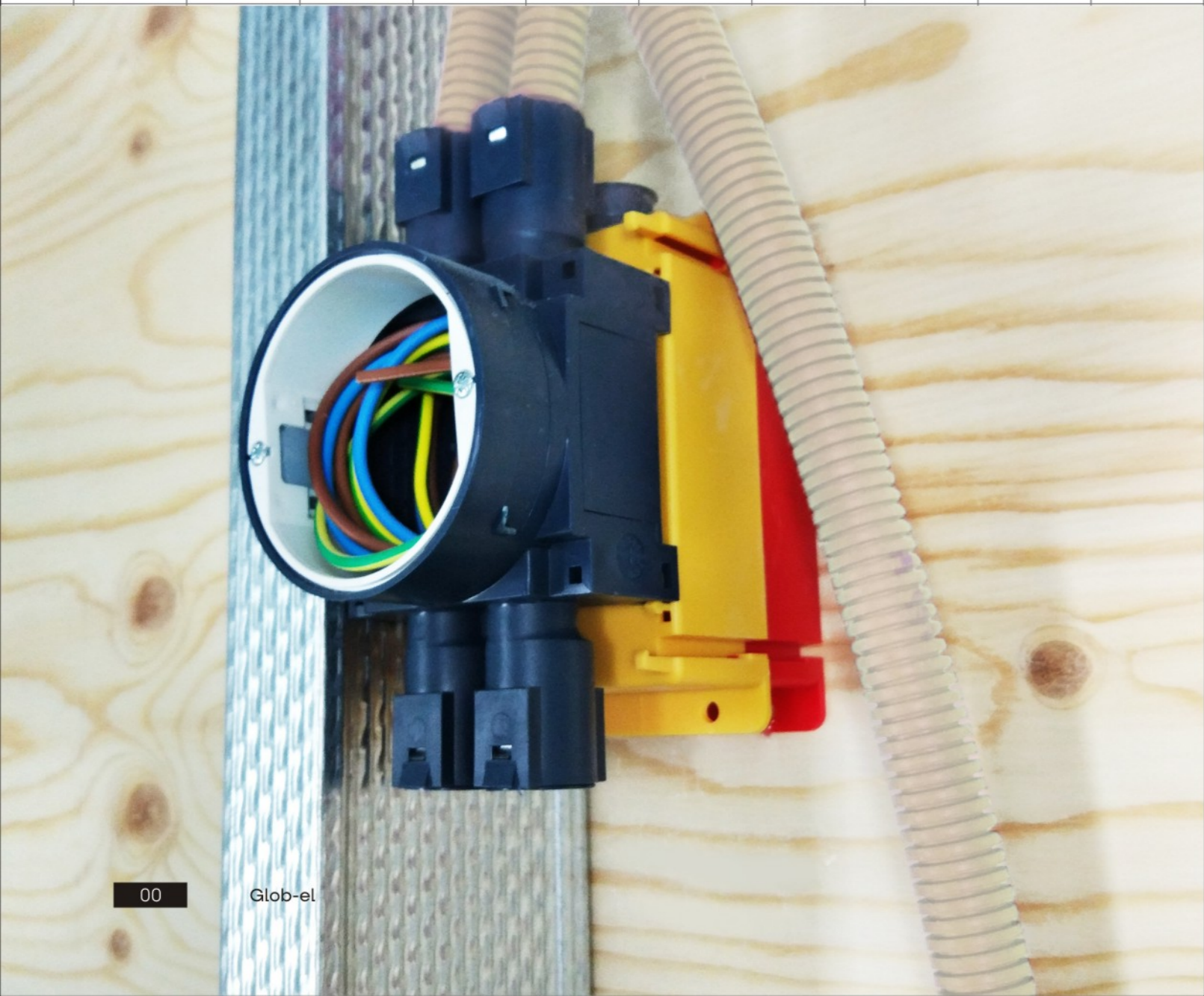
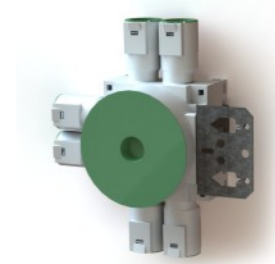
## Single way universal flush mounting wall boxes

IP-Class: IP30  
 Certificate(s): Semko, CE

For single (12-13mm) or double (24-26mm) gypsum plates.  
 Ø71mm depth 60mm.  
**Modular system:** Boxes can be ganged in comprehensive accessories.  
 Conduit entries: 2-way compatible Ø 20mm or Ø 16mm conduit, with locking springs and sealing plugs.  
 Plastic lid inclusive.  
 Two or more boxes can be connected by using different connecting pieces. B332 constructed for c-c distance of 71 mm between the boxes and B333 for c-c distance of 84 mm.  
 With Steel fastening plate, steel plate for fastening directly to wooden stanchion.  
 By double plaster used 6mm extension ring (013) that can be built on top of each other, or 12mm extension ring (543) that can be built on top of each other

### Type Table

TYPE	DESCRIPTION/REMARK
B338	For single wall plate and 3x2 combined 16/20mm inlets
B388	For double wall plate and 3x2 combined 16/20mm inlets
013	Extension ring for single wall box, H=6 mm
543	Extension ring for single wall box, H=12mm



**For Norway**

**1.5 way universal flush mounting wall boxes**



**IP-Class:** IP30

**Certificate(s):** Semko, CE

**Technical info:**

1.5 box is a very flexible wall box and designed for the low model double Schuko socket outlets. For single (12-13mm) or double (24-26mm) gypsum plates. 71\*90mm depth 60mm.

**Modular system:** Boxes can be ganged in comprehensive accessories.

With 2x2-way compatible Ø 20mm or Ø 16mm conduit entries, with locking springs and sealing plugs.

Plastic lid inclusive.

Boxes can be connected with single, one and half or double box by use of different connecting pieces: B332 constructed for c-c distance of 71 mm between the boxes and B333 for c-c distance of 84 mm.

With steel fastening plate, steel plate for fastening directly to wooden stanchions or with screws to steel stanchions.

Fixing centre 60mm and M3 screws.

By double plaster used 6mm Extension ring (617) that can be built on top of each other.

**Type Table**

TYPE	DESCRIPTION/REMARK
B613	For single wall plate, with 2x2 combined 16/20mm inlets, vertical
B614	For double wall plate, with 2x2 combined 16/20mm inlets, vertical
B615	For single wall plate, with 2x2 combined 16/20mm inlets, horizontal
B616	For double wall plate, with 2x2 combined 16/20mm inlets, horizontal
617	Extension ring for one and half wall box, H=6mm

**For Norway**

**2 way universal flush mounting wall boxes**



**IP-Class:** IP30

**Certificate(s):** Semko, CE

For single (12-13mm) or double (24-26mm) gypsum plates.

71\*142mm depth 60mm.

**Modular system:** Boxes can be ganged in comprehensive accessories.

One side with 2-way compatible Ø 20mm or Ø 16mm conduit entries, with locking springs and sealing plugs.

Another side with 3-way Ø 16mm conduit entries, with locking springs and sealing plugs

Plastic lid inclusive.

Boxes can be connected with single, one and half or another double box by use of different connecting pieces: B332 constructed for c-c distance of 71 mm between the boxes and B333 for c-c distance of 84 mm.

With or without steel fastening plate, steel plate for fastening directly to wooden stanchions or with screws to steel stanchions.

Fixing centre c-c 60mm and M3 screws, 71 mm gang distance.

By double plaster used 6mm Extension ring (547) that can be built on top of each other.

**Type Table**

TYPE	DESCRIPTION/REMARK
B610	W/steelplate for single wall plate, with 2 combined 16/20mm inlets and 3x16mm inlets
B611	W/steelplate for double wall plate, with 2 combined 16/20mm inlets and 3x16mm inlets
547	Extension ring for double wall box, H=6mm

**Accessories for universal boxes**

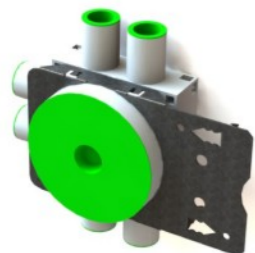
**Type Table**

TYPE	DESCRIPTION/REMARK
B332	Frame extension (71mm)
B333	Frame extension (84mm)
B384	Blind extension
B339	Extra inner ring, H=37mm



For Norway

## Flush mounting wall boxes



**IP-Class:** IP20

**Certificate(s):** Semko, CE

For single (12mm) or double (24mm) gypsum plates  
Ø71mm depth 45mm-55mm

With or without steel fastening plate, steelplate for fastening directly to wooden stanchions or with screws to steel stanchions

Turn able ring is with fixing centre 60mm and M3 screws.

The box has 6 conduit entries: 6\*Ø16mm, locking springs, sealing plugs and plastic lid. It is possible to enter Ø20mm conduit by using Ø20mm sleeve ETM 238S on the outside of the entries.

Plastic lid inclusive

Extension rings (B013) is available for the mounting boxes. It is 7 mm deep.

Type	Colour	Description/Remark
B001	White body, green sealing plugs and plastic lid	for 12mm wall plate , H=45mm
B001-2	White body, green sealing plugs and plastic lid	for 12mm wall plate , H=55mm
B001-4	White body, green sealing plugs and plastic lid	for 24mm wall plate , H=55mm
B001-1	White body, green sealing plugs and plastic lid	w/steelplate for 12mm wall plate , H=45mm
B001-3	White body, green sealing plugs and plastic lid	w/steelplate for 12mm wall plate , H=55mm
B001-5	White body, green sealing plugs and plastic lid	w/steelplate for 24mm wall plate , H=55mm
013	White	Extension ring, H=6mm

For Sweden

**IP-Class:** IP20

**Certificate(s):** SEMKO

For single (12-13mm) or double (24-26mm) gypsum plates

Ø71mm depth 50mm

Turn able ring is with fixing centre 60mm and M3 screws. The inner will be locked by locker when tightened up the screws.

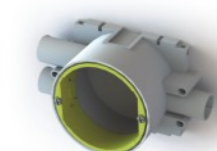
Circular flush mounting box for accessory is made of insulated materials.

With 3 inlets for Ø16mm conduit, with/without locking spring, one inlets opened and two inlets closed for keep box clean, you can open what you need by screwdriver.

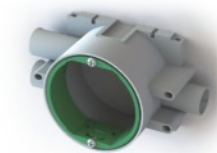
Only use for electrical wiring

The box can connect each other by locker on the side.

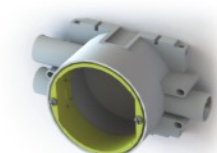
Type	Colour	Description/Remark
B520	White body ,yellow inner ring	For 26mm wall plate
B521	White body ,Green inner ring	For 13mm wall plate
B522	White body ,yellow inner ring	For 26mm wall plate, with locking spring
B523	White body ,Green inner ring	For 13mm wall plate, with locking spring



B520



B521



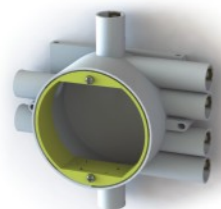
B522



B523

For Sweden

## Flush mounting Junction boxes



B524



B525



B524N



B525N

**Certificate(s):** SEMKO

**Technical info:**

For single (12-13mm) or double (24-26mm) gypsum plates  
Ø82mm depth 48mm

Turn able ring is with fixing centre 67mm and M3 screws. The inner will be locked by locker when tightened up the screws.

Circular flush mounting box for accessory is made of insulated materials.

Only be used for electrical wiring

With 8 inlets for Ø16mm conduit, with locking spring, one inlets opened and others closed for keep box clean, you can open what you need by screwdriver.

Type	Colour	Description/Remark
B524	White body, yellow inner ring	For 26mm wall plate, with locking spring
B525	White body, Green inner ring	For 13mm wall plate, with locking spring

With 2 inlets for Ø20mm conduit and 8 inlets for Ø16mm conduit, with locking spring, one inlets opened and others closed for keep box clean, you can open what you need by screwdriver.

Type	Colour	Description/Remark
B524N	White body, yellow inner ring	For 26mm wall plate, with locking spring
B525N	White body, Green inner ring	For 13mm wall plate, with locking spring

## Flush mounting roof boxes

**IP-Class:** IP30

**Certificate(s):** Semko, CE

**Technical info:**

Ø82mm depth 32mm-40mm.

Mounting screws: M4.

Distance 70 mm between inside mounting screws.

The box has 8 conduit entries: 8 X Ø16 mm, locking springs, sealing plugs and plastic lid are included. Possible to enter Ø20 mm conduit by using of Ø20 mm sleeve 238 on the outer of the entries.

Plastic lid inclusive.

Max load 15 kg.

**Type Designation:**

TYPE	DESCRIPTION/REMARK
B002	For single wall plate, with 2x2 combined 16/20mm inlets, vertical
B002-2	For double wall plate, with 2x2 combined 16/20mm inlets, vertical
B002-3	For single wall plate, with 2x2 combined 16/20mm inlets, horizontal

For Finland

## Flush mounting wall boxes

**IP-Class:** IP20

**Certificate(s):** CE

c/c 60mm

3 knock-outs on the side

2 knock-out on the bottom

2 branch outlets for Ø16, 20mm conduits

**Two kinds of conduit inlets:**

Multi-used for Ø16, 20mm conduits

strain-relief inlet, it is used in conduitless flush mounting to fasten 5 x 2,5 mm<sup>2</sup> cables to the mounting boxes or junction boxes

Art.No.	Type	Description/Remark
81020100	B602	Mounting box for flush type Apparatus with screw fixing for dry locations
81120000	B603	Ø16/20mm conduits inlet
81120100	B604	Strain-relief inlet



B602



B603



B604

## Flush mounting Junction box

c/c 78mm, M4 screws

8 knock - outs on the side

4 knock - out on the bottom

Depth: 47mm

Art.No.	Type	Description/Remark
81020000	B601	Junction box c-c 78mm for flush mounting



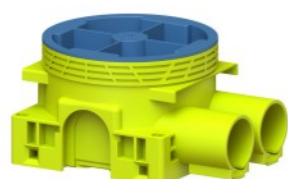
B601

For Finland

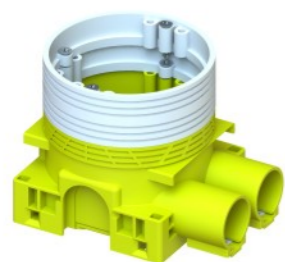
## Finnish junction boxes



ETM750S



ETM751S



ETM752S



ETM750S.LID

**IP-Class:** IP30

**Certificate(s):**

CE, Semko

**Technical info:**

Suitable for both hollow walls and concrete casting.

Diameter (mm): 71, Inside Depth/Outer height (mm): 45/48

Two or more boxes can be connected by use of different connecting pieces: ETM772S constructed for cc distance of 71 mm between the boxes.

The box has 8 screw pillars, 6 on left and right, two on up and down, with PZ1, ST2.9mm screws, c-c 60mm.

With lid (ETM750S and ETM751S).

With wings, suitable 12-13mm gypsum plate directly, possible for more places after trim the wings away.

Suitable for installation into concrete with a maximum temperature during the casting process of +90 °C.

Boxes are easy to group and install, creating an efficient platform for the installation of switches, outlets and other devices.

The mounting box can be fastened to wall studs by side nailing. Suit 3.4x3.4 nails or ST3.4 screws.

5 knock-out inlets on sides possible install related accessories of Finnish boxes from Etman and ABB.

4x Ø16mm knock-outs on the bottom possible install related accessories of Finnish boxes from Etman and ABB

Use box supports ETM773S and ETM774S secure the boxes between the boards. No further fixing of the boxes is needed; they are simply placed in their final positions when the top board layer is mounted in place.

Installation plug is used together with a screw or a nail to fasten boxes to a casting mould through the center knockout in the bottom. When the mould is disassembled, the screw or nail will follow the plywood mould and does not have to be separately removed

**Type Designation:**

TYPE	DESCRIPTION/REMARK
ETM750S	Outlet box without inlets
ETM751S	Outlet box with 2 inlets
ETM752S	Outlet box ETM751S with 2 inlets + 2 pcs mounted ETM543S 12mm rings
ETM750S.LID	LID Outlet boxes, Fit to ETM750S & ETM 751S
ST2.9x30-F-Z	Screw, 30mm, PZ1, FLAT Head

**IP-Class:** IP30

**Certificate(s):**

CE, Semko

**Technical info:**

Hollow walls and concrete casting

Ø95mm

The box has four screw pillars, two for M4 screws and two for 3.5mm universal screws, the boxes without mounting screws.

Suitable for installation into concrete with a maximum temperature during the casting process of +90 °C.

8xØ20mm inlets on sides

4 knock-out inlets on four corners

4 knock-outs on the bottom for bottom inlets Ø16mm, 1 knock-outs on the bottom for bottom inlets Ø20mm

The boxes are suited to a variety of installations when inlets, corner knock-out inlets and bottom inlets are used. Inlet for size 20mm conduit, there are side inlets for the boxes for conduit sizes 16, 20, and 25 mm, and bottom inlets for sizes 16 and 20 mm

Without lid

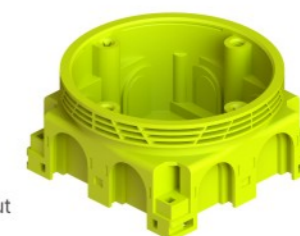
The junction boxes can be mounted in ceiling by ST3.4, ST3.9screws (only height directions) or using box supports ETM773S, ETM774S

When attaching the boxes to plywood moulds, they can either be nailed or screwed

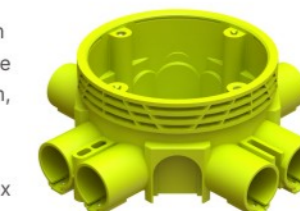
Installation plug is used together with a screw or a nail to fasten boxes to a casting mould through the center knockout in the bottom. When the mould is disassembled, the screw or nail will follow the plywood mould and does not have to be separately removed

**Type Designation:**

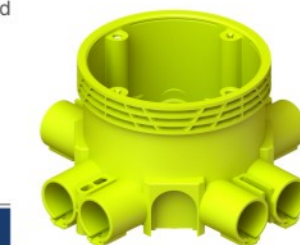
TYPE	DESCRIPTION/REMARK
ETM760S	Junction box without inlets 48mm
ETM761S	Junction box with inlets 53mm
ETM762S	Junction box with inlets 73mm
ETM763S	LID Junction boxes, c/c78. Fit to ETM760S & ETM 761S



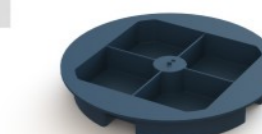
ETM760S



ETM761S



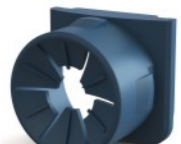
ETM762S



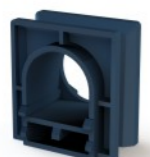
ETM763S



ETM770S



ETM771S



ETM772S



ETM773S



ETM774S

## Accessories for Finnish boxes

**Type Designation:**

TYPE	DESCRIPTION/REMARK
ETM770S	Single inlet for 20mm conduit, for all knock-out inlets on Finnish boxes
ETM771S	Strain relief inlet, for 6-11mm insulated cables, for all knock-out inlets on Finnish boxes
ETM772S	Internal connector, be used to connect mounting boxes side by side with c/c distance 71 mm
ETM773S	Box support 42-64mm , for all knock-out inlets on Finnish boxes, available length 42, 45, 64mm
ETM774S	Box support 42-95mm , for all knock-out inlets on Finnish boxes, available length 42, 45, 67, 70, 90, 95mm

## Bushing insulators

IP-Class: IP20

Certificate(s):

CE, Semko

Technical info:

Bushing insulators are used in concrete casting, for example when cabling from the space above the suspended ceiling to walls.

The bushing is fastened by nailing it to the mould. When the mould is disassembled, the nails come loose with the mould. The casting protector included with the bushing prevents the concrete from entering the conduit.

Possible connect bushing insulators to each other

Suitable nail size 2.7x2.7mm

**Type Designation**

TYPE	DESCRIPTION/REMARK
ETM777S	Bushing insulator 16mm
ETM775S	Bushing insulator 20mm
ETM776S	Bushing insulator 25mm



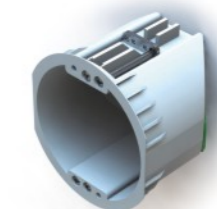
## Multi boxes

IP-Class: IP20

Technical info:

For use in prefabricated walls or hollow walls where installation works can be conducted from the outside of the wall and when you need an extra flush wall box. Requires a 6mm minimum panel-thickness.

B220 has 2 fixed entries for Ø16 mm plastic conduits, you can open one more if you want to. A special milling-cutter for drilling hole for the Multibox in a panel, diam. 69 mm (not suitable for Steel panels) can be ordered. A special effective plier to dismantle the cable inside the box, called Multiplier can also be ordered. With 2 fixed entries. Locking springs, sealing plugs and plastic lid is included. Box screw distance cc 60 mm and M3 screws.



B220

Type	Description/Remark
B220	Multibox for prefabricated walls, Ø71mm depth 61mm

Simple version, with knockout on the bottom of box, fixation screw distance c-c 60mm and M3 screws.

Type	Description/Remark
ETM390S	Wall Box & Roof Box 68mm, H=35mm
ETM391S	Wall Box & Roof Box 68mm, H=45mm
ETM392S	Wall Box & Roof Box 2 X 68mm, H=45mm
ETM593S	Wall Box & Roof Box 3 X 68mm, H=45mm



ETM390S/391S



ETM392S



ETM593S

## Accessories

### Cover, Fixing center c-c 60mm



003



540

Type	Description/Remark
003	Ø90
540	Ø90, with screw cover

### Cover, For Junction box 67mm, quick installation, no need screw



526



527

Type	Description/Remark
526	Ø100
527	Ø100, with cable entry hole

### Cover, Fixing center c-c 67mm



004-1



528

Type	Description/Remark
004-1	Ø100
528	Ø100, with cable entry hole

### Cover, Fixing center c-c 70mm



004



539

Type	Description/Remark
004	Ø100
539	Ø100, with hook

## Accessories

### Cover, Fixing center c-c 67-78mm

Type	Description/Remark
005	Ø110, with hook
541	Ø100



005



541

### Cover, Fixing center c-c 78mm

Type	Description/Remark
539-1	Ø110



539-1

### Connection cover, fixing center c-c 78mm For cables Ø 6,0 - 15,0 mm

Type	Description/Remark
ETM542S44V2	Ø100, connection cover, IP44



ETM542S44V2

## Surface mounting junction boxes

### Junction box IP20, 65\*65

**Technical Data:** 380VAC

**Rated Connecting Cap:** 2.5"

**IP-Class:** IP20

**Technical info:**

square junction box is spacious and easy to wire. The box is equipped with an insulated 5-way connector. The transparent wire connector makes it easy to ensure sufficient wire depth. The maximum wire capacity per connector is 3 x 2,5 mm<sup>2</sup> or 4 x 1,5 mm<sup>2</sup>. The box has 6 knock-outs, 2 of which are in the bottom.

Surface mounting

The minimum and maximum temperatures during installation: -5°C - +60°C



Type	Description/Remark
B219	Junction box , IP20 , 5 pol

### Junction box IP20, 90\*65

**Technical Data:** 440VAC

**Rated Connecting Cap:** 6"

**IP-Class:** IP20

**Certificate(s):** CE, Semko

**Technical info:**

Junction box has two 3-pole insulate 6 mm<sup>2</sup> connectors. The base plate offers a choice of eight different connection points for the connectors. In the bottom of the box there are four knock-outs. The cover has knock-outs in the corners and on the long sides of the cover. The maximum wire capacity per connector is 8 x 1,5 mm<sup>2</sup> or 5 x 2,5 mm<sup>2</sup>.

Surface mounting

The minimum and maximum temperatures during installation: -5°C - +60°C



Type	Description/Remark
B218	Junction box , IP20 , 6 pol

## Surface mounting junction boxes

### Junction box IP54, 82\*82

**Technical Data:** 400VAC

**Rated Connecting Cap:** Maximum 3x2.5mm<sup>2</sup>/clamp or Maximum 4x1.5mm<sup>2</sup>/clamp

**IP-Class:** IP54

**Certificate(s):** CE, Semko

**Technical info:**

square junction box is spacious and easy to wire. The box is equipped with an insulated 5-way connector. The transparent wire connector makes it easy to ensure sufficient wire depth. equipped with 8 membrane cable entries (Ø 19 mm) in the sides, In the bottom of the box there are four knock-outs.. Cables are easy to through the inlets. The maximum wire capacity per connector is 3 x 2,5 mm<sup>2</sup> or 4 x 1,5 mm<sup>2</sup>. The box has 6 knock-outs, 2 of which are in the bottom.

Surface mounting

The minimum and maximum temperatures during installation: -5°C - +60°C



Type	Description/Remark
B232	Junction box , IP54 , 5 pol
B2320	Junction box , IP54 , without terminal

### Junction box IP65

**Technical Data:** 400VAC

**Rated Connecting Cap:**

B432: 2.5"

B233: 2.5"

B434: 6"

**IP-Class:** IP65

**Certificate(s):** CE, Semko

**Technical info:**

The square junction box is equipped with 12 membrane cable entries in the sides, and two on the bottom. Cables are easy to connect by simply inserting the stripped ends through the inlets. The box locks by snapping and can be opened by inserting a screwdriver (for example) into the opening slots - no screws are needed. The box can be furnished with the strain-reliefs on the center pin.

Surface mounting

The minimum and maximum temperatures during installation: -5°C - +60°C



Type	Description/Remark
B432	Junction box, 75*75*38
B233	Junction box, 85*85*38.5
B434	Junction box, 105*105*46
B432P	Junction box, 75*75*38, with centerpin
B233P	Junction box, 85*85*38.5, with centerpin
B434P	Junction box, 105*105*46, with centerpin
B432PT	Junction box, 75*75*38, with terminal
B233PT	Junction box, 85*85*38.5, with terminal
B434PT	Junction box, 105*105*46, with terminal

## Accessories

### Flexible tube for wire fixing PE 320N

Normal in 100mtr, but you can order how long you want.



Art.No.	Description/Remark
82401610	Ø16mm tube , White , 10Mtr.
82401625	Ø16mm tube , White , 25Mtr.
82402010	Ø20mm tube , White , 10Mtr.
82402025	Ø20mm tube , White , 25Mtr.
82401660	Ø16mm tube , White , 100Mtr.
82402060	Ø20mm tube , White , 100Mtr.

### Straight extension pipe



Type	Description/Remark
237	Ø16mm, with locker
238	Ø20mm, with locker
655	Ø25mm, extension pipe
656	Ø32mm, extension pipe
657	Ø40mm, extension pipe
658	Ø50mm, extension pipe



Type	Description/Remark
237-1	Ø16mm, without locker

### Flexible tube for the cable holding



Art.No.	Description/Remark
FS1315	STEEL CABLE PULLER 15M
FS1325	STEEL CABLE PULLER 25M

### Nylon Line For Pulling Wire Through Tube



Art.No.	Description/Remark
ETM530S	10Mr. Ø3mm
ETM531S	20Mr. Ø3mm

## Accessories

### Cable Tie

#### Material:

Nylon 66, 94V-2 certified by UL, heat-resisting, erosion control, insulate well and not apt to age.

Operating temperature: -40°C to 85°C

Art.No.	Type	Description/Remark	Packaging
81501000	ETM300S	2.5x100mm , Black Colour, UV Resistant	100 pcs/bag
81501100	ETM314S	2.5x200mm , Black Colour, UV Resistant	100 pcs/bag
81501200	ETM302S	3.6x140mm , Black Colour, UV Resistant	100 pcs/bag
81501300	ETM315S	3.6x200mm , Black Colour, UV Resistant	100 pcs/bag
81501400	ETM316S	3.6x280mm , Black Colour, UV Resistant	100 pcs/bag
81501500	ETM304S	4.8x200mm , Black Colour, UV Resistant	100 pcs/bag
81501600	ETM306S	4.8x280mm , Black Colour, UV Resistant	100 pcs/bag
81501700	ETM308S	4.8x380mm , Black Colour, UV Resistant	100 pcs/bag
81501800	ETM317S	7.2x350mm , Black Colour, UV Resistant	100 pcs/bag
81501900	ETM310S	7.2x550mm , Black Colour, UV Resistant	100 pcs/bag
81502000	ETM318S	7.6x380mm , Black Colour, UV Resistant	100 pcs/bag



Art.No.	Type	Description/Remark	Packaging
81505000	ETM301S	2.5x100mm , Natural Colour	100 pcs/bag
81505100	ETM298S	2.5x200mm , Natural Colour	100 pcs/bag
81505200	ETM303S	3.6x140mm , Natural Colour	100 pcs/bag
81505300	ETM319S	3.6x200mm , Natural Colour	100 pcs/bag
81505400	ETM312S	3.6x280mm , Natural Colour	100 pcs/bag
81505500	ETM305S	4.8x200mm , Natural Colour	100 pcs/bag
81505600	ETM307S	4.8x280mm , Natural Colour	100 pcs/bag
81505700	ETM309S	4.8x380mm , Natural Colour	100 pcs/bag
81505800	ETM313S	7.2x350mm , Natural Colour	100 pcs/bag
81505900	ETM311S	7.2x550mm , Natural Colour	100 pcs/bag
81506000	ETM299S	7.6x380mm , Natural Colour	100 pcs/bag

### Cable fixture with glue

Art.No.	Type	Description/Remark	Packaging
82900110	829001	White	10 pcs/bag



### Wire holder self fasten

Art.No.	Type	Description/Remark	Packaging
82900210	829002	White	10 pcs/bag



## Accessories

### Etman Electrical Tape



1. All-weather, highly flexible, professional grade, self-adhesive PVC electrical tape
2. UL 510 flame retardant
3. CSA 22.2
4. IEC 60454-3-1-7/F-PVCP/90
5. Quick identification of electrical phases, circuits, feeders and branches
6. Primary insulation for splices up to 1000 volts
7. Can be applied at low temperatures
8. Highly resistant to sun, water, oil, acids, corrosive chemicals
9. High UV resistance

#### Specifications

**Thickness:** 0.18 mm ± 0.005mm  
**Tensile Strength:** 6.6kg/25mm  
**Elongation:** 200%  
**Adhesive to Backing:** 2.5N/10mm  
**Adhesive to Steel:** 0.34kg/19mm  
**Voltage:** 1000V  
**Heat:** -18°C to +105°C  
**Dielectric Strength:** 45KV/mm  
**Insulation:** YES  
**Material:** PVC  
**Shelf Life:** 5 years  
**Standards Meet:** RoHS  
**ELV Compliant Dir.Art.4(2):** YES  
**Hazardous goods:** NO  
**Flame Retardant:** YES

#### Type designation:

Type	Description/Remark
81701018	Black
81706018	Red
81703018	Blue
81702018	White
81709118	Brown
81708018	Green/Yellow1

### Box of Cable Fixer

Art.No.	Type	Content	Quantity/box
81803010	ETM255S-1	Cable clips white for cable 4-6mm	25
		Tap white	3
		Cable clips white for cable 3-5mm	50
		Cable ties white 8x199mm	20
		Plastic cable clip for wall 31,5x25,5mm white, self-adhesive	4
		Plastic cable clip bxlxh 12x17x8mm white, self-adhesive	10



### Cable Clips Set

Art.No.	Type	Quantity/box
81804010	ETM018S	270
	ETM258S	60
	ETM259S	35
	ETM019S	120



## Accessories

### Cable clip with nail for flat cable(CCF)

**Plastic part:**

HDPE , Halogen free , UV-stabilized, impact resistant

**Metal part:**

Electroplated Zinc coated hardened steel

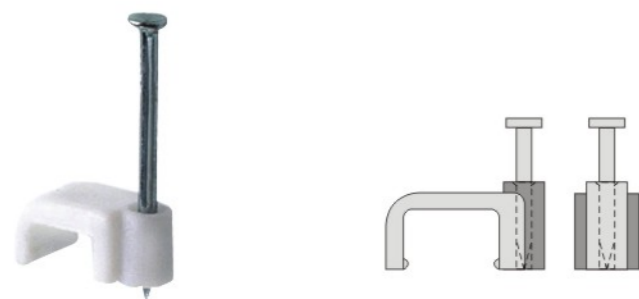
**Suitable Applications:**

Indoor & outdoor installations, wood & wood fiber boards , cellular concrete

**Working temperature:** -40°C-80°C

**Installation temperature:** -20°C-50°C

Type	Size	Colour	Diameter	Length
ETM020S	3x5mm	White	Ø 1.2	17.5
ETM016S	6x9mm	White	Ø 1.5	25
ETM017S	7x10mm	White	Ø 2.0	25



### Cable clip with nail for round cable(CCR)

**Plastic part:**

HDPE , Halogen free , UV-stabilized, impact resistant

**Metal part:**

Electroplated Zinc coated hardened steel

**Suitable Applications:**

Indoor & outdoor installations, wood & wood fiber boards , cellular concrete

**Working temperature:** -40°C-80°C

**Installation temperature:** -20°C-50°C

Type	Size	Colour	Diameter	Length
ETM020S/2	3-5	White	Ø 1.2	20
ETM256S	4-6	White	Ø 1.2	20
ETM018S	5-7	White	Ø 1.2	20
ETM019S	7-10	White	Ø 1.5	25
ETM019S/1	7-10	White	Ø 1.5	30
ETM257S	8-12	White	Ø 2	25
ETM257S/1	8-12	White	Ø 2	30
ETM257S/2	8-12	White	Ø 2	35
ETM257S/3	8-12	White	Ø 2	45
ETM258S	10-14	White	Ø 2	30
ETM258S/1	10-14	White	Ø 2	35
ETM258S/2	10-14	White	Ø 2	45
ETM259S	14-17	White	Ø 2	30
ETM259SN	14-20	White	Ø 2.2	30
ETM259SN/1	14-20	White	Ø 2.2	35
ETM259SN/2	14-20	White	Ø 2.2	45
ETM260S	18-22	White	Ø 2.2	40
ETM260SN	18-22	White	Ø 2.2	40
ETM260SN/1	18-22	White	Ø 2.2	45
ETM261S	22-26	White	Ø 2.2	40
ETM261SN	22-26	White	Ø 2.2	40
ETM261SN/1	22-26	White	Ø 2.2	45
ETM019S/1	7-10	Black	Ø 1.5	30
ETM258S/1	10-14	Black	Ø 2	35
ETM259SN/1	14-20	Black	Ø 2	35
ETM259SN/2	14-20	Black	Ø 2	45
ETM260SN/1	18-22	Black	Ø 2.2	45
ETM261SN/1	22-26	Black	Ø 2.2	45
ETM020S/1	3-5	Nature	Ø 1.2	16
ETM020S/2	3-5	Nature	Ø 1.2	20
ETM256S	4-6	Nature	Ø 1.2	20
ETM018S	5-7	Nature	Ø 1.2	20



## Accessories

### Cable clip with screw(CCS)



**Plastic part:**HDPE, Halogen free, UV-stabilized, impact resistant

**Metal part:**Corrosion class C4, Dacromet coating hardened steel

**Suitable Applications:**

Indoor & outdoor installations, wood & wood fiber boards, plasterboard, cellular concrete

**Working temperature:** -40°C-80°C

**Installation temperature:** -20°C-50°C

Type	Size	Colour	Diameter	Screw print	Total length	Screw length
ETM264S	7-10	White	Ø 5	PH2	40	34.5
ETM265S	8-12	White	Ø 5	PH2	40	34.5
ETM266S	10-14	White	Ø 5	PH2	40	34.5
ETM267S	14-18	White	Ø 5	PH2	40	34.5
ETM268S	18-22	White	Ø 5	PH2	40	34.5
ETM279S	22-26	White	Ø 5	PH2	40	34.5
ETM265S	8-12	Black	Ø 5	PH2	40	34.5
ETM266S	10-14	Black	Ø 5	PH2	40	34.5
ETM267S	14-18	Black	Ø 5	PH2	40	34.5
ETM268S	18-22	Black	Ø 5	PH2	40	34.5
ETM279S	22-26	Black	Ø 5	PH2	40	34.5

### Cable clip for concrete



Type	Size	Colour	Diameter	Nail length	Useful nail length
ETM269S	6x3.5mm	White	Ø1.2	11	5

### Steel cable clip with nail(SCC)



**Nail:** Electroplated Zinc coated hardened steel

**Clip:** Electroplated Zinc coated steel, powder-coated

**Suitable Applications:**

Indoor & outdoor installations, wood & wood fiber boards, cellular concrete

**Working temperature:** -40°C-80°C

**Installation temperature:** -20°C-50°C

Type	Clip sizes	Diameter	Nail length	Suitable tooling type
ETM255S	6-9	Ø 2	25	ETM245S
ETM252S/1	7-10	Ø 2	18	ETM290S
ETM252S	7-10	Ø 2	25	ETM290S
ETM252S/2	7-10	Ø 2	40	ETM290S
ETM254S/1	8-12	Ø 2	18	ETM243S
ETM254S	8-12	Ø 2	25	ETM243S
ETM254S/2	8-12	Ø 2	40	ETM243S
ETM293S	10-14	Ø 2	25	ETM291S
ETM293S/1	10-14	Ø 2	40	ETM291S
ETM294S	14-20	Ø 2	25	ETM292S
ETM294S/1	14-20	Ø 2	40	ETM292S

## Accessories

### Steel cable clip with screw(SCCS)

**Screw:** Electroplated Zinc coated hardened steel

**Clip:** Electroplated Zinc coated steel, powder-coated

**Suitable Applications:**

Indoor & outdoor installations, wood & wood fiber boards, plasterboard, cellular concrete

**Working temperature:** -40°C-80°C

**Installation temperature:** -20°C-50°C

Type	Clip sizes	Diameter	Nail length	Screw length	Suitable tooling type
ETM255S/S	6-9	Ø 2.7	25	15	ETM245S
ETM252S/S	7-10	Ø 2.7	25	15	ETM290S
ETM254S/S	8-12	Ø 2.7	25	15	ETM243S
ETM293S/S	10-14	Ø 2.7	25	15	ETM291S
ETM294S/S	14-20	Ø 2.7	25	15	ETM292S



### Metal double staples(MDS)

Electroplated Zinc coated hardened steel

Corrosion class C4

**Suitable Applications:** Indoor & outdoor installations, wood & wood fiber boards, cellular concrete

**Working temperature:** -40°C-80°C

**Installation temperature:** -20°C-50°C

Type	For pipes	Nail length (mm)	Thickness
82109200	16	16	1.0
82109300	20	20	1.5
82109400	27	32	1.5
82109500	25	30	1.5
82109600	32	35	1.5



## Accessories

### Simple long cable clips with nail and plug, Nature(SCP)



**Plastic part:** HDPE, Halogen free, UV-stabilized, impact resistant

**metal part:** corrosion class C4, Dacromet coating hardened steel

**Suitable Applications Bearing force:** Indoor & outdoor installations, wood & wood fiber boards(10kg), solid concrete (10kg), cellular concrete (5kg)

**Working temperature:** -40°C-80°C

**Installation temperature:** -20°C-50°C

Type	Clip sizes	Nail length(mm)	Nail diameter(mm)	Plug Diameter	Plug length(mm)	For Drilling
82002000	16-19 or 16-20	40	2.5	Ø 5.5	23	5.5
82002100	19-22 or 20-22	40	2.5	Ø 5.5	23	5.5

### Double long cable clips with nail and plug, Nature (DCP)



**Plastic part:** HDPE, Halogen free, UV-stabilized, impact resistant

**metal part:** Corrosion class C4, Dacromet coating hardened steel

**Suitable Applications Bearing force:** Indoor & outdoor installations, wood & wood fiber boards(10kg), solid concrete (10kg), cellular concrete (5kg)

**Working temperature:** -40°C-80°C

**Installation temperature:** -20°C-50°C

Type	Clip sizes	Nail length(mm)	Nail diameter(mm)	Plug diameter	Plug length(mm)	For Drilling
82002200	16-19 or 16-20	40	Ø 2.5	Ø 5.5	23	Ø 5.5
82002300	19-22 or 20-22	40	Ø 2.5	Ø 5.5	23	Ø 5.5

## Accessories

### Plastic Cable clip(PCC)

**Plastic part:** HDPE, Halogen free, UV-stabilized, impact resistant

**Suitable Applications:** Indoor & outdoor installations

**Working temperature:** -40°C-80°C

**Installation temperature:** -20°C-50°C

Type	Clip sizes	Colour	Recommended mounting screw size	
			machine thread screw	Self-tapping screw(mm)
82003000	3-5	White	M4	Ø 5
82003100	5-7	White	M4	Ø 5
82003200	7-10	White	M5	Ø 5
82003300	10-14	White	M5	Ø 5
82003400	14-20	White	M6	Ø 6
82003500	20-26	White	M6	Ø 6



### Stainless cable clip, round

Stainless steel  
corrosion class C4

**Plastic part:** HDPE, Halogen free, UV-stabilized, impact resistant

**Suitable Applications:** Indoor & outdoor installations

**Working temperature:** -40°C-80°C

**Installation temperature:** -20°C-50°C

#### Single(SCCS)

Type	Clip sizes(mm)
82201000	10
82201100	12
82201200	14
82201300	16

#### Double(SCCD)

Type	Clip sizes(mm)
82201400	16
82201500	20



Single(SCCS)



Double(SCCD)

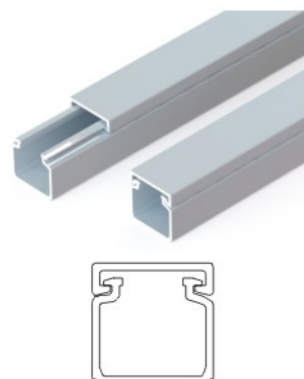
## Accessories

### Cable trunking

#### Technical details

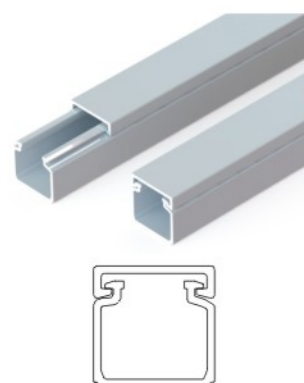
- Plastic, insulating, shock-proof, self-extinguishing material in compliance with UL 94 V0 Standard and resistant to abnormal heat and fire up to 960°C (glow wire test) in compliance with IEC 695-2-1 Standard
- Dimensional stability from -20 to +60°C
- Resistant to acids, oils and greases
- Standard 2-metre long
- Easy-to-position self-adhesive base
- Acrylic-base adhesive, resistant to the light and to ageing
- Residential application
- Degree of protection Ip40
- Resistance to impacts: 6 joules
- Wall and ceiling mounting, fastening with dowels
- Complete accessories

### Cable trunking without self adhesive



Art.No.	Description/Remark
81600001	9*5mm,2M,white
81600301	12*7mm,2M,white
81600401	16*10mm,2M,white
81600501	16*16mm,2M,white
81600601	20*10mm,2M,white
81600801	25*16mm,2M,white
81601501	40*17mm,2M,white
81601201	40*25mm,2M,white
81601401	60*40mm,2M,white

### Cable trunking with self adhesive



Art.No.	Description/Remark
81600000	9*5mm,2M,white
81600300	12*7mm,2M,white
81600400	16*10mm,2M,white
81600500	16*16mm,2M,white
81600600	20*10mm,2M,white
81600800	25*16mm,2M,white
81601500	40*17mm,2M,white
81601200	40*25mm,2M,white
81601400	60*40mm,2M,white

## Accessories

### Soft top cable trunking

Art.No.	Type	Description/Remark
81602200	816022	5.5mm, white, 1.0M
81602100	816021	7mm, white, 1.0M
81602000	816020	9mm, white, 1.0M



### U type cable trunking

Suitable for snap-on application of single cables (aerial, telephone and electric circuits)

Art.No.	Type	Description/Remark
81603021	816030	2-4mm, White - w/tape, 1.0M
81603121	816031	4-6mm, White - w/tape, 1.0M
81603220	816032	6-8mm, White - w/tape, 1.0M
81603321	816033	8-10mm, White - w/tape, 1.0M



### TV trunking

Art.No.	Description(Width*Height)/Remark
51604000	52*18, 1.2m with 4 tap with 6 screw white
81604001	52*18, 1.2m with 4 tap with 6 screw black



### Floor cable trunking with adhesive

Art.No.	Description/Remark
6438565459850	39mm*13mm*1m, 1pc with label, White
6438565459867	49mm*13mm*1m, 1pc with label, White
6438565459874	59mm*15mm*1m, 1pc with label, White
6438565459881	79mm*23mm*1m, 1pc with label, White



# Power Distribution Units



## Rubber extension cord, IP44

Resist on low temperature condition: -35 degree  
Spring lid.

Art.No.	Type	Description/Remark
83311001	ACPW37+ACJ101044	H05RR-F 3G1.5mm <sup>2</sup> / 15M (plug and cable: Black, socket: Red)
83311002	ACPW37+ACJ101044	H05RR-F 3G1.5mm <sup>2</sup> / 20M (plug and cable: Black, socket: Red)
83311003	ACPW37+ACJ101044	H05RR-F 3G1.5mm <sup>2</sup> / 25M (plug and cable: Black, socket: Red)
83311004	ACPW37+ACJ101044	H05RR-F 3G1.5mm <sup>2</sup> / 50M (plug and cable: Black, socket: Red)
83311005	ACPW37+ACJ101044	H07RN-F 3G1.5mm <sup>2</sup> / 10M (plug and cable: Black, socket: Red)
83311006	ACPW37+ACJ101044	H07RN-F 3G1.5mm <sup>2</sup> / 15M (plug and cable: Black, socket: Red)
83311007	ACPW37+ACJ101044	H07RN-F 3G1.5mm <sup>2</sup> / 20M (plug and cable: Black, socket: Red)



Resist on low temperature condition: -35 degree  
Spring lid.

Art.No.	Type	Description/Remark
83312102	ACPW37+ETM212S-1	2 -way Ext. H05RR-F 3G1.5mm <sup>2</sup> / 15M (plug and cable:Black,socket: Red)
83312103	ACPW37+ETM212S-1	2 -way Ext. H05RR-F 3G1.5mm <sup>2</sup> / 20M (plug and cable:Black,socket: Red)
83312104	ACPW37+ETM212S-1	2 -way Ext. H05RR-F 3G1.5mm <sup>2</sup> / 25M (plug and cable:Black,socket: Red)
83312105	ACPW37+ETM212S-1	2 -way Ext. H05RR-F 3G1.5mm <sup>2</sup> / 50M (plug and cable:Black,socket: Red)
83312110	ACPW37+ETM212S-1	2 -way Ext. H07RN-F 3G1.5mm <sup>2</sup> / 10M (plug and cable:Black,socket: Red)
83312111	ACPW37+ETM212S-1	2 -way Ext. H07RN-F 3G1.5mm <sup>2</sup> / 15M (plug and cable:Black,socket: Red)
83312112	ACPW37+ETM212S-1	2 -way Ext. H07RN-F 3G1.5mm <sup>2</sup> / 20M (plug and cable:Black,socket: Red)



German IP44  
Resist on low temperature condition: -35 degree

Art.No.	Type	Description/Remark
83311803	ACPW38	Ext. H05RR-F 3G1.5mm <sup>2</sup> / 20M , Black
83311804	ACPW38	Ext. H05RR-F 3G1.5mm <sup>2</sup> / 25M , Black
83311805	ACPW38	Ext. H05RR-F 3G1.5mm <sup>2</sup> / 50M , Black
83311809	ACPW38	Ext. H07RN-F 3G1.5mm <sup>2</sup> / 5M , Black
83311810	ACPW38	Ext. H07RN-F 3G1.5mm <sup>2</sup> / 10M , Black
83311811	ACPW38	Ext. H07RN-F 3G1.5mm <sup>2</sup> / 15M , Black
83311812	ACPW38	Ext. H07RN-F 3G1.5mm <sup>2</sup> / 20M , Black
83311813	ACPW38	Ext. H07RN-F 3G1.5mm <sup>2</sup> / 25M , Black



**Rewiralbe plug, IP20**

Art.No.	Type	Description/Remark
83011050	ACP1001	Without earth straight , White
83011051	ACP1001	Without earth straight , Black
83012120	ACP1002	Earthed , straight , White
83012121	ACP1002	Earthed , straight , Black
83013050	ACP1003-1	Without earth , side , White
83013051	ACP1003-1	Without earth , side , Black
83013150	ACP1003	Earthed , side , White
83013151	ACP1003	Earthed , side , Black



ACP1001



ACP1002



ACP1003-1



ACP1003

**Rewiralbe socket, IP20**

Art.No.	Type	Description/Remark
83111010	ACJ1011	Without earth , White
83111011	ACJ1011	Without earth , Black
83111110	ACJ1010	Earthed , White
83111111	ACJ1010	Earthed , Black



ACJ1011



ACJ1010

**Rewirable socket, IP44**

Resist on low temperature condition: -30 degree  
Spring lid.

Art.No.	Type	Description/Remark
83112121	ACJ101044	Socket earthed , Red , IP44
83112122	ETM212S-1	2-way socket earthed , Yellow , Ip44 , without shutter
83112123	ETM212S-1	2-way socket earthed , Red , IP44 , without shutter
83112222	ETM212S	2-way socket earthed , Yellow , IP44 , with shutter
83112223	ETM212S	2-way socket earthed , Red , IP44 , with shutter



ACJ101044 ETM212S-1

**Rewirable plug, Rubber**

Resist on low temperature condition: -35 degree

Art.No.	Type	Description/Remark
83014420	ETM227S	Earthed , straight , black , IP44
83014421	ETM227S	Earthed , straight , yellow , IP44
83014422	ETM227S	Earthed , straight , orange , IP44



ETM227S

**Rewirable socket, Rubber**

German IP44

Resist on low temperature condition: -35 degree , without shutter

Art.No.	Type	Description/Remark
83114420	ETM228S	Earthed , straight , black , IP44
83114421	ETM228S	Earthed , straight , yellow , IP44
83114422	ETM228S	Earthed , straight , orange , IP44



ETM228S

### Power distribution box



**Colour:** Grey, yellow  
**Frequency:** 50Hz  
**Technical:** 16/32A 250/400VAC  
**Complies with the standard(s):** EN61439-4, EN60439-4  
**Fire hazard test:** 850°C (IEC60695-2-11)  
**ISO certifications:** ISO 9001, ISO 14001, ISO 45001  
**Certificates:** CE  
**Conforms with:** LVD, RoHS, WEEE  
**Working temperature indoor:** -25°C to +60°C  
**Installation temperature:** -5°C to +25°C

This power distribution box (PDB) delivers safe and practical power management for various site conditions. Available as portable bag models (Mini and Midi, 16–32 A) or cabinet models (32–63 A), each unit is housed in a robust thermoplastic enclosure. It features a self-closing transparent lid protecting the miniature circuit breakers, a grip-friendly handle with a hook hole for easy suspension, and default earthed outgoing groups fused with C-curve MCBs.

Input: 416-6 industrial plug. Output: Protected by RCCB (40 A, 4P, 0.03 A), includes four 16 A Schuko sockets secured by two 16 A 1P MCBs, plus two 416-6 industrial sockets.

Art.No.	Description/Remark
83611701	16A 400V, 4 Schuko sockets, 1-pole fuse, input: 416-6 industry plug, output: secured by RCCB (40A, 4P, 0.03A), 4x16A Schuko socket, secured by 2xMCB(16A, 1P), 2x416-6 industry socket



**Colour:** Grey, yellow  
**Frequency:** 50Hz  
**Technical:** 16/32A 250/400VAC  
**Complies with the standard(s):** EN61439-4, EN60439-4  
**Fire hazard test:** 850°C (IEC60695-2-11)  
**ISO certifications:** ISO 9001, ISO 14001, ISO 45001  
**Certificates:** CE  
**Conforms with:** LVD, RoHS, WEEE  
**Working temperature indoor:** -25°C to +60°C  
**Installation temperature:** -5°C to +25°C

This PDB is available in practical bag models (Mini and Midi, 16 to 32 A) and robust cabinet models (32 to 63 A), each unit is made from durable thermoplastic material for long-lasting use. It features a self-closing transparent lid that protects the miniature circuit breakers, and a grip-friendly handle with a hole for secure hook mounting. The box includes earthed outgoing groups fused with C-curve miniature circuit breakers to ensure dependable protection. This model is equipped with a 432-6 industrial plug for 32A, 400V input, and provides output secured by a 40A, 4P, 0.03A RCCB. It includes four 16A Schuko sockets protected by two 16A 1P MCBs, one 416-6 industrial socket secured by a 16A 4P MCB, and one 432-6 industrial socket.

Art.No.	Description/Remark
83611702	32A 400V, 4 Schuko sockets, 1-pole fuse input: 432-6 industry plug, output: secured by RCCB (40A, 4P, 0.03A), 4x16A Schuko socket, secured by 2xMCB(16A, 1P), 1x416-6 industry socket, secured by MCB (16A, 4P), 1x432-6 industry socket

### Power distribution box



**Colour:** Grey, yellow  
**Frequency:** 50Hz  
**Technical:** 16/32A 250/400VAC  
**Complies with the standard(s):** EN61439-4, EN60439-4  
**Fire hazard test:** 850°C (IEC60695-2-11)  
**ISO certifications:** ISO 9001, ISO 14001, ISO 45001  
**Certificates:** CE  
**Conforms with:** LVD, RoHS, WEEE  
**Working temperature indoor:** -25°C to +60°C  
**Installation temperature:** -5°C to +25°C

This power distribution box (PDB) ensures safe and efficient power supply for demanding sites and events. Available in Mini and Midi bag models (16–32 A) and cabinet models (32–63 A), it features a tough thermoplastic enclosure, self-closing transparent lid over the miniature circuit breakers, and a grip-friendly handle with a hook hole for easy handling. Earthed outgoing groups are fused with C-curve miniature circuit breakers for reliable protection. This version has a 416-6 industrial plug for 16A, 400V input, and an output secured by an RCCB (40A, 4P, 0.03A). It includes eight 16A Schuko sockets protected by four 16A 1P MCBs and two 416-6 industrial sockets, making it a versatile and durable power solution.

Art.No.	Description/Remark
83611703	16A 400V, 8 Schuko sockets, 1-pole fuse, input: 416-6 industry plug, output: secured by RCCB (40A, 4P, 0.03A), 8x16A Schuko socket, secured by 4xMCB(16A, 1P), 2x416-6 industry socket

**Colour:** Grey, yellow  
**Frequency:** 50Hz  
**Technical:** 16/32A 250/400VAC  
**Complies with the standard(s):** EN61439-4, EN60439-4  
**Fire hazard test:** 850°C (IEC60695-2-11)  
**ISO certifications:** ISO 9001, ISO 14001, ISO 45001  
**Certificates:** CE  
**Conforms with:** LVD, RoHS, WEEE  
**Working temperature indoor:** -25°C to +60°C  
**Installation temperature:** -5°C to +25°C

This power distribution box (PDB) ensures safe and efficient power supply for demanding sites and events. Available in Mini and Midi bag models (16–32 A) and cabinet models (32–63 A), it features a tough thermoplastic enclosure, self-closing transparent lid over the miniature circuit breakers, and a grip-friendly handle with a hook hole for easy handling. Earthed outgoing groups are fused with C-curve miniature circuit breakers for reliable protection. This version has a 416-6 industrial plug for 16A, 400V input, and an output secured by an RCCB (40A, 4P, 0.03A). It includes eight 16A Schuko sockets protected by four 16A 1P MCBs and two 416-6 industrial sockets, making it a versatile and durable power solution.

Art.No.	Description/Remark
83611704	32A 400V, 8 Schuko sockets, 1-pole fuse, input: 432-6 industry plug, output: secured by RCCB (40A, 4P, 0.03A), 8x16A Schuko socket, secured by 4xMCB (16A, 1P), 1x416-6 industry socket, secured by MCB (16A, 4P), 1x432-6 industry socket

### Power distribution box



**Colour:** Grey, yellow  
**Frequency:** 50Hz  
**Technical:** 16/32A 250/400VAC  
**Complies with the standard(s):** EN61439-4, EN60439-4  
**Fire hazard test:** 850°C (IEC60695-2-11)  
**ISO certifications:** ISO 9001, ISO 14001, ISO 45001  
**Certificates:** CE  
**Conforms with:** LVD, RoHS, WEEE  
**Working temperature indoor:** -25°C to +60°C  
**Installation temperature:** -5°C to +25°C

This power distribution box (PDB) provides safe, flexible power distribution for various applications. Available in Mini and Midi bag models (16–32 A) and cabinet models (32–63 A), it features a tough thermoplastic enclosure, a self-closing transparent lid over the circuit breakers, and a handle with a hook hole for easy handling and mounting. Outgoing groups are earthed and protected by C-curve MCBs. This version includes a 316-6 industrial plug for 16A, 400V input, and an output secured by an RCCB (40A, 4P, 0.03A). It has four 16A Schuko sockets protected by two 16A 2P MCBs and two 316-9 industrial sockets, ensuring reliable power on site.

Art.No.	Description/Remark
1523187	16A 400V, 4 Schuko sockets, 2-pole fuse, input: 316-6 industry plug, output: secured by RCCB (40A, 4P, 0.03A), 4x16A Schuko socket, secured by 2xMCB (16A, 2P), 2x316-9 industry socket



**Colour:** Grey, yellow  
**Frequency:** 50Hz  
**Technical:** 16/32A 250/400VAC  
**Complies with the standard(s):** EN61439-4, EN60439-4  
**Fire hazard test:** 850°C (IEC60695-2-11)  
**ISO certifications:** ISO 9001, ISO 14001, ISO 45001  
**Certificates:** CE  
**Conforms with:** LVD, RoHS, WEEE  
**Working temperature indoor:** -25°C to +60°C  
**Installation temperature:** -5°C to +25°C

This power distribution box (PDB) is built for safe, reliable power supply on demanding sites. Available in Mini and Midi bag models (16–32A) and cabinet models (32–63A), it features a durable thermoplastic enclosure, a self-closing transparent lid over the circuit breakers, and a sturdy handle with a hook hole for easy mounting. With a 416-6 industrial plug for 16A, 400V input, it delivers power through an RCCB (40A, 4P, 0.03A), four 16A Schuko sockets secured by two 2P MCBs, and two 416-6 industrial sockets.

Art.No.	Description/Remark
1523188	16A 400V, 4 Schuko sockets, 2-pole fuse input: 416-6 industry plug, output: secured by RCCB (40A, 4P, 0.03A), 4x16A Schuko socket, secured by 2xMCB (16A, 2P), 2x416-6 industry socket

### Power distribution box



**Colour:** Grey, yellow  
**Frequency:** 50Hz  
**Technical:** 16/32A 250/400VAC  
**Complies with the standard(s):** EN61439-4, EN60439-4  
**Fire hazard test:** 850°C (IEC60695-2-11)  
**ISO certifications:** ISO 9001, ISO 14001, ISO 45001  
**Certificates:** CE  
**Conforms with:** LVD, RoHS, WEEE  
**Working temperature indoor:** -25°C to +60°C  
**Installation temperature:** -5°C to +25°C

This PDB ensures safe, organised power on worksites and events. Available in Mini and Midi bag models (16–32A) and cabinet models (32–63A), it features a robust thermoplastic enclosure, a self-closing transparent lid over the circuit breakers, and a handle with a hook hole for easy handling. With a 332-9 industrial plug for 32A, 230V input, the output is protected by an RCCB (40A, 4P, 0.03A) and includes four 16A Schuko sockets secured by two 2P MCBs, one 316-9 socket with a 3P MCB, and one 332-9 socket..

Art.No.	Description/Remark
1501478	32A 230V, 4 Schuko sockets, 2-pole fuse, input: 332-9 industry plug, output: secured by RCCB (40A, 4P, 0.03A), 4x16A Schuko socket, secured by 2xMCB (16A, 2P), 1x316-9 industry socket, secured by MCB (16A, 3P), 1x332-9 industry socket

**Colour:** Grey, yellow  
**Frequency:** 50Hz  
**Technical:** 16/32A 250/400VAC  
**Complies with the standard(s):** EN61439-4, EN60439-4  
**Fire hazard test:** 850°C (IEC60695-2-11)  
**ISO certifications:** ISO 9001, ISO 14001, ISO 45001  
**Certificates:** CE  
**Conforms with:** LVD, RoHS, WEEE  
**Working temperature indoor:** -25°C to +60°C  
**Installation temperature:** -5°C to +25°C

This power distribution box (PDB) provides safe and reliable power where you need it most. Available in Mini and Midi bag models (16–32A) and cabinet models (32–63A), it features a tough thermoplastic enclosure, a self-closing transparent lid over the circuit breakers, and a practical handle with a hook hole for easy handling. With a 432-6 industrial plug for 32A, 400V input, the output is protected by an RCCB (40A, 4P, 0.03A) and includes four 16A Schuko sockets secured by two 2P MCBs, plus one 416-6 and one 432-6 industrial socket, each fused for safe use.

Art.No.	Description/Remark
1501479	32A 400V, 4 Schuko sockets, 2-pole fuse, input: 432-6 industry plug, output: secured by RCCB (40A, 4P, 0.03A), 4x16A Schuko socket, secured by 2xMCB (16A, 2P), 1x416-6 industry socket, secured by MCB (16A, 4P), 1x432-6 industry socket

### Power distribution box



**Colour:** Grey, yellow  
**Frequency:** 50Hz  
**Technical:** 16/32A 250/400VAC  
**Complies with the standard(s):** EN61439-4, EN60439-4  
**Fire hazard test:** 850°C (IEC60695-2-11)  
**ISO certifications:** ISO 9001, ISO 14001, ISO 45001  
**Certificates:** CE  
**Conforms with:** LVD, RoHS, WEEE  
**Working temperature indoor:** -25°C to +60°C  
**Installation temperature:** -5°C to +25°C

This power distribution box (PDB) ensures safe and efficient power for worksites and temporary setups. Available as Mini and Midi bag models (16–32A) and cabinet models (32–63A), it features a durable thermoplastic enclosure, a self-closing transparent lid over the circuit breakers, and a sturdy handle with a hook hole for easy transport. With a 332-9 industrial plug for 32A, 230V input, the output is secured by an RCCB (40A, 4P, 0.03A) and includes eight 16A Schuko sockets protected by four 2P MCBs and two 332-9 industrial sockets for flexible connections.

Art.No.	Description/Remark
1501480	32A 230V, 8 Schuko sockets, 2-pole fuse, input: 332-9 industry plug, output: secured by RCCB (40A, 4P, 0.03A), 8x16A Schuko socket, secured by 4x2P MCB (16A, 2P), 2x332-9 industry socket



**Colour:** Grey, yellow  
**Frequency:** 50Hz  
**Technical:** 16/32A 250/400VAC  
**Complies with the standard(s):** EN61439-4, EN60439-4  
**Fire hazard test:** 850°C (IEC60695-2-11)  
**ISO certifications:** ISO 9001, ISO 14001, ISO 45001  
**Certificates:** CE  
**Conforms with:** LVD, RoHS, WEEE  
**Working temperature indoor:** -25°C to +60°C  
**Installation temperature:** -5°C to +25°C

This power distribution box (PDB) provides safe and reliable power where you need it most. Available in Mini and Midi bag models (16–32A) and cabinet models (32–63A), it features a tough thermoplastic enclosure, a self-closing transparent lid over the circuit breakers, and a practical handle with a hook hole for easy handling. With a 432-6 industrial plug for 32A, 400V input, the output is protected by an RCCB (40A, 4P, 0.03A) and includes four 16A Schuko sockets secured by two 2P MCBs, plus one 416-6 and one 432-6 industrial socket, each fused for safe use.

Art.No.	Description/Remark
1501479	32A 400V, 4 Schuko sockets, 2-pole fuse, input: 432-6 industry plug, output: secured by RCCB (40A, 4P, 0.03A), 4x16A Schuko socket, secured by 2x2P MCB (16A, 2P), 1x416-6 industry socket, secured by MCB (16A, 4P), 1x432-6 industry socket

