

Small room fans MiniVent® M1

Big benefits
for our smallest fans.

+black.

MiniVent M1/100 now
also available in black!

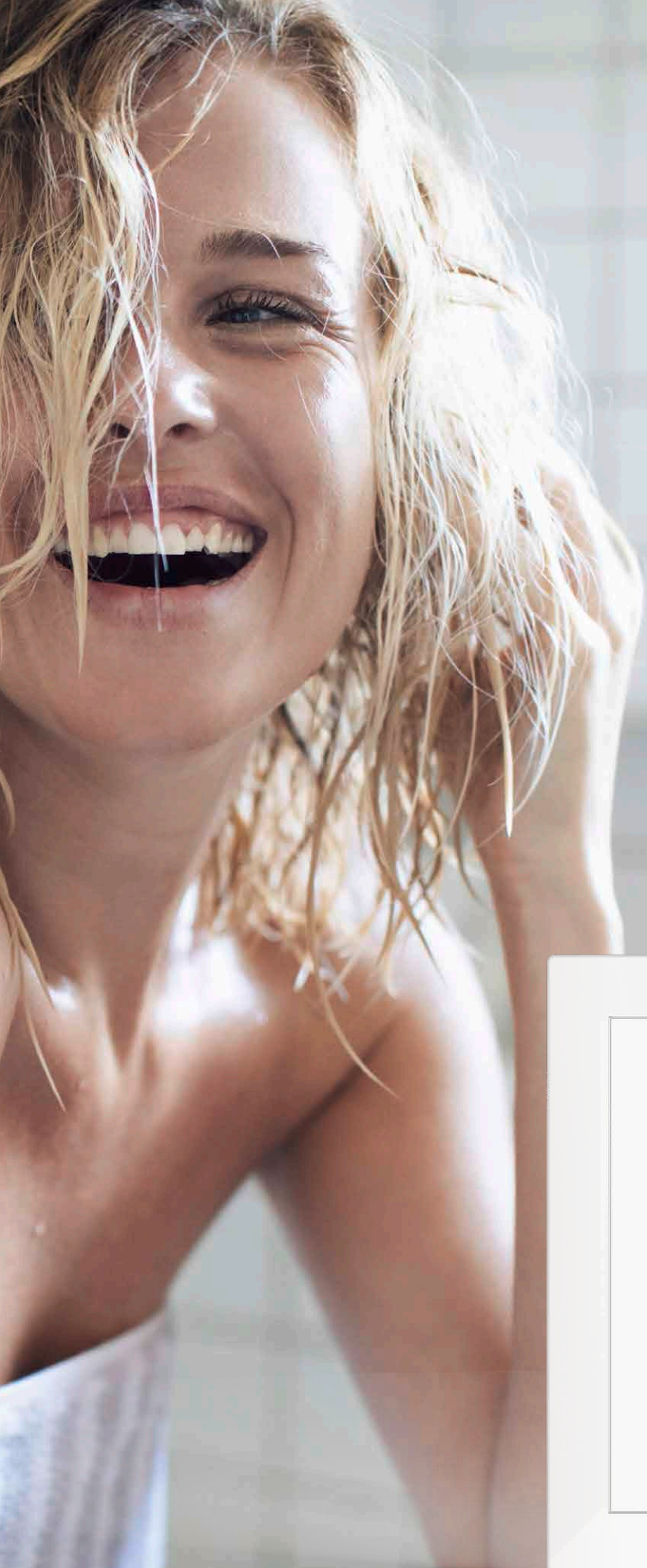


For eye-catching results (not only) in the bathroom.

The MiniVent M1 family is Helios' most successful range of small room fans because they fit perfectly everywhere. Whether in toilets, bathrooms, changing rooms or fitness rooms.

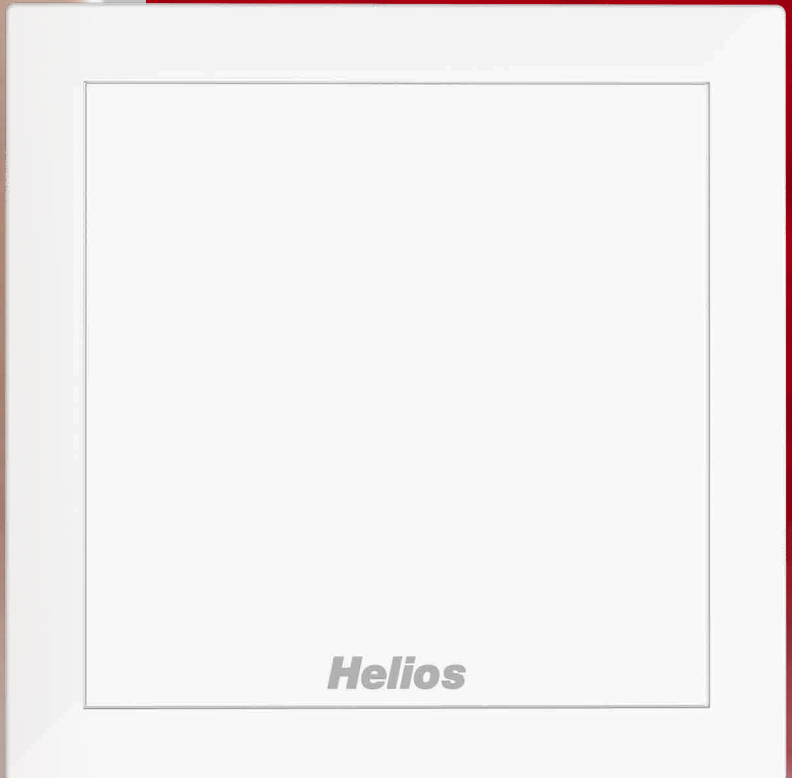
Available in three sizes offering airflows up to 260 m³/h, IPX5 jet water protection and a wide range of comfort options, MiniVent M1 leaves nothing to be desired.

Designed and manufactured in Germany, ensuring the highest quality standards.

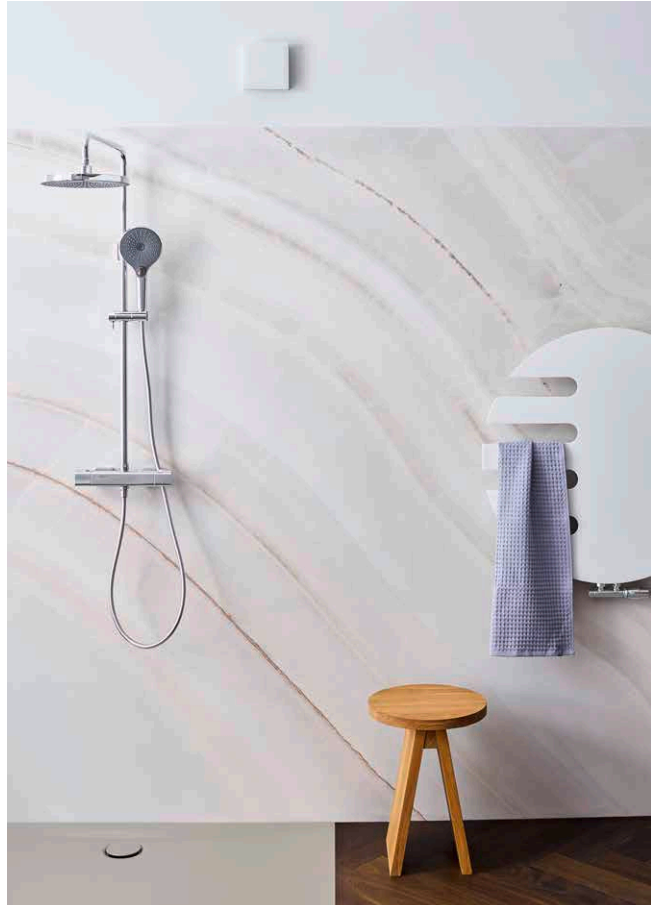


Highlights

- 3 sizes: DN 100, 120 and 150 mm.
- Various comfort features: With humidity control or presence detector for barrier-free automatic operation, or available as a 0-10 V version (M1/150).
- Ultra-quiet thanks to innovative ultraSilence technology.
- Multiple award-winning premium design.
- **NEW:** M1/100 now available in black.



3 sizes. For every room.

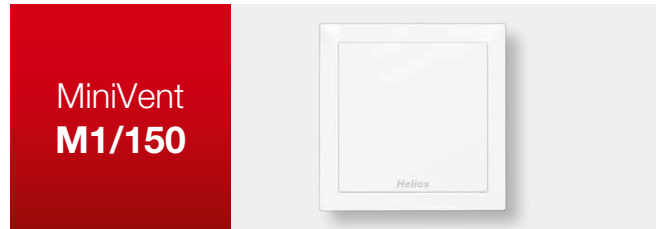
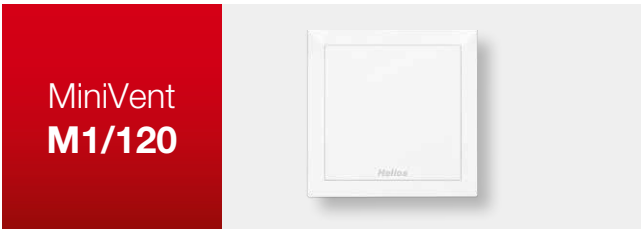
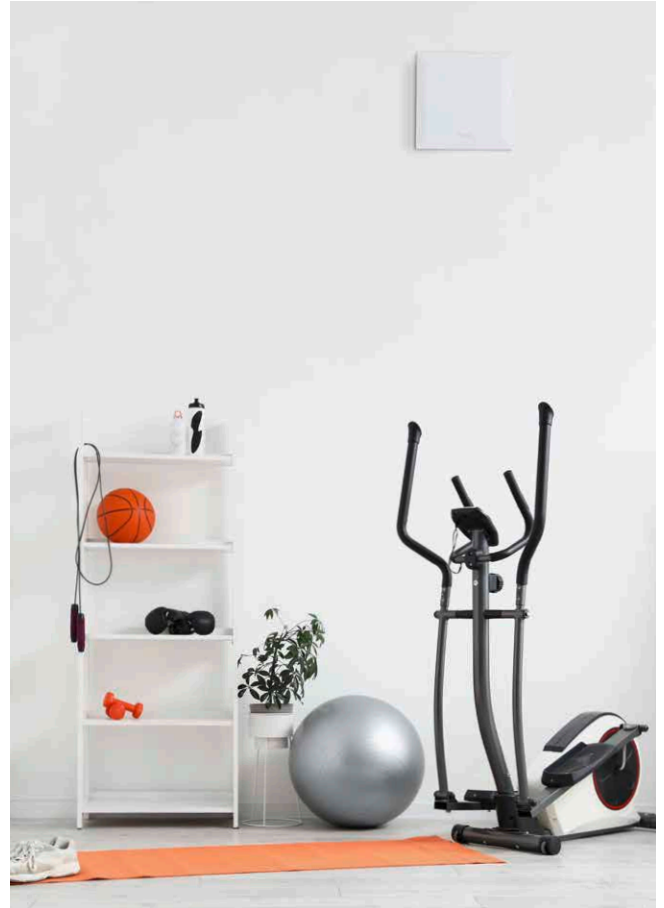


MiniVent
M1/100



For **small rooms** such as toilets and bathrooms.
Now available in deep black.

- 2 standard performance levels: **90/75 m³/h**.
- Power consumption: **5 watts** at $\dot{V} = 75 \text{ m}^3/\text{h}$.
- Ultra-quiet: **25 dB(A)** at $\dot{V} = 75 \text{ m}^3/\text{h}$.
- Pressure performance: **60 m³/h** at **31 Pa** resistance.
90 m³/h free-blowing, ΔP max. **45 Pa**.
- Tight-closing backdraught shutter as standard.
- Installation depth can be reduced from **96 mm** to **52 mm** with the removable guide wheel.
- For universal flush-mounted installation in walls, shafts and ceilings with **NW 100**.



For **medium-sized rooms** such as club showers and lounges.

- 2 standard performance levels: **170/150 m³/h**.
- Power consumption: **10 watts** at $\dot{V} = 150 \text{ m}^3/\text{h}$.
- Ultra-quiet: **32 dB(A)** at $\dot{V} = 150 \text{ m}^3/\text{h}$.
- Pressure performance: **120 m³/h** at **31 Pa** resistance.
170 m³/h free-blowing, ΔP max. **53 Pa**.
- Tight-closing backdraught shutter as standard.
- Installation depth can be reduced from **116 mm** to **70 mm** with the removable guide wheel.
- For universal flush-mounted installation in walls, shafts and ceilings with **NW 120/125**.

For **medium to large rooms** such as fitness areas.
Extremely energy-efficient thanks to EC technology.

- 2 standard performance levels: **260/220 m³/h**.
- Power consumption: **6 watts** at $\dot{V} = 220 \text{ m}^3/\text{h}$.
- Ultra-quiet: **35 dB(A)** at $\dot{V} = 220 \text{ m}^3/\text{h}$.
- Pressure performance: **180 m³/h** at **31 Pa** resistance.
260 m³/h free-blowing, ΔP max. **33 Pa**.
- Tight-closing backdraught shutter as standard.
- Installation depth can be reduced from **142 mm** to **76 mm** with the removable guide wheel.
- For universal flush-mounted installation in walls, shafts and ceilings with **NW 150/160**.

+black.

2 looks that hit the mark.

For years, MiniVent in classic white has been a popular small fan and has won nearly all major design awards. We are now introducing a completely new look. If you envision black for your new bathroom project, we have just the thing for you:

We embrace the trend of elegant bathrooms with a dark aesthetic and present: +black. Our most popular fans for bathrooms and similar spaces are now also available in a deep black. MiniVent M1/100 in the new +black finish look fantastic and also blend in seamlessly - even on the darkest tiles or as an accent in bright rooms. This is bound to hit the mark with your customers!





Grade 1 on site.

MiniVent installation.



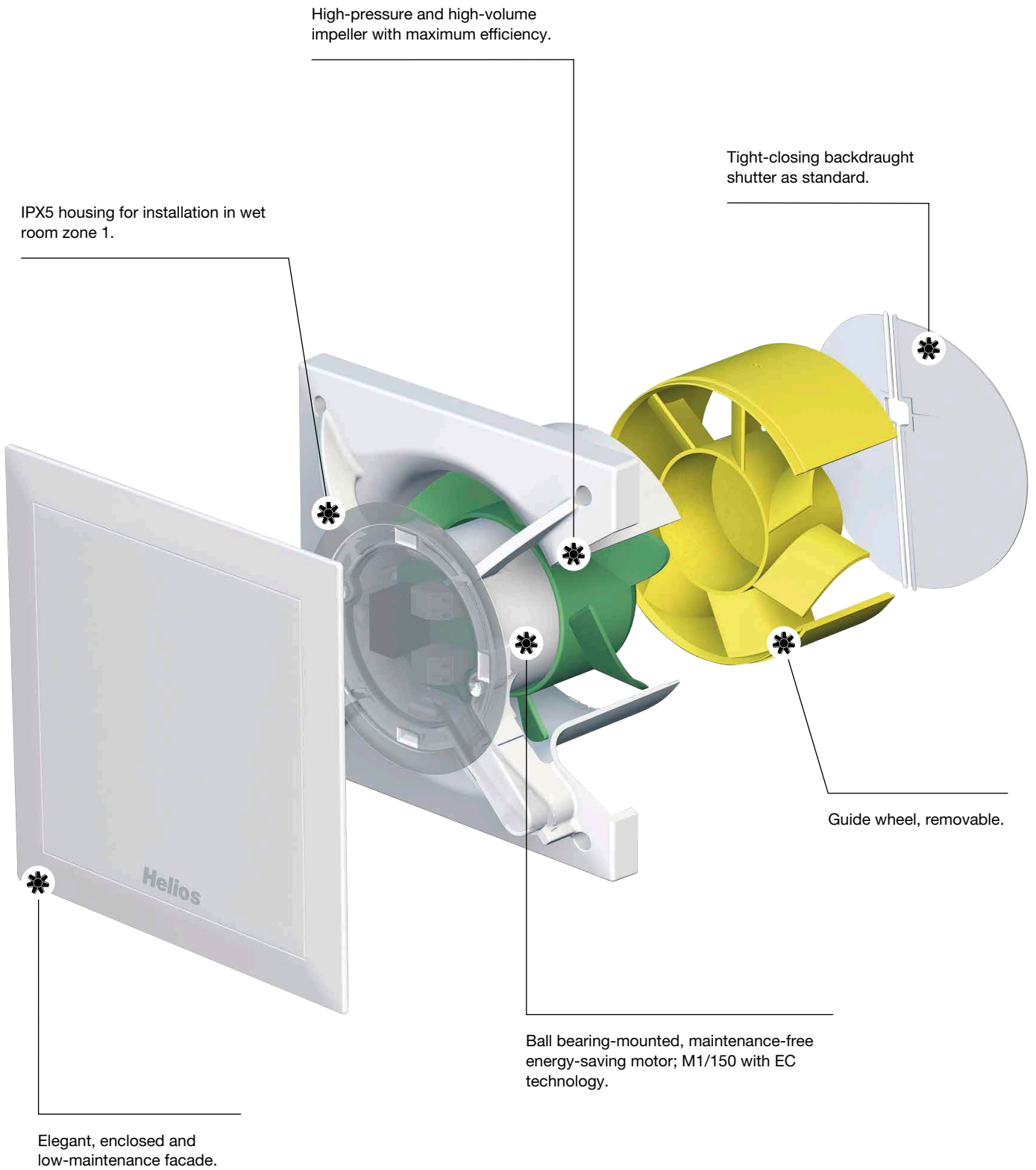
100% installation-friendly.

- The generously sized, surrounding cable storage and the 90° rotational capability of the housing with facade make connecting the MiniVent M1 extremely easy.
- No matter where the cable comes out of the wall. No more tedious adjustments to the cable slot.
- The M1/150 models feature a second cable channel – ideal for connecting an external electrical shutter.



Increased comfort on site.

- Screwless terminals on all MiniVent models ensure that electrical connections are completed in no time at all.
- Thanks to its shallow installation depth, the M1 can be easily installed even in tight spaces.
- If necessary, the guide wheel can be removed without tools to save even more space.





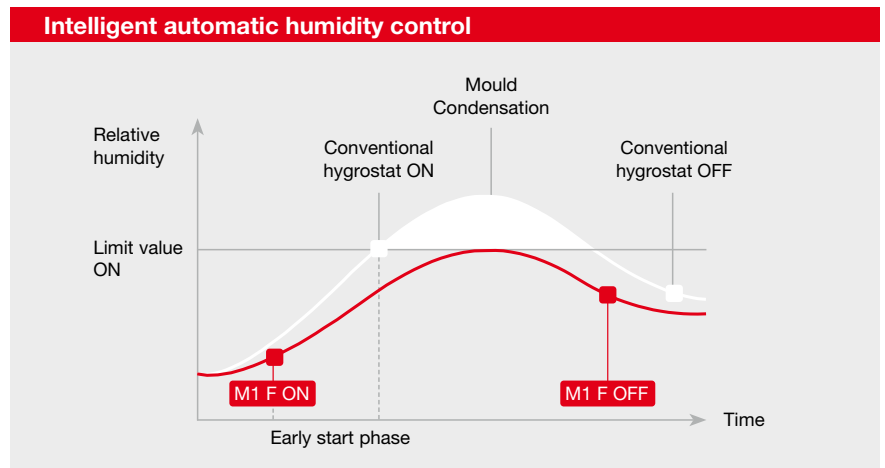
MiniVent M1 in wet rooms

With IPX5 certification, all MiniVent M1 models are optimally protected against jet water.

The M1 F models also feature intelligent humidity control that automatically maintains optimal room humidity without user intervention.

100%

humidity protection.



M1 in wet rooms.

M1 installation has virtually no restrictions. This is partly ensured by the IPX5 jet water protection. All M1 models can be safely used in wet room **zone 1** according to DIN VDE 0100-701.

Intelligent automatic humidity control

Rapidly increasing humidity must be addressed immediately. The earlier a fan intervenes, the less condensation will form and the more effectively it will prevent mould and moisture damage. MiniVent M1 F is equipped with a highly intelligent and effective system for early humidity detection, which can, if requi-

red, immediately start in a high ventilation setting when humidity starts to increase and responds to various types of humidity increase.

With regard to normal humidity increases (e.g. due to normal washing), the fan will activate when the defined limit is reached and run until the room air humidity has dropped by around 10%.

With regard to fast humidity increases (e.g. due to showering), the fan will activate before reaching the limit and thus prevents excessive humidity at an early stage and quickly.

Furthermore, the dynamic humidity control is able to differentiate real humidity increases from external disturbances (e.g. weather-related high air humidity). With the M1/150, moisture can also be removed via two-level or stepless control, depending on local conditions and requirements. The activation levels can be set as required.

5 models.

For every application.



M1. The standard version.

Manual control via switch, parallel with light or automatic via timer.

All three sizes have two performance levels for demand-based operation at maximum pressure output: 90/75 m³/h for M1/100, 170/150 m³/h for M1/120 and 260/220 m³/h for M1/150.

Ideal for:
Rooms with standard requirements.



M1/100

M1/120

M1/150

M1 N/C. Includes programmable overrun and interval operation.

Customisable to individual user requirements with extensive coding functions. In addition to the overrun (optionally 6, 10, 15, 21 minutes), the startup delay can also be set to 0, 45, 90 or 120 seconds.

Moreover, the optional interval operation (0, 8, 12, 24 hours) ensures the best indoor air quality even in your absence.

Ideal for:
Rooms with normal or lower usage frequency.



M1/100

M1/120

M1/150



M1 F.

With intelligent automatic humidity control.

For barrier-free automatic operation – without user intervention.

A complex and unique combination of precise sensors and advanced control electronics detects and eliminates rising humidity at an early stage.

See also p. “M1 F - Humidity protection” on page 10.

M1 P.

With presence detector.

Detects people entering by means of an integrated infrared sensor and automatically activates barrier-free.

If movement is detected again within 6 minutes, the operating time is extended accordingly. After leaving the room, a 6-minute overrun begins.

M1 0-10 V.

With stepless speed control.

Universal areas of application through the combination with CO₂, VOC or temperature sensors, with the option to connect to a building management system (BMS). The min./max. speed is freely adjustable and stepless control via a potentiometer is also possible.

Control via three-step switch or stepless via universal control systems or electronic diff. pressure/temp. controllers.

Ideal for:

Rooms with high moisture levels.



M1/100

M1/120

M1/150

Ideal for:

Rooms with high usage frequency.



M1/100

M1/120

Ideal for:

Larger rooms with ventilation based on CO₂, VOC or temperature.

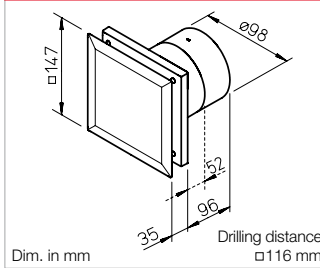


M1/150

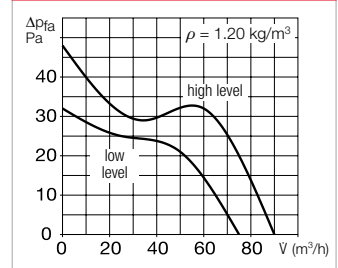
M1/100 and M1/100 black



Dim. M1/100 - M1/100 black



Fan curve M1/100 - M1/100 black



Premium class small room fans. The design and performance of the MiniVent M1/100 set new standards in the field of compact fans.

With its multi-award-winning design, MiniVent M1/100 blends in harmoniously in all environments. Even on the darkest tiles thanks to the deep black design version. The same applies to both models: The enclosed, well-designed facade completely prevents viewing of the fan clogging zone.

All M1/100 models come with 2 performance levels and tight-closing backdraught shutters as standard.

The noise level is extremely low thanks to Helios ultraSilence technology.

Available with turn-off delay mode and interval mode or barrier-free automatic functions, such as the presence detector or humidity control function. The humidity control function responds to the rate of humidity increase with intelligent electronics and effectively prevents mould formation.

Universally applicable for the ventilation of bathrooms, WCs and other small rooms.

■ Features

- Extremely low power consumption of just 5 Watts at $V = 75 \text{ m}^3/\text{h}$.
- Ultra quiet thanks to ultraSilence technology; just 25 dB(A) at $V = 75 \text{ m}^3/\text{h}$.
- Pressure performance: $60 \text{ m}^3/\text{h}$ volume flow at 31 Pa resistance. $90 \text{ m}^3/\text{h}$ free blowing, ΔP max. 45 Pa.
- In case of restricted space conditions, the M1/100 guide wheel can be easily removed. This reduces the installation depth from 96 to just 52 mm.
- Compact dimensions for universal flush-mounted installation in walls, shafts and ceilings with NW 100.

- All parts are made of high-quality plastic, colour: white or black.
- Ball bearings and motor are designed for continuous loads, constant output and lifelong functional reliability.
- Motor with thermal overload protection, maintenance-free and radio interference-free.
- Applicable in wet room zone 1 according to DIN VDE 0100-701.
- Electrical supply line can be surface or flush-mounted.
- Practical quick installation due to screwless connection terminals.

Type	M1/100	M1/100 black	M1/100 N/C	M1/100 N/C black	M1/100 F	M1/100 F black	M1/100 P	M1/100 P black
Ref. no.	06171	40770	06172	40771	06175	40772	06174	40773
Version	Standard model with two speed levels		Like M1/100, with codeable turn-off delay & interval model ¹⁾		Like M1/100, with humidity control function ¹⁾⁴⁾		Like M1/100, with presence detector ¹⁾	
Colour	white	black	white	black	white	black	white	black
Turn-off delay time, min. optional at high or low level	—		6, 10, 15, 21 adjustable		6, 12, 18, 24 adjustable ³⁾		6	
Interval mode, hours optional at high or low level	—		0, 8, 12, 24 adjustable		—		—	
Start-up delay approx. sec.	—		0, 45, 90, 120		0 or 45 ³⁾		—	
Inner shutter, removable	Yes		Yes		Yes		Yes	
Flow rate free blowing m^3/h	90 / 75		90 / 75		90 / 75		90 / 75	
Impeller \varnothing mm	92		92		92		92	
Speed min^{-1}	2650 / 2250		2650 / 2250		2650 / 2250		2650 / 2250	
Voltage / Frequency 50 Hz	230 V		230 V		230 V		230 V	
Power consumption W	9 / 5		9 / 5		9 / 5		9 / 5	
Rated current A	0.06 / 0.04		0.06 / 0.04		0.06 / 0.04		0.06 / 0.04	
Sound pressure level dB(A) at 3 m^2	30 / 25		30 / 25		30 / 25		30 / 25	
Wiring diagram no.	915		917		919		918	
Electrical supply line NYM-0 in mm^2	3 x 1.5		4 x 1.5		4 x 1.5		3 x 1.5	
Protection class II, protection category	IP45		IP45		IP45		IP45	
Max. air flow temperature	+40 °C		+40 °C		+40 °C		+40 °C	
Weight approx. kg	0.80		0.80		0.80		0.80	

¹⁾ All electronic functions optionally adjustable at high or low performance level.

²⁾ Free field conditions.

³⁾ For manual operation.

⁴⁾ Limit value 60, 70, 80, 90 % adjustable.

Beautiful and clean

Air flows into the M1 from all sides. The front facade is completely closed and elegantly conceals the bothersome clogging zone in conventional compact fans.

The M1 blends in harmoniously in all environments. The smooth-surfaced front facade always remains easy to maintain and clean.



Intelligent humidity control function

The humidity control function of type M1/100 F.. automatically activates the fan depending on the humidity increase rate. The turn-off delay time depends on the room humidity reduction. In case of constantly high humidity, the fan will automatically switch to interval mode.



Rapid connection

The electrical connection is enormously facilitated by a generously dimensioned, circumferential cable storage space on the back of the unit, the full rotatability of the casing and screwless terminals. Long-life ball bearings for 40.000 operating hours allow installation in any position, even directly in the ceiling.



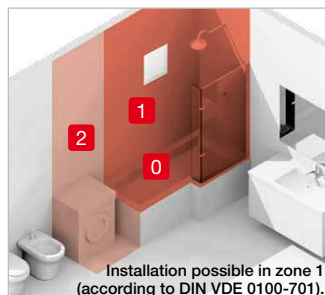
Flexible installation depth

The removeable guide wheel reduces the installation depth from 96 to 52 mm. Installation possible with or without backdraught shutters.



Applicable in wet room zone 1

MiniVent M1/100.. complies with jet water protection IPX5, insulation protection class II and may be used in zone 1 according to DIN VDE 0100-701.



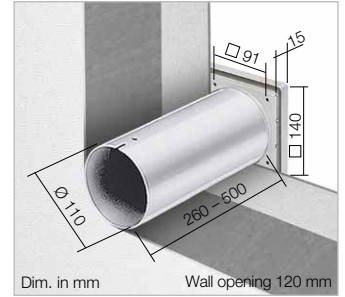
Wall mounting kit

WES 100 Ref. no. 00717

Two telescoping plastic ducts serve as the wall/feed duct; for flush-mounted installation.

External wall connection possible in two ways:

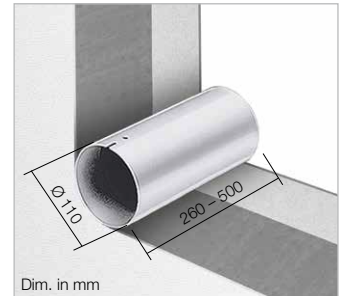
- Frame with three blades as an automatic shutter.
- Use of the frame with fixed grille. All parts made of high-quality plastic.



Telescopic wall sleeve

TWH 100 Ref. no. 06352

Like WES, but without shutter and grille.



Operating and speed switch

0-1-2 for standard model

MVB Ref. no. 06091

With functions On/Off, low and high speed.

Load capacity 3 A (ind.)

Voltage 230 V, 1~, 50/60 Hz

Protection category IP 30

Installation in standard flush-mounted box

Dimensions mm W 80 x H 80 x D 15

Weight approx. 0.1 kg



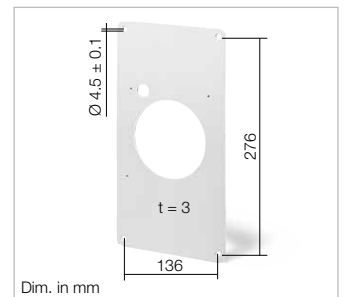
Mounting panel

MBR 90/160/300 Ref. no. 00281

Made of high-quality, impact-resistant plastic, colour: alpine white. Ideal for use in renovations.

All M1/100 models can be easily installed in existing, rectangular shaft openings with the mounting panel.

The panel can be fully painted or wallpapered in order to hide it.

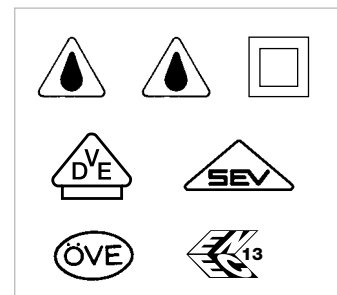
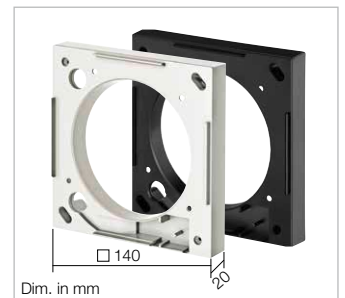


Mounting flange

MF 100 Ref. no. 06188

MF 100 black Ref. no. 40817

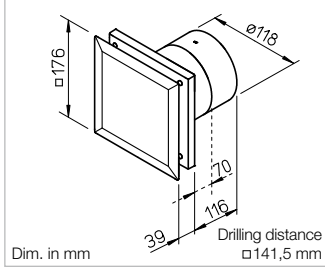
For installation depth reduction in case of thin walls, narrow shafts and short bends. Also suitable for the installation of a drawcord switch (accessories). If required, multiple MF 100 can be connected to each other. Available in white and black.



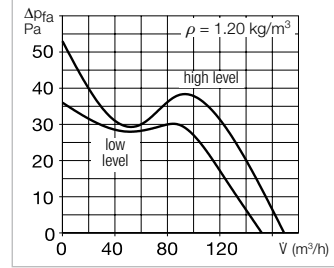
M1/120



Dimensions M1/120



Performance curve M1/120



Premium class small room fans. The design and performance of the MiniVent M1/120 set new standards in the field of compact fans.

With its multi-award-winning design, the MiniVent M1/120 blends in harmoniously in all environments. The enclosed, well-designed facade completely prevents viewing of the fan clogging zone.

All M1/120 models come with 2 performance levels and tight-closing backdraught shutters as standard.

The noise level is extremely low thanks to Helios ultraSilence technology.

Available with turn-off delay mode and interval mode or barrier-free automatic functions, such as the presence detector or humidity control function. The humidity control function responds to the rate of humidity increase with intelligent electronics and effectively prevents mould formation.

Universally applicable for the ventilation of small to medium-sized rooms in private, commercial and industrial buildings.

Features

- Extremely low power consumption of just 10 Watts at $\dot{V} = 150 \text{ m}^3/\text{h}$.
- Ultra quiet thanks to ultraSilence technology; just 32 dB(A) at $\dot{V} = 150 \text{ m}^3/\text{h}$.
- Pressure performance: 120 m^3/h volume flow at 31 Pa resistance. 170 m^3/h free blowing, ΔP max. 53 Pa.
- In case of restricted space conditions, the M1/120 guide wheel can be easily removed. This reduces the installation depth from 116 to just 70 mm.
- Compact dimensions for universal flush-mounted installation in walls, shafts and ceilings with NW 120/125.

- All parts are made of high-quality plastic, colour: white.
- Ball bearings and motor are designed for continuous loads, constant output and lifelong functional reliability.
- Motor with thermal overload protection, maintenance-free and radio interference-free.
- Applicable in wet room zone 1 according to DIN VDE 0100-701.
- Electrical supply line can be surface or flush-mounted.
- Practical quick installation due to screwless connection terminals.

Type	M1/120	M1/120 N/C	M1/120 F	M1/120 P
Ref. no.	06360	06361	06364	06363
Version	Standard model with two speed levels	Like M1/120, with codeable turn-off delay & interval model ¹⁾	Like M1/120, with humidity control function ¹⁾⁴⁾	Like M1/120, with presence detector ¹⁾
Turn-off delay time, min. optional at high or low level	—	6, 10, 15, 21 adjustable	6, 12, 18, 24 adjustable ³⁾	6
Interval mode, hours optional at high or low level	—	0, 8, 12, 24 adjustable	—	—
Start-up delay approx. sec.	—	0, 45, 90, 120	0 or 45 ³⁾	—
Inner shutter, removable	Yes	Yes	Yes	Yes
Flow rate free blowing m^3/h	170 / 150	170 / 150	170 / 150	170 / 150
Impeller \varnothing mm	111	111	111	111
Speed min^{-1}	2350 / 2050	2350 / 2050	2350 / 2050	2350 / 2050
Voltage / Frequency 50 Hz	230 V	230 V	230 V	230 V
Power consumption W	13 / 10	13 / 10	13 / 10	13 / 10
Rated current A	0.09 / 0.08	0.09 / 0.08	0.09 / 0.08	0.09 / 0.08
Sound pressure level dB(A) at 3 m^2	36 / 32	36 / 32	36 / 32	36 / 32
Wiring diagram no.	915	917	919	918
Electrical supply line NYM-0 in mm^2	3 x 1.5	4 x 1.5	4 x 1.5	3 x 1.5
Protection class II, protection category	IP45	IP45	IP45	IP45
Max. air flow temperature	+40 °C	+40 °C	+40 °C	+40 °C
Weight approx. kg	1.05	1.05	1.05	1.05

¹⁾ All electronic functions optionally adjustable at high or low performance level.

²⁾ Free field conditions.

³⁾ For manual operation.

⁴⁾ Limit value 60, 70, 80, 90 % adjustable.

■ **Beautiful and clean**

Air flows into the M1 from all sides. The front facade is completely closed and elegantly conceals the bothersome clogging zone in conventional compact fans.

The M1 blends in harmoniously in all environments. The smooth-surfaced front facade always remains easy to maintain and clean.



■ **Intelligent humidity control function**

The humidity control function of type M1/120 F automatically activates the fan depending on the humidity increase rate. The turn-off delay time depends on the room humidity reduction. In case of constantly high humidity, the fan will automatically switch to interval mode.



■ **Rapid connection**

The electrical connection is enormously facilitated by a generously dimensioned, circumferential cable storage space on the back of the unit, the full rotatability of the casing and screwless terminals.

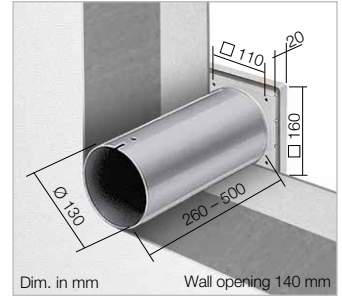
Long-life ball bearings for 40.000 operating hours allow installation in any position, even directly in the ceiling.



Wall mounting kit

WES 120 Ref. no. 00486

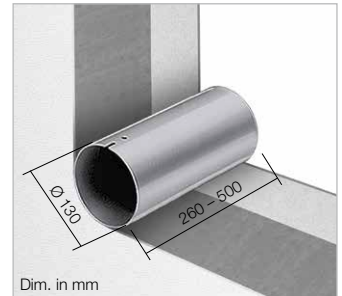
Two telescoping plastic ducts serve as the wall/feed duct. The external wall connection is carried out by using the frame with blades as an automatic shutter.



Telescopic wall sleeve

TWH 120 Ref. no. 06353

Like WES, but without shutter.



Operating and speed switch
0-1-2 for standard model

MVB Ref. no. 06091

With functions On/Off, low and high speed.

Load capacity 3 A (ind.)

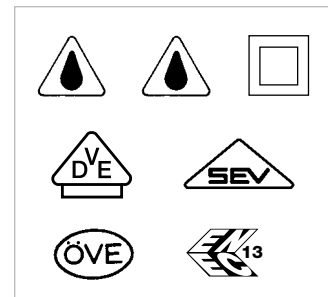
Voltage 230 V, 1~, 50/60 Hz

Protection category IP 30

Installation in standard flush-mounted box

Dimensions mm W 80 x H 80 x D 15

Weight approx. 0.1 kg



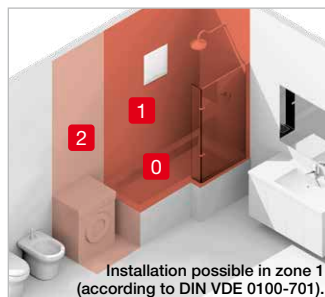
■ **Flexible installation depth**

The removeable guide wheel reduces the installation depth from 116 to 70 mm. Installation possible with or without back-draught shutters.

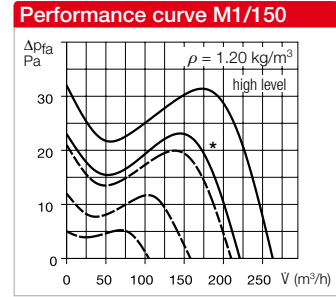
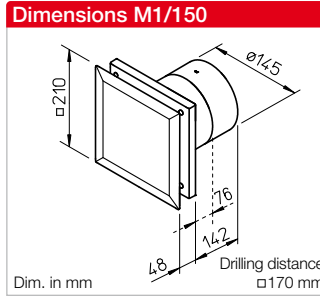


■ **Applicable in wet room zone 1**

MiniVent M1/120 complies with jet water protection IPX5, insulation protection class II and may be used in zone 1 according to DIN VDE 0100-701.



Installation possible in zone 1 (according to DIN VDE 0100-701).



Premium class small room fans. The design and performance of the MiniVent M1/150 set new standards in the field of compact fans. With its multi-award-winning design, the M1/150 blends in harmoniously in all environments. The enclosed, well-designed facade completely prevents viewing of the fan clogging zone. All M1/150 models come with high efficiency EC drive technology, with 2 performance levels or continuously variable and tight-closing backdraught shutters as standard. The noise level is extremely low thanks to Helios ultraSilence technology. Available with turn-off delay mode and interval mode, continuously variable speed control or barrier-free automatic functions, such as the humidity control function. The humidity control function

responds to the rate of humidity increase with intelligent electronics and effectively prevents mould formation. Universally applicable for the ventilation of medium-sized rooms in private, commercial and industrial buildings.

Features

- Extremely low power consumption of just 6 Watts at $\dot{V} = 220 \text{ m}^3/\text{h}$.
- Ultra quiet thanks to ultraSilence technology; just 35 dB(A) at $\dot{V} = 220 \text{ m}^3/\text{h}$.
- Pressure performance: $180 \text{ m}^3/\text{h}$ volume flow at 31 Pa resistance. $260 \text{ m}^3/\text{h}$ free blowing, ΔP max. 33 Pa.
- In case of restricted space conditions, the M1/150 guide wheel can be easily removed. This reduces the installation

depth from 142 to just 76 mm.

- Compact dimensions for universal flush-mounted installation in walls, shafts and ceilings with NW 150/160
- All parts are made of high-quality plastic, colour: white.
- Ball bearings and motor are designed for continuous loads, constant output and lifelong functional reliability.
- Motor with thermal overload protection, maintenance-free and radio interference-free.
- Applicable in wet room zone 1 according to DIN VDE 0100-701.
- Electrical supply line can be surface or flush-mounted.
- Practical quick installation due to screwless connection terminals.
- The 0-10 V type offers a wide range of applications in combination with CO_2 , VOC or temperature sensors. The min./max.

speed is fully adjustable and continuously variable control via potentiometer is also possible. Control takes place via three level switches or continuously variably via universal control systems or electronic differential pressure/temperature controllers. A potential-free relay outlet is available as standard for the connection of an electrical shutter.

Type	M1/150	M1/150 N/C	M1/150 F	M1/150 0-10 V
Ref. no.	06041	06042	06043	06044
Version	Standard model with two speed levels	Like M1/150, with codeable turn-off delay & interval model ¹⁾	Like M1/150, with humidity control function ¹⁾⁴⁾	Continuously variable control
Turn-off delay time, min., optional at high, low or both levels	—	6, 10, 15, 21 adjustable	6, 12, 18, 24 adjustable ³⁾	6
Interval mode, hours, optional at high, low or both levels	—	0, 8, 12, 24 adjustable	—	—
Start-up delay approx. sec.	—	0, 45, 90, 120	0, 45, 90, 120 ³⁾	—
Inner shutter, removable	Yes	Yes	Yes	Yes
Flow rate free blowing m^3/h	260 / 220	260 / 220	260 / 220	260-50
Impeller \varnothing mm	137	137	137	137
Speed min^{-1}	1900 / 1600	1900 / 1600	1900 / 1600	1900 -980
Voltage / Frequency 50 Hz	230 V	230 V	230 V	230 V
Power consumption W	8 / 4.5	8 / 5	9 / 6	9 / min. 3.5
Rated current A	0.08 / 0.06	0.10 / 0.09	0.08 / 0.06	0.08 / 0.035
Sound pressure level dB(A) at 3 m ²⁾	39 / 35	39 / 35	39 / 35	max. 39
Wiring diagram no.	1080	1081	1082	1083
Electrical supply line NYM-0 in mm ²	3 x 1.5	4 x 1.5	4 x 1.5	2 x 1.5 ⁵⁾
Protection class II, protection category	IP45	IP45	IP45	IP45
Max. air flow temperature	+40 °C	+40 °C	+40 °C	+40 °C
Weight approx. kg	1.20	1.20	1.20	1.20

¹⁾ All codeable times and electronic functions optionally adjustable at high, low or both performance levels.

²⁾ Free field conditions.

³⁾ For manual operation.

⁴⁾ Limit values from 40-90% continuously variably adjustable.

⁵⁾ Additional connection cable provided for relay output.

Beautiful and clean

Air flows into the M1 from all sides. The front facade is completely closed and elegantly conceals the bothersome clogging zone in conventional compact fans.

The M1 blends in harmoniously in all environments. The smooth-surfaced front facade always remains easy to maintain and clean.



Intelligent humidity control function

The humidity control function of type M1/150 F automatically activates the fan depending on the humidity increase rate. The turn-off delay time depends on the room humidity reduction. In case of constantly high humidity, the fan will automatically switch to interval mode.



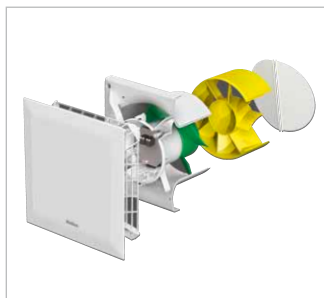
Rapid connection

The electrical connection is enormously facilitated by a generously dimensioned, circumferential cable storage space on the back of the unit, the full rotatability of the casing and screwless terminals. Long-life ball bearings for 40.000 operating hours allow installation in any position, even directly in the ceiling.



Flexible installation depth

The removeable guide wheel reduces the installation depth from 142 to 76 mm. Installation possible with or without back-draught shutters.



Applicable in wet room zone 1

MiniVent M1/150 complies with jet water protection IPX5, insulation protection class II and may be used in zone 1 according to DIN VDE 0100-701.



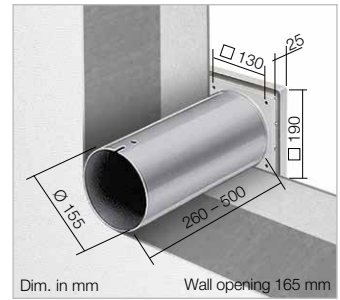
Wall mounting kit

WES 150 Ref. no. 00537

Two telescoping plastic ducts serve as the wall/feed duct; for flush-mounted installation.

External wall connection possible in two ways:

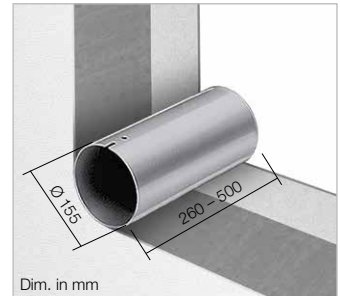
- a) Frame with three blades as an automatic shutter.
- b) Use of the frame with fixed grille. All parts made of high-quality plastic.



Telescopic wall sleeve

TWH 150 Ref. no. 06354

Like WES, but without shutter and grille.



Operating and speed switch

0-1-2 for standard model

MVB Ref. no. 06091

With functions On/Off, low and high speed.
Load capacity 3 A (ind.)
Voltage 230 V, 1~, 50/60 Hz
Protection category IP 30
Installation in standard flush-mounted box
Dimensions mm W 80 x H 80 x D 15
Weight approx. 0.1 kg



Speed switch for

M1/150 N/C and M1/150 F

DSEL 2 Ref. no. 01306

With functions On/Off, low and high speed.
Load capacity 3 A (ind.)
Voltage 230 V, 1~, 50/60 Hz
Protection category IP 30
Installation in standard flush-mounted box
Dimensions mm W 80 x H 80 x D 15
Weight approx. 0.1 kg



Speed potentiometer for M1/150

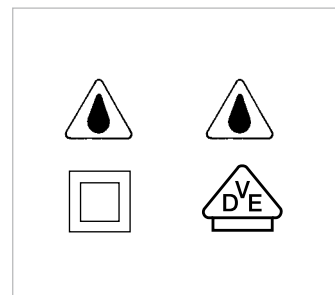
0-10 V

PU 10 Ref. no. 01734

For flush-mounted installation.
Installation in standard flush-mounted box
Dim. mm W 80 x H 80 x D 21 protr.

PA 10 Ref. no. 01735

For surface-mounted installation.
Casing Surface installation
Dimensions mm W 80 x H 80 x D 65





Helios Ventilatoren GmbH + Co KG · Lupfenstraße 8 · 78056 Villingen-Schwenningen · Germany
Phone +49 77 20 / 606 - 0 · export@heliosventilatoren.de · www.heliosventilatoren.de

Copyright ©: Helios Ventilatoren GmbH + Co KG, 78056 VS-Schwenningen, Germany. Certified according to ISO 9001/2015 and ISO 14001/2015.
Subject to technical modifications. Illustrations and information are non-binding. Document no. 86 246.844 / 07.25