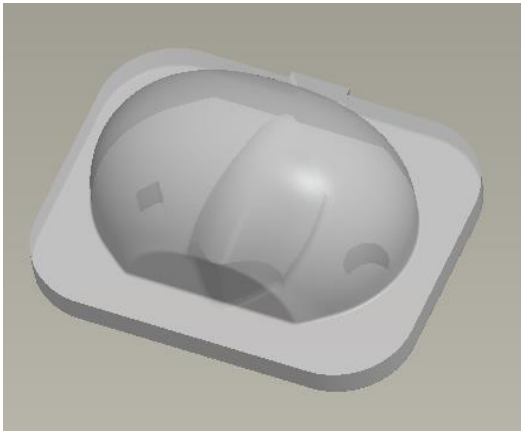
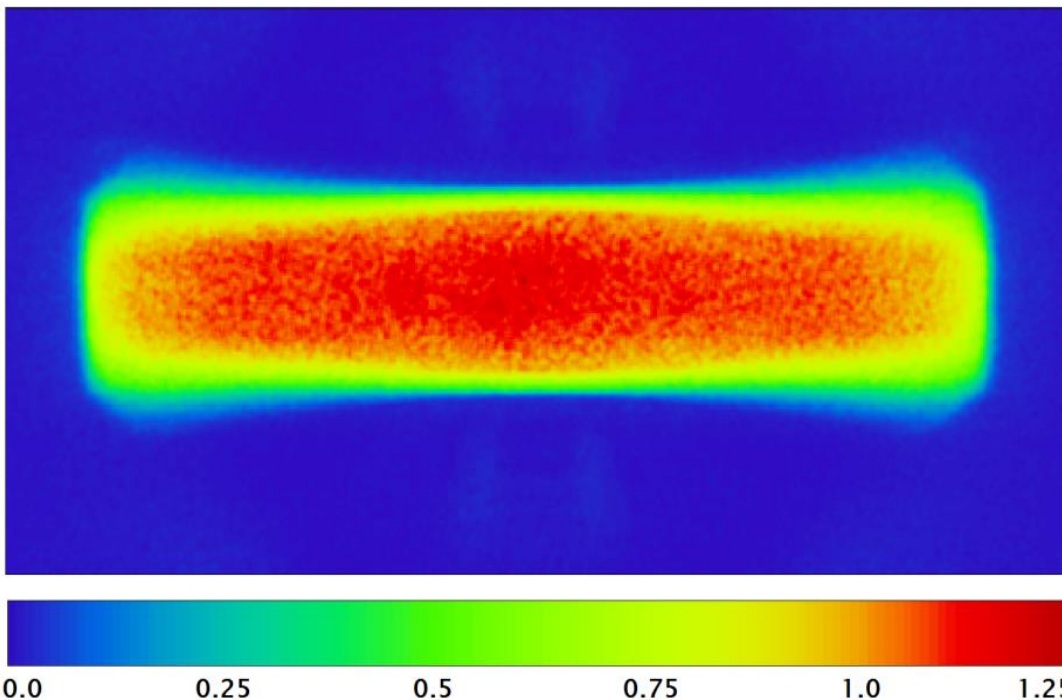


0.8x4 Rectangular Beam Optic - Part No. 290



- Designed for High Power Lambertian LED sources.
- High light collection efficiency of >82%
- Moulded in V2 flammability grade Polycarbonate for thermal stability and system durability.
- Part of the Polymer Optics “Free-Form LED Optics”® range.
- Suitable for escape route & emergency lighting of corridors and other large areas.

Designed to give even illuminance this 4x0.8 optic will produce a rectangular beam which illuminates an area 4x the mounting height in length and 0.8x the mounting height in width.



**False Colour
Map of
Illuminance
Profile**

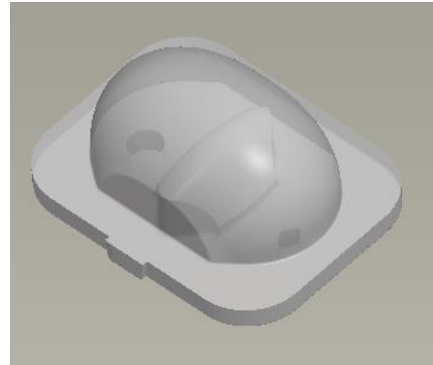
Average illuminance mounted at a height of 2.5m with a 25 lumen 1mm die size Lambertian LED = 1 Lux

In order to determine if the particular beam properties and performance of this optic are suitable for your application with your chosen LED type, POL suggests that you obtain samples from POL or their distributors for your own product testing, as properties may vary with different LED types.

Performance values given are typical values and will vary dependent on LED type, binning, colour and drive profile.

Due to continuous product improvement, POL reserve the right to change specifications without notice.

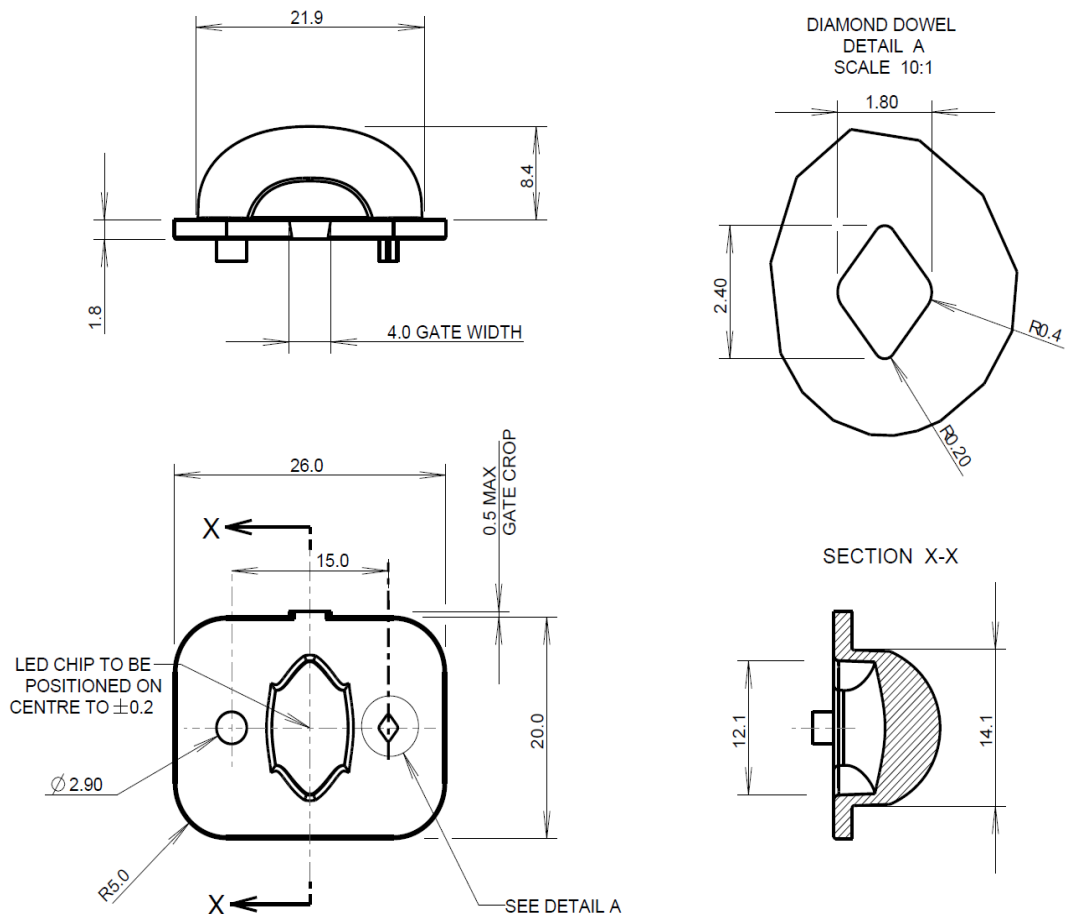
0.8x4 Rectangular Beam Optic - Part No. 290



Typical dimensional tolerances to +/-0.2mm

© 2010 POLYMER OPTICS LTD

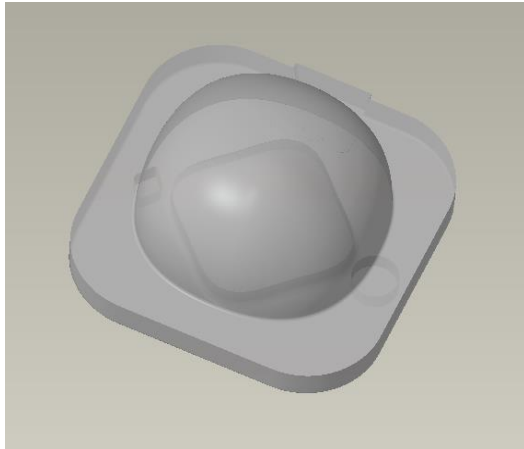
MATERIAL: POLYCARBONATE



Performance values given are typical values and will vary dependant on LED type, binning, colour and drive profile.

Due to continuous product improvement, POL reserve the right to change specifications without notice.

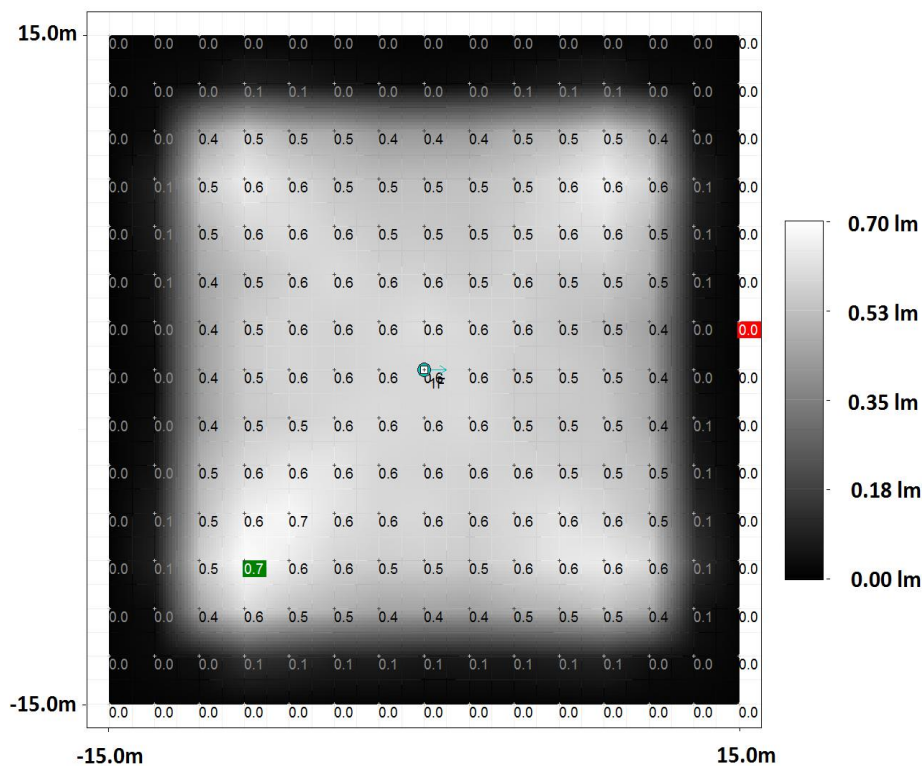
Narrow Angle Square Area Optic - Part No. 532



- Illuminates a square area width 2.4x mounting height.
- Designed for High Power Lambertian LED sources.
- Exceptionally uniform illumination giving maximum to minimum illumination ratios as low as 1.2:1
- Moulded in V2 flammability grade Polycarbonate for thermal stability and system durability.
- Part of the Polymer Optics "Free-Form LED Optics"[®] range.
- Suitable for emergency lighting of large areas.

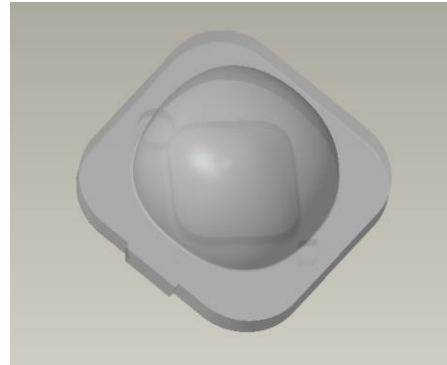
Designed to give even illuminance over a square area using a single LED. Recommended for ceiling luminaires mounted in a square pattern separated by up to 2.4x the mounting height. For example a square pattern of luminaires mounted at 9m and separated by 21m will require a Luxeon Rebel ES LED with an output of only 275 lumens to give a minimum 0.5 Lux on the floor.

Measured Illuminance Map Of 275 Lumen Output Luxeon Rebel ES LED Mounted At 6m Above Floor Level



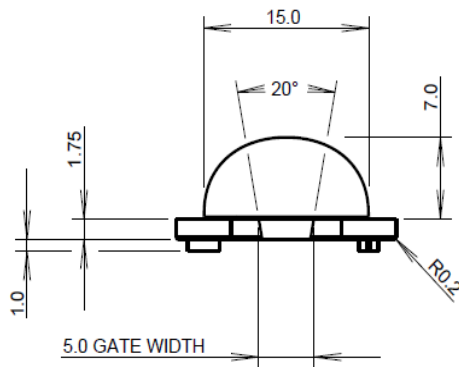
In order to determine if the particular beam properties and performance of this optic are suitable for your application with your chosen LED type, POL suggests that you obtain samples from POL or their distributors for your own product testing, as the illumination will vary with different LED types.

Narrow Angle Square Area Optic - Part No. 532

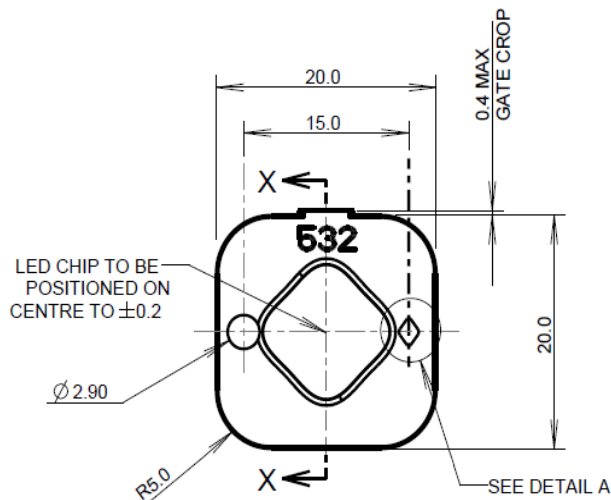
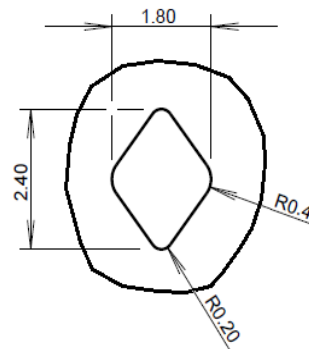


Typical dimensional tolerances to +/-0.2mm

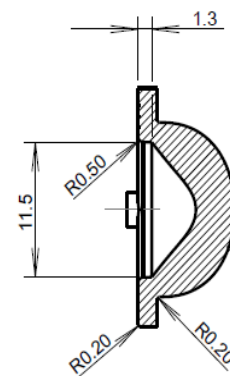
MATERIAL: POLYCARBONATE



DIAMOND DOWEL
DETAIL A
SCALE 10:1



SECTION X-X

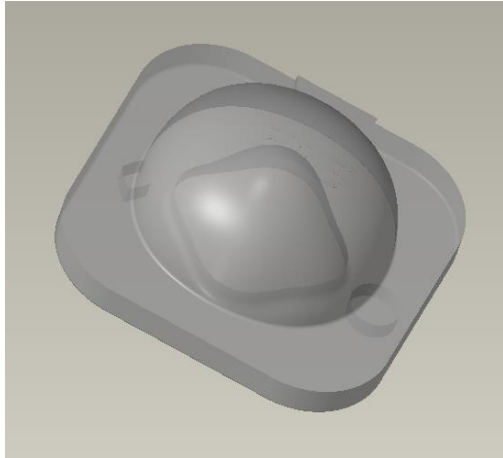


© 2015 POLYMER OPTICS LTD

Performance values given are typical values and actual values will depend on LED type, light flux and colour .

Due to continuous product improvement, POL reserve the right to change specifications without notice.

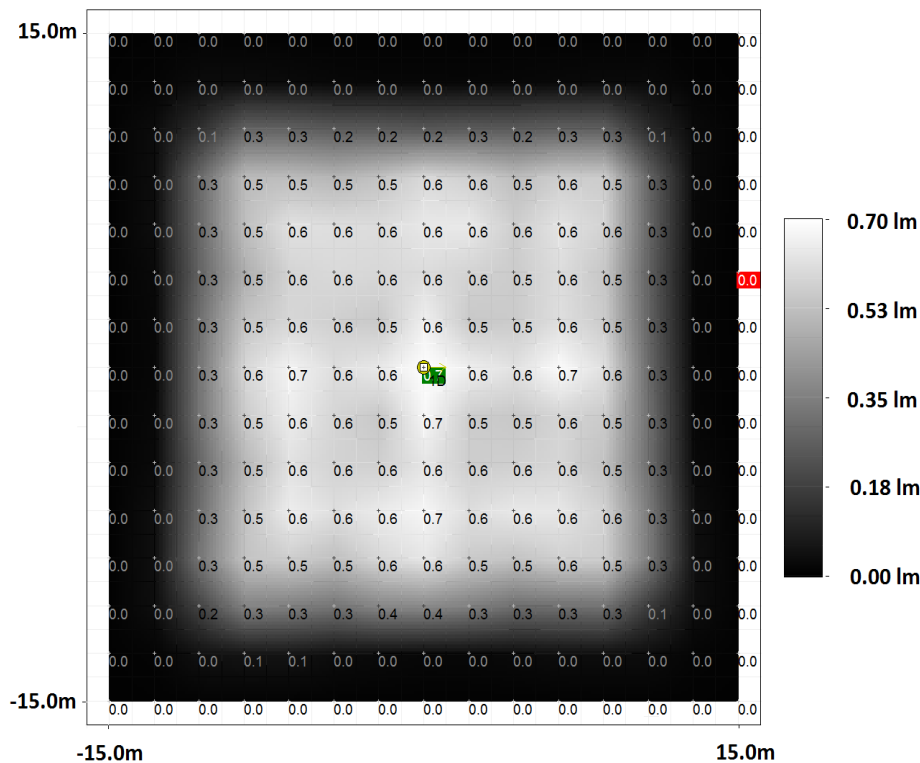
Medium Angle Square Area Optic - Part No. 535



- Illuminates a square area width 3.33x mounting height.
- Designed for High Power Lambertian LED sources.
- Exceptionally uniform illumination giving maximum to minimum illumination ratios as low as 1.4:1
- Moulded in V2 flammability grade Polycarbonate for thermal stability and system durability.
- Part of the Polymer Optics "Free-Form LED Optics"[®] range.
- Suitable for emergency lighting of large areas.

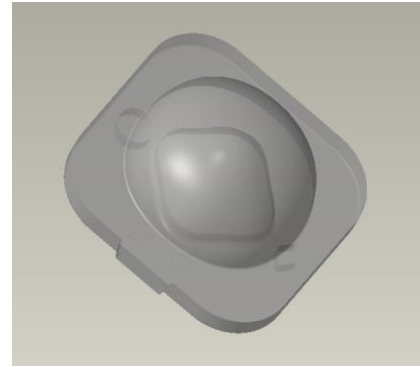
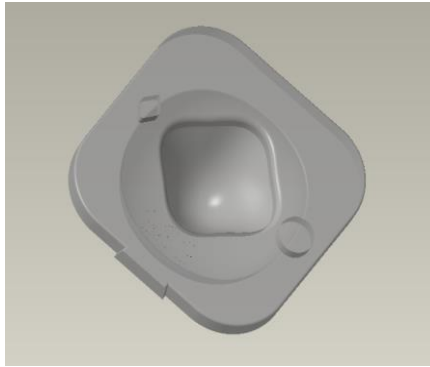
Designed to give even illuminance over a square area using a single LED. Recommended for ceiling luminaires mounted in a square pattern separated by up to 3.33x the mounting height. For example a square pattern of luminaires mounted at 6m and separated by 20m will require a Luxeon Rebel ES LED with an output of only 240 lumens to give a minimum 0.5 Lux on the floor.

Measured Illuminance Map Of 240 Lumen Output Luxeon Rebel ES LED Mounted At 6m Above Floor Level



In order to determine if the particular beam properties and performance of this optic are suitable for your application with your chosen LED type, POL suggests that you obtain samples from POL or their distributors for your own product testing, as the illumination will vary with different LED types.

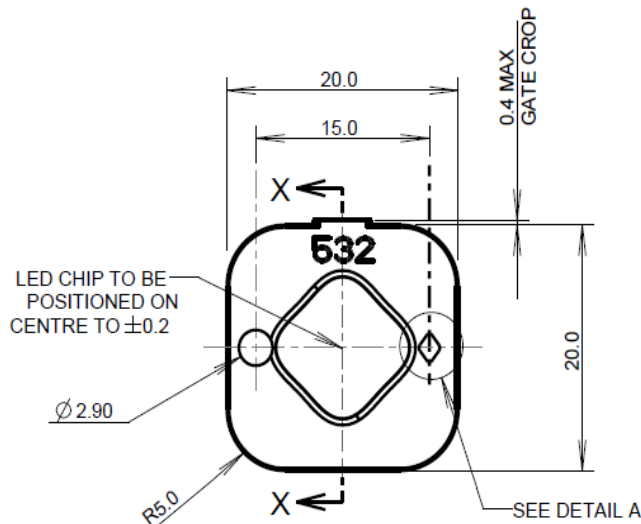
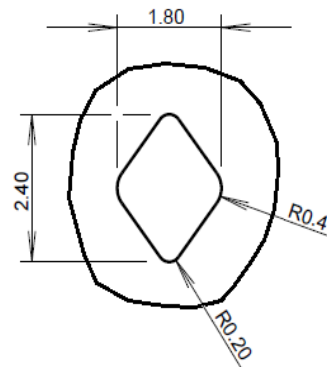
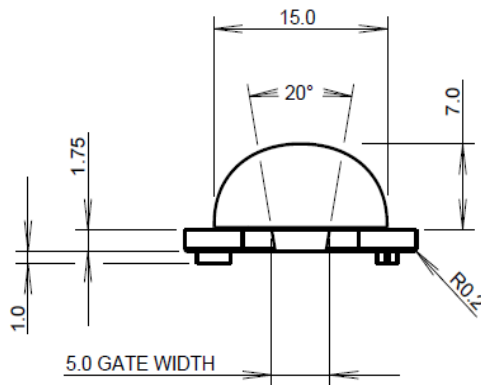
Medium Angle Square Area Optic - Part No. 535



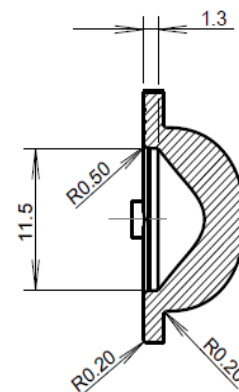
Typical dimensional tolerances to +/-0.2mm

MATERIAL: POLYCARBONATE

DIAMOND DOWEL
DETAIL A
SCALE 10:1



SECTION X-X

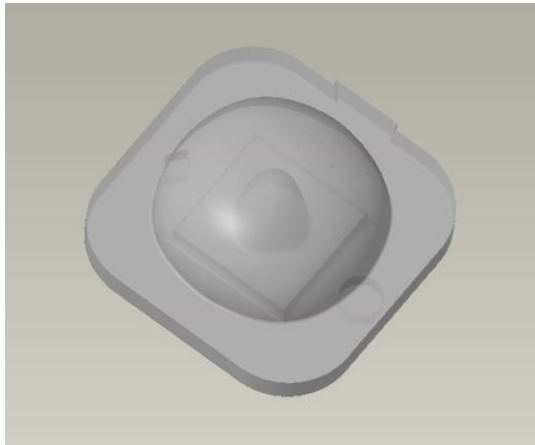


© 2015 POLYMER OPTICS LTD

Performance values given are typical values and actual values will depend on LED type, light flux and colour .

Due to continuous product improvement, POL reserve the right to change specifications without notice.

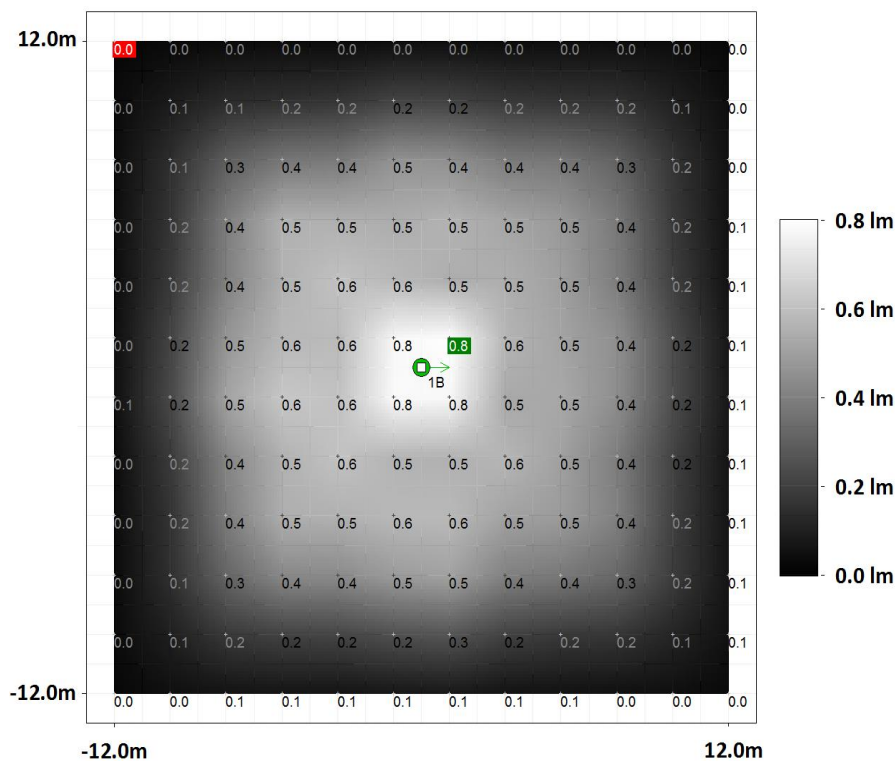
Wide Angle Square Area Optic - Part No. 536



- Illuminates a square area width 5.5x mounting height.
- Designed for High Power Lambertian LED sources.
- Exceptionally uniform illumination giving maximum to minimum illumination ratios as low as 1.6:1
- Moulded in V2 flammability grade Polycarbonate for thermal stability and system durability.
- Part of the Polymer Optics “Free-Form LED Optics”® range.
- Suitable for emergency lighting of large areas.

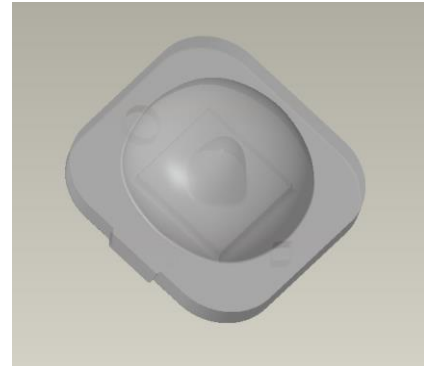
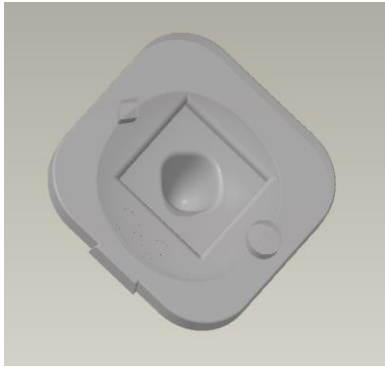
Designed to give even illuminance over a square area using a single LED. Recommended for ceiling luminaires mounted in a square pattern separated by up to 5.5x the mounting height. For example a square pattern of luminaires mounted at 3m and separated by 16.5m will require a Luxeon Rebel ES LED with an output of only 165 lumens to give a minimum 0.5 Lux on the floor.

Measured Illuminance Map Of 165 Lumen Output Luxeon Rebel ES LED Mounted At 3m Above Floor Level



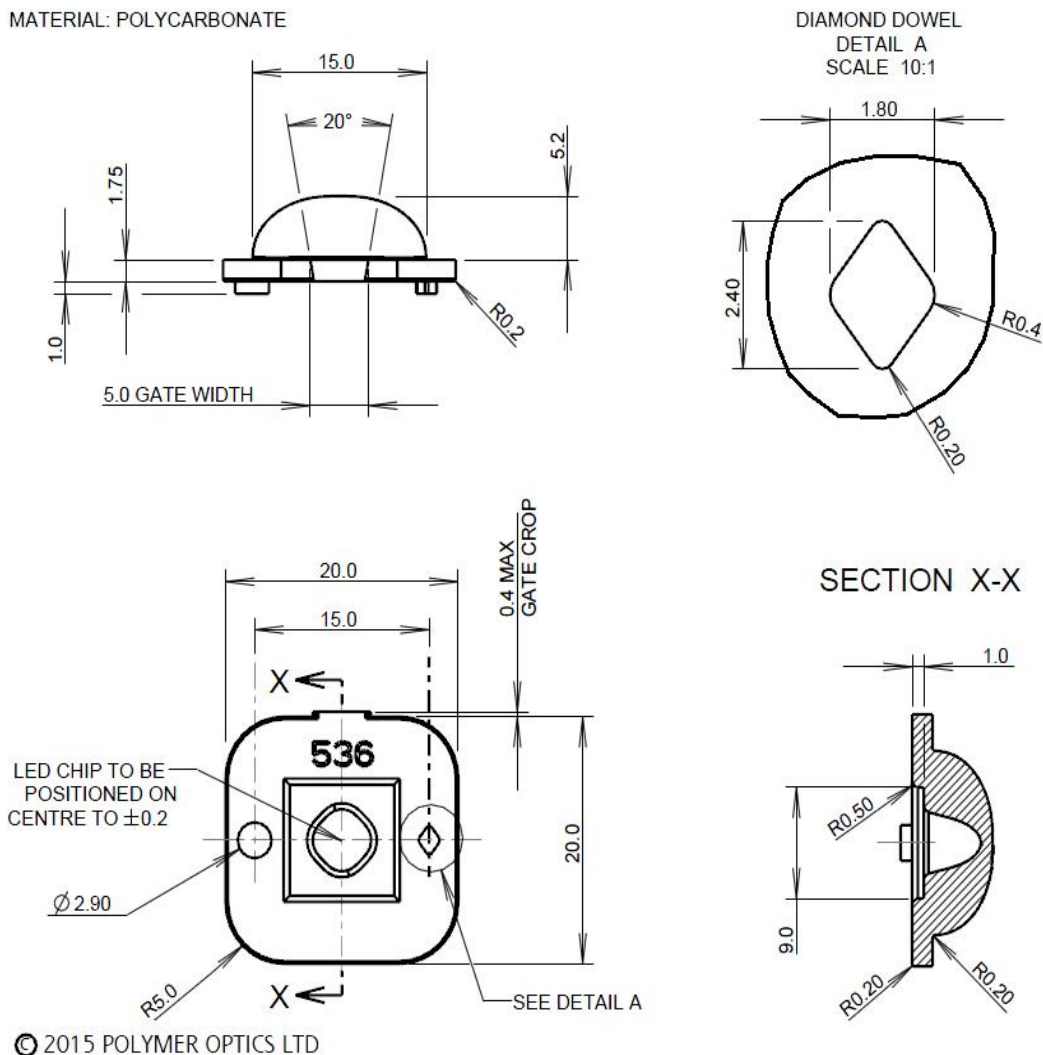
In order to determine if the particular beam properties and performance of this optic are suitable for your application with your chosen LED type, POL suggests that you obtain samples from POL or their distributors for your own product testing, as the illumination will vary with different LED types.

Wide Angle Square Area Optic - Part No. 536



Typical dimensional tolerances to +/-0.2mm

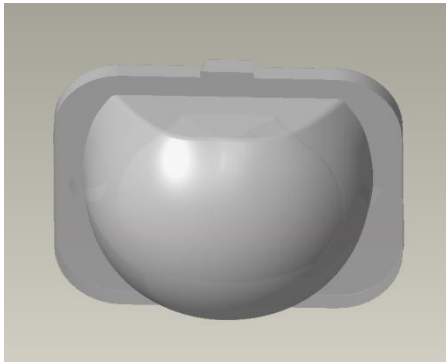
MATERIAL: POLYCARBONATE



Performance values given are typical values and actual values will depend on LED type, light flux and colour .

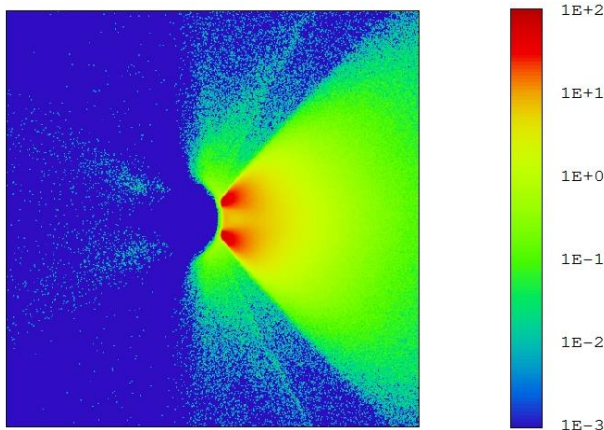
Due to continuous product improvement, POL reserve the right to change specifications without notice.

Low Level Illumination Optic - Part No. 808



- Designed for High Power Lambertian LED sources like Luxeon TX, Luxeon Rebel, Cree XP-G2 & Cree XP-L
- High light collection efficiency of >82%
- Moulded in V2 flammability grade Polycarbonate for thermal stability and system durability
- Part of the Polymer Optics “Free-Form LED Optics”[®] range
- Suitable for low level Bollard’s and walk way lighting
- 90 deg beam output from a single optic

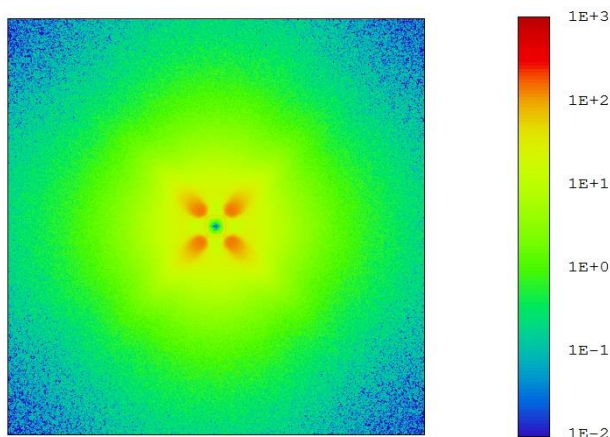
False Colour Map of Illuminance Profile



Illumination range optimised for 5x mounting height.

Can be used for in both square and asymmetrical illumination patterns.

Logarithmic False Colour Intensity Plot

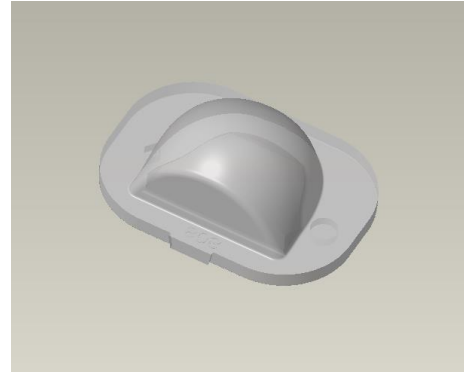


4 optics can be spaced at 90° intervals to give a complete 360° coverage.

Performance values given are typical values and will vary dependent on LED type, binning, colour and drive profile.

Due to continuous product improvement, POL reserve the right to change specifications without notice.

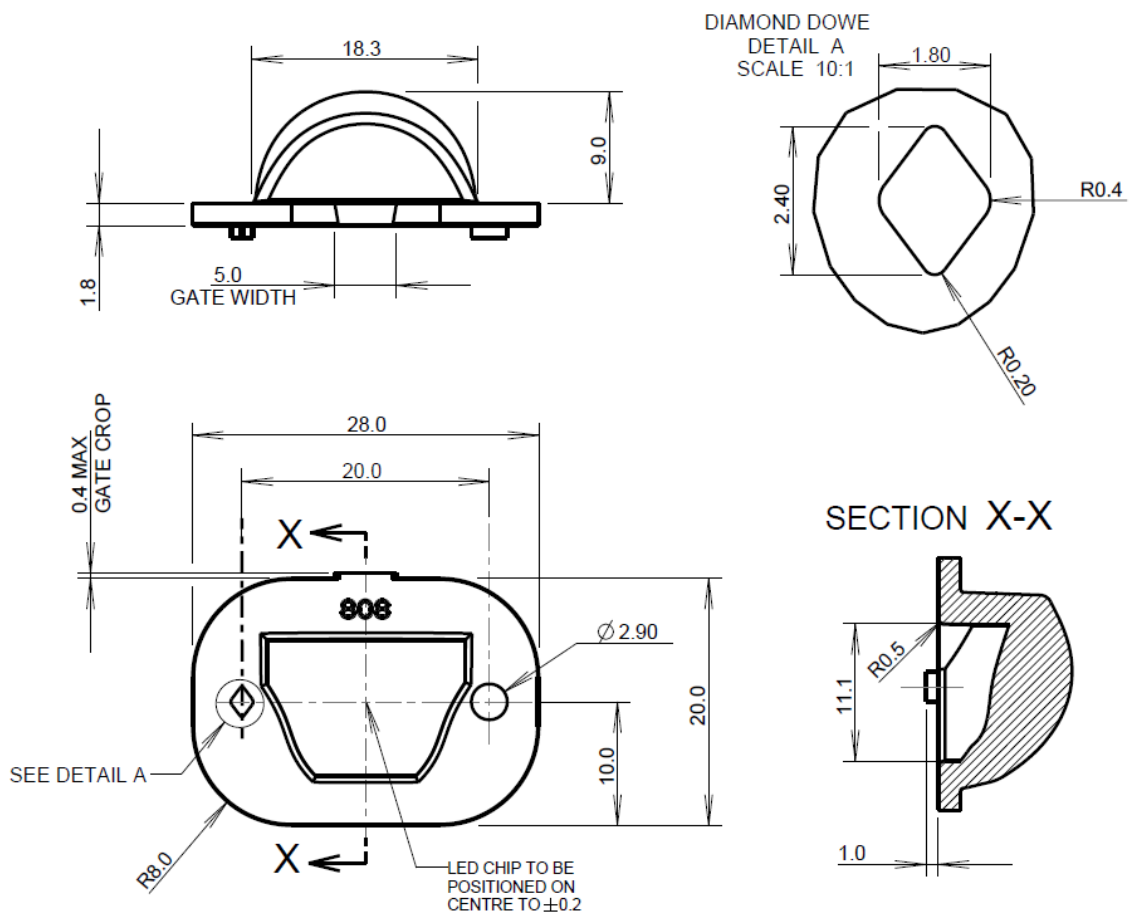
Low Level Illumination Optic - Part No. 808



Typical dimensional tolerances to $\pm 0.2\text{mm}$

© 2018 POLYMER OPTICS LTD

MATERIAL: V-2 FLAMMABILITY GRADE POLYCARBONATE



Performance values given are typical values and will vary dependent on LED type, binning, colour and drive profile.

Due to continuous product improvement, POL reserve the right to change specifications without notice.