

Product overview

# Cable management systems



## Cable entry systems & cable glands for cables with connectors



KEL-U



KVT-ER



KEL-FA

The patented cable entry systems enable the user to enter, seal and provide strain relief for pre-terminated and standard cables. The new split metric cable glands KVT-ER enables a quick and easy assembly which is great for retrofitting and maintenance.

Cables, pipes and conduits with various diameters can be routed due to a large variety of split grommets. When assembled correctly, the split grommets are held tightly within the frame. Correctly sizing the grommet to the cable diameter ensures a high degree of protection (up to IP66 / IP68 / UL type 4X) and provides strain relief.

### Advantages & benefits

- Certified ratings up to IP66 / IP68 / UL type 4X
- Warranty of pre-terminated cables remains
- Quick and easy assembly
- Retrofits, repairs and maintenance can be done quickly
- High cable density
- Wide variety of frames
- Suitable for industrial standard
- Strain relief according to EN 62444
- Vibration resistant



Split grommets



## Cable entry plates for cables without connectors



KEL-DPZ 16



KEL-DPFR



Also available with threaded bushings.



Conical shape on back provides additional sealing and strain relief

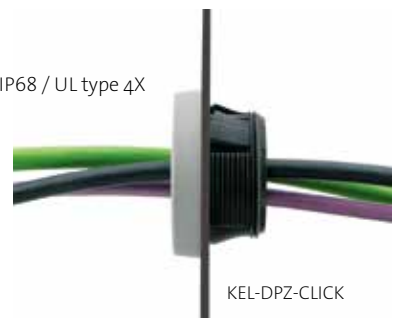
icotek offers a wide range of products that offer many advantages as an alternative to the classic cable glands for the routing of non-assembled cables.

Despite the compact and flat design the innovative icotek systems enable professional cable entry with high density (up to IP66 / IP68 / UL type 4X).

The high packing density is particularly suitable for applications in which many cables have to be routed with limited space.

### Advantages & benefits

- Space saving shape
- Double sealing certified protection class up to IP66 / IP68 / UL type 4X
- Rugged design
- High strain relief
- High cable density
- Wide variety of frames
- Assembly within seconds
- Suitable for industrial standard cut-outs
- Hygienic design – flat and smooth surface
- Halogen free, silicone free



KEL-DPZ-CLICK



KEL-DPR

\* Indoor use only

## Modular adapter system IMAS-CONNECT™

The IMAS-CONNECT™ adapter system from icotek is a modular grommet and adapter system mounting metric connectors, Keystone couplers, hose fittings, pressure compensation elements and many other connector types.

Using the adapter grommets the cable entry becomes a hybrid system. Assembled and non-assembled cables and hoses can be routed and at the same time the system serves as an interface for connectors.

### Advantages & benefits

- By utilising the IMAS grommet, connectors can be integrated directly into the cable entry frame
- Separate cut-outs for connectors are no longer necessary
- Space-saving solution
- Thread sizes M12 to M25 available (AT-M resp. AT-K-M)
- Snap-in assembly Keystone-couplers (AT-KS)
- Integration of push-pull connectors



AT-KS-AK



AT-PP



AT-KS



AT-K-M



AT-M



AT-FL

## EMC Shield clamps & earthing components

The SKL shield clamps offer an excellent option for EMC shielding due to various mounting variants, high flexibility in the cable diameter and extensive contacting of the cable shield.

The split cable gland EMC-KEL-DS and the split cable gland EMC-KVT-DS, has been metallised (galvanize coated) and the cable grommet type are made of a very conductive elastomer. This ensures full-area protection against fieldbound interference!

The EMC-DS systems have dual compartments. The front grommet serves as strain relief and sealing via the cable sheath while the back grommet contacts the cable shield over 360°.

### Advantages & benefits: SKL

- Large contact area
- The spring design requires no adjustments and will permanently maintain contact to the cable shield
- Large variety of assembly methods
- Many types with integrated strain relief
- Shock and vibration resistant, maintenance free
- Simple and mostly tool-free assembly
- Designed for high density applications

### Advantages & benefits: EMC-KEL/EMC-KVT

- Split-table cable entry system for cables with connectors
- Very attractive and scratch-resistant surface
- Contacting the cable shield over 360°
- Grommets made entirely from conductive elastomer
- High cable density
- Very good dissipation values
- Very good shielding effect with regard to EMC tightness



EMC-KVT-DS



DIN-rail shape H



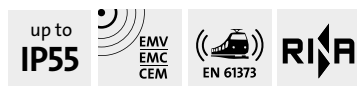
Cross section of the EMC-KEL-DS



EMC-KEL-DS



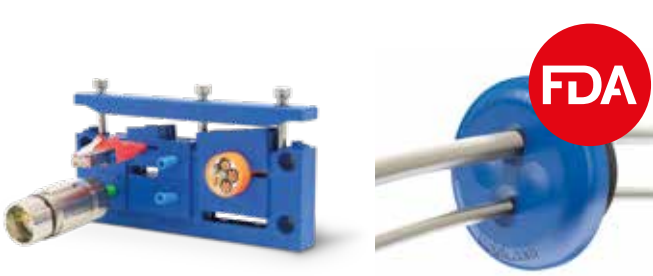
PFSZ-SKL



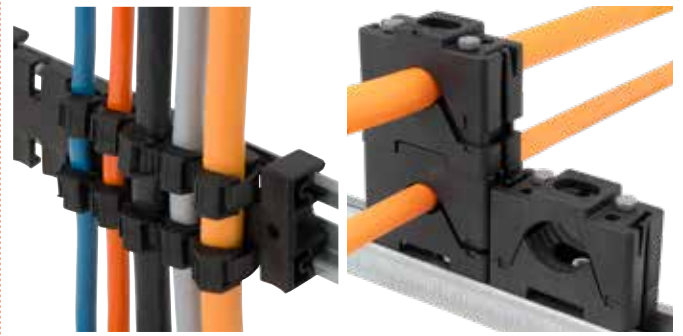
## Cable entry systems

for the food industry

up to  
IP68



## Strain relief & cable management



## CONFiX Cable conduit system

IP54



## Electrical enclosure accessories

up to  
IP66

up to  
UL TYPE  
12



## icotek TOOLS

Punch driver & knockout punches



## Cable entry systems with

IFPS fire penetration

E45  
E130  
EN 45545-3



## Cable entry systems

for the use in cleanrooms

IP68



## ALLIOLIGHT – Lighting systems

for industry and automation

up to  
IP67

